

Interviewing: November 8-10, 2014  
Sample: 1000 Adults nationwide online  
696 registered voters nationwide online



# *The Economist/YouGov* Poll

## Weekly Tracking

For immediate release

**1. Approval of Obama as President – Historical**

Do you approve or disapprove of the way Barack Obama is handling his job as President?

	All Adults						
	Total Approve	Total Disapprove	Strongly Approve	Somewhat Approve	Somewhat Disapprove	Strongly Disapprove	Not Sure
November 8-10, 2014	40%	55%	14%	26%	17%	38%	4%
November 1-3, 2014	38%	58%	16%	22%	22%	36%	4%
October 25-27, 2014	40%	54%	14%	26%	12%	42%	5%
October 18-20, 2014	41%	52%	14%	27%	13%	39%	6%
October 11-13, 2014	40%	57%	13%	27%	17%	40%	3%
October 4-6, 2014	43%	51%	13%	30%	16%	35%	6%
September 27-29, 2014	42%	54%	15%	27%	20%	34%	4%
September 20-22, 2014	43%	53%	14%	29%	15%	38%	4%
September 13-15, 2014	40%	54%	16%	24%	16%	38%	6%
September 6-8, 2014	41%	54%	15%	26%	17%	37%	5%
One Year Ago	40%	53%	14%	26%	13%	40%	6%

	Registered Voters						
	Total Approve	Total Disapprove	Strongly Approve	Somewhat Approve	Somewhat Disapprove	Strongly Disapprove	Not Sure
November 8-10, 2014	40%	58%	16%	24%	15%	43%	2%
November 1-3, 2014	40%	57%	17%	23%	16%	41%	4%
October 25-27, 2014	41%	57%	16%	25%	11%	46%	2%
October 18-20, 2014	41%	57%	17%	24%	12%	45%	2%
October 11-13, 2014	45%	53%	16%	29%	13%	40%	2%
October 4-6, 2014	44%	52%	14%	30%	13%	39%	4%
September 27-29, 2014	43%	55%	17%	26%	16%	39%	2%
September 20-22, 2014	42%	56%	16%	26%	14%	42%	1%
September 13-15, 2014	42%	55%	18%	24%	14%	41%	4%
September 6-8, 2014	40%	58%	16%	24%	17%	41%	2%
One Year Ago	44%	54%	16%	28%	12%	42%	2%

## Obama Approval

"Do you approve or disapprove of the way Barack Obama is handling his job as President?"

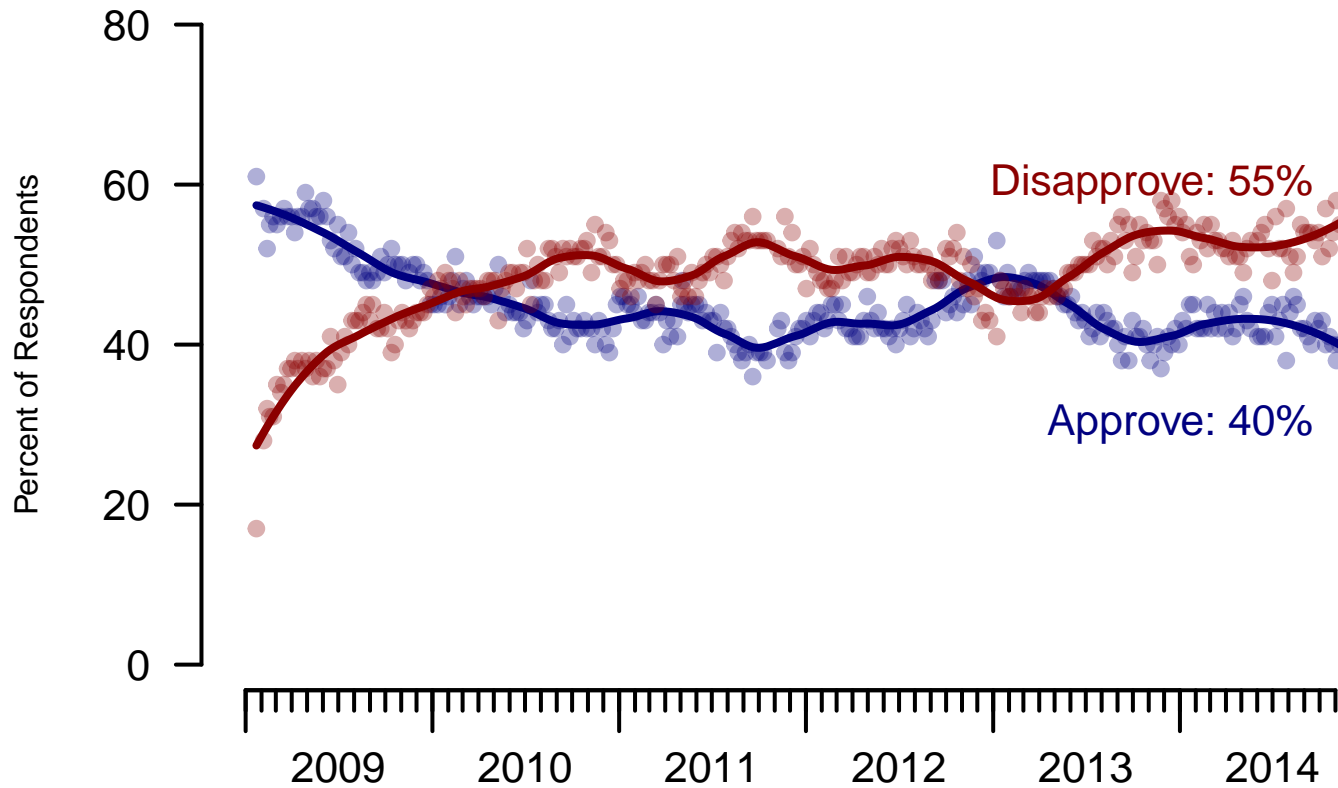


Figure 1: Obama Approval – All Adults

## Obama Approval

"Do you approve or disapprove of the way Barack Obama is handling his job as President?"

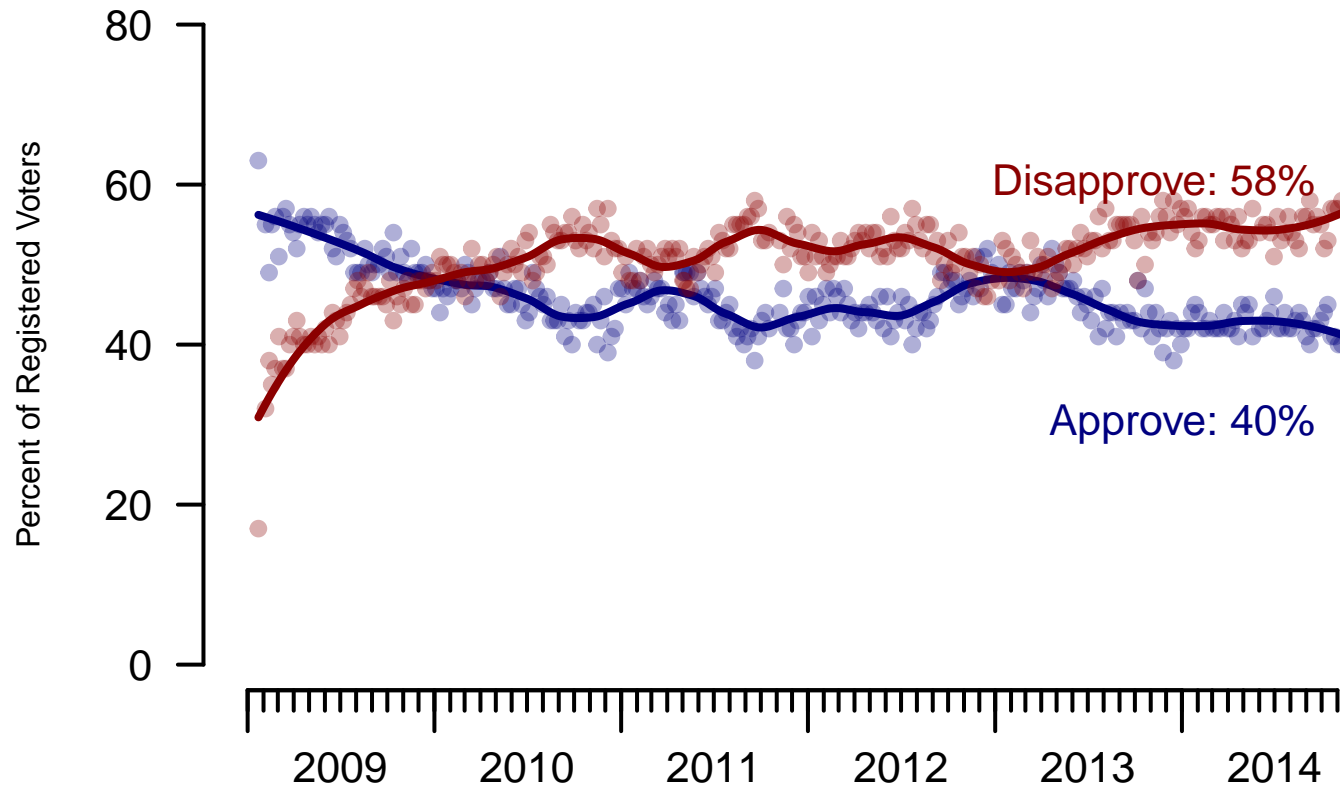


Figure 2: Obama Approval – Registered Voters

**2. Approval of Obama as President – This Week – All Adults**

Do you approve or disapprove of the way Barack Obama is handling his job as President?

	Age					Race				Region			
	Total	18-29	30-44	45-64	65+	White	Black	Hispanic	Other	North-east	Mid-west	South	West
Strongly approve	14%	14%	10%	19%	13%	10%	31%	18%	17%	11%	14%	14%	18%
Somewhat approve	26%	27%	37%	20%	21%	22%	29%	33%	46%	27%	25%	27%	28%
Somewhat disapprove	17%	26%	17%	11%	14%	15%	23%	20%	13%	18%	20%	16%	12%
Strongly disapprove	38%	23%	33%	48%	47%	50%	6%	20%	23%	36%	40%	38%	39%
Not sure	4%	11%	3%	1%	4%	2%	12%	8%	1%	8%	2%	5%	3%
Totals (Unweighted N)	100% (1,000)	100% (137)	100% (279)	100% (438)	100% (146)	100% (683)	100% (133)	100% (114)	100% (70)	100% (184)	100% (238)	100% (380)	100% (198)

	Party ID			Ideology			Gender		Family Income			
	Total	Dem	Ind	Rep	Lib	Mod	Con	Male	Female	Under 40	40-100	100+
Strongly approve	14%	33%	6%	3%	30%	15%	5%	14%	15%	18%	11%	14%
Somewhat approve	26%	45%	25%	4%	42%	34%	10%	26%	27%	24%	30%	19%
Somewhat disapprove	17%	11%	21%	17%	12%	21%	16%	17%	16%	20%	17%	13%
Strongly disapprove	38%	7%	45%	74%	10%	25%	68%	40%	36%	32%	41%	50%
Not sure	4%	3%	3%	1%	6%	5%	0%	2%	6%	5%	1%	4%
Totals (Unweighted N)	100% (1,000)	100% (360)	100% (275)	100% (275)	100% (246)	100% (346)	100% (333)	100% (490)	100% (510)	100% (375)	100% (348)	100% (122)

**3. Approval of U.S. Congress – Historical**

Overall, do you approve or disapprove of the way that the United States Congress is handling its job?

	All Adults							
	Total Approve	Total Disapprove	Strongly Approve	Somewhat Approve	Neutral	Somewhat Disapprove	Strongly Disapprove	Not Sure
November 8-10, 2014	9%	63%	2%	7%	18%	25%	38%	10%
November 1-3, 2014	8%	65%	1%	7%	21%	24%	41%	6%
October 25-27, 2014	9%	65%	1%	8%	16%	24%	41%	10%
October 18-20, 2014	12%	62%	2%	10%	19%	23%	39%	8%
October 11-13, 2014	10%	69%	2%	8%	13%	28%	41%	8%
October 4-6, 2014	8%	66%	2%	6%	18%	25%	41%	9%
September 27-29, 2014	9%	67%	2%	7%	15%	26%	41%	10%
September 20-22, 2014	9%	67%	1%	8%	15%	27%	40%	10%
September 13-15, 2014	11%	60%	3%	8%	19%	21%	39%	10%
September 6-8, 2014	9%	66%	3%	6%	16%	22%	44%	9%
One Year Ago	7%	67%	2%	5%	18%	18%	49%	8%

	Registered Voters							
	Total Approve	Total Disapprove	Strongly Approve	Somewhat Approve	Neutral	Somewhat Disapprove	Strongly Disapprove	Not Sure
November 8-10, 2014	7%	69%	1%	6%	16%	27%	42%	7%
November 1-3, 2014	8%	68%	1%	7%	20%	24%	44%	5%
October 25-27, 2014	8%	72%	1%	7%	14%	26%	46%	4%
October 18-20, 2014	12%	66%	2%	10%	19%	23%	43%	4%
October 11-13, 2014	11%	72%	3%	8%	13%	28%	44%	4%
October 4-6, 2014	8%	69%	1%	7%	17%	24%	45%	5%
September 27-29, 2014	10%	69%	3%	7%	13%	25%	44%	7%
September 20-22, 2014	9%	74%	1%	8%	13%	24%	50%	4%
September 13-15, 2014	10%	67%	2%	8%	18%	22%	45%	5%
September 6-8, 2014	9%	71%	2%	7%	13%	23%	48%	8%
One Year Ago	7%	77%	2%	5%	13%	22%	55%	3%

### Congress Approval

"Do you approve of the way the  
U.S. Congress is handling its job?"

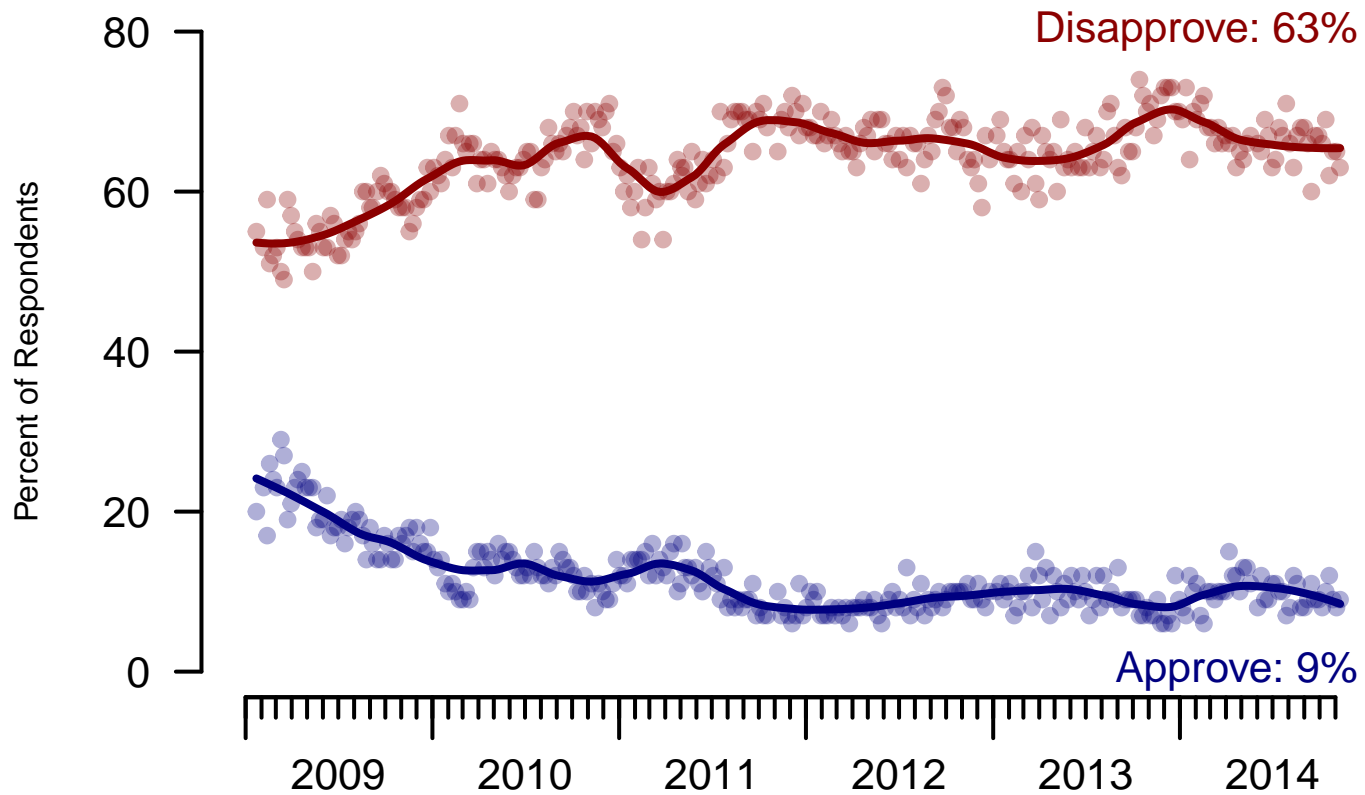


Figure 3: Congress Approval – All Adults

## Congress Approval

"Do you approve of the way the  
U.S. Congress is handling its job?"

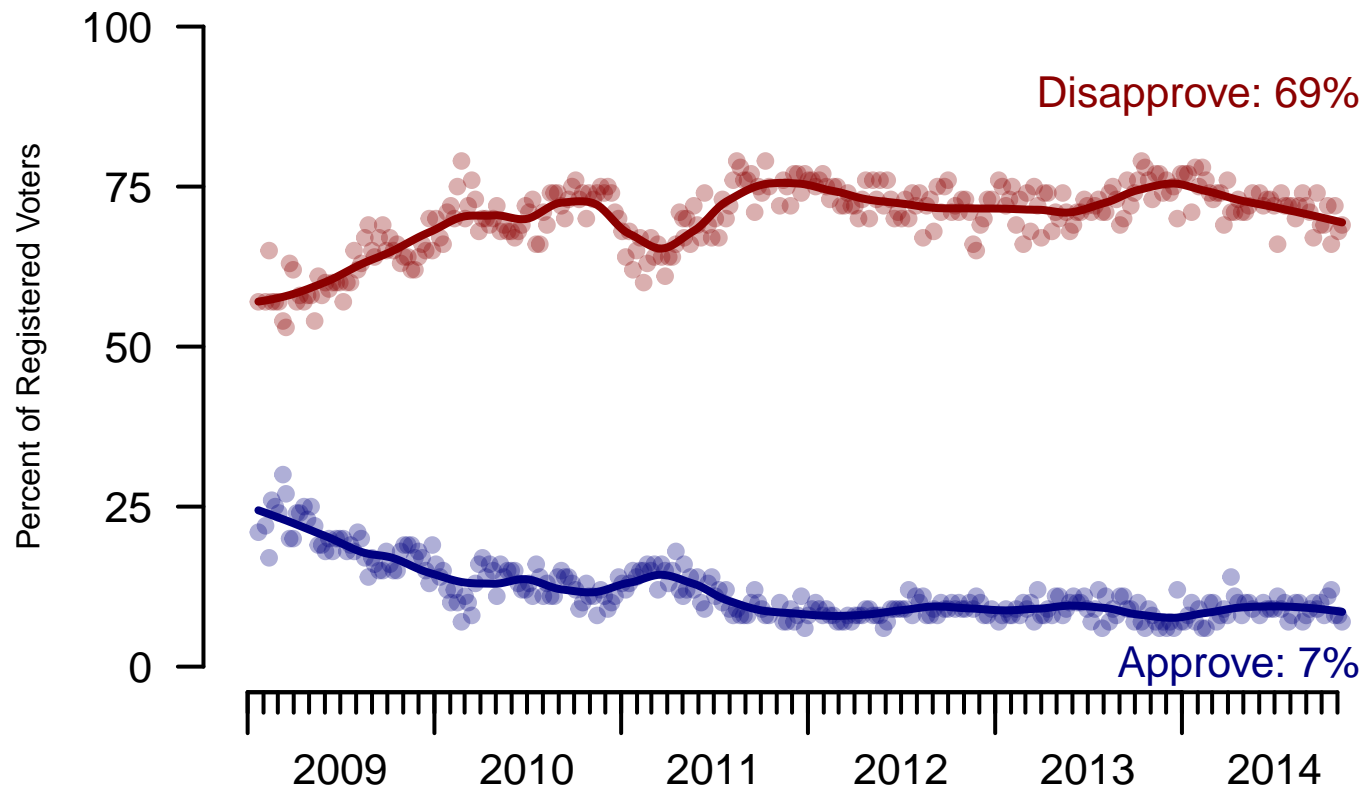


Figure 4: Congress Approval – Registered Voters



**4. Approval of U.S. Congress – This Week – All Adults**

Overall, do you approve or disapprove of the way that the United States Congress is handling its job?

	Age					Race				Region			
	Total	18-29	30-44	45-64	65+	White	Black	Hispanic	Other	North-east	Mid-west	South	West
Strongly approve	2%	3%	3%	0%	1%	2%	0%	3%	–	–	0%	4%	1%
Somewhat approve	7%	11%	6%	7%	4%	6%	12%	8%	12%	3%	6%	9%	9%
Neither approve nor disapprove	18%	15%	26%	16%	11%	12%	25%	29%	29%	25%	16%	17%	13%
Somewhat disapprove	25%	27%	21%	27%	27%	31%	14%	13%	18%	27%	32%	22%	23%
Strongly disapprove	38%	29%	32%	44%	51%	41%	34%	36%	30%	32%	37%	39%	45%
Not sure	10%	14%	13%	5%	6%	8%	15%	11%	11%	12%	9%	9%	10%
Totals (Unweighted N)	100% (996)	100% (137)	100% (277)	100% (437)	100% (145)	100% (680)	100% (133)	100% (113)	100% (70)	100% (182)	100% (238)	100% (378)	100% (198)

	Party ID			Ideology			Gender		Family Income			
	Total	Dem	Ind	Rep	Lib	Mod	Con	Male	Female	Under 40	40-100	100+
Strongly approve	2%	2%	1%	3%	2%	0%	2%	2%	1%	3%	1%	–
Somewhat approve	7%	6%	5%	10%	7%	8%	7%	10%	4%	6%	9%	6%
Neither approve nor disapprove	18%	20%	12%	17%	17%	17%	19%	13%	22%	21%	15%	15%
Somewhat disapprove	25%	21%	23%	35%	20%	27%	28%	23%	27%	28%	23%	28%
Strongly disapprove	38%	41%	50%	31%	48%	35%	37%	45%	32%	33%	44%	47%
Not sure	10%	11%	8%	3%	7%	12%	7%	6%	13%	9%	8%	4%
Totals (Unweighted N)	100% (996)	100% (357)	100% (274)	100% (275)	100% (243)	100% (345)	100% (333)	100% (489)	100% (507)	100% (375)	100% (346)	100% (122)

**5. Direction of country – Historical**

Would you say things in this country today are...

	All Adults		
	Right Direction	Wrong Track	Not Sure
November 8-10, 2014	23%	61%	16%
November 1-3, 2014	28%	59%	13%
October 25-27, 2014	29%	60%	11%
October 18-20, 2014	25%	60%	15%
October 11-13, 2014	26%	65%	9%
October 4-6, 2014	26%	58%	16%
September 27-29, 2014	26%	57%	17%
September 20-22, 2014	28%	60%	12%
September 13-15, 2014	26%	63%	11%
September 6-8, 2014	23%	60%	17%
One Year Ago	24%	62%	15%

	Registered Voters		
	Right Direction	Wrong Track	Not Sure
November 8-10, 2014	24%	62%	13%
November 1-3, 2014	28%	59%	12%
October 25-27, 2014	30%	62%	8%
October 18-20, 2014	28%	62%	9%
October 11-13, 2014	30%	61%	9%
October 4-6, 2014	27%	60%	13%
September 27-29, 2014	27%	58%	15%
September 20-22, 2014	30%	62%	7%
September 13-15, 2014	28%	60%	11%
September 6-8, 2014	24%	62%	14%
One Year Ago	25%	65%	10%

## Direction of Country

"Would you say things in this country today are generally headed in the right direction or off on the wrong track?"

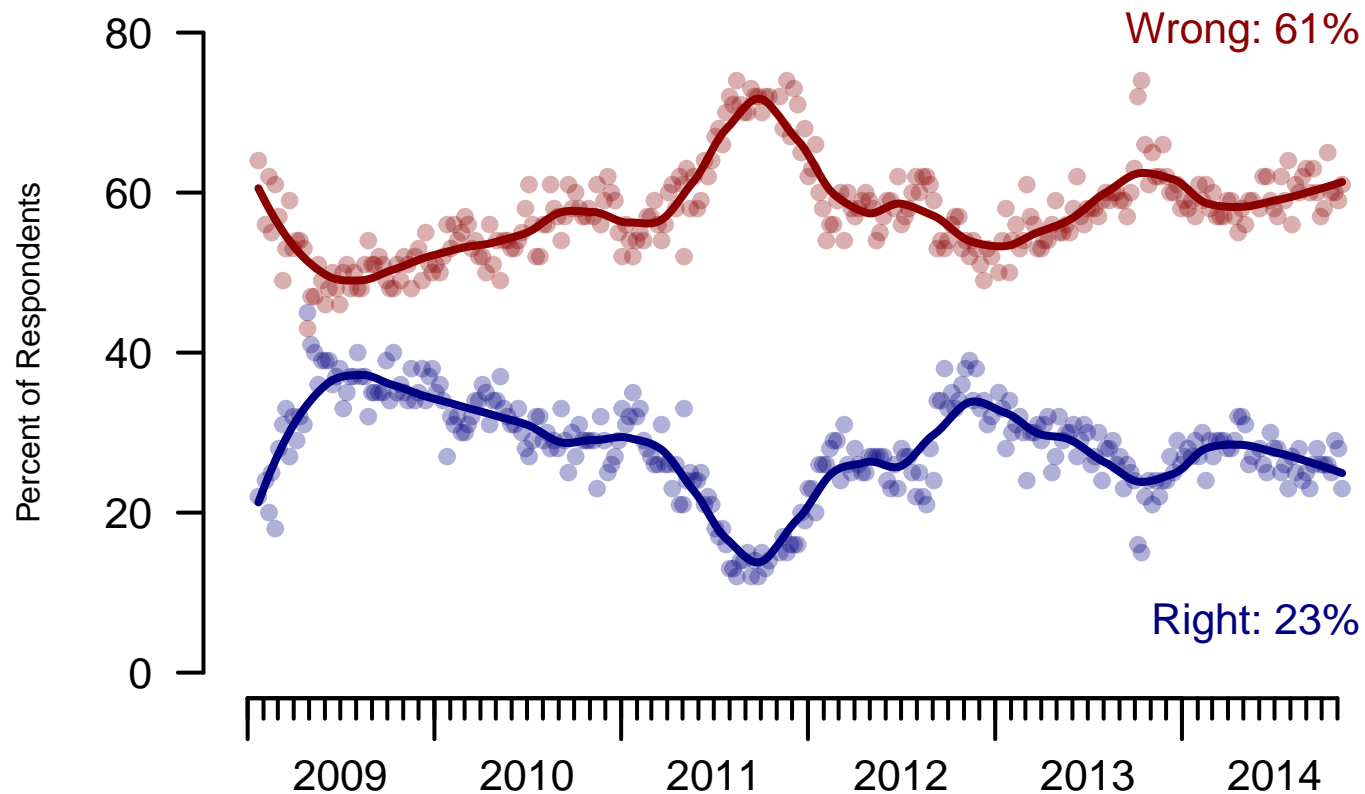


Figure 5: Direction of Country – All Adults

## Direction of Country

"Would you say things in this country today are generally headed in the right direction or off on the wrong track?"

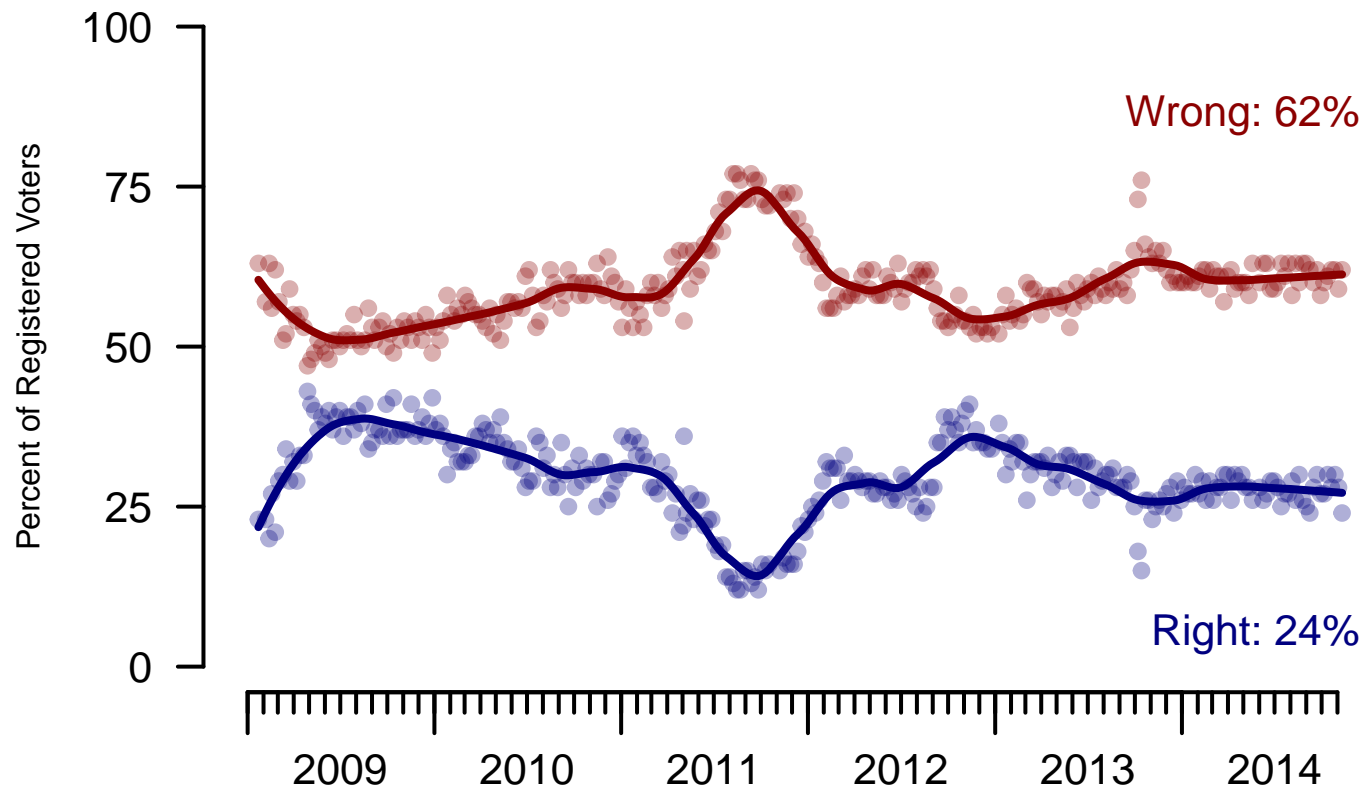


Figure 6: Direction of Country – Registered Voters

**6. Direction of Country – This Week – All Adults**

Would you say things in this country today are...

	Total	Age				Race				Region			
		18-29	30-44	45-64	65+	White	Black	Hispanic	Other	North-east	Mid-west	South	West
Generally headed in the right direction	23%	23%	18%	24%	27%	18%	35%	23%	36%	25%	19%	23%	26%
Off on the wrong track	61%	52%	66%	65%	59%	69%	44%	51%	44%	60%	65%	60%	59%
Not sure	16%	25%	16%	11%	14%	13%	21%	26%	20%	15%	16%	18%	15%
Totals (Unweighted N)	100% (1,000)	100% (137)	100% (279)	100% (438)	100% (146)	100% (683)	100% (133)	100% (114)	100% (70)	100% (184)	100% (238)	100% (380)	100% (198)

	Total	Party ID			Ideology			Gender		Family Income		
		Dem	Ind	Rep	Lib	Mod	Con	Male	Female	Under 40	40-100	100+
Generally headed in the right direction	23%	40%	15%	13%	40%	26%	10%	26%	20%	21%	26%	25%
Off on the wrong track	61%	39%	73%	79%	44%	54%	78%	65%	57%	62%	62%	65%
Not sure	16%	21%	12%	8%	16%	20%	12%	10%	22%	17%	12%	11%
Totals (Unweighted N)	100% (1,000)	100% (360)	100% (275)	100% (275)	100% (246)	100% (346)	100% (333)	100% (490)	100% (510)	100% (375)	100% (348)	100% (122)

**The Economist/YouGov Poll**  
November 8-10, 2014



<b>Sponsorship</b>	<i>The Economist</i>
<b>Fieldwork</b>	YouGov
<b>Interviewing Dates</b>	November 8-10, 2014
<b>Target population</b>	U.S. citizens, aged 18 and over.
<b>Sampling method</b>	Respondents were selected from YouGov's opt-in Internet panel using sample matching. A random sample (stratified by age, gender, race, education, and region) was selected from the 2010 American Community Study. Voter registration was imputed from the November 2010 Current Population Survey Registration and Voting Supplement. Religion, political interest, minor party identification, and non-placement on an ideology scale, were imputed from the 2008 Pew Religion in American Life Survey.
<b>Weighting</b>	The sample was weighted using propensity scores based on age, gender, race, education, news interest, voter registration, and non-placement on an ideology scale. The weights range from 0.08 to 5.14, with a mean of one and a standard deviation of 1.
<b>Number of respondents</b>	1,000
<b>Margin of error</b>	± 4.5% (adjusted for weighting)
<b>Margin of error (Registered Voters)</b>	± 4.8% (adjusted for weighting)
<b>Survey mode</b>	Web-based interviews
<b>Full results</b>	Available online at <a href="http://today.yougov.com/news/categories/economist/">http://today.yougov.com/news/categories/economist/</a> .