

Interviewing: June 27-29, 2015
Sample: 1000 Adults nationwide online
690 registered voters nationwide online



The Economist/YouGov Poll

Weekly Tracking

For immediate release

1. Approval of Obama as President – Historical

Do you approve or disapprove of the way Barack Obama is handling his job as President?

	All Adults						
	Total Approve	Total Disapprove	Strongly Approve	Somewhat Approve	Somewhat Disapprove	Strongly Disapprove	Not Sure
June 27-29, 2015	48%	49%	19%	29%	11%	38%	3%
June 20-22, 2015	47%	52%	16%	31%	15%	37%	2%
June 13-15, 2015	46%	52%	19%	27%	15%	37%	2%
June 6-8, 2015	43%	54%	16%	27%	18%	36%	3%
May 30-June 1, 2015	47%	50%	19%	28%	14%	36%	3%
May 23-25, 2015	45%	53%	17%	28%	16%	37%	2%
May 16-18, 2015	44%	53%	19%	25%	17%	36%	3%
May 9-11, 2015	47%	51%	19%	28%	14%	37%	3%
May 2-4, 2015	46%	51%	18%	28%	17%	34%	4%
April 25-27, 2015	47%	48%	20%	27%	13%	35%	4%
One Year Ago	45%	48%	16%	29%	13%	35%	7%

	Registered Voters						
	Total Approve	Total Disapprove	Strongly Approve	Somewhat Approve	Somewhat Disapprove	Strongly Disapprove	Not Sure
June 27-29, 2015	45%	53%	20%	25%	10%	43%	2%
June 20-22, 2015	44%	55%	17%	27%	13%	42%	1%
June 13-15, 2015	42%	56%	16%	26%	13%	43%	2%
June 6-8, 2015	42%	55%	18%	24%	15%	40%	2%
May 30-June 1, 2015	46%	53%	18%	28%	13%	40%	1%
May 23-25, 2015	46%	53%	18%	28%	14%	39%	1%
May 16-18, 2015	45%	53%	19%	26%	12%	41%	2%
May 9-11, 2015	47%	52%	21%	26%	13%	39%	1%
May 2-4, 2015	45%	53%	19%	26%	15%	38%	2%
April 25-27, 2015	49%	49%	22%	27%	12%	37%	2%
One Year Ago	46%	51%	17%	29%	12%	39%	4%

Obama Approval

"Do you approve or disapprove of the way Barack Obama is handling his job as President?"

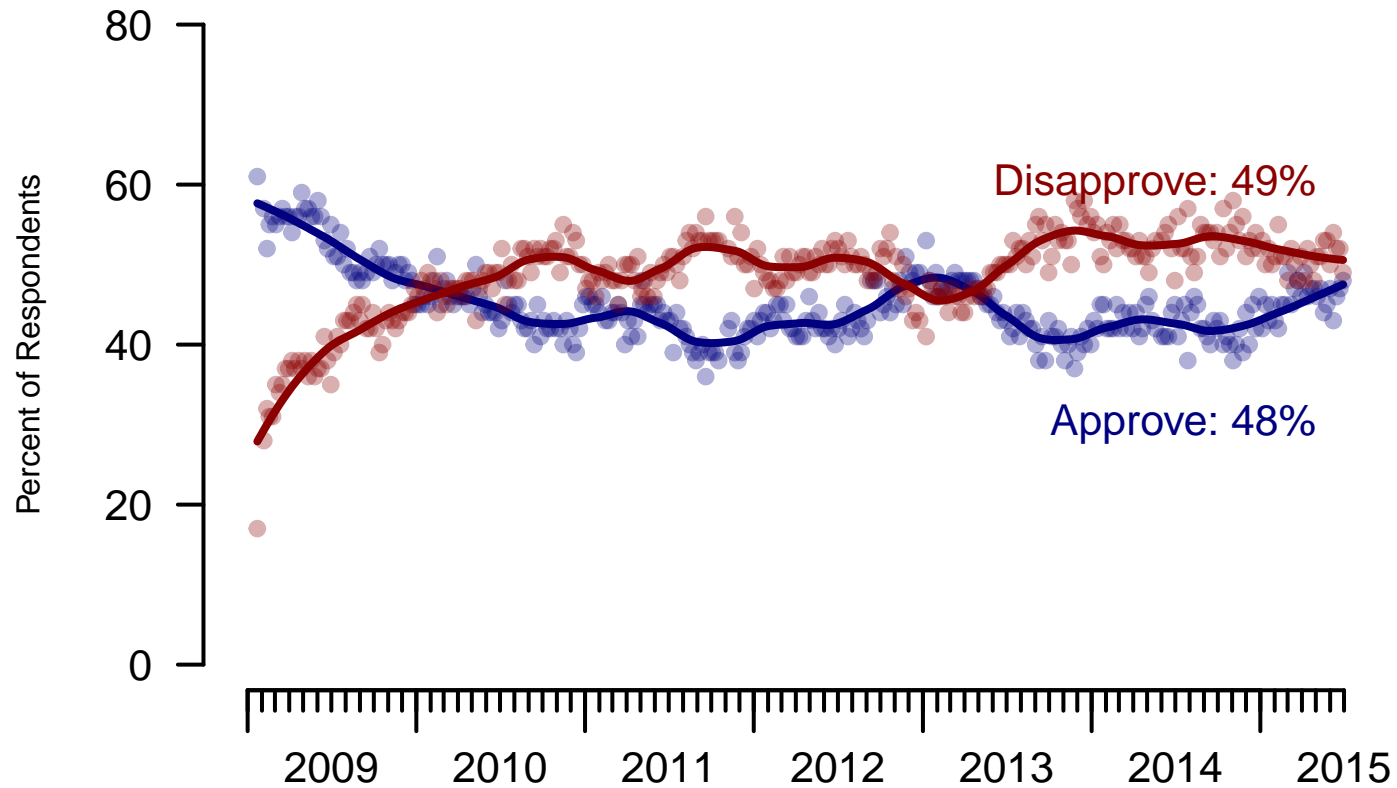


Figure 1: Obama Approval – All Adults

Obama Approval

"Do you approve or disapprove of the way Barack Obama is handling his job as President?"

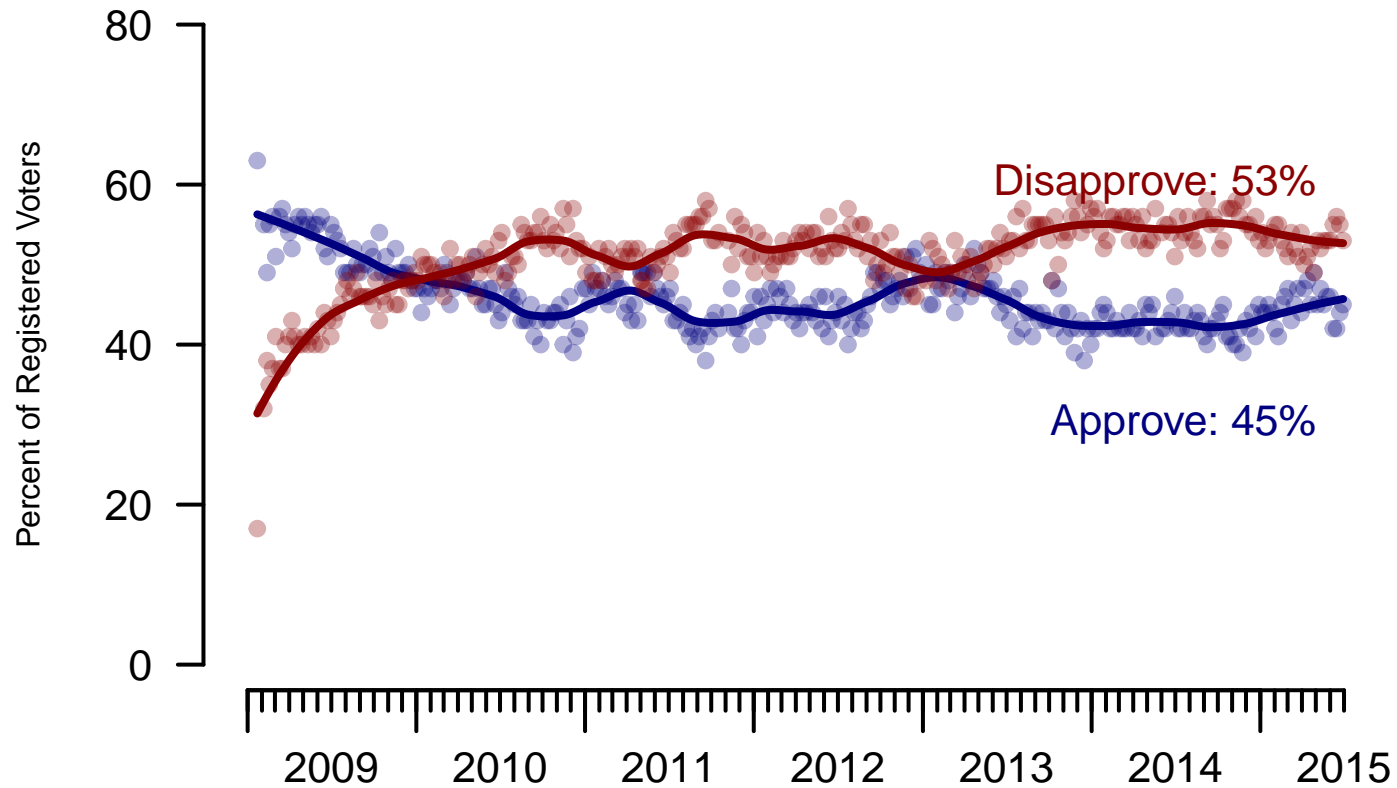


Figure 2: Obama Approval – Registered Voters

2. Approval of Obama as President – This Week – All Adults

Do you approve or disapprove of the way Barack Obama is handling his job as President?

	Age					Race				Region			
	Total	18-29	30-44	45-64	65+	White	Black	Hispanic	Other	North-east	Mid-west	South	West
Strongly approve	19%	20%	16%	23%	14%	14%	40%	28%	10%	15%	17%	20%	24%
Somewhat approve	29%	42%	36%	20%	16%	25%	36%	34%	51%	37%	28%	28%	26%
Somewhat disapprove	11%	11%	15%	11%	4%	10%	12%	14%	9%	16%	10%	11%	8%
Strongly disapprove	38%	22%	30%	44%	65%	48%	8%	21%	30%	26%	44%	40%	39%
Not sure	3%	5%	2%	3%	1%	3%	4%	4%	1%	7%	1%	2%	4%
Totals (Unweighted N)	100% (1,000)	100% (198)	100% (278)	100% (394)	100% (130)	100% (692)	100% (141)	100% (109)	100% (58)	100% (189)	100% (225)	100% (369)	100% (217)

	Party ID			Ideology			Gender		Family Income			
	Total	Dem	Ind	Rep	Lib	Mod	Con	Male	Female	Under 40	40-100	100+
Strongly approve	19%	43%	10%	3%	40%	17%	8%	17%	22%	21%	19%	17%
Somewhat approve	29%	42%	34%	8%	45%	37%	11%	30%	28%	26%	30%	35%
Somewhat disapprove	11%	5%	16%	12%	8%	14%	10%	10%	12%	10%	10%	16%
Strongly disapprove	38%	8%	38%	74%	4%	27%	70%	40%	36%	38%	40%	31%
Not sure	3%	3%	3%	3%	2%	4%	2%	3%	3%	5%	1%	0%
Totals (Unweighted N)	100% (1,000)	100% (400)	100% (270)	100% (272)	100% (295)	100% (370)	100% (309)	100% (454)	100% (546)	100% (406)	100% (349)	100% (126)

3. Approval of U.S. Congress – Historical

Overall, do you approve or disapprove of the way that the United States Congress is handling its job?

	All Adults							
	Total Approve	Total Disapprove	Strongly Approve	Somewhat Approve	Neutral	Somewhat Disapprove	Strongly Disapprove	Not Sure
June 27-29, 2015	13%	58%	2%	11%	20%	25%	33%	9%
June 20-22, 2015	14%	61%	3%	11%	20%	27%	34%	6%
June 13-15, 2015	15%	57%	3%	12%	20%	23%	34%	8%
June 6-8, 2015	13%	61%	3%	10%	19%	26%	35%	7%
May 30-June 1, 2015	13%	59%	3%	10%	20%	24%	35%	8%
May 23-25, 2015	12%	63%	2%	10%	19%	27%	36%	6%
May 16-18, 2015	14%	60%	4%	10%	21%	25%	35%	7%
May 9-11, 2015	13%	60%	2%	11%	19%	27%	33%	8%
May 2-4, 2015	11%	64%	0%	11%	17%	24%	40%	8%
April 25-27, 2015	15%	55%	3%	12%	23%	24%	31%	7%
One Year Ago	11%	63%	3%	8%	18%	19%	44%	8%

	Registered Voters							
	Total Approve	Total Disapprove	Strongly Approve	Somewhat Approve	Neutral	Somewhat Disapprove	Strongly Disapprove	Not Sure
June 27-29, 2015	14%	61%	2%	12%	18%	26%	35%	6%
June 20-22, 2015	14%	65%	2%	12%	17%	27%	38%	5%
June 13-15, 2015	14%	59%	1%	13%	21%	23%	36%	5%
June 6-8, 2015	12%	65%	2%	10%	17%	28%	37%	6%
May 30-June 1, 2015	13%	64%	2%	11%	17%	24%	40%	5%
May 23-25, 2015	12%	64%	2%	10%	18%	25%	39%	5%
May 16-18, 2015	14%	63%	4%	10%	17%	25%	38%	6%
May 9-11, 2015	16%	62%	3%	13%	17%	27%	35%	5%
May 2-4, 2015	12%	68%	1%	11%	15%	26%	42%	6%
April 25-27, 2015	16%	61%	3%	13%	19%	26%	35%	5%
One Year Ago	9%	72%	2%	7%	13%	22%	50%	6%

Congress Approval

"Do you approve of the way the U.S. Congress is handling its job?"

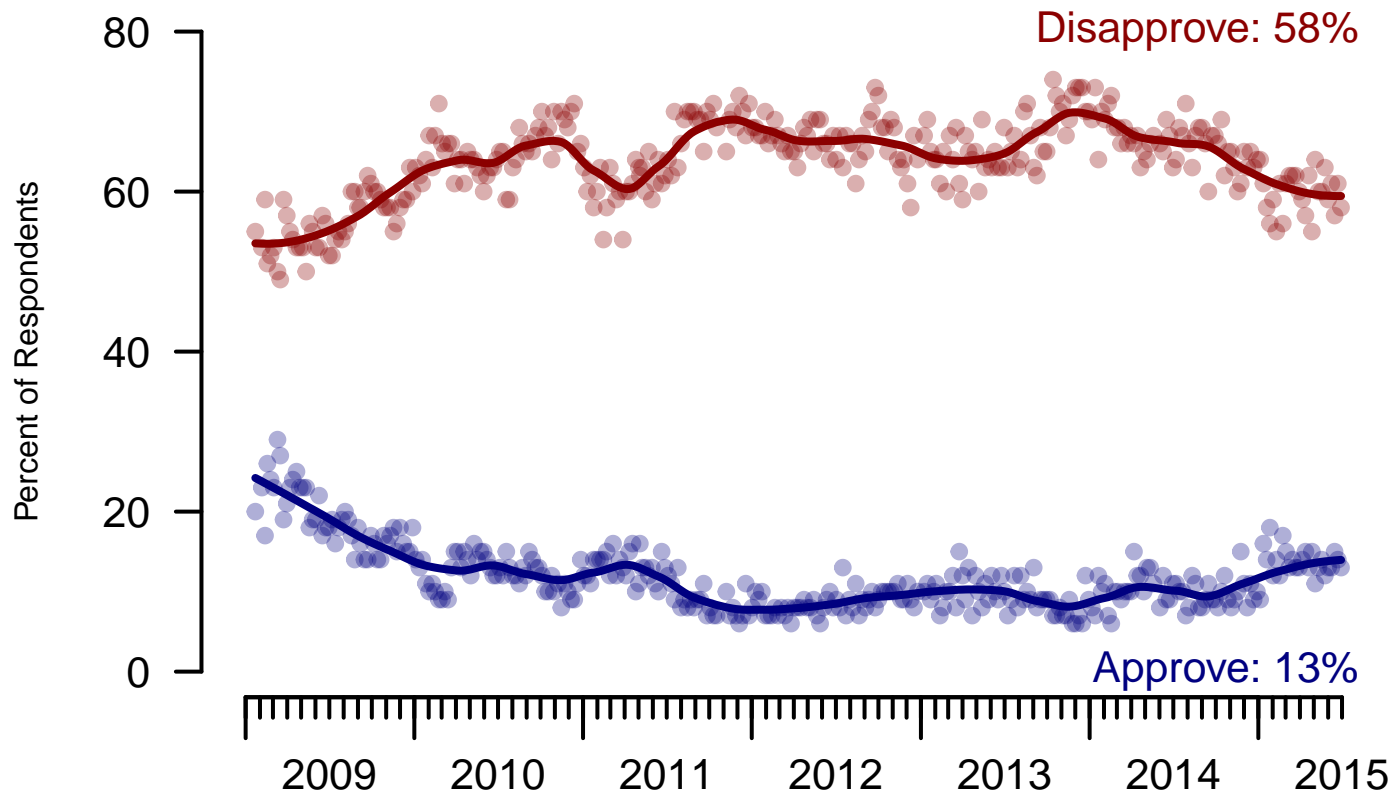


Figure 3: Congress Approval – All Adults

Congress Approval

"Do you approve of the way the
U.S. Congress is handling its job?"

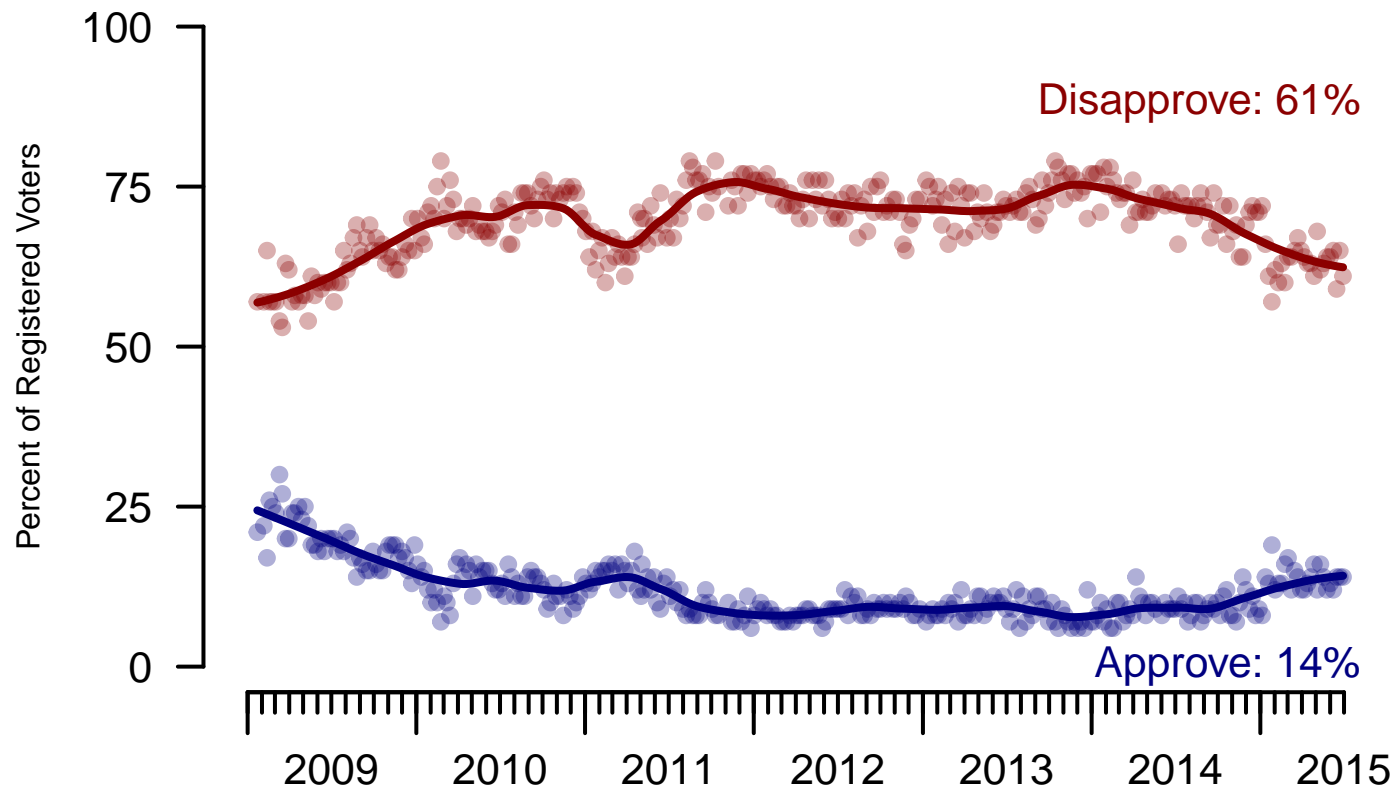


Figure 4: Congress Approval – Registered Voters

4. Approval of U.S. Congress – This Week – All Adults

Overall, do you approve or disapprove of the way that the United States Congress is handling its job?

	Age					Race				Region			
	Total	18-29	30-44	45-64	65+	White	Black	Hispanic	Other	North-east	Mid-west	South	West
Strongly approve	2%	2%	2%	3%	1%	1%	3%	7%	2%	1%	2%	1%	5%
Somewhat approve	11%	15%	11%	9%	12%	10%	10%	25%	11%	8%	12%	14%	10%
Neither approve nor disapprove	20%	19%	24%	19%	13%	17%	29%	17%	31%	26%	18%	19%	18%
Somewhat disapprove	25%	23%	22%	25%	31%	27%	18%	19%	27%	22%	28%	24%	24%
Strongly disapprove	33%	25%	33%	34%	41%	36%	27%	21%	23%	30%	33%	33%	33%
Not sure	9%	15%	9%	9%	2%	8%	14%	11%	5%	14%	7%	8%	10%
Totals (Unweighted N)	100% (986)	100% (195)	100% (271)	100% (391)	100% (129)	100% (685)	100% (138)	100% (105)	100% (58)	100% (186)	100% (222)	100% (363)	100% (215)

	Party ID			Ideology			Gender		Family Income			
	Total	Dem	Ind	Rep	Lib	Mod	Con	Male	Female	Under 40	40-100	100+
Strongly approve	2%	4%	1%	1%	3%	4%	1%	1%	3%	4%	1%	2%
Somewhat approve	11%	12%	7%	17%	11%	7%	17%	12%	11%	12%	9%	19%
Neither approve nor disapprove	20%	20%	17%	21%	14%	23%	21%	20%	19%	15%	23%	26%
Somewhat disapprove	25%	18%	25%	31%	22%	19%	32%	24%	25%	24%	28%	19%
Strongly disapprove	33%	34%	41%	24%	45%	35%	23%	35%	30%	34%	34%	32%
Not sure	9%	13%	10%	4%	6%	13%	6%	8%	11%	12%	5%	2%
Totals (Unweighted N)	100% (986)	100% (394)	100% (266)	100% (270)	100% (289)	100% (365)	100% (307)	100% (450)	100% (536)	100% (397)	100% (345)	100% (126)

5. Direction of country – Historical

Would you say things in this country today are...

	All Adults		
	Right Direction	Wrong Track	Not Sure
June 27-29, 2015	32%	60%	8%
June 20-22, 2015	25%	64%	11%
June 13-15, 2015	26%	62%	13%
June 6-8, 2015	29%	60%	11%
May 30-June 1, 2015	27%	59%	14%
May 23-25, 2015	28%	59%	13%
May 16-18, 2015	27%	62%	11%
May 9-11, 2015	29%	59%	12%
May 2-4, 2015	27%	60%	13%
April 25-27, 2015	28%	57%	14%
One Year Ago	28%	58%	13%

	Registered Voters		
	Right Direction	Wrong Track	Not Sure
June 27-29, 2015	32%	61%	7%
June 20-22, 2015	25%	64%	11%
June 13-15, 2015	27%	65%	9%
June 6-8, 2015	29%	59%	11%
May 30-June 1, 2015	29%	61%	10%
May 23-25, 2015	29%	60%	12%
May 16-18, 2015	28%	63%	9%
May 9-11, 2015	30%	58%	12%
May 2-4, 2015	26%	63%	11%
April 25-27, 2015	28%	60%	13%
One Year Ago	29%	59%	12%

Direction of Country

"Would you say things in this country today are generally headed in the right direction or off on the wrong track?"

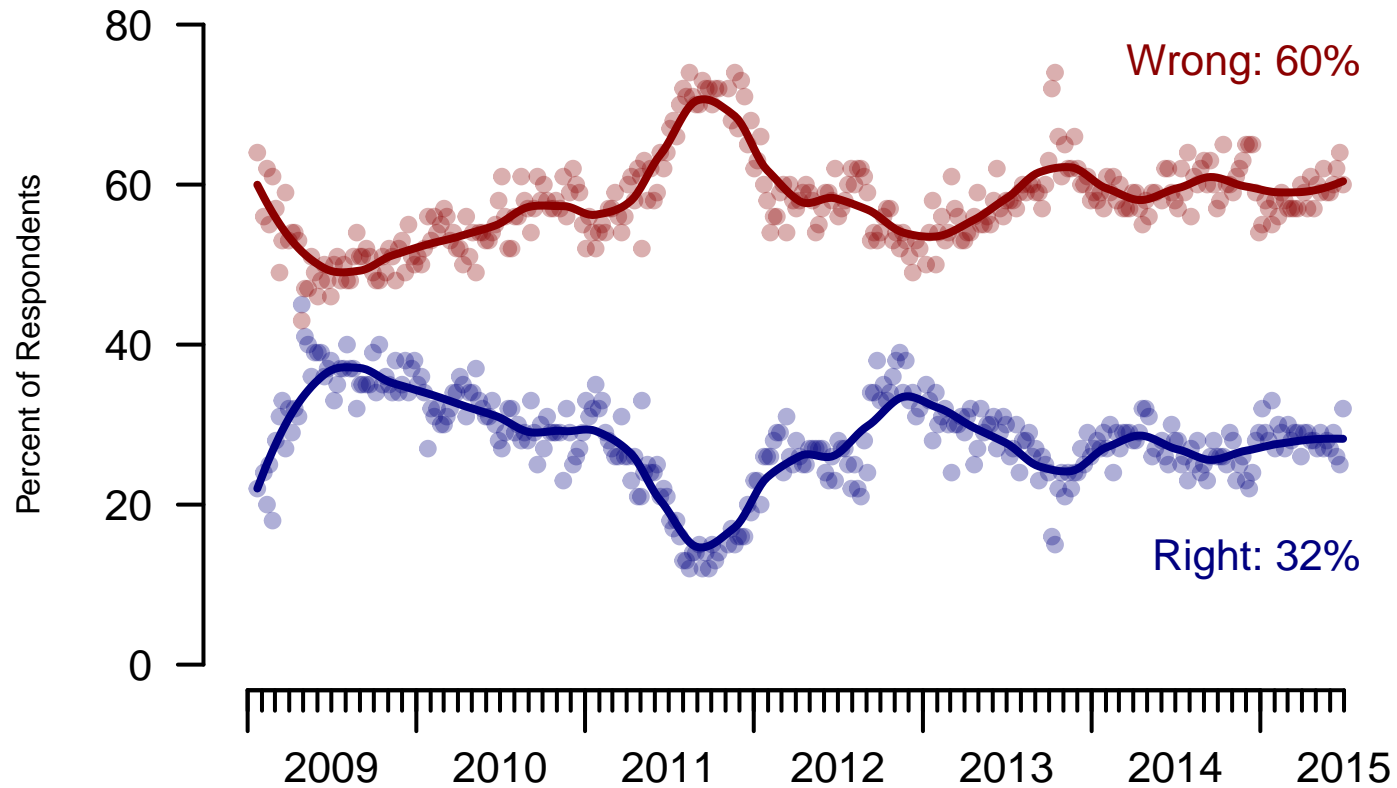


Figure 5: Direction of Country – All Adults

Direction of Country

"Would you say things in this country today are generally headed in the right direction or off on the wrong track?"

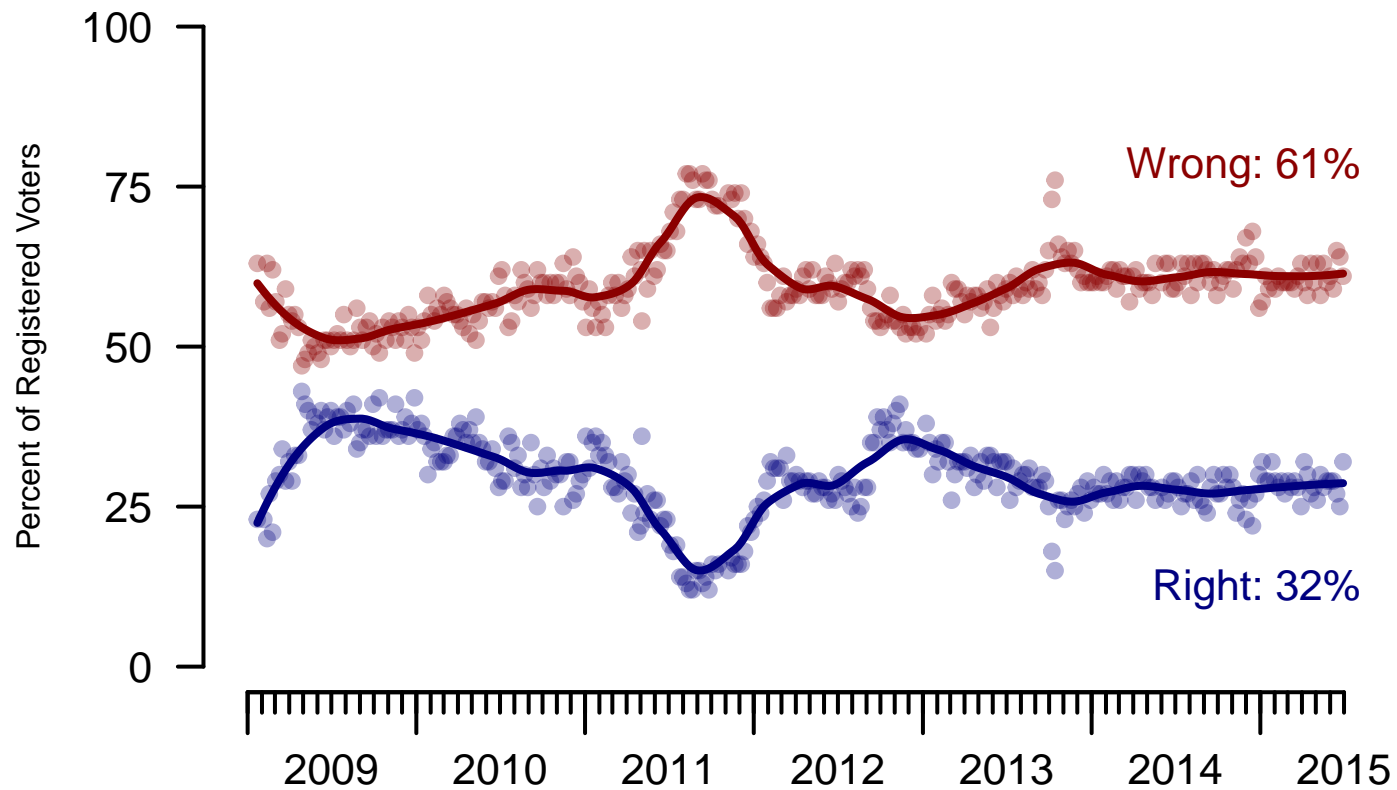


Figure 6: Direction of Country – Registered Voters

6. Direction of Country – This Week – All Adults

Would you say things in this country today are...

	Total	Age				Race				Region			
		18-29	30-44	45-64	65+	White	Black	Hispanic	Other	North-east	Mid-west	South	West
Generally headed in the right direction	32%	41%	37%	26%	22%	27%	44%	40%	43%	35%	31%	28%	37%
Off on the wrong track	60%	49%	59%	62%	76%	66%	46%	50%	52%	54%	62%	66%	55%
Not sure	8%	10%	4%	12%	2%	7%	10%	10%	5%	11%	7%	7%	8%
Totals (Unweighted N)	100% (1,000)	100% (198)	100% (278)	100% (394)	100% (130)	100% (692)	100% (141)	100% (109)	100% (58)	100% (189)	100% (225)	100% (369)	100% (217)

	Total	Party ID			Ideology			Gender		Family Income		
		Dem	Ind	Rep	Lib	Mod	Con	Male	Female	Under 40	40-100	100+
Generally headed in the right direction	32%	57%	29%	8%	61%	31%	15%	29%	35%	33%	31%	40%
Off on the wrong track	60%	35%	62%	87%	32%	57%	82%	64%	56%	59%	64%	54%
Not sure	8%	8%	9%	5%	8%	12%	4%	7%	8%	8%	5%	6%
Totals (Unweighted N)	100% (1,000)	100% (400)	100% (270)	100% (272)	100% (295)	100% (370)	100% (309)	100% (454)	100% (546)	100% (406)	100% (349)	100% (126)

Sponsorship	<i>The Economist</i>
Fieldwork	YouGov
Interviewing Dates	June 27-29, 2015
Target population	U.S. citizens, aged 18 and over.
Sampling method	Respondents were selected from YouGov's opt-in Internet panel using sample matching. A random sample (stratified by age, gender, race, education, and region) was selected from the 2010 American Community Study. Voter registration was imputed from the November 2010 Current Population Survey Registration and Voting Supplement. Religion, political interest, minor party identification, and non-placement on an ideology scale, were imputed from the 2008 Pew Religion in American Life Survey.
Weighting	The sample was weighted using propensity scores based on age, gender, race, education, news interest, voter registration, and non-placement on an ideology scale. The weights range from 0.17 to 4.07, with a mean of one and a standard deviation of 0.8.
Number of respondents	1,000
Margin of error	± 4% (adjusted for weighting)
Margin of error (Registered Voters)	± 4.4% (adjusted for weighting)
Survey mode	Web-based interviews
Full results	Available online at http://today.yougov.com/news/categories/economist/ .