

Interviewing: November 12 - 14, 2017
Sample: 1500 Adults nationwide online
1074 registered voters nationwide online



The Economist/YouGov Poll

Weekly Tracking

For immediate release

1. Presidential Job Approval – Historical

Do you approve or disapprove of the way [President's name] is handling his job as President?

	All Adults						
	Total Approve	Total Disapprove	Strongly Approve	Somewhat Approve	Somewhat Disapprove	Strongly Disapprove	Not Sure
November 10-14, 2017	34%	55%	17%	17%	12%	43%	11%
November 3-7, 2017	37%	54%	18%	19%	11%	43%	9%
October 27-31, 2017	40%	52%	22%	18%	11%	41%	8%
October 21-23, 2017	37%	53%	19%	18%	11%	42%	9%
October 14-16, 2017	37%	52%	20%	17%	10%	42%	10%
October 7-9, 2017	36%	52%	19%	17%	10%	42%	12%
September 30-October 2, 2017	39%	54%	20%	19%	12%	42%	8%
September 23-25, 2017	37%	53%	19%	18%	12%	41%	10%
September 16-18, 2017	39%	49%	19%	20%	13%	36%	12%
September 9-11, 2017	39%	52%	21%	18%	13%	39%	8%
One Year Ago	51%	41%	29%	22%	13%	28%	8%

	Registered Voters						
	Total Approve	Total Disapprove	Strongly Approve	Somewhat Approve	Somewhat Disapprove	Strongly Disapprove	Not Sure
November 10-14, 2017	39%	56%	21%	18%	11%	45%	5%
November 3-7, 2017	40%	55%	22%	18%	10%	45%	5%
October 27-31, 2017	43%	52%	25%	18%	10%	42%	5%
October 21-23, 2017	41%	56%	23%	18%	10%	46%	4%
October 14-16, 2017	41%	54%	23%	18%	9%	45%	6%
October 7-9, 2017	41%	53%	24%	17%	9%	44%	6%
September 30-October 2, 2017	42%	55%	22%	20%	10%	45%	3%
September 23-25, 2017	40%	55%	22%	18%	10%	45%	5%
September 16-18, 2017	43%	51%	23%	20%	11%	40%	7%
September 9-11, 2017	42%	54%	24%	18%	11%	43%	4%
One Year Ago	51%	45%	32%	19%	12%	33%	3%

Presidential Job Approval

"Do you approve or disapprove of the way Donald Trump is handling his job as President?"

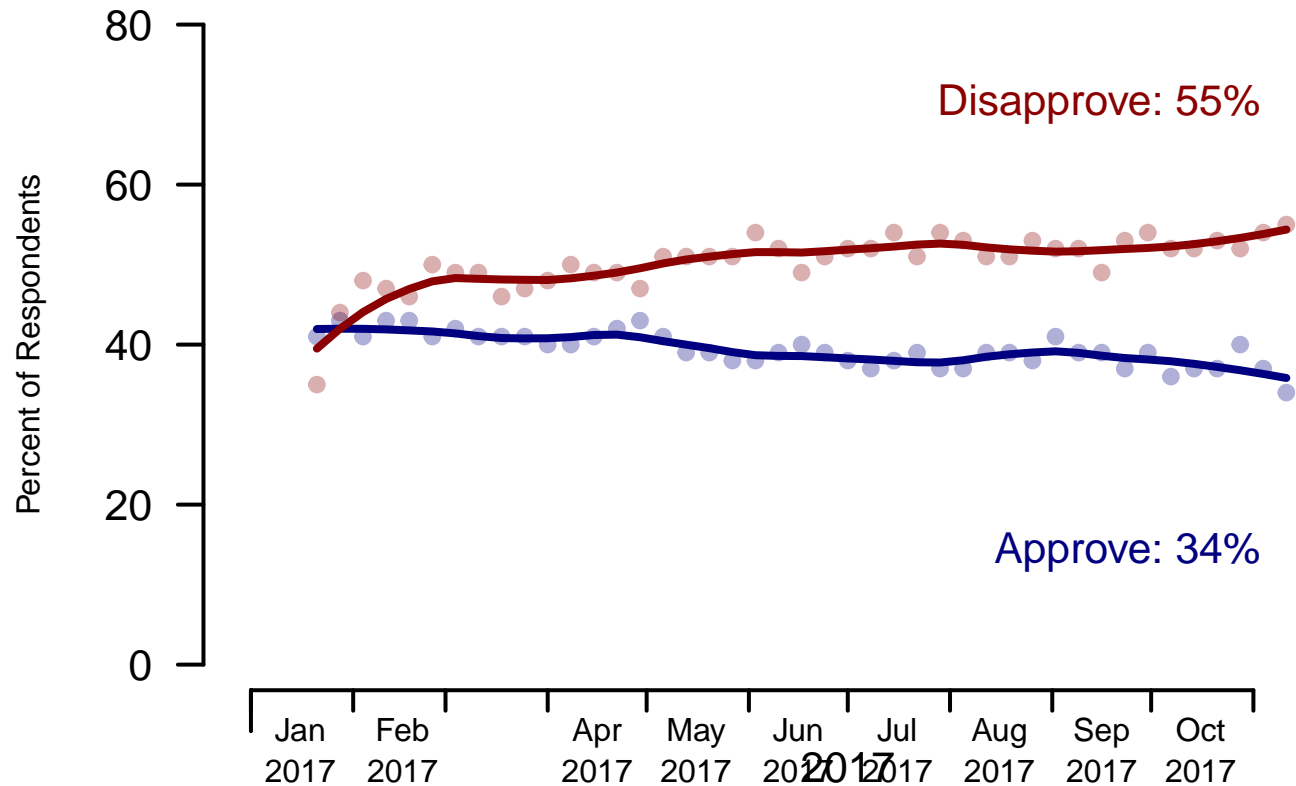


Figure 1: Trump Approval – All Adults

Presidential Job Approval

"Do you approve or disapprove of the way Donald Trump is handling his job as President?"

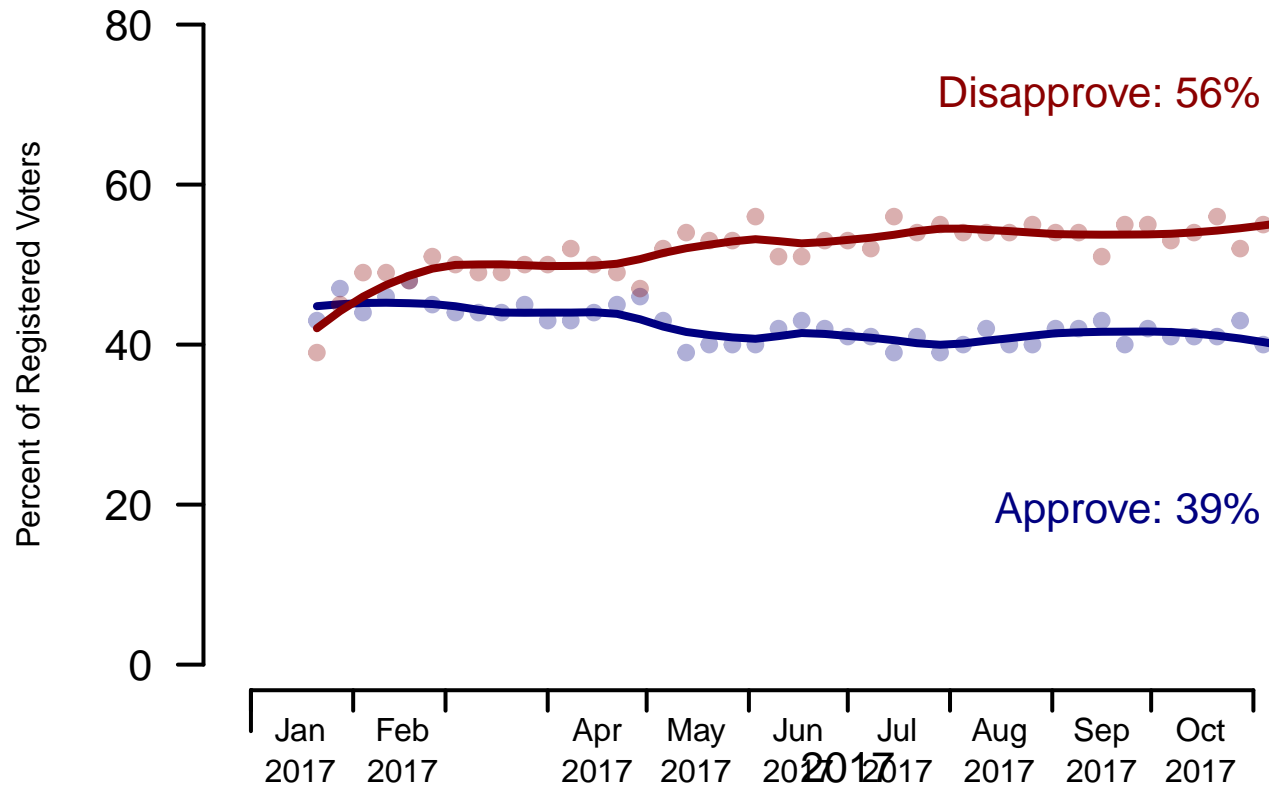


Figure 2: Trump Approval – Registered Voters

2. President Trump Job Approval – This Week – All Adults

Do you approve or disapprove of the way Donald Trump is handling his job as President?

	Age (4 category)					Race			Census Region			
	Total	Under 30	30-44	45-64	65+	White	Black	Hispanic	North-east	Mid-west	South	West
Strongly approve	17%	6%	12%	19%	33%	21%	2%	9%	13%	16%	19%	21%
Somewhat approve	17%	16%	15%	17%	20%	19%	11%	10%	14%	23%	17%	13%
Somewhat disapprove	12%	15%	17%	11%	8%	12%	14%	14%	14%	11%	13%	11%
Strongly disapprove	43%	46%	41%	45%	38%	40%	57%	48%	42%	44%	41%	46%
Not sure	11%	17%	15%	8%	2%	9%	15%	19%	16%	6%	10%	10%
Totals (Unweighted N)	100% (1,500)	100% (222)	100% (417)	100% (556)	100% (305)	100% (1,175)	100% (170)	100% (155)	100% (296)	100% (331)	100% (591)	100% (282)

	Party ID			Ideology			Gender		Family Income (3 category)			Prefer not to say	
	Total	Dem	Ind	Rep	Lib	Mod	Con	Male	Female	Under 50	50-100		100+
Strongly approve	17%	2%	14%	46%	2%	8%	44%	21%	13%	14%	20%	23%	19%
Somewhat approve	17%	6%	18%	31%	4%	17%	27%	19%	15%	15%	18%	24%	18%
Somewhat disapprove	12%	11%	14%	10%	10%	15%	10%	12%	13%	16%	11%	7%	8%
Strongly disapprove	43%	75%	36%	9%	79%	43%	12%	38%	47%	42%	47%	40%	42%
Not sure	11%	6%	18%	4%	5%	17%	6%	9%	12%	13%	4%	6%	14%
Totals (Unweighted N)	100% (1,500)	100% (553)	100% (595)	100% (352)	100% (445)	100% (604)	100% (451)	100% (671)	100% (829)	100% (689)	100% (408)	100% (185)	100% (218)

3. Approval of U.S. Congress – Historical

Overall, do you approve or disapprove of the way that the United States Congress is handling its job?

	All Adults							
	Total Approve	Total Disapprove	Strongly Approve	Somewhat Approve	Neutral	Somewhat Disapprove	Strongly Disapprove	Not Sure
November 10-14, 2017	10%	60%	2%	8%	17%	20%	40%	14%
November 3-7, 2017	10%	61%	3%	7%	15%	23%	38%	14%
October 27-31, 2017	10%	62%	3%	7%	16%	22%	40%	13%
October 21-23, 2017	8%	61%	3%	5%	15%	22%	39%	17%
October 14-16, 2017	10%	62%	3%	7%	14%	20%	42%	14%
October 7-9, 2017	8%	59%	2%	6%	15%	19%	40%	18%
September 30-October 2, 2017	10%	59%	2%	8%	15%	24%	35%	16%
September 23-25, 2017	9%	59%	2%	7%	15%	21%	38%	16%
September 16-18, 2017	10%	58%	2%	8%	16%	24%	34%	17%
September 9-11, 2017	11%	58%	4%	7%	18%	21%	37%	14%
One Year Ago	14%	52%	3%	11%	19%	20%	32%	15%

	Registered Voters							
	Total Approve	Total Disapprove	Strongly Approve	Somewhat Approve	Neutral	Somewhat Disapprove	Strongly Disapprove	Not Sure
November 10-14, 2017	9%	69%	2%	7%	15%	23%	46%	8%
November 3-7, 2017	9%	68%	2%	7%	13%	23%	45%	11%
October 27-31, 2017	9%	69%	3%	6%	14%	23%	46%	8%
October 21-23, 2017	8%	69%	2%	6%	13%	24%	45%	10%
October 14-16, 2017	8%	71%	3%	5%	13%	23%	48%	9%
October 7-9, 2017	7%	69%	2%	5%	14%	22%	47%	10%
September 30-October 2, 2017	9%	66%	2%	7%	14%	25%	41%	10%
September 23-25, 2017	9%	67%	2%	7%	14%	23%	44%	11%
September 16-18, 2017	9%	66%	2%	7%	15%	27%	39%	10%
September 9-11, 2017	10%	65%	3%	7%	17%	23%	42%	7%
One Year Ago	14%	62%	3%	11%	16%	23%	39%	9%

Congress Approval

"Do you approve of the way the U.S. Congress is handling its job?"

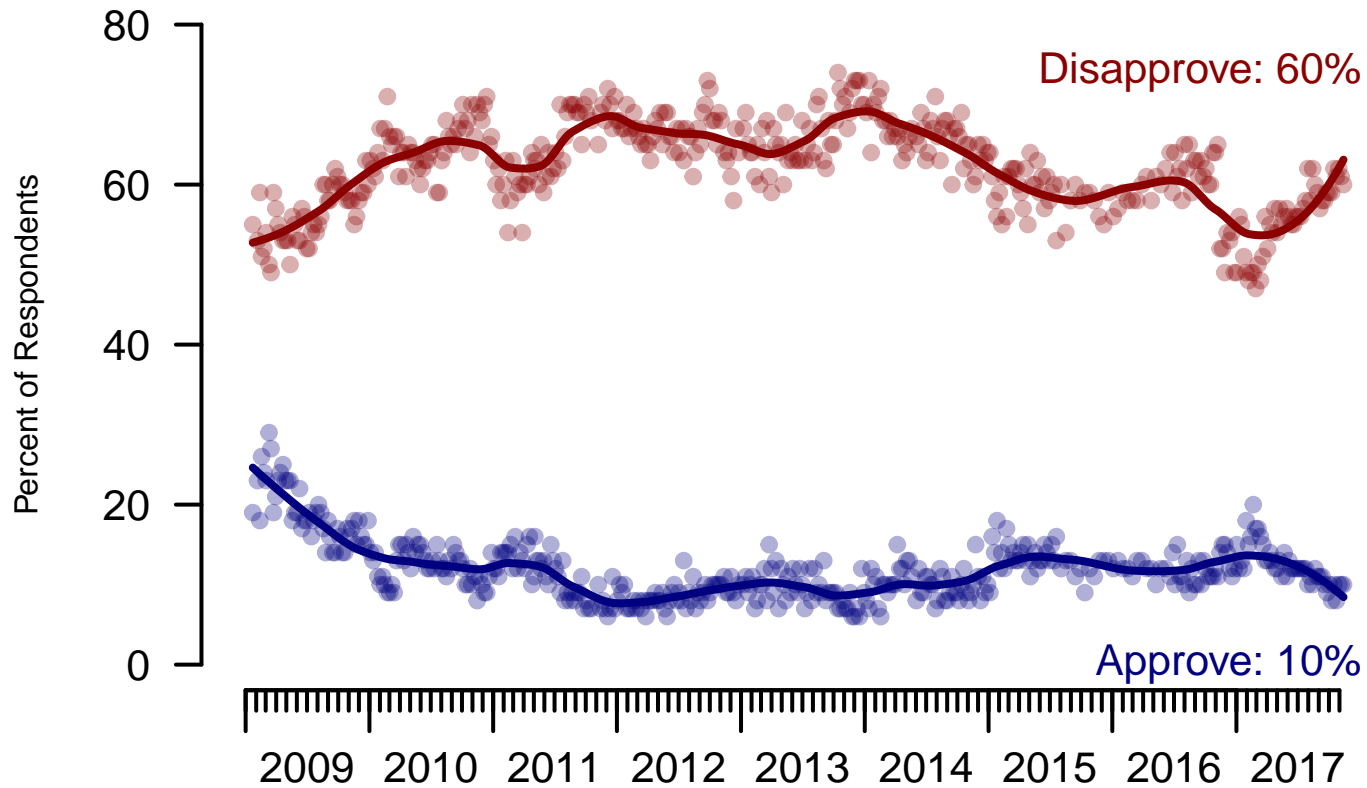


Figure 3: Congress Approval – All Adults

Congress Approval

"Do you approve of the way the
U.S. Congress is handling its job?"

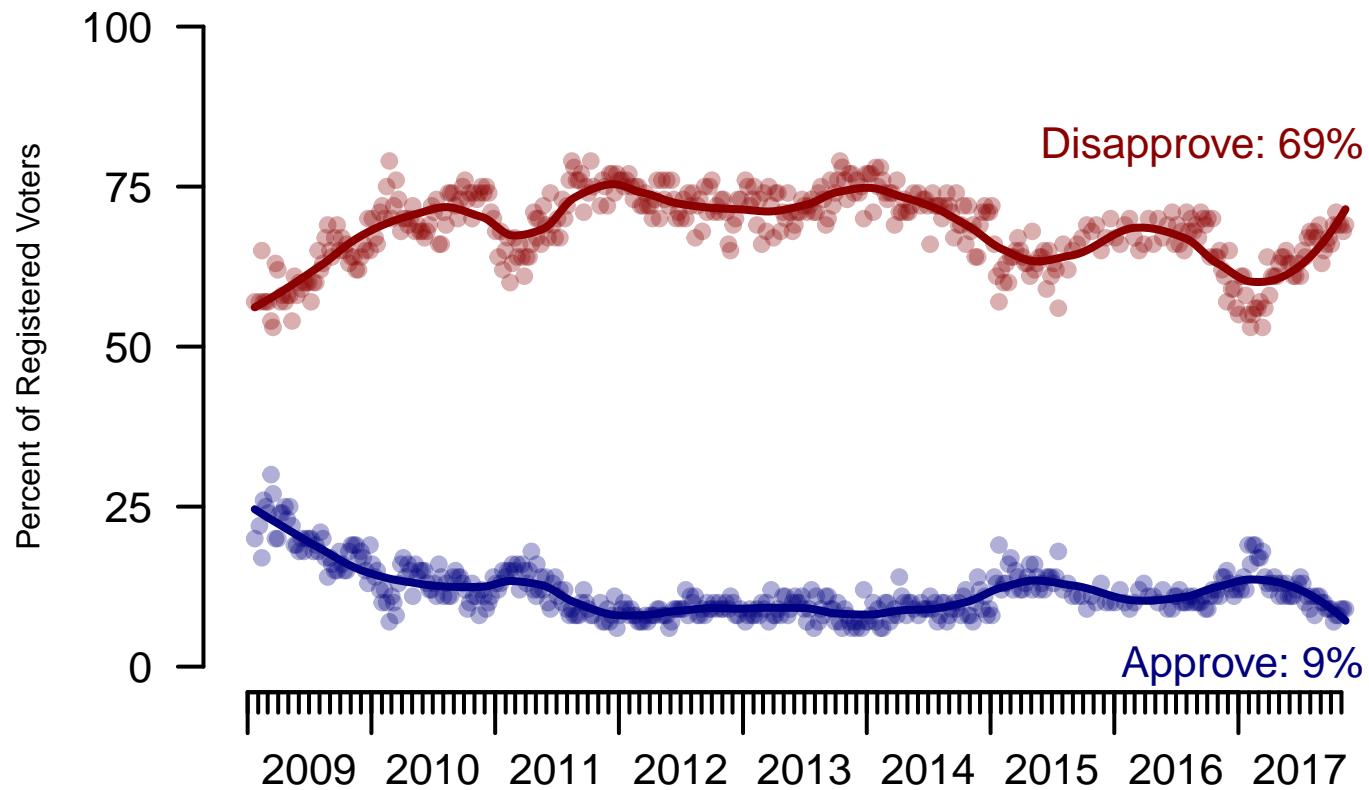


Figure 4: Congress Approval – Registered Voters

4. Approval of U.S. Congress – This Week – All Adults

Overall, do you approve or disapprove of the way that the United States Congress is handling its job?

	Age (4 category)					Race			Census Region			
	Total	Under 30	30-44	45-64	65+	White	Black	Hispanic	North-east	Mid-west	South	West
Strongly approve	2%	1%	4%	1%	0%	1%	2%	2%	1%	1%	2%	2%
Somewhat approve	8%	9%	7%	9%	5%	8%	5%	6%	6%	7%	9%	6%
Neither approve nor disapprove	17%	23%	20%	14%	11%	16%	19%	21%	23%	14%	15%	16%
Somewhat disapprove	20%	19%	19%	19%	24%	22%	15%	14%	16%	21%	21%	20%
Strongly disapprove	40%	24%	31%	46%	56%	41%	36%	34%	33%	45%	38%	44%
Not sure	14%	25%	20%	10%	3%	12%	23%	22%	20%	11%	15%	11%
Totals (Unweighted N)	100% (1,495)	100% (219)	100% (416)	100% (555)	100% (305)	100% (1,174)	100% (167)	100% (154)	100% (295)	100% (328)	100% (590)	100% (282)

	Party ID			Ideology			Gender		Family Income (3 category)				
	Total	Dem	Ind	Rep	Lib	Mod	Con	Male	Female	Under 50	50-100	100+	Prefer not to say
Strongly approve	2%	1%	1%	5%	1%	1%	3%	2%	1%	1%	3%	2%	0%
Somewhat approve	8%	6%	4%	16%	5%	7%	10%	8%	7%	9%	6%	7%	6%
Neither approve nor disapprove	17%	16%	19%	15%	12%	21%	15%	15%	18%	20%	16%	12%	12%
Somewhat disapprove	20%	16%	18%	29%	16%	17%	27%	20%	20%	17%	22%	29%	21%
Strongly disapprove	40%	51%	38%	26%	59%	30%	38%	44%	35%	35%	47%	46%	38%
Not sure	14%	11%	20%	9%	7%	23%	8%	10%	19%	17%	7%	3%	23%
Totals (Unweighted N)	100% (1,495)	100% (549)	100% (594)	100% (352)	100% (444)	100% (601)	100% (450)	100% (668)	100% (827)	100% (686)	100% (407)	100% (185)	100% (217)

5. Direction of country – Historical

Would you say things in this country today are...

	All Adults		
	Right Direction	Wrong Track	Not Sure
November 10-14, 2017	27%	57%	16%
November 3-7, 2017	27%	60%	13%
October 27-31, 2017	30%	57%	13%
October 21-23, 2017	28%	58%	14%
October 14-16, 2017	30%	58%	13%
October 7-9, 2017	27%	59%	14%
September 30-October 2, 2017	25%	62%	13%
September 23-25, 2017	27%	59%	14%
September 16-18, 2017	30%	56%	14%
September 9-11, 2017	28%	56%	16%
One Year Ago	23%	60%	16%

	Registered Voters		
	Right Direction	Wrong Track	Not Sure
November 10-14, 2017	30%	58%	12%
November 3-7, 2017	27%	62%	11%
October 27-31, 2017	31%	58%	10%
October 21-23, 2017	31%	60%	9%
October 14-16, 2017	31%	59%	10%
October 7-9, 2017	29%	60%	11%
September 30-October 2, 2017	27%	63%	10%
September 23-25, 2017	28%	60%	12%
September 16-18, 2017	31%	59%	10%
September 9-11, 2017	31%	57%	12%
One Year Ago	22%	67%	12%

Direction of Country

"Would you say things in this country today are generally headed in the right direction or off on the wrong track?"

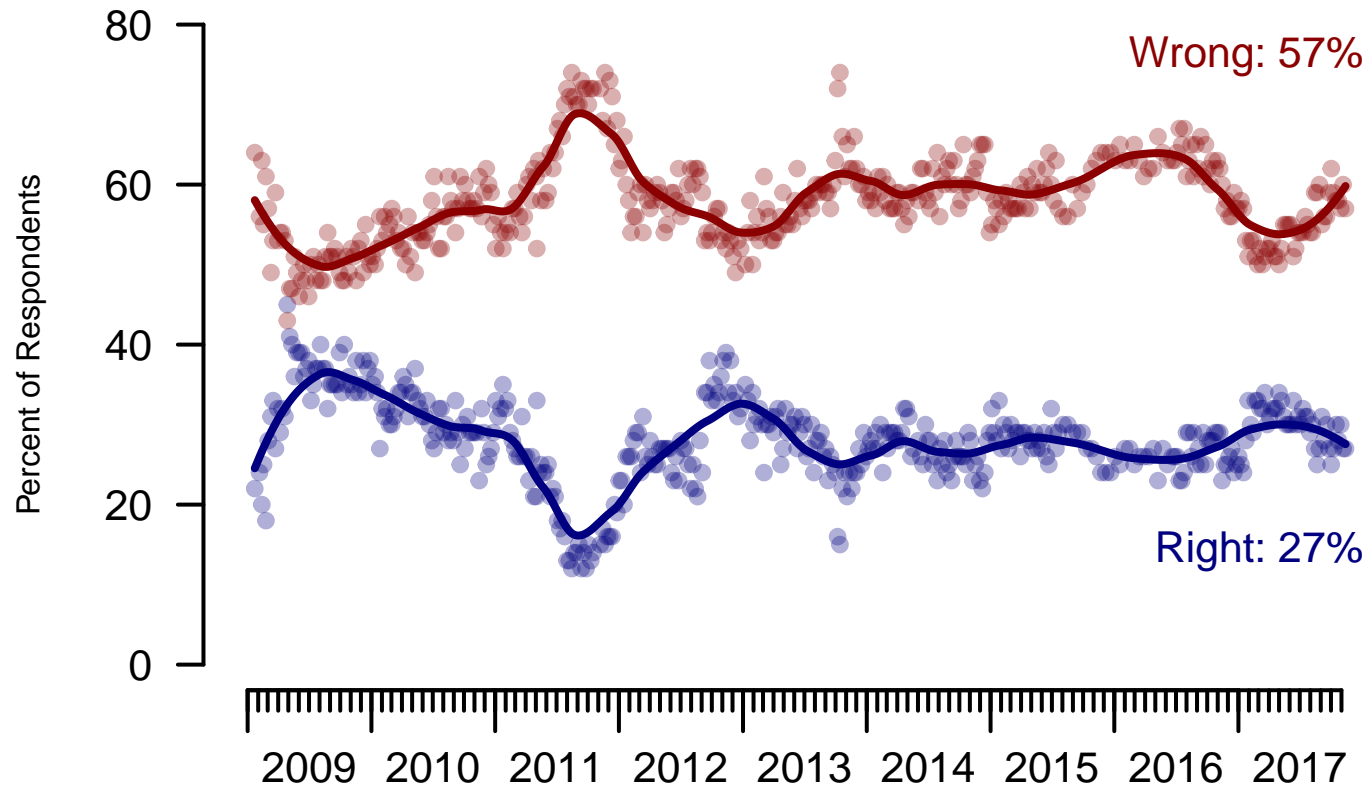


Figure 5: Direction of Country – All Adults

Direction of Country

"Would you say things in this country today are generally headed in the right direction or off on the wrong track?"

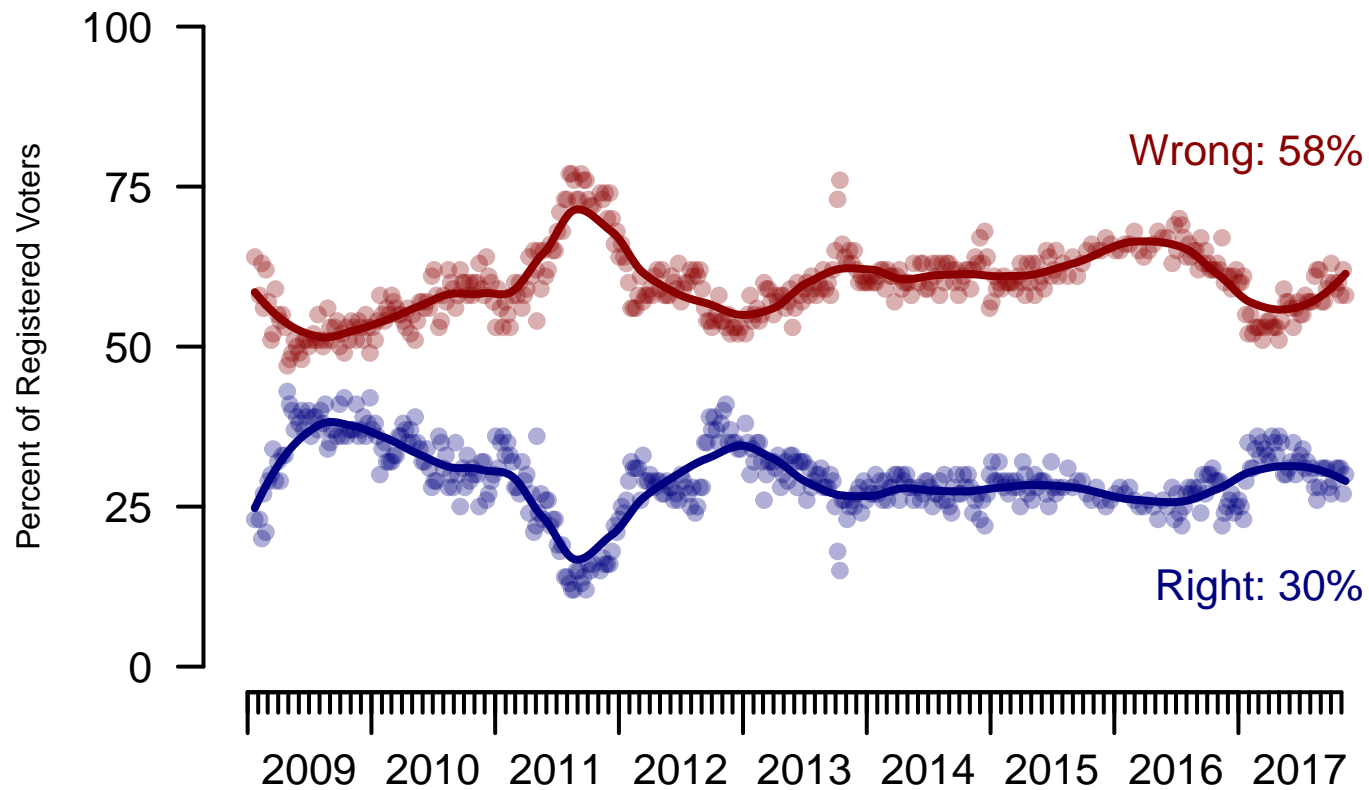


Figure 6: Direction of Country – Registered Voters

6. Direction of Country – This Week – All Adults

Would you say things in this country today are...

	Age (4 category)					Race			Census Region			
	Total	Under 30	30-44	45-64	65+	White	Black	Hispanic	North-east	Mid-west	South	West
Generally headed in the right direction	27%	17%	22%	29%	39%	30%	17%	20%	23%	30%	28%	24%
Off on the wrong track	57%	61%	60%	56%	51%	56%	64%	55%	59%	58%	55%	59%
Not sure	16%	22%	18%	16%	9%	14%	19%	25%	18%	12%	17%	17%
Totals (Unweighted N)	100% (1,500)	100% (222)	100% (417)	100% (556)	100% (305)	100% (1,175)	100% (170)	100% (155)	100% (296)	100% (331)	100% (591)	100% (282)

	Party ID			Ideology			Gender		Family Income (3 category)				
	Total	Dem	Ind	Rep	Lib	Mod	Con	Male	Female	Under 50	50-100	100+	Prefer not to say
Generally headed in the right direction	27%	10%	26%	53%	6%	21%	53%	33%	21%	23%	32%	37%	24%
Off on the wrong track	57%	79%	53%	32%	85%	56%	34%	53%	61%	58%	58%	56%	53%
Not sure	16%	11%	21%	14%	9%	23%	13%	14%	18%	19%	10%	7%	23%
Totals (Unweighted N)	100% (1,500)	100% (553)	100% (595)	100% (352)	100% (445)	100% (604)	100% (451)	100% (671)	100% (829)	100% (689)	100% (408)	100% (185)	100% (218)

The Economist/YouGov Poll
November 12 - 14, 2017



Sponsorship	<i>The Economist</i>
Fieldwork	YouGov
Interviewing Dates	November 12 - 14, 2017
Target population	U.S. citizens, aged 18 and over.
Sampling method	Respondents were selected from YouGov's opt-in Internet panel using sample matching. A random sample (stratified by age, gender, race, education, and region) was selected from the 2014 American Community Study. Voter registration was imputed from the November 2014 Current Population Survey Registration and Voting Supplement.
Weighting	The sample was weighted based on age, gender, race, education, and 2016 Presidential vote. The weights range from 0.22 to 3.88, with a mean of one and a standard deviation of 0.6.
Number of respondents	1500
Margin of error	± 3% (adjusted for weighting)
Margin of error (Registered Voters)	± 3.3% (adjusted for weighting)
Survey mode	Web-based interviews
Full results	Available online at http://today.yougov.com/news/categories/economist/ .