

Interviewing: September 16 - 19, 2018  
Sample: 1500 Adults nationwide online  
1004 registered voters nationwide online



# *The Economist/YouGov* Poll

## Weekly Tracking

For immediate release

**1. Presidential Job Approval – Historical**

Do you approve or disapprove of the way [President's name] is handling his job as President?

	All Adults						
	Total Approve	Total Disapprove	Strongly Approve	Somewhat Approve	Somewhat Disapprove	Strongly Disapprove	Not Sure
September 14-18, 2018	41%	50%	23%	18%	11%	39%	9%
September 7-11, 2018	42%	48%	24%	18%	10%	38%	10%
August 31-September 4, 2018	38%	53%	22%	16%	11%	42%	9%
August 25-27, 2018	41%	48%	24%	17%	10%	38%	11%
August 18-20, 2018	41%	49%	21%	20%	12%	37%	10%
August 11-13, 2018	42%	49%	24%	18%	10%	39%	9%
August 4-6, 2018	40%	49%	22%	18%	9%	40%	11%
July 28-30, 2018	39%	51%	22%	17%	10%	41%	10%
July 21-23, 2018	41%	50%	22%	19%	11%	39%	9%
July 14-16, 2018	39%	50%	22%	17%	12%	38%	11%
One Year Ago	39%	49%	19%	20%	13%	36%	12%

	Registered Voters						
	Total Approve	Total Disapprove	Strongly Approve	Somewhat Approve	Somewhat Disapprove	Strongly Disapprove	Not Sure
September 14-18, 2018	44%	53%	28%	16%	9%	44%	3%
September 7-11, 2018	44%	52%	28%	16%	9%	43%	4%
August 31-September 4, 2018	43%	54%	27%	16%	10%	44%	3%
August 25-27, 2018	43%	52%	27%	16%	8%	44%	5%
August 18-20, 2018	44%	52%	26%	18%	9%	43%	5%
August 11-13, 2018	46%	50%	29%	17%	8%	42%	4%
August 4-6, 2018	44%	51%	29%	15%	7%	44%	4%
July 28-30, 2018	43%	53%	27%	16%	9%	44%	4%
July 21-23, 2018	43%	54%	26%	17%	10%	44%	4%
July 14-16, 2018	44%	52%	28%	16%	9%	43%	4%
One Year Ago	43%	51%	23%	20%	11%	40%	7%

## Presidential Job Approval

"Do you approve or disapprove of the way  
Donald Trump is handling his job as President?"

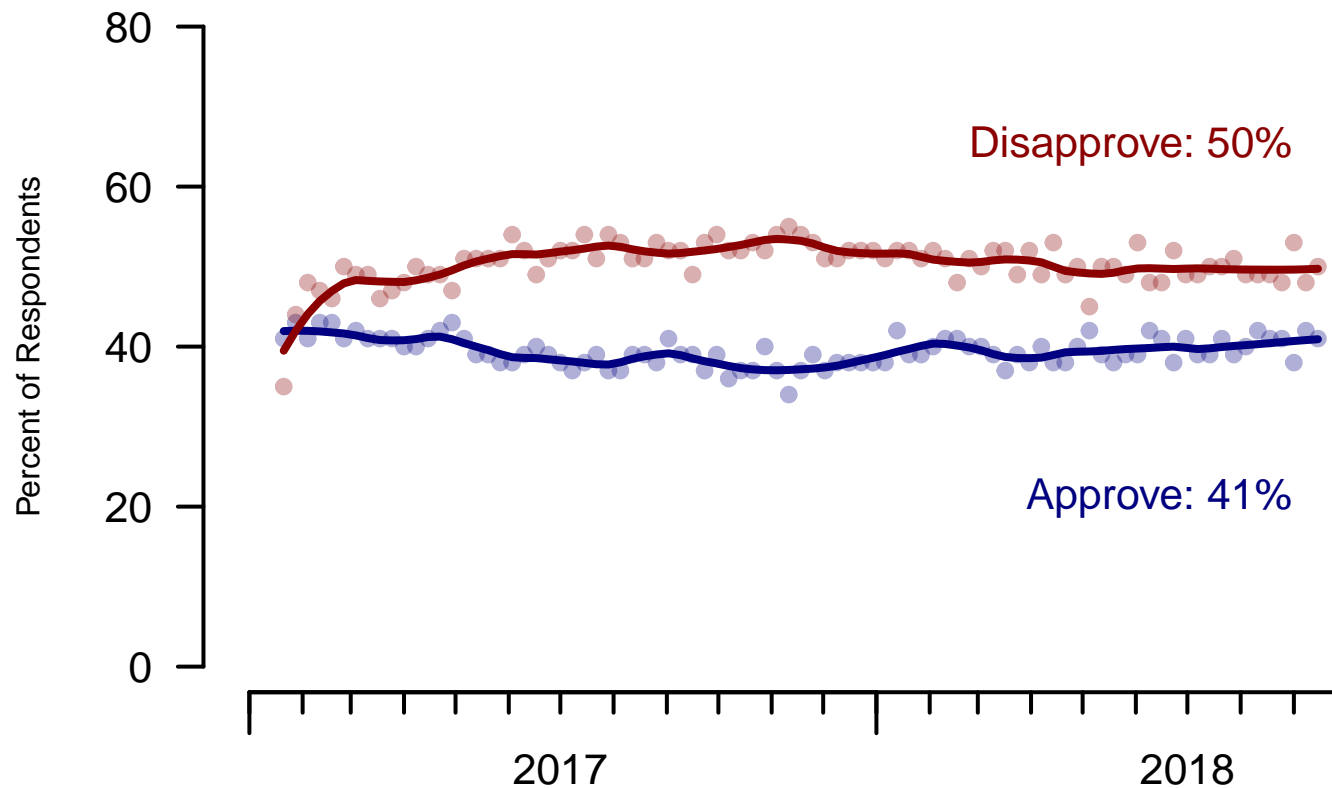


Figure 1: Trump Approval – All Adults

## Presidential Job Approval

"Do you approve or disapprove of the way  
Donald Trump is handling his job as President?"

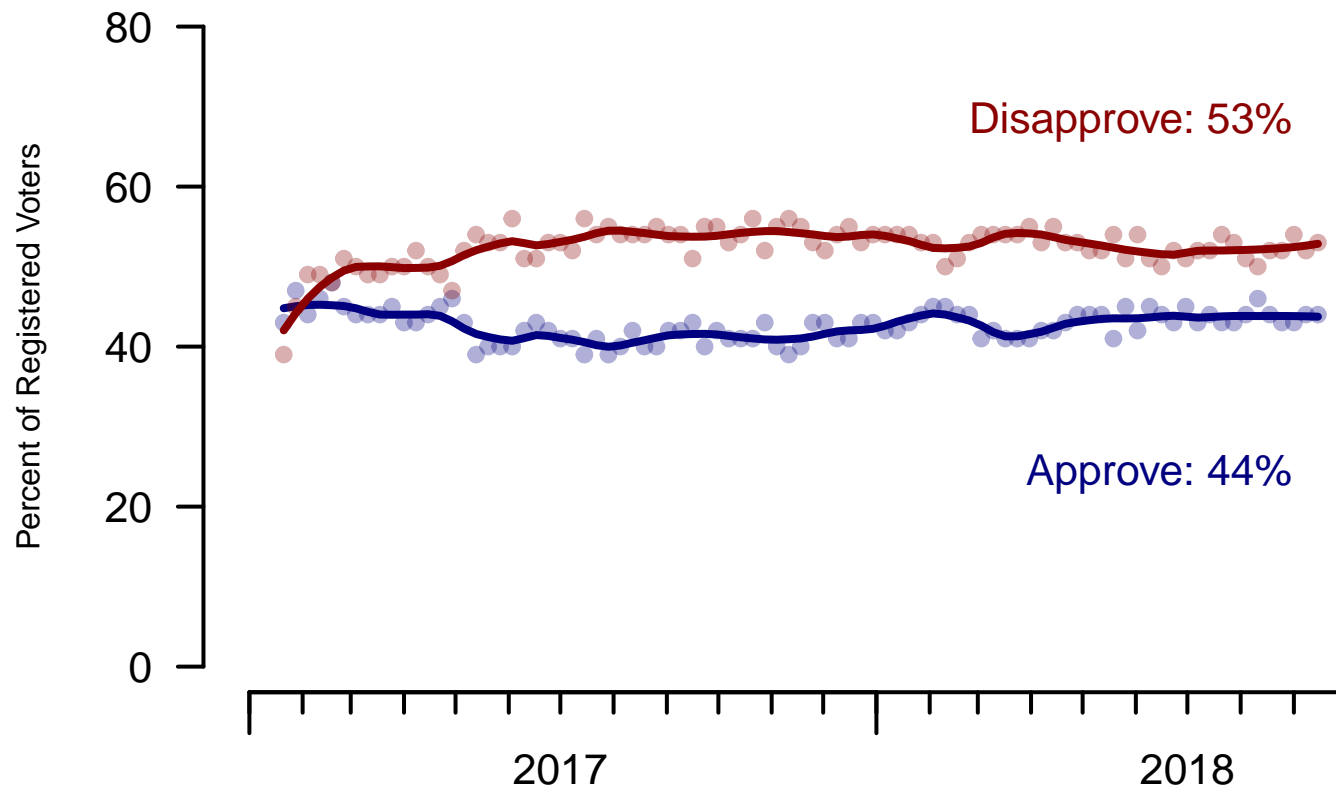


Figure 2: Trump Approval – Registered Voters

**2. President Trump Job Approval – This Week – All Adults**

Do you approve or disapprove of the way Donald Trump is handling his job as President?

	Age (4 category)					Race			Census Region			
	Total	Under 30	30-44	45-64	65+	White	Black	Hispanic	North-east	Mid-west	South	West
Strongly approve	23%	15%	15%	22%	41%	27%	3%	13%	20%	24%	23%	24%
Somewhat approve	18%	21%	18%	19%	10%	18%	14%	16%	19%	15%	21%	13%
Somewhat disapprove	11%	16%	12%	10%	7%	11%	9%	11%	14%	8%	12%	9%
Strongly disapprove	39%	32%	41%	42%	40%	36%	57%	39%	35%	46%	36%	42%
Not sure	9%	17%	14%	6%	2%	7%	16%	20%	13%	8%	8%	11%
Totals (Unweighted N)	100% (1,500)	100% (250)	100% (439)	100% (501)	100% (310)	100% (1,169)	100% (175)	100% (156)	100% (282)	100% (327)	100% (583)	100% (308)

	Party ID				Ideology			Gender		Family Income (3 category)			
	Total	Dem	Ind	Rep	Lib	Mod	Con	Male	Female	Under 50	50-100	100+	Prefer not to say
Strongly approve	23%	3%	19%	54%	5%	10%	53%	26%	19%	20%	28%	24%	22%
Somewhat approve	18%	10%	18%	26%	9%	17%	26%	20%	16%	18%	16%	20%	15%
Somewhat disapprove	11%	13%	12%	7%	8%	16%	7%	11%	11%	14%	10%	8%	6%
Strongly disapprove	39%	72%	33%	8%	76%	39%	9%	35%	43%	38%	40%	44%	37%
Not sure	9%	3%	18%	4%	2%	18%	5%	8%	11%	10%	5%	4%	20%
Totals (Unweighted N)	100% (1,500)	100% (530)	100% (602)	100% (368)	100% (444)	100% (593)	100% (463)	100% (666)	100% (834)	100% (659)	100% (443)	100% (204)	100% (194)

### 3. Approval of U.S. Congress – Historical

Overall, do you approve or disapprove of the way that the United States Congress is handling its job?

	All Adults							
	Total Approve	Total Disapprove	Strongly Approve	Somewhat Approve	Neutral	Somewhat Disapprove	Strongly Disapprove	Not Sure
September 14-18, 2018	14%	56%	4%	10%	14%	20%	36%	16%
September 7-11, 2018	13%	57%	3%	10%	15%	23%	34%	16%
August 31-September 4, 2018	11%	60%	3%	8%	13%	24%	36%	17%
August 25-27, 2018	15%	57%	4%	11%	14%	24%	33%	15%
August 18-20, 2018	11%	57%	2%	9%	17%	25%	32%	15%
August 11-13, 2018	13%	59%	4%	9%	14%	22%	37%	14%
August 4-6, 2018	13%	59%	3%	10%	14%	22%	37%	14%
July 28-30, 2018	11%	60%	3%	8%	13%	21%	39%	15%
July 21-23, 2018	11%	58%	2%	9%	17%	22%	36%	14%
July 14-16, 2018	12%	58%	4%	8%	13%	23%	35%	17%
One Year Ago	10%	58%	2%	8%	16%	24%	34%	17%

	Registered Voters							
	Total Approve	Total Disapprove	Strongly Approve	Somewhat Approve	Neutral	Somewhat Disapprove	Strongly Disapprove	Not Sure
September 14-18, 2018	15%	65%	4%	11%	12%	23%	42%	8%
September 7-11, 2018	13%	66%	3%	10%	14%	24%	42%	7%
August 31-September 4, 2018	11%	69%	2%	9%	12%	26%	43%	8%
August 25-27, 2018	14%	67%	3%	11%	12%	26%	41%	8%
August 18-20, 2018	12%	66%	3%	9%	15%	26%	40%	8%
August 11-13, 2018	11%	70%	3%	8%	11%	26%	44%	8%
August 4-6, 2018	12%	68%	2%	10%	12%	25%	43%	7%
July 28-30, 2018	12%	70%	3%	9%	12%	23%	47%	6%
July 21-23, 2018	9%	71%	1%	8%	12%	26%	45%	8%
July 14-16, 2018	11%	67%	3%	8%	12%	25%	42%	10%
One Year Ago	9%	66%	2%	7%	15%	27%	39%	10%

## Congress Approval

"Do you approve of the way the  
U.S. Congress is handling its job?"

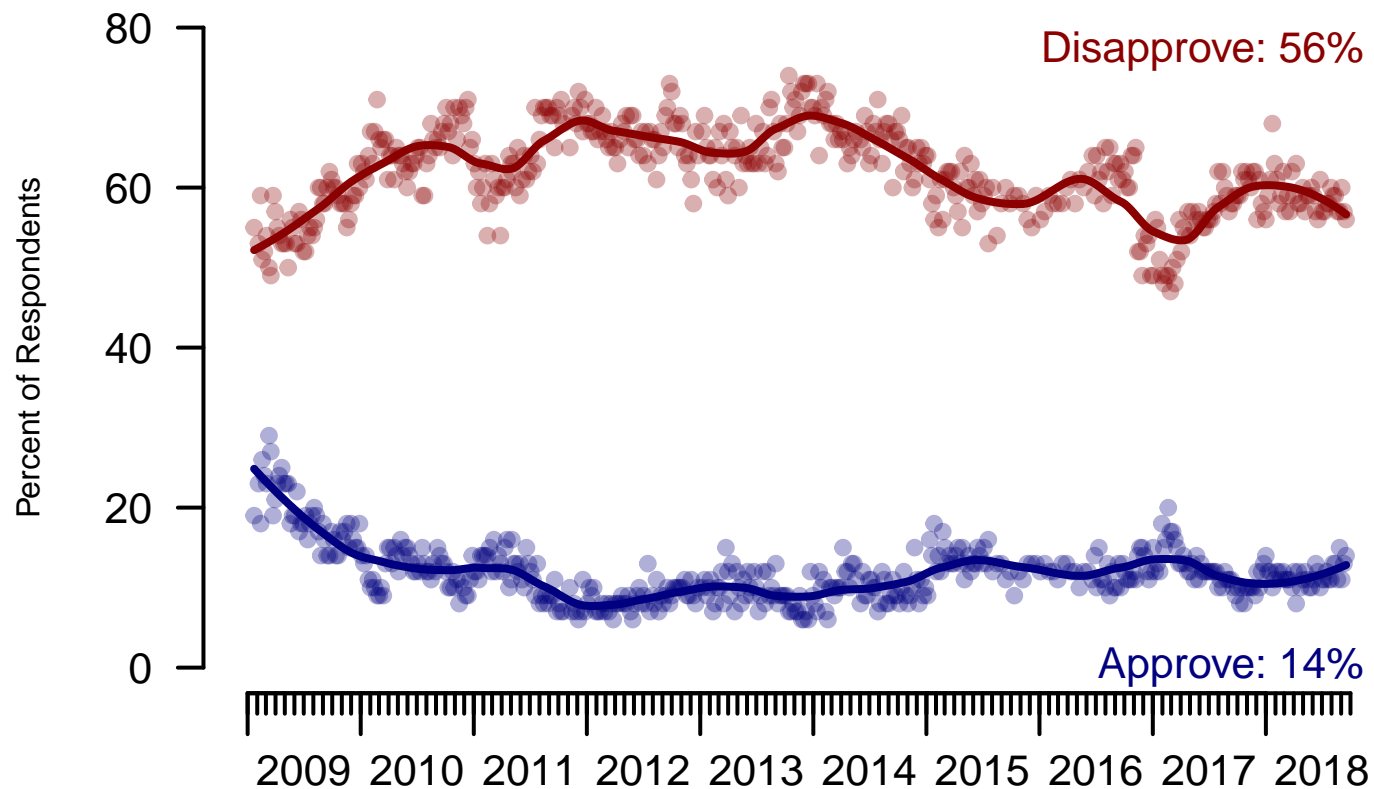


Figure 3: Congress Approval – All Adults

## Congress Approval

"Do you approve of the way the  
U.S. Congress is handling its job?"

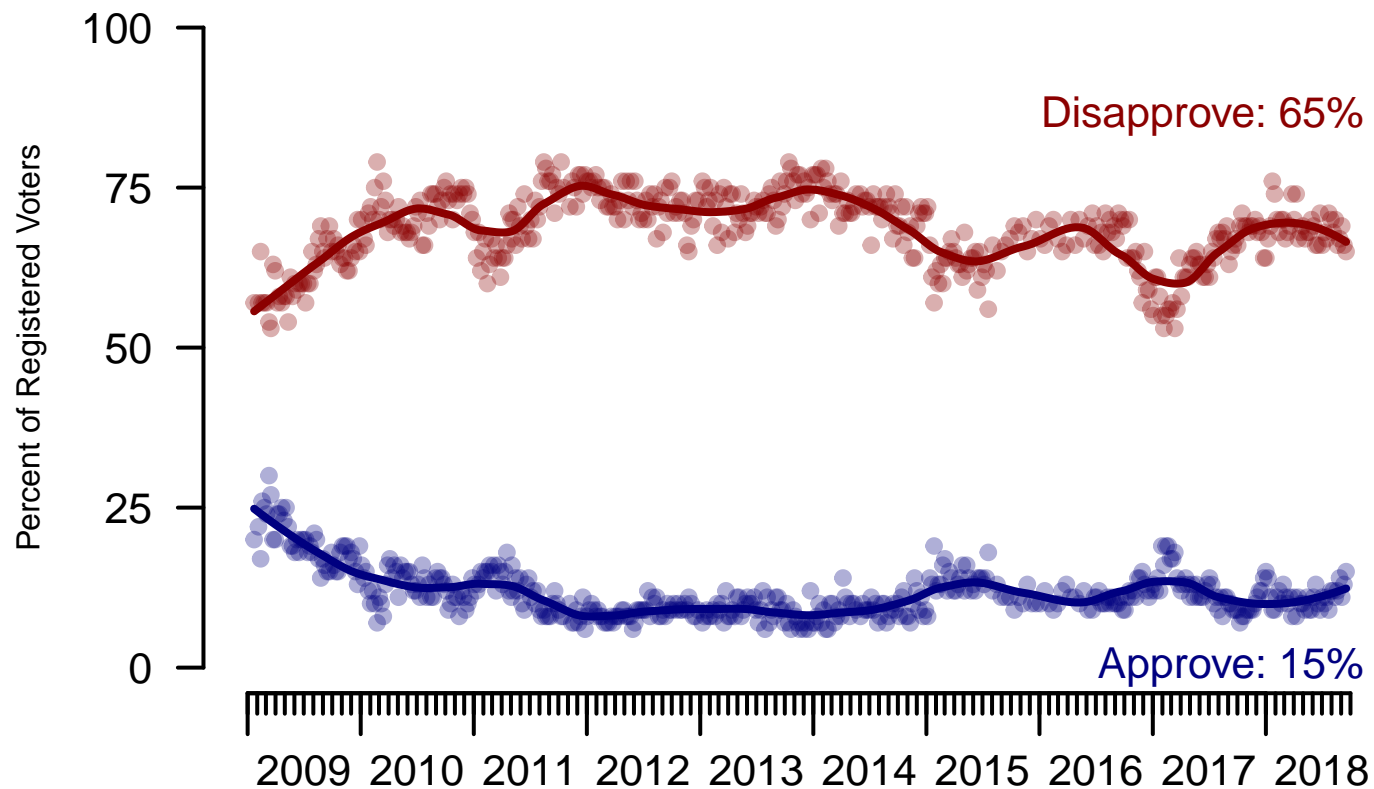


Figure 4: Congress Approval – Registered Voters



**4. Approval of U.S. Congress – This Week – All Adults**

Overall, do you approve or disapprove of the way that the United States Congress is handling its job?

	Age (4 category)					Race			Census Region			
	Total	Under 30	30-44	45-64	65+	White	Black	Hispanic	North-east	Mid-west	South	West
Strongly approve	4%	7%	5%	3%	1%	4%	4%	1%	5%	3%	4%	3%
Somewhat approve	10%	14%	10%	8%	9%	10%	7%	11%	10%	8%	12%	8%
Neither approve nor disapprove	14%	18%	15%	14%	10%	13%	19%	17%	17%	11%	16%	13%
Somewhat disapprove	20%	12%	17%	24%	28%	22%	16%	14%	17%	22%	20%	23%
Strongly disapprove	36%	24%	31%	40%	47%	36%	35%	33%	31%	42%	34%	38%
Not sure	16%	25%	22%	11%	6%	14%	20%	24%	21%	14%	14%	15%
Totals (Unweighted N)	100% (1,489)	100% (245)	100% (435)	100% (499)	100% (310)	100% (1,163)	100% (172)	100% (154)	100% (281)	100% (325)	100% (578)	100% (305)

	Party ID				Ideology			Gender		Family Income (3 category)			
	Total	Dem	Ind	Rep	Lib	Mod	Con	Male	Female	Under 50	50-100	100+	Prefer not to say
Strongly approve	4%	3%	3%	8%	3%	2%	6%	6%	2%	3%	5%	6%	1%
Somewhat approve	10%	6%	7%	19%	6%	8%	15%	12%	8%	10%	11%	13%	3%
Neither approve nor disapprove	14%	14%	14%	16%	10%	19%	12%	13%	15%	17%	14%	7%	12%
Somewhat disapprove	20%	20%	18%	24%	15%	16%	30%	21%	20%	20%	22%	22%	18%
Strongly disapprove	36%	46%	35%	24%	57%	29%	26%	38%	34%	31%	37%	46%	39%
Not sure	16%	10%	23%	9%	9%	24%	10%	10%	21%	18%	10%	6%	27%
Totals (Unweighted N)	100% (1,489)	100% (529)	100% (593)	100% (367)	100% (442)	100% (585)	100% (462)	100% (661)	100% (828)	100% (657)	100% (441)	100% (203)	100% (188)

**5. Direction of country – Historical**

Would you say things in this country today are...

	All Adults		
	Right Direction	Wrong Track	Not Sure
September 14-18, 2018	39%	48%	13%
September 7-11, 2018	37%	49%	14%
August 31-September 4, 2018	35%	52%	13%
August 25-27, 2018	38%	48%	14%
August 18-20, 2018	37%	49%	15%
August 11-13, 2018	36%	52%	11%
August 4-6, 2018	37%	51%	12%
July 28-30, 2018	36%	51%	13%
July 21-23, 2018	36%	52%	12%
July 14-16, 2018	36%	51%	13%
One Year Ago	30%	56%	14%

	Registered Voters		
	Right Direction	Wrong Track	Not Sure
September 14-18, 2018	42%	50%	7%
September 7-11, 2018	40%	53%	7%
August 31-September 4, 2018	39%	54%	7%
August 25-27, 2018	38%	52%	10%
August 18-20, 2018	40%	50%	11%
August 11-13, 2018	40%	52%	7%
August 4-6, 2018	41%	52%	7%
July 28-30, 2018	40%	52%	7%
July 21-23, 2018	38%	53%	9%
July 14-16, 2018	39%	53%	8%
One Year Ago	31%	59%	10%

## Direction of Country

"Would you say things in this country today are generally headed in the right direction or off on the wrong track?"

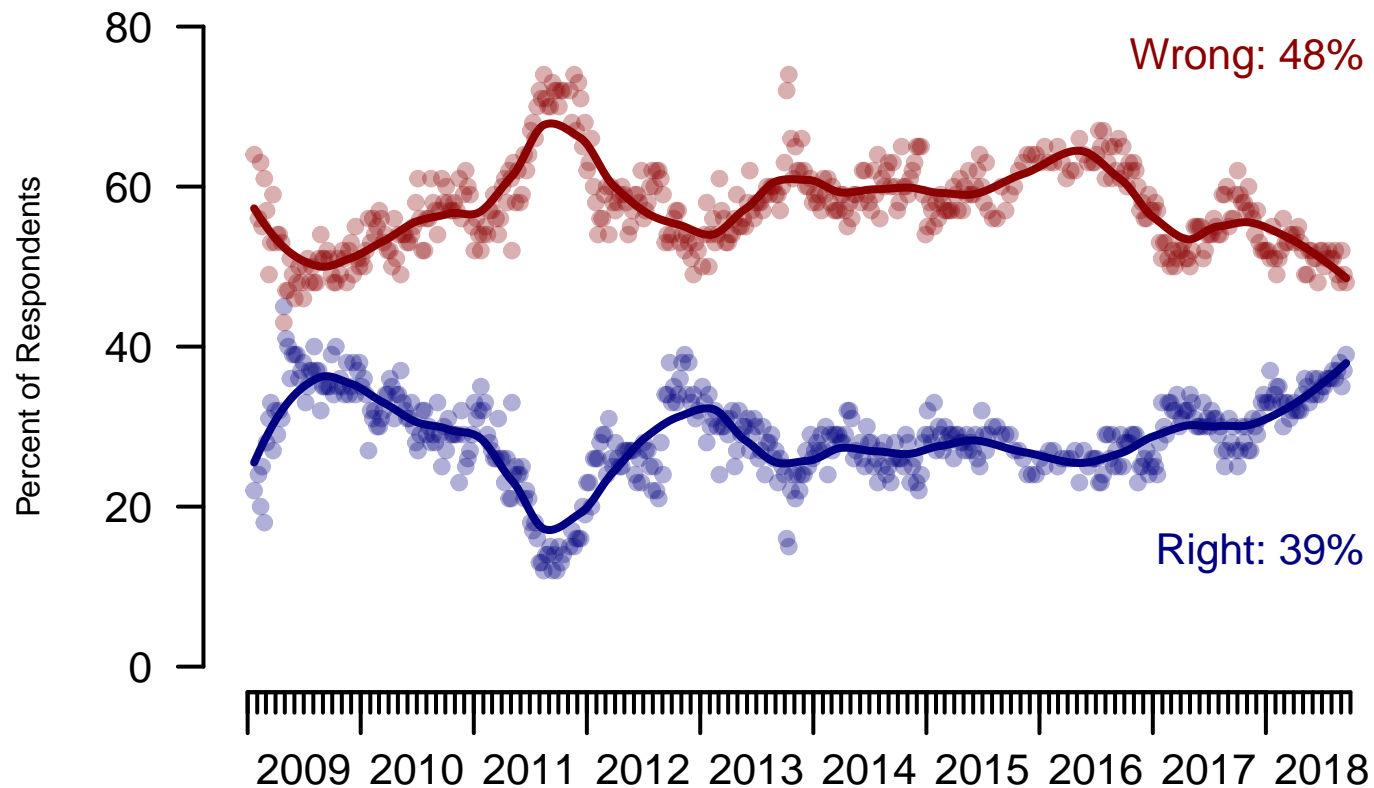


Figure 5: Direction of Country – All Adults

## Direction of Country

"Would you say things in this country today are generally headed in the right direction or off on the wrong track?"

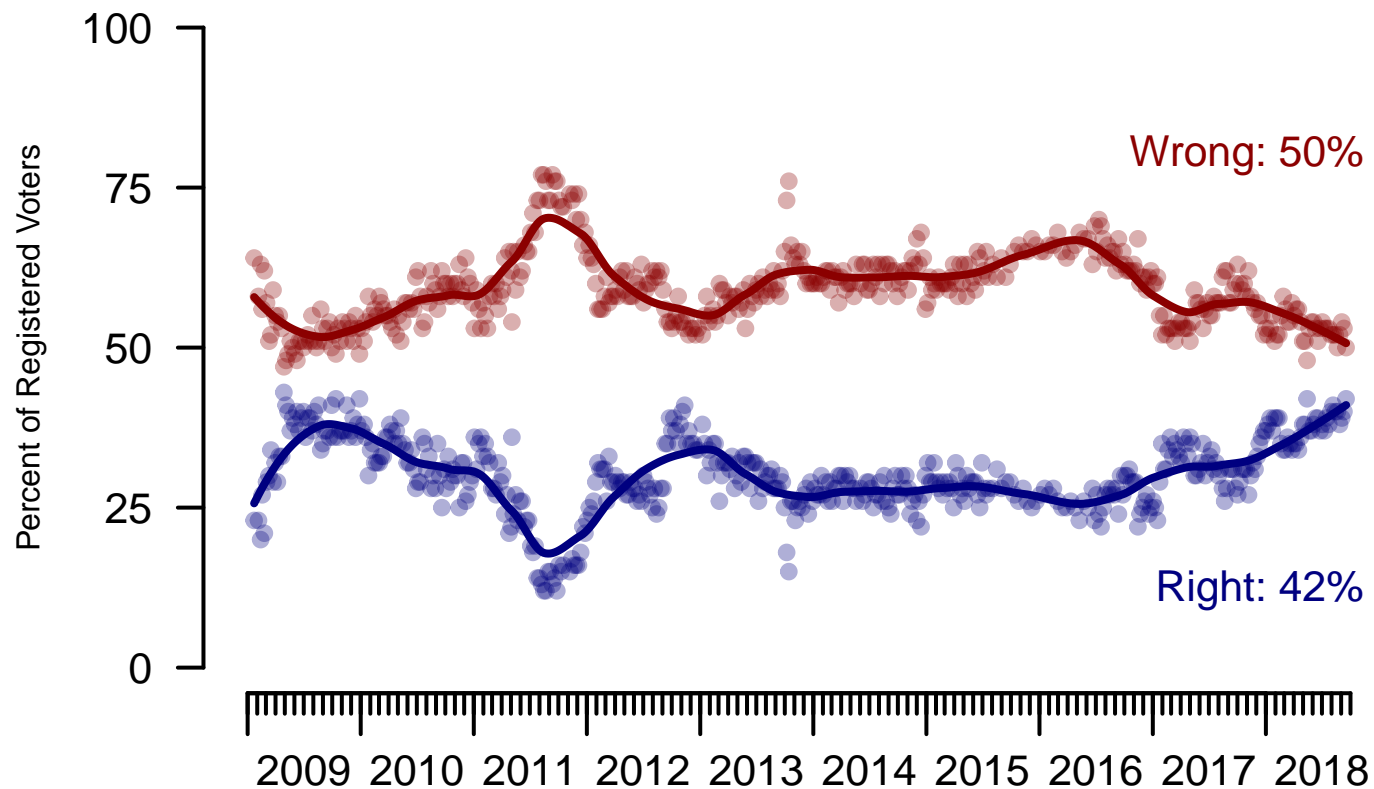


Figure 6: Direction of Country – Registered Voters

**6. Direction of Country – This Week – All Adults**

Would you say things in this country today are...

	Total	Age (4 category)				Race			Census Region			
		Under 30	30-44	45-64	65+	White	Black	Hispanic	North-east	Mid-west	South	West
Generally headed in the right direction	39%	37%	32%	40%	46%	43%	22%	33%	40%	36%	42%	35%
Off on the wrong track	48%	40%	53%	51%	45%	46%	63%	42%	38%	54%	47%	52%
Not sure	13%	23%	15%	9%	8%	11%	15%	24%	22%	10%	11%	13%
Totals (Unweighted N)	100% (1,500)	100% (250)	100% (439)	100% (501)	100% (310)	100% (1,169)	100% (175)	100% (156)	100% (282)	100% (327)	100% (583)	100% (308)

	Total	Party ID			Ideology			Gender		Family Income (3 category)			
		Dem	Ind	Rep	Lib	Mod	Con	Male	Female	Under 50	50-100	100+	Prefer not to say
Generally headed in the right direction	39%	15%	35%	76%	15%	29%	71%	46%	32%	35%	46%	44%	33%
Off on the wrong track	48%	79%	43%	16%	80%	48%	21%	43%	52%	50%	47%	50%	42%
Not sure	13%	7%	22%	7%	6%	23%	7%	11%	15%	15%	7%	6%	25%
Totals (Unweighted N)	100% (1,500)	100% (530)	100% (602)	100% (368)	100% (444)	100% (593)	100% (463)	100% (666)	100% (834)	100% (659)	100% (443)	100% (204)	100% (194)

<b>Sponsorship</b>	<i>The Economist</i>
<b>Fieldwork</b>	YouGov
<b>Interviewing Dates</b>	September 16 - 19, 2018
<b>Target population</b>	U.S. citizens, aged 18 and over.
<b>Sampling method</b>	Respondents were selected from YouGov's opt-in Internet panel using sample matching. A random sample (stratified by age, gender, race, education, and region) was selected from the 2014 American Community Study. Voter registration was imputed from the November 2014 Current Population Survey Registration and Voting Supplement.
<b>Weighting</b>	The sample was weighted based on age, gender, race, education, and 2016 Presidential vote. The weights range from 0.19 to 3.03, with a mean of one and a standard deviation of 0.4.
<b>Number of respondents</b>	1500
<b>Margin of error</b>	± 2.8% (adjusted for weighting)
<b>Margin of error (Registered Voters)</b>	± 3.2% (adjusted for weighting)
<b>Survey mode</b>	Web-based interviews
<b>Full results</b>	Available online at <a href="http://today.yougov.com/news/categories/economist/">http://today.yougov.com/news/categories/economist/</a> .