

Interviewing: May 27 - 29, 2018
Sample: 1500 Adults nationwide online
1005 registered voters nationwide online



The Economist/YouGov Poll

Weekly Tracking

For immediate release

1. Presidential Job Approval – Historical

Do you approve or disapprove of the way [President's name] is handling his job as President?

	All Adults						
	Total Approve	Total Disapprove	Strongly Approve	Somewhat Approve	Somewhat Disapprove	Strongly Disapprove	Not Sure
May 25-29, 2018	39%	49%	22%	17%	9%	40%	11%
May 18-22, 2018	38%	50%	20%	18%	12%	38%	11%
May 11-15, 2018	39%	50%	23%	16%	12%	38%	12%
May 5-7, 2018	42%	45%	23%	19%	9%	36%	12%
April 28-30, 2018	40%	50%	22%	18%	10%	40%	10%
April 21-23, 2018	38%	49%	21%	17%	12%	37%	13%
April 14-16, 2018	38%	53%	20%	18%	13%	40%	9%
April 7-9, 2018	40%	49%	20%	20%	9%	40%	11%
March 31-April 2, 2018	38%	52%	20%	18%	12%	40%	10%
March 24-26, 2018	39%	49%	19%	20%	9%	40%	12%
One Year Ago	38%	51%	17%	21%	13%	38%	11%

	Registered Voters						
	Total Approve	Total Disapprove	Strongly Approve	Somewhat Approve	Somewhat Disapprove	Strongly Disapprove	Not Sure
May 25-29, 2018	45%	51%	29%	16%	8%	43%	4%
May 18-22, 2018	41%	54%	26%	15%	11%	43%	4%
May 11-15, 2018	44%	52%	28%	16%	10%	42%	4%
May 5-7, 2018	44%	52%	27%	17%	10%	42%	4%
April 28-30, 2018	44%	53%	26%	18%	8%	45%	4%
April 21-23, 2018	43%	53%	26%	17%	11%	42%	5%
April 14-16, 2018	42%	55%	25%	17%	11%	44%	3%
April 7-9, 2018	42%	53%	24%	18%	9%	44%	4%
March 31-April 2, 2018	41%	55%	24%	17%	10%	45%	4%
March 24-26, 2018	41%	54%	23%	18%	10%	44%	5%
One Year Ago	40%	53%	20%	20%	11%	42%	7%

Presidential Job Approval

"Do you approve or disapprove of the way Donald Trump is handling his job as President?"

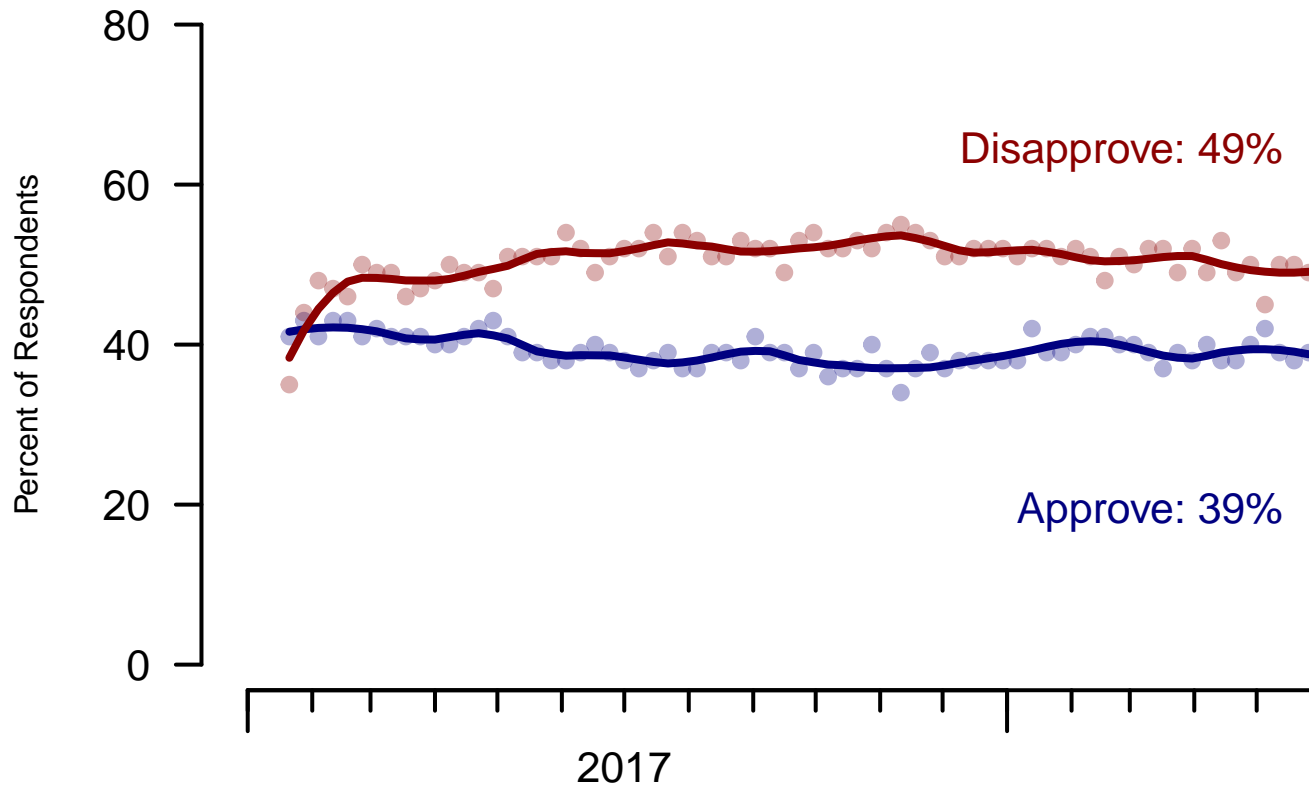


Figure 1: Trump Approval – All Adults

Presidential Job Approval

"Do you approve or disapprove of the way Donald Trump is handling his job as President?"

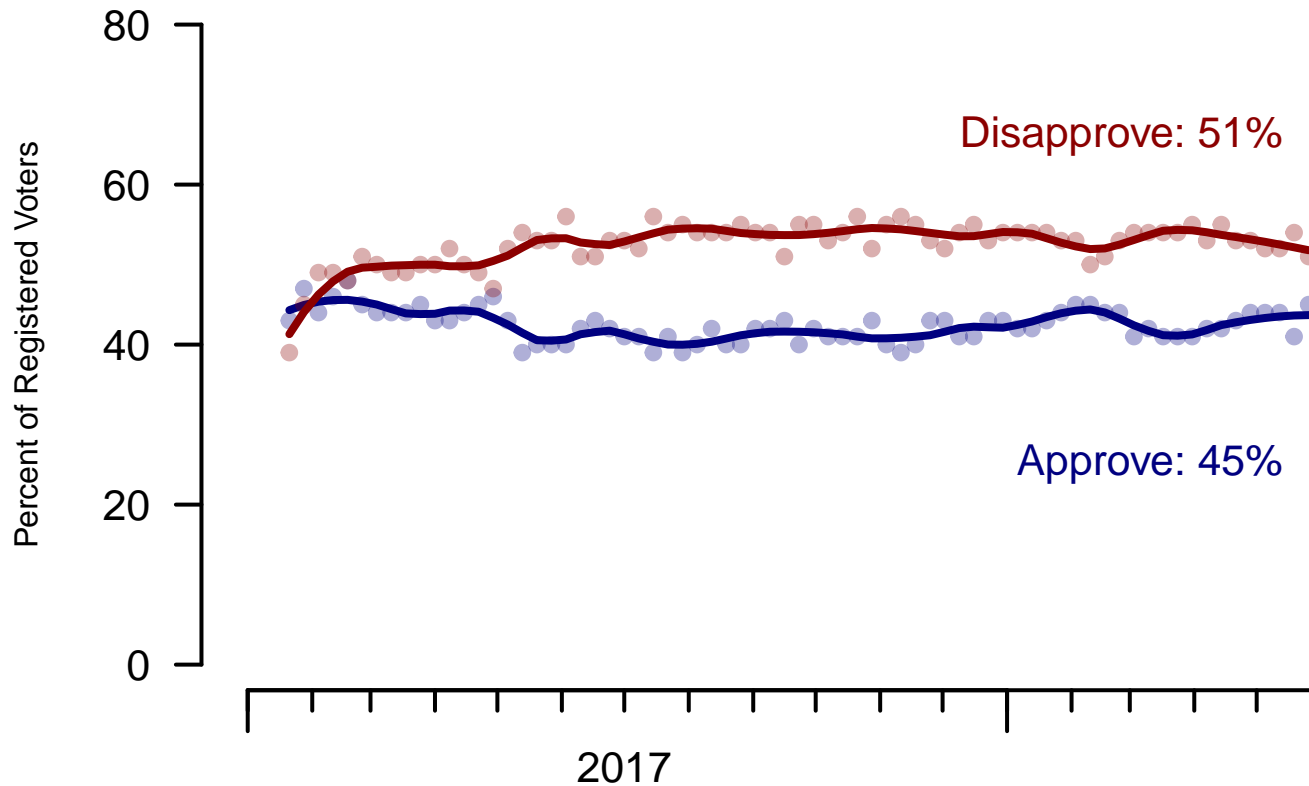


Figure 2: Trump Approval – Registered Voters

2. President Trump Job Approval – This Week – All Adults

Do you approve or disapprove of the way Donald Trump is handling his job as President?

	Age (4 category)					Race			Census Region			
	Total	Under 30	30-44	45-64	65+	White	Black	Hispanic	North-east	Mid-west	South	West
Strongly approve	22%	10%	14%	24%	43%	27%	4%	16%	26%	18%	23%	22%
Somewhat approve	17%	15%	22%	19%	13%	19%	9%	14%	13%	20%	17%	19%
Somewhat disapprove	9%	14%	11%	7%	6%	8%	13%	9%	10%	7%	12%	6%
Strongly disapprove	40%	43%	40%	41%	37%	37%	58%	41%	42%	44%	38%	39%
Not sure	11%	19%	14%	9%	1%	9%	15%	20%	9%	11%	9%	14%
Totals (Unweighted N)	100% (1,500)	100% (203)	100% (465)	100% (523)	100% (309)	100% (1,148)	100% (184)	100% (168)	100% (298)	100% (302)	100% (547)	100% (353)

	Party ID			Ideology			Gender		Family Income (3 category)			Prefer not to say	
	Total	Dem	Ind	Rep	Lib	Mod	Con	Male	Female	Under 50	50-100		100+
Strongly approve	22%	4%	19%	54%	4%	10%	56%	25%	20%	19%	24%	29%	23%
Somewhat approve	17%	6%	20%	28%	4%	20%	24%	20%	15%	17%	19%	19%	15%
Somewhat disapprove	9%	9%	9%	10%	8%	12%	6%	9%	9%	12%	9%	6%	3%
Strongly disapprove	40%	74%	34%	5%	82%	36%	10%	37%	43%	41%	41%	44%	32%
Not sure	11%	6%	18%	3%	2%	21%	3%	9%	12%	11%	6%	1%	26%
Totals (Unweighted N)	100% (1,500)	100% (532)	100% (616)	100% (352)	100% (432)	100% (598)	100% (470)	100% (688)	100% (812)	100% (678)	100% (423)	100% (198)	100% (201)

3. Approval of U.S. Congress – Historical

Overall, do you approve or disapprove of the way that the United States Congress is handling its job?

All Adults								
	Total Approve	Total Disapprove	Strongly Approve	Somewhat Approve	Neutral	Somewhat Disapprove	Strongly Disapprove	Not Sure
May 25-29, 2018	10%	60%	3%	7%	14%	22%	38%	16%
May 18-22, 2018	10%	59%	2%	8%	14%	25%	34%	17%
May 11-15, 2018	11%	59%	3%	8%	14%	25%	34%	15%
May 5-7, 2018	12%	57%	3%	9%	16%	19%	38%	16%
April 28-30, 2018	11%	60%	4%	7%	14%	24%	36%	15%
April 21-23, 2018	10%	58%	2%	8%	14%	23%	35%	18%
April 14-16, 2018	12%	58%	3%	9%	14%	21%	37%	16%
April 7-9, 2018	8%	63%	2%	6%	14%	23%	40%	15%
March 31-April 2, 2018	12%	59%	2%	10%	13%	21%	38%	16%
March 24-26, 2018	10%	62%	3%	7%	12%	21%	41%	16%
One Year Ago	11%	57%	3%	8%	16%	21%	36%	16%

Registered Voters								
	Total Approve	Total Disapprove	Strongly Approve	Somewhat Approve	Neutral	Somewhat Disapprove	Strongly Disapprove	Not Sure
May 25-29, 2018	9%	70%	2%	7%	13%	25%	45%	8%
May 18-22, 2018	9%	68%	2%	7%	13%	28%	40%	10%
May 11-15, 2018	11%	68%	3%	8%	14%	28%	40%	7%
May 5-7, 2018	9%	67%	2%	7%	14%	23%	44%	10%
April 28-30, 2018	10%	69%	4%	6%	12%	25%	44%	8%
April 21-23, 2018	10%	68%	2%	8%	13%	26%	42%	9%
April 14-16, 2018	11%	67%	3%	8%	13%	23%	44%	9%
April 7-9, 2018	8%	74%	2%	6%	10%	26%	48%	8%
March 31-April 2, 2018	11%	70%	2%	9%	11%	24%	46%	9%
March 24-26, 2018	8%	74%	2%	6%	11%	23%	51%	7%
One Year Ago	11%	63%	3%	8%	16%	22%	41%	10%

Congress Approval

"Do you approve of the way the U.S. Congress is handling its job?"

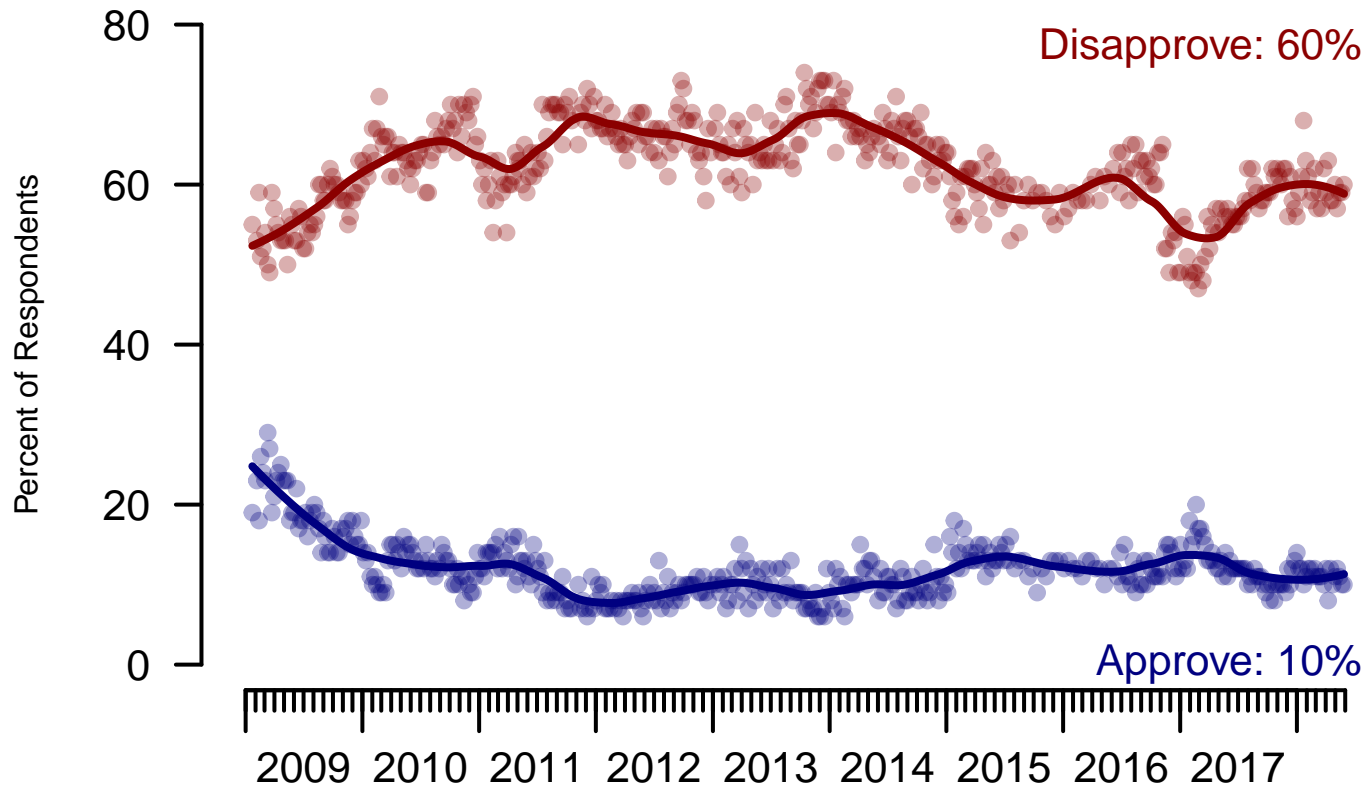


Figure 3: Congress Approval – All Adults

Congress Approval

"Do you approve of the way the
U.S. Congress is handling its job?"

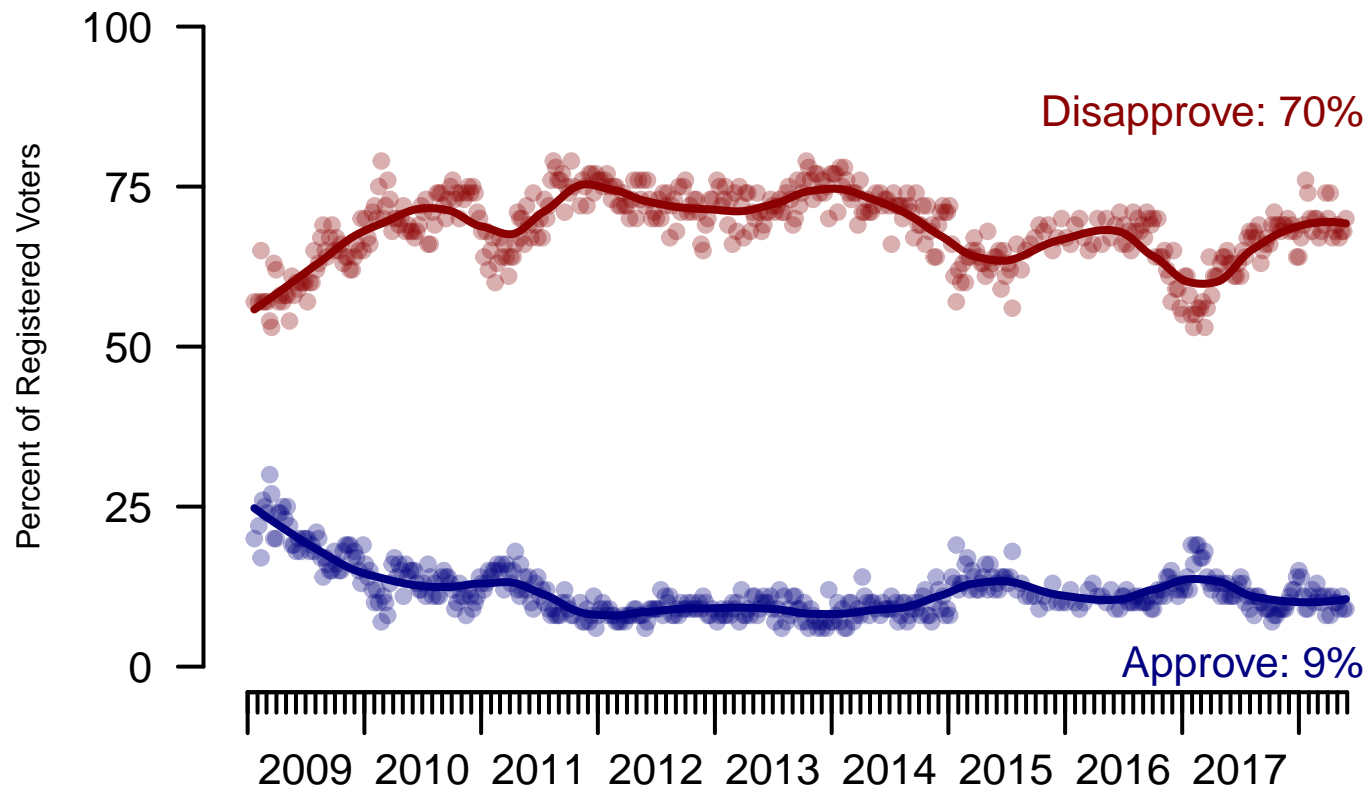


Figure 4: Congress Approval – Registered Voters

4. Approval of U.S. Congress – This Week – All Adults

Overall, do you approve or disapprove of the way that the United States Congress is handling its job?

	Age (4 category)					Race			Census Region			
	Total	Under 30	30-44	45-64	65+	White	Black	Hispanic	North-east	Mid-west	South	West
Strongly approve	3%	5%	4%	1%	1%	2%	4%	5%	4%	2%	3%	2%
Somewhat approve	7%	7%	9%	7%	5%	7%	3%	12%	10%	6%	6%	8%
Neither approve nor disapprove	14%	17%	16%	12%	12%	14%	18%	13%	15%	10%	16%	13%
Somewhat disapprove	22%	19%	17%	23%	29%	24%	20%	11%	20%	26%	22%	21%
Strongly disapprove	38%	29%	32%	40%	51%	40%	34%	29%	36%	41%	36%	40%
Not sure	16%	23%	22%	17%	2%	13%	21%	30%	15%	15%	18%	16%
Totals (Unweighted N)	100% (1,493)	100% (201)	100% (463)	100% (520)	100% (309)	100% (1,143)	100% (183)	100% (167)	100% (296)	100% (300)	100% (546)	100% (351)

	Party ID			Ideology			Gender		Family Income (3 category)			Prefer not to say	
	Total	Dem	Ind	Rep	Lib	Mod	Con	Male	Female	Under 50	50-100		100+
Strongly approve	3%	1%	2%	6%	2%	2%	3%	3%	2%	2%	2%	5%	1%
Somewhat approve	7%	5%	6%	13%	5%	5%	10%	7%	7%	6%	7%	11%	7%
Neither approve nor disapprove	14%	13%	13%	18%	7%	17%	16%	13%	15%	18%	9%	6%	16%
Somewhat disapprove	22%	18%	21%	31%	18%	17%	33%	25%	20%	21%	28%	23%	16%
Strongly disapprove	38%	53%	35%	22%	60%	32%	28%	39%	37%	36%	41%	51%	30%
Not sure	16%	10%	24%	10%	8%	26%	9%	12%	20%	18%	12%	4%	29%
Totals (Unweighted N)	100% (1,493)	100% (528)	100% (613)	100% (352)	100% (430)	100% (593)	100% (470)	100% (685)	100% (808)	100% (675)	100% (422)	100% (198)	100% (198)

5. Direction of country – Historical

Would you say things in this country today are...

	All Adults		
	Right Direction	Wrong Track	Not Sure
May 25-29, 2018	34%	52%	14%
May 18-22, 2018	33%	52%	15%
May 11-15, 2018	35%	49%	16%
May 5-7, 2018	36%	49%	15%
April 28-30, 2018	34%	52%	14%
April 21-23, 2018	32%	53%	15%
April 14-16, 2018	32%	55%	13%
April 7-9, 2018	32%	54%	14%
March 31-April 2, 2018	33%	53%	15%
March 24-26, 2018	32%	54%	14%
One Year Ago	30%	55%	16%

	Registered Voters		
	Right Direction	Wrong Track	Not Sure
May 25-29, 2018	37%	54%	8%
May 18-22, 2018	37%	53%	10%
May 11-15, 2018	42%	48%	10%
May 5-7, 2018	38%	51%	11%
April 28-30, 2018	38%	51%	11%
April 21-23, 2018	36%	54%	9%
April 14-16, 2018	34%	56%	9%
April 7-9, 2018	35%	56%	10%
March 31-April 2, 2018	35%	55%	11%
March 24-26, 2018	34%	57%	9%
One Year Ago	31%	57%	12%

Direction of Country

"Would you say things in this country today are generally headed in the right direction or off on the wrong track?"

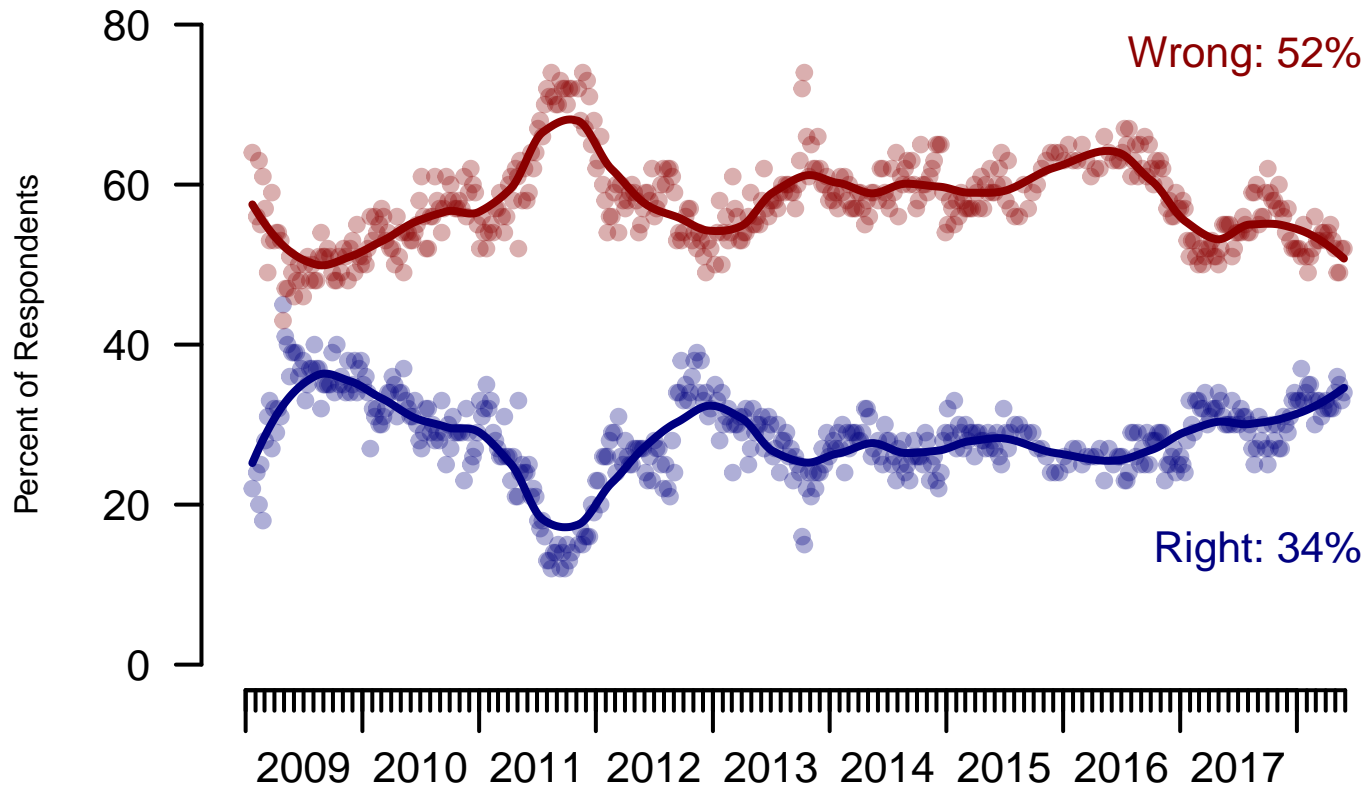


Figure 5: Direction of Country – All Adults

Direction of Country

"Would you say things in this country today are generally headed in the right direction or off on the wrong track?"

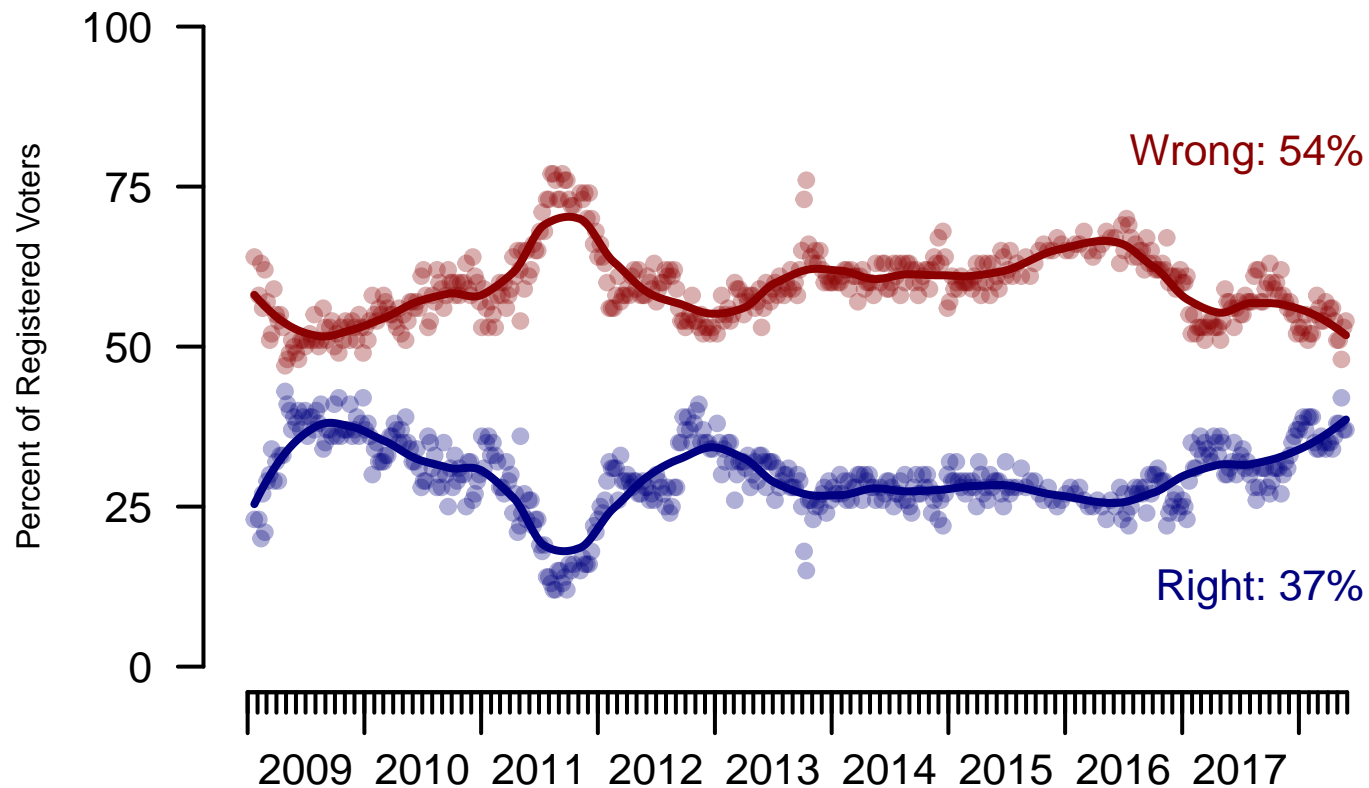


Figure 6: Direction of Country – Registered Voters

6. Direction of Country – This Week – All Adults

Would you say things in this country today are...

	Age (4 category)					Race			Census Region			
	Total	Under 30	30-44	45-64	65+	White	Black	Hispanic	North-east	Mid-west	South	West
Generally headed in the right direction	34%	29%	29%	33%	46%	37%	20%	28%	36%	30%	35%	33%
Off on the wrong track	52%	53%	55%	53%	48%	51%	58%	53%	54%	58%	50%	50%
Not sure	14%	18%	16%	14%	6%	11%	22%	20%	9%	12%	15%	17%
Totals (Unweighted N)	100% (1,500)	100% (203)	100% (465)	100% (523)	100% (309)	100% (1,148)	100% (184)	100% (168)	100% (298)	100% (302)	100% (547)	100% (353)

	Party ID			Ideology			Gender		Family Income (3 category)				
	Total	Dem	Ind	Rep	Lib	Mod	Con	Male	Female	Under 50	50-100	100+	Prefer not to say
Generally headed in the right direction	34%	13%	31%	69%	10%	28%	64%	40%	28%	29%	39%	44%	33%
Off on the wrong track	52%	78%	49%	23%	85%	52%	25%	48%	57%	55%	53%	52%	41%
Not sure	14%	9%	20%	8%	5%	21%	11%	12%	15%	16%	8%	4%	26%
Totals (Unweighted N)	100% (1,500)	100% (532)	100% (616)	100% (352)	100% (432)	100% (598)	100% (470)	100% (688)	100% (812)	100% (678)	100% (423)	100% (198)	100% (201)

The Economist/YouGov Poll
May 27 - 29, 2018



Sponsorship	<i>The Economist</i>
Fieldwork	YouGov
Interviewing Dates	May 27 - 29, 2018
Target population	U.S. citizens, aged 18 and over.
Sampling method	Respondents were selected from YouGov's opt-in Internet panel using sample matching. A random sample (stratified by age, gender, race, education, and region) was selected from the 2014 American Community Study. Voter registration was imputed from the November 2014 Current Population Survey Registration and Voting Supplement.
Weighting	The sample was weighted based on age, gender, race, education, and 2016 Presidential vote. The weights range from 0.2 to 6.5, with a mean of one and a standard deviation of 0.7.
Number of respondents	1500
Margin of error	± 3.1% (adjusted for weighting)
Margin of error (Registered Voters)	± 3.2% (adjusted for weighting)
Survey mode	Web-based interviews
Full results	Available online at http://today.yougov.com/news/categories/economist/ .