

Interviewing: December 30, 2015 - January 6, 2016  
Sample: 2000 Adults nationwide online  
1209 registered voters nationwide online



# *The Economist/YouGov* Poll

## Weekly Tracking

For immediate release

**1. Approval of Obama as President – Historical**

Do you approve or disapprove of the way Barack Obama is handling his job as President?

	All Adults						
	Total Approve	Total Disapprove	Strongly Approve	Somewhat Approve	Somewhat Disapprove	Strongly Disapprove	Not Sure
January 1-5, 2016	42%	52%	16%	26%	15%	37%	6%
December 18-22, 2015	43%	52%	18%	25%	14%	38%	4%
December 4-8, 2015	42%	53%	17%	25%	16%	37%	5%
November 21-23, 2015	45%	50%	19%	26%	13%	37%	5%
November 7-9, 2015	45%	48%	19%	26%	12%	36%	7%
October 24-26, 2015	43%	51%	19%	24%	15%	36%	7%
October 10-12, 2015	44%	48%	17%	27%	13%	35%	7%
September 26-28, 2015	47%	47%	21%	26%	12%	35%	6%
September 12-14, 2015	47%	47%	19%	28%	13%	34%	6%
August 29-31, 2015	46%	47%	21%	25%	12%	35%	7%
One Year Ago	42%	53%	18%	24%	16%	37%	5%

	Registered Voters						
	Total Approve	Total Disapprove	Strongly Approve	Somewhat Approve	Somewhat Disapprove	Strongly Disapprove	Not Sure
January 1-5, 2016	43%	54%	19%	24%	13%	41%	3%
December 18-22, 2015	42%	56%	20%	22%	12%	44%	2%
December 4-8, 2015	42%	56%	19%	23%	13%	43%	3%
November 21-23, 2015	44%	53%	21%	23%	10%	43%	2%
November 7-9, 2015	45%	53%	22%	23%	10%	43%	3%
October 24-26, 2015	42%	56%	20%	22%	13%	43%	2%
October 10-12, 2015	44%	53%	19%	25%	12%	41%	3%
September 26-28, 2015	45%	52%	22%	23%	10%	42%	3%
September 12-14, 2015	47%	50%	21%	26%	11%	39%	3%
August 29-31, 2015	44%	53%	22%	22%	12%	41%	3%
One Year Ago	44%	54%	20%	24%	13%	41%	3%

## Obama Approval

"Do you approve or disapprove of the way Barack Obama is handling his job as President?"

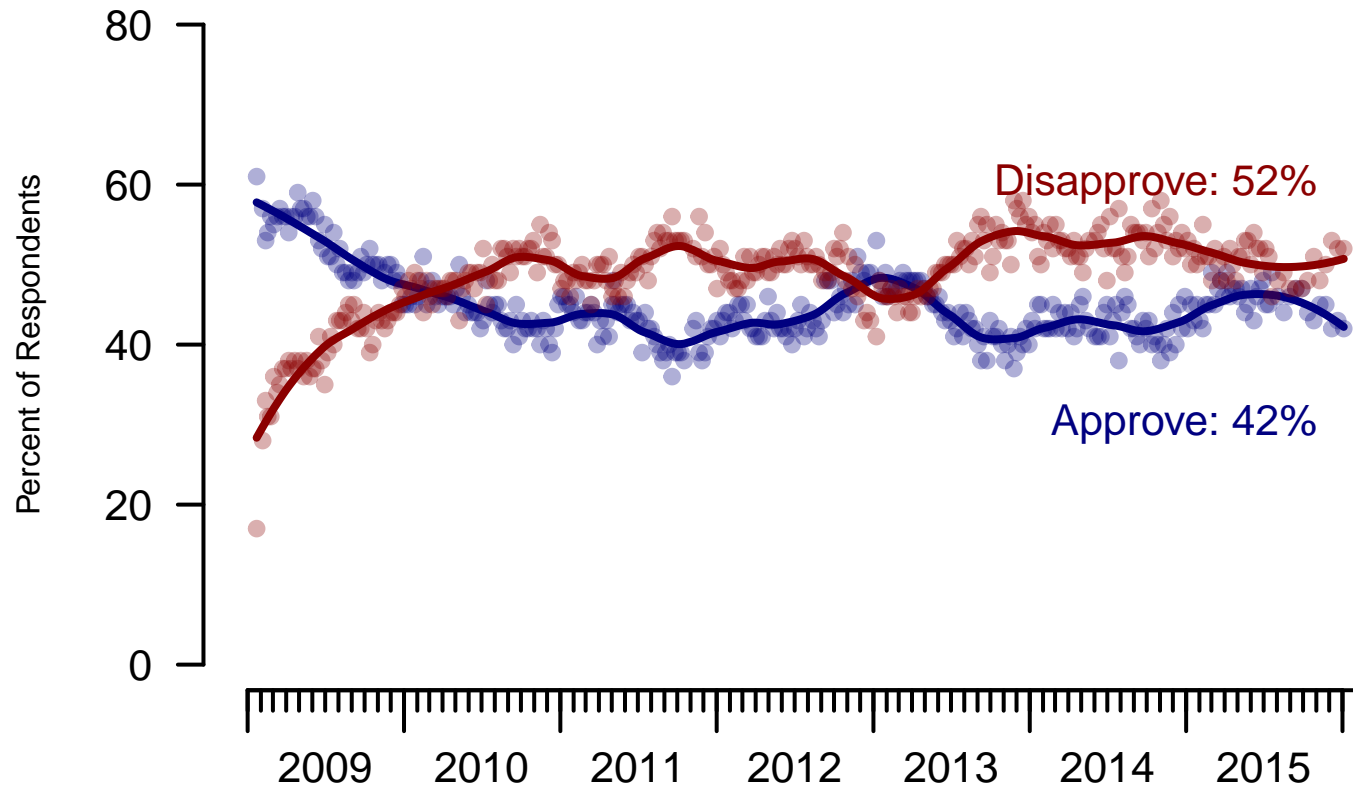


Figure 1: Obama Approval – All Adults

## Obama Approval

"Do you approve or disapprove of the way Barack Obama is handling his job as President?"

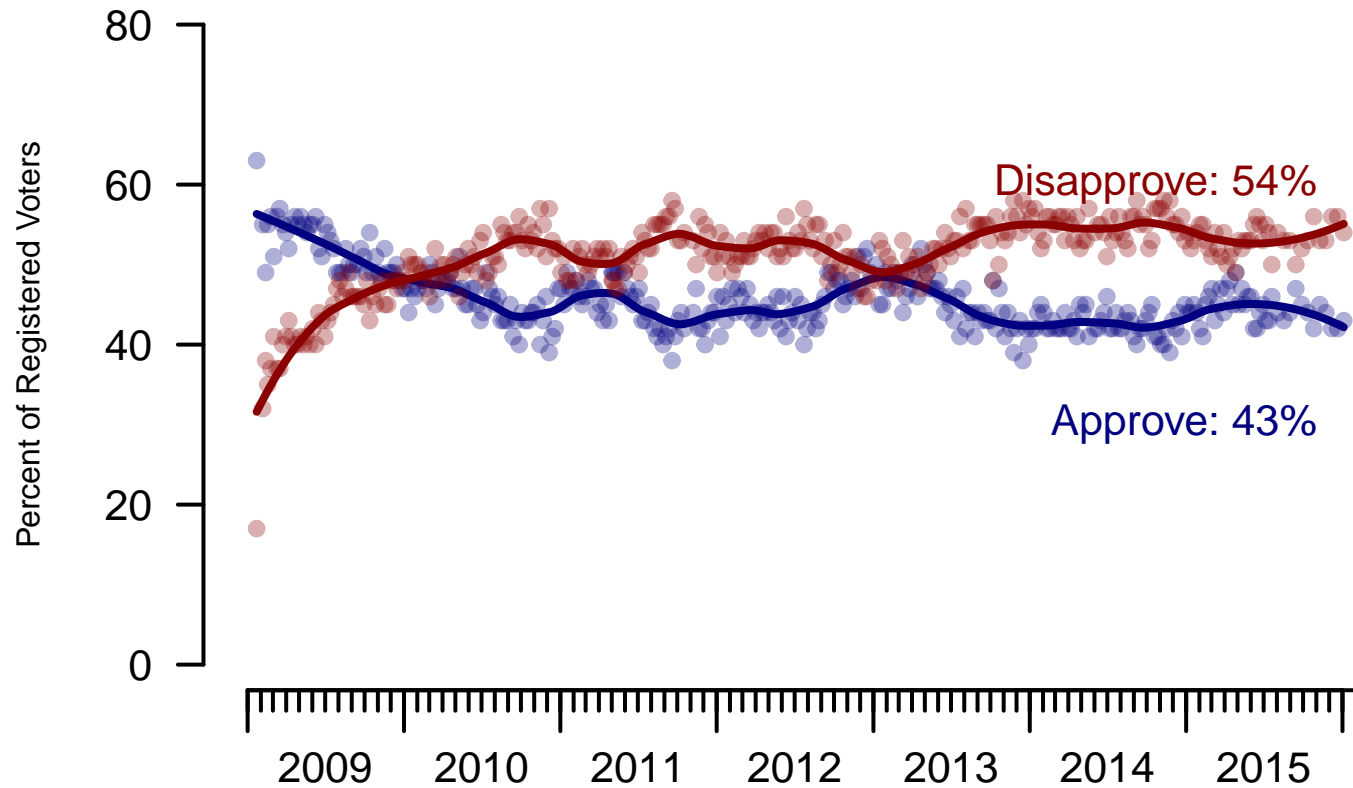


Figure 2: Obama Approval – Registered Voters

**2. Approval of Obama as President – This Week – All Adults**

Do you approve or disapprove of the way Barack Obama is handling his job as President?

	Age (4 category)					Race			Census Region			
	Total	Under 30	30-44	45-64	65+	White	Black	Hispanic	North-east	Mid-west	South	West
Strongly Approve	16%	16%	16%	16%	16%	11%	41%	23%	9%	19%	17%	18%
Somewhat Approve	26%	33%	25%	25%	20%	23%	35%	35%	23%	22%	28%	29%
Somewhat Disapprove	15%	19%	17%	12%	10%	16%	6%	15%	20%	19%	10%	14%
Strongly Disapprove	37%	23%	35%	43%	48%	46%	11%	14%	42%	37%	39%	32%
Not Sure	6%	10%	7%	3%	5%	4%	7%	14%	6%	4%	6%	7%
Totals (Unweighted N)	100% (2,000)	100% (386)	100% (553)	100% (786)	100% (275)	100% (1,483)	100% (240)	100% (277)	100% (374)	100% (443)	100% (767)	100% (416)

	Party ID			Ideology			Gender		Family Income (3 category)			Prefer not to say	
	Total	Dem	Ind	Rep	Lib	Mod	Con	Male	Female	Under 50	50-100		100+
Strongly Approve	16%	38%	9%	1%	36%	14%	7%	17%	15%	17%	13%	18%	17%
Somewhat Approve	26%	41%	25%	8%	41%	29%	13%	24%	27%	27%	23%	27%	23%
Somewhat Disapprove	15%	11%	16%	16%	11%	19%	11%	14%	15%	16%	17%	9%	11%
Strongly Disapprove	37%	7%	39%	73%	8%	29%	65%	38%	36%	34%	45%	42%	32%
Not Sure	6%	2%	11%	2%	4%	8%	4%	6%	6%	6%	2%	4%	17%
Totals (Unweighted N)	100% (2,000)	100% (719)	100% (801)	100% (480)	100% (493)	100% (897)	100% (610)	100% (915)	100% (1,085)	100% (1,028)	100% (530)	100% (249)	100% (193)

**3. Approval of U.S. Congress – Historical**

Overall, do you approve or disapprove of the way that the United States Congress is handling its job?

	All Adults							
	Total Approve	Total Disapprove	Strongly Approve	Somewhat Approve	Neutral	Somewhat Disapprove	Strongly Disapprove	Not Sure
January 1-5, 2016	12%	56%	2%	10%	21%	22%	34%	12%
December 18-22, 2015	13%	59%	2%	11%	18%	23%	36%	10%
December 4-8, 2015	13%	55%	3%	10%	20%	22%	33%	12%
November 21-23, 2015	13%	56%	3%	10%	20%	24%	32%	11%
November 7-9, 2015	11%	58%	3%	8%	17%	22%	36%	14%
October 24-26, 2015	12%	59%	3%	9%	16%	22%	37%	13%
October 10-12, 2015	9%	59%	2%	7%	18%	22%	37%	14%
September 26-28, 2015	12%	58%	3%	9%	17%	24%	34%	13%
September 12-14, 2015	11%	60%	3%	8%	18%	23%	37%	12%
August 29-31, 2015	13%	58%	3%	10%	17%	22%	36%	12%
One Year Ago	9%	64%	3%	6%	19%	26%	38%	8%

	Registered Voters							
	Total Approve	Total Disapprove	Strongly Approve	Somewhat Approve	Neutral	Somewhat Disapprove	Strongly Disapprove	Not Sure
January 1-5, 2016	10%	67%	2%	8%	17%	26%	41%	6%
December 18-22, 2015	10%	70%	2%	8%	14%	26%	44%	6%
December 4-8, 2015	10%	67%	2%	8%	18%	26%	41%	6%
November 21-23, 2015	13%	65%	2%	11%	17%	27%	38%	5%
November 7-9, 2015	10%	69%	3%	7%	15%	25%	44%	6%
October 24-26, 2015	11%	68%	3%	8%	16%	24%	44%	5%
October 10-12, 2015	9%	69%	2%	7%	15%	23%	46%	7%
September 26-28, 2015	11%	67%	3%	8%	16%	26%	41%	7%
September 12-14, 2015	11%	66%	3%	8%	16%	24%	42%	7%
August 29-31, 2015	11%	65%	3%	8%	17%	24%	41%	8%
One Year Ago	8%	72%	2%	6%	16%	25%	47%	5%

### Congress Approval

"Do you approve of the way the U.S. Congress is handling its job?"

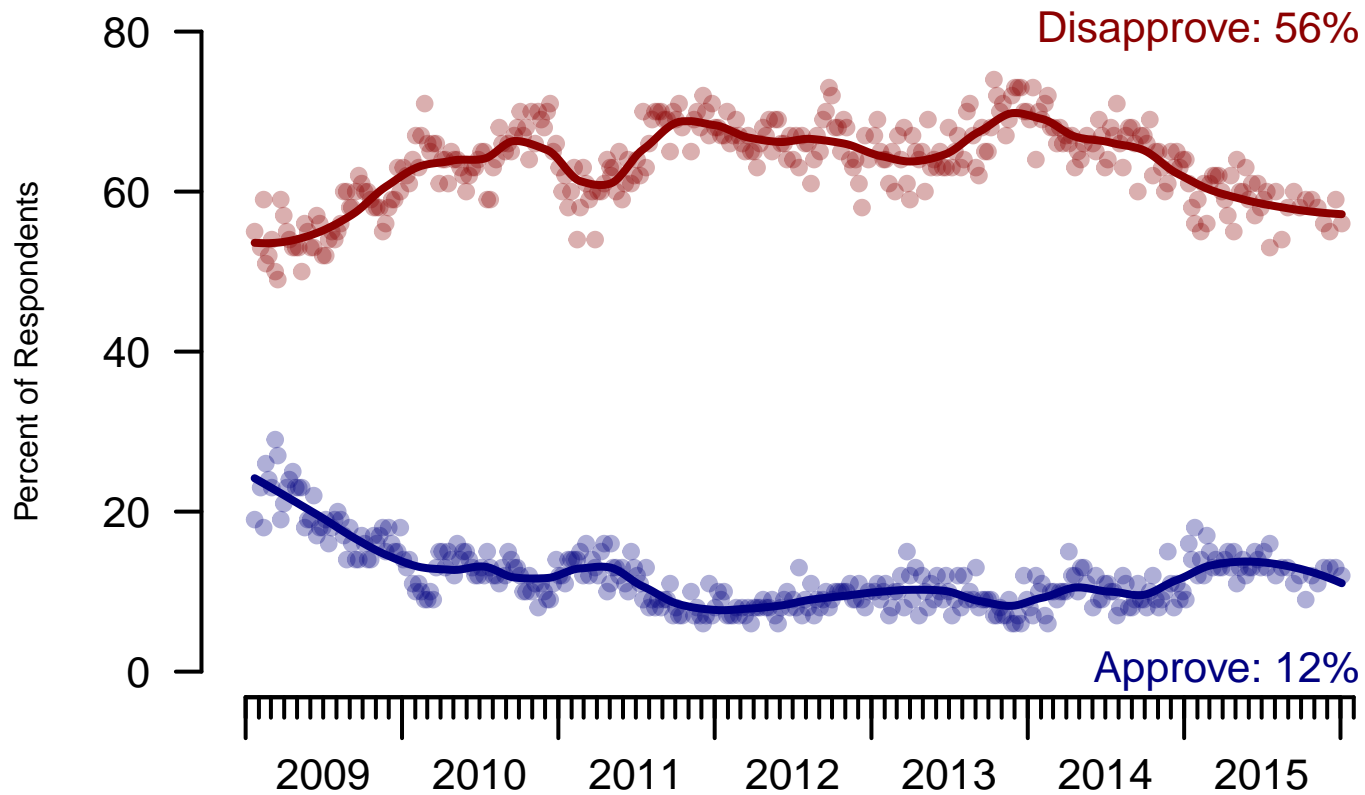


Figure 3: Congress Approval – All Adults

## Congress Approval

"Do you approve of the way the U.S. Congress is handling its job?"

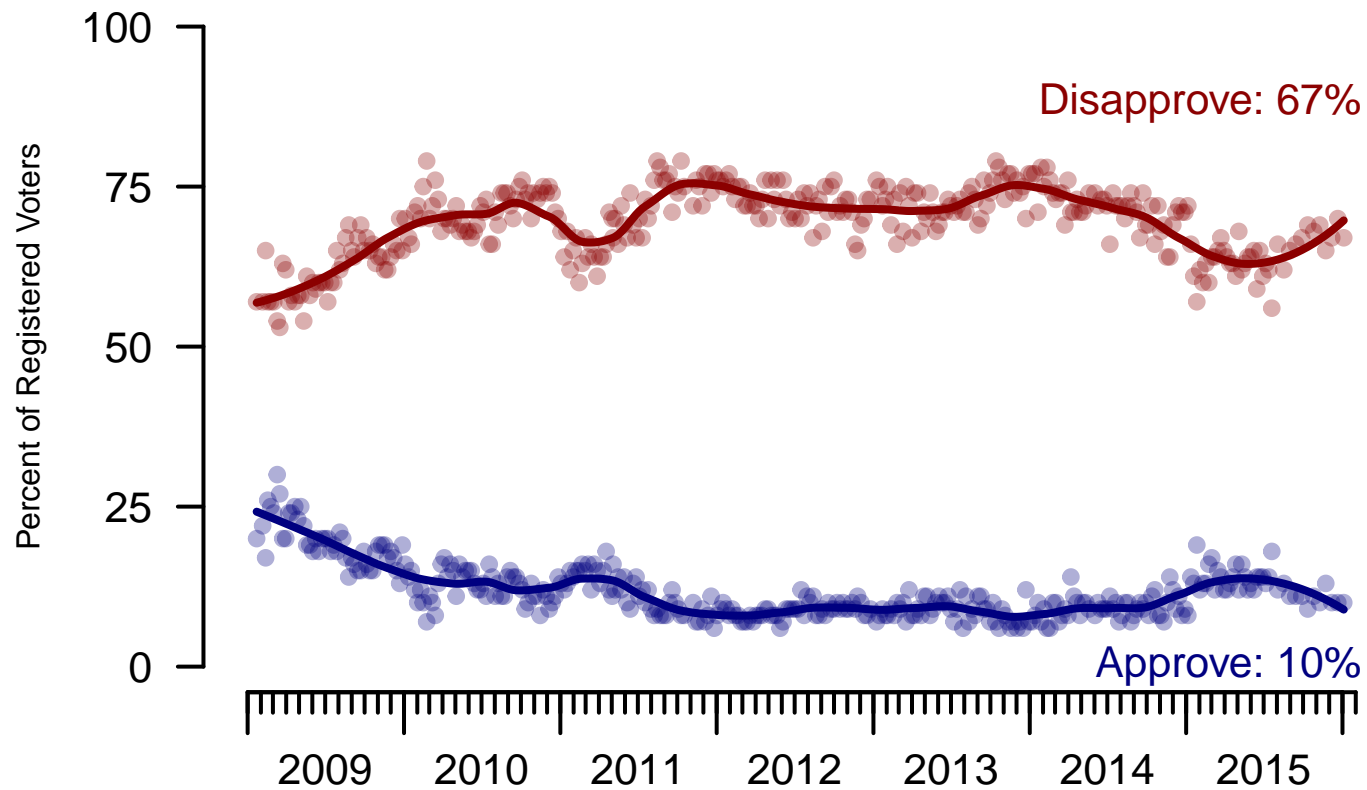


Figure 4: Congress Approval – Registered Voters



**4. Approval of U.S. Congress – This Week – All Adults**

Overall, do you approve or disapprove of the way that the United States Congress is handling its job?

	Age (4 category)					Race			Census Region			
	Total	Under 30	30-44	45-64	65+	White	Black	Hispanic	North-east	Mid-west	South	West
Strongly approve	2%	4%	2%	1%	0%	1%	7%	3%	2%	1%	2%	3%
Somewhat approve	10%	12%	11%	11%	5%	8%	21%	11%	10%	9%	12%	9%
Neither approve nor disapprove	21%	18%	26%	19%	20%	18%	20%	35%	19%	20%	21%	21%
Somewhat disapprove	22%	20%	21%	22%	25%	24%	16%	18%	21%	28%	20%	20%
Strongly disapprove	34%	22%	27%	40%	44%	39%	24%	15%	33%	30%	35%	35%
Not sure	12%	24%	12%	7%	6%	11%	12%	18%	14%	12%	10%	12%
Totals (Unweighted N)	100% (1,965)	100% (372)	100% (539)	100% (781)	100% (273)	100% (1,462)	100% (235)	100% (268)	100% (367)	100% (439)	100% (750)	100% (409)

	Party ID			Ideology			Gender		Family Income (3 category)			Prefer not to say	
	Total	Dem	Ind	Rep	Lib	Mod	Con	Male	Female	Under 50	50-100		100+
Strongly approve	2%	4%	1%	2%	2%	2%	2%	2%	2%	3%	1%	1%	0%
Somewhat approve	10%	11%	8%	12%	8%	9%	13%	10%	10%	11%	8%	9%	11%
Neither approve nor disapprove	21%	21%	19%	22%	13%	25%	20%	18%	23%	21%	20%	14%	24%
Somewhat disapprove	22%	18%	20%	30%	21%	18%	27%	23%	21%	23%	26%	17%	12%
Strongly disapprove	34%	37%	35%	26%	47%	31%	29%	38%	30%	29%	36%	53%	30%
Not sure	12%	8%	16%	8%	9%	15%	9%	9%	14%	12%	8%	7%	23%
Totals (Unweighted N)	100% (1,965)	100% (703)	100% (790)	100% (472)	100% (486)	100% (875)	100% (604)	100% (908)	100% (1,057)	100% (1,008)	100% (522)	100% (246)	100% (189)

**5. Direction of country – Historical**

Would you say things in this country today are...

	All Adults		
	Right Direction	Wrong Track	Not Sure
January 1-5, 2016	26%	63%	11%
December 18-22, 2015	24%	64%	12%
December 4-8, 2015	24%	64%	12%
November 21-23, 2015	24%	64%	12%
November 7-9, 2015	26%	63%	11%
October 24-26, 2015	27%	62%	11%
October 10-12, 2015	27%	60%	13%
September 26-28, 2015	29%	59%	12%
September 12-14, 2015	29%	57%	14%
August 29-31, 2015	29%	60%	11%
One Year Ago	32%	55%	13%

	Registered Voters		
	Right Direction	Wrong Track	Not Sure
January 1-5, 2016	27%	65%	8%
December 18-22, 2015	26%	66%	9%
December 4-8, 2015	25%	67%	8%
November 21-23, 2015	26%	65%	9%
November 7-9, 2015	28%	65%	7%
October 24-26, 2015	26%	66%	8%
October 10-12, 2015	27%	65%	9%
September 26-28, 2015	29%	63%	8%
September 12-14, 2015	29%	61%	10%
August 29-31, 2015	28%	64%	7%
One Year Ago	32%	57%	12%

## Direction of Country

"Would you say things in this country today are generally headed in the right direction or off on the wrong track?"

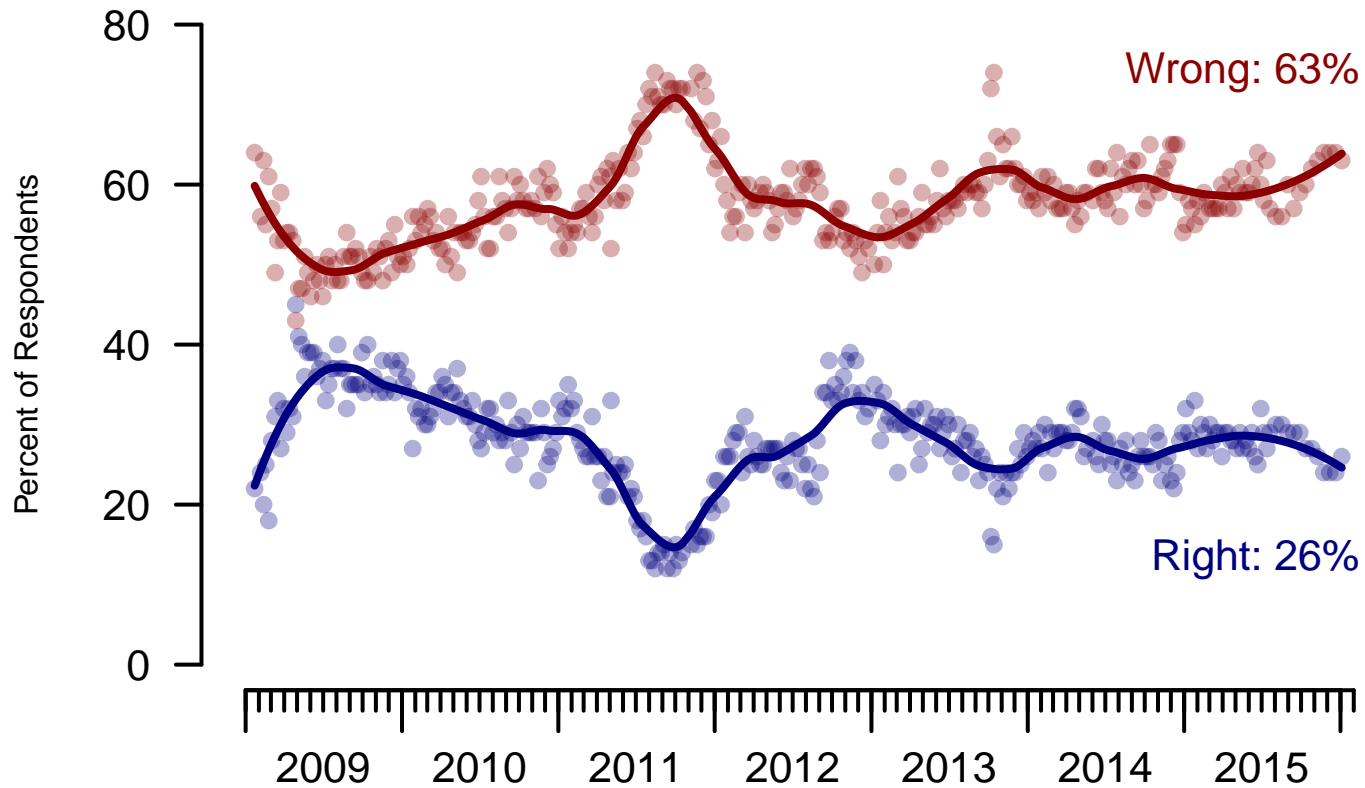


Figure 5: Direction of Country – All Adults

## Direction of Country

"Would you say things in this country today are generally headed in the right direction or off on the wrong track?"

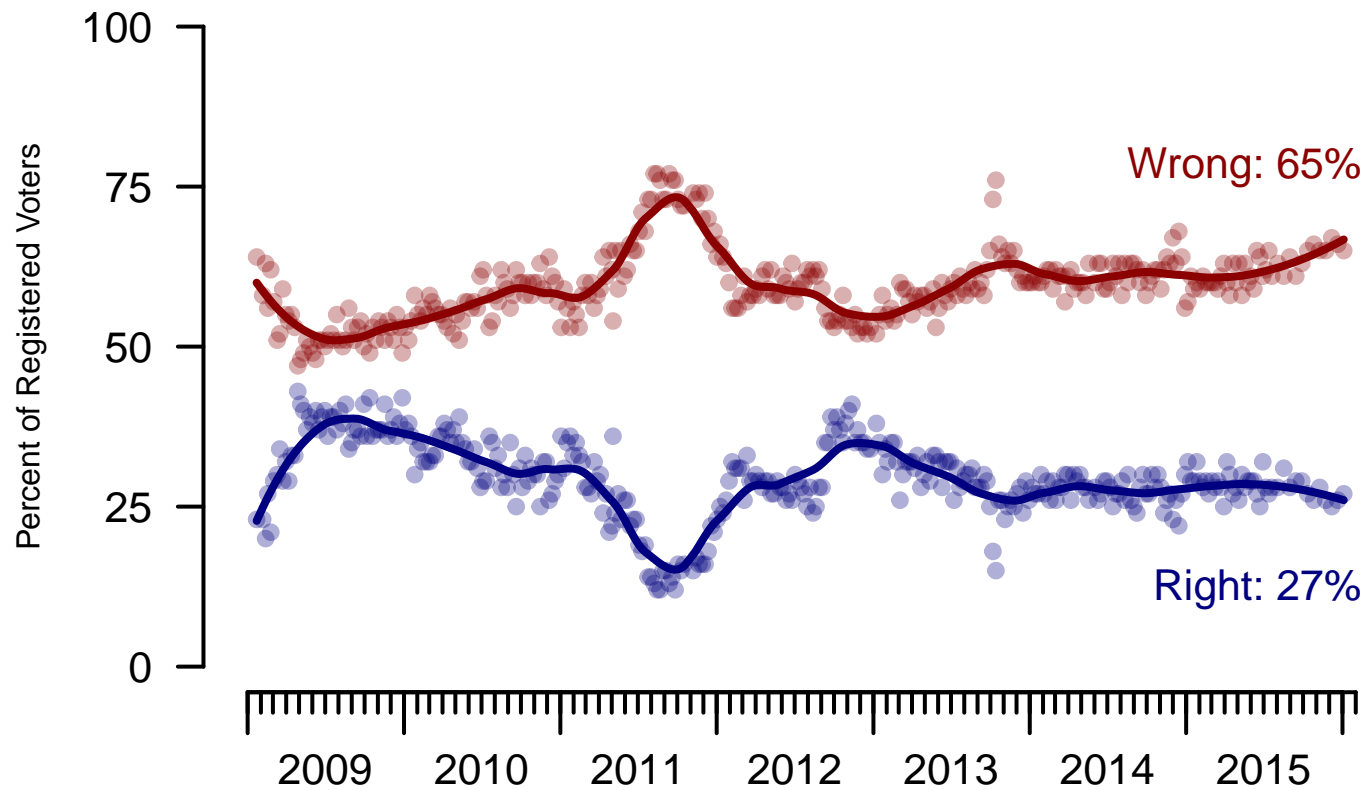


Figure 6: Direction of Country – Registered Voters

**6. Direction of Country – This Week – All Adults**

Would you say things in this country today are...

	Age (4 category)					Race			Census Region			
	Total	Under 30	30-44	45-64	65+	White	Black	Hispanic	North-east	Mid-west	South	West
Generally headed in the right direction	26%	25%	28%	27%	24%	22%	43%	38%	17%	25%	30%	28%
Off on the wrong track	63%	59%	60%	66%	65%	70%	43%	42%	71%	65%	59%	61%
Not sure	11%	16%	12%	7%	10%	9%	14%	19%	12%	10%	11%	11%
Totals (Unweighted N)	100% (2,000)	100% (386)	100% (553)	100% (786)	100% (275)	100% (1,483)	100% (240)	100% (277)	100% (374)	100% (443)	100% (767)	100% (416)

	Party ID			Ideology			Gender		Family Income (3 category)				
	Total	Dem	Ind	Rep	Lib	Mod	Con	Male	Female	Under 50	50-100	100+	Prefer not to say
Generally headed in the right direction	26%	49%	21%	7%	49%	26%	13%	30%	23%	27%	26%	28%	21%
Off on the wrong track	63%	39%	66%	88%	41%	59%	80%	59%	66%	62%	66%	63%	57%
Not sure	11%	12%	14%	5%	10%	15%	7%	11%	11%	11%	8%	8%	22%
Totals (Unweighted N)	100% (2,000)	100% (719)	100% (801)	100% (480)	100% (493)	100% (897)	100% (610)	100% (915)	100% (1,085)	100% (1,028)	100% (530)	100% (249)	100% (193)

**The Economist/YouGov Poll**  
December 30, 2015 - January 6, 2016



<b>Sponsorship</b>	<i>The Economist</i>
<b>Fieldwork</b>	YouGov
<b>Interviewing Dates</b>	December 30, 2015 - January 6, 2016
<b>Target population</b>	U.S. citizens, aged 18 and over.
<b>Sampling method</b>	Respondents were selected from YouGov's opt-in Internet panel using sample matching. A random sample (stratified by age, gender, race, education, and region) was selected from the 2010 American Community Study. Voter registration was imputed from the November 2010 Current Population Survey Registration and Voting Supplement. Religion, political interest, minor party identification, and non-placement on an ideology scale, were imputed from the 2008 Pew Religion in American Life Survey.
<b>Weighting</b>	The sample was weighted using propensity scores based on age, gender, race, education, news interest, voter registration, and non-placement on an ideology scale. The weights range from 0.11 to 4.08, with a mean of one and a standard deviation of 0.8.
<b>Number of respondents</b>	2000
<b>Margin of error</b>	± 2.8% (adjusted for weighting)
<b>Margin of error (Registered Voters)</b>	± 3.1% (adjusted for weighting)
<b>Survey mode</b>	Web-based interviews
<b>Full results</b>	Available online at <a href="http://today.yougov.com/news/categories/economist/">http://today.yougov.com/news/categories/economist/</a> .