

Interviewing: September 18 - 19, 2016  
Sample: 1300 Adults nationwide online  
936 registered voters nationwide online



# *The Economist/YouGov* Poll

## Weekly Tracking

For immediate release

**1. Approval of Obama as President – Historical**

Do you approve or disapprove of the way Barack Obama is handling his job as President?

	All Adults						
	Total Approve	Total Disapprove	Strongly Approve	Somewhat Approve	Somewhat Disapprove	Strongly Disapprove	Not Sure
September 16-20, 2016	46%	49%	25%	21%	16%	33%	5%
September 9-13, 2016	48%	47%	25%	23%	13%	34%	5%
September 2-6, 2016	52%	46%	27%	25%	13%	33%	3%
August 27-29, 2016	50%	44%	24%	26%	12%	32%	5%
August 20-22, 2016	52%	45%	25%	27%	11%	34%	3%
August 13-15, 2016	53%	46%	27%	26%	12%	34%	2%
August 6-8, 2016	50%	47%	26%	24%	14%	33%	3%
July 30-August 1, 2016	50%	44%	25%	25%	12%	32%	6%
July 23-25, 2016	47%	48%	22%	25%	14%	34%	4%
July 16-18, 2016	47%	46%	18%	29%	14%	32%	8%
One Year Ago	47%	47%	19%	28%	13%	34%	6%

	Registered Voters						
	Total Approve	Total Disapprove	Strongly Approve	Somewhat Approve	Somewhat Disapprove	Strongly Disapprove	Not Sure
September 16-20, 2016	47%	51%	26%	21%	13%	38%	2%
September 9-13, 2016	48%	50%	25%	23%	11%	39%	2%
September 2-6, 2016	50%	48%	26%	24%	10%	38%	2%
August 27-29, 2016	48%	49%	26%	22%	11%	38%	2%
August 20-22, 2016	47%	52%	27%	20%	11%	41%	1%
August 13-15, 2016	49%	50%	26%	23%	12%	38%	2%
August 6-8, 2016	49%	49%	27%	22%	11%	38%	2%
July 30-August 1, 2016	48%	49%	26%	22%	12%	37%	3%
July 23-25, 2016	48%	49%	23%	25%	12%	37%	2%
July 16-18, 2016	45%	49%	20%	25%	12%	37%	6%
One Year Ago	47%	50%	21%	26%	11%	39%	3%

## Obama Approval

"Do you approve or disapprove of the way Barack Obama is handling his job as President?"

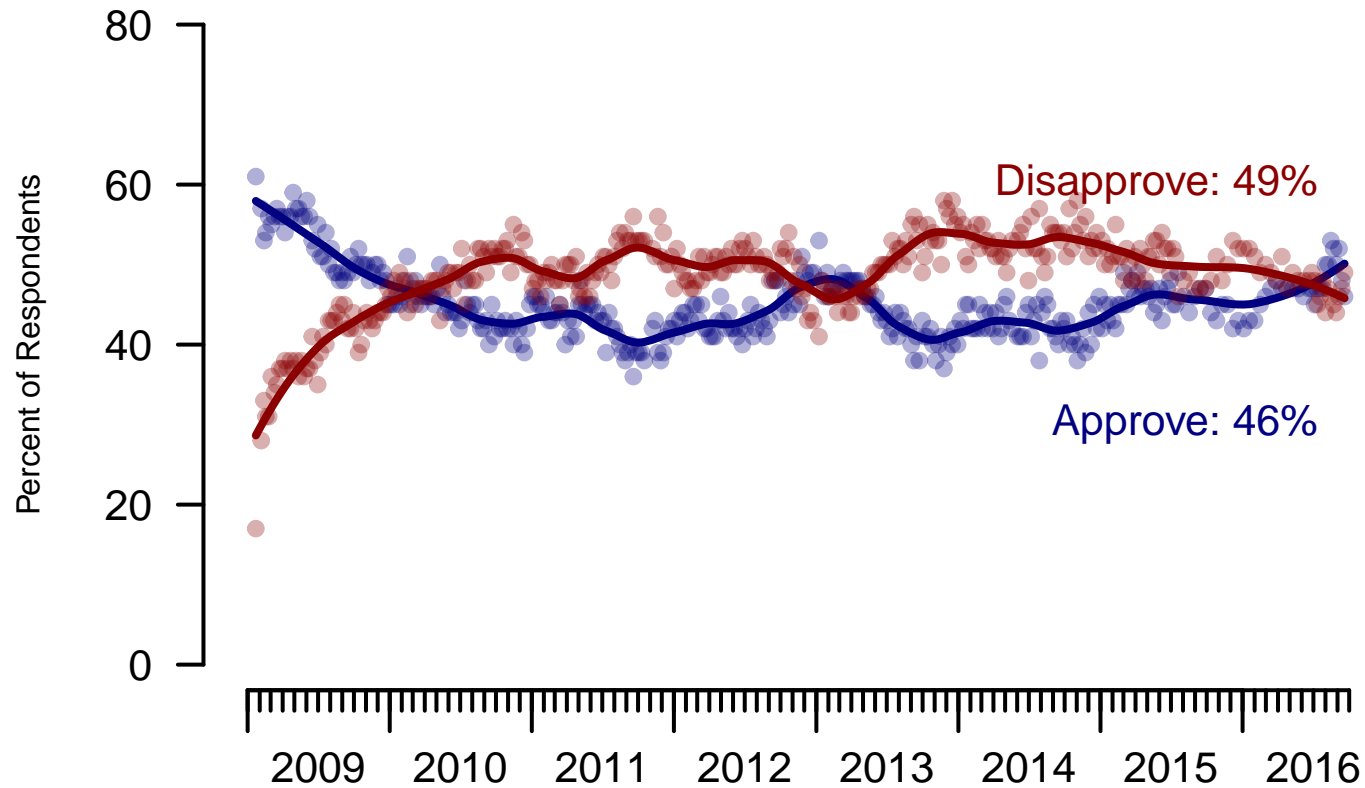


Figure 1: Obama Approval – All Adults

## Obama Approval

"Do you approve or disapprove of the way Barack Obama is handling his job as President?"

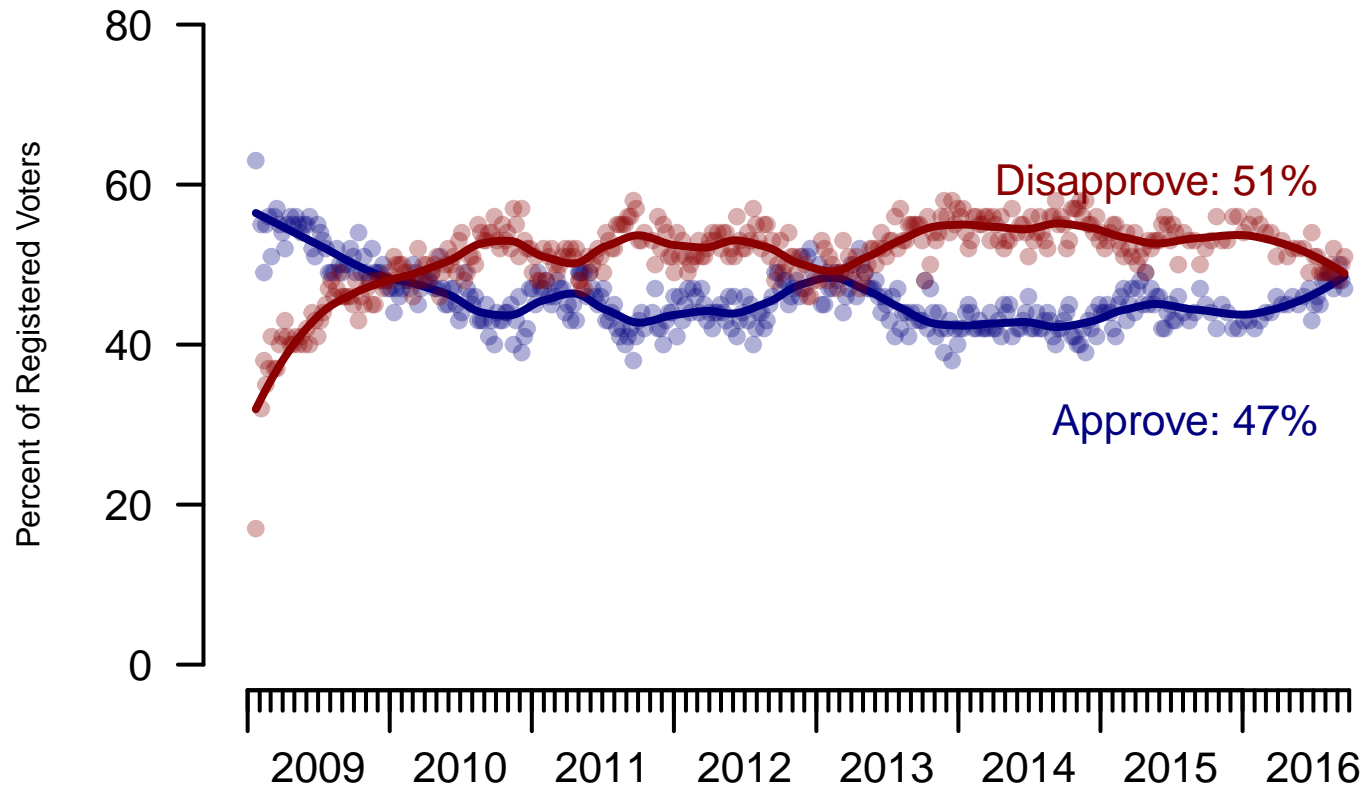


Figure 2: Obama Approval – Registered Voters

**2. Approval of Obama as President – This Week – All Adults**

Do you approve or disapprove of the way Barack Obama is handling his job as President?

	Age (4 category)					Race			Census Region			
	Total	Under 30	30-44	45-64	65+	White	Black	Hispanic	North-east	Mid-west	South	West
Strongly Approve	25%	28%	24%	23%	28%	18%	59%	40%	23%	30%	24%	25%
Somewhat Approve	21%	28%	28%	17%	15%	21%	21%	23%	24%	16%	22%	22%
Somewhat Disapprove	16%	17%	17%	16%	13%	18%	9%	10%	19%	19%	13%	14%
Strongly Disapprove	33%	19%	26%	41%	41%	39%	5%	19%	25%	33%	36%	35%
Not Sure	5%	8%	5%	3%	3%	4%	6%	8%	8%	3%	4%	4%
Totals (Unweighted N)	100% (1,300)	100% (240)	100% (348)	100% (529)	100% (183)	100% (1,012)	100% (153)	100% (135)	100% (240)	100% (296)	100% (482)	100% (282)

	Party ID			Ideology			Gender		Family Income (3 category)			Prefer not to say	
	Total	Dem	Ind	Rep	Lib	Mod	Con	Male	Female	Under 50	50-100		100+
Strongly Approve	25%	52%	16%	5%	39%	28%	13%	22%	29%	24%	22%	33%	30%
Somewhat Approve	21%	28%	23%	8%	32%	27%	7%	21%	21%	21%	20%	24%	19%
Somewhat Disapprove	16%	11%	17%	19%	16%	14%	18%	16%	16%	17%	18%	9%	14%
Strongly Disapprove	33%	6%	35%	66%	9%	24%	59%	38%	29%	32%	36%	33%	32%
Not Sure	5%	2%	8%	2%	4%	7%	2%	4%	6%	6%	4%	0%	5%
Totals (Unweighted N)	100% (1,300)	100% (506)	100% (489)	100% (305)	100% (376)	100% (565)	100% (359)	100% (615)	100% (685)	100% (664)	100% (341)	100% (154)	100% (141)

**3. Approval of U.S. Congress – Historical**

Overall, do you approve or disapprove of the way that the United States Congress is handling its job?

All Adults

	<b>Total Approve</b>	<b>Total Disapprove</b>	Strongly Approve	Somewhat Approve	Neutral	Somewhat Disapprove	Strongly Disapprove	Not Sure
September 16-20, 2016	10%	63%	3%	7%	18%	24%	39%	9%
September 9-13, 2016	13%	61%	4%	9%	16%	23%	38%	9%
September 2-6, 2016	10%	63%	3%	7%	18%	22%	41%	9%
August 27-29, 2016	10%	63%	3%	7%	17%	25%	38%	10%
August 20-22, 2016	12%	59%	3%	9%	20%	22%	37%	9%
August 13-15, 2016	9%	65%	2%	7%	17%	25%	40%	9%
August 6-8, 2016	13%	62%	3%	10%	18%	26%	36%	7%
July 30-August 1, 2016	10%	65%	2%	8%	17%	27%	38%	8%
July 23-25, 2016	11%	58%	3%	8%	17%	21%	37%	14%
July 16-18, 2016	11%	62%	2%	9%	17%	25%	37%	11%
One Year Ago	11%	60%	3%	8%	18%	23%	37%	12%

Registered Voters

	<b>Total Approve</b>	<b>Total Disapprove</b>	Strongly Approve	Somewhat Approve	Neutral	Somewhat Disapprove	Strongly Disapprove	Not Sure
September 16-20, 2016	11%	70%	3%	8%	15%	25%	45%	4%
September 9-13, 2016	10%	71%	2%	8%	14%	26%	45%	6%
September 2-6, 2016	10%	67%	3%	7%	16%	22%	45%	7%
August 27-29, 2016	10%	69%	3%	7%	13%	26%	43%	6%
August 20-22, 2016	11%	68%	3%	8%	15%	26%	42%	6%
August 13-15, 2016	10%	70%	2%	8%	13%	24%	46%	8%
August 6-8, 2016	11%	68%	2%	9%	15%	27%	41%	5%
July 30-August 1, 2016	10%	71%	2%	8%	15%	28%	43%	4%
July 23-25, 2016	10%	65%	3%	7%	16%	23%	42%	9%
July 16-18, 2016	10%	68%	1%	9%	14%	28%	40%	7%
One Year Ago	11%	66%	3%	8%	16%	24%	42%	7%

### Congress Approval

"Do you approve of the way the  
U.S. Congress is handling its job?"

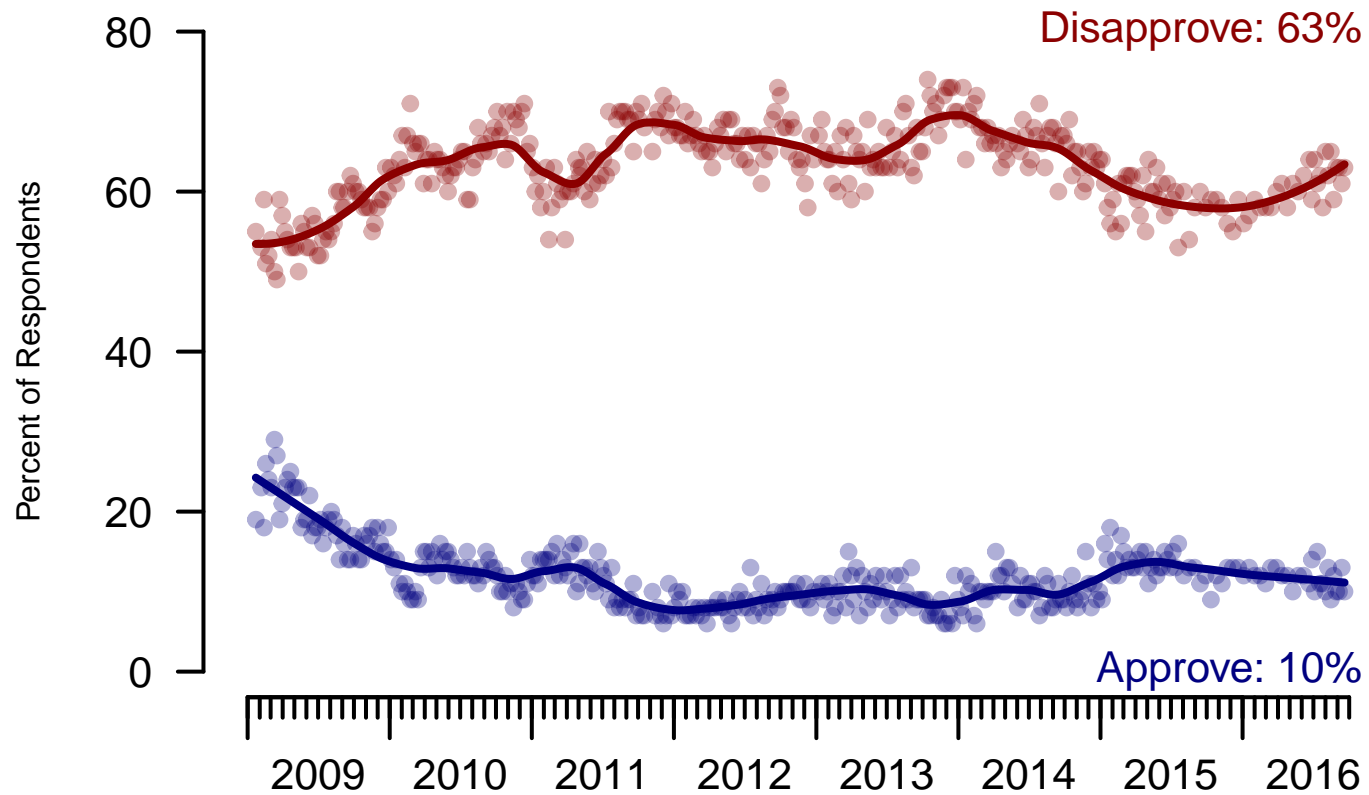


Figure 3: Congress Approval – All Adults

### Congress Approval

"Do you approve of the way the U.S. Congress is handling its job?"

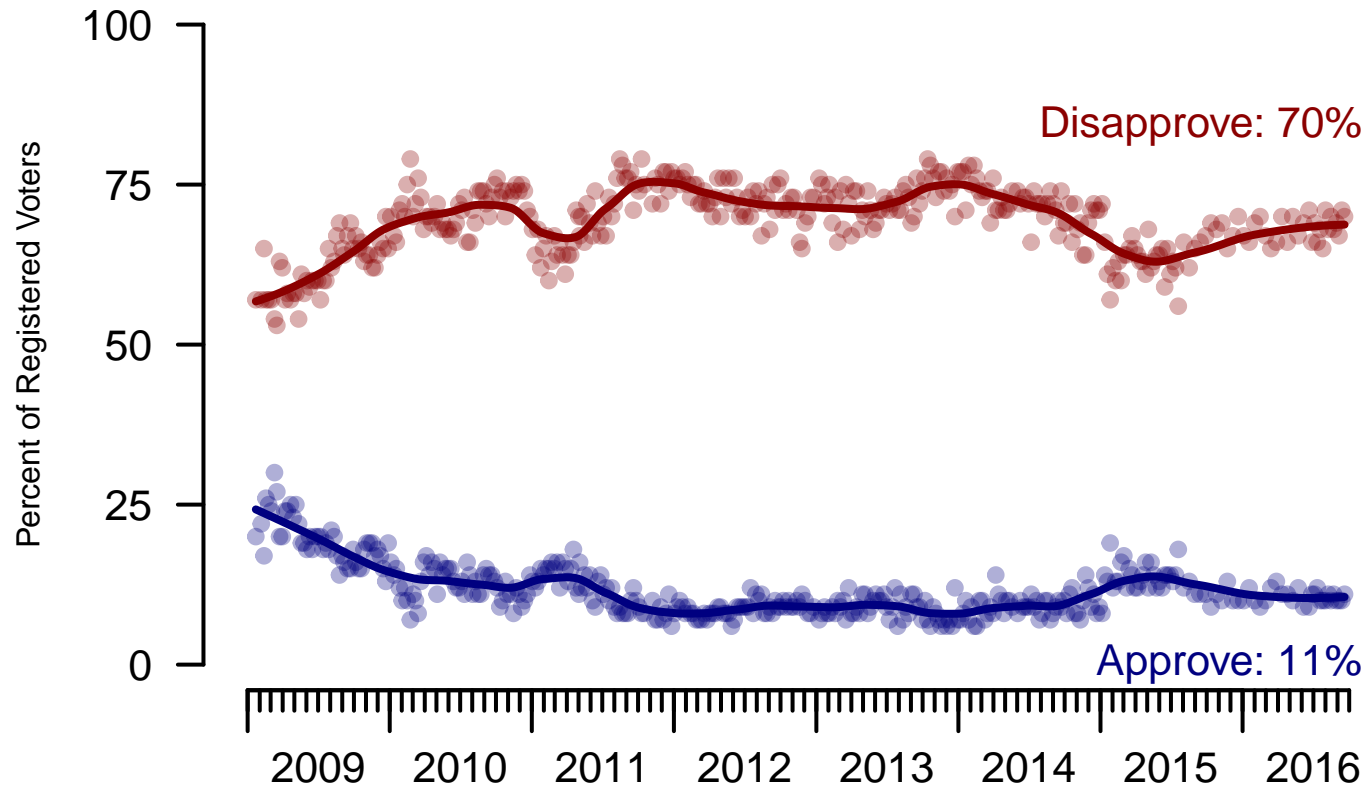


Figure 4: Congress Approval – Registered Voters



**4. Approval of U.S. Congress – This Week – All Adults**

Overall, do you approve or disapprove of the way that the United States Congress is handling its job?

	Age (4 category)					Race			Census Region			
	Total	Under 30	30-44	45-64	65+	White	Black	Hispanic	North-east	Mid-west	South	West
Strongly approve	3%	7%	4%	2%	—	2%	13%	3%	2%	3%	2%	6%
Somewhat approve	7%	9%	8%	9%	3%	6%	11%	15%	8%	6%	7%	9%
Neither approve nor disapprove	18%	22%	23%	15%	12%	18%	18%	19%	21%	16%	18%	15%
Somewhat disapprove	24%	23%	23%	23%	26%	25%	19%	20%	18%	25%	28%	21%
Strongly disapprove	39%	25%	29%	44%	56%	42%	26%	33%	34%	43%	37%	44%
Not sure	9%	13%	12%	7%	3%	8%	14%	10%	17%	6%	7%	5%
Totals (Unweighted N)	100% (1,279)	100% (235)	100% (341)	100% (521)	100% (182)	100% (1,001)	100% (148)	100% (130)	100% (236)	100% (291)	100% (474)	100% (278)

	Party ID			Ideology			Gender		Family Income (3 category)			Prefer not to say	
	Total	Dem	Ind	Rep	Lib	Mod	Con	Male	Female	Under 50	50-100		100+
Strongly approve	3%	6%	3%	1%	2%	3%	4%	5%	1%	5%	1%	2%	1%
Somewhat approve	7%	12%	4%	8%	7%	8%	7%	5%	9%	8%	10%	5%	2%
Neither approve nor disapprove	18%	15%	17%	22%	14%	18%	20%	17%	18%	22%	15%	11%	10%
Somewhat disapprove	24%	19%	24%	29%	18%	21%	31%	23%	24%	23%	23%	24%	29%
Strongly disapprove	39%	40%	42%	33%	47%	41%	32%	44%	35%	33%	42%	56%	44%
Not sure	9%	8%	10%	7%	12%	9%	6%	5%	12%	9%	8%	3%	13%
Totals (Unweighted N)	100% (1,279)	100% (500)	100% (478)	100% (301)	100% (371)	100% (556)	100% (352)	100% (604)	100% (675)	100% (654)	100% (336)	100% (154)	100% (135)

**5. Direction of country – Historical**

Would you say things in this country today are...

	All Adults		
	Right Direction	Wrong Track	Not Sure
September 16-20, 2016	29%	61%	10%
September 9-13, 2016	25%	66%	9%
September 2-6, 2016	27%	62%	11%
August 27-29, 2016	25%	65%	10%
August 20-22, 2016	29%	61%	11%
August 13-15, 2016	26%	65%	9%
August 6-8, 2016	29%	63%	8%
July 30-August 1, 2016	29%	61%	10%
July 23-25, 2016	24%	67%	9%
July 16-18, 2016	23%	65%	12%
One Year Ago	29%	57%	14%

	Registered Voters		
	Right Direction	Wrong Track	Not Sure
September 16-20, 2016	30%	63%	7%
September 9-13, 2016	24%	67%	9%
September 2-6, 2016	28%	62%	10%
August 27-29, 2016	27%	65%	8%
August 20-22, 2016	28%	65%	8%
August 13-15, 2016	27%	64%	9%
August 6-8, 2016	28%	66%	6%
July 30-August 1, 2016	27%	64%	9%
July 23-25, 2016	25%	67%	8%
July 16-18, 2016	22%	69%	8%
One Year Ago	29%	61%	10%

## Direction of Country

"Would you say things in this country today are generally headed in the right direction or off on the wrong track?"

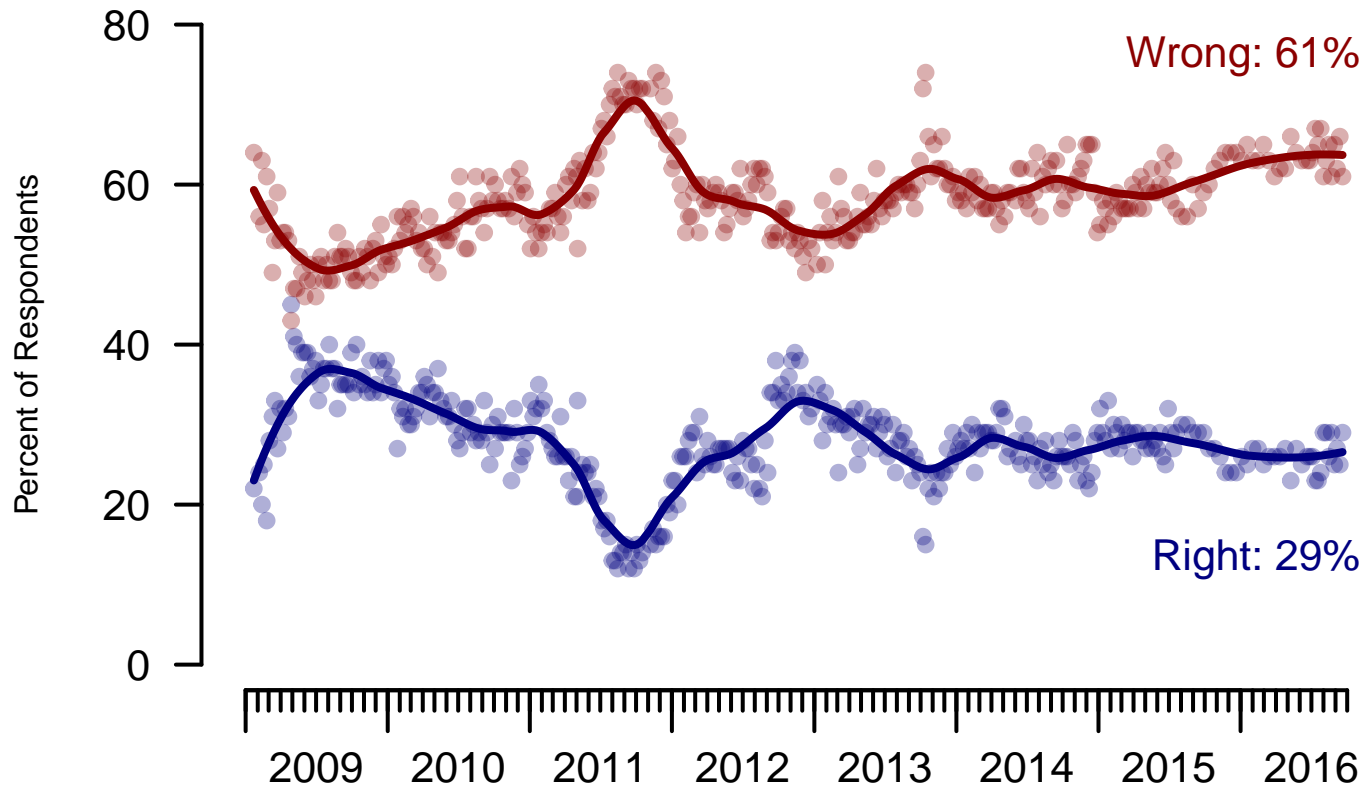


Figure 5: Direction of Country – All Adults

## Direction of Country

"Would you say things in this country today are generally headed in the right direction or off on the wrong track?"

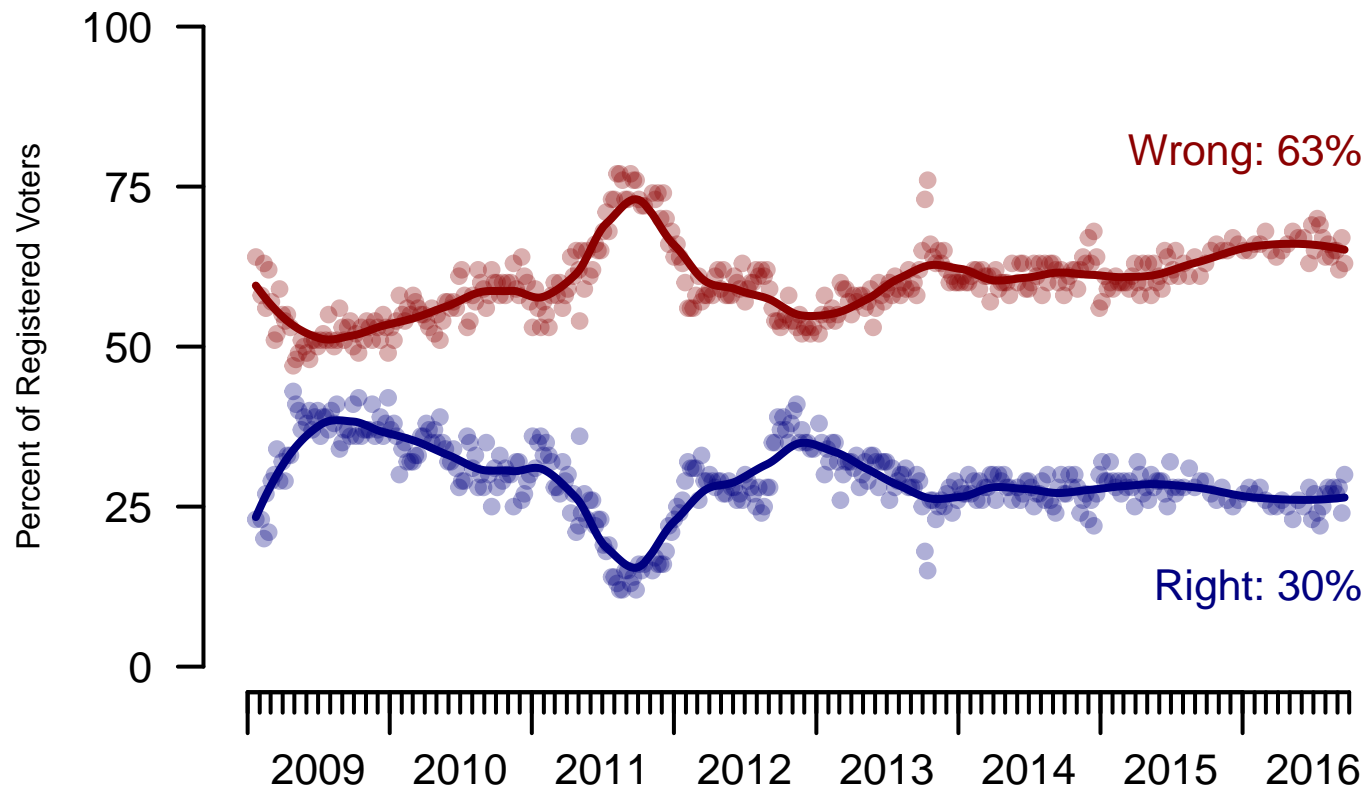


Figure 6: Direction of Country – Registered Voters

**6. Direction of Country – This Week – All Adults**

Would you say things in this country today are...

	Age (4 category)					Race			Census Region			
	Total	Under 30	30-44	45-64	65+	White	Black	Hispanic	North-east	Mid-west	South	West
Generally headed in the right direction	29%	40%	30%	23%	27%	25%	44%	42%	26%	34%	29%	28%
Off on the wrong track	61%	52%	57%	69%	62%	66%	44%	45%	59%	55%	62%	67%
Not sure	10%	8%	13%	8%	11%	9%	12%	13%	15%	11%	9%	5%
Totals (Unweighted N)	100% (1,300)	100% (240)	100% (348)	100% (529)	100% (183)	100% (1,012)	100% (153)	100% (135)	100% (240)	100% (296)	100% (482)	100% (282)

	Party ID			Ideology			Gender		Family Income (3 category)				
	Total	Dem	Ind	Rep	Lib	Mod	Con	Male	Female	Under 50	50-100	100+	Prefer not to say
Generally headed in the right direction	29%	48%	26%	10%	46%	34%	12%	32%	26%	28%	27%	39%	28%
Off on the wrong track	61%	40%	64%	83%	42%	56%	80%	60%	63%	62%	63%	52%	63%
Not sure	10%	12%	10%	6%	12%	10%	8%	8%	11%	10%	9%	9%	9%
Totals (Unweighted N)	100% (1,300)	100% (506)	100% (489)	100% (305)	100% (376)	100% (565)	100% (359)	100% (615)	100% (685)	100% (664)	100% (341)	100% (154)	100% (141)

<b>Sponsorship</b>	<i>The Economist</i>
<b>Fieldwork</b>	YouGov
<b>Interviewing Dates</b>	September 18 - 19, 2016
<b>Target population</b>	U.S. citizens, aged 18 and over.
<b>Sampling method</b>	Respondents were selected from YouGov's opt-in Internet panel using sample matching. A random sample (stratified by age, gender, race, education, and region) was selected from the 2010 American Community Study. Voter registration was imputed from the November 2010 Current Population Survey Registration and Voting Supplement. Religion, political interest, minor party identification, and non-placement on an ideology scale, were imputed from the 2008 Pew Religion in American Life Survey.
<b>Weighting</b>	The sample was weighted using propensity scores based on age, gender, race, education, news interest, voter registration, and non-placement on an ideology scale. The weights range from 0.1 to 6.17, with a mean of one and a standard deviation of 1.
<b>Number of respondents</b>	1300
<b>Margin of error</b>	± 3.9% (adjusted for weighting)
<b>Margin of error (Registered Voters)</b>	± 4% (adjusted for weighting)
<b>Survey mode</b>	Web-based interviews
<b>Full results</b>	Available online at <a href="http://today.yougov.com/news/categories/economist/">http://today.yougov.com/news/categories/economist/</a> .