

Interviewing: January 14 - 15, 2018
Sample: 1500 Adults nationwide online
1007 registered voters nationwide online



The Economist/YouGov Poll

Weekly Tracking

For immediate release

1. Presidential Job Approval – Historical

Do you approve or disapprove of the way [President's name] is handling his job as President?

	All Adults						
	Total Approve	Total Disapprove	Strongly Approve	Somewhat Approve	Somewhat Disapprove	Strongly Disapprove	Not Sure
January 12-16, 2018	42%	52%	21%	21%	12%	40%	6%
January 5-9, 2018	38%	51%	21%	17%	9%	42%	10%
December 29, 2017 - January 2, 2018	38%	52%	21%	17%	12%	40%	9%
December 23-25, 2017	38%	52%	22%	16%	10%	42%	9%
December 16-18, 2017	38%	52%	20%	18%	12%	40%	10%
December 9-11, 2017	38%	51%	20%	18%	9%	42%	12%
December 2-4, 2017	37%	51%	20%	17%	11%	40%	11%
November 25-27, 2017	39%	53%	19%	20%	12%	41%	8%
November 18-20, 2017	37%	54%	18%	19%	13%	41%	9%
November 11-13, 2017	34%	55%	17%	17%	12%	43%	11%
One Year Ago	52%	40%	32%	20%	13%	27%	8%

	Registered Voters						
	Total Approve	Total Disapprove	Strongly Approve	Somewhat Approve	Somewhat Disapprove	Strongly Disapprove	Not Sure
January 12-16, 2018	42%	54%	26%	16%	10%	44%	3%
January 5-9, 2018	42%	54%	26%	16%	9%	45%	4%
December 29, 2017 - January 2, 2018	43%	54%	26%	17%	10%	44%	3%
December 23-25, 2017	43%	53%	26%	17%	8%	45%	4%
December 16-18, 2017	41%	55%	25%	16%	9%	46%	3%
December 9-11, 2017	41%	54%	23%	18%	9%	45%	4%
December 2-4, 2017	43%	52%	23%	20%	9%	43%	5%
November 25-27, 2017	43%	53%	23%	20%	9%	44%	4%
November 18-20, 2017	40%	55%	20%	20%	11%	44%	5%
November 11-13, 2017	39%	56%	21%	18%	11%	45%	5%
One Year Ago	54%	42%	36%	18%	11%	31%	4%

Presidential Job Approval

"Do you approve or disapprove of the way
Donald Trump is handling his job as President?"

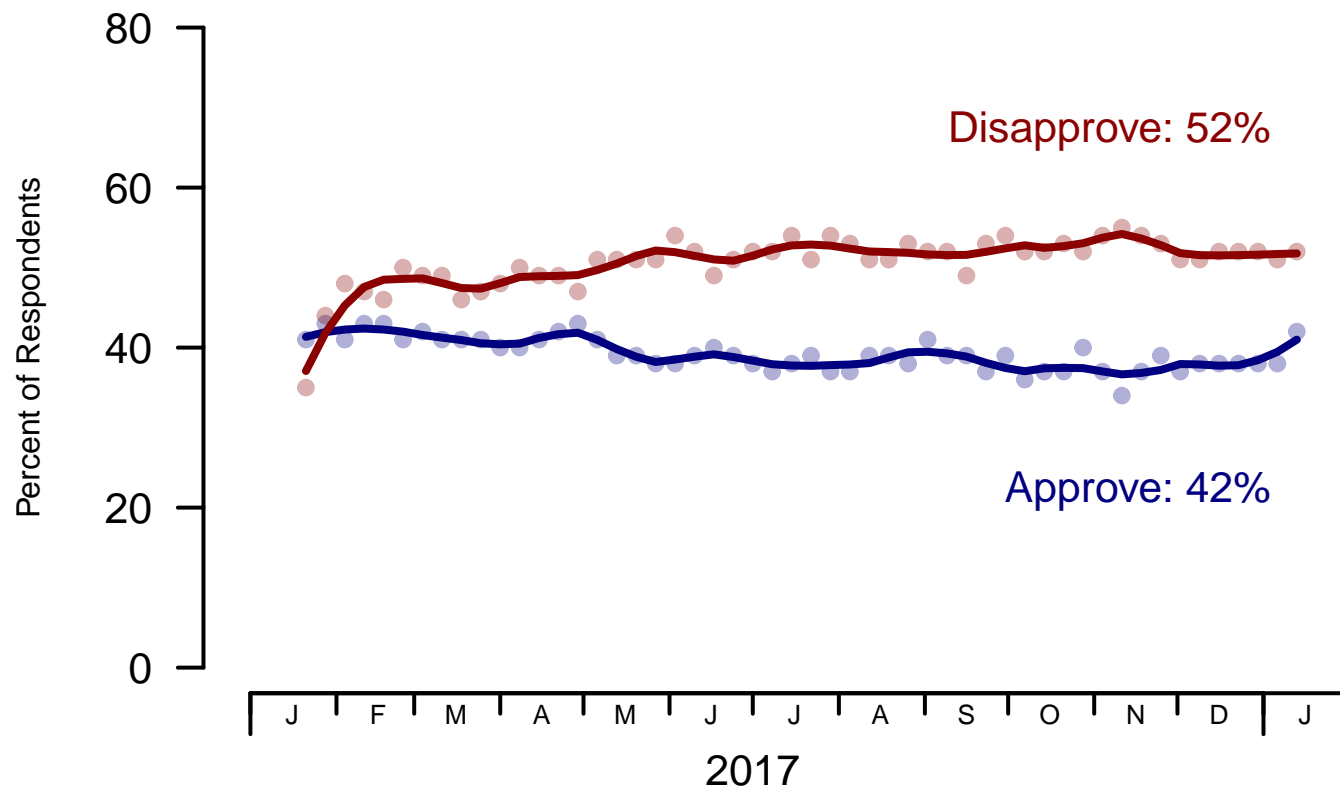


Figure 1: Trump Approval – All Adults

Presidential Job Approval

"Do you approve or disapprove of the way
Donald Trump is handling his job as President?"

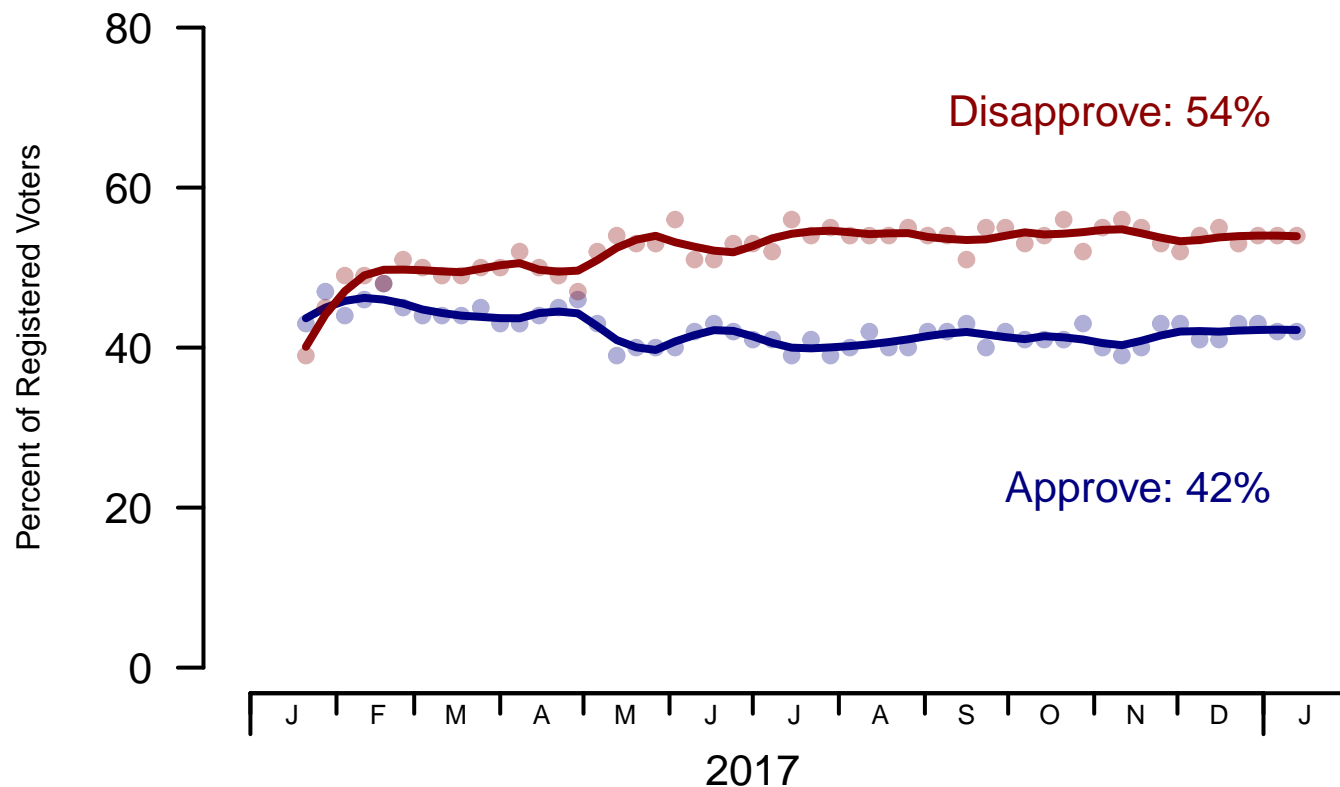


Figure 2: Trump Approval – Registered Voters

2. President Trump Job Approval – This Week – All Adults

Do you approve or disapprove of the way Donald Trump is handling his job as President?

	Age (4 category)					Race			Census Region			
	Total	Under 30	30-44	45-64	65+	White	Black	Hispanic	North-east	Mid-west	South	West
Strongly approve	21%	12%	14%	25%	34%	25%	6%	16%	18%	20%	22%	25%
Somewhat approve	21%	26%	19%	22%	14%	23%	9%	19%	21%	21%	21%	19%
Somewhat disapprove	12%	15%	15%	10%	7%	11%	8%	18%	10%	9%	14%	11%
Strongly disapprove	40%	36%	44%	38%	44%	36%	70%	33%	48%	44%	36%	37%
Not sure	6%	11%	9%	5%	1%	5%	7%	14%	3%	5%	8%	8%
Totals (Unweighted N)	100% (1,500)	100% (172)	100% (389)	100% (629)	100% (310)	100% (1,195)	100% (163)	100% (142)	100% (314)	100% (375)	100% (593)	100% (218)

	Party ID				Ideology			Gender		Family Income (3 category)			
	Total	Dem	Ind	Rep	Lib	Mod	Con	Male	Female	Under 50	50-100	100+	Prefer not to say
Strongly approve	21%	4%	19%	48%	3%	12%	47%	25%	18%	19%	23%	27%	22%
Somewhat approve	21%	7%	24%	33%	9%	19%	31%	25%	16%	20%	23%	24%	17%
Somewhat disapprove	12%	11%	13%	9%	5%	16%	11%	11%	13%	13%	12%	9%	10%
Strongly disapprove	40%	75%	34%	8%	81%	41%	10%	37%	43%	42%	39%	39%	38%
Not sure	6%	3%	10%	3%	2%	12%	1%	2%	10%	7%	3%	1%	13%
Totals (Unweighted N)	100% (1,500)	100% (536)	100% (591)	100% (373)	100% (426)	100% (589)	100% (485)	100% (662)	100% (838)	100% (620)	100% (423)	100% (241)	100% (216)

3. Approval of U.S. Congress – Historical

Overall, do you approve or disapprove of the way that the United States Congress is handling its job?

	All Adults							
	Total Approve	Total Disapprove	Strongly Approve	Somewhat Approve	Neutral	Somewhat Disapprove	Strongly Disapprove	Not Sure
January 12-16, 2018	12%	61%	3%	9%	17%	24%	37%	11%
January 5-9, 2018	12%	59%	2%	10%	13%	21%	38%	16%
December 29, 2017 - January 2, 2018	14%	56%	3%	11%	16%	20%	36%	14%
December 23-25, 2017	13%	57%	3%	10%	16%	19%	38%	15%
December 16-18, 2017	12%	58%	3%	9%	15%	22%	36%	16%
December 9-11, 2017	10%	61%	2%	8%	15%	23%	38%	15%
December 2-4, 2017	12%	56%	3%	9%	15%	18%	38%	17%
November 25-27, 2017	9%	62%	3%	6%	15%	23%	39%	14%
November 18-20, 2017	10%	62%	3%	7%	16%	21%	41%	13%
November 11-13, 2017	10%	60%	2%	8%	17%	20%	40%	14%
One Year Ago	13%	55%	4%	9%	16%	21%	34%	15%

	Registered Voters							
	Total Approve	Total Disapprove	Strongly Approve	Somewhat Approve	Neutral	Somewhat Disapprove	Strongly Disapprove	Not Sure
January 12-16, 2018	11%	69%	2%	9%	14%	25%	44%	5%
January 5-9, 2018	14%	67%	2%	12%	12%	25%	42%	8%
December 29, 2017 - January 2, 2018	15%	64%	3%	12%	14%	23%	41%	6%
December 23-25, 2017	14%	64%	2%	12%	14%	21%	43%	7%
December 16-18, 2017	12%	68%	3%	9%	12%	24%	44%	8%
December 9-11, 2017	12%	69%	2%	10%	13%	27%	42%	6%
December 2-4, 2017	11%	68%	3%	8%	12%	22%	46%	9%
November 25-27, 2017	10%	70%	3%	7%	13%	24%	46%	8%
November 18-20, 2017	9%	69%	2%	7%	14%	23%	46%	9%
November 11-13, 2017	9%	69%	2%	7%	15%	23%	46%	8%
One Year Ago	14%	61%	4%	10%	14%	23%	38%	11%

Congress Approval

"Do you approve of the way the
U.S. Congress is handling its job?"

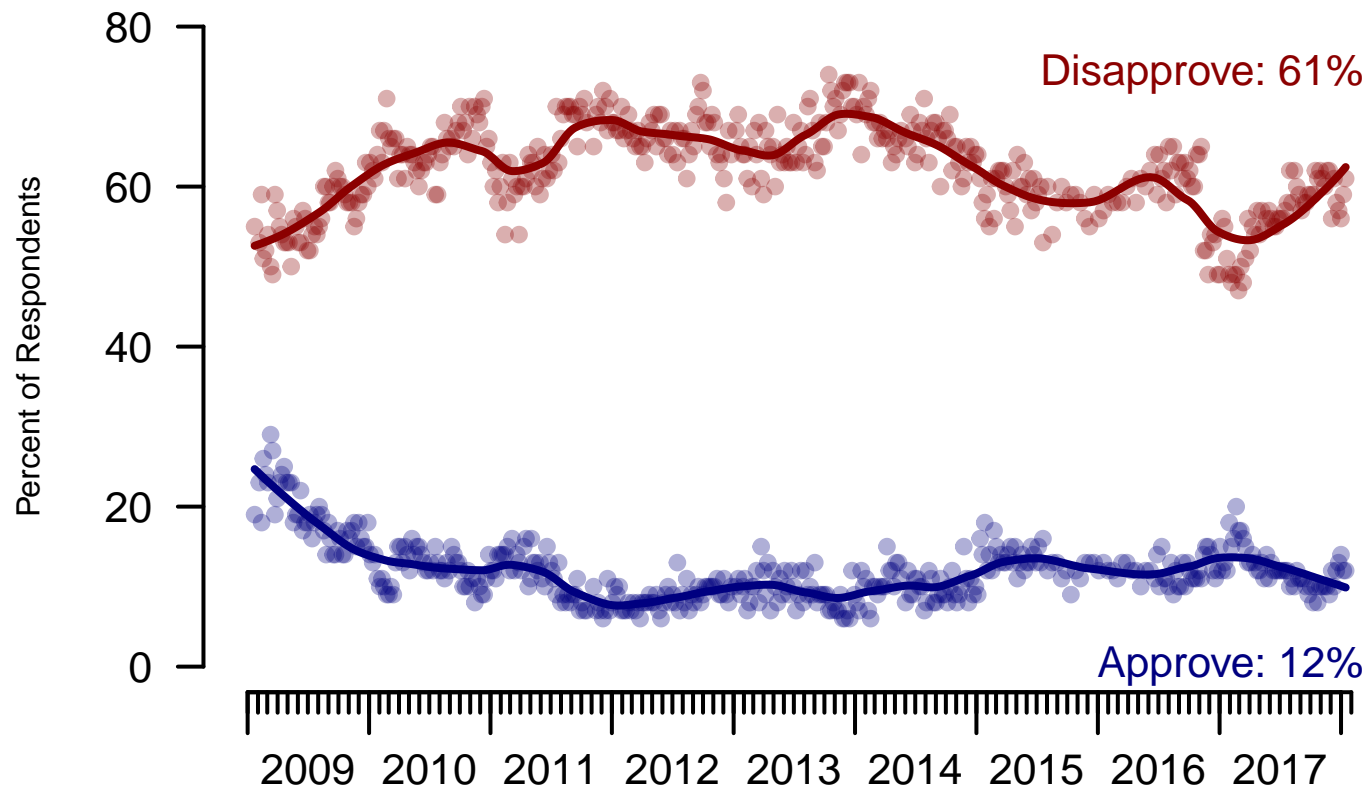


Figure 3: Congress Approval – All Adults

Congress Approval

"Do you approve of the way the
U.S. Congress is handling its job?"

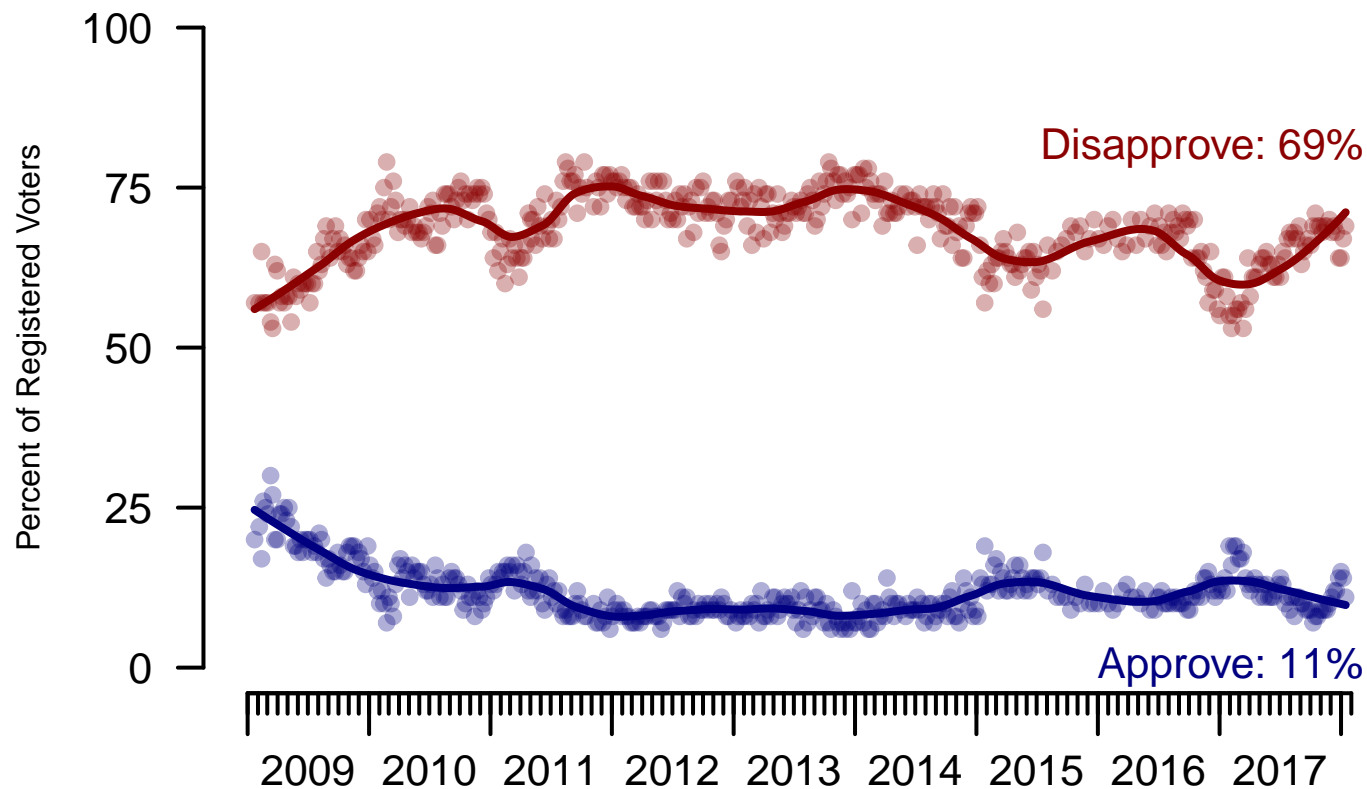


Figure 4: Congress Approval – Registered Voters

4. Approval of U.S. Congress – This Week – All Adults

Overall, do you approve or disapprove of the way that the United States Congress is handling its job?

	Age (4 category)					Race			Census Region			
	Total	Under 30	30-44	45-64	65+	White	Black	Hispanic	North-east	Mid-west	South	West
Strongly approve	3%	4%	3%	2%	2%	3%	1%	5%	2%	3%	3%	4%
Somewhat approve	9%	8%	7%	10%	9%	10%	3%	9%	8%	7%	10%	9%
Neither approve nor disapprove	17%	20%	18%	18%	10%	16%	14%	25%	23%	15%	15%	14%
Somewhat disapprove	24%	21%	22%	26%	26%	25%	19%	22%	20%	26%	23%	27%
Strongly disapprove	37%	26%	33%	37%	52%	36%	50%	26%	35%	40%	38%	32%
Not sure	11%	21%	18%	7%	3%	11%	12%	13%	12%	9%	12%	14%
Totals (Unweighted N)	100% (1,492)	100% (167)	100% (389)	100% (626)	100% (310)	100% (1,189)	100% (163)	100% (140)	100% (313)	100% (375)	100% (589)	100% (215)

	Party ID				Ideology			Gender		Family Income (3 category)			
	Total	Dem	Ind	Rep	Lib	Mod	Con	Male	Female	Under 50	50-100	100+	Prefer not to say
Strongly approve	3%	0%	2%	6%	1%	1%	6%	3%	3%	4%	1%	3%	1%
Somewhat approve	9%	5%	5%	20%	3%	6%	15%	9%	8%	8%	11%	10%	6%
Neither approve nor disapprove	17%	13%	20%	16%	11%	15%	23%	16%	17%	18%	19%	11%	13%
Somewhat disapprove	24%	22%	20%	34%	17%	24%	28%	28%	20%	22%	25%	30%	21%
Strongly disapprove	37%	52%	38%	16%	62%	34%	22%	37%	36%	35%	36%	44%	38%
Not sure	11%	8%	16%	9%	5%	19%	6%	7%	16%	13%	8%	2%	21%
Totals (Unweighted N)	100% (1,492)	100% (535)	100% (584)	100% (373)	100% (425)	100% (584)	100% (483)	100% (657)	100% (835)	100% (618)	100% (420)	100% (241)	100% (213)

5. Direction of country – Historical

Would you say things in this country today are...

	All Adults		
	Right Direction	Wrong Track	Not Sure
January 12-16, 2018	37%	51%	12%
January 5-9, 2018	33%	52%	15%
December 29, 2017 - January 2, 2018	33%	52%	14%
December 23-25, 2017	34%	52%	14%
December 16-18, 2017	33%	52%	15%
December 9-11, 2017	31%	53%	16%
December 2-4, 2017	29%	57%	14%
November 25-27, 2017	30%	54%	16%
November 18-20, 2017	31%	56%	14%
November 11-13, 2017	27%	57%	16%
One Year Ago	24%	57%	19%

	Registered Voters		
	Right Direction	Wrong Track	Not Sure
January 12-16, 2018	39%	53%	8%
January 5-9, 2018	38%	52%	11%
December 29, 2017 - January 2, 2018	37%	53%	9%
December 23-25, 2017	37%	52%	10%
December 16-18, 2017	36%	55%	9%
December 9-11, 2017	35%	55%	10%
December 2-4, 2017	33%	57%	10%
November 25-27, 2017	31%	56%	13%
November 18-20, 2017	32%	57%	11%
November 11-13, 2017	30%	58%	12%
One Year Ago	23%	61%	15%

Direction of Country

"Would you say things in this country today are generally headed in the right direction or off on the wrong track?"

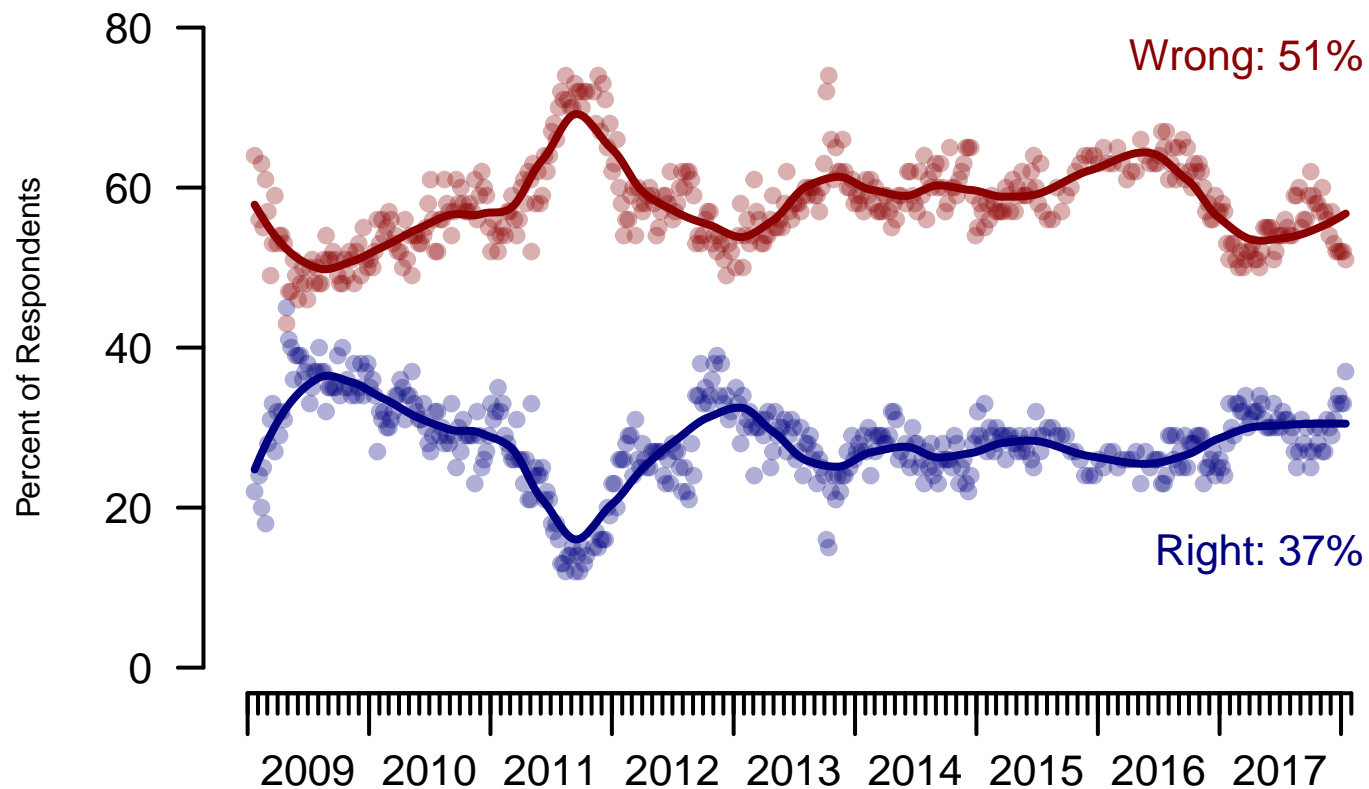


Figure 5: Direction of Country – All Adults

Direction of Country

"Would you say things in this country today are generally headed in the right direction or off on the wrong track?"

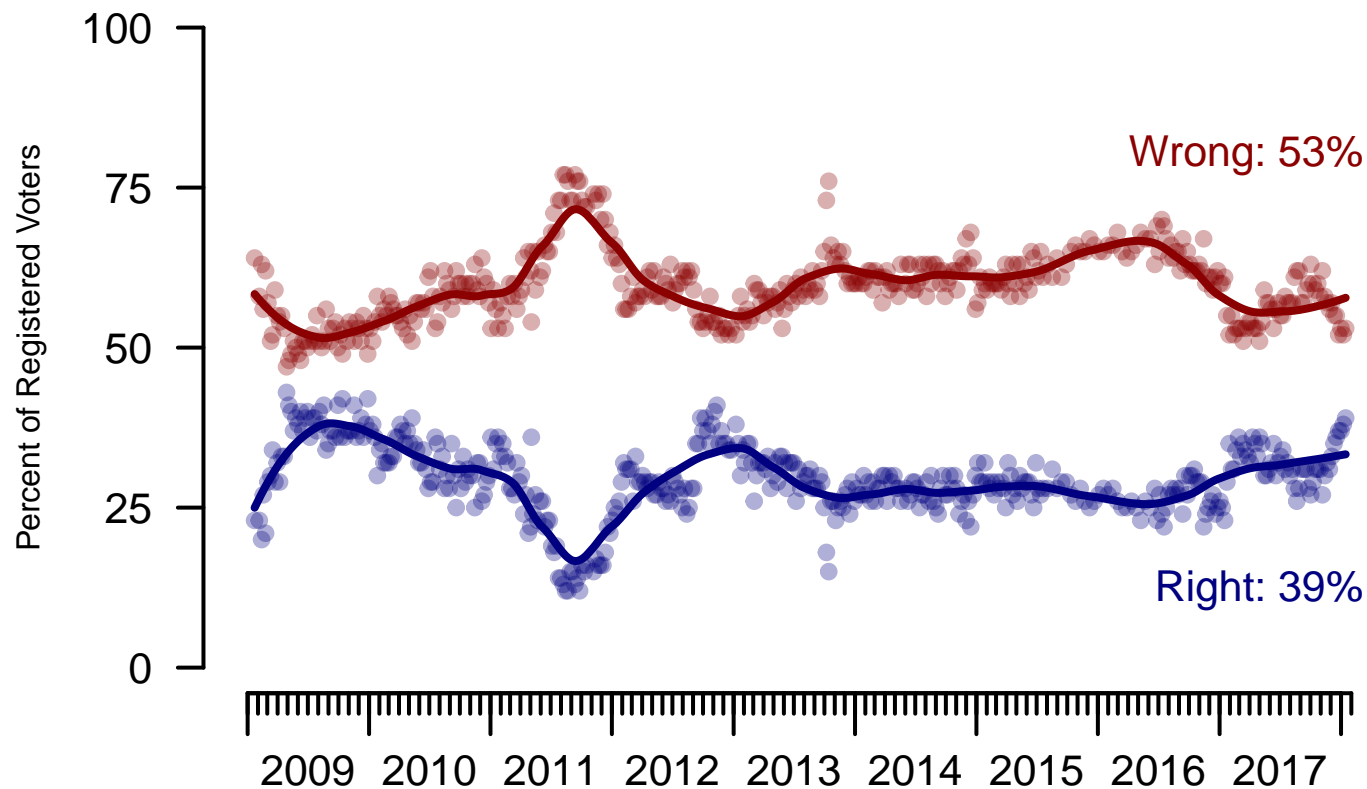


Figure 6: Direction of Country – Registered Voters

6. Direction of Country – This Week – All Adults

Would you say things in this country today are...

	Age (4 category)					Race			Census Region			
	Total	Under 30	30-44	45-64	65+	White	Black	Hispanic	North-east	Mid-west	South	West
Generally headed in the right direction	37%	35%	27%	43%	42%	42%	19%	31%	35%	33%	41%	38%
Off on the wrong track	51%	47%	60%	47%	51%	48%	69%	46%	52%	56%	49%	46%
Not sure	12%	18%	13%	10%	7%	10%	12%	22%	13%	11%	10%	15%
Totals (Unweighted N)	100% (1,500)	100% (172)	100% (389)	100% (629)	100% (310)	100% (1,195)	100% (163)	100% (142)	100% (314)	100% (375)	100% (593)	100% (218)

	Party ID				Ideology			Gender		Family Income (3 category)			
	Total	Dem	Ind	Rep	Lib	Mod	Con	Male	Female	Under 50	50-100	100+	Prefer not to say
Generally headed in the right direction	37%	14%	35%	72%	14%	28%	65%	45%	31%	35%	43%	44%	31%
Off on the wrong track	51%	80%	46%	21%	81%	55%	24%	45%	56%	54%	48%	48%	47%
Not sure	12%	6%	19%	7%	5%	17%	10%	10%	13%	11%	9%	8%	22%
Totals (Unweighted N)	100% (1,500)	100% (536)	100% (591)	100% (373)	100% (426)	100% (589)	100% (485)	100% (662)	100% (838)	100% (620)	100% (423)	100% (241)	100% (216)

Sponsorship	<i>The Economist</i>
Fieldwork	YouGov
Interviewing Dates	January 14 - 15, 2018
Target population	U.S. citizens, aged 18 and over.
Sampling method	Respondents were selected from YouGov's opt-in Internet panel using sample matching. A random sample (stratified by age, gender, race, education, and region) was selected from the 2014 American Community Study. Voter registration was imputed from the November 2014 Current Population Survey Registration and Voting Supplement.
Weighting	The sample was weighted based on age, gender, race, education, and 2016 Presidential vote. The weights range from 0.22 to 6.42, with a mean of one and a standard deviation of 0.8.
Number of respondents	1500
Margin of error	± 3.3% (adjusted for weighting)
Margin of error (Registered Voters)	± 3.3% (adjusted for weighting)
Survey mode	Web-based interviews
Full results	Available online at http://today.yougov.com/news/categories/economist/ .