

Interviewing: August 28 - September 1, 2015  
Sample: 2000 Adults nationwide online  
1343 registered voters nationwide online



# *The Economist/YouGov* Poll

## Weekly Tracking

For immediate release

**1. Approval of Obama as President – Historical**

Do you approve or disapprove of the way Barack Obama is handling his job as President?

	All Adults						
	Total Approve	Total Disapprove	Strongly Approve	Somewhat Approve	Somewhat Disapprove	Strongly Disapprove	Not Sure
August 28-September 1, 2015	46%	47%	21%	25%	12%	35%	7%
August 14-18, 2015	44%	49%	19%	25%	14%	35%	7%
August 1-3, 2015	46%	48%	19%	27%	13%	35%	5%
July 18-20, 2015	49%	46%	23%	26%	14%	32%	5%
July 11-13, 2015	45%	51%	18%	27%	16%	35%	4%
July 4-6, 2015	45%	52%	19%	26%	18%	34%	3%
June 27-29, 2015	48%	49%	19%	29%	11%	38%	3%
June 20-22, 2015	47%	52%	16%	31%	15%	37%	2%
June 13-15, 2015	46%	52%	19%	27%	15%	37%	2%
June 6-8, 2015	43%	54%	16%	27%	18%	36%	3%
One Year Ago	42%	54%	15%	27%	15%	39%	4%

	Registered Voters						
	Total Approve	Total Disapprove	Strongly Approve	Somewhat Approve	Somewhat Disapprove	Strongly Disapprove	Not Sure
August 28-September 1, 2015	44%	53%	22%	22%	12%	41%	3%
August 14-18, 2015	43%	53%	21%	22%	13%	40%	4%
August 1-3, 2015	44%	54%	21%	23%	12%	42%	2%
July 18-20, 2015	46%	50%	22%	24%	12%	38%	4%
July 11-13, 2015	43%	54%	19%	24%	15%	39%	3%
July 4-6, 2015	43%	55%	19%	24%	16%	39%	1%
June 27-29, 2015	45%	53%	20%	25%	10%	43%	2%
June 20-22, 2015	44%	55%	17%	27%	13%	42%	1%
June 13-15, 2015	42%	56%	16%	26%	13%	43%	2%
June 6-8, 2015	42%	55%	18%	24%	15%	40%	2%
One Year Ago	41%	56%	15%	26%	12%	44%	3%

## Obama Approval

"Do you approve or disapprove of the way Barack Obama is handling his job as President?"

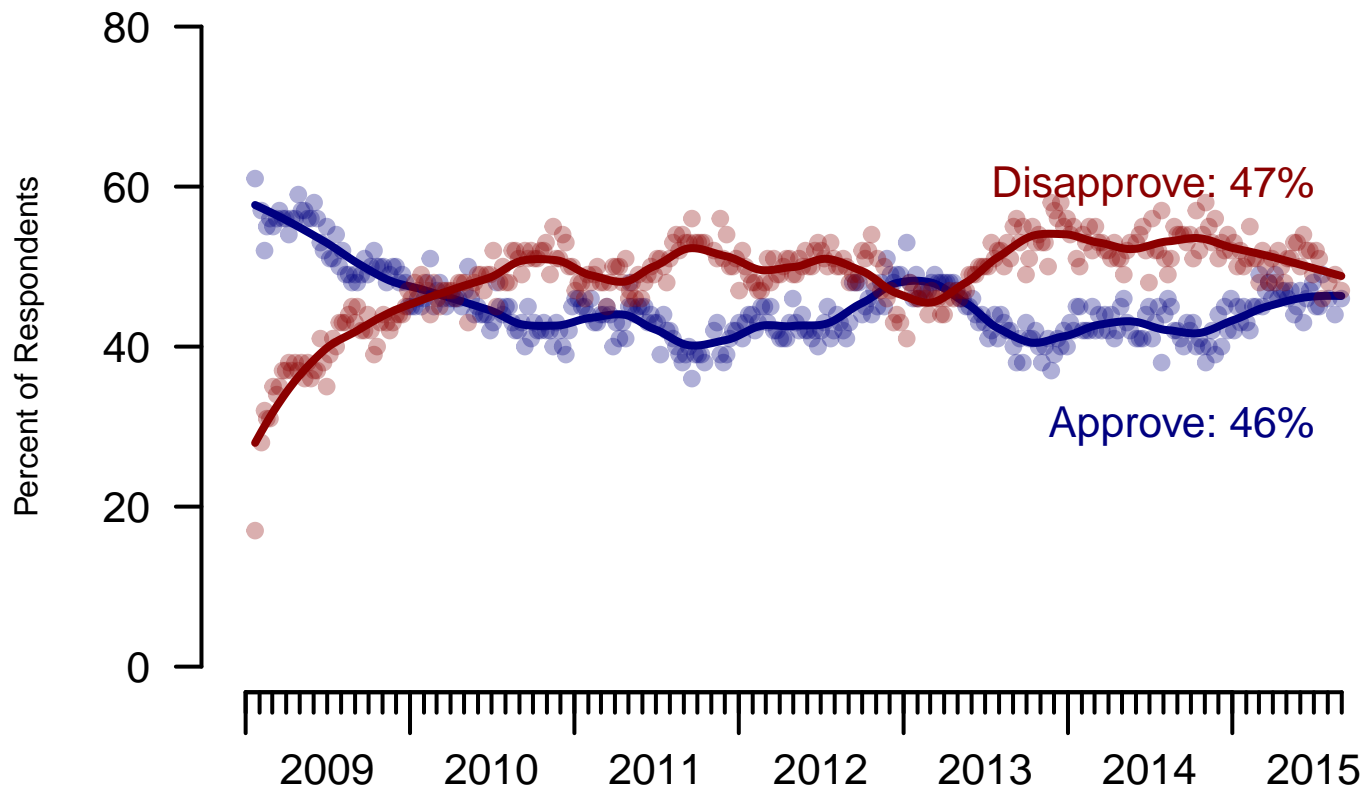


Figure 1: Obama Approval – All Adults

## Obama Approval

"Do you approve or disapprove of the way Barack Obama is handling his job as President?"

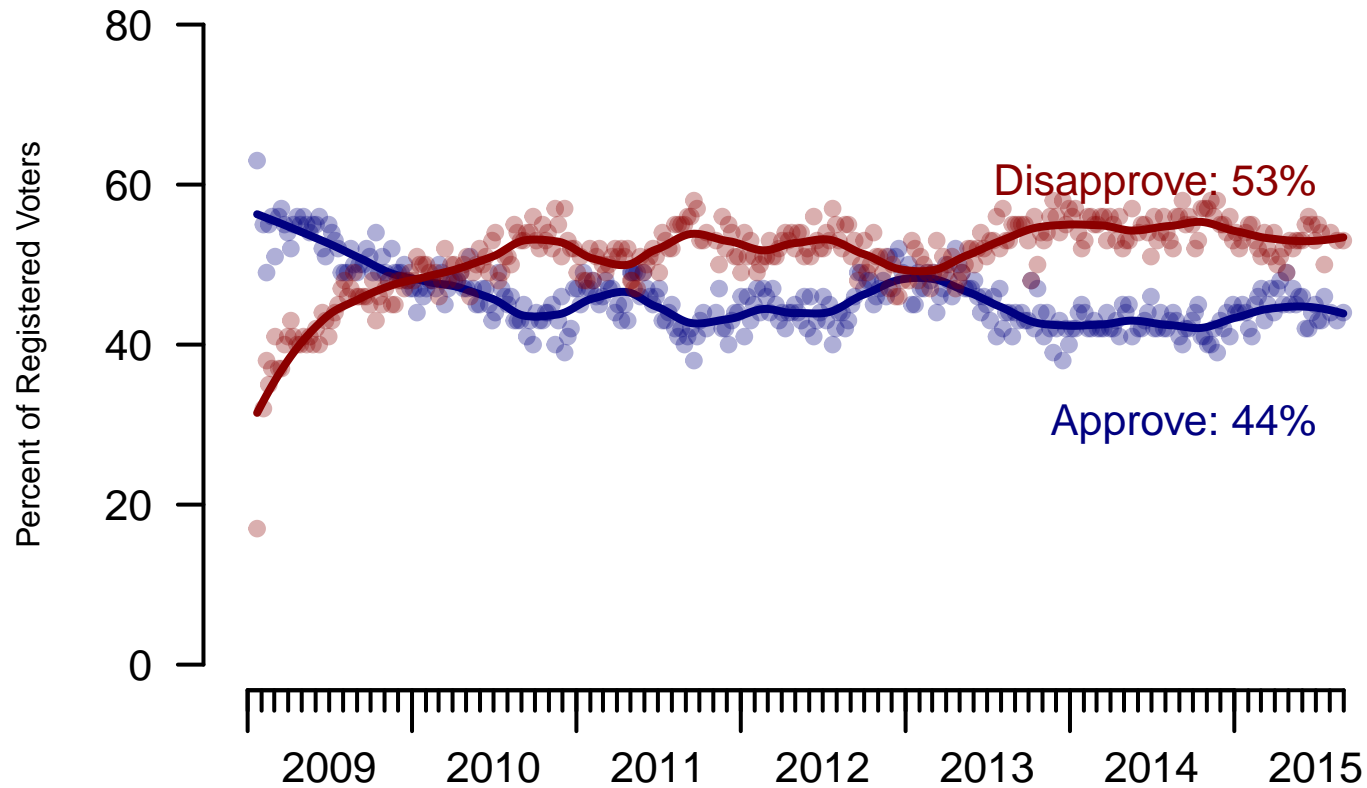


Figure 2: Obama Approval – Registered Voters

**2. Approval of Obama as President – This Week – All Adults**

Do you approve or disapprove of the way Barack Obama is handling his job as President?

	Age					Race			Region			
	Total	18-29	30-44	45-64	65+	White	Black	Hispanic	North-east	Mid-west	South	West
Strongly Approve	21%	16%	22%	21%	23%	16%	42%	29%	22%	18%	22%	21%
Somewhat Approve	25%	34%	24%	24%	20%	24%	32%	30%	29%	27%	22%	26%
Somewhat Disapprove	12%	22%	11%	10%	7%	13%	7%	13%	14%	14%	12%	11%
Strongly Disapprove	35%	18%	33%	39%	48%	42%	8%	14%	29%	37%	37%	33%
Not Sure	7%	11%	10%	6%	1%	5%	12%	14%	6%	5%	8%	9%
Totals (Unweighted N)	100% (2,000)	100% (375)	100% (540)	100% (790)	100% (295)	100% (1,500)	100% (244)	100% (256)	100% (369)	100% (423)	100% (784)	100% (424)

	3 Point Party ID			3 Point Ideology			Gender		Family Income			
	Total	Dem	Ind	Rep	Lib	Mod	Con	Male	Female	Under 50	50-100	100+
Strongly Approve	21%	45%	12%	3%	44%	19%	8%	20%	21%	21%	22%	22%
Somewhat Approve	25%	37%	27%	9%	40%	31%	10%	26%	25%	28%	21%	23%
Somewhat Disapprove	12%	8%	14%	16%	6%	15%	13%	12%	13%	11%	15%	12%
Strongly Disapprove	35%	6%	36%	69%	6%	25%	64%	37%	32%	32%	38%	40%
Not Sure	7%	4%	11%	3%	5%	10%	5%	6%	8%	8%	5%	3%
Totals (Unweighted N)	100% (2,000)	100% (735)	100% (799)	100% (466)	100% (515)	100% (907)	100% (578)	100% (902)	100% (1,098)	100% (994)	100% (507)	100% (239)

**3. Approval of U.S. Congress – Historical**

Overall, do you approve or disapprove of the way that the United States Congress is handling its job?

	All Adults							
	Total Approve	Total Disapprove	Strongly Approve	Somewhat Approve	Neutral	Somewhat Disapprove	Strongly Disapprove	Not Sure
August 28-September 1, 2015	13%	58%	3%	10%	17%	22%	36%	12%
August 14-18, 2015	13%	54%	3%	10%	19%	21%	33%	14%
August 1-3, 2015	12%	60%	3%	9%	18%	25%	35%	11%
July 18-20, 2015	16%	53%	2%	14%	20%	24%	29%	11%
July 11-13, 2015	13%	60%	2%	11%	17%	23%	37%	10%
July 4-6, 2015	15%	59%	4%	11%	19%	26%	33%	8%
June 27-29, 2015	13%	58%	2%	11%	20%	25%	33%	9%
June 20-22, 2015	14%	61%	3%	11%	20%	27%	34%	6%
June 13-15, 2015	15%	57%	3%	12%	20%	23%	34%	8%
June 6-8, 2015	13%	61%	3%	10%	19%	26%	35%	7%
One Year Ago	8%	68%	2%	6%	16%	25%	43%	8%

	Registered Voters							
	Total Approve	Total Disapprove	Strongly Approve	Somewhat Approve	Neutral	Somewhat Disapprove	Strongly Disapprove	Not Sure
August 28-September 1, 2015	11%	65%	3%	8%	17%	24%	41%	8%
August 14-18, 2015	13%	62%	3%	10%	18%	24%	38%	7%
August 1-3, 2015	12%	66%	3%	9%	16%	26%	40%	6%
July 18-20, 2015	18%	56%	3%	15%	18%	24%	32%	8%
July 11-13, 2015	14%	62%	2%	12%	18%	23%	39%	6%
July 4-6, 2015	13%	63%	3%	10%	20%	26%	37%	4%
June 27-29, 2015	14%	61%	2%	12%	18%	26%	35%	6%
June 20-22, 2015	14%	65%	2%	12%	17%	27%	38%	5%
June 13-15, 2015	14%	59%	1%	13%	21%	23%	36%	5%
June 6-8, 2015	12%	65%	2%	10%	17%	28%	37%	6%
One Year Ago	8%	72%	2%	6%	14%	26%	46%	6%

### Congress Approval

"Do you approve of the way the  
U.S. Congress is handling its job?"

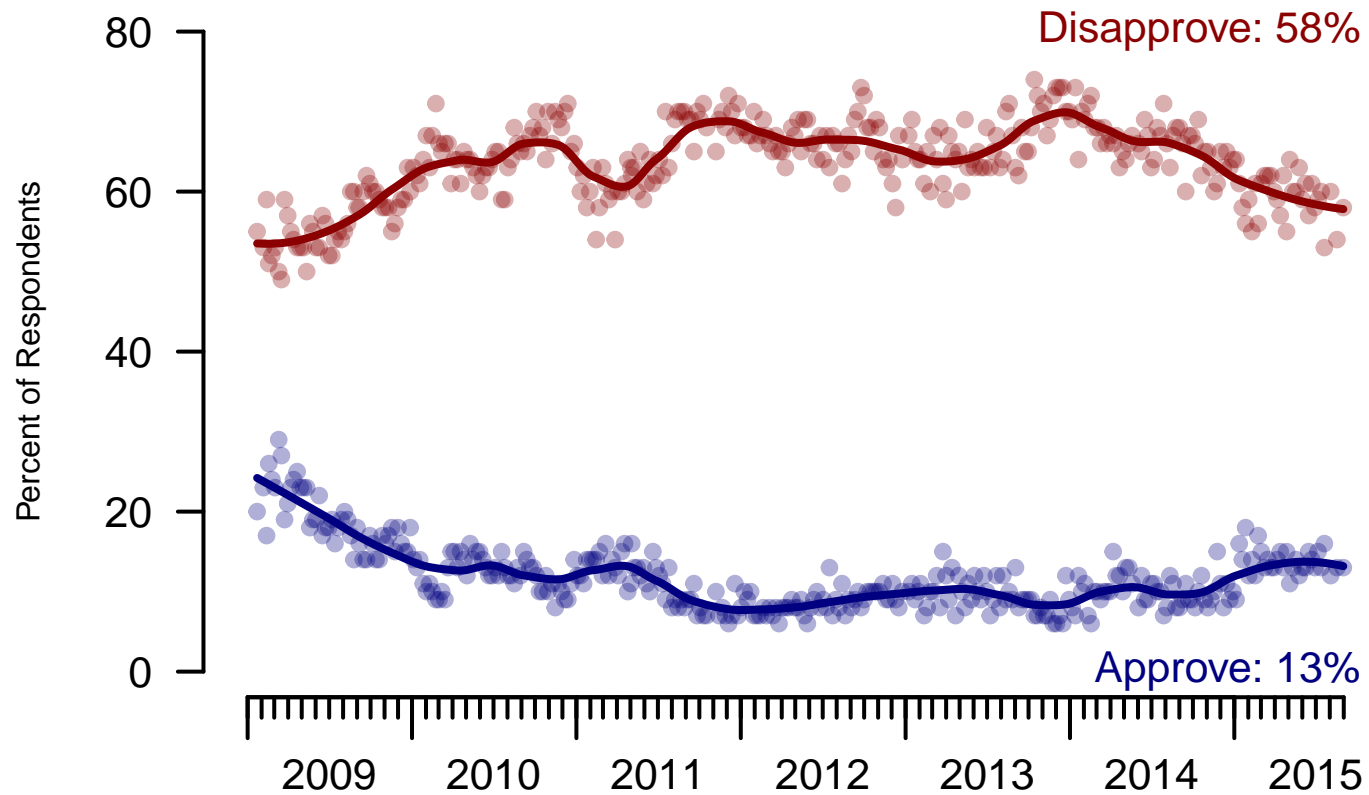


Figure 3: Congress Approval – All Adults

## Congress Approval

"Do you approve of the way the  
U.S. Congress is handling its job?"

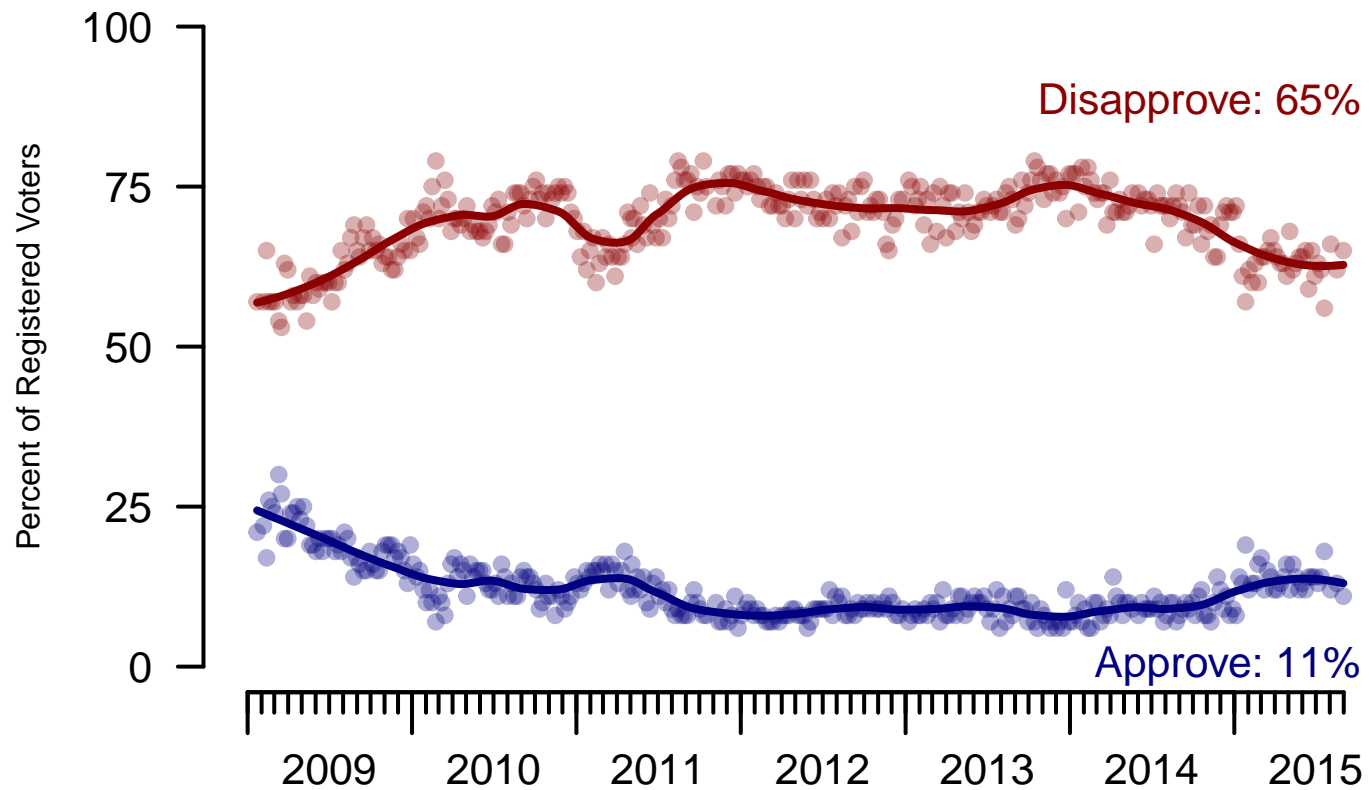


Figure 4: Congress Approval – Registered Voters



**4. Approval of U.S. Congress – This Week – All Adults**

Overall, do you approve or disapprove of the way that the United States Congress is handling its job?

	Age					Race			Region			
	Total	18-29	30-44	45-64	65+	White	Black	Hispanic	North-east	Mid-west	South	West
Strongly approve	3%	3%	5%	2%	2%	1%	8%	6%	4%	2%	3%	2%
Somewhat approve	10%	12%	12%	8%	7%	8%	13%	18%	12%	8%	10%	9%
Neither approve nor disapprove	17%	22%	15%	18%	14%	16%	18%	22%	18%	19%	18%	15%
Somewhat disapprove	22%	18%	20%	23%	26%	25%	13%	11%	18%	24%	22%	22%
Strongly disapprove	36%	25%	33%	40%	45%	40%	28%	21%	31%	37%	36%	40%
Not sure	12%	20%	15%	9%	5%	10%	20%	21%	18%	10%	11%	12%
Totals (Unweighted N)	100% (1,967)	100% (368)	100% (525)	100% (782)	100% (292)	100% (1,481)	100% (240)	100% (246)	100% (361)	100% (416)	100% (777)	100% (413)

	3 Point Party ID			3 Point Ideology			Gender		Family Income			
	Total	Dem	Ind	Rep	Lib	Mod	Con	Male	Female	Under 50	50-100	100+
Strongly approve	3%	5%	2%	2%	3%	3%	3%	2%	4%	4%	2%	2%
Somewhat approve	10%	12%	8%	10%	12%	8%	10%	9%	10%	12%	10%	7%
Neither approve nor disapprove	17%	15%	14%	25%	11%	17%	21%	15%	19%	19%	16%	14%
Somewhat disapprove	22%	17%	21%	29%	19%	20%	27%	23%	21%	21%	24%	24%
Strongly disapprove	36%	40%	39%	26%	48%	34%	31%	41%	31%	31%	41%	50%
Not sure	12%	10%	16%	8%	8%	18%	8%	10%	14%	13%	8%	3%
Totals (Unweighted N)	100% (1,967)	100% (725)	100% (781)	100% (461)	100% (506)	100% (891)	100% (570)	100% (893)	100% (1,074)	100% (980)	100% (499)	100% (236)

**5. Direction of country – Historical**

Would you say things in this country today are...

	All Adults		
	Right Direction	Wrong Track	Not Sure
August 28-September 1, 2015	29%	60%	11%
August 14-18, 2015	30%	56%	14%
August 1-3, 2015	30%	56%	14%
July 18-20, 2015	29%	57%	14%
July 11-13, 2015	27%	63%	10%
July 4-6, 2015	29%	58%	13%
June 27-29, 2015	32%	60%	8%
June 20-22, 2015	25%	64%	11%
June 13-15, 2015	26%	62%	13%
June 6-8, 2015	29%	60%	11%
One Year Ago	25%	63%	12%

	Registered Voters		
	Right Direction	Wrong Track	Not Sure
August 28-September 1, 2015	28%	64%	7%
August 14-18, 2015	31%	61%	9%
August 1-3, 2015	28%	63%	9%
July 18-20, 2015	28%	61%	11%
July 11-13, 2015	27%	65%	8%
July 4-6, 2015	28%	62%	10%
June 27-29, 2015	32%	61%	7%
June 20-22, 2015	25%	64%	11%
June 13-15, 2015	27%	65%	9%
June 6-8, 2015	29%	59%	11%
One Year Ago	25%	63%	12%

## Direction of Country

"Would you say things in this country today are generally headed in the right direction or off on the wrong track?"

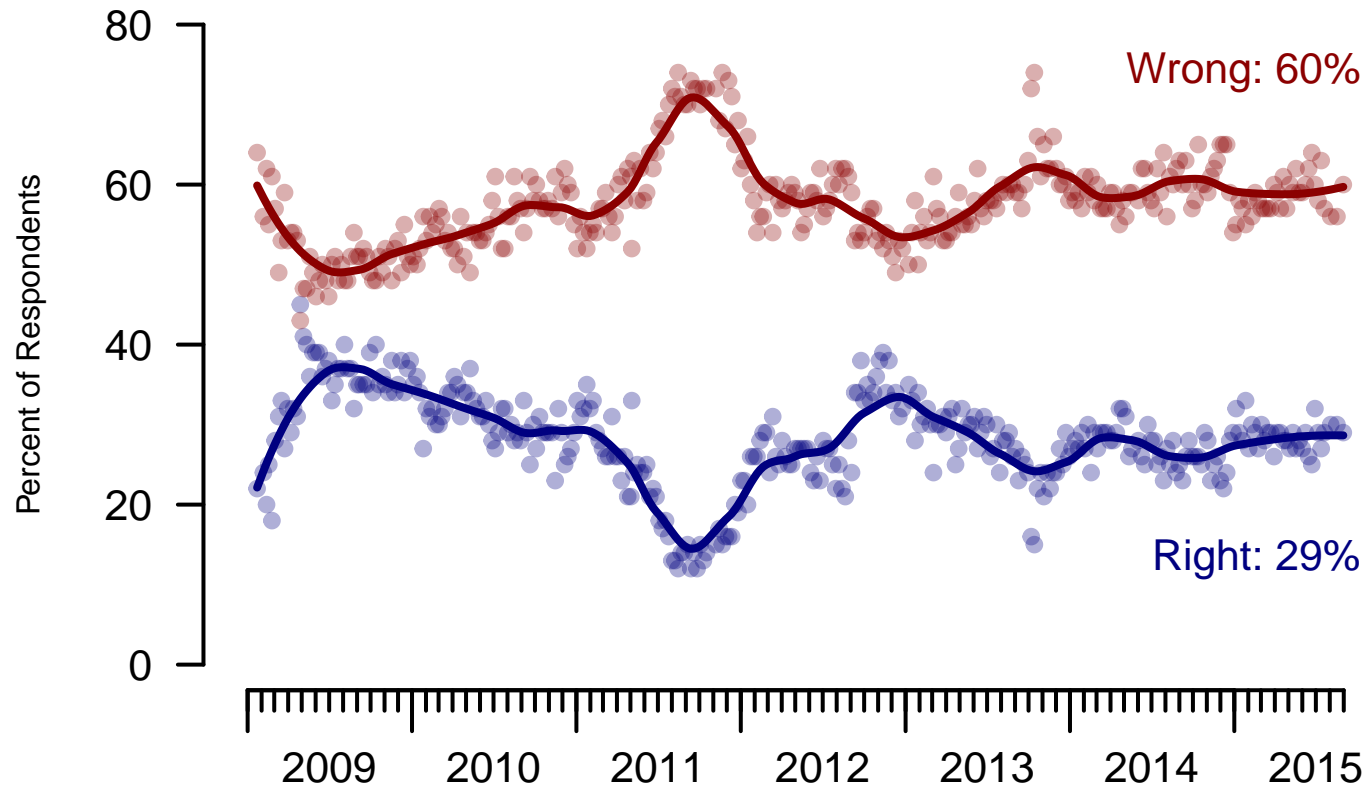


Figure 5: Direction of Country – All Adults

## Direction of Country

"Would you say things in this country today are generally headed in the right direction or off on the wrong track?"

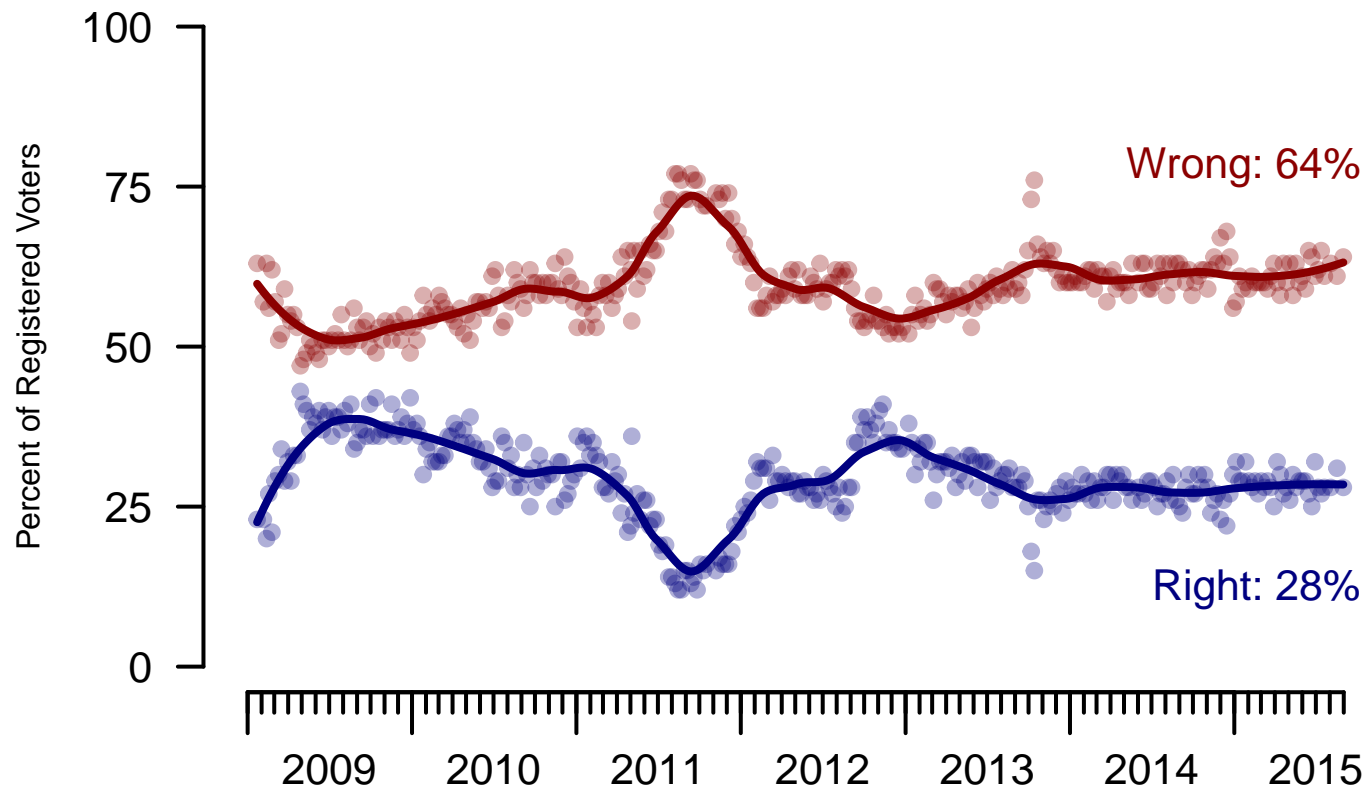


Figure 6: Direction of Country – Registered Voters

**6. Direction of Country – This Week – All Adults**

Would you say things in this country today are...

	Age					Race			Region			
	Total	18-29	30-44	45-64	65+	White	Black	Hispanic	North-east	Mid-west	South	West
Generally headed in the right direction	29%	29%	31%	29%	26%	25%	37%	46%	28%	30%	27%	32%
Off on the wrong track	60%	53%	58%	62%	65%	65%	46%	41%	55%	61%	64%	57%
Not sure	11%	18%	11%	8%	9%	10%	17%	13%	18%	9%	9%	11%
Totals (Unweighted N)	100% (2,000)	100% (375)	100% (540)	100% (790)	100% (295)	100% (1,500)	100% (244)	100% (256)	100% (369)	100% (423)	100% (784)	100% (424)

	3 Point Party ID			3 Point Ideology			Gender		Family Income			
	Total	Dem	Ind	Rep	Lib	Mod	Con	Male	Female	Under 50	50-100	100+
Generally headed in the right direction	29%	55%	21%	10%	55%	30%	13%	31%	27%	29%	30%	36%
Off on the wrong track	60%	34%	64%	86%	34%	55%	81%	60%	60%	59%	62%	60%
Not sure	11%	11%	15%	5%	11%	15%	6%	9%	13%	12%	8%	5%
Totals (Unweighted N)	100% (2,000)	100% (735)	100% (799)	100% (466)	100% (515)	100% (907)	100% (578)	100% (902)	100% (1,098)	100% (994)	100% (507)	100% (239)

**The Economist/YouGov Poll**  
August 28 - September 1, 2015



<b>Sponsorship</b>	<i>The Economist</i>
<b>Fieldwork</b>	YouGov
<b>Interviewing Dates</b>	August 28 - September 1, 2015
<b>Target population</b>	U.S. citizens, aged 18 and over.
<b>Sampling method</b>	Respondents were selected from YouGov's opt-in Internet panel using sample matching. A random sample (stratified by age, gender, race, education, and region) was selected from the 2010 American Community Study. Voter registration was imputed from the November 2010 Current Population Survey Registration and Voting Supplement. Religion, political interest, minor party identification, and non-placement on an ideology scale, were imputed from the 2008 Pew Religion in American Life Survey.
<b>Weighting</b>	The sample was weighted using propensity scores based on age, gender, race, education, news interest, voter registration, and non-placement on an ideology scale. The weights range from 0.14 to 4.12, with a mean of one and a standard deviation of 0.8.
<b>Number of respondents</b>	2000
<b>Margin of error</b>	± 2.8% (adjusted for weighting)
<b>Margin of error (Registered Voters)</b>	± 3.1% (adjusted for weighting)
<b>Survey mode</b>	Web-based interviews
<b>Full results</b>	Available online at <a href="http://today.yougov.com/news/categories/economist/">http://today.yougov.com/news/categories/economist/</a> .