

Interviewing: April 6-8, 2013  
Sample: 1000 Adults nationwide online  
602 registered voters nationwide online



806 D Street, SE  
Washington, DC 20003  
Contact:  
Thomas Riehle  
Ph: (202) 544-2550

# *The Economist/YouGov Poll*

## Weekly Tracking

For immediate release

**1. Approval of Obama as President – Historical**

Do you approve or disapprove of the way Barack Obama is handling his job as President?

| All Adults             |                          |                             |                     |                     |                        |                        |             |
|------------------------|--------------------------|-----------------------------|---------------------|---------------------|------------------------|------------------------|-------------|
|                        | <b>Total<br/>Approve</b> | <b>Total<br/>Disapprove</b> | Strongly<br>Approve | Somewhat<br>Approve | Somewhat<br>Disapprove | Strongly<br>Disapprove | Not<br>Sure |
| April 6-8, 2013        | 48%                      | 46%                         | 20%                 | 28%                 | 14%                    | 32%                    | 6%          |
| March 30-April 1, 2013 | 48%                      | 44%                         | 20%                 | 28%                 | 10%                    | 34%                    | 8%          |
| March 23-25, 2013      | 48%                      | 44%                         | 20%                 | 28%                 | 11%                    | 33%                    | 7%          |
| March 16-18, 2013      | 48%                      | 46%                         | 20%                 | 28%                 | 10%                    | 36%                    | 6%          |
| March 9-11, 2013       | 49%                      | 46%                         | 22%                 | 27%                 | 9%                     | 37%                    | 5%          |
| March 2-4, 2013        | 48%                      | 47%                         | 21%                 | 27%                 | 13%                    | 34%                    | 6%          |
| February 23-25, 2013   | 47%                      | 44%                         | 21%                 | 26%                 | 12%                    | 32%                    | 9%          |
| February 16-18, 2013   | 47%                      | 46%                         | 23%                 | 24%                 | 14%                    | 32%                    | 6%          |
| February 9-11, 2013    | 47%                      | 47%                         | 24%                 | 23%                 | 13%                    | 34%                    | 6%          |
| February 2-4, 2013     | 45%                      | 47%                         | 19%                 | 26%                 | 11%                    | 36%                    | 8%          |
| One Year Ago           | 41%                      | 50%                         | 17%                 | 24%                 | 13%                    | 37%                    | 9%          |

| Registered Voters      |                          |                             |                     |                     |                        |                        |             |
|------------------------|--------------------------|-----------------------------|---------------------|---------------------|------------------------|------------------------|-------------|
|                        | <b>Total<br/>Approve</b> | <b>Total<br/>Disapprove</b> | Strongly<br>Approve | Somewhat<br>Approve | Somewhat<br>Disapprove | Strongly<br>Disapprove | Not<br>Sure |
| April 6-8, 2013        | 48%                      | 50%                         | 21%                 | 27%                 | 11%                    | 39%                    | 2%          |
| March 30-April 1, 2013 | 50%                      | 49%                         | 23%                 | 27%                 | 10%                    | 39%                    | 2%          |
| March 23-25, 2013      | 47%                      | 51%                         | 22%                 | 25%                 | 9%                     | 42%                    | 3%          |
| March 16-18, 2013      | 46%                      | 49%                         | 19%                 | 27%                 | 8%                     | 41%                    | 3%          |
| March 9-11, 2013       | 44%                      | 53%                         | 22%                 | 22%                 | 10%                    | 43%                    | 3%          |
| March 2-4, 2013        | 49%                      | 49%                         | 25%                 | 24%                 | 11%                    | 38%                    | 3%          |
| February 23-25, 2013   | 48%                      | 47%                         | 23%                 | 25%                 | 10%                    | 37%                    | 5%          |
| February 16-18, 2013   | 49%                      | 49%                         | 26%                 | 23%                 | 11%                    | 38%                    | 3%          |
| February 9-11, 2013    | 47%                      | 50%                         | 26%                 | 21%                 | 10%                    | 40%                    | 3%          |
| February 2-4, 2013     | 48%                      | 50%                         | 25%                 | 23%                 | 11%                    | 39%                    | 3%          |
| One Year Ago           | 42%                      | 54%                         | 20%                 | 22%                 | 11%                    | 43%                    | 4%          |

## Obama Approval

"Do you approve or disapprove of the way  
Barack Obama is handling his job as President?"

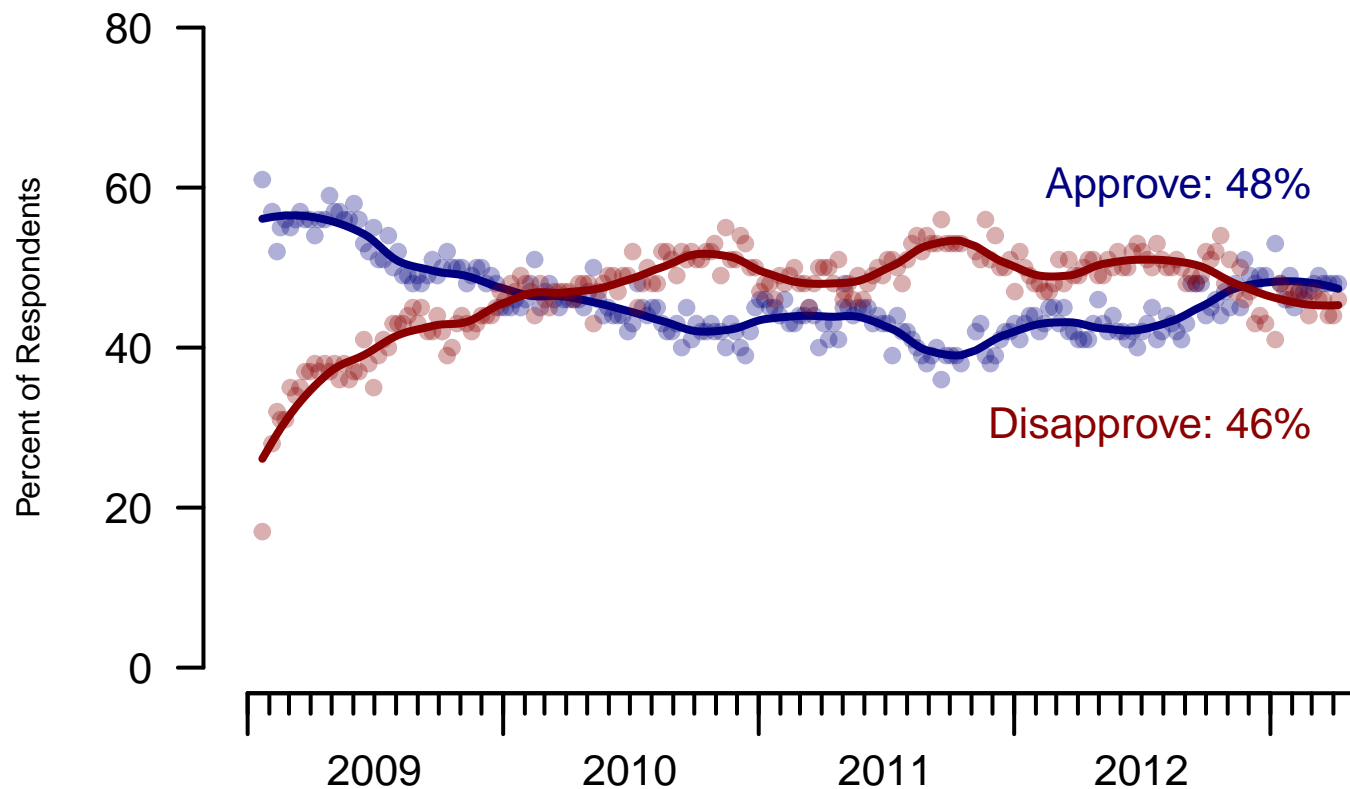


Figure 1: Obama Approval – All Adults

## Obama Approval

"Do you approve or disapprove of the way  
Barack Obama is handling his job as President?"

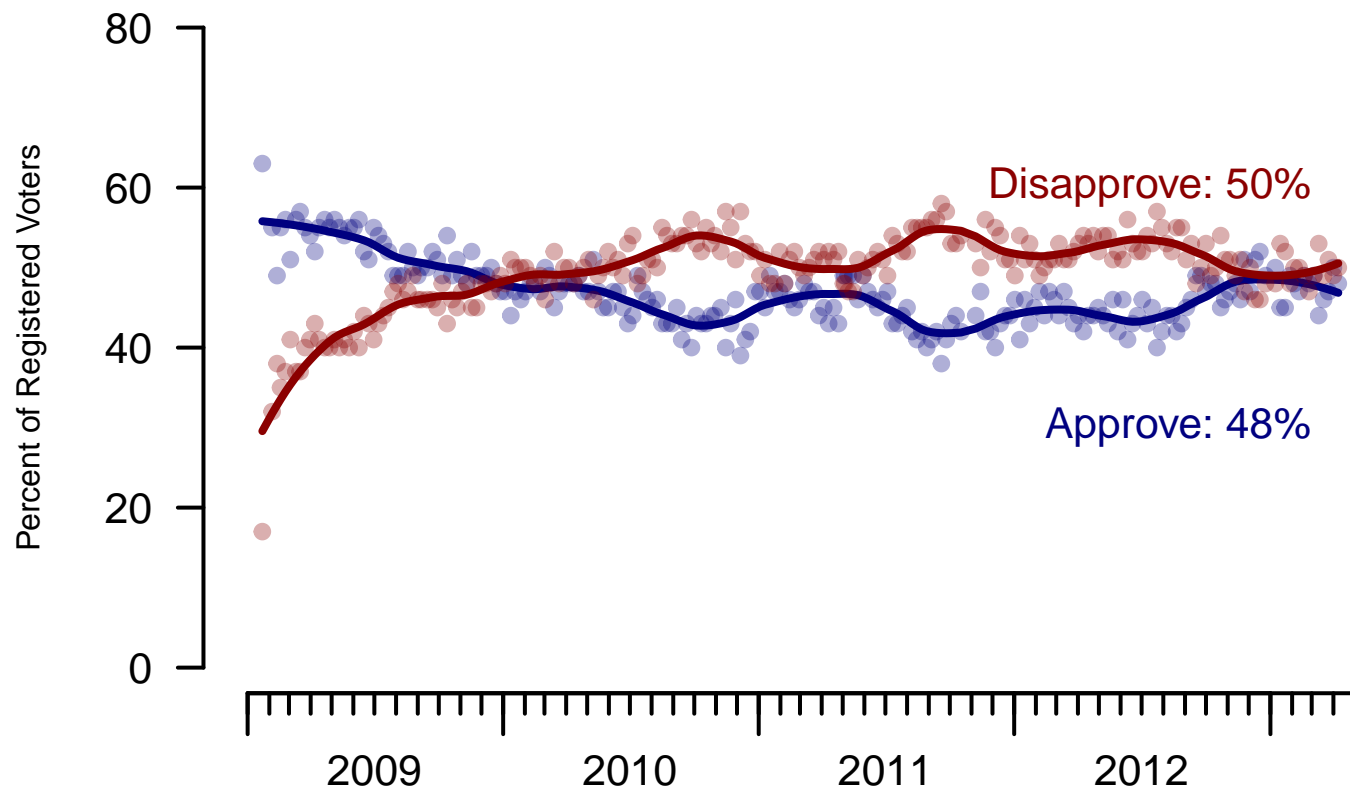


Figure 2: Obama Approval – Registered Voters

**2. Approval of Obama as President – This Week – All Adults**

Do you approve or disapprove of the way Barack Obama is handling his job as President?

|                       | Age        |            |           |            |            | Race       |            |           | Gender     |            | Education  |              |                  |
|-----------------------|------------|------------|-----------|------------|------------|------------|------------|-----------|------------|------------|------------|--------------|------------------|
|                       | Total      | 18-29      | 30-44     | 45-64      | 65+        | White      | Black      | Hispanic  | Male       | Female     | HS or less | Some college | College graduate |
| Strongly approve      | 20%        | 18%        | 19%       | 22%        | 21%        | 15%        | 36%        | 31%       | 21%        | 19%        | 22%        | 18%          | 19%              |
| Somewhat approve      | 28%        | 36%        | 33%       | 25%        | 13%        | 26%        | 46%        | 13%       | 28%        | 27%        | 26%        | 26%          | 34%              |
| Somewhat disapprove   | 14%        | 19%        | 12%       | 14%        | 10%        | 15%        | 9%         | 16%       | 11%        | 17%        | 14%        | 14%          | 14%              |
| Strongly disapprove   | 32%        | 17%        | 25%       | 36%        | 56%        | 39%        | 3%         | 26%       | 37%        | 27%        | 32%        | 34%          | 30%              |
| Not sure              | 6%         | 10%        | 11%       | 3%         | —          | 5%         | 7%         | 13%       | 2%         | 10%        | 6%         | 8%           | 4%               |
| Totals (Unweighted N) | 100% (997) | 100% (213) | 100% (85) | 100% (587) | 100% (112) | 100% (804) | 100% (105) | 100% (88) | 100% (494) | 100% (503) | 100% (358) | 100% (350)   | 100% (289)       |

|                       | Party ID   |            |            |            | Ideology   |            |            | Region     |            |            |            | Family Income |            |            |
|-----------------------|------------|------------|------------|------------|------------|------------|------------|------------|------------|------------|------------|---------------|------------|------------|
|                       | Total      | Dem        | Rep        | Ind        | Lib        | Mod        | Con        | North-east | Mid-west   | South      | West       | Under 40      | 40-100     | 100+       |
| Strongly approve      | 20%        | 40%        | 3%         | 12%        | 34%        | 18%        | 8%         | 14%        | 19%        | 22%        | 21%        | 24%           | 17%        | 30%        |
| Somewhat approve      | 28%        | 33%        | 17%        | 32%        | 35%        | 38%        | 9%         | 31%        | 30%        | 27%        | 24%        | 24%           | 27%        | 29%        |
| Somewhat disapprove   | 14%        | 11%        | 11%        | 18%        | 12%        | 18%        | 12%        | 19%        | 10%        | 15%        | 13%        | 16%           | 16%        | 8%         |
| Strongly disapprove   | 32%        | 14%        | 66%        | 31%        | 12%        | 21%        | 70%        | 25%        | 38%        | 30%        | 35%        | 28%           | 36%        | 28%        |
| Not sure              | 6%         | 2%         | 2%         | 7%         | 7%         | 5%         | 1%         | 11%        | 3%         | 6%         | 7%         | 8%            | 3%         | 5%         |
| Totals (Unweighted N) | 100% (997) | 100% (366) | 100% (239) | 100% (322) | 100% (258) | 100% (349) | 100% (350) | 100% (184) | 100% (227) | 100% (355) | 100% (231) | 100% (335)    | 100% (366) | 100% (101) |

### 3. Approval of U.S. Congress – Historical

Overall, do you approve or disapprove of the way that the United States Congress is handling its job?

#### All Adults

|                        | <b>Total<br/>Approve</b> | <b>Total<br/>Disapprove</b> | Strongly<br>Approve | Somewhat<br>Approve | Neutral | Somewhat<br>Disapprove | Strongly<br>Disapprove | Not<br>Sure |
|------------------------|--------------------------|-----------------------------|---------------------|---------------------|---------|------------------------|------------------------|-------------|
| April 6-8, 2013        | 9%                       | 67%                         | 1%                  | 8%                  | 15%     | 24%                    | 43%                    | 8%          |
| March 30-April 1, 2013 | 12%                      | 59%                         | 3%                  | 9%                  | 17%     | 24%                    | 35%                    | 12%         |
| March 23-25, 2013      | 15%                      | 61%                         | 2%                  | 13%                 | 15%     | 22%                    | 39%                    | 9%          |
| March 16-18, 2013      | 8%                       | 68%                         | 2%                  | 6%                  | 13%     | 22%                    | 46%                    | 11%         |
| March 9-11, 2013       | 12%                      | 64%                         | 2%                  | 10%                 | 16%     | 24%                    | 40%                    | 9%          |
| March 2-4, 2013        | 10%                      | 67%                         | 2%                  | 8%                  | 14%     | 18%                    | 49%                    | 9%          |
| February 23-25, 2013   | 10%                      | 60%                         | 2%                  | 8%                  | 18%     | 18%                    | 42%                    | 12%         |
| February 16-18, 2013   | 8%                       | 65%                         | 1%                  | 7%                  | 13%     | 22%                    | 43%                    | 13%         |
| February 9-11, 2013    | 7%                       | 61%                         | 1%                  | 6%                  | 18%     | 19%                    | 42%                    | 14%         |
| February 2-4, 2013     | 10%                      | 66%                         | 2%                  | 8%                  | 13%     | 25%                    | 41%                    | 11%         |
| One Year Ago           | 8%                       | 63%                         | 1%                  | 7%                  | 15%     | 25%                    | 38%                    | 14%         |

#### Registered Voters

|                        | <b>Total<br/>Approve</b> | <b>Total<br/>Disapprove</b> | Strongly<br>Approve | Somewhat<br>Approve | Neutral | Somewhat<br>Disapprove | Strongly<br>Disapprove | Not<br>Sure |
|------------------------|--------------------------|-----------------------------|---------------------|---------------------|---------|------------------------|------------------------|-------------|
| April 6-8, 2013        | 8%                       | 74%                         | 1%                  | 7%                  | 13%     | 25%                    | 49%                    | 4%          |
| March 30-April 1, 2013 | 8%                       | 67%                         | 1%                  | 7%                  | 16%     | 24%                    | 43%                    | 8%          |
| March 23-25, 2013      | 12%                      | 72%                         | 2%                  | 10%                 | 11%     | 24%                    | 48%                    | 6%          |
| March 16-18, 2013      | 7%                       | 75%                         | 1%                  | 6%                  | 12%     | 23%                    | 52%                    | 6%          |
| March 9-11, 2013       | 10%                      | 68%                         | 2%                  | 8%                  | 15%     | 23%                    | 45%                    | 7%          |
| March 2-4, 2013        | 9%                       | 74%                         | 2%                  | 7%                  | 11%     | 19%                    | 55%                    | 4%          |
| February 23-25, 2013   | 10%                      | 66%                         | 1%                  | 9%                  | 17%     | 19%                    | 47%                    | 6%          |
| February 16-18, 2013   | 8%                       | 73%                         | 1%                  | 7%                  | 11%     | 23%                    | 50%                    | 7%          |
| February 9-11, 2013    | 9%                       | 69%                         | 1%                  | 8%                  | 14%     | 23%                    | 46%                    | 7%          |
| February 2-4, 2013     | 8%                       | 76%                         | 2%                  | 6%                  | 12%     | 27%                    | 49%                    | 5%          |
| One Year Ago           | 8%                       | 70%                         | 1%                  | 7%                  | 13%     | 27%                    | 43%                    | 7%          |

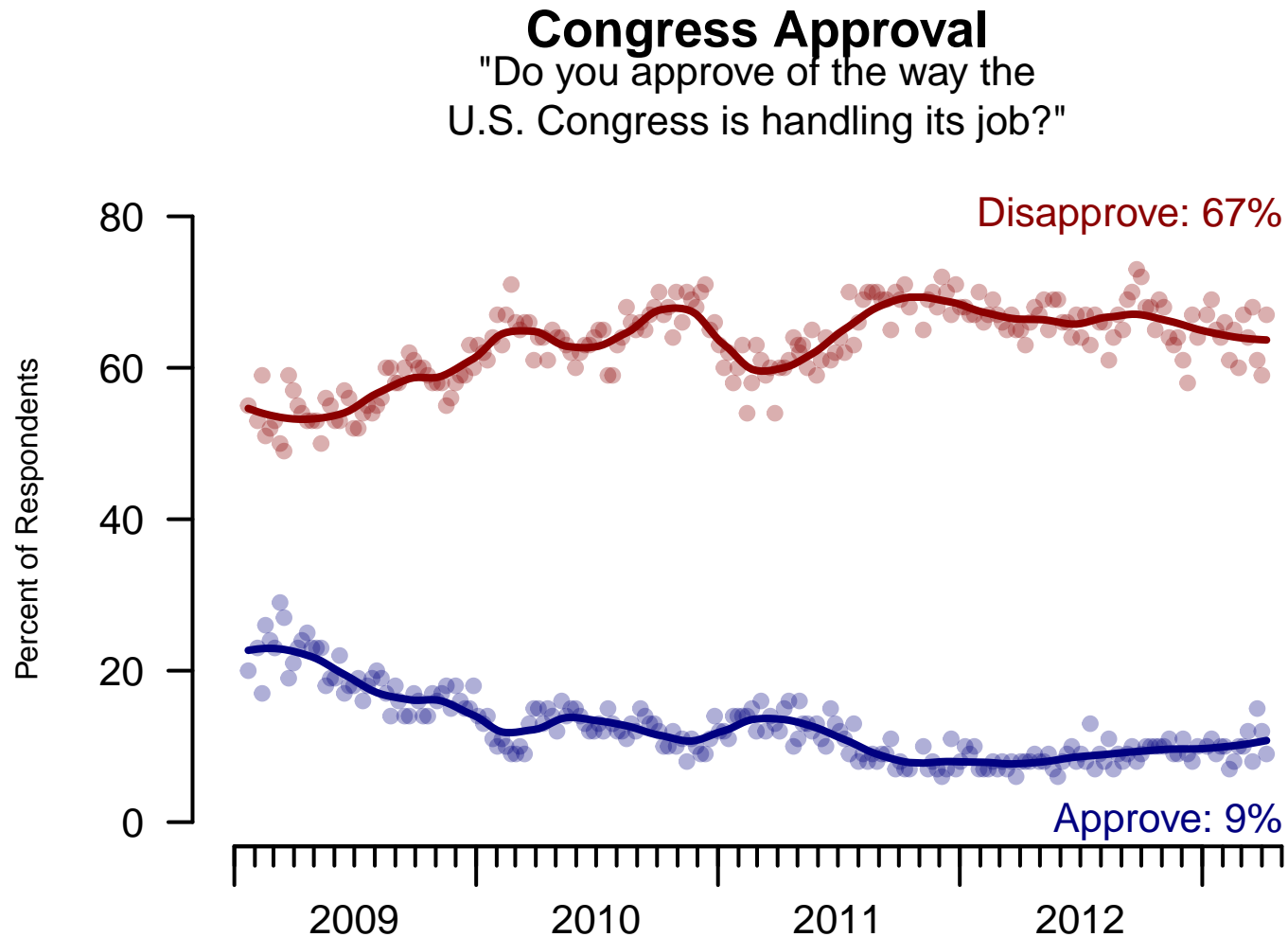


Figure 3: Congress Approval – All Adults

## Congress Approval

"Do you approve of the way the  
U.S. Congress is handling its job?"

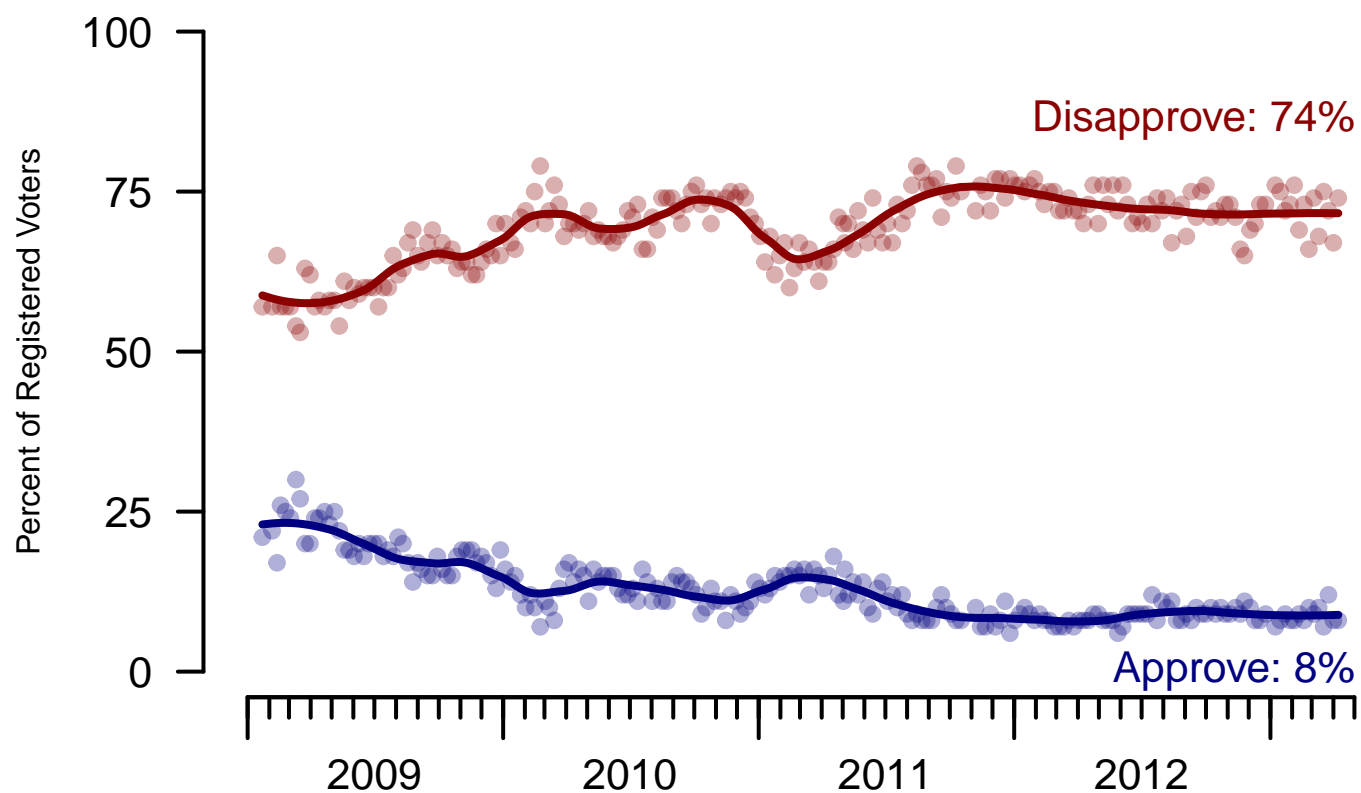


Figure 4: Congress Approval – Registered Voters



**4. Approval of U.S. Congress – This Week – All Adults**

Overall, do you approve or disapprove of the way that the United States Congress is handling its job?

|                                | Age        |            |           |            |            | Race       |            |           | Gender     |            | Education  |              |                  |
|--------------------------------|------------|------------|-----------|------------|------------|------------|------------|-----------|------------|------------|------------|--------------|------------------|
|                                | Total      | 18-29      | 30-44     | 45-64      | 65+        | White      | Black      | Hispanic  | Male       | Female     | HS or less | Some college | College graduate |
| Strongly approve               | 1%         | 2%         | —         | 1%         | 1%         | 1%         | 4%         | —         | 0%         | 2%         | 1%         | 2%           | 1%               |
| Somewhat approve               | 8%         | 8%         | 12%       | 6%         | 7%         | 6%         | 14%        | 18%       | 8%         | 8%         | 8%         | 5%           | 12%              |
| Neither approve nor disapprove | 15%        | 20%        | 15%       | 15%        | 10%        | 13%        | 33%        | 10%       | 14%        | 17%        | 22%        | 12%          | 9%               |
| Somewhat disapprove            | 24%        | 26%        | 20%       | 21%        | 29%        | 26%        | 14%        | 26%       | 22%        | 26%        | 21%        | 29%          | 22%              |
| Strongly disapprove            | 43%        | 34%        | 38%       | 52%        | 50%        | 48%        | 28%        | 36%       | 52%        | 35%        | 39%        | 44%          | 50%              |
| Not sure                       | 8%         | 10%        | 15%       | 4%         | 2%         | 7%         | 8%         | 11%       | 3%         | 12%        | 9%         | 8%           | 6%               |
| Totals (Unweighted N)          | 100% (995) | 100% (211) | 100% (85) | 100% (587) | 100% (112) | 100% (802) | 100% (105) | 100% (88) | 100% (492) | 100% (503) | 100% (359) | 100% (347)   | 100% (289)       |

|                                | Party ID   |            |            |            | Ideology   |            |            | Region     |            |            |            | Family Income |            |            |
|--------------------------------|------------|------------|------------|------------|------------|------------|------------|------------|------------|------------|------------|---------------|------------|------------|
|                                | Total      | Dem        | Rep        | Ind        | Lib        | Mod        | Con        | North-east | Mid-west   | South      | West       | Under 40      | 40-100     | 100+       |
| Strongly approve               | 1%         | 2%         | 0%         | 0%         | 1%         | 1%         | 0%         | 0%         | 0%         | 2%         | 1%         | 1%            | 1%         | 1%         |
| Somewhat approve               | 8%         | 10%        | 15%        | 5%         | 11%        | 4%         | 10%        | 7%         | 9%         | 6%         | 11%        | 8%            | 9%         | 13%        |
| Neither approve nor disapprove | 15%        | 17%        | 20%        | 11%        | 13%        | 23%        | 10%        | 12%        | 14%        | 21%        | 10%        | 18%           | 14%        | 3%         |
| Somewhat disapprove            | 24%        | 21%        | 30%        | 25%        | 19%        | 22%        | 34%        | 29%        | 24%        | 22%        | 23%        | 26%           | 27%        | 11%        |
| Strongly disapprove            | 43%        | 42%        | 34%        | 52%        | 48%        | 46%        | 44%        | 38%        | 46%        | 41%        | 50%        | 36%           | 46%        | 61%        |
| Not sure                       | 8%         | 8%         | 2%         | 7%         | 8%         | 4%         | 3%         | 15%        | 7%         | 7%         | 5%         | 10%           | 3%         | 12%        |
| Totals (Unweighted N)          | 100% (995) | 100% (365) | 100% (239) | 100% (321) | 100% (256) | 100% (350) | 100% (349) | 100% (184) | 100% (228) | 100% (352) | 100% (231) | 100% (334)    | 100% (366) | 100% (100) |

**5. Direction of country – Historical**

Would you say things in this country today are...

|                        | All Adults  |                 |          |
|------------------------|-------------|-----------------|----------|
|                        | Right Track | Wrong Direction | Not Sure |
| April 6-8, 2013        | 31%         | 54%             | 15%      |
| March 30-April 1, 2013 | 29%         | 53%             | 18%      |
| March 23-25, 2013      | 31%         | 53%             | 16%      |
| March 16-18, 2013      | 30%         | 56%             | 14%      |
| March 9-11, 2013       | 30%         | 57%             | 13%      |
| March 2-4, 2013        | 24%         | 61%             | 16%      |
| February 23-25, 2013   | 30%         | 54%             | 16%      |
| February 16-18, 2013   | 32%         | 53%             | 16%      |
| February 9-11, 2013    | 31%         | 56%             | 14%      |
| February 2-4, 2013     | 28%         | 56%             | 16%      |
| One Year Ago           | 26%         | 58%             | 16%      |

|                        | Registered Voters |                 |          |
|------------------------|-------------------|-----------------|----------|
|                        | Right Track       | Wrong Direction | Not Sure |
| April 6-8, 2013        | 31%               | 58%             | 11%      |
| March 30-April 1, 2013 | 32%               | 55%             | 13%      |
| March 23-25, 2013      | 32%               | 57%             | 12%      |
| March 16-18, 2013      | 32%               | 59%             | 9%       |
| March 9-11, 2013       | 30%               | 59%             | 11%      |
| March 2-4, 2013        | 26%               | 60%             | 13%      |
| February 23-25, 2013   | 32%               | 55%             | 13%      |
| February 16-18, 2013   | 35%               | 54%             | 11%      |
| February 9-11, 2013    | 35%               | 56%             | 10%      |
| February 2-4, 2013     | 33%               | 54%             | 13%      |
| One Year Ago           | 29%               | 58%             | 13%      |

## Direction of Country

"Would you say things in this country today are generally headed in the right direction or off on the wrong track?"

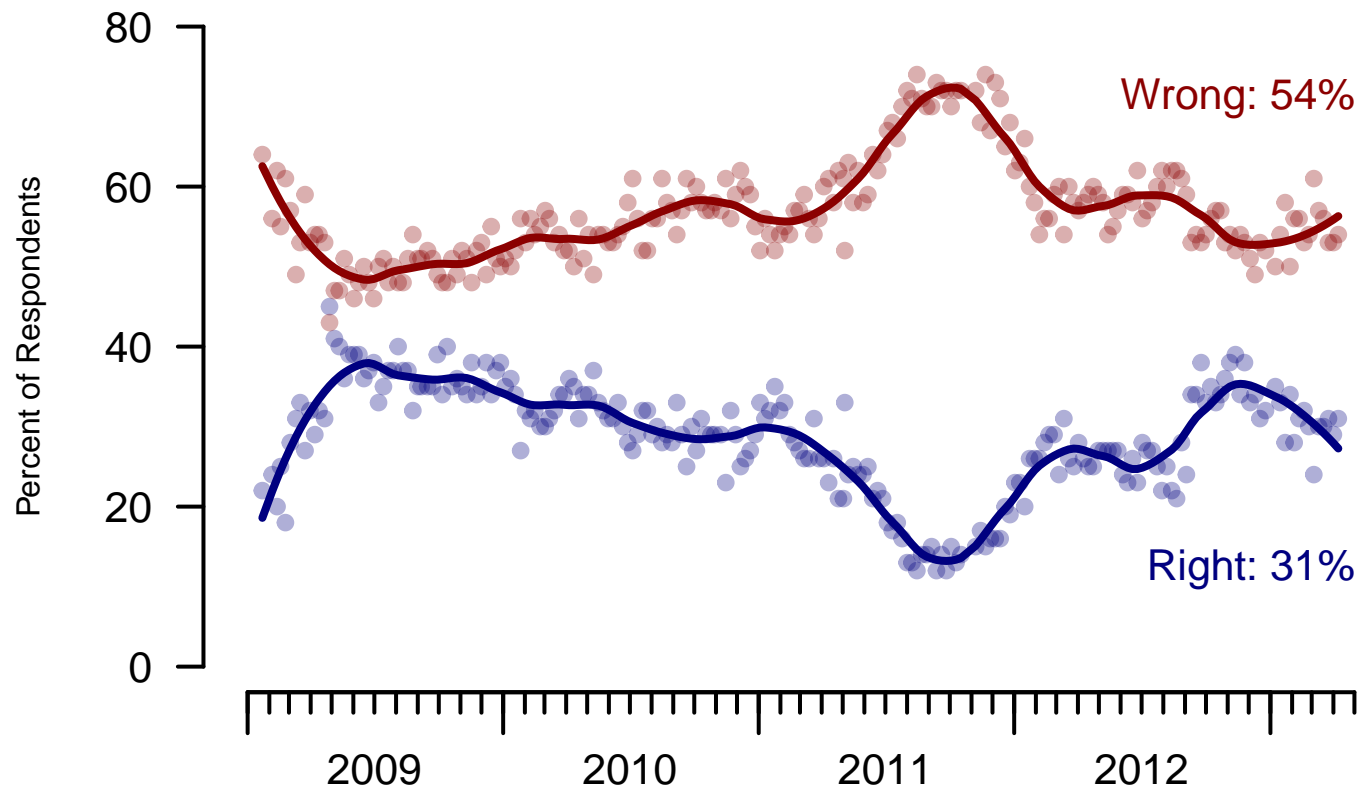


Figure 5: Direction of Country – All Adults

## Direction of Country

"Would you say things in this country today are generally headed in the right direction or off on the wrong track?"

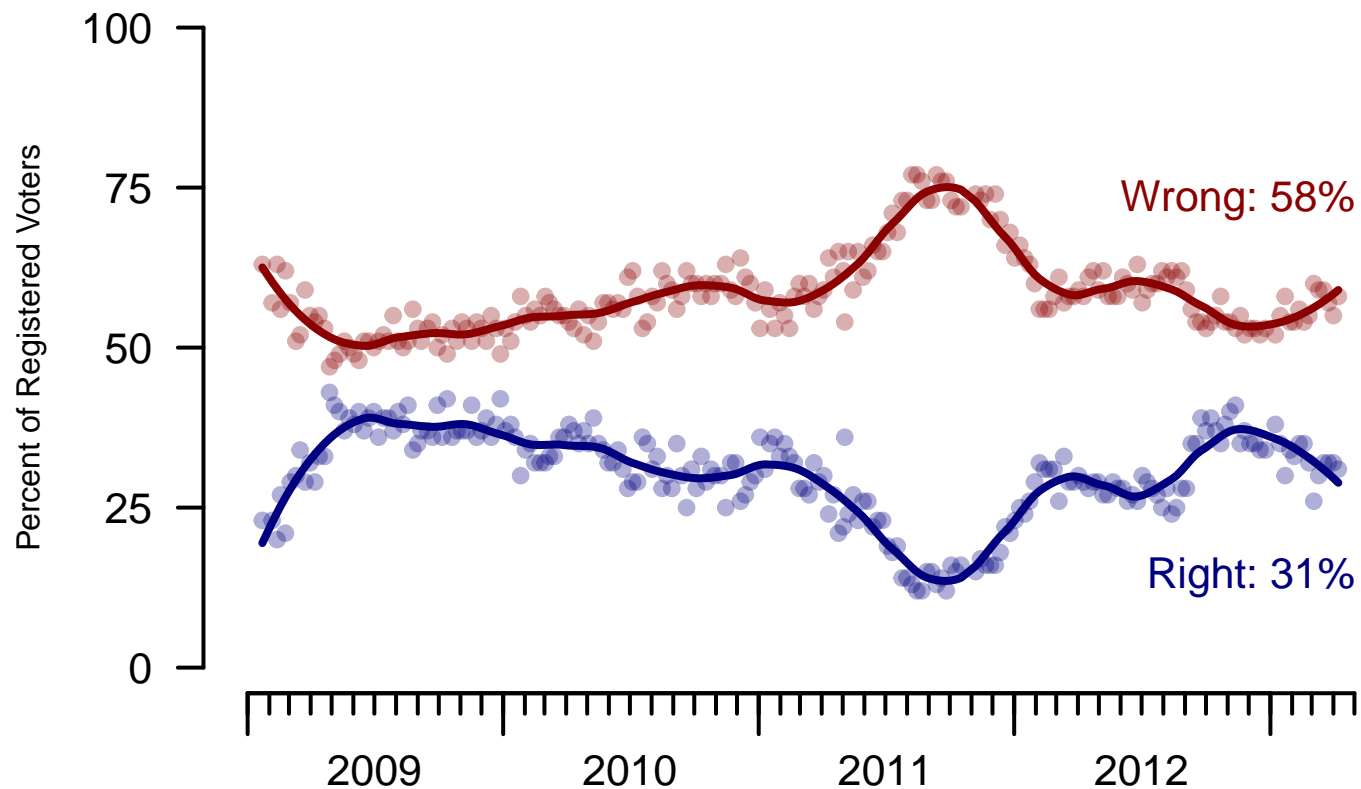


Figure 6: Direction of Country – Registered Voters

**6. Direction of Country – This Week – All Adults**

Would you say things in this country today are...

|   | Age          |            |           |            |            | Race       |            |           | Gender     |            | Education  |              |                  |
|---|--------------|------------|-----------|------------|------------|------------|------------|-----------|------------|------------|------------|--------------|------------------|
|   | Total        | 18-29      | 30-44     | 45-64      | 65+        | White      | Black      | Hispanic  | Male       | Female     | HS or less | Some college | College graduate |
| Generally headed in the right direction | 31%          | 33%        | 39%       | 31%        | 18%        | 25%        | 64%        | 31%       | 36%        | 26%        | 32%        | 26%          | 38%              |
| Off on the wrong track                  | 54%          | 50%        | 40%       | 58%        | 74%        | 62%        | 16%        | 55%       | 52%        | 56%        | 54%        | 59%          | 47%              |
| Not sure                                | 15%          | 17%        | 21%       | 11%        | 8%         | 13%        | 20%        | 14%       | 11%        | 18%        | 14%        | 15%          | 15%              |
| Totals (Unweighted N)                   | 100% (1,000) | 100% (215) | 100% (85) | 100% (588) | 100% (112) | 100% (807) | 100% (105) | 100% (88) | 100% (494) | 100% (506) | 100% (360) | 100% (350)   | 100% (290)       |

|   | Party ID     |            |            |            | Ideology   |            |            | Region     |            |            |            | Family Income |            |            |
|---|--------------|------------|------------|------------|------------|------------|------------|------------|------------|------------|------------|---------------|------------|------------|
|   | Total        | Dem        | Rep        | Ind        | Lib        | Mod        | Con        | North-east | Mid-west   | South      | West       | Under 40      | 40-100     | 100+       |
| Generally headed in the right direction | 31%          | 51%        | 19%        | 25%        | 51%        | 38%        | 6%         | 25%        | 33%        | 35%        | 27%        | 29%           | 27%        | 43%        |
| Off on the wrong track                  | 54%          | 37%        | 76%        | 59%        | 35%        | 46%        | 87%        | 49%        | 58%        | 52%        | 57%        | 55%           | 59%        | 46%        |
| Not sure                                | 15%          | 11%        | 6%         | 16%        | 13%        | 16%        | 8%         | 25%        | 9%         | 12%        | 16%        | 16%           | 14%        | 11%        |
| Totals (Unweighted N)                   | 100% (1,000) | 100% (368) | 100% (239) | 100% (323) | 100% (260) | 100% (350) | 100% (350) | 100% (184) | 100% (228) | 100% (356) | 100% (232) | 100% (336)    | 100% (367) | 100% (101) |

|  |   |
|--|---|
| <b>Sponsorship</b>                         | <i>The Economist</i>  |
| <b>Fieldwork</b>                           | YouGov  |
| <b>Interviewing Dates</b>                  | April 6-8, 2013   |
| <b>Target population</b>                   | U.S. citizens, aged 18 and over.  |
| <b>Sampling method</b>                     | Respondents were selected from YouGov's panel using sample matching. A random sample (stratified by age, gender, race, education, and region) was selected from the 2005–2007 American Community Study. Voter registration, turnout, religion, news interest, minor party identification, and non-placement on an ideology scale, were imputed from the 2008 Current Population Survey Registration and Voting Supplement and the Pew Religion in American Life Survey. Matching respondents were selected from the YouGov panel, an opt-in Internet panel. |
| <b>Weighting</b>                           | The sample was weighted using propensity scores based on age, gender, race, education, news interest, voter registration, and non-placement on an ideology scale. The weights range from 0.18 to 20.38, with a mean of one and a standard deviation of 1.2.   |
| <b>Number of respondents</b>               | 1,000   |
| <b>Margin of error</b>                     | ± 4.7% (adjusted for weighting)   |
| <b>Margin of error (Registered Voters)</b> | ± 5.2% (adjusted for weighting)   |
| <b>Survey mode</b>                         | Web-based interviews  |
| <b>Full results</b>                        | Available online at<br><a href="http://today.yougov.com/news/categories/economist/">http://today.yougov.com/news/categories/economist/</a> .  |