

Interviewing: August 14 - 16, 2016
Sample: 1300 Adults nationwide online
916 registered voters nationwide online



The Economist/YouGov Poll

Weekly Tracking

For immediate release

1. Approval of Obama as President – Historical

Do you approve or disapprove of the way Barack Obama is handling his job as President?

	All Adults						
	Total Approve	Total Disapprove	Strongly Approve	Somewhat Approve	Somewhat Disapprove	Strongly Disapprove	Not Sure
August 12-16, 2016	53%	46%	27%	26%	12%	34%	2%
August 5-9, 2016	50%	47%	26%	24%	14%	33%	3%
July 29-August 2, 2016	50%	44%	25%	25%	12%	32%	6%
July 23-25, 2016	47%	48%	22%	25%	14%	34%	4%
July 16-18, 2016	47%	46%	18%	29%	14%	32%	8%
July 9-11, 2016	47%	45%	22%	25%	13%	32%	7%
July 2-4, 2016	45%	48%	20%	25%	13%	35%	6%
June 25-27, 2016	47%	49%	21%	26%	15%	34%	4%
June 18-20, 2016	47%	48%	22%	25%	12%	36%	5%
June 4-6, 2016	46%	48%	22%	24%	16%	32%	6%
One Year Ago	44%	49%	19%	25%	14%	35%	7%

	Registered Voters						
	Total Approve	Total Disapprove	Strongly Approve	Somewhat Approve	Somewhat Disapprove	Strongly Disapprove	Not Sure
August 12-16, 2016	49%	50%	26%	23%	12%	38%	2%
August 5-9, 2016	49%	49%	27%	22%	11%	38%	2%
July 29-August 2, 2016	48%	49%	26%	22%	12%	37%	3%
July 23-25, 2016	48%	49%	23%	25%	12%	37%	2%
July 16-18, 2016	45%	49%	20%	25%	12%	37%	6%
July 9-11, 2016	46%	51%	23%	23%	12%	39%	3%
July 2-4, 2016	45%	51%	22%	23%	12%	39%	5%
June 25-27, 2016	43%	54%	20%	23%	14%	40%	2%
June 18-20, 2016	47%	49%	22%	25%	10%	39%	3%
June 4-6, 2016	46%	52%	22%	24%	13%	39%	3%
One Year Ago	43%	53%	21%	22%	13%	40%	4%

Obama Approval

"Do you approve or disapprove of the way Barack Obama is handling his job as President?"

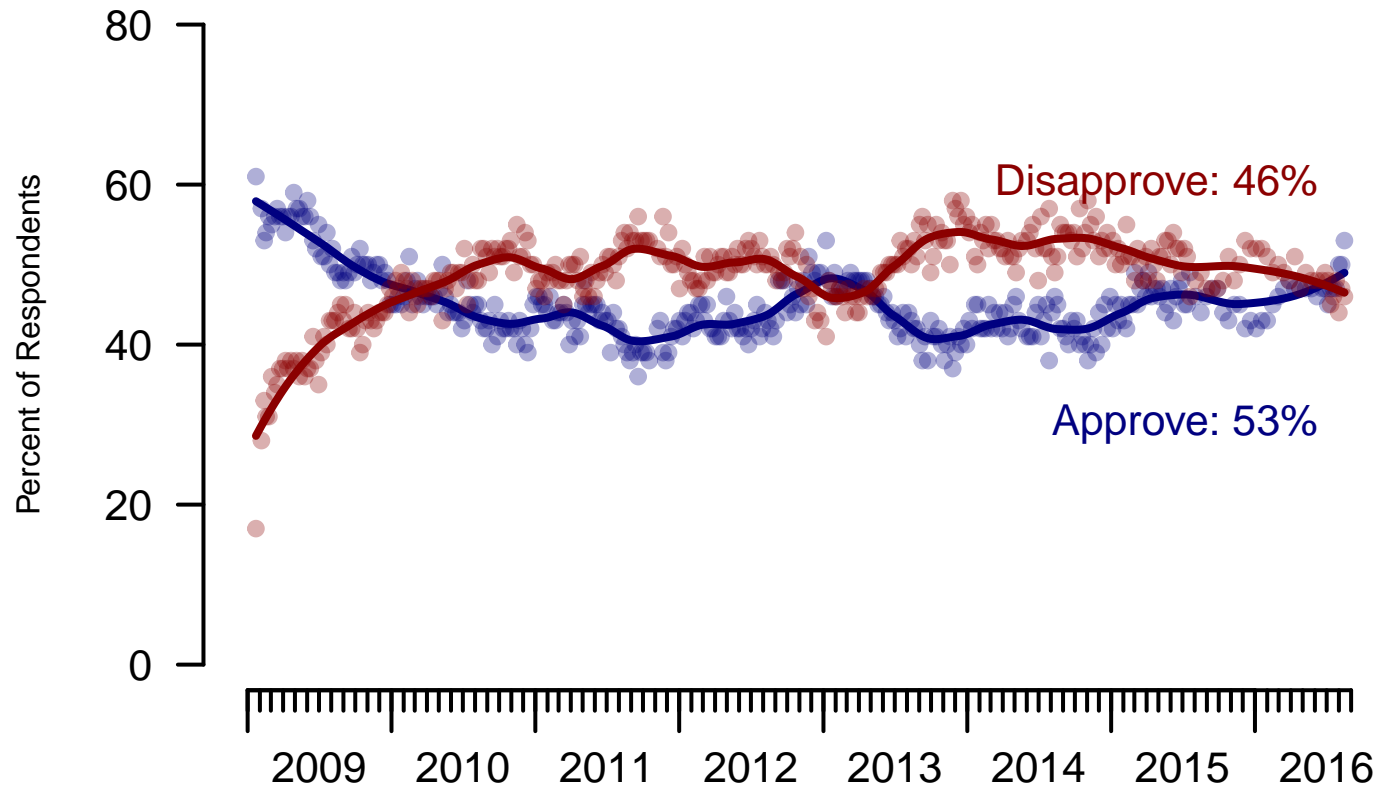


Figure 1: Obama Approval – All Adults

Obama Approval

"Do you approve or disapprove of the way Barack Obama is handling his job as President?"

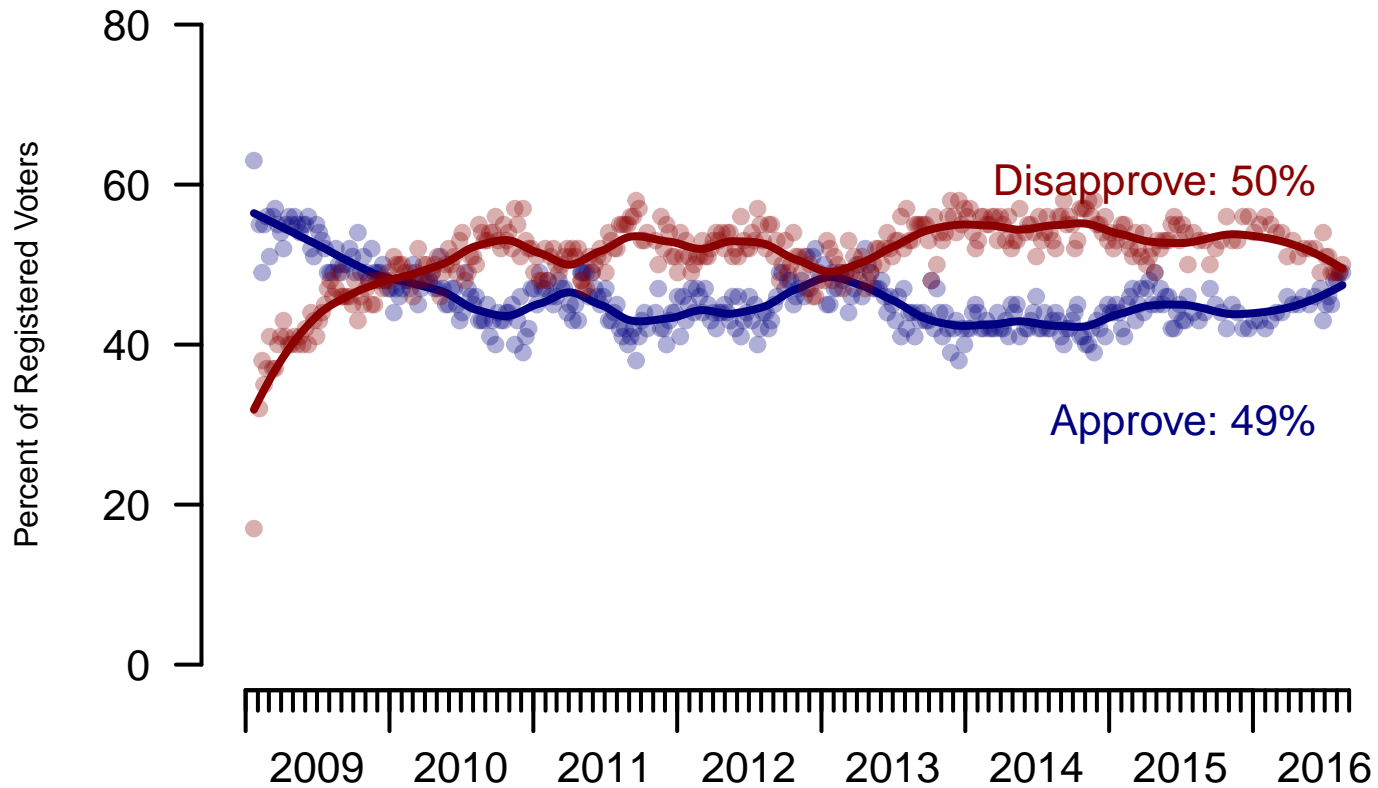


Figure 2: Obama Approval – Registered Voters

2. Approval of Obama as President – This Week – All Adults

Do you approve or disapprove of the way Barack Obama is handling his job as President?

	Age (4 category)					Race			Census Region			
	Total	Under 30	30-44	45-64	65+	White	Black	Hispanic	North-east	Mid-west	South	West
Strongly Approve	27%	31%	33%	23%	22%	20%	59%	32%	22%	26%	29%	25%
Somewhat Approve	26%	32%	27%	22%	24%	26%	22%	25%	32%	25%	20%	31%
Somewhat Disapprove	12%	14%	10%	11%	14%	14%	6%	8%	16%	8%	15%	8%
Strongly Disapprove	34%	20%	27%	41%	40%	38%	12%	29%	26%	38%	34%	34%
Not Sure	2%	4%	5%	2%	0%	2%	1%	6%	3%	3%	2%	2%
Totals (Unweighted N)	100% (1,300)	100% (246)	100% (335)	100% (521)	100% (198)	100% (1,024)	100% (151)	100% (125)	100% (249)	100% (306)	100% (474)	100% (271)

	Party ID			Ideology			Gender		Family Income (3 category)			Prefer not to say	
	Total	Dem	Ind	Rep	Lib	Mod	Con	Male	Female	Under 50	50-100		100+
Strongly Approve	27%	54%	18%	4%	54%	20%	15%	22%	31%	27%	25%	24%	30%
Somewhat Approve	26%	32%	30%	9%	34%	34%	10%	29%	22%	28%	26%	26%	14%
Somewhat Disapprove	12%	6%	12%	19%	6%	16%	11%	10%	14%	12%	12%	9%	14%
Strongly Disapprove	34%	6%	36%	68%	6%	25%	64%	37%	30%	30%	36%	41%	36%
Not Sure	2%	1%	4%	1%	1%	4%	1%	1%	3%	2%	1%	0%	7%
Totals (Unweighted N)	100% (1,300)	100% (470)	100% (511)	100% (319)	100% (370)	100% (555)	100% (375)	100% (622)	100% (678)	100% (674)	100% (326)	100% (158)	100% (142)

3. Approval of U.S. Congress – Historical

Overall, do you approve or disapprove of the way that the United States Congress is handling its job?

All Adults								
	Total Approve	Total Disapprove	Strongly Approve	Somewhat Approve	Neutral	Somewhat Disapprove	Strongly Disapprove	Not Sure
August 12-16, 2016	9%	65%	2%	7%	17%	25%	40%	9%
August 5-9, 2016	13%	62%	3%	10%	18%	26%	36%	7%
July 29-August 2, 2016	10%	65%	2%	8%	17%	27%	38%	8%
July 23-25, 2016	11%	58%	3%	8%	17%	21%	37%	14%
July 16-18, 2016	11%	62%	2%	9%	17%	25%	37%	11%
July 9-11, 2016	15%	61%	4%	11%	14%	22%	39%	11%
July 2-4, 2016	10%	64%	2%	8%	17%	27%	37%	9%
June 25-27, 2016	14%	59%	4%	10%	19%	21%	38%	8%
June 18-20, 2016	11%	64%	3%	8%	16%	23%	41%	9%
June 4-6, 2016	12%	62%	4%	8%	18%	24%	38%	8%
One Year Ago	13%	54%	3%	10%	19%	21%	33%	14%

Registered Voters								
	Total Approve	Total Disapprove	Strongly Approve	Somewhat Approve	Neutral	Somewhat Disapprove	Strongly Disapprove	Not Sure
August 12-16, 2016	10%	70%	2%	8%	13%	24%	46%	8%
August 5-9, 2016	11%	68%	2%	9%	15%	27%	41%	5%
July 29-August 2, 2016	10%	71%	2%	8%	15%	28%	43%	4%
July 23-25, 2016	10%	65%	3%	7%	16%	23%	42%	9%
July 16-18, 2016	10%	68%	1%	9%	14%	28%	40%	7%
July 9-11, 2016	12%	66%	3%	9%	13%	22%	44%	9%
July 2-4, 2016	11%	69%	2%	9%	16%	26%	43%	5%
June 25-27, 2016	11%	66%	2%	9%	17%	25%	41%	6%
June 18-20, 2016	9%	71%	2%	7%	15%	26%	45%	5%
June 4-6, 2016	9%	69%	2%	7%	16%	25%	44%	6%
One Year Ago	13%	62%	3%	10%	18%	24%	38%	7%

Congress Approval

"Do you approve of the way the
U.S. Congress is handling its job?"

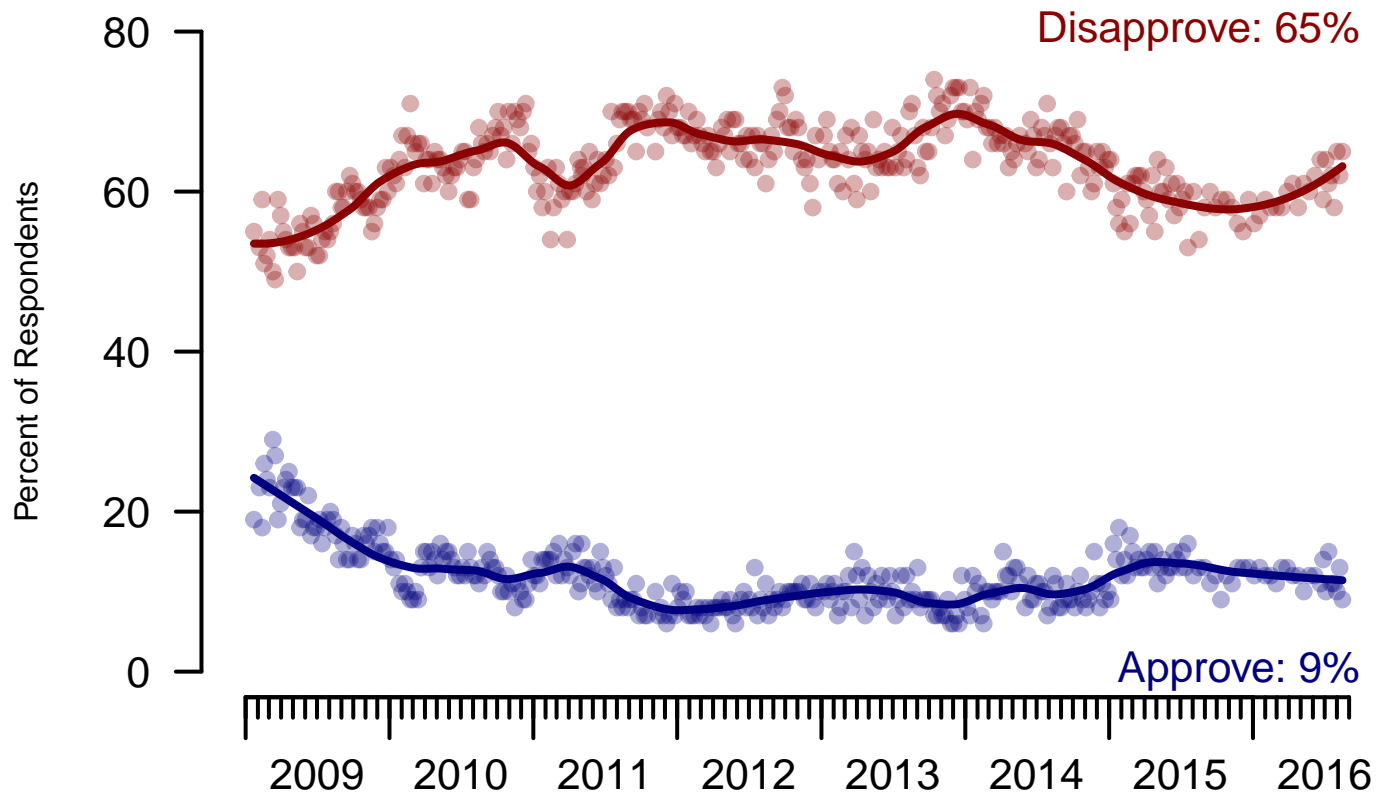


Figure 3: Congress Approval – All Adults

Congress Approval

"Do you approve of the way the
U.S. Congress is handling its job?"

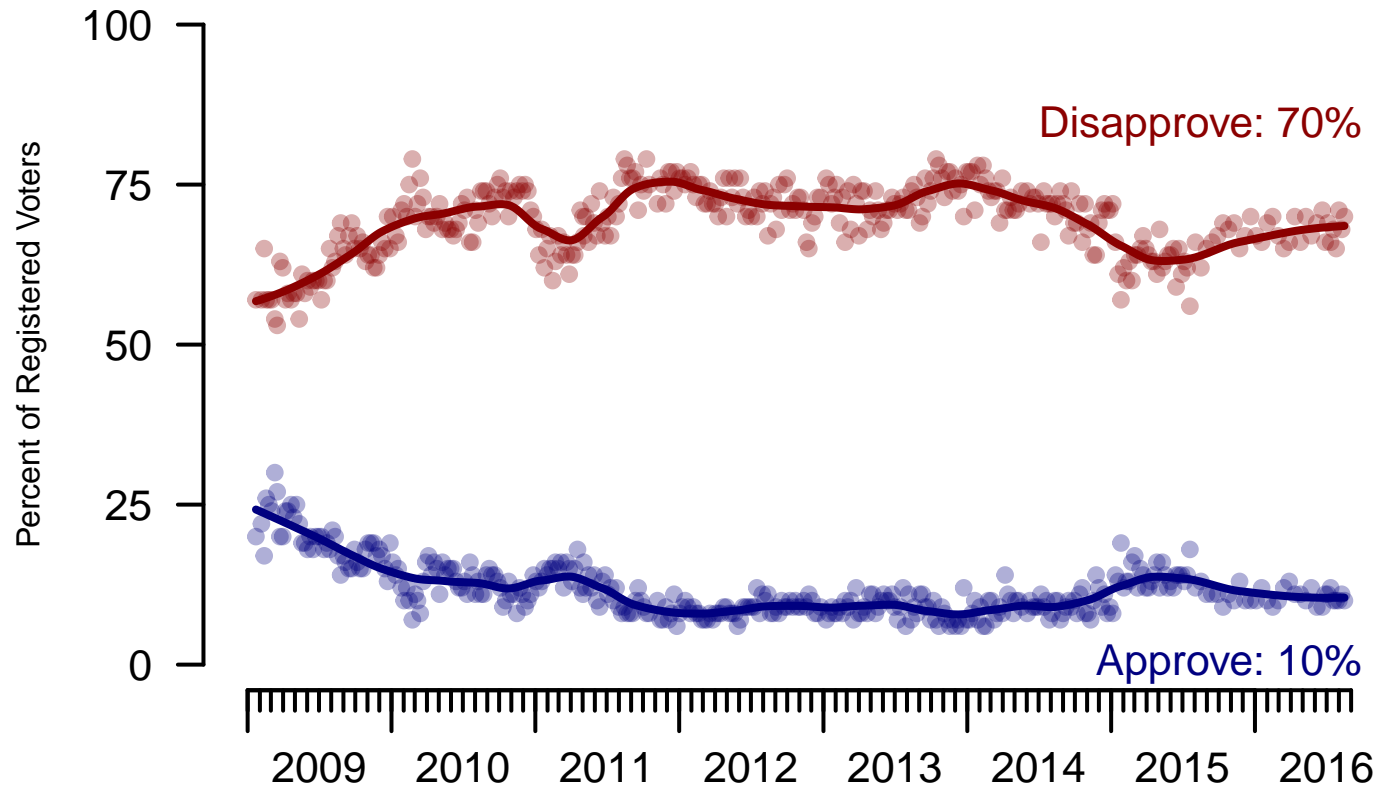


Figure 4: Congress Approval – Registered Voters

4. Approval of U.S. Congress – This Week – All Adults

Overall, do you approve or disapprove of the way that the United States Congress is handling its job?

	Age (4 category)					Race			Census Region			
	Total	Under 30	30-44	45-64	65+	White	Black	Hispanic	North-east	Mid-west	South	West
Strongly approve	2%	5%	4%	1%	1%	2%	6%	3%	1%	2%	2%	4%
Somewhat approve	7%	7%	9%	7%	4%	5%	12%	7%	5%	6%	7%	8%
Neither approve nor disapprove	17%	23%	22%	13%	11%	14%	21%	29%	25%	13%	16%	15%
Somewhat disapprove	25%	24%	31%	25%	21%	27%	13%	23%	17%	25%	29%	23%
Strongly disapprove	40%	27%	28%	44%	56%	44%	31%	28%	42%	42%	36%	44%
Not sure	9%	14%	6%	10%	6%	8%	17%	9%	11%	11%	9%	6%
Totals (Unweighted N)	100% (1,272)	100% (238)	100% (324)	100% (513)	100% (197)	100% (1,009)	100% (144)	100% (119)	100% (244)	100% (296)	100% (465)	100% (267)

	Party ID			Ideology			Gender		Family Income (3 category)				
	Total	Dem	Ind	Rep	Lib	Mod	Con	Male	Female	Under 50	50-100	100+	Prefer not to say
Strongly approve	2%	4%	0%	3%	3%	2%	2%	3%	2%	2%	3%	2%	3%
Somewhat approve	7%	9%	4%	8%	4%	6%	8%	7%	6%	8%	4%	8%	4%
Neither approve nor disapprove	17%	17%	16%	18%	12%	21%	16%	17%	16%	21%	14%	8%	11%
Somewhat disapprove	25%	20%	25%	33%	21%	21%	32%	27%	23%	23%	28%	32%	23%
Strongly disapprove	40%	39%	48%	28%	53%	41%	31%	42%	39%	36%	45%	47%	45%
Not sure	9%	11%	7%	10%	6%	9%	12%	3%	14%	11%	5%	3%	13%
Totals (Unweighted N)	100% (1,272)	100% (464)	100% (495)	100% (313)	100% (362)	100% (537)	100% (373)	100% (613)	100% (659)	100% (657)	100% (321)	100% (155)	100% (139)

5. Direction of country – Historical

Would you say things in this country today are...

	All Adults		
	Right Direction	Wrong Track	Not Sure
August 12-16, 2016	26%	65%	9%
August 5-9, 2016	29%	63%	8%
July 29-August 2, 2016	29%	61%	10%
July 23-25, 2016	24%	67%	9%
July 16-18, 2016	23%	65%	12%
July 9-11, 2016	23%	67%	9%
July 2-4, 2016	26%	64%	10%
June 25-27, 2016	26%	63%	11%
June 18-20, 2016	26%	63%	11%
June 4-6, 2016	25%	63%	13%
One Year Ago	30%	56%	14%

	Registered Voters		
	Right Direction	Wrong Track	Not Sure
August 12-16, 2016	27%	64%	9%
August 5-9, 2016	28%	66%	6%
July 29-August 2, 2016	27%	64%	9%
July 23-25, 2016	25%	67%	8%
July 16-18, 2016	22%	69%	8%
July 9-11, 2016	24%	70%	7%
July 2-4, 2016	27%	65%	8%
June 25-27, 2016	23%	69%	8%
June 18-20, 2016	28%	63%	9%
June 4-6, 2016	25%	67%	8%
One Year Ago	31%	61%	8%

Direction of Country

"Would you say things in this country today are generally headed in the right direction or off on the wrong track?"

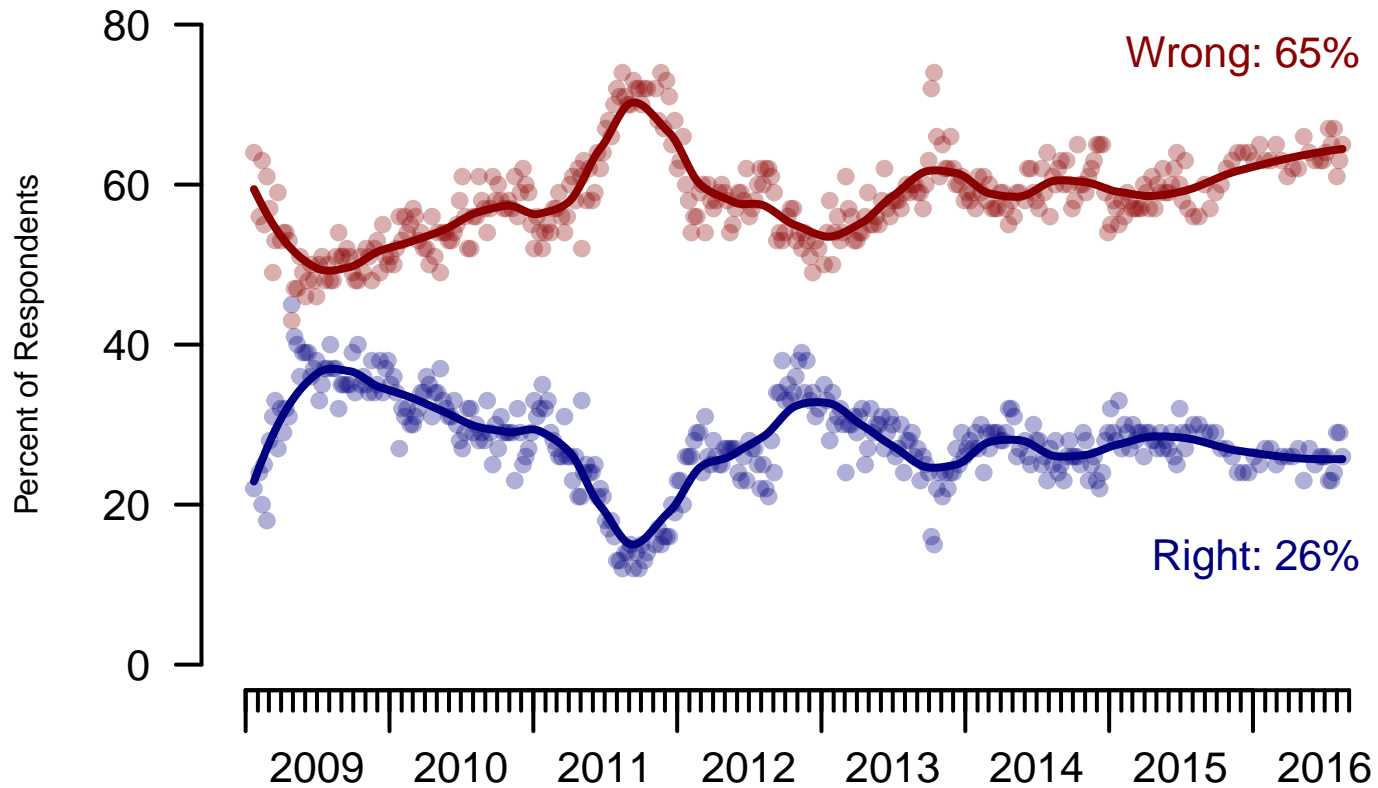


Figure 5: Direction of Country – All Adults

Direction of Country

"Would you say things in this country today are generally headed in the right direction or off on the wrong track?"

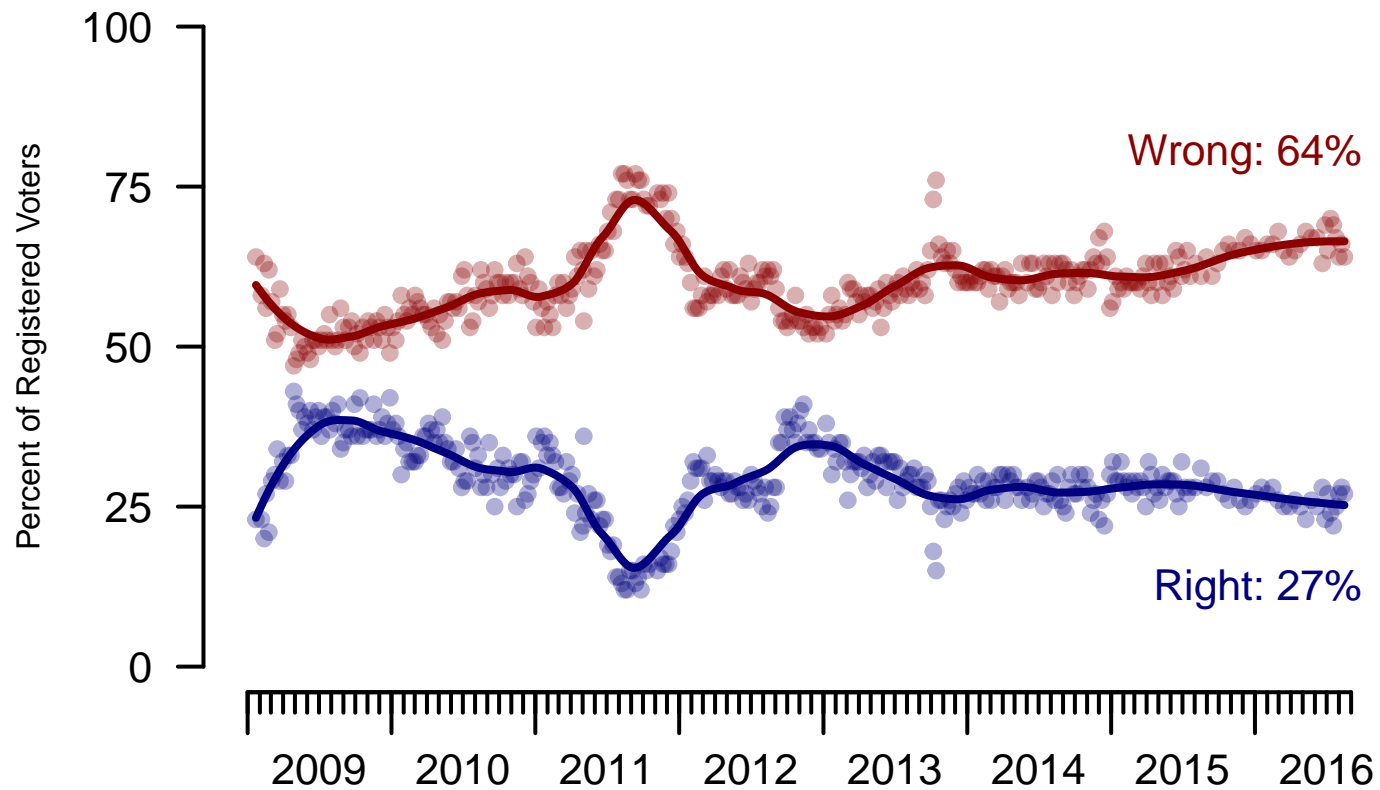


Figure 6: Direction of Country – Registered Voters

6. Direction of Country – This Week – All Adults

Would you say things in this country today are...

	Age (4 category)					Race			Census Region			
	Total	Under 30	30-44	45-64	65+	White	Black	Hispanic	North-east	Mid-west	South	West
Generally headed in the right direction	26%	31%	34%	25%	17%	22%	41%	37%	27%	24%	24%	31%
Off on the wrong track	65%	59%	55%	67%	75%	70%	45%	53%	60%	65%	69%	61%
Not sure	9%	10%	11%	7%	8%	8%	14%	10%	12%	11%	6%	8%
Totals (Unweighted N)	100% (1,300)	100% (246)	100% (335)	100% (521)	100% (198)	100% (1,024)	100% (151)	100% (125)	100% (249)	100% (306)	100% (474)	100% (271)

	Party ID			Ideology			Gender		Family Income (3 category)				
	Total	Dem	Ind	Rep	Lib	Mod	Con	Male	Female	Under 50	50-100	100+	Prefer not to say
Generally headed in the right direction	26%	48%	20%	8%	45%	28%	11%	26%	26%	26%	27%	32%	22%
Off on the wrong track	65%	43%	69%	89%	46%	60%	85%	66%	64%	65%	65%	62%	66%
Not sure	9%	10%	11%	3%	9%	12%	4%	8%	10%	9%	8%	6%	12%
Totals (Unweighted N)	100% (1,300)	100% (470)	100% (511)	100% (319)	100% (370)	100% (555)	100% (375)	100% (622)	100% (678)	100% (674)	100% (326)	100% (158)	100% (142)

Sponsorship	<i>The Economist</i>
Fieldwork	YouGov
Interviewing Dates	August 14 - 16, 2016
Target population	U.S. citizens, aged 18 and over.
Sampling method	Respondents were selected from YouGov's opt-in Internet panel using sample matching. A random sample (stratified by age, gender, race, education, and region) was selected from the 2010 American Community Study. Voter registration was imputed from the November 2010 Current Population Survey Registration and Voting Supplement. Religion, political interest, minor party identification, and non-placement on an ideology scale, were imputed from the 2008 Pew Religion in American Life Survey.
Weighting	The sample was weighted using propensity scores based on age, gender, race, education, news interest, voter registration, and non-placement on an ideology scale. The weights range from 0.1 to 6.12, with a mean of one and a standard deviation of 1.1.
Number of respondents	1300
Margin of error	± 4.1% (adjusted for weighting)
Margin of error (Registered Voters)	± 4.1% (adjusted for weighting)
Survey mode	Web-based interviews
Full results	Available online at http://today.yougov.com/news/categories/economist/ .