

Interviewing: September 17 - 19, 2017  
Sample: 1500 Adults nationwide online  
1121 registered voters nationwide online



# *The Economist*/YouGov Poll

## Weekly Tracking

For immediate release

**1. Presidential Job Approval – Historical**

Do you approve or disapprove of the way [President's name] is handling his job as President?

|                       | All Adults    |                  |                  |                  |                     |                     |          |
|-----------------------|---------------|------------------|------------------|------------------|---------------------|---------------------|----------|
|                       | Total Approve | Total Disapprove | Strongly Approve | Somewhat Approve | Somewhat Disapprove | Strongly Disapprove | Not Sure |
| September 15-19, 2017 | 39%           | 49%              | 19%              | 20%              | 13%                 | 36%                 | 12%      |
| September 8-12, 2017  | 39%           | 52%              | 21%              | 18%              | 13%                 | 39%                 | 8%       |
| September 1-5, 2017   | 41%           | 52%              | 21%              | 20%              | 13%                 | 39%                 | 8%       |
| August 26-28, 2017    | 38%           | 53%              | 18%              | 20%              | 12%                 | 41%                 | 10%      |
| August 19-21, 2017    | 39%           | 51%              | 18%              | 21%              | 12%                 | 39%                 | 9%       |
| August 12-14, 2017    | 39%           | 51%              | 19%              | 20%              | 12%                 | 39%                 | 10%      |
| August 5-7, 2017      | 37%           | 53%              | 18%              | 19%              | 14%                 | 39%                 | 11%      |
| July 29-31, 2017      | 37%           | 54%              | 16%              | 21%              | 13%                 | 41%                 | 9%       |
| July 22-24, 2017      | 39%           | 51%              | 20%              | 19%              | 12%                 | 39%                 | 10%      |
| July 15-17, 2017      | 38%           | 54%              | 20%              | 18%              | 13%                 | 41%                 | 9%       |
| One Year Ago          | 46%           | 49%              | 25%              | 21%              | 16%                 | 33%                 | 5%       |

|                       | Registered Voters |                  |                  |                  |                     |                     |          |
|-----------------------|-------------------|------------------|------------------|------------------|---------------------|---------------------|----------|
|                       | Total Approve     | Total Disapprove | Strongly Approve | Somewhat Approve | Somewhat Disapprove | Strongly Disapprove | Not Sure |
| September 15-19, 2017 | 43%               | 51%              | 23%              | 20%              | 11%                 | 40%                 | 7%       |
| September 8-12, 2017  | 42%               | 54%              | 24%              | 18%              | 11%                 | 43%                 | 4%       |
| September 1-5, 2017   | 42%               | 54%              | 23%              | 19%              | 13%                 | 41%                 | 5%       |
| August 26-28, 2017    | 40%               | 55%              | 21%              | 19%              | 10%                 | 45%                 | 5%       |
| August 19-21, 2017    | 40%               | 54%              | 20%              | 20%              | 11%                 | 43%                 | 5%       |
| August 12-14, 2017    | 42%               | 54%              | 22%              | 20%              | 12%                 | 42%                 | 5%       |
| August 5-7, 2017      | 40%               | 54%              | 21%              | 19%              | 12%                 | 42%                 | 7%       |
| July 29-31, 2017      | 39%               | 55%              | 19%              | 20%              | 11%                 | 44%                 | 5%       |
| July 22-24, 2017      | 41%               | 54%              | 23%              | 18%              | 11%                 | 43%                 | 5%       |
| July 15-17, 2017      | 39%               | 56%              | 22%              | 17%              | 12%                 | 44%                 | 6%       |
| One Year Ago          | 47%               | 51%              | 26%              | 21%              | 13%                 | 38%                 | 2%       |

## Presidential Job Approval

"Do you approve or disapprove of the way  
Donald Trump is handling his job as President?"

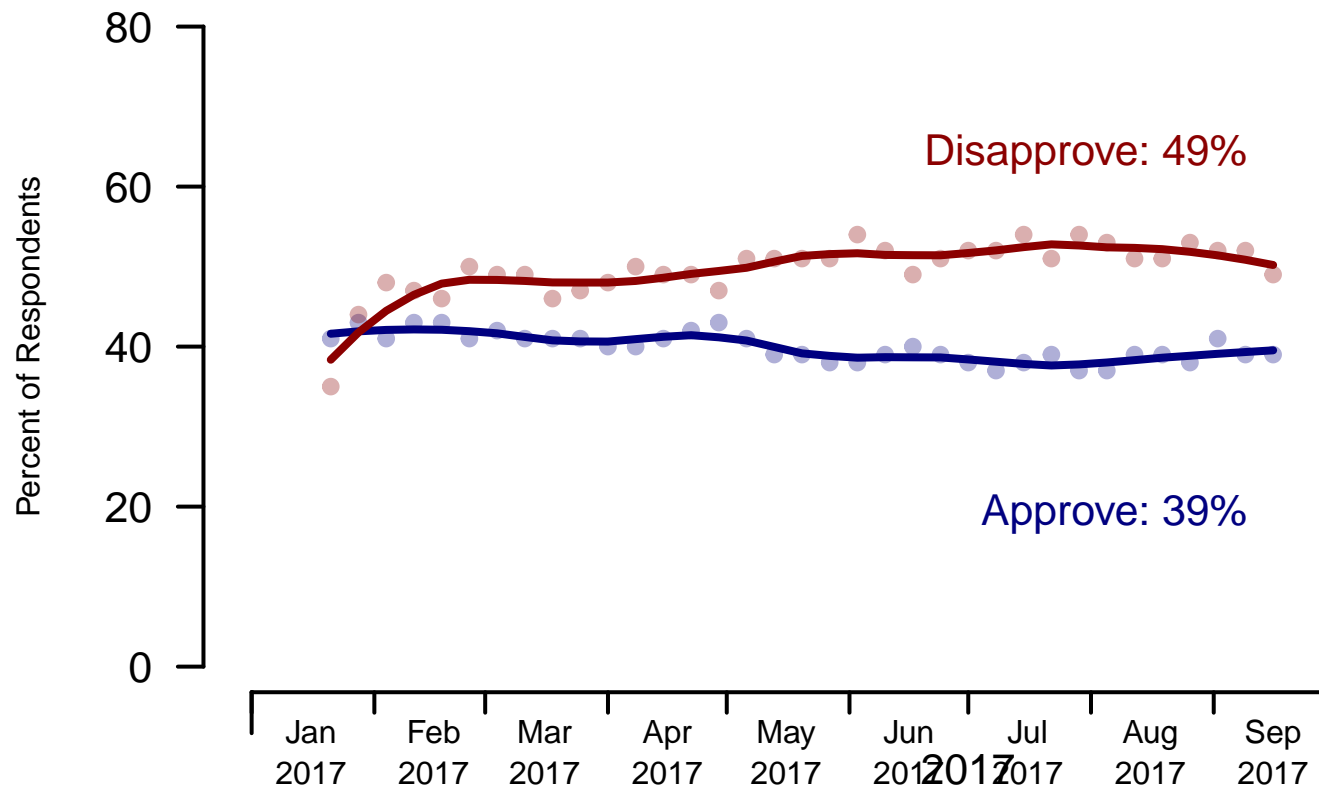


Figure 1: Trump Approval – All Adults

## Presidential Job Approval

"Do you approve or disapprove of the way  
Donald Trump is handling his job as President?"

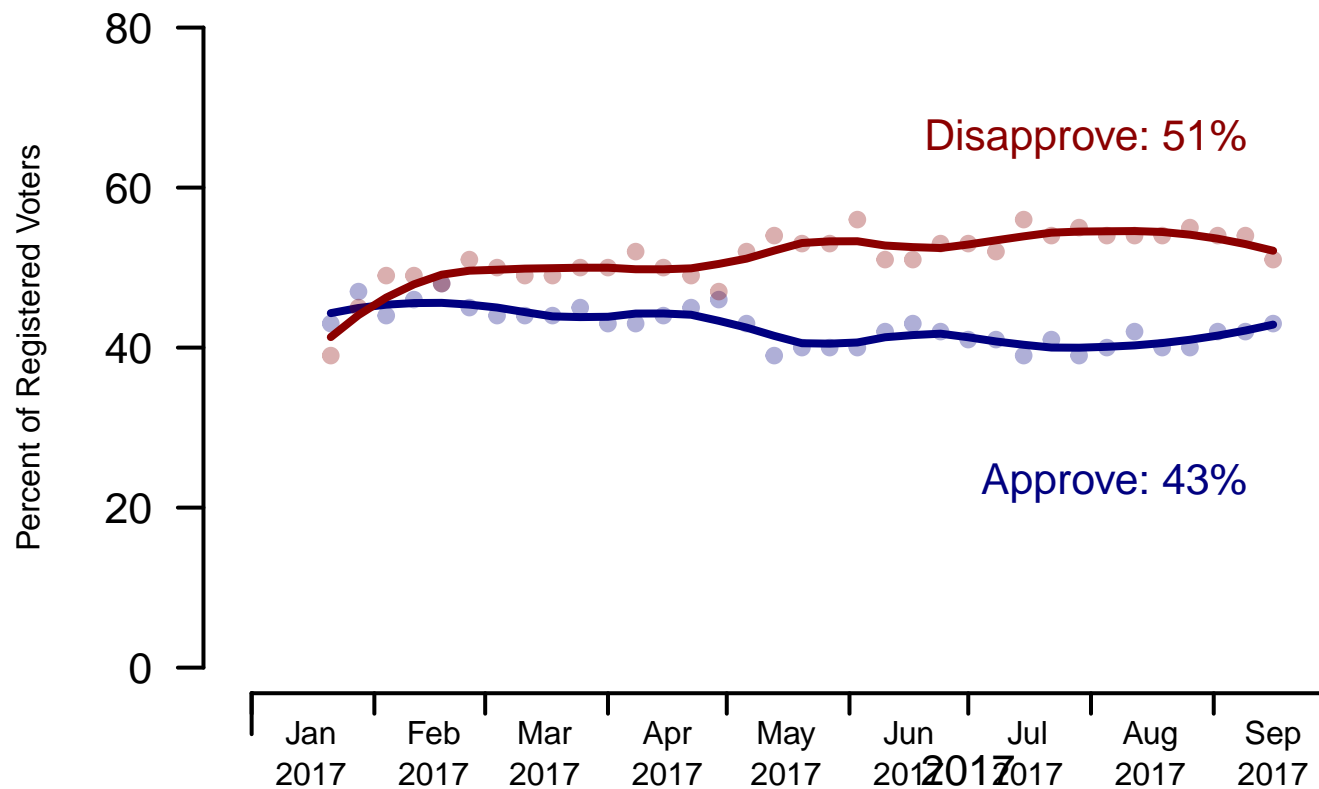


Figure 2: Trump Approval – Registered Voters

**2. President Trump Job Approval – This Week – All Adults**

Do you approve or disapprove of the way Donald Trump is handling his job as President?

|                       | Age (4 category) |            |            |            |            | Race         |            |            | Census Region |            |            |            |
|-----------------------|------------------|------------|------------|------------|------------|--------------|------------|------------|---------------|------------|------------|------------|
|                       | Total            | Under 30   | 30-44      | 45-64      | 65+        | White        | Black      | Hispanic   | North-east    | Mid-west   | South      | West       |
| Strongly approve      | 19%              | 8%         | 16%        | 24%        | 29%        | 24%          | 2%         | 8%         | 19%           | 23%        | 20%        | 16%        |
| Somewhat approve      | 20%              | 15%        | 19%        | 24%        | 19%        | 23%          | 10%        | 12%        | 21%           | 21%        | 20%        | 17%        |
| Somewhat disapprove   | 13%              | 16%        | 14%        | 11%        | 10%        | 11%          | 15%        | 20%        | 15%           | 14%        | 13%        | 10%        |
| Strongly disapprove   | 36%              | 39%        | 38%        | 33%        | 37%        | 33%          | 46%        | 43%        | 34%           | 34%        | 35%        | 41%        |
| Not sure              | 12%              | 23%        | 13%        | 8%         | 5%         | 8%           | 27%        | 17%        | 11%           | 8%         | 12%        | 16%        |
| Totals (Unweighted N) | 100% (1,500)     | 100% (299) | 100% (380) | 100% (556) | 100% (265) | 100% (1,197) | 100% (161) | 100% (142) | 100% (288)    | 100% (365) | 100% (532) | 100% (315) |

|                       | Party ID     |            |            |            | Ideology   |            |            | Gender     |            | Family Income (3 category) |            |            |                   |
|-----------------------|--------------|------------|------------|------------|------------|------------|------------|------------|------------|----------------------------|------------|------------|-------------------|
|                       | Total        | Dem        | Ind        | Rep        | Lib        | Mod        | Con        | Male       | Female     | Under 50                   | 50-100     | 100+       | Prefer not to say |
| Strongly approve      | 19%          | 3%         | 15%        | 48%        | 2%         | 10%        | 46%        | 21%        | 18%        | 18%                        | 20%        | 24%        | 21%               |
| Somewhat approve      | 20%          | 9%         | 18%        | 36%        | 5%         | 18%        | 32%        | 21%        | 19%        | 18%                        | 26%        | 14%        | 21%               |
| Somewhat disapprove   | 13%          | 14%        | 14%        | 10%        | 12%        | 15%        | 10%        | 13%        | 12%        | 15%                        | 9%         | 13%        | 10%               |
| Strongly disapprove   | 36%          | 70%        | 31%        | 5%         | 78%        | 35%        | 7%         | 36%        | 36%        | 34%                        | 39%        | 46%        | 32%               |
| Not sure              | 12%          | 4%         | 22%        | 2%         | 3%         | 22%        | 5%         | 9%         | 15%        | 15%                        | 6%         | 2%         | 16%               |
| Totals (Unweighted N) | 100% (1,500) | 100% (539) | 100% (608) | 100% (353) | 100% (452) | 100% (621) | 100% (427) | 100% (679) | 100% (821) | 100% (702)                 | 100% (404) | 100% (190) | 100% (204)        |

### 3. Approval of U.S. Congress – Historical

Overall, do you approve or disapprove of the way that the United States Congress is handling its job?

|                       | All Adults    |                  |                  |                  |         |                     |                     |          |
|-----------------------|---------------|------------------|------------------|------------------|---------|---------------------|---------------------|----------|
|                       | Total Approve | Total Disapprove | Strongly Approve | Somewhat Approve | Neutral | Somewhat Disapprove | Strongly Disapprove | Not Sure |
| September 15-19, 2017 | 10%           | 58%              | 2%               | 8%               | 16%     | 24%                 | 34%                 | 17%      |
| September 8-12, 2017  | 11%           | 58%              | 4%               | 7%               | 18%     | 21%                 | 37%                 | 14%      |
| September 1-5, 2017   | 11%           | 57%              | 2%               | 9%               | 17%     | 21%                 | 36%                 | 15%      |
| August 26-28, 2017    | 11%           | 59%              | 3%               | 8%               | 15%     | 22%                 | 37%                 | 15%      |
| August 19-21, 2017    | 12%           | 60%              | 3%               | 9%               | 15%     | 21%                 | 39%                 | 13%      |
| August 12-14, 2017    | 10%           | 62%              | 3%               | 7%               | 14%     | 22%                 | 40%                 | 15%      |
| August 5-7, 2017      | 11%           | 58%              | 2%               | 9%               | 15%     | 22%                 | 36%                 | 16%      |
| July 29-31, 2017      | 10%           | 62%              | 3%               | 7%               | 13%     | 23%                 | 39%                 | 16%      |
| July 22-24, 2017      | 12%           | 58%              | 4%               | 8%               | 18%     | 23%                 | 35%                 | 12%      |
| July 15-17, 2017      | 12%           | 57%              | 3%               | 9%               | 17%     | 21%                 | 36%                 | 15%      |
| One Year Ago          | 10%           | 63%              | 3%               | 7%               | 18%     | 24%                 | 39%                 | 9%       |

|                       | Registered Voters |                  |                  |                  |         |                     |                     |          |
|-----------------------|-------------------|------------------|------------------|------------------|---------|---------------------|---------------------|----------|
|                       | Total Approve     | Total Disapprove | Strongly Approve | Somewhat Approve | Neutral | Somewhat Disapprove | Strongly Disapprove | Not Sure |
| September 15-19, 2017 | 9%                | 66%              | 2%               | 7%               | 15%     | 27%                 | 39%                 | 10%      |
| September 8-12, 2017  | 10%               | 65%              | 3%               | 7%               | 17%     | 23%                 | 42%                 | 7%       |
| September 1-5, 2017   | 10%               | 63%              | 2%               | 8%               | 16%     | 23%                 | 40%                 | 10%      |
| August 26-28, 2017    | 11%               | 69%              | 3%               | 8%               | 12%     | 26%                 | 43%                 | 8%       |
| August 19-21, 2017    | 11%               | 67%              | 4%               | 7%               | 14%     | 24%                 | 43%                 | 9%       |
| August 12-14, 2017    | 8%                | 68%              | 3%               | 5%               | 13%     | 24%                 | 44%                 | 10%      |
| August 5-7, 2017      | 11%               | 67%              | 3%               | 8%               | 13%     | 24%                 | 43%                 | 10%      |
| July 29-31, 2017      | 9%                | 68%              | 3%               | 6%               | 12%     | 24%                 | 44%                 | 11%      |
| July 22-24, 2017      | 11%               | 67%              | 3%               | 8%               | 15%     | 26%                 | 41%                 | 7%       |
| July 15-17, 2017      | 10%               | 64%              | 3%               | 7%               | 15%     | 23%                 | 41%                 | 11%      |
| One Year Ago          | 11%               | 70%              | 3%               | 8%               | 15%     | 25%                 | 45%                 | 4%       |

## Congress Approval

"Do you approve of the way the  
U.S. Congress is handling its job?"

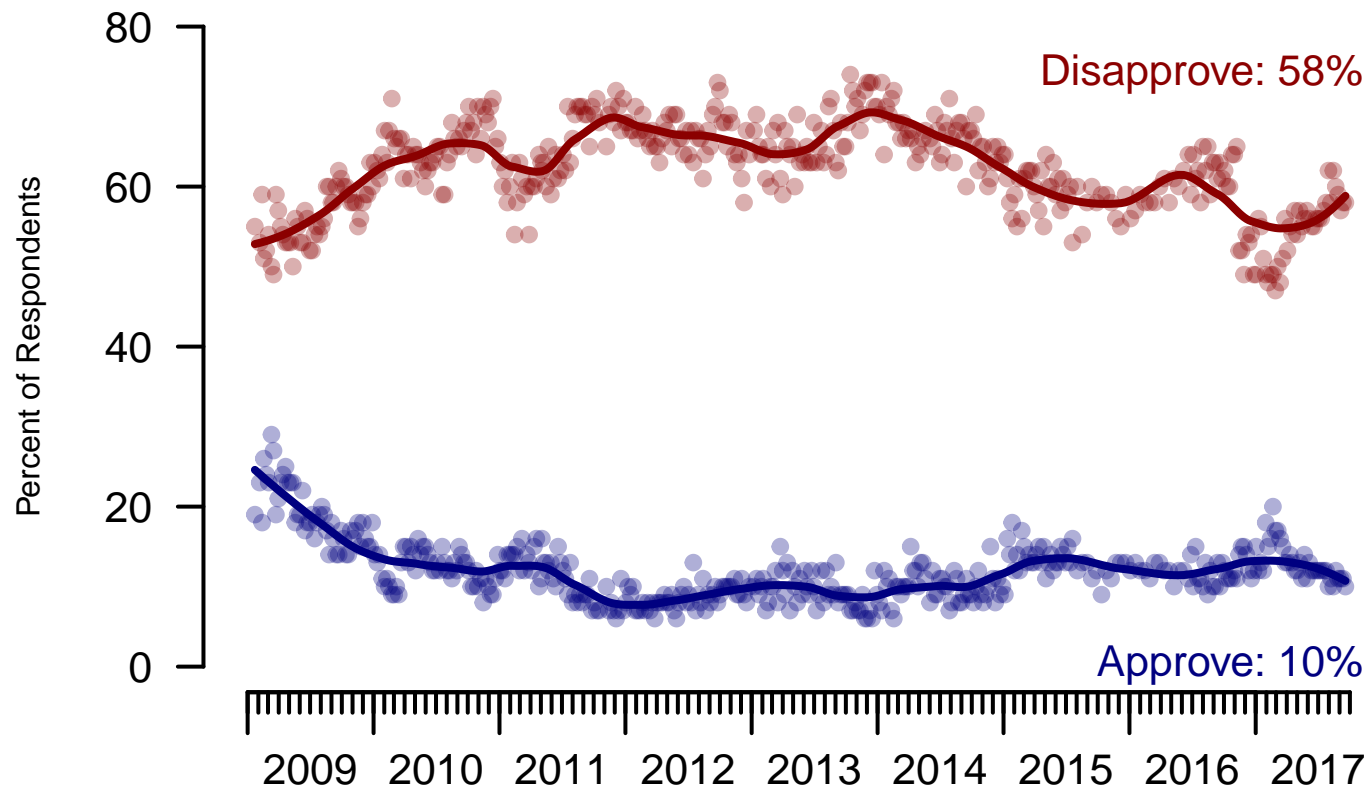


Figure 3: Congress Approval – All Adults

## Congress Approval

"Do you approve of the way the  
U.S. Congress is handling its job?"

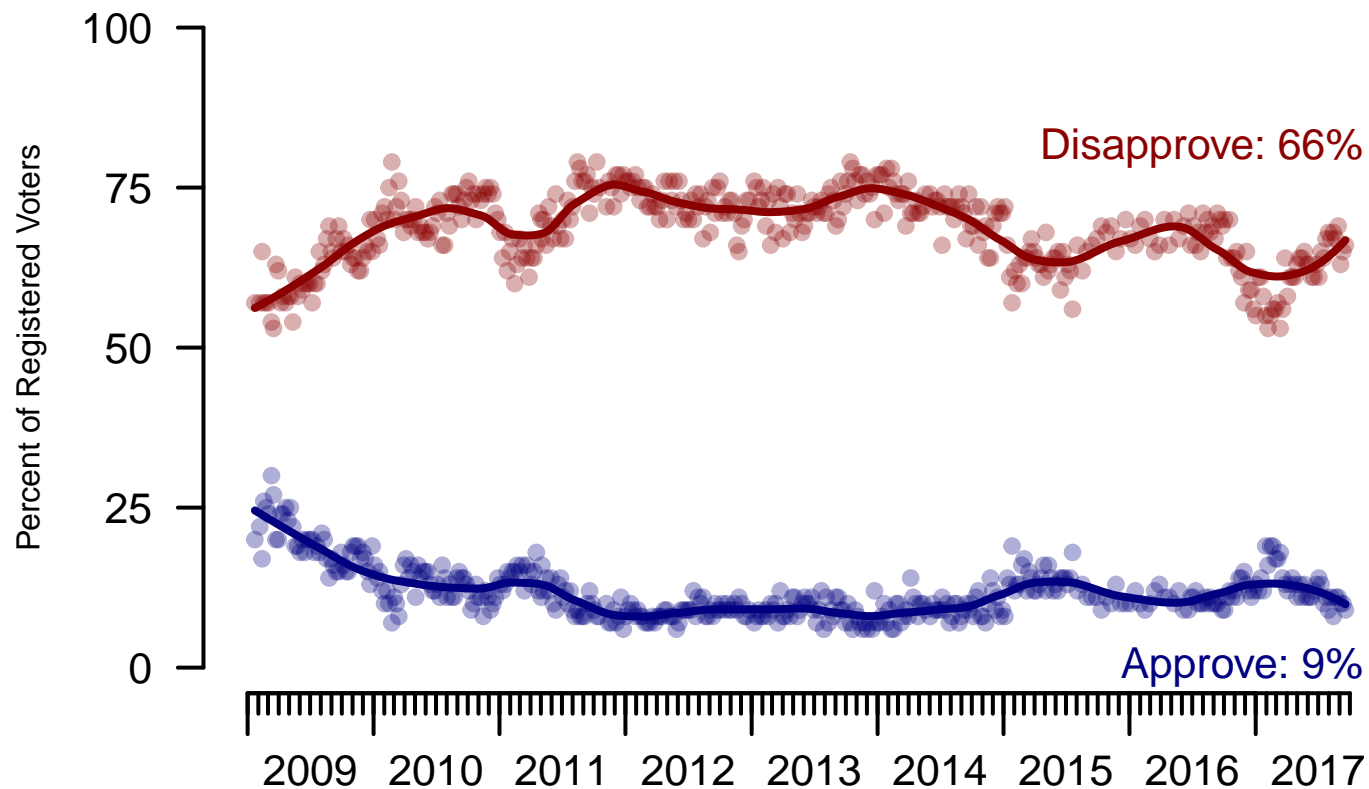


Figure 4: Congress Approval – Registered Voters



**4. Approval of U.S. Congress – This Week – All Adults**

Overall, do you approve or disapprove of the way that the United States Congress is handling its job?

|                                | Age (4 category) |            |            |            |            | Race         |            |            | Census Region |            |            |            |
|--------------------------------|------------------|------------|------------|------------|------------|--------------|------------|------------|---------------|------------|------------|------------|
|                                | Total            | Under 30   | 30-44      | 45-64      | 65+        | White        | Black      | Hispanic   | North-east    | Mid-west   | South      | West       |
| Strongly approve               | 2%               | 2%         | 4%         | 2%         | 1%         | 2%           | 3%         | 2%         | 2%            | 2%         | 2%         | 2%         |
| Somewhat approve               | 8%               | 8%         | 9%         | 8%         | 5%         | 8%           | 6%         | 5%         | 11%           | 7%         | 7%         | 7%         |
| Neither approve nor disapprove | 16%              | 19%        | 18%        | 17%        | 9%         | 15%          | 17%        | 19%        | 19%           | 18%        | 17%        | 9%         |
| Somewhat disapprove            | 24%              | 19%        | 22%        | 23%        | 31%        | 25%          | 20%        | 19%        | 26%           | 23%        | 21%        | 26%        |
| Strongly disapprove            | 34%              | 24%        | 29%        | 37%        | 45%        | 35%          | 29%        | 32%        | 25%           | 38%        | 33%        | 39%        |
| Not sure                       | 17%              | 28%        | 18%        | 13%        | 9%         | 14%          | 25%        | 22%        | 17%           | 12%        | 20%        | 17%        |
| Totals (Unweighted N)          | 100% (1,487)     | 100% (294) | 100% (377) | 100% (554) | 100% (262) | 100% (1,185) | 100% (160) | 100% (142) | 100% (282)    | 100% (363) | 100% (528) | 100% (314) |

|                                | Party ID     |            |            |            | Ideology   |            |            | Gender     |            | Family Income (3 category) |            |            |                   |
|--------------------------------|--------------|------------|------------|------------|------------|------------|------------|------------|------------|----------------------------|------------|------------|-------------------|
|                                | Total        | Dem        | Ind        | Rep        | Lib        | Mod        | Con        | Male       | Female     | Under 50                   | 50-100     | 100+       | Prefer not to say |
| Strongly approve               | 2%           | 2%         | 1%         | 5%         | 0%         | 2%         | 4%         | 3%         | 2%         | 2%                         | 2%         | 2%         | 2%                |
| Somewhat approve               | 8%           | 5%         | 5%         | 16%        | 5%         | 6%         | 12%        | 10%        | 6%         | 7%                         | 10%        | 8%         | 7%                |
| Neither approve nor disapprove | 16%          | 16%        | 14%        | 18%        | 11%        | 20%        | 14%        | 15%        | 17%        | 17%                        | 17%        | 8%         | 15%               |
| Somewhat disapprove            | 24%          | 26%        | 21%        | 25%        | 26%        | 18%        | 31%        | 25%        | 23%        | 24%                        | 24%        | 24%        | 22%               |
| Strongly disapprove            | 34%          | 40%        | 35%        | 24%        | 50%        | 28%        | 31%        | 39%        | 29%        | 29%                        | 37%        | 54%        | 28%               |
| Not sure                       | 17%          | 10%        | 24%        | 11%        | 8%         | 27%        | 9%         | 10%        | 24%        | 20%                        | 10%        | 5%         | 26%               |
| Totals (Unweighted N)          | 100% (1,487) | 100% (532) | 100% (605) | 100% (350) | 100% (447) | 100% (618) | 100% (422) | 100% (674) | 100% (813) | 100% (695)                 | 100% (403) | 100% (189) | 100% (200)        |

**5. Direction of country – Historical**

Would you say things in this country today are...

|                       | All Adults      |             |          |
|-----------------------|-----------------|-------------|----------|
|                       | Right Direction | Wrong Track | Not Sure |
| September 15-19, 2017 | 30%             | 56%         | 14%      |
| September 8-12, 2017  | 28%             | 56%         | 16%      |
| September 1-5, 2017   | 31%             | 55%         | 14%      |
| August 26-28, 2017    | 27%             | 60%         | 13%      |
| August 19-21, 2017    | 25%             | 59%         | 16%      |
| August 12-14, 2017    | 27%             | 59%         | 14%      |
| August 5-7, 2017      | 30%             | 54%         | 16%      |
| July 29-31, 2017      | 29%             | 54%         | 17%      |
| July 22-24, 2017      | 31%             | 55%         | 14%      |
| July 15-17, 2017      | 31%             | 56%         | 13%      |
| One Year Ago          | 29%             | 61%         | 10%      |

|                       | Registered Voters |             |          |
|-----------------------|-------------------|-------------|----------|
|                       | Right Direction   | Wrong Track | Not Sure |
| September 15-19, 2017 | 31%               | 59%         | 10%      |
| September 8-12, 2017  | 31%               | 57%         | 12%      |
| September 1-5, 2017   | 31%               | 57%         | 12%      |
| August 26-28, 2017    | 28%               | 62%         | 10%      |
| August 19-21, 2017    | 26%               | 62%         | 12%      |
| August 12-14, 2017    | 28%               | 61%         | 11%      |
| August 5-7, 2017      | 31%               | 57%         | 12%      |
| July 29-31, 2017      | 30%               | 57%         | 13%      |
| July 22-24, 2017      | 32%               | 57%         | 11%      |
| July 15-17, 2017      | 31%               | 58%         | 11%      |
| One Year Ago          | 30%               | 63%         | 7%       |

## Direction of Country

"Would you say things in this country today are generally headed in the right direction or off on the wrong track?"

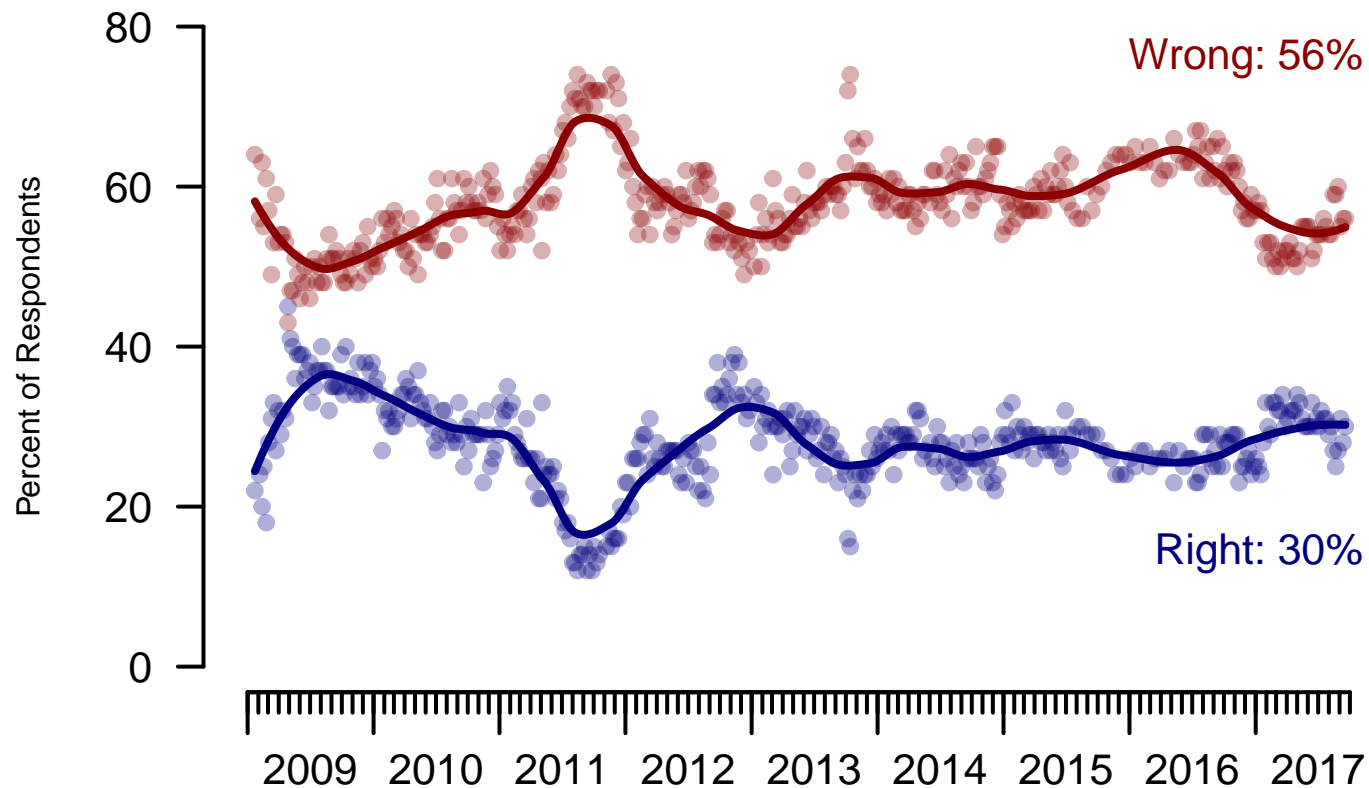


Figure 5: Direction of Country – All Adults

## Direction of Country

"Would you say things in this country today are generally headed in the right direction or off on the wrong track?"

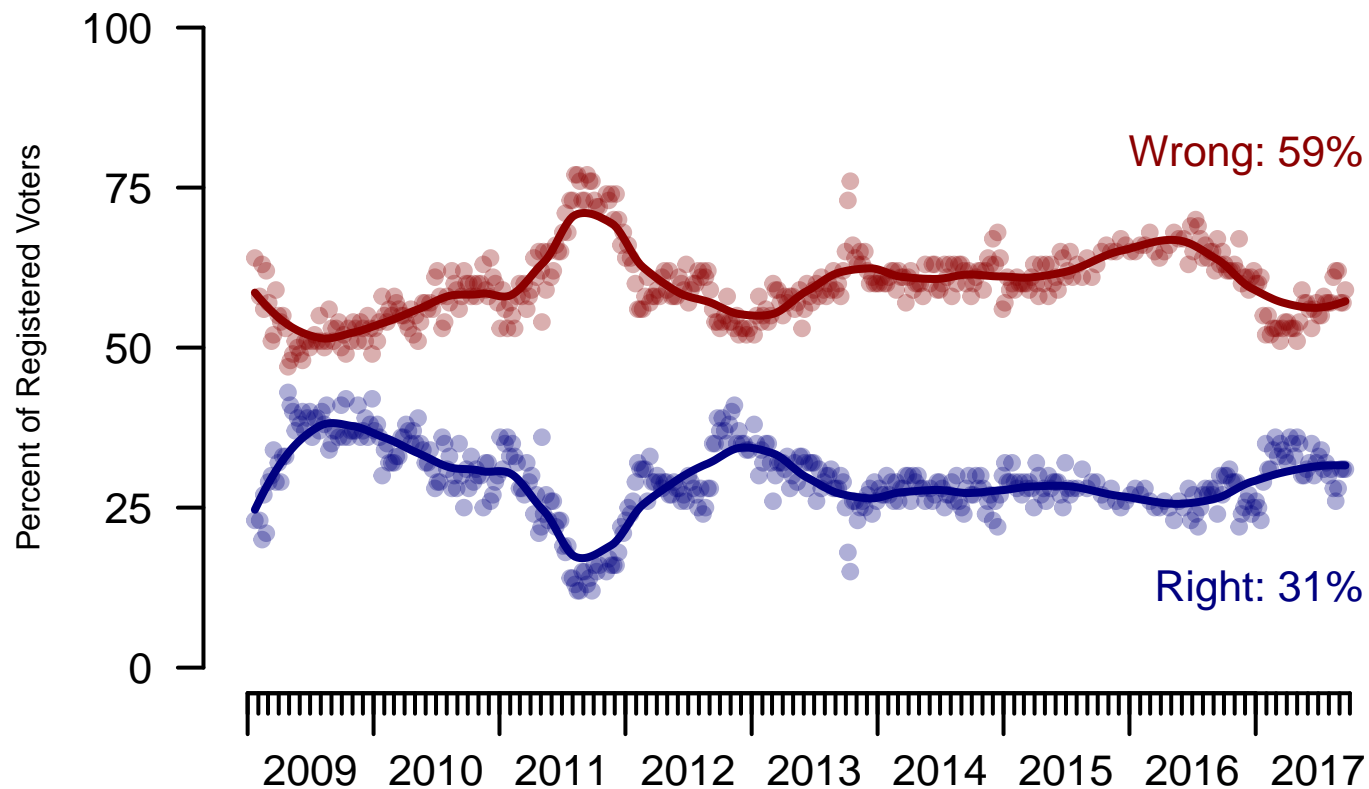


Figure 6: Direction of Country – Registered Voters

**6. Direction of Country – This Week – All Adults**

Would you say things in this country today are...

|   | Age (4 category) |            |            |            |            | Race         |            |            | Census Region |            |            |            |
|---|------------------|------------|------------|------------|------------|--------------|------------|------------|---------------|------------|------------|------------|
|   | Total            | Under 30   | 30-44      | 45-64      | 65+        | White        | Black      | Hispanic   | North-east    | Mid-west   | South      | West       |
| Generally headed in the right direction | 30%              | 27%        | 27%        | 31%        | 35%        | 33%          | 13%        | 29%        | 30%           | 34%        | 30%        | 26%        |
| Off on the wrong track                  | 56%              | 55%        | 59%        | 54%        | 56%        | 53%          | 73%        | 54%        | 55%           | 56%        | 56%        | 56%        |
| Not sure                                | 14%              | 19%        | 14%        | 14%        | 9%         | 14%          | 14%        | 17%        | 15%           | 10%        | 14%        | 18%        |
| Totals (Unweighted N)                   | 100% (1,500)     | 100% (299) | 100% (380) | 100% (556) | 100% (265) | 100% (1,197) | 100% (161) | 100% (142) | 100% (288)    | 100% (365) | 100% (532) | 100% (315) |

|   | Party ID     |            |            |            | Ideology   |            |            | Gender     |            | Family Income (3 category) |            |            |                   |
|---|--------------|------------|------------|------------|------------|------------|------------|------------|------------|----------------------------|------------|------------|-------------------|
|   | Total        | Dem        | Ind        | Rep        | Lib        | Mod        | Con        | Male       | Female     | Under 50                   | 50-100     | 100+       | Prefer not to say |
| Generally headed in the right direction | 30%          | 15%        | 26%        | 56%        | 10%        | 23%        | 54%        | 33%        | 27%        | 31%                        | 32%        | 29%        | 25%               |
| Off on the wrong track                  | 56%          | 76%        | 54%        | 34%        | 83%        | 55%        | 37%        | 54%        | 58%        | 56%                        | 57%        | 64%        | 48%               |
| Not sure                                | 14%          | 8%         | 20%        | 10%        | 7%         | 22%        | 8%         | 12%        | 16%        | 13%                        | 10%        | 8%         | 27%               |
| Totals (Unweighted N)                   | 100% (1,500) | 100% (539) | 100% (608) | 100% (353) | 100% (452) | 100% (621) | 100% (427) | 100% (679) | 100% (821) | 100% (702)                 | 100% (404) | 100% (190) | 100% (204)        |

|  |  |
|--|--|
| <b>Sponsorship</b>                         | <i>The Economist</i>   |
| <b>Fieldwork</b>                           | YouGov   |
| <b>Interviewing Dates</b>                  | September 17 - 19, 2017  |
| <b>Target population</b>                   | U.S. citizens, aged 18 and over.   |
| <b>Sampling method</b>                     | Respondents were selected from YouGov's opt-in Internet panel using sample matching. A random sample (stratified by age, gender, race, education, and region) was selected from the 2014 American Community Study. Voter registration was imputed from the November 2014 Current Population Survey Registration and Voting Supplement. |
| <b>Weighting</b>                           | The sample was weighted based on age, gender, race, education, and 2016 Presidential vote. The weights range from 0.19 to 4.88, with a mean of one and a standard deviation of 0.6.  |
| <b>Number of respondents</b>               | 1500   |
| <b>Margin of error</b>                     | ± 3% (adjusted for weighting)  |
| <b>Margin of error (Registered Voters)</b> | ± 3.4% (adjusted for weighting)  |
| <b>Survey mode</b>                         | Web-based interviews   |
| <b>Full results</b>                        | Available online at<br><a href="http://today.yougov.com/news/categories/economist/">http://today.yougov.com/news/categories/economist/</a> .   |