

Interviewing: May 20 - 23, 2017
Sample: 1500 Adults nationwide online
1107 registered voters nationwide online



The Economist/YouGov Poll

Weekly Tracking

For immediate release

1. Presidential Job Approval – Historical

Do you approve or disapprove of the way [President's name] is handling his job as President?

	All Adults						
	Total Approve	Total Disapprove	Strongly Approve	Somewhat Approve	Somewhat Disapprove	Strongly Disapprove	Not Sure
May 19-23, 2017	39%	51%	19%	20%	12%	39%	11%
May 12-16, 2017	39%	51%	19%	20%	12%	39%	10%
May 5-9, 2017	41%	51%	20%	21%	11%	40%	8%
April 29-May 1, 2017	43%	47%	22%	21%	12%	35%	11%
April 22-24, 2017	42%	49%	23%	19%	12%	37%	10%
April 15-17, 2017	41%	49%	22%	19%	13%	36%	11%
April 8-10, 2017	40%	50%	22%	18%	13%	37%	10%
April 1-3, 2017	40%	48%	21%	19%	11%	37%	11%
March 25-27, 2017	41%	47%	19%	22%	11%	36%	11%
March 18-20, 2017	41%	46%	22%	19%	10%	36%	12%
One Year Ago	47%	48%	20%	27%	14%	34%	6%

	Registered Voters						
	Total Approve	Total Disapprove	Strongly Approve	Somewhat Approve	Somewhat Disapprove	Strongly Disapprove	Not Sure
May 19-23, 2017	40%	53%	21%	19%	10%	43%	7%
May 12-16, 2017	39%	54%	21%	18%	10%	44%	6%
May 5-9, 2017	43%	52%	22%	21%	9%	43%	5%
April 29-May 1, 2017	46%	47%	25%	21%	11%	36%	7%
April 22-24, 2017	45%	49%	26%	19%	11%	38%	6%
April 15-17, 2017	44%	50%	24%	20%	13%	37%	7%
April 8-10, 2017	43%	52%	25%	18%	11%	41%	6%
April 1-3, 2017	43%	50%	23%	20%	11%	39%	8%
March 25-27, 2017	45%	50%	21%	24%	11%	39%	4%
March 18-20, 2017	44%	49%	25%	19%	10%	39%	7%
One Year Ago	45%	52%	22%	23%	13%	39%	3%

Presidential Job Approval

"Do you approve or disapprove of the way Donald Trump is handling his job as President?"

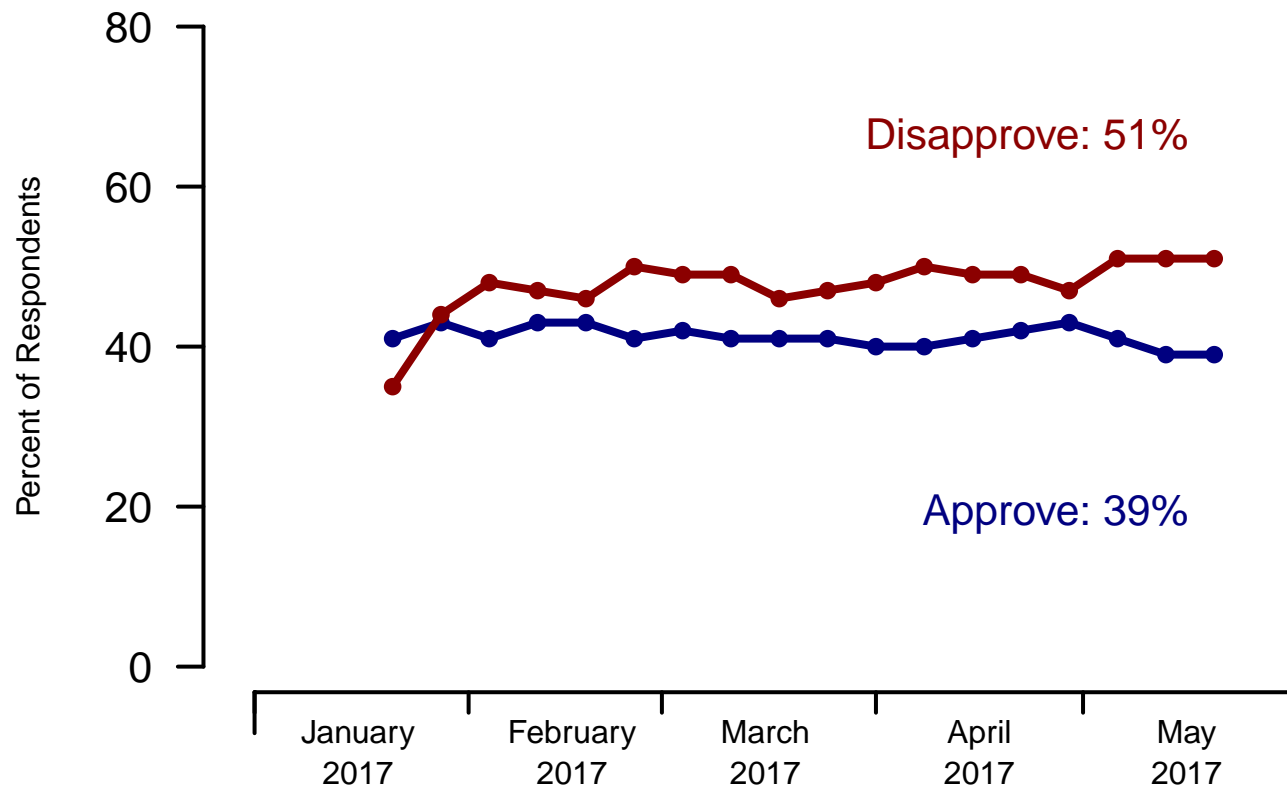


Figure 1: Trump Approval – All Adults

Presidential Job Approval

"Do you approve or disapprove of the way Donald Trump is handling his job as President?"

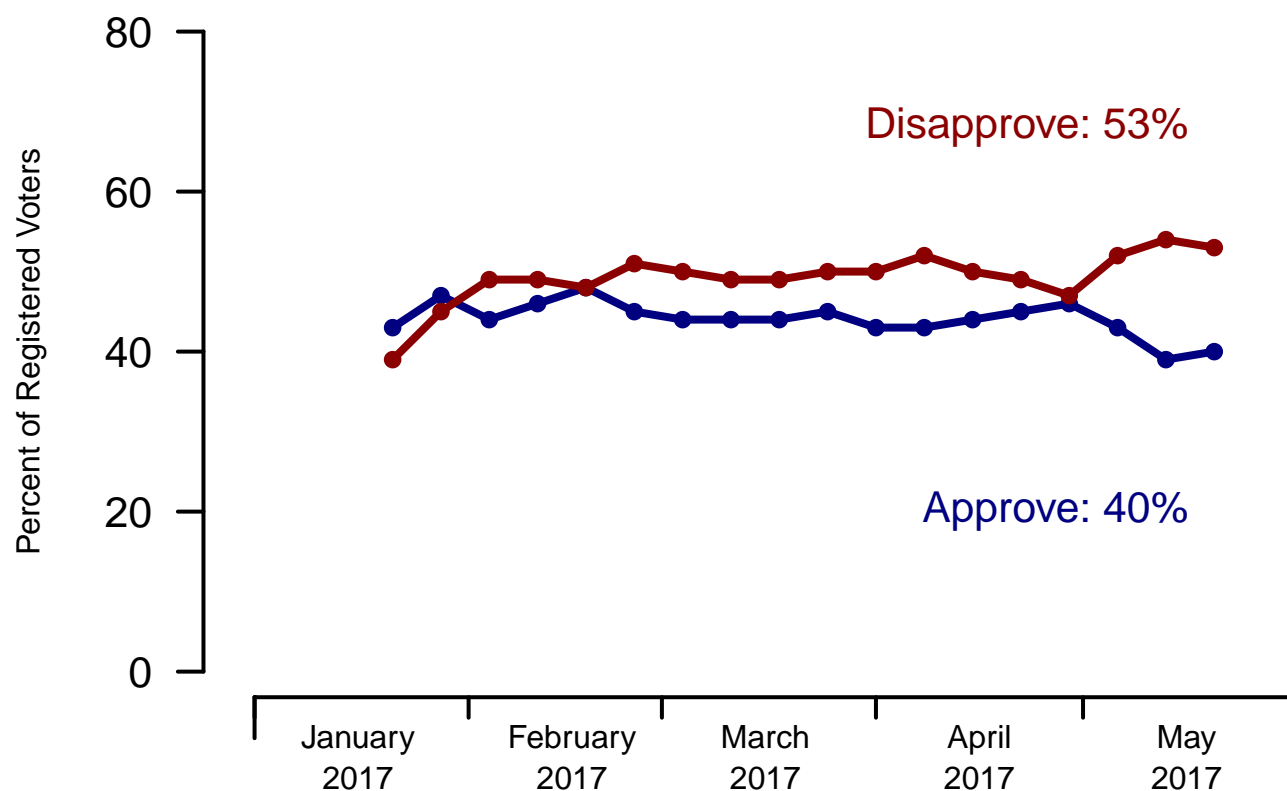


Figure 2: Trump Approval – Registered Voters

2. President Trump Job Approval – This Week – All Adults

Do you approve or disapprove of the way Donald Trump is handling his job as President?

	Total	Age (4 category)				Race			Census Region			
		Under 30	30-44	45-64	65+	White	Black	Hispanic	North-east	Mid-west	South	West
Strongly approve	19%	8%	14%	19%	34%	22%	5%	10%	16%	18%	20%	19%
Somewhat approve	20%	16%	20%	23%	18%	23%	7%	15%	21%	15%	21%	21%
Somewhat disapprove	12%	17%	12%	10%	11%	11%	13%	19%	11%	13%	12%	13%
Strongly disapprove	39%	39%	40%	41%	34%	35%	59%	40%	41%	43%	37%	37%
Not sure	11%	20%	13%	7%	3%	9%	16%	16%	11%	11%	10%	10%
Totals (Unweighted N)	100% (1,500)	100% (326)	100% (355)	100% (555)	100% (264)	100% (1,182)	100% (180)	100% (138)	100% (338)	100% (320)	100% (540)	100% (302)

	Total	Party ID			Ideology			Gender		Family Income (3 category)			
		Dem	Ind	Rep	Lib	Mod	Con	Male	Female	Under 50	50-100	100+	Prefer not to say
Strongly approve	19%	4%	15%	43%	5%	10%	41%	19%	18%	17%	23%	25%	15%
Somewhat approve	20%	7%	19%	38%	6%	18%	34%	24%	17%	20%	22%	15%	19%
Somewhat disapprove	12%	13%	14%	7%	11%	16%	8%	12%	11%	14%	12%	7%	8%
Strongly disapprove	39%	73%	34%	6%	73%	41%	10%	36%	42%	38%	39%	50%	36%
Not sure	11%	3%	18%	6%	5%	16%	8%	8%	12%	11%	5%	3%	21%
Totals (Unweighted N)	100% (1,500)	100% (552)	100% (610)	100% (338)	100% (454)	100% (609)	100% (437)	100% (684)	100% (816)	100% (741)	100% (372)	100% (175)	100% (212)

3. Approval of U.S. Congress – Historical

Overall, do you approve or disapprove of the way that the United States Congress is handling its job?

	All Adults							
	Total Approve	Total Disapprove	Strongly Approve	Somewhat Approve	Neutral	Somewhat Disapprove	Strongly Disapprove	Not Sure
May 19-23, 2017	14%	56%	3%	11%	15%	21%	35%	15%
May 12-16, 2017	11%	55%	3%	8%	17%	21%	34%	17%
May 5-9, 2017	13%	57%	3%	10%	16%	23%	34%	13%
April 29-May 1, 2017	12%	54%	3%	9%	18%	21%	33%	16%
April 22-24, 2017	12%	57%	3%	9%	16%	23%	34%	15%
April 15-17, 2017	13%	54%	4%	9%	17%	21%	33%	15%
April 8-10, 2017	14%	55%	3%	11%	17%	21%	34%	14%
April 1-3, 2017	13%	52%	3%	10%	19%	24%	28%	17%
March 25-27, 2017	13%	56%	3%	10%	16%	25%	31%	15%
March 18-20, 2017	15%	51%	4%	11%	17%	20%	31%	16%
One Year Ago	12%	60%	3%	9%	17%	21%	39%	11%

	Registered Voters							
	Total Approve	Total Disapprove	Strongly Approve	Somewhat Approve	Neutral	Somewhat Disapprove	Strongly Disapprove	Not Sure
May 19-23, 2017	13%	65%	3%	10%	12%	25%	40%	11%
May 12-16, 2017	11%	64%	2%	9%	15%	23%	41%	10%
May 5-9, 2017	13%	64%	3%	10%	14%	24%	40%	9%
April 29-May 1, 2017	11%	63%	3%	8%	16%	23%	40%	11%
April 22-24, 2017	13%	61%	3%	10%	15%	24%	37%	11%
April 15-17, 2017	14%	61%	4%	10%	15%	24%	37%	11%
April 8-10, 2017	13%	61%	3%	10%	15%	22%	39%	10%
April 1-3, 2017	12%	58%	3%	9%	17%	26%	32%	13%
March 25-27, 2017	13%	64%	3%	10%	15%	27%	37%	8%
March 18-20, 2017	14%	56%	3%	11%	18%	21%	35%	11%
One Year Ago	12%	67%	3%	9%	15%	24%	43%	6%

Congress Approval

"Do you approve of the way the
U.S. Congress is handling its job?"

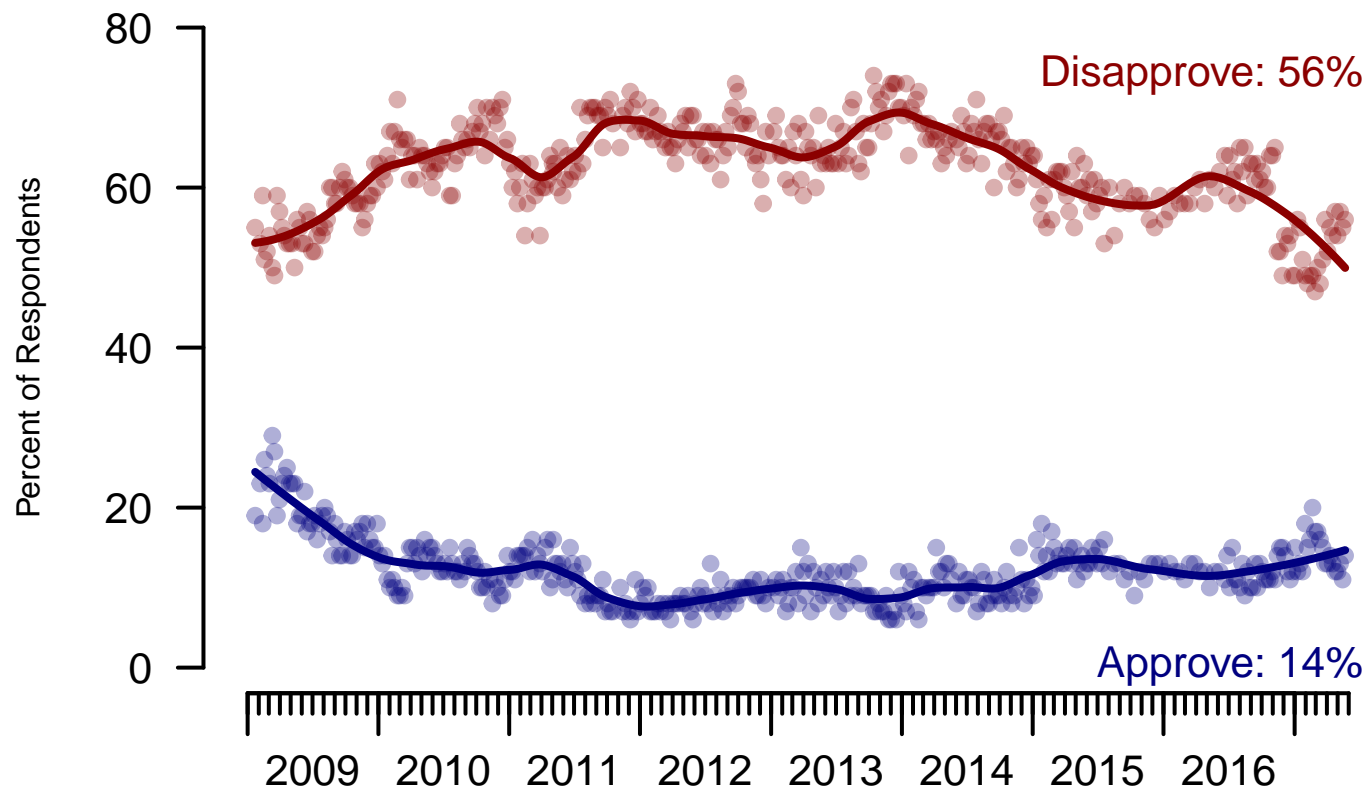


Figure 3: Congress Approval – All Adults

Congress Approval

"Do you approve of the way the
U.S. Congress is handling its job?"

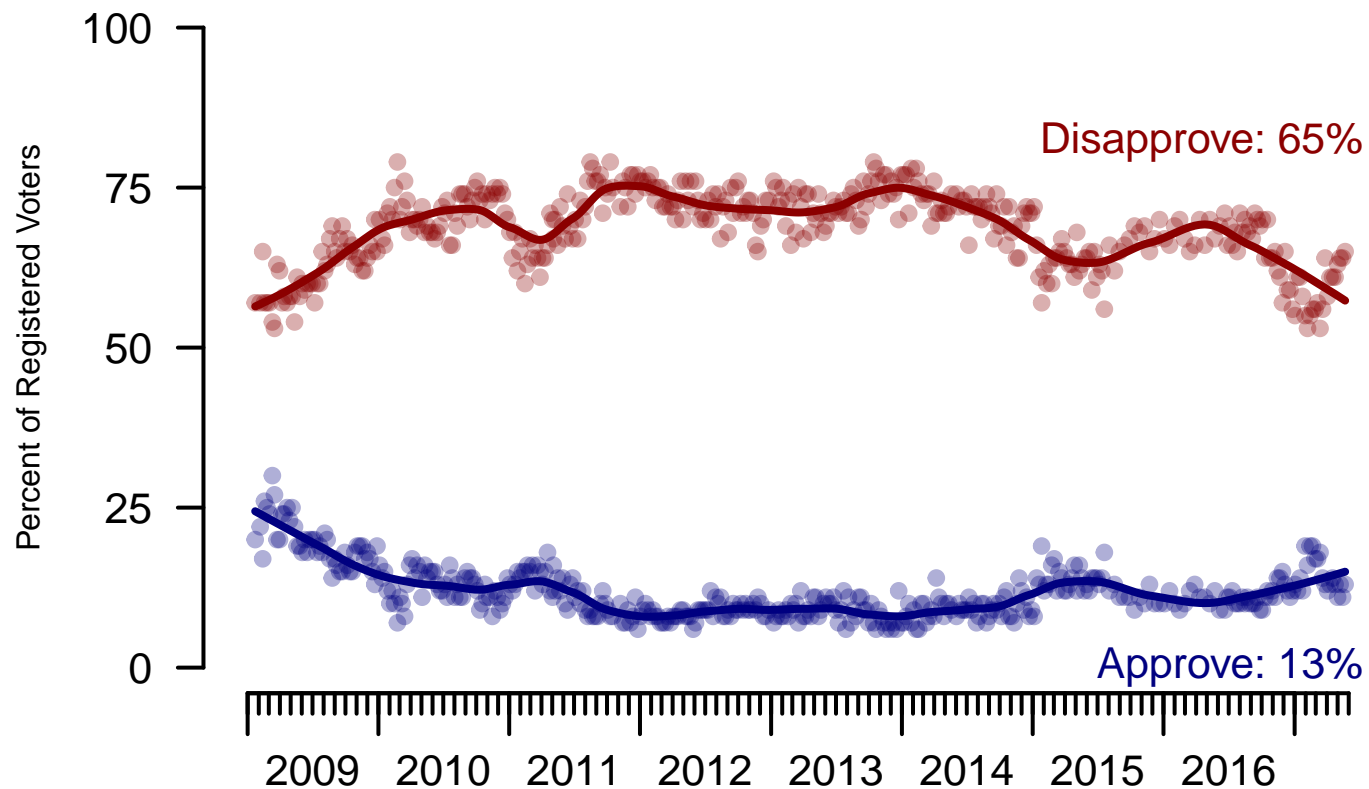


Figure 4: Congress Approval – Registered Voters

4. Approval of U.S. Congress – This Week – All Adults

Overall, do you approve or disapprove of the way that the United States Congress is handling its job?

	Age (4 category)					Race			Census Region			
	Total	Under 30	30-44	45-64	65+	White	Black	Hispanic	North-east	Mid-west	South	West
Strongly approve	3%	4%	5%	2%	2%	3%	2%	1%	3%	3%	3%	3%
Somewhat approve	11%	11%	14%	9%	10%	11%	5%	17%	11%	8%	11%	13%
Neither approve nor disapprove	15%	18%	12%	16%	12%	15%	16%	15%	16%	15%	14%	14%
Somewhat disapprove	21%	18%	18%	20%	32%	24%	14%	15%	19%	23%	22%	21%
Strongly disapprove	35%	26%	30%	40%	40%	34%	40%	34%	33%	34%	35%	37%
Not sure	15%	23%	20%	13%	5%	14%	22%	18%	17%	17%	15%	13%
Totals (Unweighted N)	100% (1,484)	100% (319)	100% (350)	100% (551)	100% (264)	100% (1,169)	100% (177)	100% (138)	100% (336)	100% (316)	100% (534)	100% (298)

	Party ID				Ideology			Gender		Family Income (3 category)			
	Total	Dem	Ind	Rep	Lib	Mod	Con	Male	Female	Under 50	50-100	100+	Prefer not to say
Strongly approve	3%	2%	2%	6%	4%	2%	4%	4%	2%	3%	3%	5%	1%
Somewhat approve	11%	6%	7%	23%	7%	7%	18%	10%	12%	11%	13%	9%	9%
Neither approve nor disapprove	15%	14%	16%	13%	6%	20%	16%	14%	16%	17%	13%	7%	13%
Somewhat disapprove	21%	20%	21%	25%	20%	17%	28%	20%	22%	20%	27%	21%	18%
Strongly disapprove	35%	48%	33%	22%	57%	30%	24%	41%	29%	30%	38%	54%	35%
Not sure	15%	9%	22%	11%	7%	24%	10%	11%	20%	19%	6%	5%	23%
Totals (Unweighted N)	100% (1,484)	100% (550)	100% (598)	100% (336)	100% (451)	100% (602)	100% (431)	100% (675)	100% (809)	100% (732)	100% (369)	100% (174)	100% (209)

5. Direction of country – Historical

Would you say things in this country today are...

	All Adults		
	Right Direction	Wrong Track	Not Sure
May 19-23, 2017	30%	55%	16%
May 12-16, 2017	31%	55%	14%
May 5-9, 2017	33%	52%	15%
April 29-May 1, 2017	34%	50%	16%
April 22-24, 2017	32%	51%	17%
April 15-17, 2017	32%	51%	16%
April 8-10, 2017	32%	53%	15%
April 1-3, 2017	31%	52%	18%
March 25-27, 2017	30%	52%	18%
March 18-20, 2017	34%	51%	15%
One Year Ago	27%	64%	9%

	Registered Voters		
	Right Direction	Wrong Track	Not Sure
May 19-23, 2017	30%	57%	13%
May 12-16, 2017	30%	59%	11%
May 5-9, 2017	35%	54%	11%
April 29-May 1, 2017	36%	51%	13%
April 22-24, 2017	33%	53%	14%
April 15-17, 2017	35%	53%	12%
April 8-10, 2017	36%	53%	11%
April 1-3, 2017	32%	54%	14%
March 25-27, 2017	33%	54%	13%
March 18-20, 2017	34%	53%	13%
One Year Ago	26%	67%	7%

Direction of Country

"Would you say things in this country today are generally headed in the right direction or off on the wrong track?"

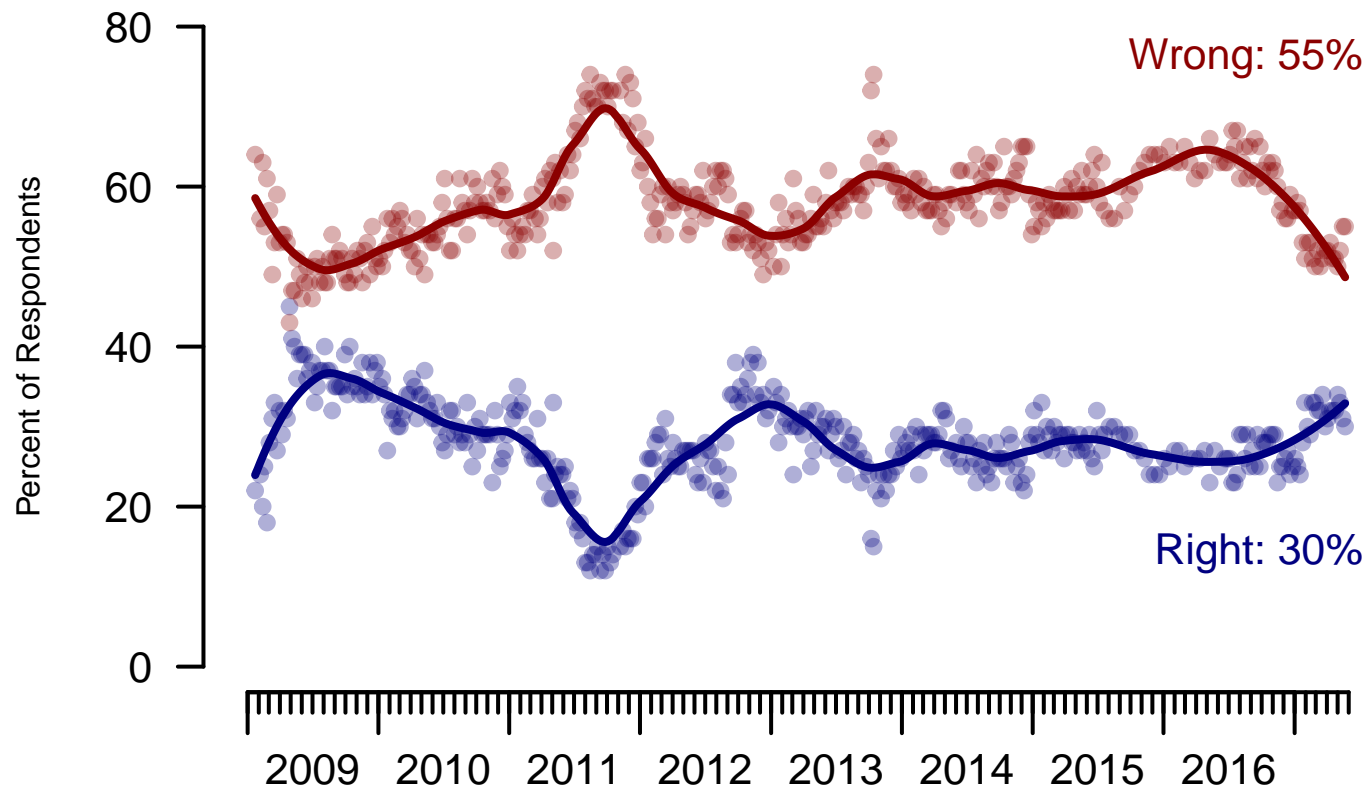


Figure 5: Direction of Country – All Adults

Direction of Country

"Would you say things in this country today are generally headed in the right direction or off on the wrong track?"

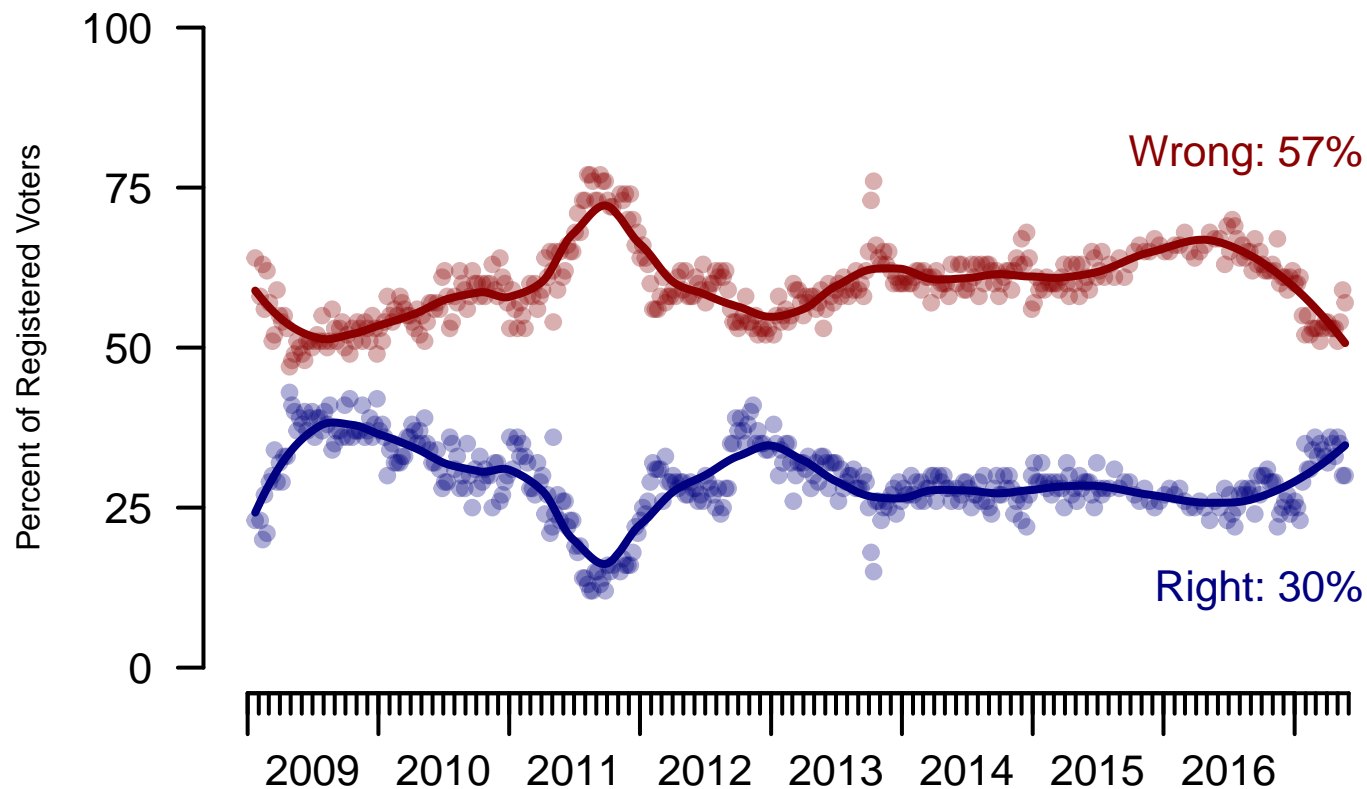


Figure 6: Direction of Country – Registered Voters

6. Direction of Country – This Week – All Adults

Would you say things in this country today are...

	Age (4 category)					Race			Census Region			
	Total	Under 30	30-44	45-64	65+	White	Black	Hispanic	North-east	Mid-west	South	West
Generally headed in the right direction	30%	23%	32%	27%	38%	33%	12%	30%	31%	27%	31%	28%
Off on the wrong track	55%	59%	50%	58%	51%	53%	68%	51%	53%	58%	52%	58%
Not sure	16%	19%	18%	15%	11%	15%	19%	19%	16%	15%	17%	14%
Totals (Unweighted N)	100% (1,500)	100% (326)	100% (355)	100% (555)	100% (264)	100% (1,182)	100% (180)	100% (138)	100% (338)	100% (320)	100% (540)	100% (302)

	Party ID				Ideology			Gender		Family Income (3 category)			
	Total	Dem	Ind	Rep	Lib	Mod	Con	Male	Female	Under 50	50-100	100+	Prefer not to say
Generally headed in the right direction	30%	14%	25%	59%	12%	22%	53%	35%	25%	28%	39%	29%	24%
Off on the wrong track	55%	78%	52%	29%	81%	54%	35%	51%	58%	54%	51%	64%	55%
Not sure	16%	8%	23%	12%	7%	24%	12%	14%	18%	18%	10%	7%	21%
Totals (Unweighted N)	100% (1,500)	100% (552)	100% (610)	100% (338)	100% (454)	100% (609)	100% (437)	100% (684)	100% (816)	100% (741)	100% (372)	100% (175)	100% (212)

Sponsorship	<i>The Economist</i>
Fieldwork	YouGov
Interviewing Dates	May 20 - 23, 2017
Target population	U.S. citizens, aged 18 and over.
Sampling method	Respondents were selected from YouGov's opt-in Internet panel using sample matching. A random sample (stratified by age, gender, race, education, and region) was selected from the 2014 American Community Study. Voter registration was imputed from the November 2014 Current Population Survey Registration and Voting Supplement.
Weighting	The sample was weighted based on age, gender, race, education, and 2016 Presidential vote. The weights range from 0.22 to 5.64, with a mean of one and a standard deviation of 0.7.
Number of respondents	1500
Margin of error	± 3% (adjusted for weighting)
Margin of error (Registered Voters)	± 3.4% (adjusted for weighting)
Survey mode	Web-based interviews
Full results	Available online at http://today.yougov.com/news/categories/economist/ .