

Interviewing: October 22 - 23, 2017
Sample: 1500 Adults nationwide online
1075 registered voters nationwide online



The Economist/YouGov Poll

Weekly Tracking

For immediate release

1. Presidential Job Approval – Historical

Do you approve or disapprove of the way [President's name] is handling his job as President?

	All Adults						
	Total Approve	Total Disapprove	Strongly Approve	Somewhat Approve	Somewhat Disapprove	Strongly Disapprove	Not Sure
October 20-24, 2017	37%	53%	19%	18%	11%	42%	9%
October 13-17, 2017	37%	52%	20%	17%	10%	42%	10%
October 6-10, 2017	36%	52%	19%	17%	10%	42%	12%
September 30-October 2, 2017	39%	54%	20%	19%	12%	42%	8%
September 23-25, 2017	37%	53%	19%	18%	12%	41%	10%
September 16-18, 2017	39%	49%	19%	20%	13%	36%	12%
September 9-11, 2017	39%	52%	21%	18%	13%	39%	8%
September 2-4, 2017	41%	52%	21%	20%	13%	39%	8%
August 26-28, 2017	38%	53%	18%	20%	12%	41%	10%
August 19-21, 2017	39%	51%	18%	21%	12%	39%	9%
One Year Ago	47%	50%	29%	18%	13%	37%	3%

	Registered Voters						
	Total Approve	Total Disapprove	Strongly Approve	Somewhat Approve	Somewhat Disapprove	Strongly Disapprove	Not Sure
October 20-24, 2017	41%	56%	23%	18%	10%	46%	4%
October 13-17, 2017	41%	54%	23%	18%	9%	45%	6%
October 6-10, 2017	41%	53%	24%	17%	9%	44%	6%
September 30-October 2, 2017	42%	55%	22%	20%	10%	45%	3%
September 23-25, 2017	40%	55%	22%	18%	10%	45%	5%
September 16-18, 2017	43%	51%	23%	20%	11%	40%	7%
September 9-11, 2017	42%	54%	24%	18%	11%	43%	4%
September 2-4, 2017	42%	54%	23%	19%	13%	41%	5%
August 26-28, 2017	40%	55%	21%	19%	10%	45%	5%
August 19-21, 2017	40%	54%	20%	20%	11%	43%	5%
One Year Ago	47%	50%	29%	18%	13%	37%	3%

Presidential Job Approval

"Do you approve or disapprove of the way Donald Trump is handling his job as President?"

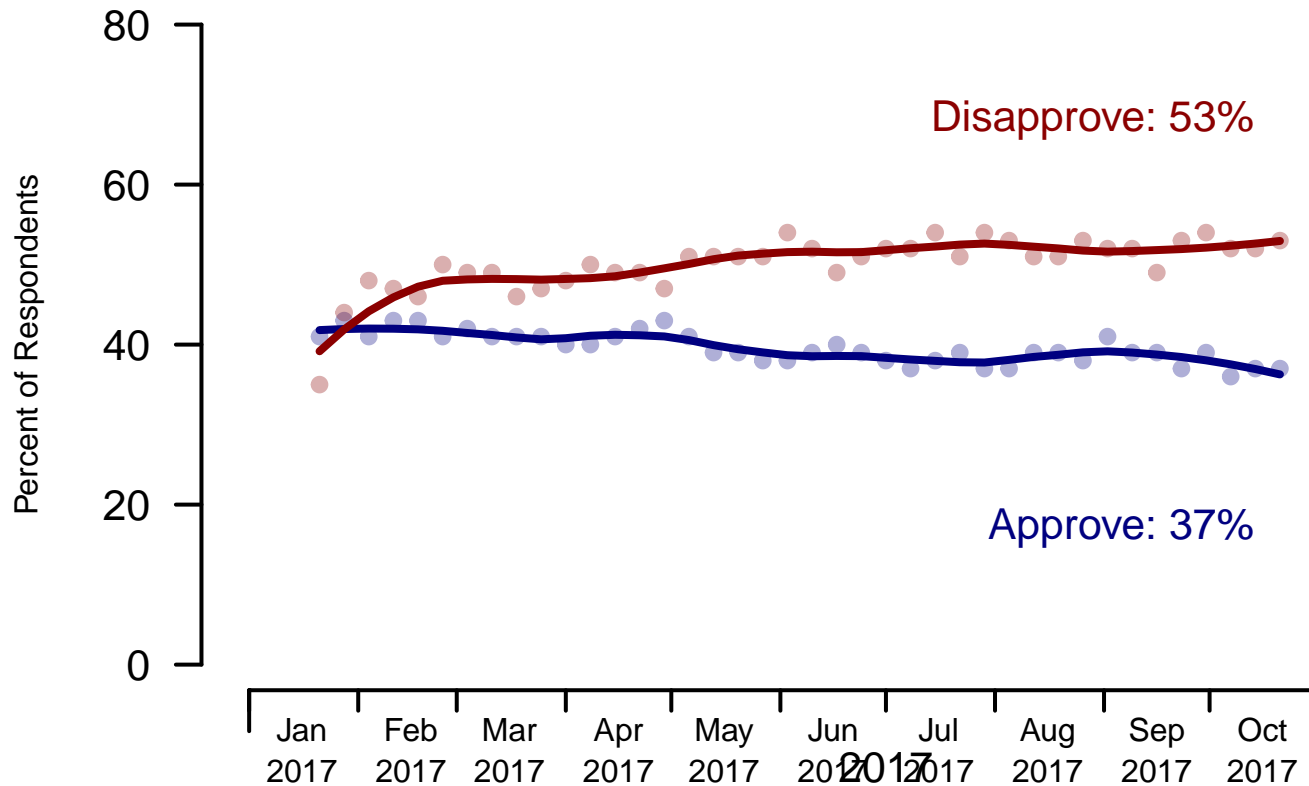


Figure 1: Trump Approval – All Adults

Presidential Job Approval

"Do you approve or disapprove of the way Donald Trump is handling his job as President?"

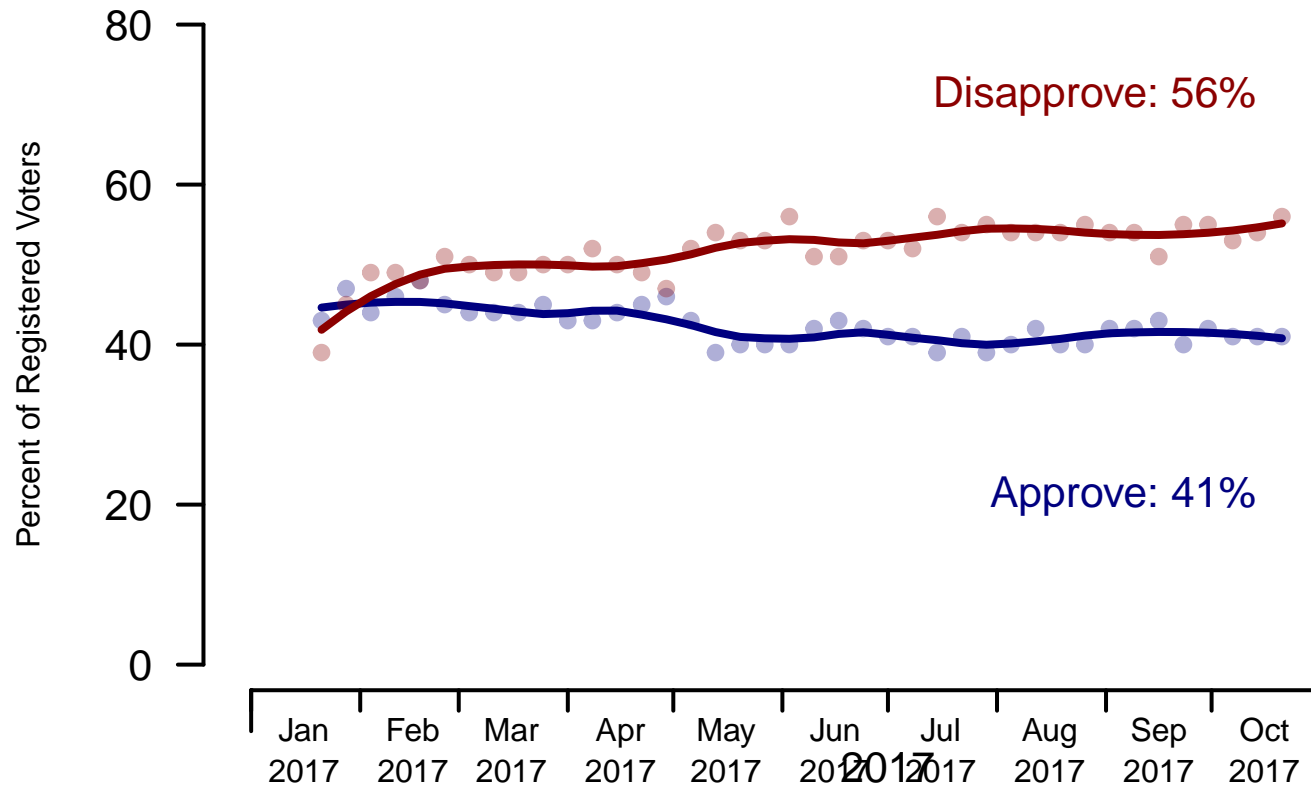


Figure 2: Trump Approval – Registered Voters

2. President Trump Job Approval – This Week – All Adults

Do you approve or disapprove of the way Donald Trump is handling his job as President?

	Age (4 category)					Race			Census Region			
	Total	Under 30	30-44	45-64	65+	White	Black	Hispanic	North-east	Mid-west	South	West
Strongly approve	19%	10%	8%	24%	32%	22%	6%	16%	14%	14%	24%	19%
Somewhat approve	18%	15%	18%	22%	15%	21%	7%	11%	12%	18%	22%	16%
Somewhat disapprove	11%	18%	13%	8%	9%	11%	8%	19%	11%	14%	10%	12%
Strongly disapprove	42%	43%	43%	43%	41%	38%	69%	40%	49%	51%	34%	44%
Not sure	9%	15%	17%	4%	3%	8%	10%	14%	13%	4%	11%	9%
Totals (Unweighted N)	100% (1,500)	100% (226)	100% (436)	100% (530)	100% (308)	100% (1,177)	100% (178)	100% (145)	100% (271)	100% (322)	100% (553)	100% (354)

	Party ID			Ideology			Gender		Family Income (3 category)			Prefer not to say	
	Total	Dem	Ind	Rep	Lib	Mod	Con	Male	Female	Under 50	50-100		100+
Strongly approve	19%	3%	15%	48%	2%	9%	47%	23%	15%	14%	26%	23%	20%
Somewhat approve	18%	4%	18%	36%	4%	16%	32%	20%	16%	16%	20%	24%	19%
Somewhat disapprove	11%	13%	13%	7%	8%	17%	7%	10%	13%	14%	8%	12%	9%
Strongly disapprove	42%	76%	37%	7%	82%	42%	12%	39%	46%	45%	42%	38%	39%
Not sure	9%	4%	17%	1%	4%	16%	3%	8%	11%	12%	4%	4%	14%
Totals (Unweighted N)	100% (1,500)	100% (534)	100% (604)	100% (362)	100% (434)	100% (611)	100% (455)	100% (676)	100% (824)	100% (696)	100% (437)	100% (177)	100% (190)

3. Approval of U.S. Congress – Historical

Overall, do you approve or disapprove of the way that the United States Congress is handling its job?

	All Adults							
	Total Approve	Total Disapprove	Strongly Approve	Somewhat Approve	Neutral	Somewhat Disapprove	Strongly Disapprove	Not Sure
October 20-24, 2017	8%	61%	3%	5%	15%	22%	39%	17%
October 13-17, 2017	10%	62%	3%	7%	14%	20%	42%	14%
October 6-10, 2017	8%	59%	2%	6%	15%	19%	40%	18%
September 30-October 2, 2017	10%	59%	2%	8%	15%	24%	35%	16%
September 23-25, 2017	9%	59%	2%	7%	15%	21%	38%	16%
September 16-18, 2017	10%	58%	2%	8%	16%	24%	34%	17%
September 9-11, 2017	11%	58%	4%	7%	18%	21%	37%	14%
September 2-4, 2017	11%	57%	2%	9%	17%	21%	36%	15%
August 26-28, 2017	11%	59%	3%	8%	15%	22%	37%	15%
August 19-21, 2017	12%	60%	3%	9%	15%	21%	39%	13%
One Year Ago	11%	64%	3%	8%	17%	25%	39%	8%

	Registered Voters							
	Total Approve	Total Disapprove	Strongly Approve	Somewhat Approve	Neutral	Somewhat Disapprove	Strongly Disapprove	Not Sure
October 20-24, 2017	8%	69%	2%	6%	13%	24%	45%	10%
October 13-17, 2017	8%	71%	3%	5%	13%	23%	48%	9%
October 6-10, 2017	7%	69%	2%	5%	14%	22%	47%	10%
September 30-October 2, 2017	9%	66%	2%	7%	14%	25%	41%	10%
September 23-25, 2017	9%	67%	2%	7%	14%	23%	44%	11%
September 16-18, 2017	9%	66%	2%	7%	15%	27%	39%	10%
September 9-11, 2017	10%	65%	3%	7%	17%	23%	42%	7%
September 2-4, 2017	10%	63%	2%	8%	16%	23%	40%	10%
August 26-28, 2017	11%	69%	3%	8%	12%	26%	43%	8%
August 19-21, 2017	11%	67%	4%	7%	14%	24%	43%	9%
One Year Ago	11%	64%	3%	8%	17%	25%	39%	8%

Congress Approval

"Do you approve of the way the U.S. Congress is handling its job?"

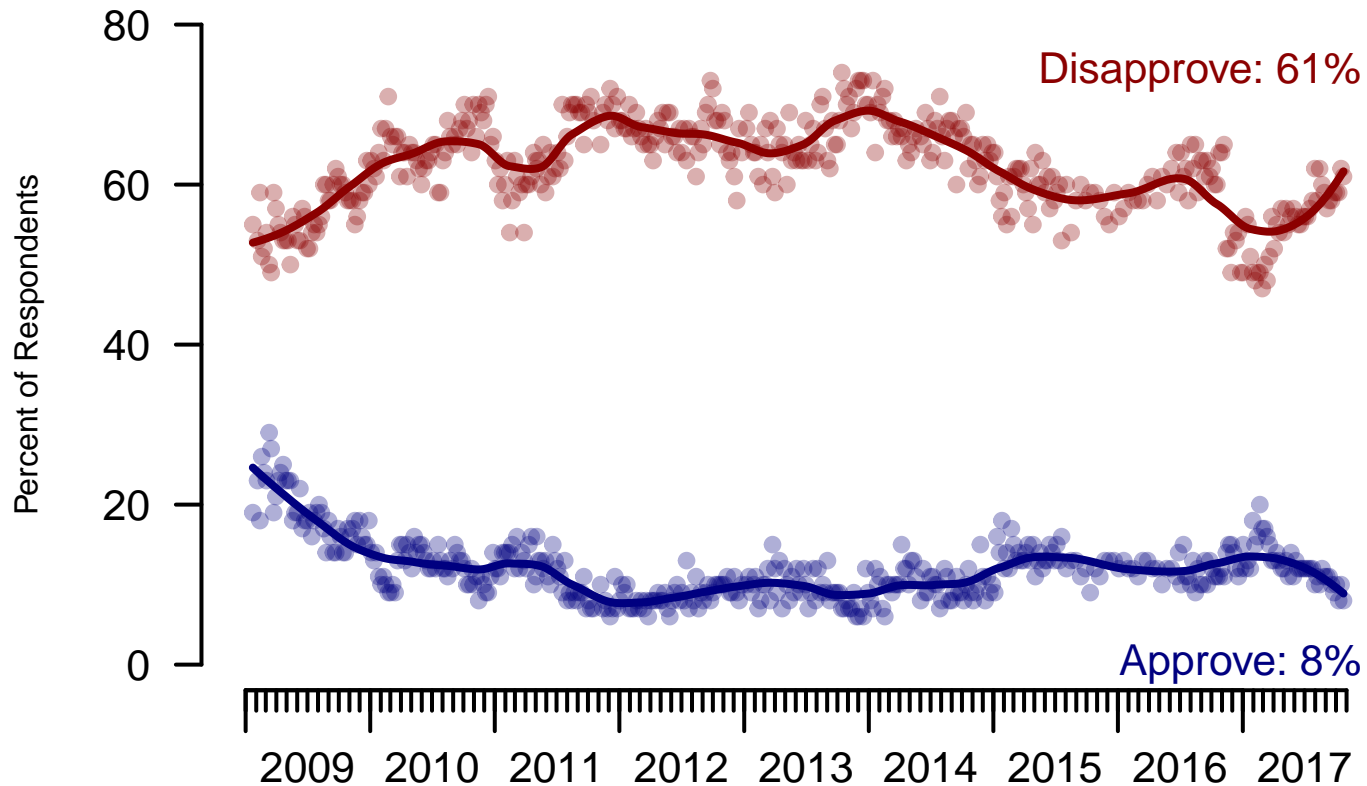


Figure 3: Congress Approval – All Adults

Congress Approval

"Do you approve of the way the
U.S. Congress is handling its job?"

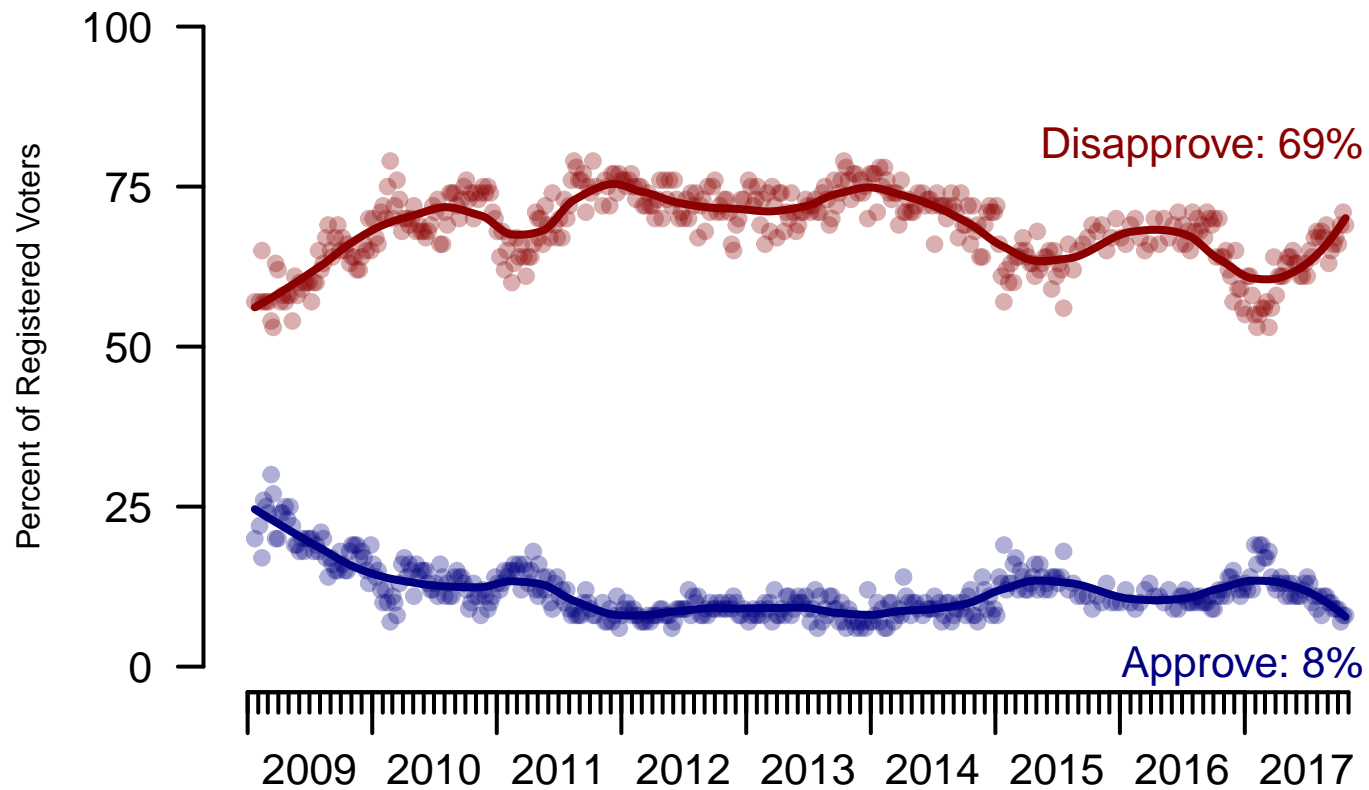


Figure 4: Congress Approval – Registered Voters

4. Approval of U.S. Congress – This Week – All Adults

Overall, do you approve or disapprove of the way that the United States Congress is handling its job?

	Age (4 category)					Race			Census Region			
	Total	Under 30	30-44	45-64	65+	White	Black	Hispanic	North-east	Mid-west	South	West
Strongly approve	3%	4%	5%	1%	1%	1%	4%	9%	2%	1%	5%	1%
Somewhat approve	5%	5%	6%	6%	3%	6%	4%	4%	6%	5%	6%	4%
Neither approve nor disapprove	15%	17%	21%	13%	9%	13%	20%	21%	13%	17%	16%	11%
Somewhat disapprove	22%	23%	16%	24%	22%	25%	14%	9%	22%	21%	20%	24%
Strongly disapprove	39%	21%	30%	44%	59%	39%	42%	32%	37%	42%	36%	43%
Not sure	17%	29%	23%	12%	7%	16%	16%	26%	19%	13%	18%	17%
Totals (Unweighted N)	100% (1,488)	100% (224)	100% (428)	100% (529)	100% (307)	100% (1,168)	100% (176)	100% (144)	100% (270)	100% (321)	100% (546)	100% (351)

	Party ID			Ideology			Gender		Family Income (3 category)				
	Total	Dem	Ind	Rep	Lib	Mod	Con	Male	Female	Under 50	50-100	100+	Prefer not to say
Strongly approve	3%	3%	2%	4%	3%	3%	3%	3%	2%	2%	4%	1%	3%
Somewhat approve	5%	4%	4%	10%	3%	5%	8%	6%	4%	5%	6%	8%	3%
Neither approve nor disapprove	15%	12%	16%	17%	11%	18%	14%	12%	17%	16%	13%	10%	18%
Somewhat disapprove	22%	24%	17%	26%	21%	20%	24%	22%	21%	18%	29%	22%	19%
Strongly disapprove	39%	47%	38%	30%	53%	31%	39%	44%	34%	37%	37%	52%	37%
Not sure	17%	10%	24%	13%	9%	25%	12%	13%	21%	21%	12%	8%	20%
Totals (Unweighted N)	100% (1,488)	100% (532)	100% (594)	100% (362)	100% (433)	100% (603)	100% (452)	100% (671)	100% (817)	100% (690)	100% (435)	100% (177)	100% (186)

5. Direction of country – Historical

Would you say things in this country today are...

	All Adults		
	Right Direction	Wrong Track	Not Sure
October 20-24, 2017	28%	58%	14%
October 13-17, 2017	30%	58%	13%
October 6-10, 2017	27%	59%	14%
September 30-October 2, 2017	25%	62%	13%
September 23-25, 2017	27%	59%	14%
September 16-18, 2017	30%	56%	14%
September 9-11, 2017	28%	56%	16%
September 2-4, 2017	31%	55%	14%
August 26-28, 2017	27%	60%	13%
August 19-21, 2017	25%	59%	16%
One Year Ago	29%	62%	8%

	Registered Voters		
	Right Direction	Wrong Track	Not Sure
October 20-24, 2017	31%	60%	9%
October 13-17, 2017	31%	59%	10%
October 6-10, 2017	29%	60%	11%
September 30-October 2, 2017	27%	63%	10%
September 23-25, 2017	28%	60%	12%
September 16-18, 2017	31%	59%	10%
September 9-11, 2017	31%	57%	12%
September 2-4, 2017	31%	57%	12%
August 26-28, 2017	28%	62%	10%
August 19-21, 2017	26%	62%	12%
One Year Ago	29%	62%	8%

Direction of Country

"Would you say things in this country today are generally headed in the right direction or off on the wrong track?"

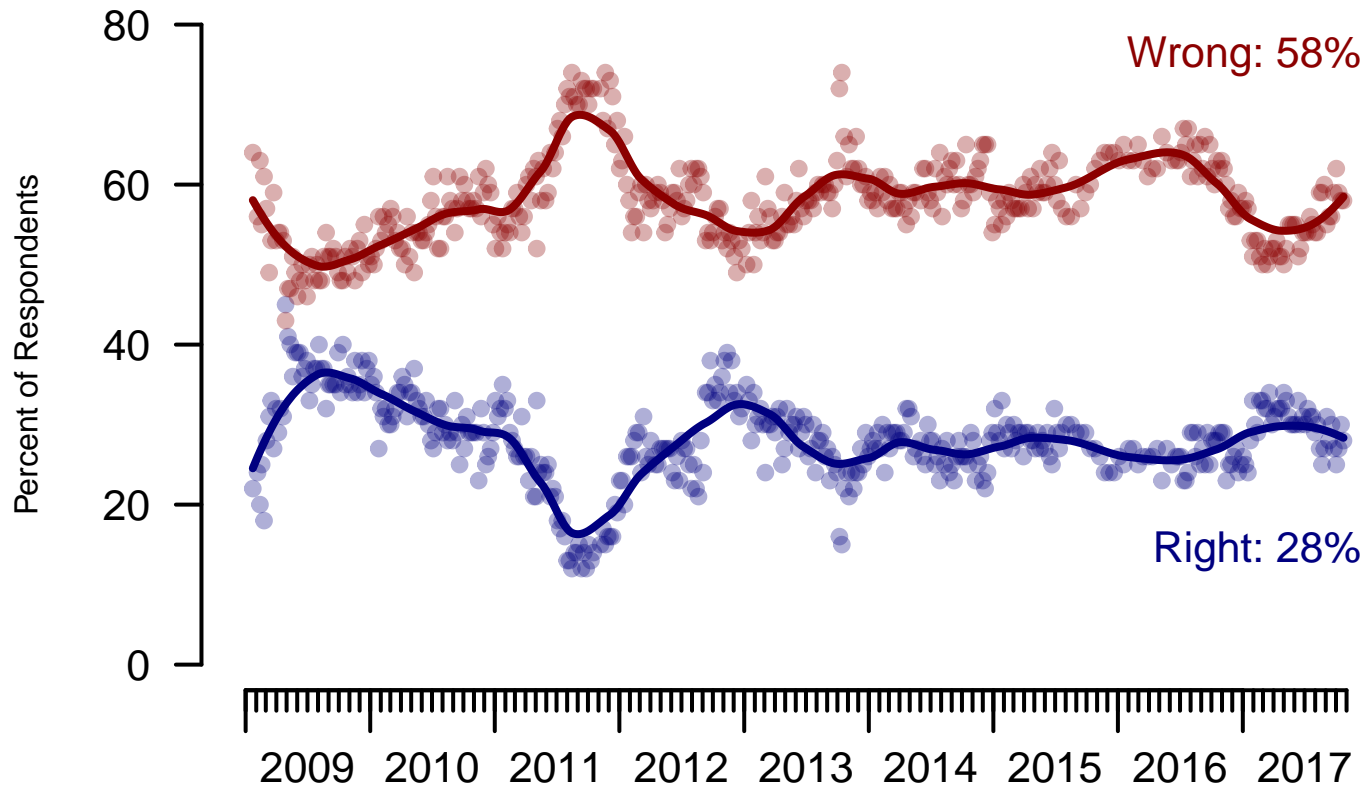


Figure 5: Direction of Country – All Adults

Direction of Country

"Would you say things in this country today are generally headed in the right direction or off on the wrong track?"

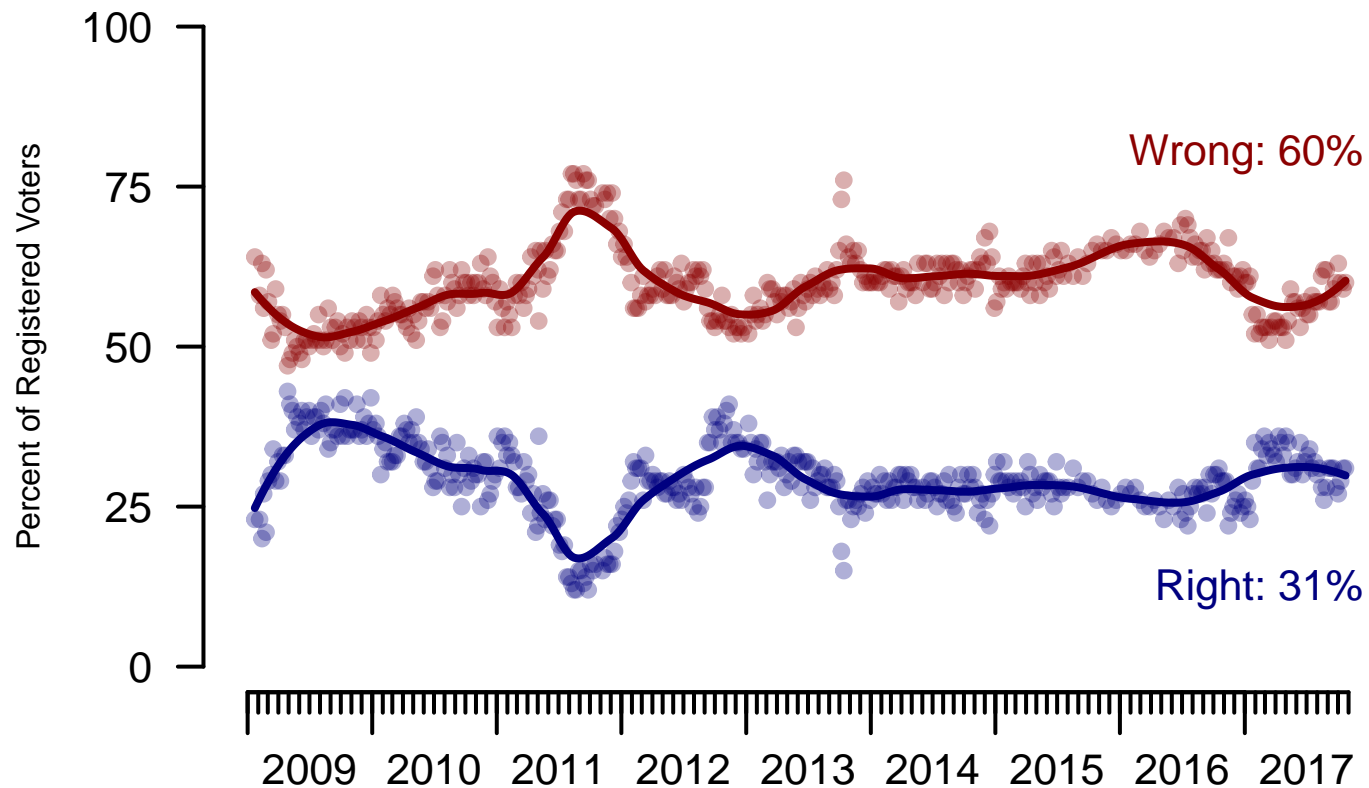


Figure 6: Direction of Country – Registered Voters

6. Direction of Country – This Week – All Adults

Would you say things in this country today are...

	Age (4 category)					Race			Census Region			
	Total	Under 30	30-44	45-64	65+	White	Black	Hispanic	North-east	Mid-west	South	West
Generally headed in the right direction	28%	19%	27%	30%	37%	31%	13%	31%	23%	25%	33%	28%
Off on the wrong track	58%	60%	57%	60%	54%	55%	77%	55%	63%	65%	54%	55%
Not sure	14%	21%	17%	10%	9%	14%	10%	14%	14%	10%	13%	16%
Totals (Unweighted N)	100% (1,500)	100% (226)	100% (436)	100% (530)	100% (308)	100% (1,177)	100% (178)	100% (145)	100% (271)	100% (322)	100% (553)	100% (354)

	Party ID			Ideology			Gender		Family Income (3 category)				
	Total	Dem	Ind	Rep	Lib	Mod	Con	Male	Female	Under 50	50-100	100+	Prefer not to say
Generally headed in the right direction	28%	12%	25%	58%	11%	22%	53%	36%	21%	23%	35%	35%	31%
Off on the wrong track	58%	82%	54%	33%	86%	58%	35%	53%	63%	62%	57%	58%	47%
Not sure	14%	7%	21%	9%	3%	20%	12%	11%	16%	15%	8%	7%	22%
Totals (Unweighted N)	100% (1,500)	100% (534)	100% (604)	100% (362)	100% (434)	100% (611)	100% (455)	100% (676)	100% (824)	100% (696)	100% (437)	100% (177)	100% (190)

The Economist/YouGov Poll
October 22 - 23, 2017



Sponsorship	<i>The Economist</i>
Fieldwork	YouGov
Interviewing Dates	October 22 - 23, 2017
Target population	U.S. citizens, aged 18 and over.
Sampling method	Respondents were selected from YouGov's opt-in Internet panel using sample matching. A random sample (stratified by age, gender, race, education, and region) was selected from the 2014 American Community Study. Voter registration was imputed from the November 2014 Current Population Survey Registration and Voting Supplement.
Weighting	The sample was weighted based on age, gender, race, education, and 2016 Presidential vote. The weights range from 0.21 to 5.26, with a mean of one and a standard deviation of 0.7.
Number of respondents	1500
Margin of error	± 3.1% (adjusted for weighting)
Margin of error (Registered Voters)	± 3.4% (adjusted for weighting)
Survey mode	Web-based interviews
Full results	Available online at http://today.yougov.com/news/categories/economist/ .