

Interviewing: March 19 - 21, 2017
Sample: 1500 Adults nationwide online
1103 registered voters nationwide online



The Economist/YouGov Poll

Weekly Tracking

For immediate release

1. Presidential Job Approval – Historical

Do you approve or disapprove of the way [President's name] is handling his job as President?

	All Adults						
	Total Approve	Total Disapprove	Strongly Approve	Somewhat Approve	Somewhat Disapprove	Strongly Disapprove	Not Sure
March 17-21, 2017	41%	46%	22%	19%	10%	36%	12%
March 10-14, 2017	41%	49%	20%	21%	14%	35%	11%
March 3-7, 2017	42%	49%	23%	19%	10%	39%	9%
February 25-27, 2017	41%	50%	23%	18%	13%	37%	9%
February 18-20, 2017	43%	46%	23%	20%	9%	37%	11%
February 11-13, 2017	43%	47%	23%	20%	9%	38%	10%
February 4-6, 2017	41%	48%	25%	16%	11%	37%	11%
January 28-30, 2017	43%	44%	25%	18%	11%	33%	14%
January 21-23, 2017	49%	43%	27%	22%	13%	30%	7%
January 14-16, 2017	52%	40%	32%	20%	13%	27%	8%
One Year Ago	47%	49%	22%	25%	14%	35%	3%

	Registered Voters						
	Total Approve	Total Disapprove	Strongly Approve	Somewhat Approve	Somewhat Disapprove	Strongly Disapprove	Not Sure
March 17-21, 2017	44%	49%	25%	19%	10%	39%	7%
March 10-14, 2017	44%	49%	23%	21%	11%	38%	6%
March 3-7, 2017	44%	50%	26%	18%	10%	40%	6%
February 25-27, 2017	45%	51%	28%	17%	10%	41%	4%
February 18-20, 2017	48%	48%	28%	20%	8%	40%	5%
February 11-13, 2017	46%	49%	27%	19%	8%	41%	5%
February 4-6, 2017	44%	49%	29%	15%	8%	41%	6%
January 28-30, 2017	47%	45%	30%	17%	9%	36%	8%
January 21-23, 2017	53%	44%	31%	22%	11%	33%	3%
January 14-16, 2017	54%	42%	36%	18%	11%	31%	4%
One Year Ago	44%	54%	23%	21%	13%	41%	2%

Presidential Job Approval

"Do you approve or disapprove of the way Donald Trump is handling his job as President?"

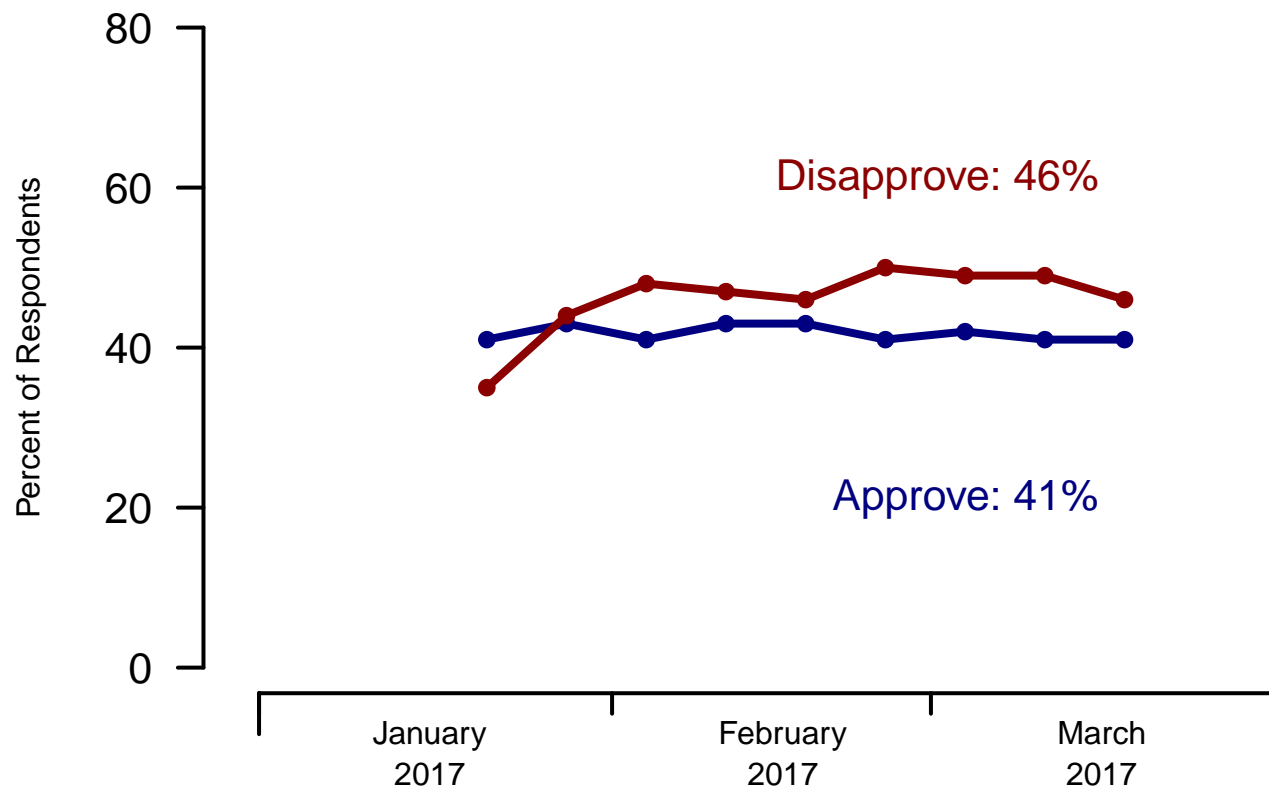


Figure 1: Trump Approval – All Adults

Presidential Job Approval

"Do you approve or disapprove of the way Donald Trump is handling his job as President?"

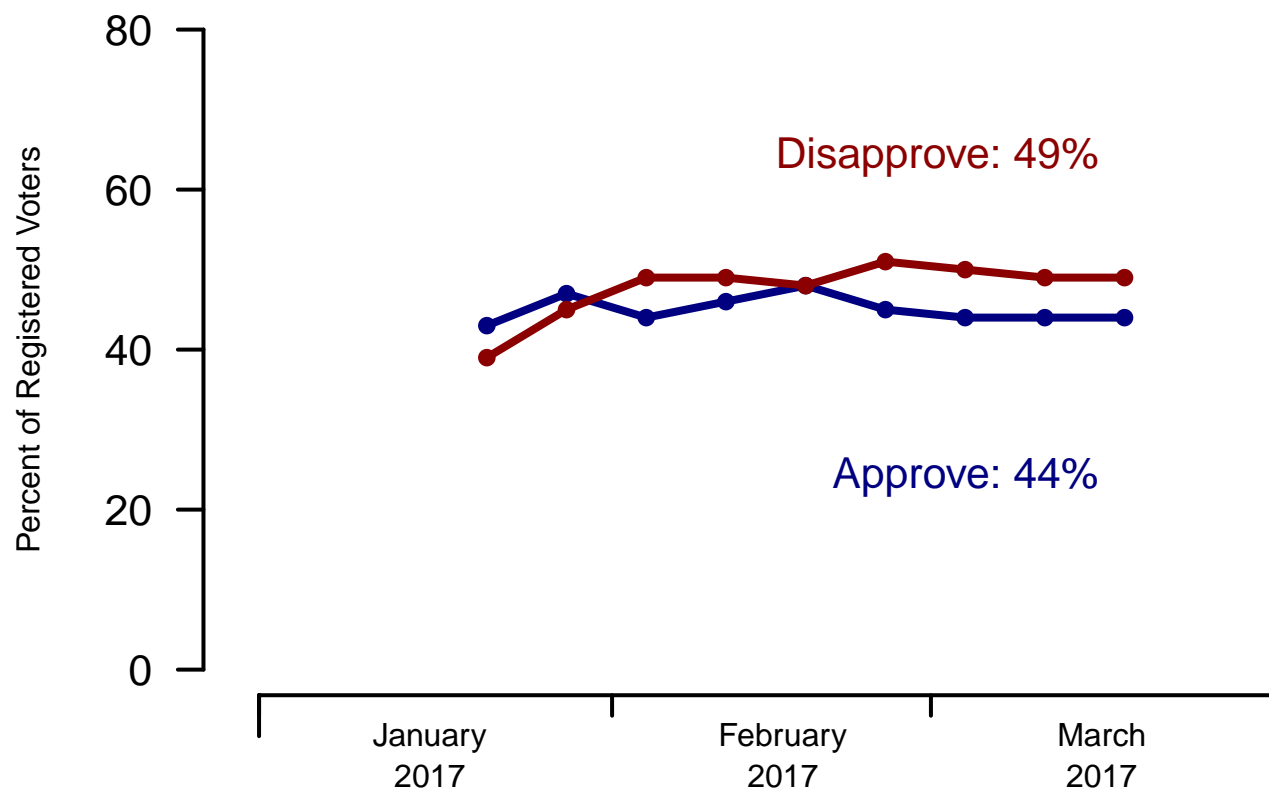


Figure 2: Trump Approval – Registered Voters

Presidential Job Approval

"Do you approve or disapprove of the way
[President's Name] is handling his job as President?"

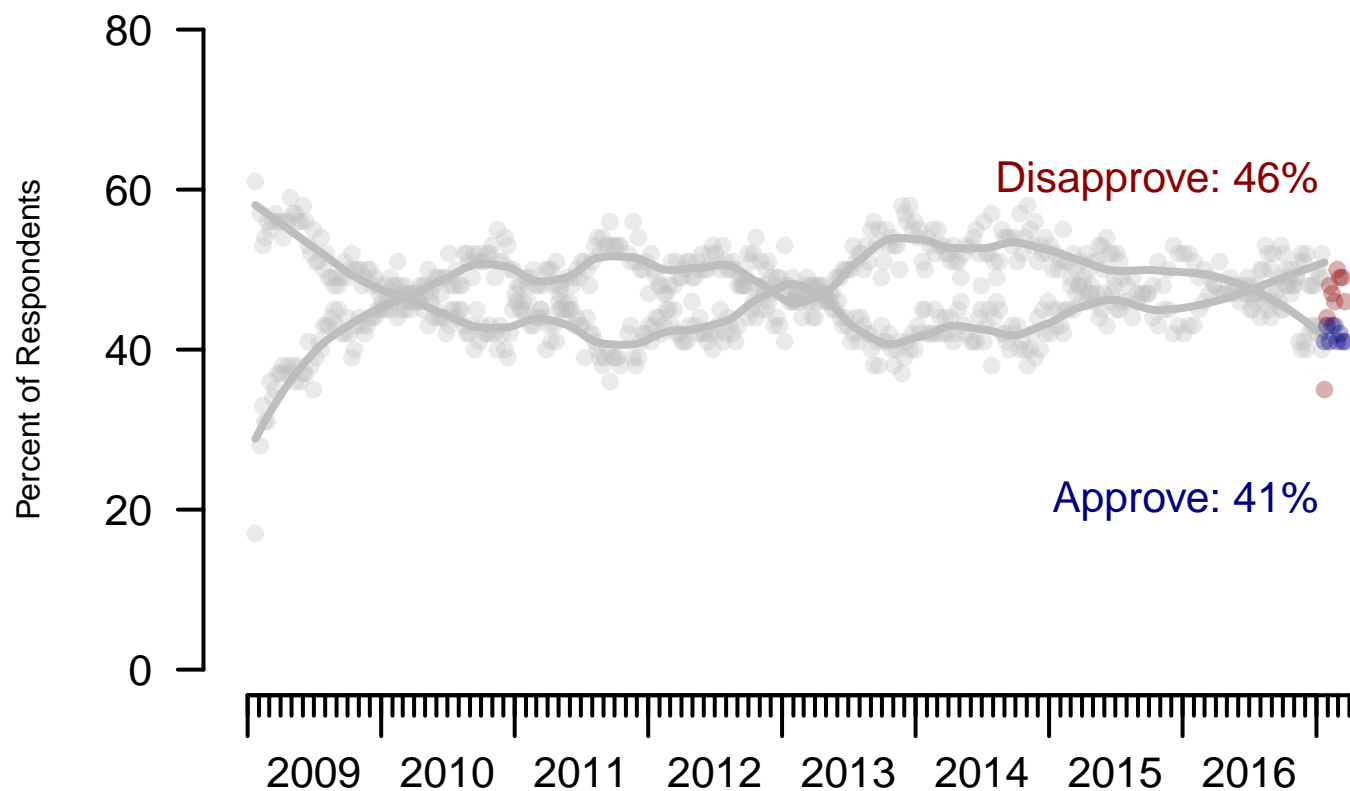


Figure 3: Presidential Approval – All Adults

Presidential Job Approval

"Do you approve or disapprove of the way
[President's Name] is handling his job as President?"

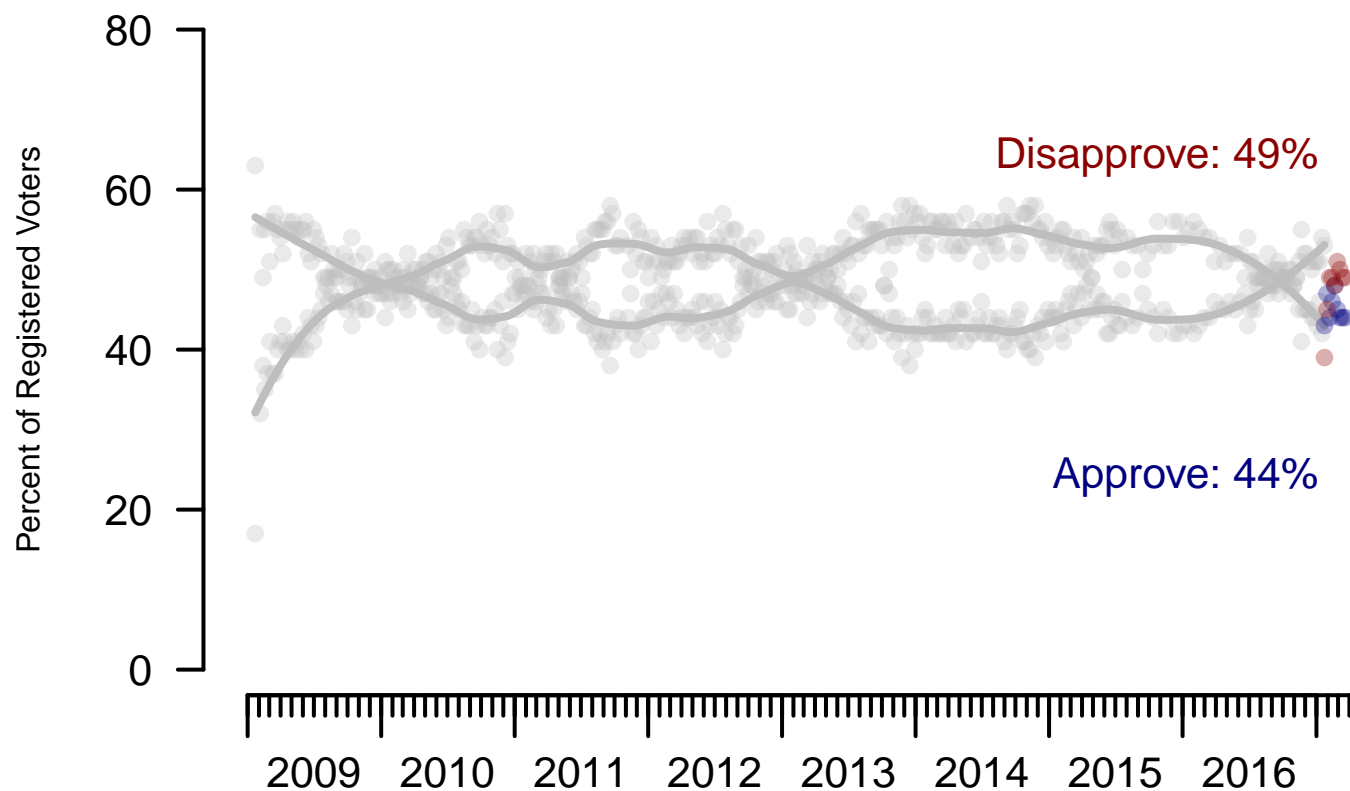


Figure 4: Presidential Approval – Registered Voters

2. President Trump Job Approval – This Week – All Adults

Do you approve or disapprove of the way Donald Trump is handling his job as President?

	Age (4 category)					Race			Census Region			
	Total	Under 30	30-44	45-64	65+	White	Black	Hispanic	North-east	Mid-west	South	West
Strongly approve	22%	13%	14%	26%	35%	27%	5%	11%	20%	19%	28%	20%
Somewhat approve	19%	19%	22%	19%	17%	21%	11%	19%	18%	19%	19%	22%
Somewhat disapprove	10%	13%	11%	8%	10%	11%	9%	9%	9%	15%	8%	10%
Strongly disapprove	36%	36%	37%	37%	33%	32%	55%	38%	40%	37%	33%	36%
Not sure	12%	19%	16%	9%	5%	9%	20%	23%	14%	10%	12%	12%
Totals (Unweighted N)	100% (1,500)	100% (297)	100% (393)	100% (553)	100% (257)	100% (1,205)	100% (169)	100% (126)	100% (310)	100% (362)	100% (515)	100% (313)

	Party ID				Ideology			Gender		Family Income (3 category)			
	Total	Dem	Ind	Rep	Lib	Mod	Con	Male	Female	Under 50	50-100	100+	Prefer not to say
Strongly approve	22%	6%	16%	53%	6%	13%	47%	25%	20%	21%	25%	26%	22%
Somewhat approve	19%	13%	19%	28%	8%	20%	27%	22%	17%	20%	22%	17%	15%
Somewhat disapprove	10%	11%	11%	9%	10%	10%	11%	10%	10%	11%	10%	6%	11%
Strongly disapprove	36%	65%	33%	5%	70%	36%	10%	35%	37%	35%	34%	50%	33%
Not sure	12%	6%	21%	5%	5%	21%	5%	8%	15%	13%	9%	2%	19%
Totals (Unweighted N)	100% (1,500)	100% (570)	100% (569)	100% (361)	100% (476)	100% (601)	100% (423)	100% (652)	100% (848)	100% (728)	100% (400)	100% (187)	100% (185)

3. Approval of U.S. Congress – Historical

Overall, do you approve or disapprove of the way that the United States Congress is handling its job?

All Adults								
	Total Approve	Total Disapprove	Strongly Approve	Somewhat Approve	Neutral	Somewhat Disapprove	Strongly Disapprove	Not Sure
March 17-21, 2017	15%	51%	4%	11%	17%	20%	31%	16%
March 10-14, 2017	16%	48%	3%	13%	20%	19%	29%	15%
March 3-7, 2017	17%	50%	5%	12%	19%	19%	31%	15%
February 25-27, 2017	17%	47%	3%	14%	21%	18%	29%	15%
February 18-20, 2017	20%	49%	5%	15%	17%	19%	30%	15%
February 11-13, 2017	16%	49%	3%	13%	18%	19%	30%	16%
February 4-6, 2017	15%	48%	4%	11%	17%	21%	27%	19%
January 28-30, 2017	18%	49%	4%	14%	17%	19%	30%	17%
January 21-23, 2017	12%	51%	3%	9%	21%	20%	31%	16%
January 14-16, 2017	13%	55%	4%	9%	16%	21%	34%	15%
One Year Ago	13%	58%	4%	9%	20%	22%	36%	10%

Registered Voters								
	Total Approve	Total Disapprove	Strongly Approve	Somewhat Approve	Neutral	Somewhat Disapprove	Strongly Disapprove	Not Sure
March 17-21, 2017	14%	56%	3%	11%	18%	21%	35%	11%
March 10-14, 2017	18%	53%	3%	15%	17%	20%	33%	11%
March 3-7, 2017	17%	57%	5%	12%	17%	23%	34%	11%
February 25-27, 2017	17%	56%	3%	14%	18%	21%	35%	8%
February 18-20, 2017	19%	56%	5%	14%	15%	20%	36%	9%
February 11-13, 2017	19%	55%	4%	15%	17%	21%	34%	10%
February 4-6, 2017	16%	53%	5%	11%	16%	23%	30%	14%
January 28-30, 2017	19%	55%	5%	14%	16%	21%	34%	9%
January 21-23, 2017	12%	58%	3%	9%	20%	21%	37%	10%
January 14-16, 2017	14%	61%	4%	10%	14%	23%	38%	11%
One Year Ago	12%	65%	3%	9%	16%	24%	41%	6%

Congress Approval

"Do you approve of the way the
U.S. Congress is handling its job?"

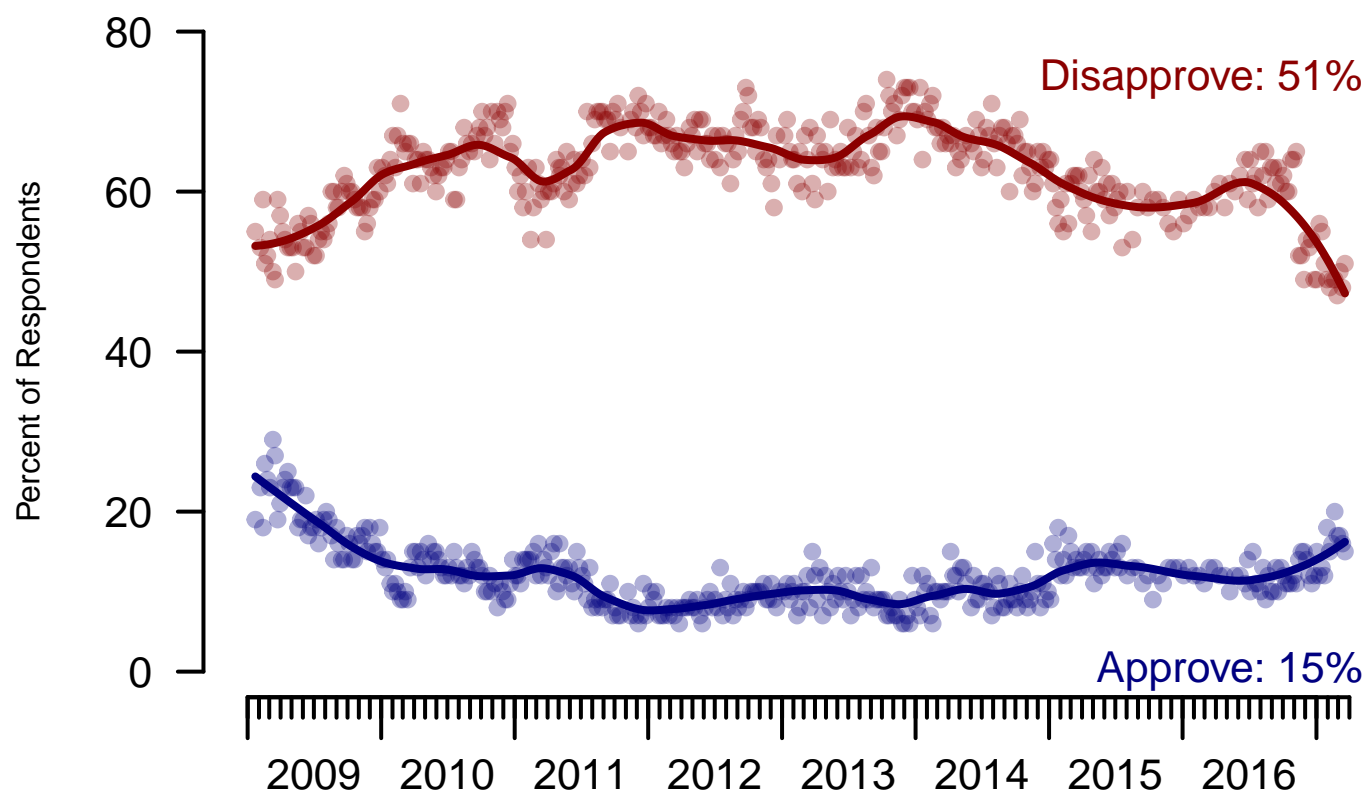


Figure 5: Congress Approval – All Adults

Congress Approval

"Do you approve of the way the
U.S. Congress is handling its job?"

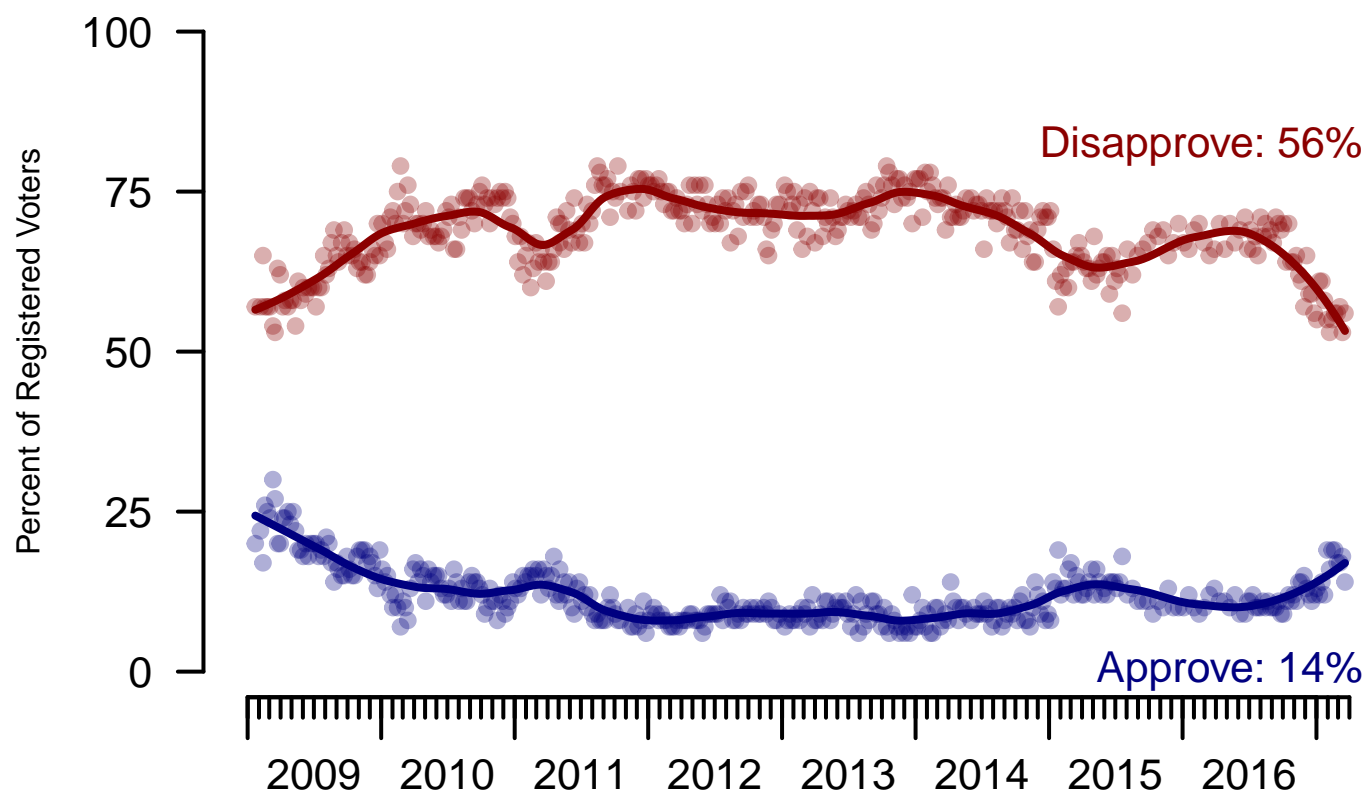


Figure 6: Congress Approval – Registered Voters

4. Approval of U.S. Congress – This Week – All Adults

Overall, do you approve or disapprove of the way that the United States Congress is handling its job?

	Age (4 category)					Race			Census Region			
	Total	Under 30	30-44	45-64	65+	White	Black	Hispanic	North-east	Mid-west	South	West
Strongly approve	4%	8%	4%	3%	2%	4%	3%	3%	5%	3%	4%	4%
Somewhat approve	11%	8%	14%	12%	11%	12%	4%	17%	7%	11%	15%	9%
Neither approve nor disapprove	17%	22%	14%	18%	14%	17%	21%	17%	23%	16%	15%	18%
Somewhat disapprove	20%	16%	16%	21%	25%	21%	19%	13%	21%	18%	21%	16%
Strongly disapprove	31%	23%	26%	34%	41%	32%	34%	25%	26%	35%	30%	35%
Not sure	16%	23%	25%	12%	7%	14%	20%	25%	19%	17%	14%	17%
Totals (Unweighted N)	100% (1,487)	100% (290)	100% (389)	100% (551)	100% (257)	100% (1,196)	100% (167)	100% (124)	100% (308)	100% (360)	100% (511)	100% (308)

	Party ID				Ideology			Gender		Family Income (3 category)			
	Total	Dem	Ind	Rep	Lib	Mod	Con	Male	Female	Under 50	50-100	100+	Prefer not to say
Strongly approve	4%	4%	2%	7%	6%	4%	3%	5%	3%	4%	3%	5%	4%
Somewhat approve	11%	6%	7%	24%	7%	8%	19%	14%	9%	12%	14%	9%	7%
Neither approve nor disapprove	17%	17%	16%	21%	11%	19%	20%	13%	21%	20%	18%	11%	12%
Somewhat disapprove	20%	20%	19%	19%	19%	17%	23%	22%	18%	17%	24%	20%	21%
Strongly disapprove	31%	40%	33%	18%	51%	28%	20%	34%	29%	28%	29%	48%	35%
Not sure	16%	13%	22%	12%	6%	24%	15%	12%	20%	19%	12%	7%	21%
Totals (Unweighted N)	100% (1,487)	100% (567)	100% (563)	100% (357)	100% (476)	100% (592)	100% (419)	100% (649)	100% (838)	100% (723)	100% (397)	100% (187)	100% (180)

5. Direction of country – Historical

Would you say things in this country today are...

	All Adults		
	Right Direction	Wrong Track	Not Sure
March 17-21, 2017	34%	51%	15%
March 10-14, 2017	32%	50%	18%
March 3-7, 2017	32%	52%	17%
February 25-27, 2017	33%	50%	17%
February 18-20, 2017	33%	51%	16%
February 11-13, 2017	29%	53%	18%
February 4-6, 2017	30%	53%	17%
January 28-30, 2017	33%	51%	16%
January 21-23, 2017	28%	53%	19%
January 14-16, 2017	24%	57%	19%
One Year Ago	26%	63%	12%

	Registered Voters		
	Right Direction	Wrong Track	Not Sure
March 17-21, 2017	34%	53%	13%
March 10-14, 2017	35%	51%	14%
March 3-7, 2017	33%	53%	14%
February 25-27, 2017	36%	53%	11%
February 18-20, 2017	34%	53%	13%
February 11-13, 2017	31%	52%	16%
February 4-6, 2017	31%	55%	14%
January 28-30, 2017	35%	52%	13%
January 21-23, 2017	29%	55%	16%
January 14-16, 2017	23%	61%	15%
One Year Ago	25%	65%	10%

Direction of Country

"Would you say things in this country today are generally headed in the right direction or off on the wrong track?"

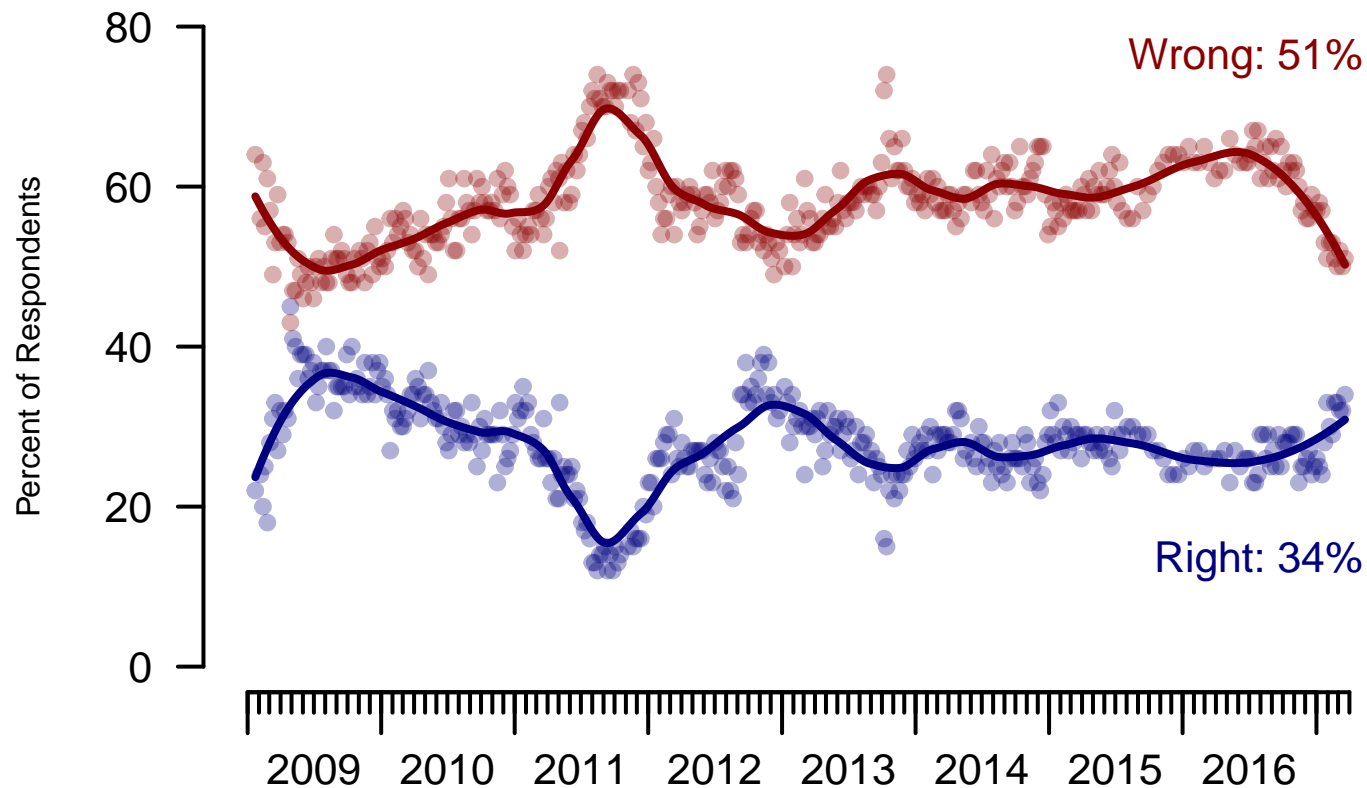


Figure 7: Direction of Country – All Adults

Direction of Country

"Would you say things in this country today are generally headed in the right direction or off on the wrong track?"

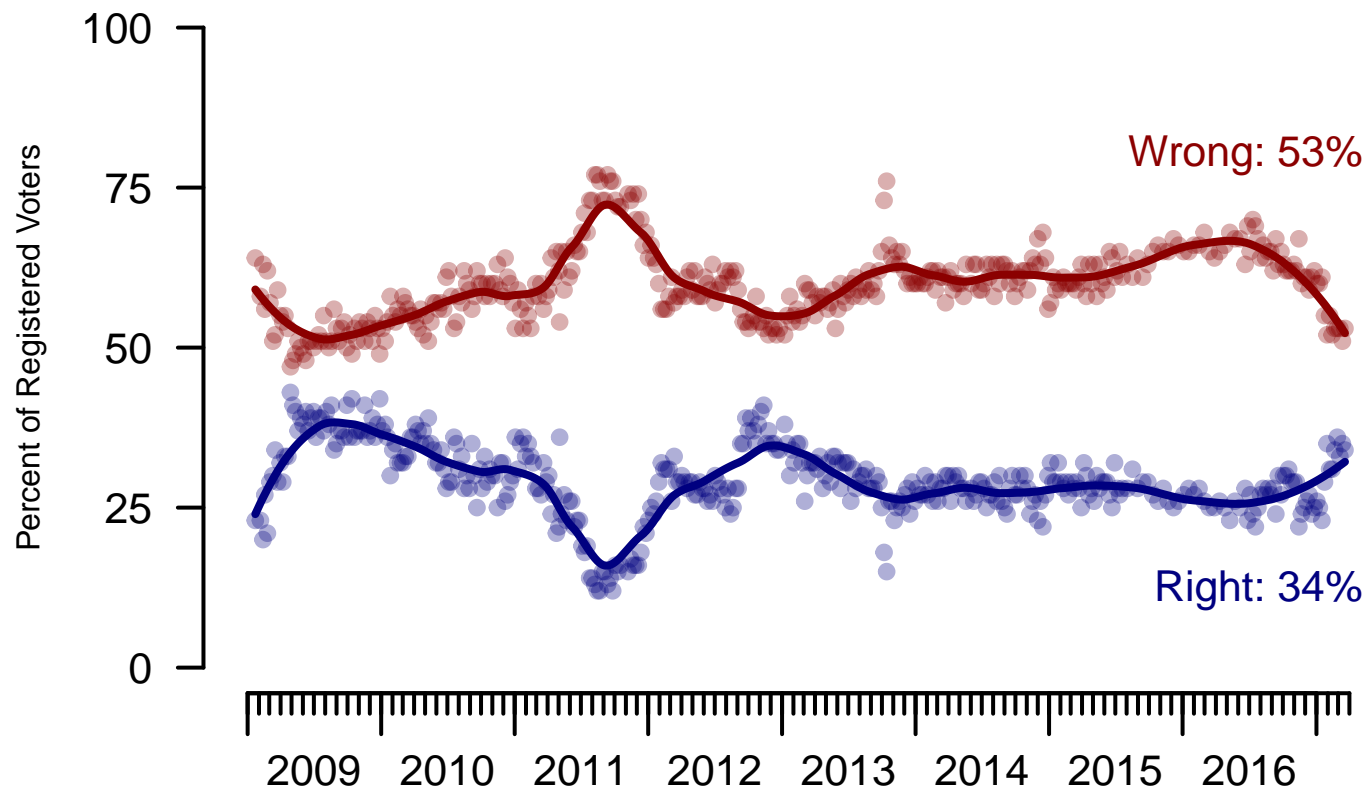


Figure 8: Direction of Country – Registered Voters

6. Direction of Country – This Week – All Adults

Would you say things in this country today are...

	Total	Age (4 category)				Race			Census Region			
		Under 30	30-44	45-64	65+	White	Black	Hispanic	North-east	Mid-west	South	West
Generally headed in the right direction	34%	33%	29%	33%	42%	37%	17%	31%	30%	32%	35%	36%
Off on the wrong track	51%	49%	57%	51%	47%	49%	68%	46%	52%	55%	50%	49%
Not sure	15%	18%	14%	16%	12%	14%	16%	23%	18%	12%	15%	16%
Totals (Unweighted N)	100% (1,500)	100% (297)	100% (393)	100% (553)	100% (257)	100% (1,205)	100% (169)	100% (126)	100% (310)	100% (362)	100% (515)	100% (313)

	Total	Party ID			Ideology			Gender		Family Income (3 category)			
		Dem	Ind	Rep	Lib	Mod	Con	Male	Female	Under 50	50-100	100+	Prefer not to say
Generally headed in the right direction	34%	20%	26%	62%	15%	28%	55%	41%	27%	34%	37%	37%	22%
Off on the wrong track	51%	72%	50%	27%	77%	51%	32%	46%	56%	50%	49%	57%	57%
Not sure	15%	8%	23%	11%	9%	21%	12%	13%	17%	16%	13%	5%	21%
Totals (Unweighted N)	100% (1,500)	100% (570)	100% (569)	100% (361)	100% (476)	100% (601)	100% (423)	100% (652)	100% (848)	100% (728)	100% (400)	100% (187)	100% (185)

Sponsorship	<i>The Economist</i>
Fieldwork	YouGov
Interviewing Dates	March 19 - 21, 2017
Target population	U.S. citizens, aged 18 and over.
Sampling method	Respondents were selected from YouGov's opt-in Internet panel using sample matching. A random sample (stratified by age, gender, race, education, and region) was selected from the 2014 American Community Study. Voter registration was imputed from the November 2014 Current Population Survey Registration and Voting Supplement.
Weighting	The sample was weighted based on age, gender, race, education, and 2016 Presidential vote. The weights range from 0.16 to 6.18, with a mean of one and a standard deviation of 0.8.
Number of respondents	1500
Margin of error	± 3.3% (adjusted for weighting)
Margin of error (Registered Voters)	± 3.6% (adjusted for weighting)
Survey mode	Web-based interviews
Full results	Available online at http://today.yougov.com/news/categories/economist/ .