

Interviewing: October 30 - November 1, 2016  
Sample: 1388 registered voters nationwide online



# *The Economist*/YouGov Poll

## Weekly Tracking

For immediate release

**1. Approval of Obama as President – Historical**

Do you approve or disapprove of the way Barack Obama is handling his job as President?

	Registered Voters						
	Total Approve	Total Disapprove	Strongly Approve	Somewhat Approve	Somewhat Disapprove	Strongly Disapprove	Not Sure
October 28-November 1, 2016	48%	48%	29%	19%	12%	36%	3%
October 21-25, 2016	47%	50%	29%	18%	13%	37%	3%
October 14-18, 2016	50%	48%	29%	21%	9%	39%	2%
October 8-10, 2016	49%	49%	28%	21%	11%	38%	1%
October 1-3, 2016	49%	49%	28%	21%	11%	38%	2%
September 24-26, 2016	50%	49%	28%	22%	10%	39%	2%
September 17-19, 2016	47%	51%	26%	21%	13%	38%	2%
September 10-12, 2016	48%	50%	25%	23%	11%	39%	2%
September 3-5, 2016	50%	48%	26%	24%	10%	38%	2%
August 27-29, 2016	48%	49%	26%	22%	11%	38%	2%
One Year Ago	42%	56%	20%	22%	13%	43%	2%

## Obama Approval

"Do you approve or disapprove of the way  
Barack Obama is handling his job as President?"

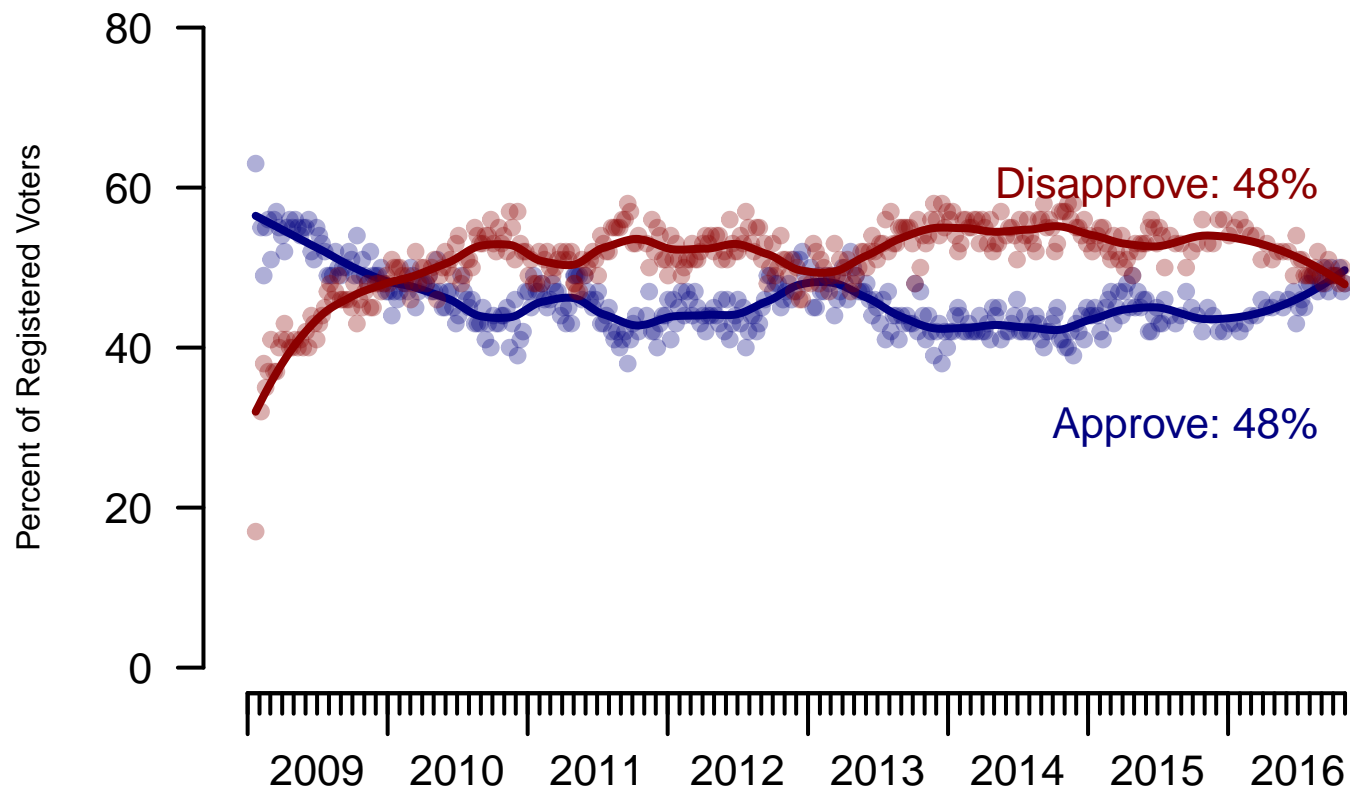


Figure 1: Obama Approval – Registered Voters

**2. Approval of Obama as President – This Week – Registered Voters**

Do you approve or disapprove of the way Barack Obama is handling his job as President?

	Age (4 category)					Race			Census Region			
	Total	Under 30	30-44	45-64	65+	White	Black	Hispanic	North-east	Mid-west	South	West
Strongly Approve	29%	32%	34%	27%	26%	23%	57%	40%	31%	28%	26%	33%
Somewhat Approve	19%	34%	17%	20%	11%	17%	28%	26%	19%	21%	19%	20%
Somewhat Disapprove	12%	15%	13%	12%	10%	13%	5%	15%	15%	13%	12%	11%
Strongly Disapprove	36%	14%	32%	39%	53%	45%	4%	11%	34%	35%	39%	34%
Not Sure	3%	5%	5%	3%	—	2%	6%	8%	2%	3%	4%	2%
Totals (Unweighted N)	100% (1,388)	100% (260)	100% (327)	100% (589)	100% (212)	100% (1,128)	100% (146)	100% (114)	100% (281)	100% (321)	100% (516)	100% (270)

	Party ID				Ideology			Gender		Family Income (3 category)			
	Total	Dem	Ind	Rep	Lib	Mod	Con	Male	Female	Under 50	50-100	100+	Prefer not to say
Strongly Approve	29%	60%	14%	3%	59%	26%	8%	28%	30%	32%	26%	31%	21%
Somewhat Approve	19%	26%	23%	6%	29%	26%	6%	17%	22%	20%	18%	19%	20%
Somewhat Disapprove	12%	7%	14%	19%	6%	15%	15%	13%	12%	12%	12%	14%	12%
Strongly Disapprove	36%	4%	45%	72%	6%	27%	70%	40%	33%	31%	41%	36%	44%
Not Sure	3%	3%	5%	1%	1%	7%	1%	2%	4%	5%	2%	0%	3%
Totals (Unweighted N)	100% (1,388)	100% (589)	100% (507)	100% (292)	100% (456)	100% (533)	100% (399)	100% (630)	100% (758)	100% (615)	100% (419)	100% (212)	100% (142)

### 3. Approval of U.S. Congress – Historical

Overall, do you approve or disapprove of the way that the United States Congress is handling its job?

	Registered Voters							
	Total Approve	Total Disapprove	Strongly Approve	Somewhat Approve	Neutral	Somewhat Disapprove	Strongly Disapprove	Not Sure
October 28-November 1, 2016	12%	64%	3%	9%	17%	24%	40%	7%
October 21-25, 2016	11%	64%	3%	8%	17%	25%	39%	8%
October 14-18, 2016	12%	70%	3%	9%	13%	26%	44%	6%
October 8-10, 2016	11%	64%	2%	9%	18%	22%	42%	7%
October 1-3, 2016	9%	70%	3%	6%	16%	24%	46%	6%
September 24-26, 2016	9%	69%	3%	6%	15%	26%	43%	7%
September 17-19, 2016	11%	70%	3%	8%	15%	25%	45%	4%
September 10-12, 2016	10%	71%	2%	8%	14%	26%	45%	6%
September 3-5, 2016	10%	67%	3%	7%	16%	22%	45%	7%
August 27-29, 2016	10%	69%	3%	7%	13%	26%	43%	6%
One Year Ago	11%	68%	3%	8%	16%	24%	44%	5%

## Congress Approval

"Do you approve of the way the  
U.S. Congress is handling its job?"

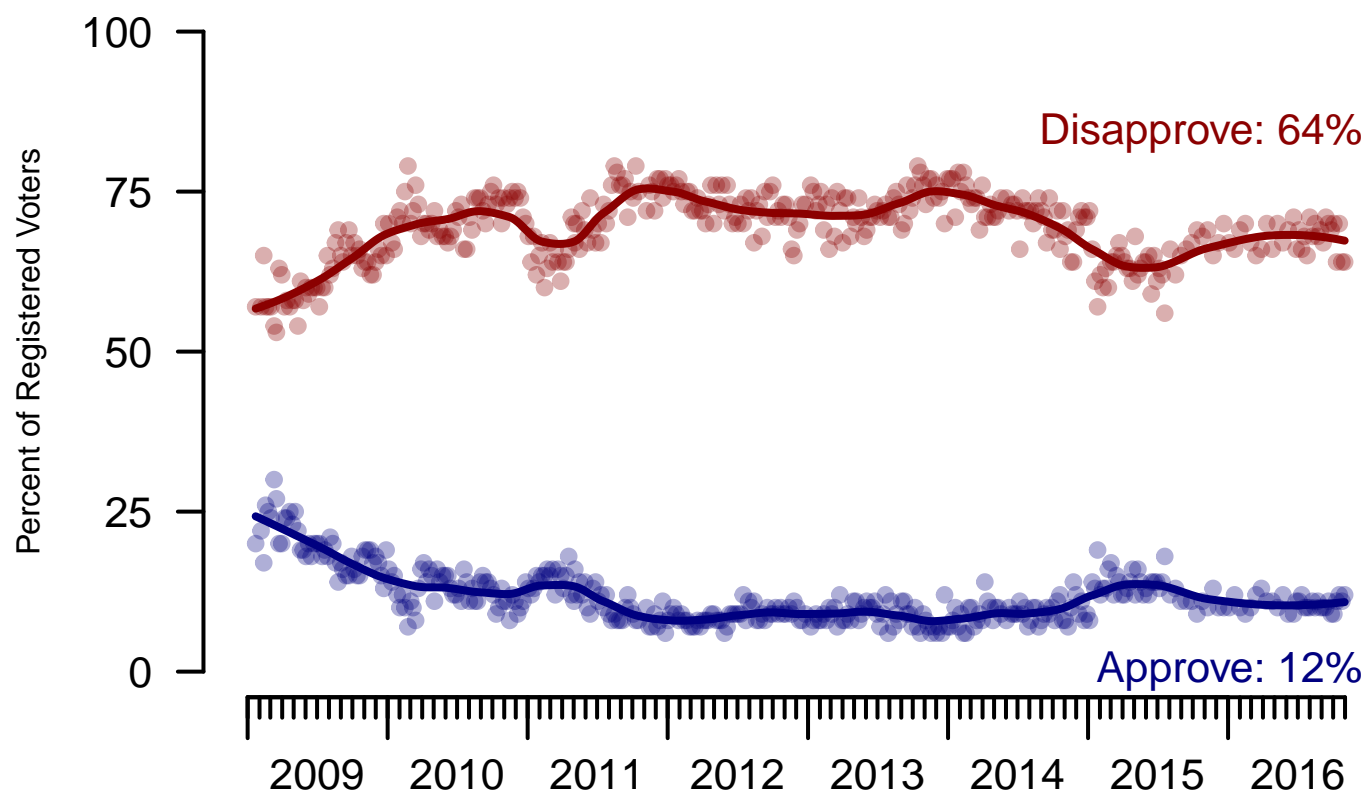


Figure 2: Congress Approval – Registered Voters

**4. Approval of U.S. Congress – This Week – Registered Voters**

Overall, do you approve or disapprove of the way that the United States Congress is handling its job?

	Age (4 category)					Race			Census Region			
	Total	Under 30	30-44	45-64	65+	White	Black	Hispanic	North-east	Mid-west	South	West
Strongly approve	3%	7%	5%	1%	2%	2%	7%	7%	4%	3%	3%	5%
Somewhat approve	9%	15%	10%	8%	6%	7%	16%	15%	8%	8%	10%	10%
Neither approve nor disapprove	17%	17%	17%	18%	14%	15%	21%	28%	21%	16%	15%	16%
Somewhat disapprove	24%	19%	20%	24%	32%	26%	15%	18%	25%	19%	26%	25%
Strongly disapprove	40%	33%	37%	42%	44%	44%	30%	24%	37%	45%	39%	39%
Not sure	7%	10%	10%	6%	2%	6%	12%	8%	6%	9%	7%	4%
Totals (Unweighted N)	100% (1,363)	100% (254)	100% (322)	100% (578)	100% (209)	100% (1,111)	100% (142)	100% (110)	100% (274)	100% (317)	100% (505)	100% (267)

	Party ID				Ideology			Gender		Family Income (3 category)			
	Total	Dem	Ind	Rep	Lib	Mod	Con	Male	Female	Under 50	50-100	100+	Prefer not to say
Strongly approve	3%	6%	2%	1%	3%	4%	3%	3%	4%	4%	2%	3%	2%
Somewhat approve	9%	12%	6%	10%	7%	11%	8%	10%	9%	9%	10%	6%	10%
Neither approve nor disapprove	17%	17%	13%	21%	10%	19%	20%	15%	19%	19%	18%	12%	11%
Somewhat disapprove	24%	16%	26%	34%	15%	22%	33%	24%	24%	22%	26%	24%	27%
Strongly disapprove	40%	41%	47%	28%	61%	33%	31%	46%	35%	37%	39%	51%	42%
Not sure	7%	7%	7%	5%	4%	10%	5%	3%	10%	9%	5%	4%	8%
Totals (Unweighted N)	100% (1,363)	100% (577)	100% (500)	100% (286)	100% (452)	100% (519)	100% (392)	100% (624)	100% (739)	100% (603)	100% (411)	100% (210)	100% (139)

**5. Direction of country – Historical**

Would you say things in this country today are...

	Registered Voters		
	Right Direction	Wrong Track	Not Sure
October 28-November 1, 2016	29%	63%	8%
October 21-25, 2016	29%	62%	8%
October 14-18, 2016	31%	62%	7%
October 8-10, 2016	30%	62%	8%
October 1-3, 2016	30%	63%	7%
September 24-26, 2016	27%	65%	8%
September 17-19, 2016	30%	63%	7%
September 10-12, 2016	24%	67%	9%
September 3-5, 2016	28%	62%	10%
August 27-29, 2016	27%	65%	8%
One Year Ago	26%	66%	8%



## Direction of Country

"Would you say things in this country today are generally headed in the right direction or off on the wrong track?"

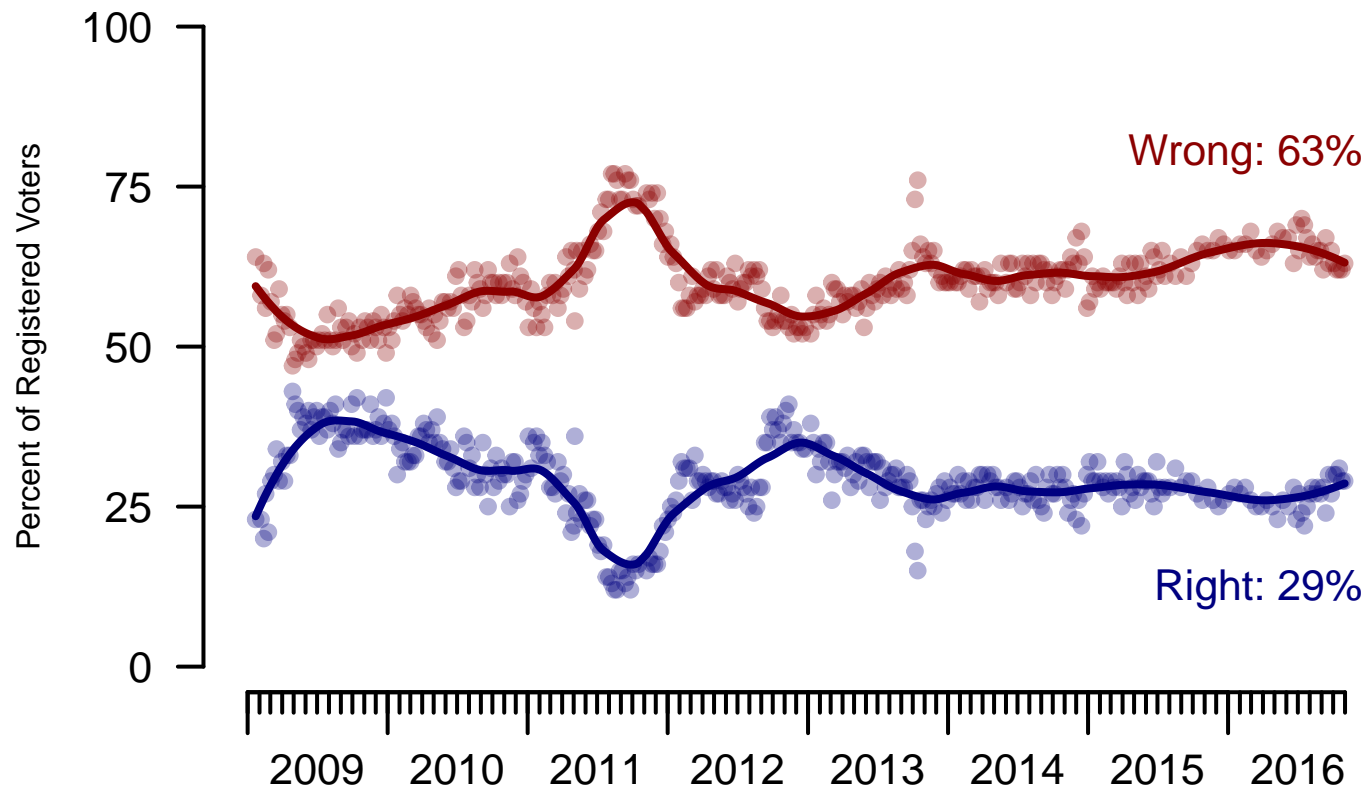


Figure 3: Direction of Country – Registered Voters

**6. Direction of Country – This Week – Registered Voters**

Would you say things in this country today are...

	Age (4 category)					Race			Census Region			
	Total	Under 30	30-44	45-64	65+	White	Black	Hispanic	North-east	Mid-west	South	West
Generally headed in the right direction	29%	36%	32%	28%	24%	24%	47%	42%	27%	25%	30%	34%
Off on the wrong track	63%	53%	61%	65%	70%	69%	39%	44%	65%	66%	62%	58%
Not sure	8%	11%	7%	8%	6%	6%	14%	14%	8%	9%	8%	8%
Totals (Unweighted N)	100% (1,388)	100% (260)	100% (327)	100% (589)	100% (212)	100% (1,128)	100% (146)	100% (114)	100% (281)	100% (321)	100% (516)	100% (270)

	Party ID				Ideology			Gender		Family Income (3 category)			
	Total	Dem	Ind	Rep	Lib	Mod	Con	Male	Female	Under 50	50-100	100+	Prefer not to say
Generally headed in the right direction	29%	54%	18%	6%	56%	30%	7%	31%	27%	30%	30%	35%	17%
Off on the wrong track	63%	35%	73%	92%	35%	59%	89%	62%	64%	61%	65%	59%	70%
Not sure	8%	11%	8%	3%	9%	11%	4%	6%	9%	9%	6%	7%	13%
Totals (Unweighted N)	100% (1,388)	100% (589)	100% (507)	100% (292)	100% (456)	100% (533)	100% (399)	100% (630)	100% (758)	100% (615)	100% (419)	100% (212)	100% (142)

<b>Sponsorship</b>	<i>The Economist</i>
<b>Fieldwork</b>	YouGov
<b>Interviewing Dates</b>	October 30 - November 1, 2016
<b>Target population</b>	Registered Voters
<b>Sampling method</b>	Respondents were selected from YouGov's opt-in Internet panel using sample matching. A random sample (stratified by gender, age, race, education, and region) was selected from the 2014 American Community Study. Voter registration was imputed from the November 2014 Current Population Survey Registration and Voting Supplement.
<b>Weighting</b>	The sample was weighted based on gender, age, race, education, region, and 2012 Presidential vote. The weights range from 0.21 to 5.44, with a mean of one and a standard deviation of 0.5.
<b>Number of respondents</b>	1388
<b>Margin of error</b>	± 3% (adjusted for weighting)
<b>Survey mode</b>	Web-based interviews
<b>Full results</b>	Available online at <a href="http://today.yougov.com/news/categories/economist/">http://today.yougov.com/news/categories/economist/</a> .