

Interviewing: June 18 - 20, 2017  
Sample: 1500 Adults nationwide online  
1102 registered voters nationwide online



# *The Economist/YouGov* Poll

## Weekly Tracking

For immediate release

**1. Presidential Job Approval – Historical**

Do you approve or disapprove of the way [President's name] is handling his job as President?

	All Adults						
	Total Approve	Total Disapprove	Strongly Approve	Somewhat Approve	Somewhat Disapprove	Strongly Disapprove	Not Sure
June 16-20, 2017	40%	49%	19%	21%	10%	39%	11%
June 9-13, 2017	39%	52%	20%	19%	13%	39%	10%
June 2-6, 2017	38%	54%	18%	20%	12%	42%	9%
May 27-29, 2017	38%	51%	17%	21%	13%	38%	11%
May 20-22, 2017	39%	51%	19%	20%	12%	39%	11%
May 13-15, 2017	39%	51%	19%	20%	12%	39%	10%
May 6-8, 2017	41%	51%	20%	21%	11%	40%	8%
April 29-May 1, 2017	43%	47%	22%	21%	12%	35%	11%
April 22-24, 2017	42%	49%	23%	19%	12%	37%	10%
April 15-17, 2017	41%	49%	22%	19%	13%	36%	11%
One Year Ago	47%	48%	22%	25%	12%	36%	5%

	Registered Voters						
	Total Approve	Total Disapprove	Strongly Approve	Somewhat Approve	Somewhat Disapprove	Strongly Disapprove	Not Sure
June 16-20, 2017	43%	51%	22%	21%	9%	42%	6%
June 9-13, 2017	42%	51%	24%	18%	9%	42%	6%
June 2-6, 2017	40%	56%	21%	19%	11%	45%	5%
May 27-29, 2017	40%	53%	20%	20%	11%	42%	7%
May 20-22, 2017	40%	53%	21%	19%	10%	43%	7%
May 13-15, 2017	39%	54%	21%	18%	10%	44%	6%
May 6-8, 2017	43%	52%	22%	21%	9%	43%	5%
April 29-May 1, 2017	46%	47%	25%	21%	11%	36%	7%
April 22-24, 2017	45%	49%	26%	19%	11%	38%	6%
April 15-17, 2017	44%	50%	24%	20%	13%	37%	7%
One Year Ago	47%	49%	22%	25%	10%	39%	3%

## Presidential Job Approval

"Do you approve or disapprove of the way Donald Trump is handling his job as President?"

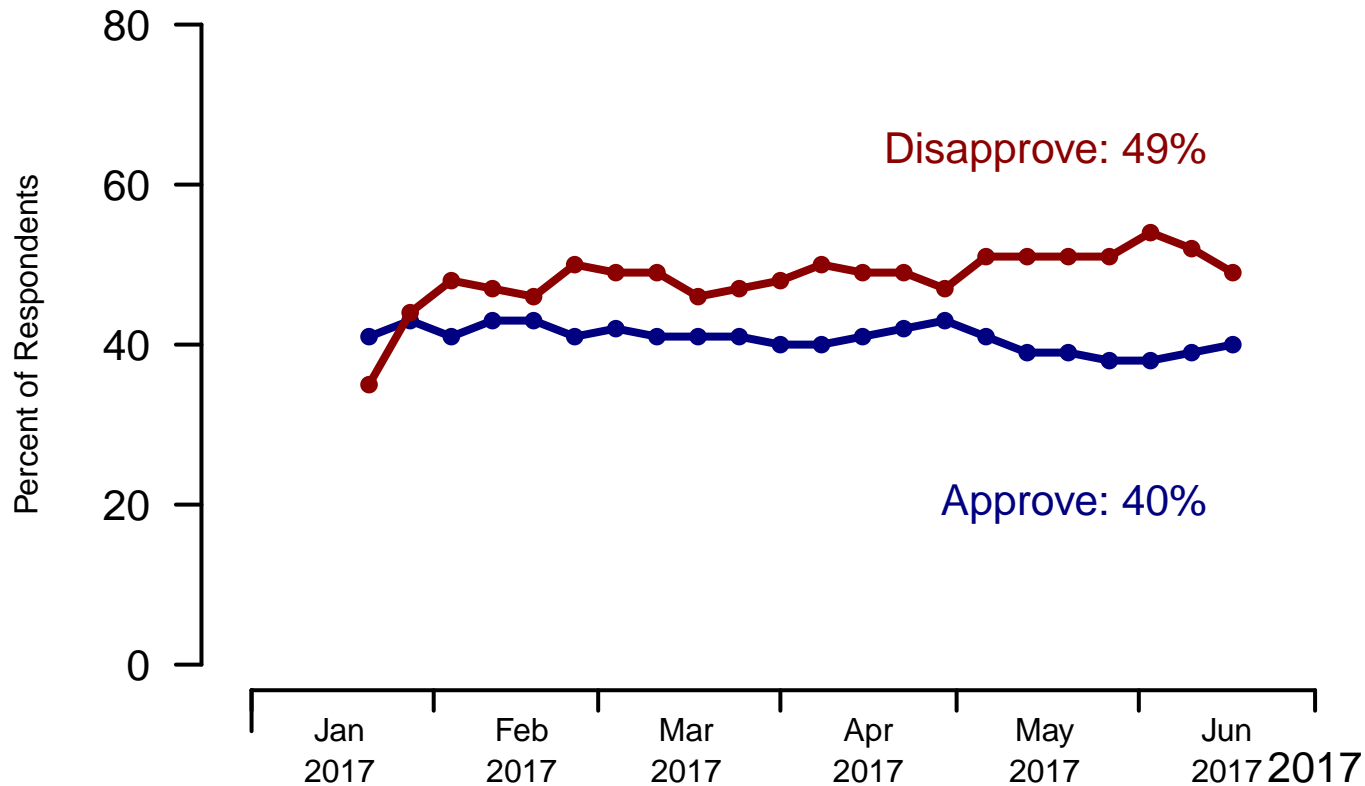


Figure 1: Trump Approval – All Adults

## Presidential Job Approval

"Do you approve or disapprove of the way Donald Trump is handling his job as President?"

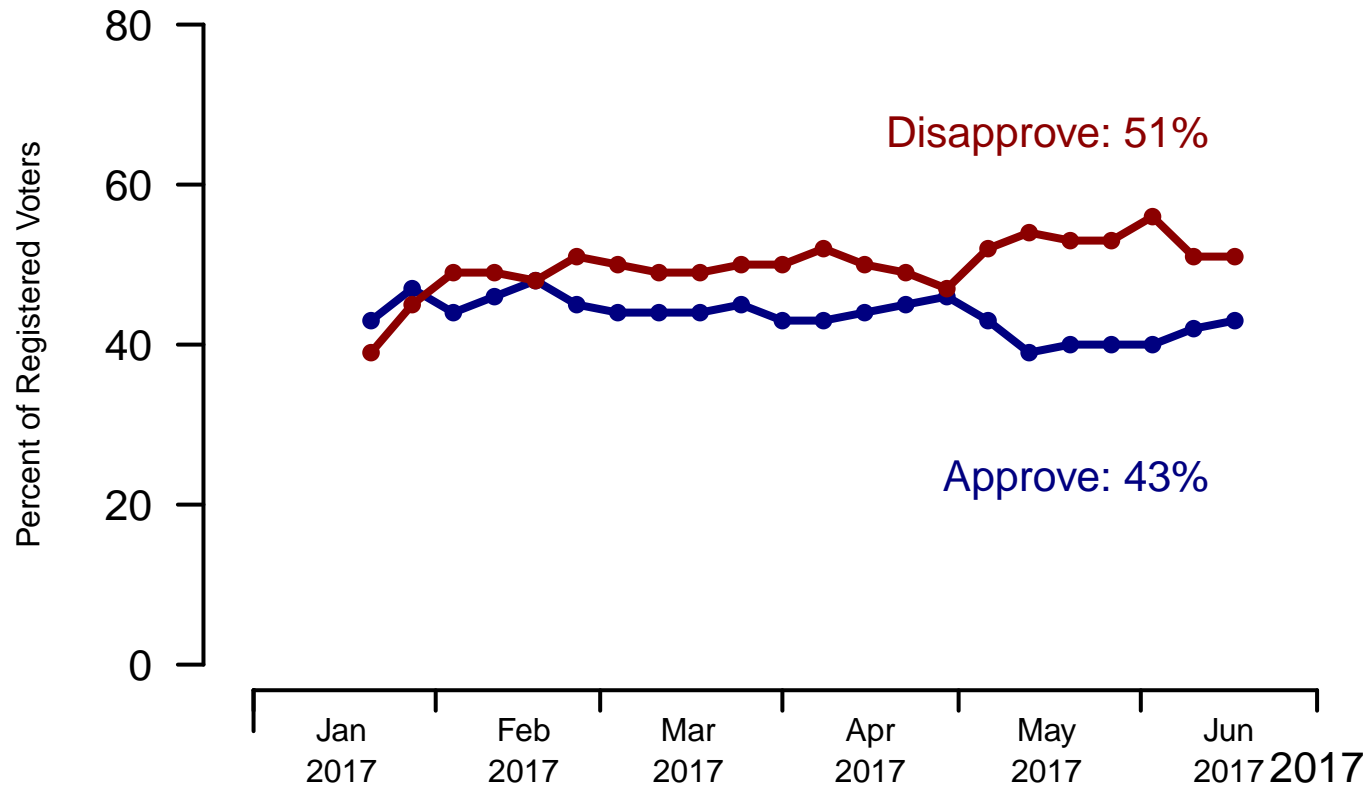


Figure 2: Trump Approval – Registered Voters

**2. President Trump Job Approval – This Week – All Adults**

Do you approve or disapprove of the way Donald Trump is handling his job as President?

	Age (4 category)					Race			Census Region			
	Total	Under 30	30-44	45-64	65+	White	Black	Hispanic	North-east	Mid-west	South	West
Strongly approve	19%	12%	14%	20%	33%	22%	7%	13%	17%	20%	20%	20%
Somewhat approve	21%	20%	20%	26%	16%	24%	8%	17%	19%	22%	22%	22%
Somewhat disapprove	10%	15%	10%	9%	7%	10%	12%	11%	17%	6%	11%	7%
Strongly disapprove	39%	39%	37%	38%	41%	35%	55%	42%	39%	42%	37%	37%
Not sure	11%	14%	20%	7%	2%	9%	18%	17%	8%	11%	10%	15%
Totals (Unweighted N)	100% (1,500)	100% (267)	100% (409)	100% (541)	100% (283)	100% (1,208)	100% (150)	100% (142)	100% (316)	100% (337)	100% (548)	100% (299)

	Party ID			Ideology			Gender		Family Income (3 category)			Prefer not to say	
	Total	Dem	Ind	Rep	Lib	Mod	Con	Male	Female	Under 50	50-100		100+
Strongly approve	19%	6%	15%	43%	5%	12%	41%	19%	20%	17%	20%	24%	22%
Somewhat approve	21%	8%	21%	38%	7%	20%	34%	23%	19%	21%	23%	26%	14%
Somewhat disapprove	10%	9%	12%	9%	7%	13%	9%	12%	9%	11%	10%	7%	10%
Strongly disapprove	39%	71%	34%	7%	76%	35%	11%	37%	40%	38%	42%	40%	34%
Not sure	11%	6%	18%	3%	5%	19%	4%	10%	12%	13%	5%	3%	19%
Totals (Unweighted N)	100% (1,500)	100% (534)	100% (614)	100% (352)	100% (486)	100% (597)	100% (417)	100% (659)	100% (841)	100% (709)	100% (414)	100% (207)	100% (170)

**3. Approval of U.S. Congress – Historical**

Overall, do you approve or disapprove of the way that the United States Congress is handling its job?

	All Adults							
	Total Approve	Total Disapprove	Strongly Approve	Somewhat Approve	Neutral	Somewhat Disapprove	Strongly Disapprove	Not Sure
June 16-20, 2017	12%	55%	3%	9%	16%	22%	33%	17%
June 9-13, 2017	12%	55%	4%	8%	18%	20%	35%	14%
June 2-6, 2017	13%	56%	4%	9%	16%	22%	34%	16%
May 27-29, 2017	11%	57%	3%	8%	16%	21%	36%	16%
May 20-22, 2017	14%	56%	3%	11%	15%	21%	35%	15%
May 13-15, 2017	11%	55%	3%	8%	17%	21%	34%	17%
May 6-8, 2017	13%	57%	3%	10%	16%	23%	34%	13%
April 29-May 1, 2017	12%	54%	3%	9%	18%	21%	33%	16%
April 22-24, 2017	12%	57%	3%	9%	16%	23%	34%	15%
April 15-17, 2017	13%	54%	4%	9%	17%	21%	33%	15%
One Year Ago	11%	64%	3%	8%	16%	23%	41%	9%

	Registered Voters							
	Total Approve	Total Disapprove	Strongly Approve	Somewhat Approve	Neutral	Somewhat Disapprove	Strongly Disapprove	Not Sure
June 16-20, 2017	12%	61%	3%	9%	17%	23%	38%	11%
June 9-13, 2017	11%	61%	3%	8%	18%	21%	40%	9%
June 2-6, 2017	11%	63%	3%	8%	15%	24%	39%	10%
May 27-29, 2017	11%	63%	3%	8%	16%	22%	41%	10%
May 20-22, 2017	13%	65%	3%	10%	12%	25%	40%	11%
May 13-15, 2017	11%	64%	2%	9%	15%	23%	41%	10%
May 6-8, 2017	13%	64%	3%	10%	14%	24%	40%	9%
April 29-May 1, 2017	11%	63%	3%	8%	16%	23%	40%	11%
April 22-24, 2017	13%	61%	3%	10%	15%	24%	37%	11%
April 15-17, 2017	14%	61%	4%	10%	15%	24%	37%	11%
One Year Ago	9%	71%	2%	7%	15%	26%	45%	5%

### Congress Approval

"Do you approve of the way the U.S. Congress is handling its job?"

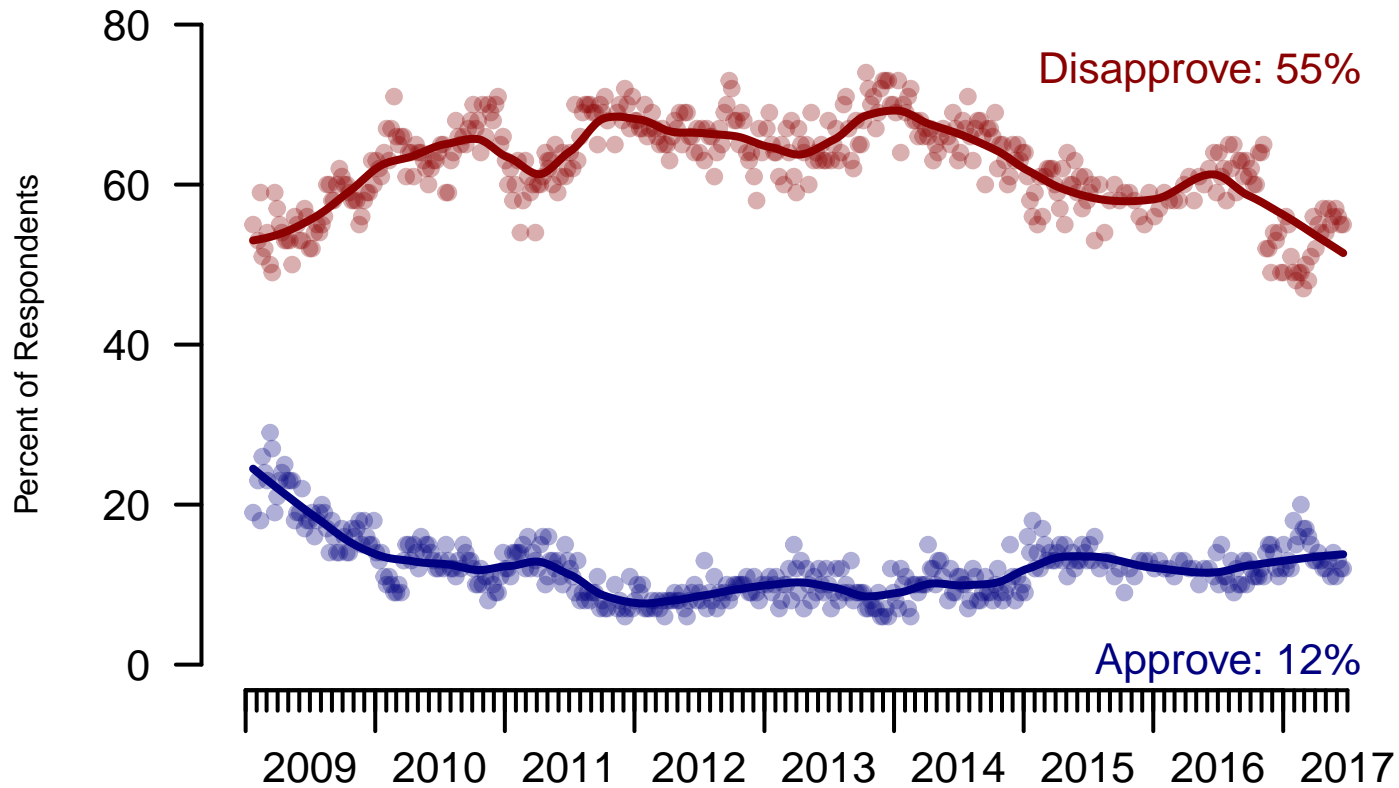


Figure 3: Congress Approval – All Adults

## Congress Approval

"Do you approve of the way the  
U.S. Congress is handling its job?"

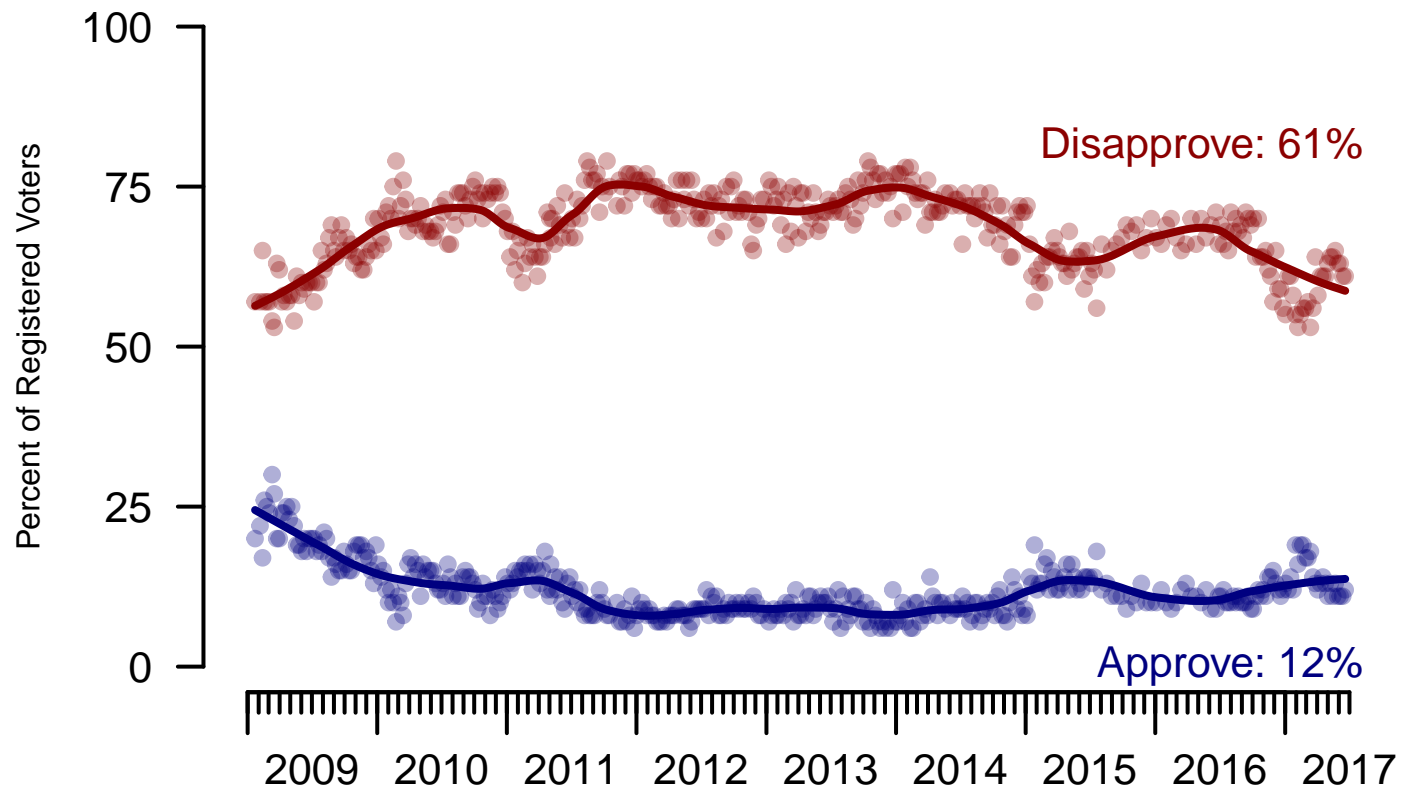


Figure 4: Congress Approval – Registered Voters



**4. Approval of U.S. Congress – This Week – All Adults**

Overall, do you approve or disapprove of the way that the United States Congress is handling its job?

	Age (4 category)					Race			Census Region			
	Total	Under 30	30-44	45-64	65+	White	Black	Hispanic	North-east	Mid-west	South	West
Strongly approve	3%	9%	4%	2%	—	3%	3%	7%	4%	1%	2%	8%
Somewhat approve	9%	11%	11%	8%	6%	9%	4%	15%	8%	8%	11%	7%
Neither approve nor disapprove	16%	17%	15%	17%	16%	16%	17%	21%	20%	14%	17%	14%
Somewhat disapprove	22%	20%	16%	23%	26%	23%	19%	17%	22%	19%	22%	23%
Strongly disapprove	33%	18%	30%	38%	44%	35%	37%	18%	31%	43%	31%	28%
Not sure	17%	25%	23%	12%	7%	15%	21%	22%	15%	15%	17%	19%
Totals (Unweighted N)	100% (1,491)	100% (265)	100% (404)	100% (540)	100% (282)	100% (1,199)	100% (150)	100% (142)	100% (315)	100% (334)	100% (545)	100% (297)

	Party ID			Ideology			Gender		Family Income (3 category)				
	Total	Dem	Ind	Rep	Lib	Mod	Con	Male	Female	Under 50	50-100	100+	Prefer not to say
Strongly approve	3%	2%	1%	8%	4%	2%	5%	4%	3%	3%	2%	8%	4%
Somewhat approve	9%	7%	7%	15%	7%	7%	14%	9%	9%	10%	9%	9%	6%
Neither approve nor disapprove	16%	16%	15%	20%	9%	19%	19%	17%	16%	17%	16%	17%	15%
Somewhat disapprove	22%	20%	19%	29%	19%	19%	27%	22%	22%	22%	23%	21%	20%
Strongly disapprove	33%	43%	34%	19%	54%	25%	26%	37%	29%	30%	40%	41%	26%
Not sure	17%	12%	24%	9%	8%	28%	8%	12%	21%	19%	11%	4%	30%
Totals (Unweighted N)	100% (1,491)	100% (533)	100% (607)	100% (351)	100% (486)	100% (591)	100% (414)	100% (653)	100% (838)	100% (706)	100% (410)	100% (207)	100% (168)

**5. Direction of country – Historical**

Would you say things in this country today are...

	All Adults		
	Right Direction	Wrong Track	Not Sure
June 16-20, 2017	30%	52%	18%
June 9-13, 2017	33%	51%	16%
June 2-6, 2017	30%	55%	15%
May 27-29, 2017	30%	55%	16%
May 20-22, 2017	30%	55%	16%
May 13-15, 2017	31%	55%	14%
May 6-8, 2017	33%	52%	15%
April 29-May 1, 2017	34%	50%	16%
April 22-24, 2017	32%	51%	17%
April 15-17, 2017	32%	51%	16%
One Year Ago	26%	63%	11%

	Registered Voters		
	Right Direction	Wrong Track	Not Sure
June 16-20, 2017	30%	56%	14%
June 9-13, 2017	35%	53%	12%
June 2-6, 2017	32%	56%	12%
May 27-29, 2017	31%	57%	12%
May 20-22, 2017	30%	57%	13%
May 13-15, 2017	30%	59%	11%
May 6-8, 2017	35%	54%	11%
April 29-May 1, 2017	36%	51%	13%
April 22-24, 2017	33%	53%	14%
April 15-17, 2017	35%	53%	12%
One Year Ago	28%	63%	9%

## Direction of Country

"Would you say things in this country today are generally headed in the right direction or off on the wrong track?"

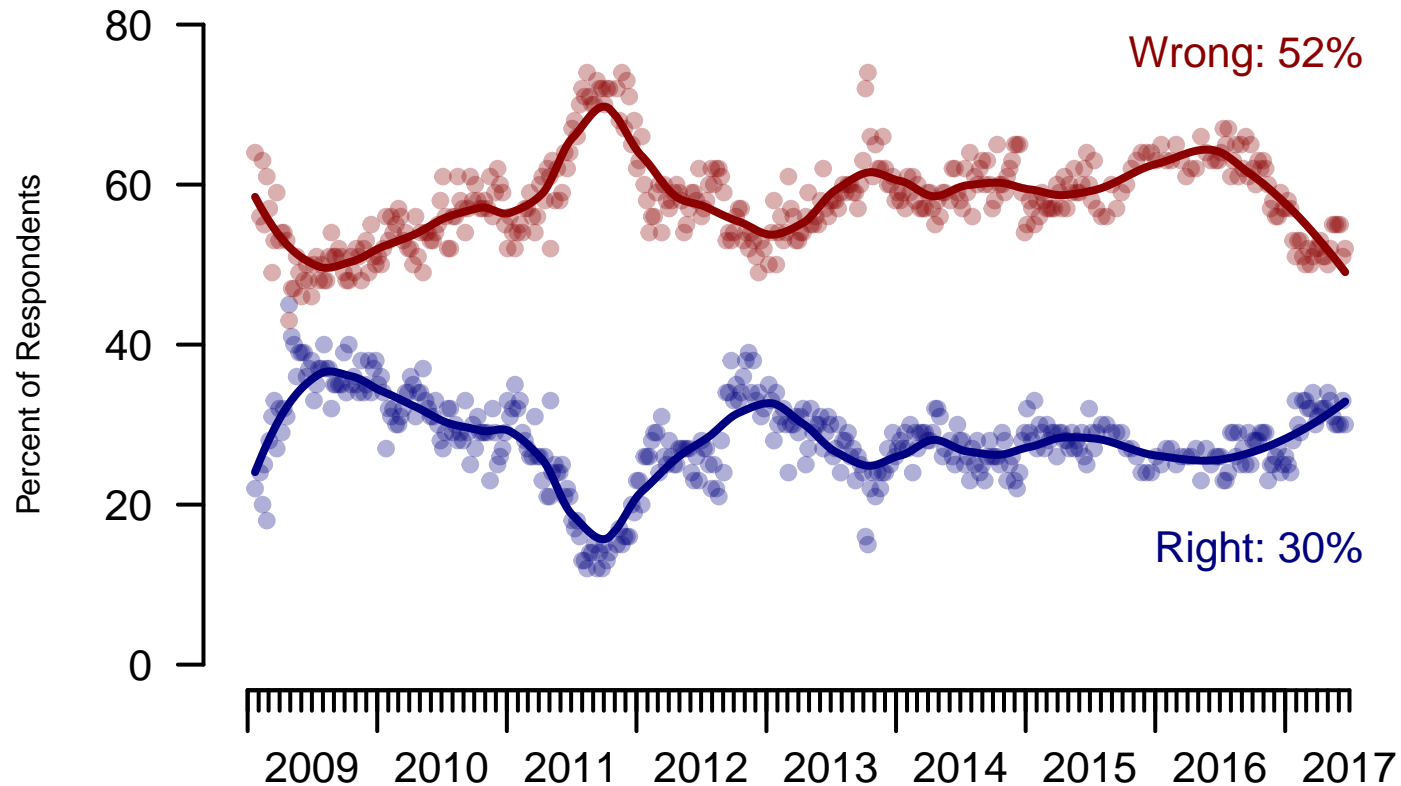


Figure 5: Direction of Country – All Adults

## Direction of Country

"Would you say things in this country today are generally headed in the right direction or off on the wrong track?"

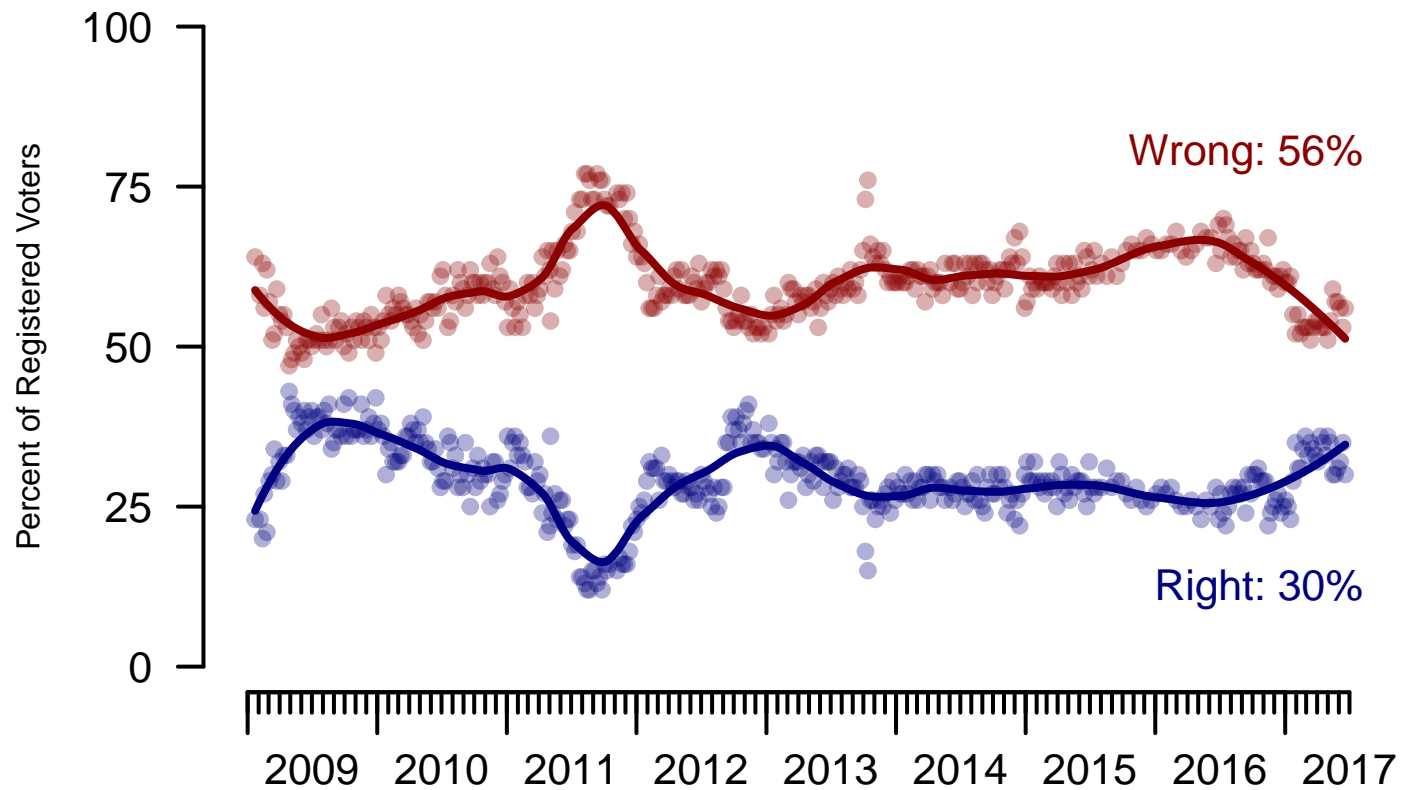


Figure 6: Direction of Country – Registered Voters

**6. Direction of Country – This Week – All Adults**

Would you say things in this country today are...

	Age (4 category)					Race			Census Region			
	Total	Under 30	30-44	45-64	65+	White	Black	Hispanic	North-east	Mid-west	South	West
Generally headed in the right direction	30%	33%	22%	33%	31%	33%	16%	23%	30%	26%	29%	35%
Off on the wrong track	52%	50%	54%	53%	51%	50%	61%	58%	55%	57%	51%	47%
Not sure	18%	16%	24%	14%	18%	17%	23%	19%	15%	17%	20%	18%
Totals (Unweighted N)	100% (1,500)	100% (267)	100% (409)	100% (541)	100% (283)	100% (1,208)	100% (150)	100% (142)	100% (316)	100% (337)	100% (548)	100% (299)

	Party ID			Ideology			Gender		Family Income (3 category)				
	Total	Dem	Ind	Rep	Lib	Mod	Con	Male	Female	Under 50	50-100	100+	Prefer not to say
Generally headed in the right direction	30%	19%	21%	58%	15%	24%	51%	34%	26%	29%	33%	43%	17%
Off on the wrong track	52%	71%	54%	26%	77%	52%	32%	50%	54%	52%	56%	47%	51%
Not sure	18%	10%	24%	15%	8%	24%	17%	16%	19%	19%	11%	10%	32%
Totals (Unweighted N)	100% (1,500)	100% (534)	100% (614)	100% (352)	100% (486)	100% (597)	100% (417)	100% (659)	100% (841)	100% (709)	100% (414)	100% (207)	100% (170)

**The Economist/YouGov Poll**  
June 18 - 20, 2017



<b>Sponsorship</b>	<i>The Economist</i>
<b>Fieldwork</b>	YouGov
<b>Interviewing Dates</b>	June 18 - 20, 2017
<b>Target population</b>	U.S. citizens, aged 18 and over.
<b>Sampling method</b>	Respondents were selected from YouGov's opt-in Internet panel using sample matching. A random sample (stratified by age, gender, race, education, and region) was selected from the 2014 American Community Study. Voter registration was imputed from the November 2014 Current Population Survey Registration and Voting Supplement.
<b>Weighting</b>	The sample was weighted based on age, gender, race, education, and 2016 Presidential vote. The weights range from 0.24 to 4.69, with a mean of one and a standard deviation of 0.7.
<b>Number of respondents</b>	1500
<b>Margin of error</b>	± 3% (adjusted for weighting)
<b>Margin of error (Registered Voters)</b>	± 3.4% (adjusted for weighting)
<b>Survey mode</b>	Web-based interviews
<b>Full results</b>	Available online at <a href="http://today.yougov.com/news/categories/economist/">http://today.yougov.com/news/categories/economist/</a> .