

Interviewing: August 13 - 15, 2017  
Sample: 1500 Adults nationwide online  
1114 registered voters nationwide online



# *The Economist/YouGov* Poll

## Weekly Tracking

For immediate release

**1. Presidential Job Approval – Historical**

Do you approve or disapprove of the way [President's name] is handling his job as President?

	All Adults						
	Total Approve	Total Disapprove	Strongly Approve	Somewhat Approve	Somewhat Disapprove	Strongly Disapprove	Not Sure
August 11-15, 2017	39%	51%	19%	20%	12%	39%	10%
August 4-8, 2017	37%	53%	18%	19%	14%	39%	11%
July 28-August 1, 2017	37%	54%	16%	21%	13%	41%	9%
July 22-24, 2017	39%	51%	20%	19%	12%	39%	10%
July 15-17, 2017	38%	54%	20%	18%	13%	41%	9%
July 8-10, 2017	37%	52%	20%	17%	14%	38%	11%
July 1-3, 2017	38%	52%	20%	18%	13%	39%	10%
June 24-26, 2017	39%	51%	21%	18%	11%	40%	10%
June 17-19, 2017	40%	49%	19%	21%	10%	39%	11%
June 10-12, 2017	39%	52%	20%	19%	13%	39%	10%
One Year Ago	53%	46%	27%	26%	12%	34%	2%

	Registered Voters						
	Total Approve	Total Disapprove	Strongly Approve	Somewhat Approve	Somewhat Disapprove	Strongly Disapprove	Not Sure
August 11-15, 2017	42%	54%	22%	20%	12%	42%	5%
August 4-8, 2017	40%	54%	21%	19%	12%	42%	7%
July 28-August 1, 2017	39%	55%	19%	20%	11%	44%	5%
July 22-24, 2017	41%	54%	23%	18%	11%	43%	5%
July 15-17, 2017	39%	56%	22%	17%	12%	44%	6%
July 8-10, 2017	41%	52%	24%	17%	11%	41%	7%
July 1-3, 2017	41%	53%	23%	18%	12%	41%	7%
June 24-26, 2017	42%	53%	25%	17%	9%	44%	4%
June 17-19, 2017	43%	51%	22%	21%	9%	42%	6%
June 10-12, 2017	42%	51%	24%	18%	9%	42%	6%
One Year Ago	49%	50%	26%	23%	12%	38%	2%

## Presidential Job Approval

"Do you approve or disapprove of the way  
Donald Trump is handling his job as President?"

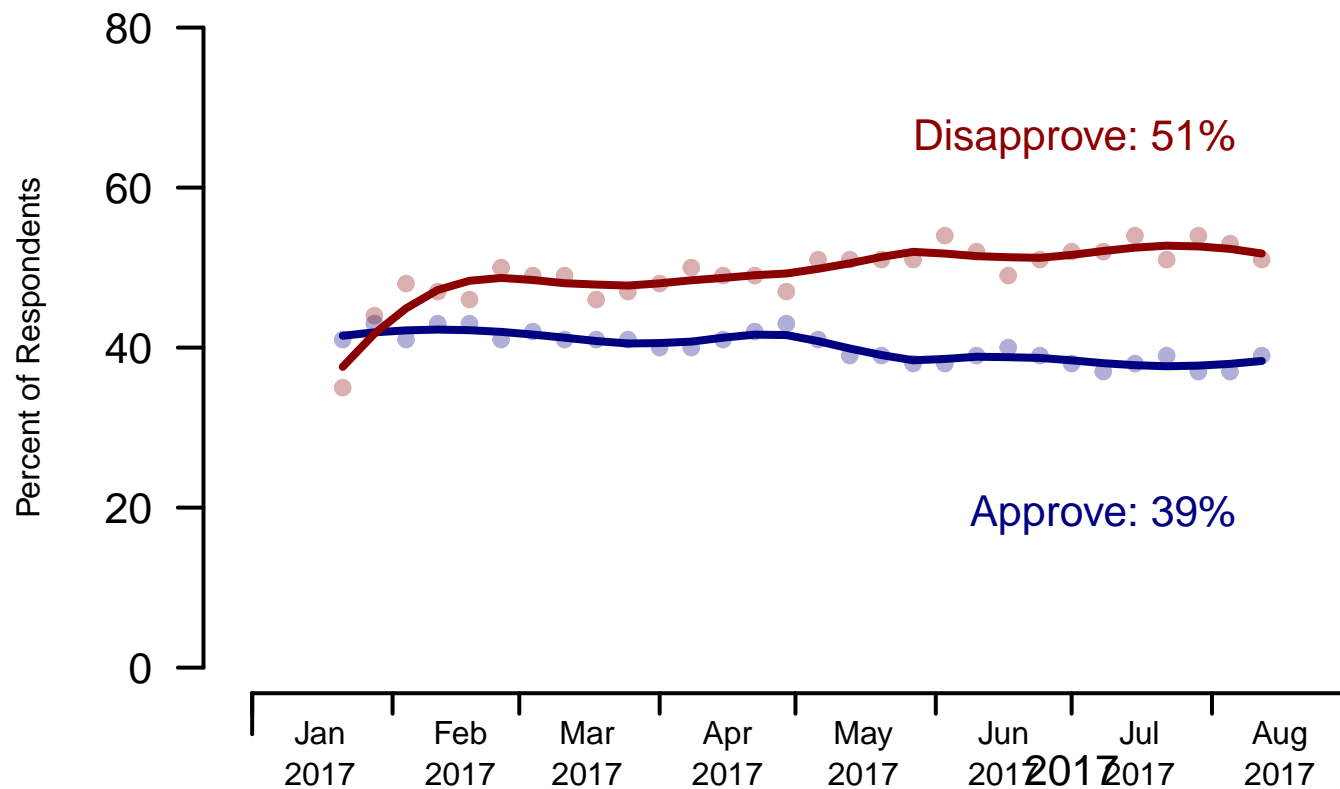


Figure 1: Trump Approval – All Adults

## Presidential Job Approval

"Do you approve or disapprove of the way  
Donald Trump is handling his job as President?"

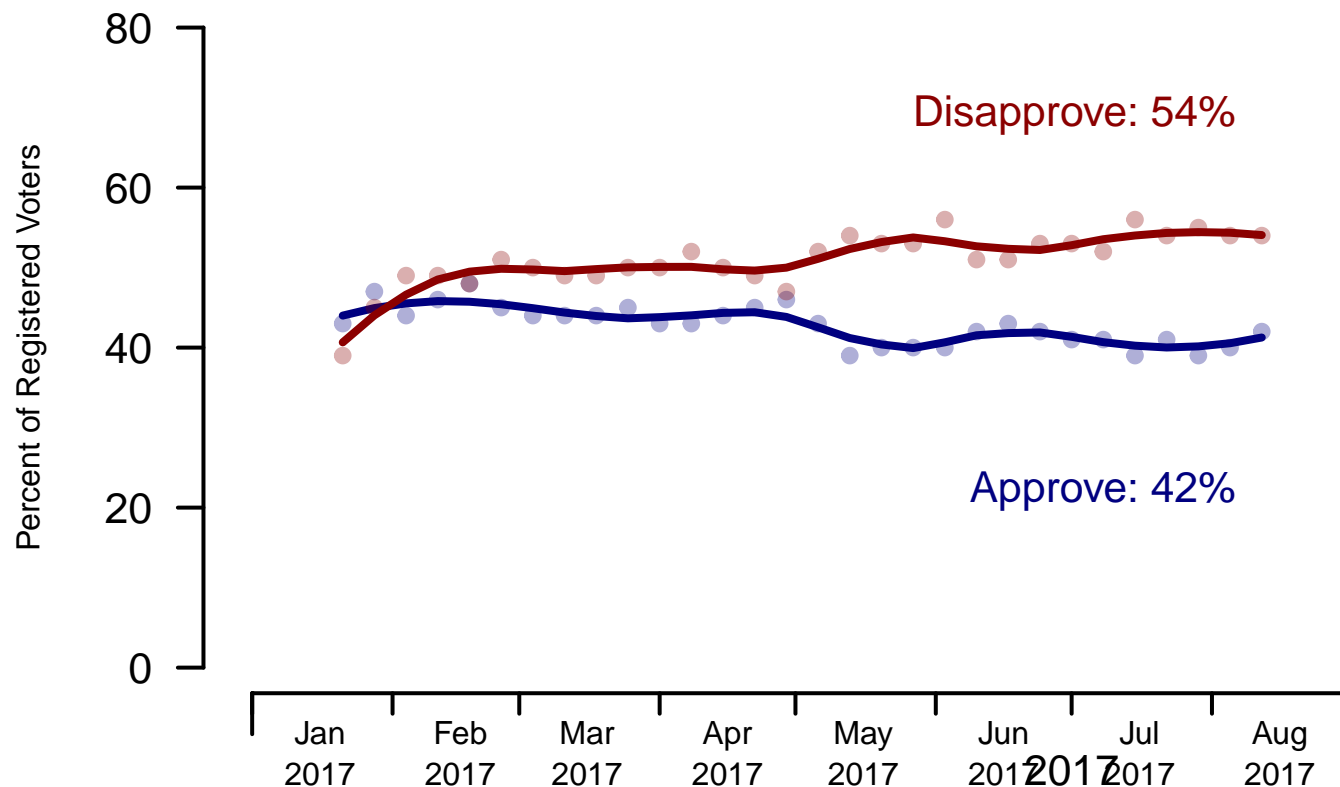


Figure 2: Trump Approval – Registered Voters

**2. President Trump Job Approval – This Week – All Adults**

Do you approve or disapprove of the way Donald Trump is handling his job as President?

	Age (4 category)					Race			Census Region			
	Total	Under 30	30-44	45-64	65+	White	Black	Hispanic	North-east	Mid-west	South	West
Strongly approve	19%	8%	14%	22%	30%	23%	4%	10%	16%	19%	19%	20%
Somewhat approve	20%	20%	17%	22%	18%	22%	10%	11%	18%	21%	19%	21%
Somewhat disapprove	12%	15%	15%	11%	7%	11%	17%	14%	12%	15%	14%	7%
Strongly disapprove	39%	37%	38%	40%	42%	36%	52%	44%	38%	39%	38%	44%
Not sure	10%	19%	15%	6%	2%	8%	17%	20%	15%	6%	11%	9%
Totals (Unweighted N)	100% (1,500)	100% (288)	100% (392)	100% (543)	100% (277)	100% (1,215)	100% (168)	100% (117)	100% (312)	100% (327)	100% (553)	100% (308)

	Party ID				Ideology			Gender		Family Income (3 category)			
	Total	Dem	Ind	Rep	Lib	Mod	Con	Male	Female	Under 50	50-100	100+	Prefer not to say
Strongly approve	19%	4%	16%	42%	4%	11%	41%	22%	16%	13%	27%	23%	20%
Somewhat approve	20%	8%	18%	37%	5%	16%	36%	24%	16%	20%	19%	22%	18%
Somewhat disapprove	12%	14%	12%	10%	10%	16%	9%	10%	14%	14%	10%	14%	7%
Strongly disapprove	39%	68%	36%	7%	77%	38%	9%	36%	42%	40%	41%	38%	36%
Not sure	10%	6%	18%	3%	4%	19%	5%	8%	12%	14%	3%	2%	19%
Totals (Unweighted N)	100% (1,500)	100% (549)	100% (598)	100% (353)	100% (495)	100% (593)	100% (412)	100% (665)	100% (835)	100% (714)	100% (407)	100% (205)	100% (174)

### 3. Approval of U.S. Congress – Historical

Overall, do you approve or disapprove of the way that the United States Congress is handling its job?

All Adults								
	Total Approve	Total Disapprove	Strongly Approve	Somewhat Approve	Neutral	Somewhat Disapprove	Strongly Disapprove	Not Sure
August 11-15, 2017	10%	62%	3%	7%	14%	22%	40%	15%
August 4-8, 2017	11%	58%	2%	9%	15%	22%	36%	16%
July 28-August 1, 2017	10%	62%	3%	7%	13%	23%	39%	16%
July 22-24, 2017	12%	58%	4%	8%	18%	23%	35%	12%
July 15-17, 2017	12%	57%	3%	9%	17%	21%	36%	15%
July 8-10, 2017	12%	56%	4%	8%	16%	20%	36%	14%
July 1-3, 2017	12%	56%	3%	9%	16%	22%	34%	16%
June 24-26, 2017	12%	56%	3%	9%	18%	20%	36%	14%
June 17-19, 2017	12%	55%	3%	9%	16%	22%	33%	17%
June 10-12, 2017	12%	55%	4%	8%	18%	20%	35%	14%
One Year Ago	9%	65%	2%	7%	17%	25%	40%	9%

Registered Voters								
	Total Approve	Total Disapprove	Strongly Approve	Somewhat Approve	Neutral	Somewhat Disapprove	Strongly Disapprove	Not Sure
August 11-15, 2017	8%	68%	3%	5%	13%	24%	44%	10%
August 4-8, 2017	11%	67%	3%	8%	13%	24%	43%	10%
July 28-August 1, 2017	9%	68%	3%	6%	12%	24%	44%	11%
July 22-24, 2017	11%	67%	3%	8%	15%	26%	41%	7%
July 15-17, 2017	10%	64%	3%	7%	15%	23%	41%	11%
July 8-10, 2017	13%	65%	4%	9%	14%	22%	43%	9%
July 1-3, 2017	14%	61%	4%	10%	14%	23%	38%	11%
June 24-26, 2017	13%	63%	3%	10%	16%	22%	41%	8%
June 17-19, 2017	12%	61%	3%	9%	17%	23%	38%	11%
June 10-12, 2017	11%	61%	3%	8%	18%	21%	40%	9%
One Year Ago	10%	70%	2%	8%	13%	24%	46%	8%

## Congress Approval

"Do you approve of the way the  
U.S. Congress is handling its job?"

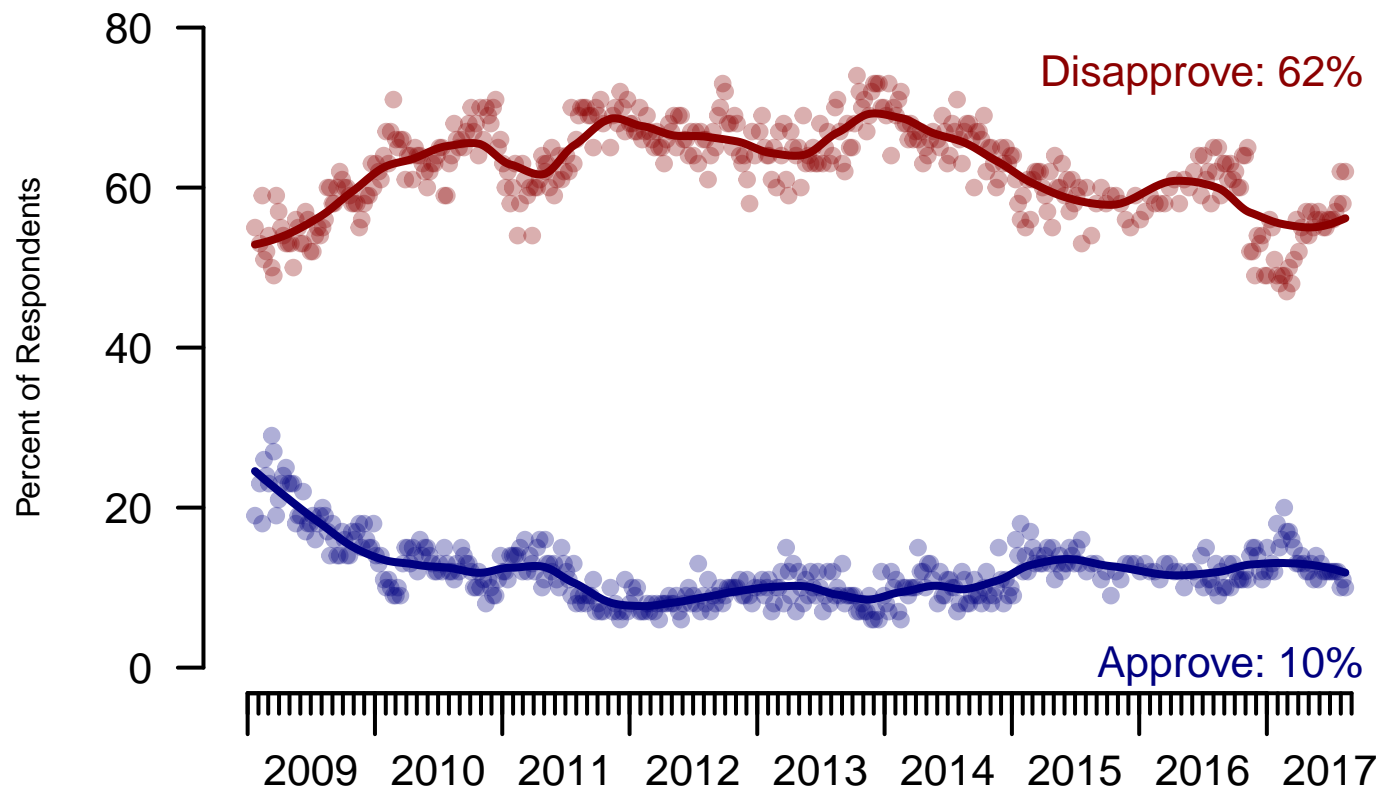


Figure 3: Congress Approval – All Adults

## Congress Approval

"Do you approve of the way the  
U.S. Congress is handling its job?"

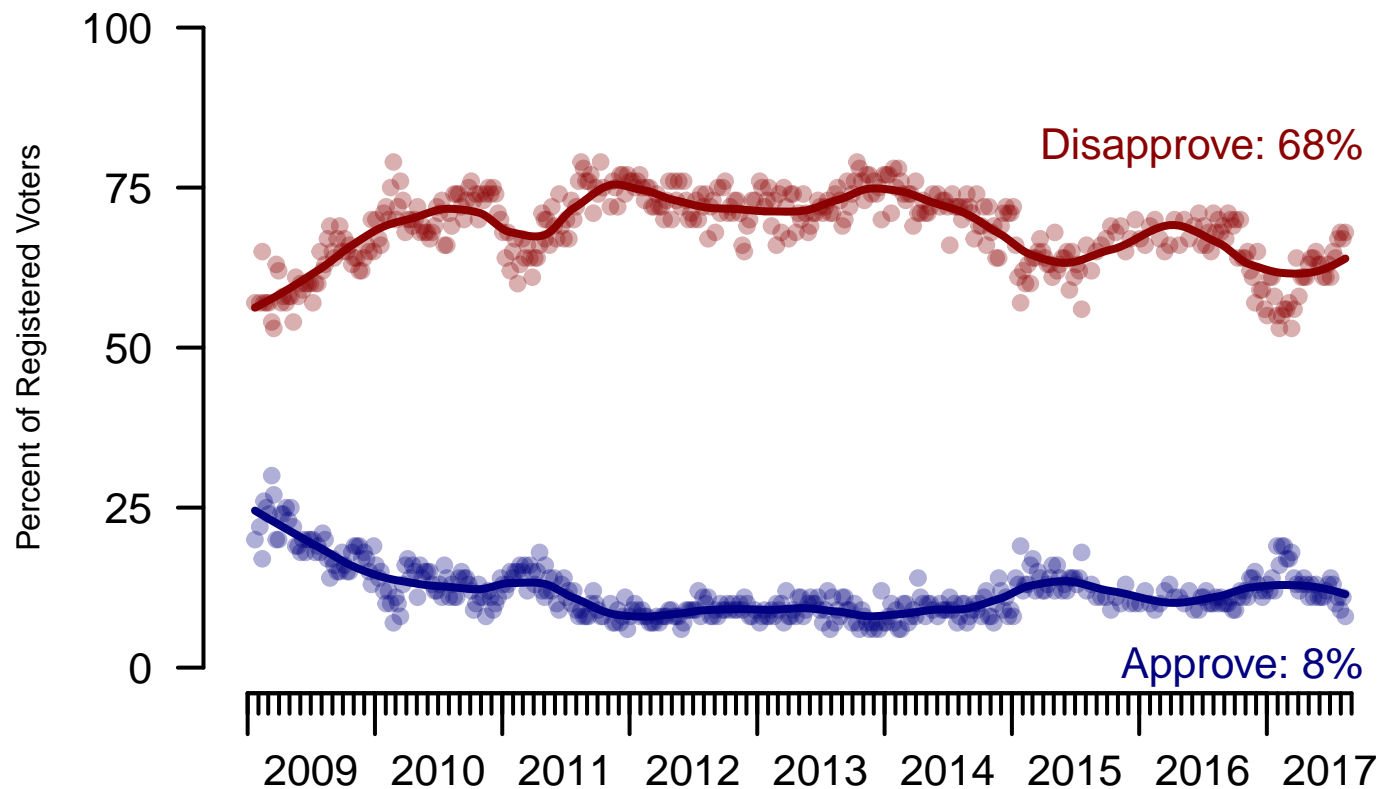


Figure 4: Congress Approval – Registered Voters



**4. Approval of U.S. Congress – This Week – All Adults**

Overall, do you approve or disapprove of the way that the United States Congress is handling its job?

	Age (4 category)					Race			Census Region			
	Total	Under 30	30-44	45-64	65+	White	Black	Hispanic	North-east	Mid-west	South	West
Strongly approve	3%	3%	6%	2%	1%	3%	3%	2%	4%	1%	3%	4%
Somewhat approve	7%	8%	9%	6%	4%	7%	2%	10%	7%	6%	7%	7%
Neither approve nor disapprove	14%	18%	14%	13%	10%	12%	18%	18%	17%	12%	13%	13%
Somewhat disapprove	22%	18%	22%	25%	22%	24%	17%	12%	16%	27%	24%	19%
Strongly disapprove	40%	26%	31%	43%	58%	41%	38%	33%	36%	40%	38%	45%
Not sure	15%	27%	19%	12%	6%	13%	22%	25%	20%	15%	15%	12%
Totals (Unweighted N)	100% (1,490)	100% (284)	100% (388)	100% (543)	100% (275)	100% (1,208)	100% (167)	100% (115)	100% (311)	100% (324)	100% (549)	100% (306)

	Party ID				Ideology			Gender		Family Income (3 category)			
	Total	Dem	Ind	Rep	Lib	Mod	Con	Male	Female	Under 50	50-100	100+	Prefer not to say
Strongly approve	3%	2%	1%	7%	2%	1%	6%	4%	2%	2%	3%	9%	2%
Somewhat approve	7%	5%	5%	12%	5%	7%	8%	7%	6%	6%	10%	5%	7%
Neither approve nor disapprove	14%	16%	12%	14%	9%	16%	14%	12%	16%	15%	14%	10%	10%
Somewhat disapprove	22%	18%	21%	27%	21%	18%	27%	22%	22%	22%	23%	27%	15%
Strongly disapprove	40%	47%	38%	32%	55%	32%	36%	46%	33%	38%	43%	43%	35%
Not sure	15%	11%	24%	8%	8%	25%	9%	9%	21%	17%	8%	6%	32%
Totals (Unweighted N)	100% (1,490)	100% (542)	100% (596)	100% (352)	100% (490)	100% (589)	100% (411)	100% (660)	100% (830)	100% (708)	100% (405)	100% (205)	100% (172)

**5. Direction of country – Historical**

Would you say things in this country today are...

	All Adults		
	Right Direction	Wrong Track	Not Sure
August 11-15, 2017	27%	59%	14%
August 4-8, 2017	30%	54%	16%
July 28-August 1, 2017	29%	54%	17%
July 22-24, 2017	31%	55%	14%
July 15-17, 2017	31%	56%	13%
July 8-10, 2017	32%	54%	14%
July 1-3, 2017	30%	54%	16%
June 24-26, 2017	31%	54%	15%
June 17-19, 2017	30%	52%	18%
June 10-12, 2017	33%	51%	16%
One Year Ago	26%	65%	9%

	Registered Voters		
	Right Direction	Wrong Track	Not Sure
August 11-15, 2017	28%	61%	11%
August 4-8, 2017	31%	57%	12%
July 28-August 1, 2017	30%	57%	13%
July 22-24, 2017	32%	57%	11%
July 15-17, 2017	31%	58%	11%
July 8-10, 2017	34%	55%	11%
July 1-3, 2017	33%	55%	12%
June 24-26, 2017	32%	57%	11%
June 17-19, 2017	30%	56%	14%
June 10-12, 2017	35%	53%	12%
One Year Ago	27%	64%	9%

## Direction of Country

"Would you say things in this country today are generally headed in the right direction or off on the wrong track?"

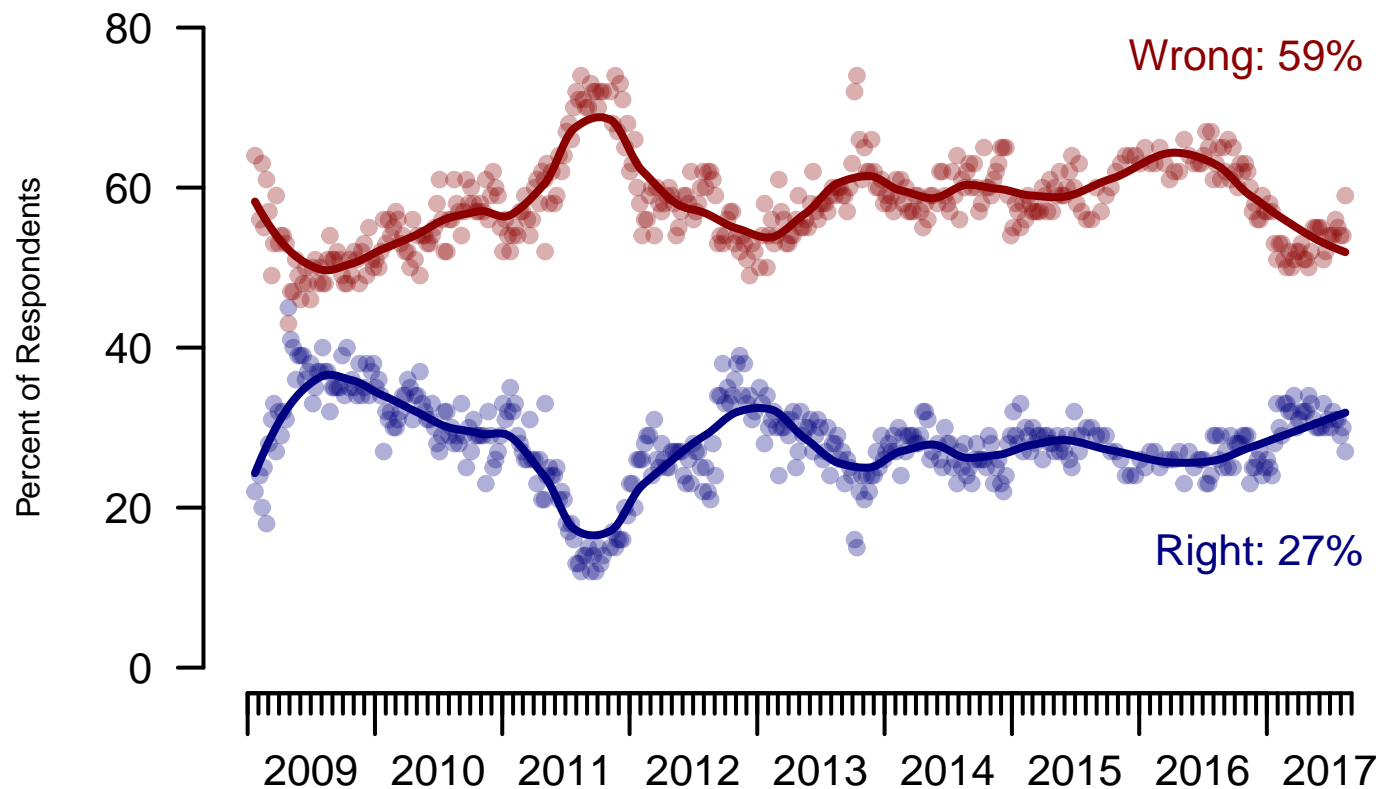


Figure 5: Direction of Country – All Adults

## Direction of Country

"Would you say things in this country today are generally headed in the right direction or off on the wrong track?"

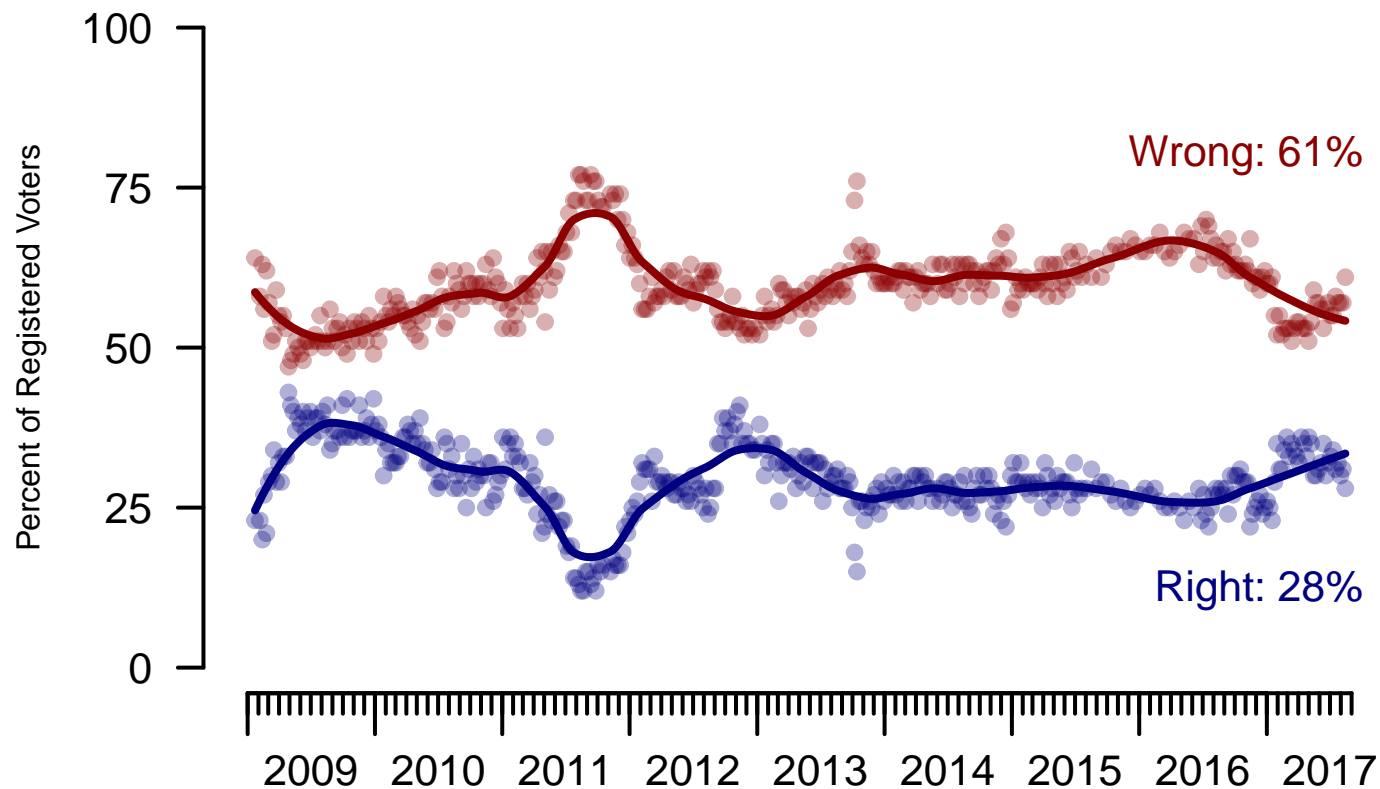


Figure 6: Direction of Country – Registered Voters

**6. Direction of Country – This Week – All Adults**

Would you say things in this country today are...

	Age (4 category)					Race			Census Region			
	Total	Under 30	30-44	45-64	65+	White	Black	Hispanic	North-east	Mid-west	South	West
Generally headed in the right direction	27%	22%	26%	29%	32%	30%	17%	20%	25%	28%	27%	31%
Off on the wrong track	59%	60%	55%	61%	59%	56%	70%	63%	60%	59%	60%	54%
Not sure	14%	18%	19%	10%	9%	13%	12%	17%	15%	13%	13%	14%
Totals (Unweighted N)	100% (1,500)	100% (288)	100% (392)	100% (543)	100% (277)	100% (1,215)	100% (168)	100% (117)	100% (312)	100% (327)	100% (553)	100% (308)

	Party ID				Ideology			Gender		Family Income (3 category)			
	Total	Dem	Ind	Rep	Lib	Mod	Con	Male	Female	Under 50	50-100	100+	Prefer not to say
Generally headed in the right direction	27%	14%	23%	53%	12%	20%	49%	34%	21%	22%	34%	30%	31%
Off on the wrong track	59%	79%	56%	37%	80%	62%	37%	55%	62%	62%	57%	59%	51%
Not sure	14%	7%	21%	10%	8%	18%	14%	11%	17%	15%	9%	11%	19%
Totals (Unweighted N)	100% (1,500)	100% (549)	100% (598)	100% (353)	100% (495)	100% (593)	100% (412)	100% (665)	100% (835)	100% (714)	100% (407)	100% (205)	100% (174)

<b>Sponsorship</b>	<i>The Economist</i>
<b>Fieldwork</b>	YouGov
<b>Interviewing Dates</b>	August 13 - 15, 2017
<b>Target population</b>	U.S. citizens, aged 18 and over.
<b>Sampling method</b>	Respondents were selected from YouGov's opt-in Internet panel using sample matching. A random sample (stratified by age, gender, race, education, and region) was selected from the 2014 American Community Study. Voter registration was imputed from the November 2014 Current Population Survey Registration and Voting Supplement.
<b>Weighting</b>	The sample was weighted based on age, gender, race, education, and 2016 Presidential vote. The weights range from 0.16 to 6.44, with a mean of one and a standard deviation of 0.7.
<b>Number of respondents</b>	1500
<b>Margin of error</b>	± 3.1% (adjusted for weighting)
<b>Margin of error (Registered Voters)</b>	± 3.5% (adjusted for weighting)
<b>Survey mode</b>	Web-based interviews
<b>Full results</b>	Available online at <a href="http://today.yougov.com/news/categories/economist/">http://today.yougov.com/news/categories/economist/</a> .