

Interviewing: December 4 - 9, 2015  
Sample: 2000 Adults nationwide online  
1202 registered voters nationwide online



# *The Economist/YouGov* Poll

## Weekly Tracking

For immediate release

**1. Approval of Obama as President – Historical**

Do you approve or disapprove of the way Barack Obama is handling his job as President?

	All Adults						
	Total Approve	Total Disapprove	Strongly Approve	Somewhat Approve	Somewhat Disapprove	Strongly Disapprove	Not Sure
December 4-8, 2015	42%	53%	17%	25%	16%	37%	5%
November 20-24, 2015	45%	50%	19%	26%	13%	37%	5%
November 6-10, 2015	45%	48%	19%	26%	12%	36%	7%
October 24-26, 2015	43%	51%	19%	24%	15%	36%	7%
October 10-12, 2015	44%	48%	17%	27%	13%	35%	7%
September 26-28, 2015	47%	47%	21%	26%	12%	35%	6%
September 12-14, 2015	47%	47%	19%	28%	13%	34%	6%
August 29-31, 2015	46%	47%	21%	25%	12%	35%	7%
August 15-17, 2015	44%	49%	19%	25%	14%	35%	7%
August 1-3, 2015	46%	48%	19%	27%	13%	35%	5%
One Year Ago	40%	53%	15%	25%	16%	37%	7%

	Registered Voters						
	Total Approve	Total Disapprove	Strongly Approve	Somewhat Approve	Somewhat Disapprove	Strongly Disapprove	Not Sure
December 4-8, 2015	42%	56%	19%	23%	13%	43%	3%
November 20-24, 2015	44%	53%	21%	23%	10%	43%	2%
November 6-10, 2015	45%	53%	22%	23%	10%	43%	3%
October 24-26, 2015	42%	56%	20%	22%	13%	43%	2%
October 10-12, 2015	44%	53%	19%	25%	12%	41%	3%
September 26-28, 2015	45%	52%	22%	23%	10%	42%	3%
September 12-14, 2015	47%	50%	21%	26%	11%	39%	3%
August 29-31, 2015	44%	53%	22%	22%	12%	41%	3%
August 15-17, 2015	43%	53%	21%	22%	13%	40%	4%
August 1-3, 2015	44%	54%	21%	23%	12%	42%	2%
One Year Ago	42%	55%	20%	22%	13%	42%	2%

## Obama Approval

"Do you approve or disapprove of the way Barack Obama is handling his job as President?"

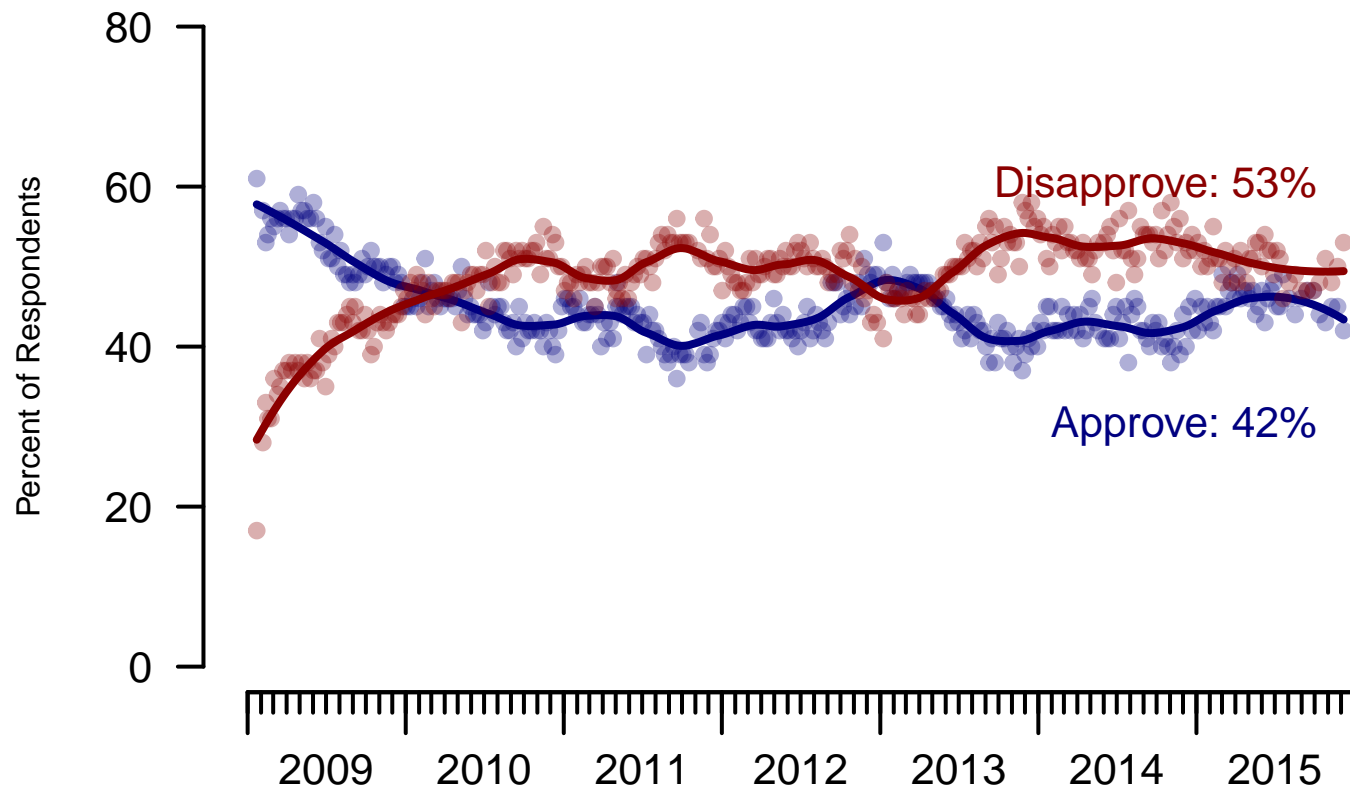


Figure 1: Obama Approval – All Adults

## Obama Approval

"Do you approve or disapprove of the way Barack Obama is handling his job as President?"

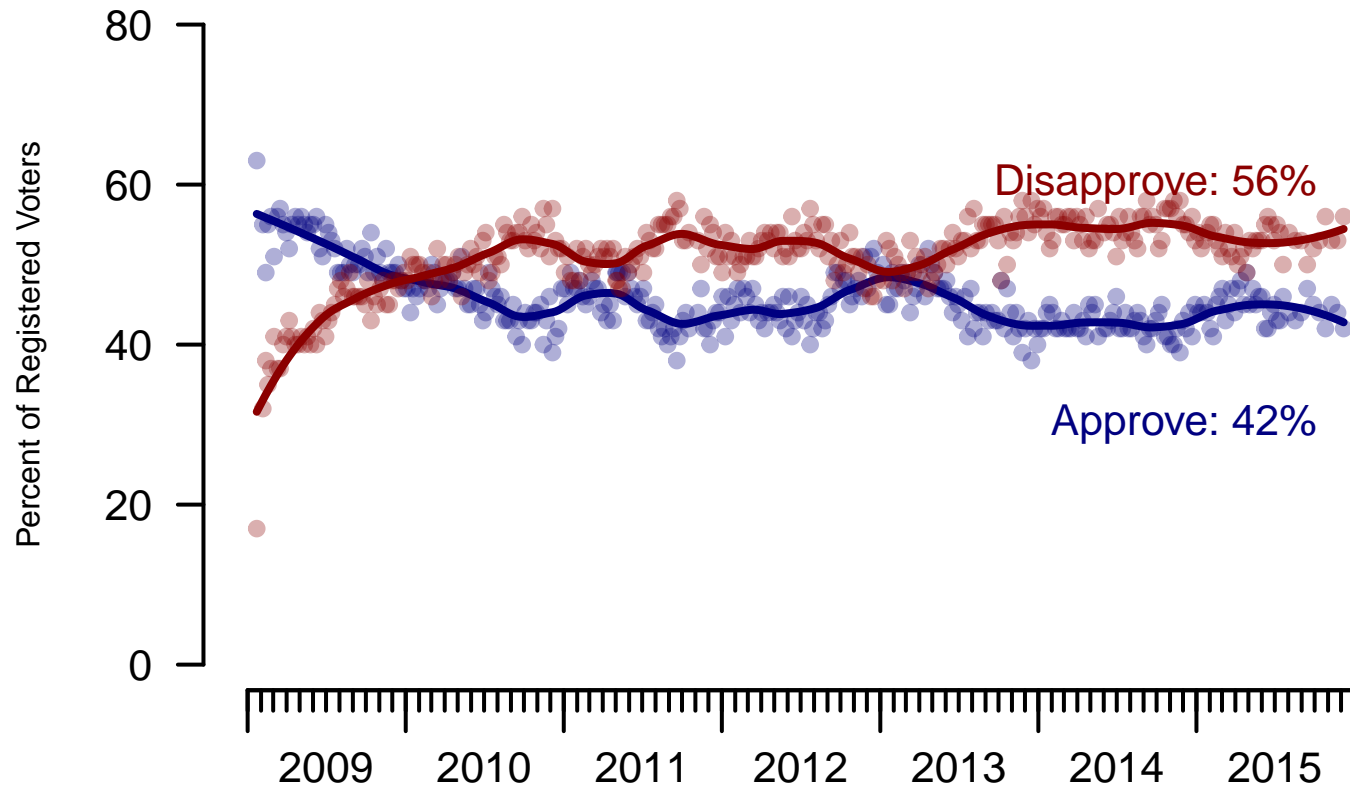


Figure 2: Obama Approval – Registered Voters

**2. Approval of Obama as President – This Week – All Adults**

Do you approve or disapprove of the way Barack Obama is handling his job as President?

	Age					Race			Region			
	Total	18-29	30-44	45-64	65+	White	Black	Hispanic	North-east	Mid-west	South	West
Strongly Approve	17%	18%	14%	19%	17%	13%	40%	20%	12%	17%	19%	21%
Somewhat Approve	25%	28%	26%	22%	24%	22%	32%	34%	21%	28%	23%	29%
Somewhat Disapprove	16%	22%	16%	15%	7%	15%	10%	24%	16%	16%	14%	17%
Strongly Disapprove	37%	23%	36%	41%	49%	45%	9%	15%	41%	35%	40%	30%
Not Sure	5%	8%	7%	3%	3%	4%	9%	7%	10%	3%	4%	5%
Totals (Unweighted N)	100% (2,000)	100% (393)	100% (528)	100% (783)	100% (296)	100% (1,516)	100% (243)	100% (241)	100% (413)	100% (445)	100% (745)	100% (397)

	3 Point Party ID			3 Point Ideology			Gender		Family Income			Prefer not to say	
	Total	Dem	Ind	Rep	Lib	Mod	Con	Male	Female	Under 50	50-100		100+
Strongly Approve	17%	37%	11%	3%	38%	14%	10%	17%	18%	18%	14%	19%	19%
Somewhat Approve	25%	39%	25%	8%	40%	32%	7%	27%	23%	26%	23%	27%	23%
Somewhat Disapprove	16%	15%	17%	13%	14%	19%	12%	15%	16%	16%	16%	12%	16%
Strongly Disapprove	37%	6%	37%	73%	7%	27%	67%	37%	37%	33%	44%	42%	36%
Not Sure	5%	2%	9%	2%	1%	8%	4%	4%	6%	6%	4%	0%	6%
Totals (Unweighted N)	100% (2,000)	100% (742)	100% (762)	100% (496)	100% (551)	100% (881)	100% (568)	100% (877)	100% (1,123)	100% (1,013)	100% (508)	100% (220)	100% (259)

**3. Approval of U.S. Congress – Historical**

Overall, do you approve or disapprove of the way that the United States Congress is handling its job?

	All Adults							
	Total Approve	Total Disapprove	Strongly Approve	Somewhat Approve	Neutral	Somewhat Disapprove	Strongly Disapprove	Not Sure
December 4-8, 2015	13%	55%	3%	10%	20%	22%	33%	12%
November 20-24, 2015	13%	56%	3%	10%	20%	24%	32%	11%
November 6-10, 2015	11%	58%	3%	8%	17%	22%	36%	14%
October 24-26, 2015	12%	59%	3%	9%	16%	22%	37%	13%
October 10-12, 2015	9%	59%	2%	7%	18%	22%	37%	14%
September 26-28, 2015	12%	58%	3%	9%	17%	24%	34%	13%
September 12-14, 2015	11%	60%	3%	8%	18%	23%	37%	12%
August 29-31, 2015	13%	58%	3%	10%	17%	22%	36%	12%
August 15-17, 2015	13%	54%	3%	10%	19%	21%	33%	14%
August 1-3, 2015	12%	60%	3%	9%	18%	25%	35%	11%
One Year Ago	8%	63%	2%	6%	20%	23%	40%	9%

	Registered Voters							
	Total Approve	Total Disapprove	Strongly Approve	Somewhat Approve	Neutral	Somewhat Disapprove	Strongly Disapprove	Not Sure
December 4-8, 2015	10%	67%	2%	8%	18%	26%	41%	6%
November 20-24, 2015	13%	65%	2%	11%	17%	27%	38%	5%
November 6-10, 2015	10%	69%	3%	7%	15%	25%	44%	6%
October 24-26, 2015	11%	68%	3%	8%	16%	24%	44%	5%
October 10-12, 2015	9%	69%	2%	7%	15%	23%	46%	7%
September 26-28, 2015	11%	67%	3%	8%	16%	26%	41%	7%
September 12-14, 2015	11%	66%	3%	8%	16%	24%	42%	7%
August 29-31, 2015	11%	65%	3%	8%	17%	24%	41%	8%
August 15-17, 2015	13%	62%	3%	10%	18%	24%	38%	7%
August 1-3, 2015	12%	66%	3%	9%	16%	26%	40%	6%
One Year Ago	9%	71%	2%	7%	15%	23%	48%	5%

### Congress Approval

"Do you approve of the way the  
U.S. Congress is handling its job?"

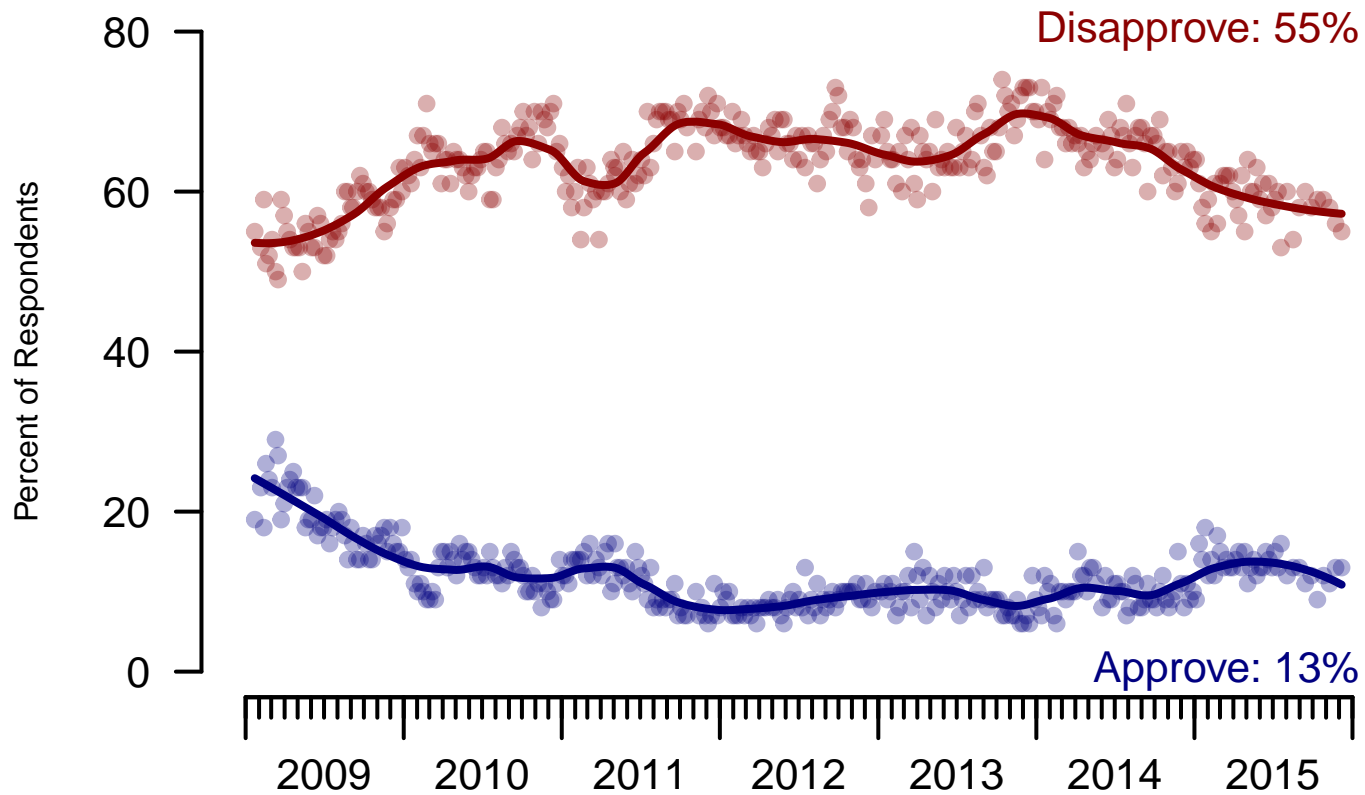


Figure 3: Congress Approval – All Adults

## Congress Approval

"Do you approve of the way the  
U.S. Congress is handling its job?"

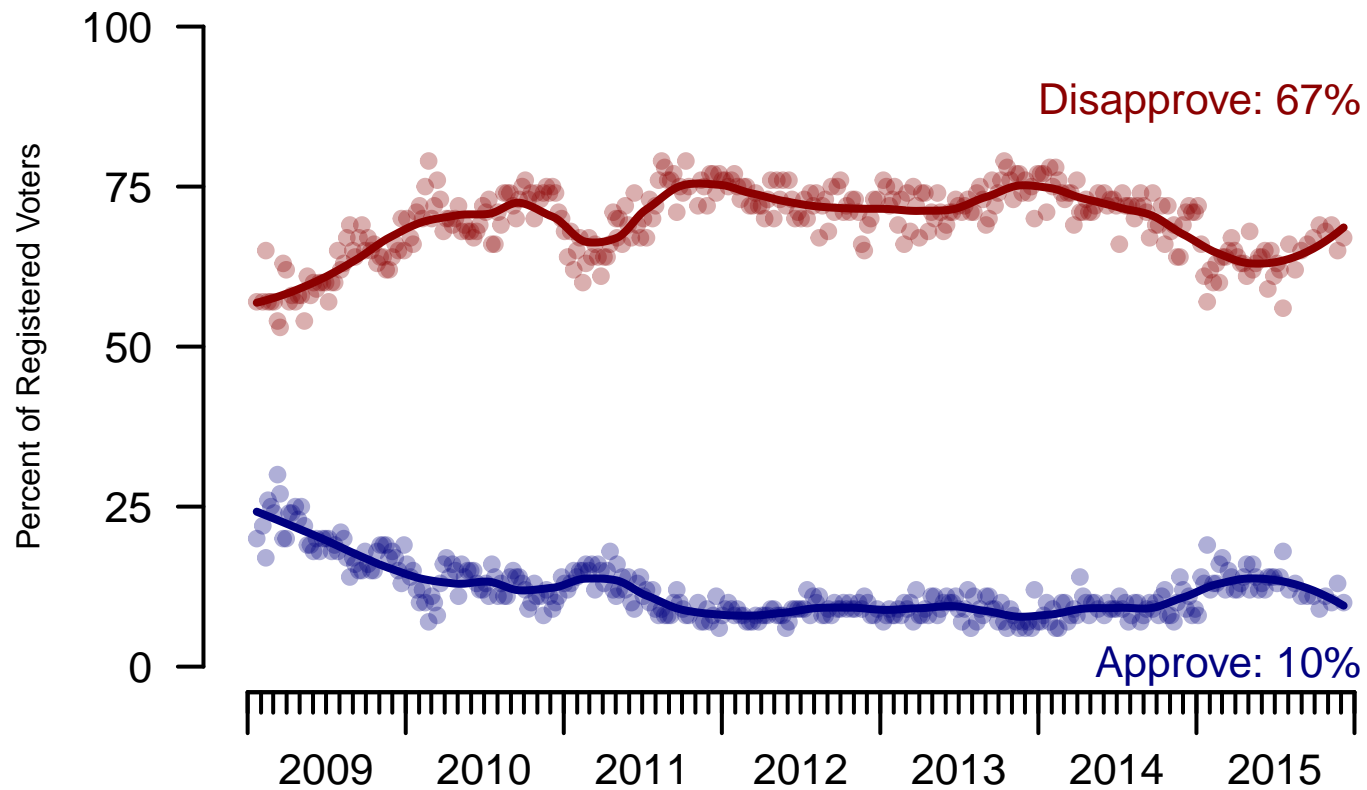


Figure 4: Congress Approval – Registered Voters



**4. Approval of U.S. Congress – This Week – All Adults**

Overall, do you approve or disapprove of the way that the United States Congress is handling its job?

	Age					Race			Region			
	Total	18-29	30-44	45-64	65+	White	Black	Hispanic	North-east	Mid-west	South	West
Strongly approve	3%	5%	4%	2%	0%	1%	11%	5%	2%	2%	3%	4%
Somewhat approve	10%	12%	8%	10%	8%	9%	13%	15%	8%	12%	10%	9%
Neither approve nor disapprove	20%	17%	24%	20%	18%	17%	24%	34%	23%	17%	19%	23%
Somewhat disapprove	22%	21%	21%	23%	22%	24%	19%	14%	17%	25%	24%	19%
Strongly disapprove	33%	22%	30%	37%	44%	38%	17%	18%	31%	33%	33%	35%
Not sure	12%	23%	11%	9%	7%	11%	15%	14%	18%	10%	11%	11%
Totals (Unweighted N)	100% (1,965)	100% (386)	100% (513)	100% (773)	100% (293)	100% (1,502)	100% (231)	100% (232)	100% (408)	100% (440)	100% (729)	100% (388)

	3 Point Party ID			3 Point Ideology			Gender		Family Income			Prefer not to say	
	Total	Dem	Ind	Rep	Lib	Mod	Con	Male	Female	Under 50	50-100		100+
Strongly approve	3%	5%	1%	4%	3%	1%	5%	3%	2%	3%	2%	1%	7%
Somewhat approve	10%	8%	8%	14%	6%	10%	11%	10%	10%	12%	8%	13%	5%
Neither approve nor disapprove	20%	19%	19%	23%	13%	20%	24%	22%	18%	20%	23%	16%	19%
Somewhat disapprove	22%	18%	18%	32%	16%	21%	26%	21%	23%	20%	25%	22%	24%
Strongly disapprove	33%	38%	36%	23%	54%	30%	26%	36%	31%	31%	34%	43%	34%
Not sure	12%	12%	18%	4%	8%	18%	8%	8%	16%	15%	9%	5%	12%
Totals (Unweighted N)	100% (1,965)	100% (725)	100% (749)	100% (491)	100% (542)	100% (860)	100% (563)	100% (866)	100% (1,099)	100% (992)	100% (502)	100% (220)	100% (251)

**5. Direction of country – Historical**

Would you say things in this country today are...

	All Adults		
	Right Direction	Wrong Track	Not Sure
December 4-8, 2015	24%	64%	12%
November 20-24, 2015	24%	64%	12%
November 6-10, 2015	26%	63%	11%
October 24-26, 2015	27%	62%	11%
October 10-12, 2015	27%	60%	13%
September 26-28, 2015	29%	59%	12%
September 12-14, 2015	29%	57%	14%
August 29-31, 2015	29%	60%	11%
August 15-17, 2015	30%	56%	14%
August 1-3, 2015	30%	56%	14%
One Year Ago	22%	65%	13%

	Registered Voters		
	Right Direction	Wrong Track	Not Sure
December 4-8, 2015	25%	67%	8%
November 20-24, 2015	26%	65%	9%
November 6-10, 2015	28%	65%	7%
October 24-26, 2015	26%	66%	8%
October 10-12, 2015	27%	65%	9%
September 26-28, 2015	29%	63%	8%
September 12-14, 2015	29%	61%	10%
August 29-31, 2015	28%	64%	7%
August 15-17, 2015	31%	61%	9%
August 1-3, 2015	28%	63%	9%
One Year Ago	26%	63%	11%

## Direction of Country

"Would you say things in this country today are generally headed in the right direction or off on the wrong track?"

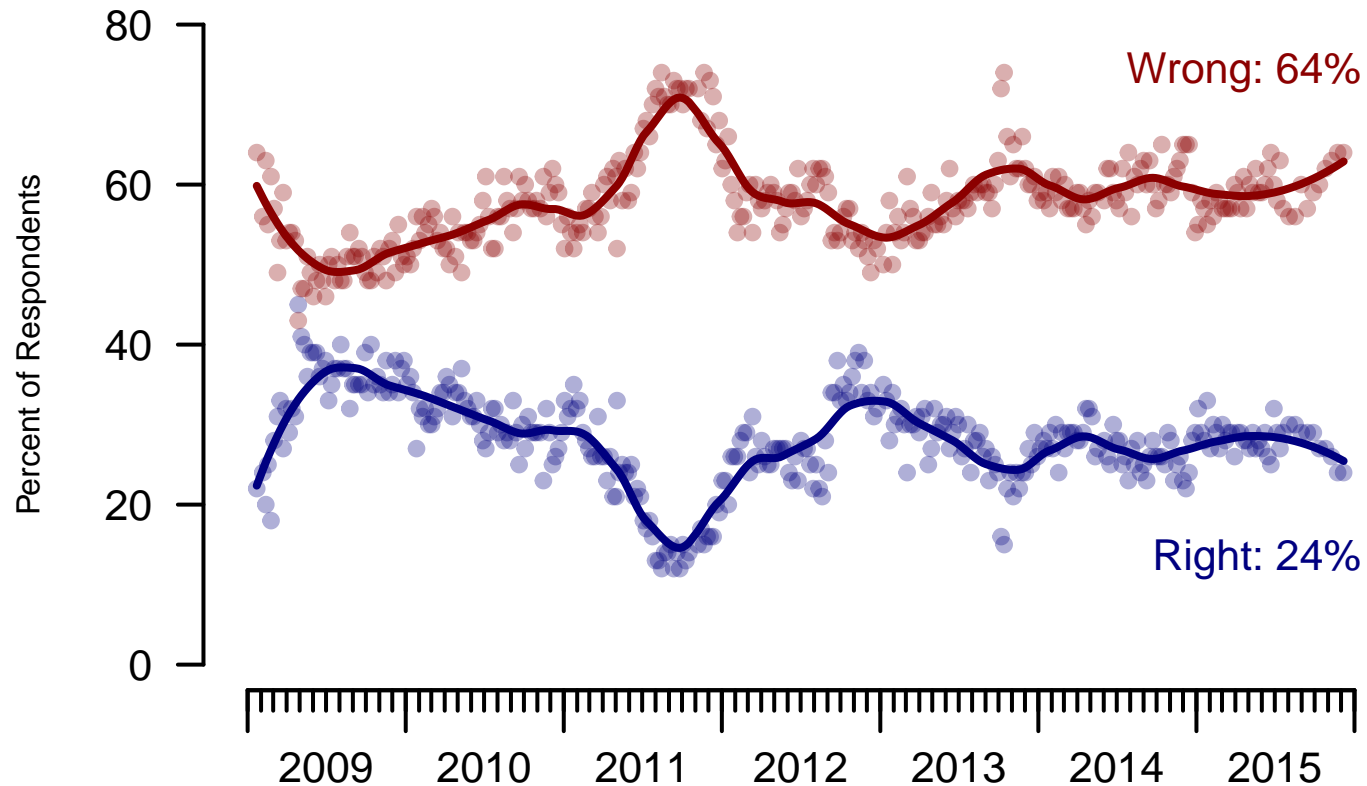


Figure 5: Direction of Country – All Adults

## Direction of Country

"Would you say things in this country today are generally headed in the right direction or off on the wrong track?"

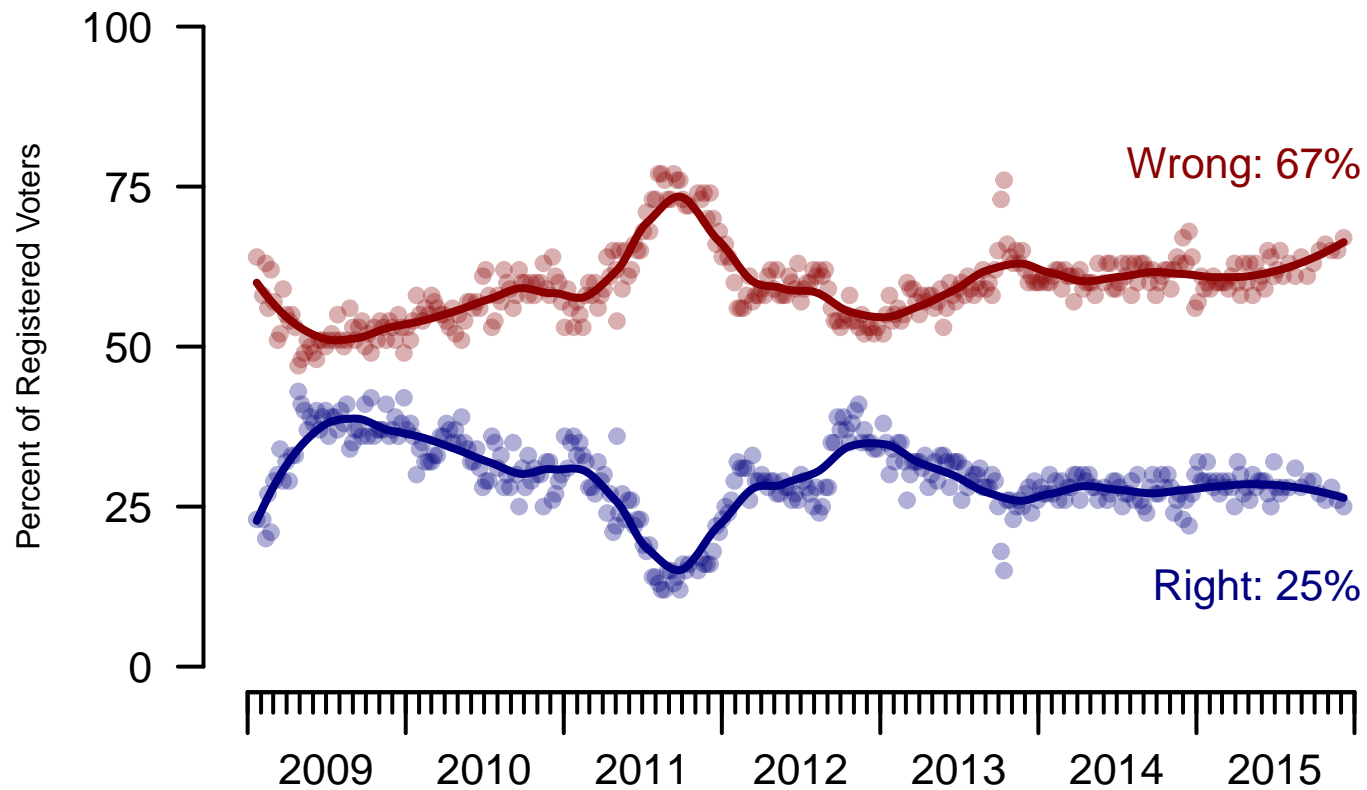


Figure 6: Direction of Country – Registered Voters

**6. Direction of Country – This Week – All Adults**

Would you say things in this country today are...

	Age					Race			Region			
	Total	18-29	30-44	45-64	65+	White	Black	Hispanic	North-east	Mid-west	South	West
Generally headed in the right direction	24%	24%	26%	24%	20%	20%	42%	31%	18%	22%	26%	27%
Off on the wrong track	64%	60%	60%	66%	69%	70%	40%	50%	68%	65%	65%	57%
Not sure	12%	16%	14%	10%	12%	10%	18%	19%	14%	12%	9%	17%
Totals (Unweighted N)	100% (2,000)	100% (393)	100% (528)	100% (783)	100% (296)	100% (1,516)	100% (243)	100% (241)	100% (413)	100% (445)	100% (745)	100% (397)

	3 Point Party ID			3 Point Ideology			Gender		Family Income			Prefer not to say	
	Total	Dem	Ind	Rep	Lib	Mod	Con	Male	Female	Under 50	50-100		100+
Generally headed in the right direction	24%	44%	18%	10%	43%	22%	15%	29%	19%	22%	25%	35%	20%
Off on the wrong track	64%	41%	67%	85%	44%	61%	79%	60%	68%	64%	67%	55%	63%
Not sure	12%	15%	15%	5%	13%	17%	6%	11%	13%	14%	8%	10%	17%
Totals (Unweighted N)	100% (2,000)	100% (742)	100% (762)	100% (496)	100% (551)	100% (881)	100% (568)	100% (877)	100% (1,123)	100% (1,013)	100% (508)	100% (220)	100% (259)

**The Economist/YouGov Poll**  
December 4 - 9, 2015



<b>Sponsorship</b>	<i>The Economist</i>
<b>Fieldwork</b>	YouGov
<b>Interviewing Dates</b>	December 4 - 9, 2015
<b>Target population</b>	U.S. citizens, aged 18 and over.
<b>Sampling method</b>	Respondents were selected from YouGov's opt-in Internet panel using sample matching. A random sample (stratified by age, gender, race, education, and region) was selected from the 2010 American Community Study. Voter registration was imputed from the November 2010 Current Population Survey Registration and Voting Supplement. Religion, political interest, minor party identification, and non-placement on an ideology scale, were imputed from the 2008 Pew Religion in American Life Survey.
<b>Weighting</b>	The sample was weighted using propensity scores based on age, gender, race, education, news interest, voter registration, and non-placement on an ideology scale. The weights range from 0.12 to 6.08, with a mean of one and a standard deviation of 0.9.
<b>Number of respondents</b>	2000
<b>Margin of error</b>	± 3% (adjusted for weighting)
<b>Margin of error (Registered Voters)</b>	± 3.3% (adjusted for weighting)
<b>Survey mode</b>	Web-based interviews
<b>Full results</b>	Available online at <a href="http://today.yougov.com/news/categories/economist/">http://today.yougov.com/news/categories/economist/</a> .