

Interviewing: February 11 - 15, 2016
Sample: 2000 Adults nationwide online
1240 registered voters nationwide online



The Economist/YouGov Poll

Weekly Tracking

For immediate release

1. Approval of Obama as President – Historical

Do you approve or disapprove of the way Barack Obama is handling his job as President?

	All Adults						
	Total Approve	Total Disapprove	Strongly Approve	Somewhat Approve	Somewhat Disapprove	Strongly Disapprove	Not Sure
February 12-16, 2016	45%	49%	19%	26%	12%	37%	7%
January 29-February 2, 2016	43%	51%	21%	22%	15%	36%	5%
January 15-19, 2016	43%	52%	20%	23%	13%	39%	5%
January 2-4, 2016	42%	52%	16%	26%	15%	37%	6%
December 19-21, 2015	43%	52%	18%	25%	14%	38%	4%
December 5-7, 2015	42%	53%	17%	25%	16%	37%	5%
November 21-23, 2015	45%	50%	19%	26%	13%	37%	5%
November 7-9, 2015	45%	48%	19%	26%	12%	36%	7%
October 24-26, 2015	43%	51%	19%	24%	15%	36%	7%
October 10-12, 2015	44%	48%	17%	27%	13%	35%	7%
One Year Ago	45%	51%	19%	26%	13%	38%	4%

	Registered Voters						
	Total Approve	Total Disapprove	Strongly Approve	Somewhat Approve	Somewhat Disapprove	Strongly Disapprove	Not Sure
February 12-16, 2016	43%	55%	22%	21%	12%	43%	2%
January 29-February 2, 2016	42%	56%	21%	21%	12%	44%	1%
January 15-19, 2016	43%	55%	22%	21%	12%	43%	2%
January 2-4, 2016	43%	54%	19%	24%	13%	41%	3%
December 19-21, 2015	42%	56%	20%	22%	12%	44%	2%
December 5-7, 2015	42%	56%	19%	23%	13%	43%	3%
November 21-23, 2015	44%	53%	21%	23%	10%	43%	2%
November 7-9, 2015	45%	53%	22%	23%	10%	43%	3%
October 24-26, 2015	42%	56%	20%	22%	13%	43%	2%
October 10-12, 2015	44%	53%	19%	25%	12%	41%	3%
One Year Ago	45%	53%	20%	25%	12%	41%	2%

Obama Approval

"Do you approve or disapprove of the way Barack Obama is handling his job as President?"

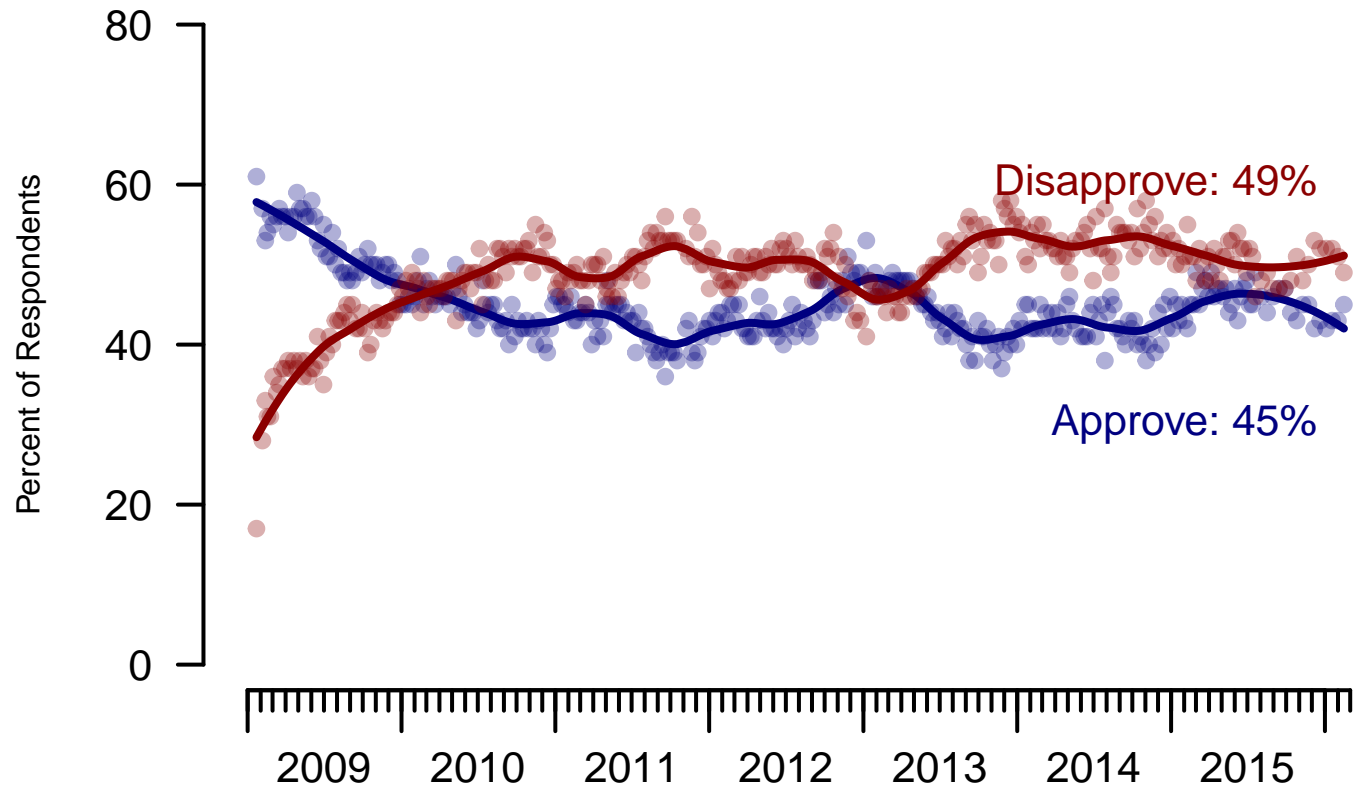


Figure 1: Obama Approval – All Adults

Obama Approval

"Do you approve or disapprove of the way Barack Obama is handling his job as President?"

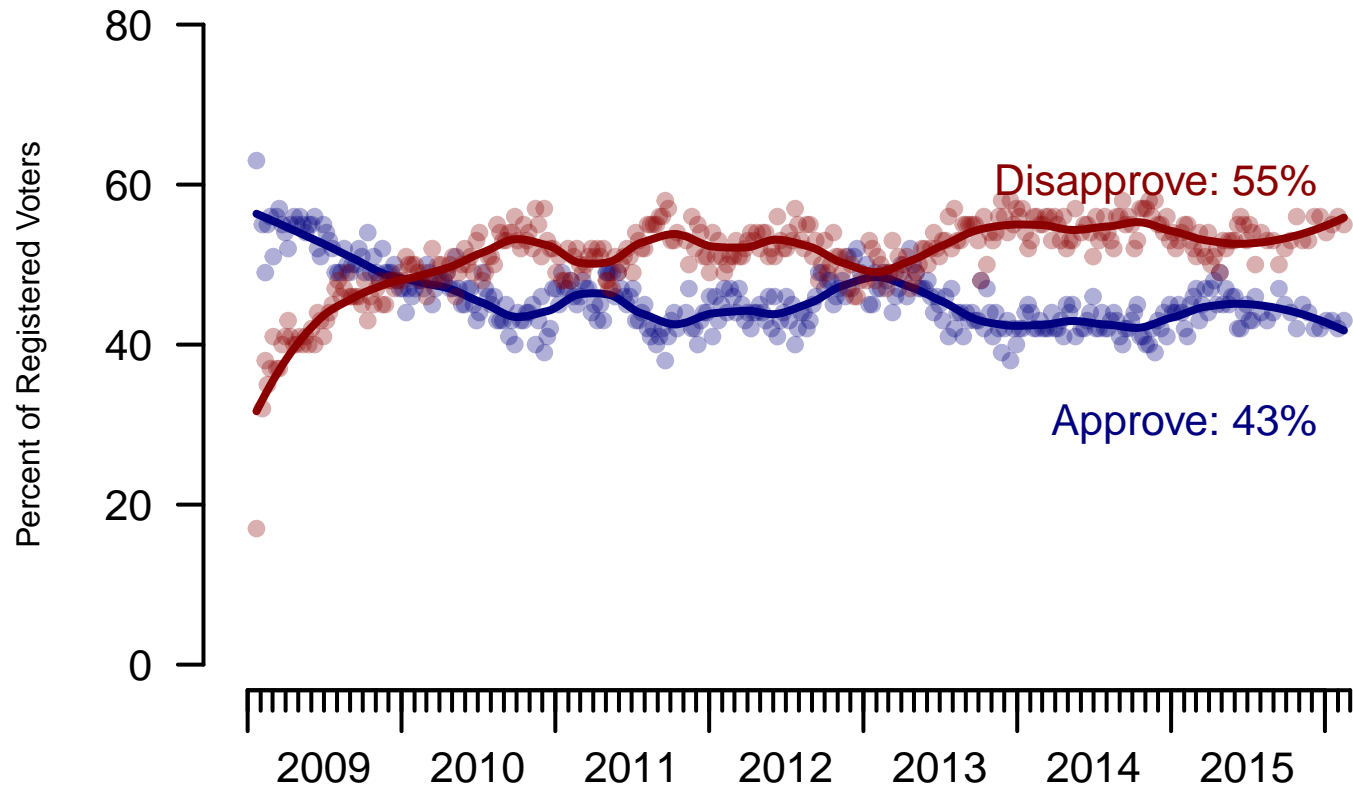


Figure 2: Obama Approval – Registered Voters

2. Approval of Obama as President – This Week – All Adults

Do you approve or disapprove of the way Barack Obama is handling his job as President?

	Age (4 category)					Race			Census Region			
	Total	Under 30	30-44	45-64	65+	White	Black	Hispanic	North-east	Mid-west	South	West
Strongly Approve	19%	17%	15%	23%	20%	14%	48%	22%	18%	17%	20%	21%
Somewhat Approve	26%	36%	26%	24%	17%	23%	31%	35%	25%	24%	25%	28%
Somewhat Disapprove	12%	13%	15%	9%	9%	12%	5%	14%	12%	13%	11%	10%
Strongly Disapprove	37%	21%	33%	42%	52%	45%	10%	16%	33%	40%	37%	36%
Not Sure	7%	13%	11%	3%	2%	6%	6%	13%	11%	5%	7%	4%
Totals (Unweighted N)	100% (2,000)	100% (411)	100% (526)	100% (786)	100% (277)	100% (1,490)	100% (241)	100% (269)	100% (390)	100% (448)	100% (721)	100% (441)

	Party ID			Ideology			Gender		Family Income (3 category)			Prefer not to say	
	Total	Dem	Ind	Rep	Lib	Mod	Con	Male	Female	Under 50	50-100		100+
Strongly Approve	19%	44%	12%	2%	45%	18%	6%	18%	20%	19%	18%	19%	21%
Somewhat Approve	26%	39%	26%	11%	40%	29%	13%	26%	25%	28%	23%	26%	20%
Somewhat Disapprove	12%	8%	11%	16%	7%	14%	12%	10%	13%	13%	14%	7%	9%
Strongly Disapprove	37%	8%	37%	68%	6%	29%	64%	39%	34%	33%	42%	43%	36%
Not Sure	7%	1%	14%	2%	1%	11%	5%	6%	7%	7%	3%	5%	15%
Totals (Unweighted N)	100% (2,000)	100% (725)	100% (778)	100% (497)	100% (512)	100% (897)	100% (591)	100% (910)	100% (1,090)	100% (1,029)	100% (488)	100% (232)	100% (250)

3. Approval of U.S. Congress – Historical

Overall, do you approve or disapprove of the way that the United States Congress is handling its job?

	All Adults							
	Total Approve	Total Disapprove	Strongly Approve	Somewhat Approve	Neutral	Somewhat Disapprove	Strongly Disapprove	Not Sure
February 12-16, 2016	12%	58%	3%	9%	18%	22%	36%	12%
January 29-February 2, 2016	12%	59%	3%	9%	18%	23%	36%	11%
January 15-19, 2016	13%	57%	3%	10%	18%	21%	36%	12%
January 2-4, 2016	12%	56%	2%	10%	21%	22%	34%	12%
December 19-21, 2015	13%	59%	2%	11%	18%	23%	36%	10%
December 5-7, 2015	13%	55%	3%	10%	20%	22%	33%	12%
November 21-23, 2015	13%	56%	3%	10%	20%	24%	32%	11%
November 7-9, 2015	11%	58%	3%	8%	17%	22%	36%	14%
October 24-26, 2015	12%	59%	3%	9%	16%	22%	37%	13%
October 10-12, 2015	9%	59%	2%	7%	18%	22%	37%	14%
One Year Ago	12%	61%	3%	9%	19%	25%	36%	8%

	Registered Voters							
	Total Approve	Total Disapprove	Strongly Approve	Somewhat Approve	Neutral	Somewhat Disapprove	Strongly Disapprove	Not Sure
February 12-16, 2016	9%	70%	2%	7%	14%	26%	44%	7%
January 29-February 2, 2016	10%	69%	2%	8%	16%	24%	45%	6%
January 15-19, 2016	12%	66%	3%	9%	14%	25%	41%	7%
January 2-4, 2016	10%	67%	2%	8%	17%	26%	41%	6%
December 19-21, 2015	10%	70%	2%	8%	14%	26%	44%	6%
December 5-7, 2015	10%	67%	2%	8%	18%	26%	41%	6%
November 21-23, 2015	13%	65%	2%	11%	17%	27%	38%	5%
November 7-9, 2015	10%	69%	3%	7%	15%	25%	44%	6%
October 24-26, 2015	11%	68%	3%	8%	16%	24%	44%	5%
October 10-12, 2015	9%	69%	2%	7%	15%	23%	46%	7%
One Year Ago	13%	63%	4%	9%	20%	25%	38%	5%

Congress Approval

"Do you approve of the way the
U.S. Congress is handling its job?"

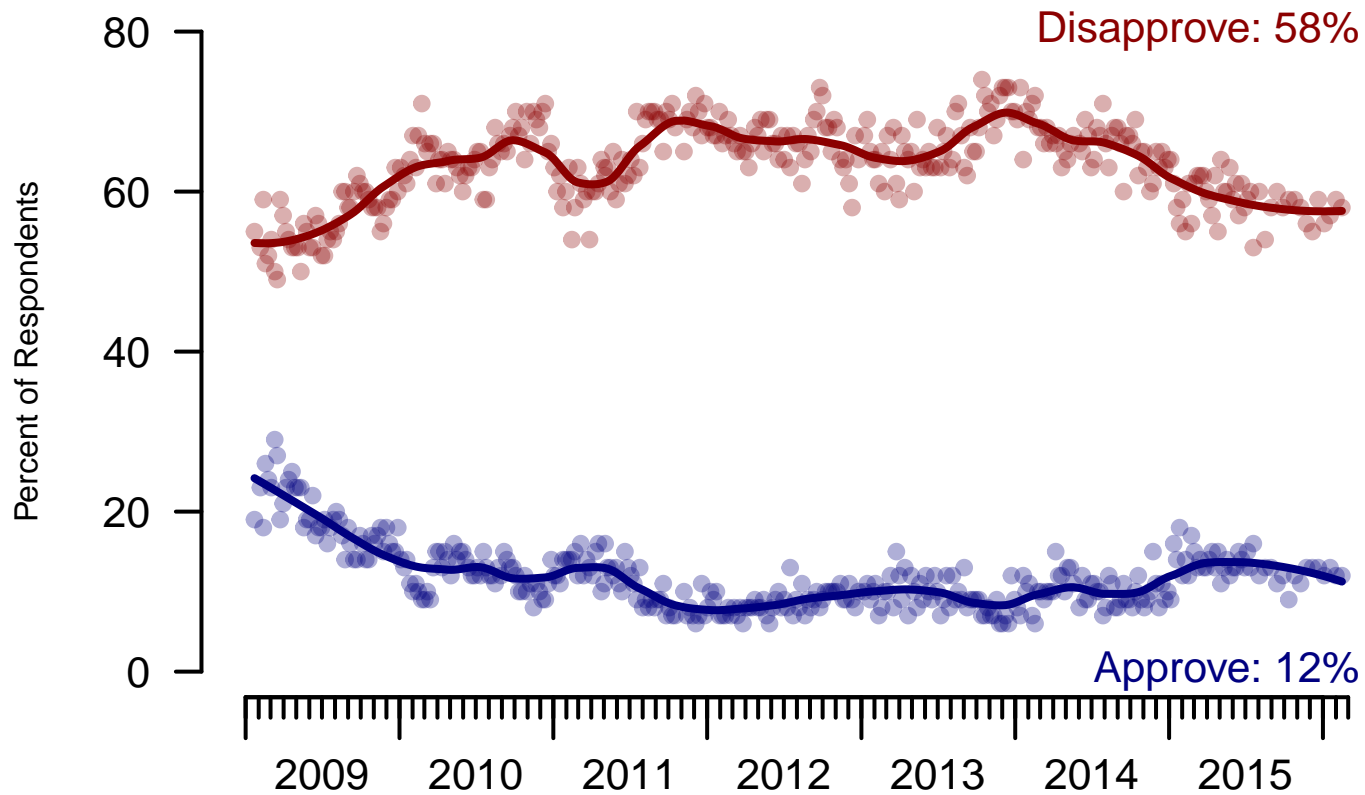


Figure 3: Congress Approval – All Adults

Congress Approval

"Do you approve of the way the
U.S. Congress is handling its job?"

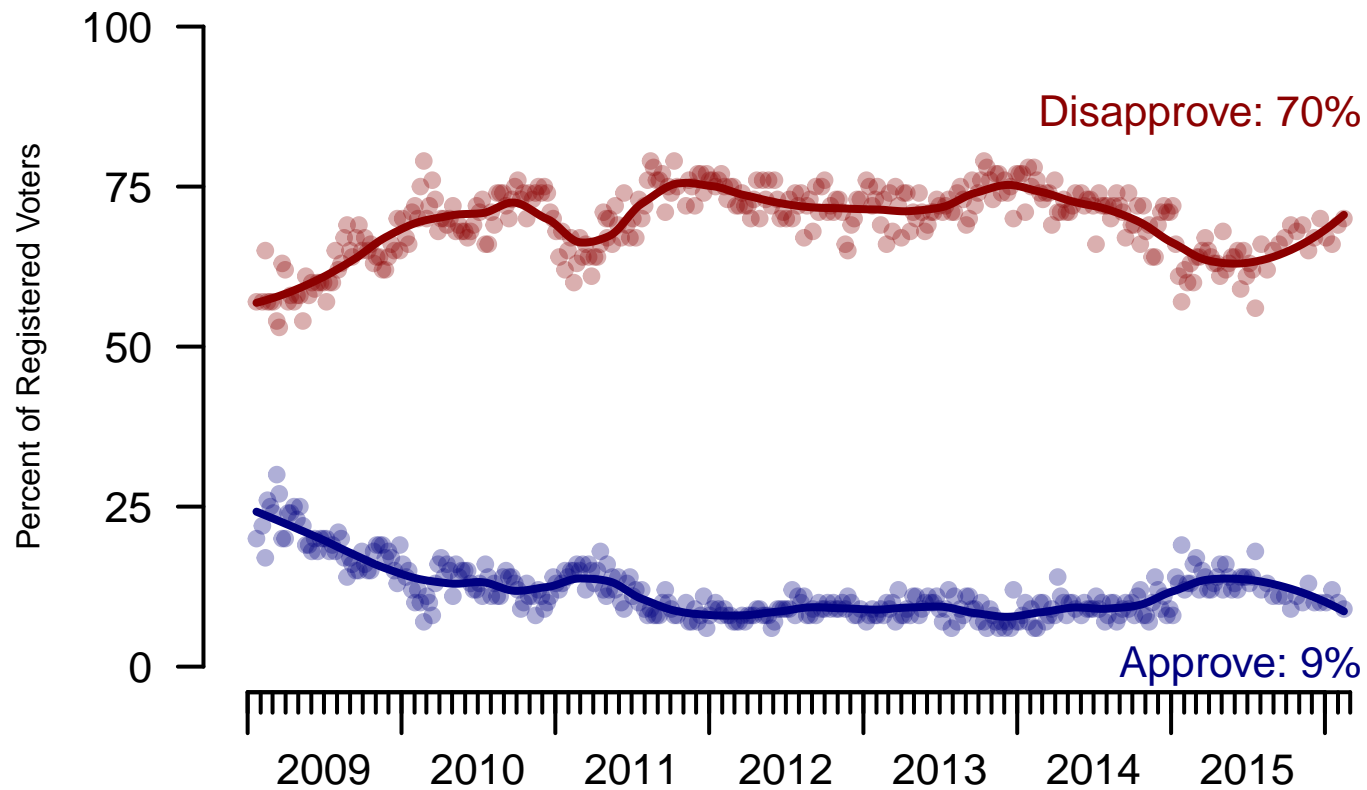


Figure 4: Congress Approval – Registered Voters

4. Approval of U.S. Congress – This Week – All Adults

Overall, do you approve or disapprove of the way that the United States Congress is handling its job?

	Age (4 category)					Race			Census Region			
	Total	Under 30	30-44	45-64	65+	White	Black	Hispanic	North-east	Mid-west	South	West
Strongly approve	3%	3%	4%	2%	1%	1%	9%	4%	2%	2%	2%	3%
Somewhat approve	9%	13%	8%	9%	5%	8%	11%	14%	6%	9%	9%	11%
Neither approve nor disapprove	18%	23%	19%	17%	12%	16%	24%	23%	22%	19%	17%	15%
Somewhat disapprove	22%	17%	21%	22%	28%	23%	16%	19%	20%	24%	23%	20%
Strongly disapprove	36%	24%	30%	42%	50%	41%	26%	18%	34%	36%	37%	39%
Not sure	12%	21%	18%	7%	5%	10%	13%	23%	15%	10%	12%	12%
Totals (Unweighted N)	100% (1,968)	100% (399)	100% (517)	100% (776)	100% (276)	100% (1,476)	100% (230)	100% (262)	100% (379)	100% (442)	100% (707)	100% (440)

	Party ID			Ideology			Gender		Family Income (3 category)				
	Total	Dem	Ind	Rep	Lib	Mod	Con	Male	Female	Under 50	50-100	100+	Prefer not to say
Strongly approve	3%	5%	1%	2%	3%	3%	2%	2%	3%	3%	2%	1%	2%
Somewhat approve	9%	9%	6%	12%	11%	7%	10%	8%	10%	11%	8%	6%	6%
Neither approve nor disapprove	18%	21%	15%	19%	11%	21%	18%	18%	17%	19%	21%	9%	15%
Somewhat disapprove	22%	18%	18%	32%	15%	17%	32%	21%	23%	19%	25%	27%	23%
Strongly disapprove	36%	39%	41%	26%	53%	33%	31%	42%	31%	34%	36%	52%	33%
Not sure	12%	8%	18%	9%	6%	19%	8%	9%	15%	13%	8%	5%	21%
Totals (Unweighted N)	100% (1,968)	100% (717)	100% (764)	100% (487)	100% (508)	100% (880)	100% (580)	100% (899)	100% (1,069)	100% (1,010)	100% (484)	100% (230)	100% (243)

5. Direction of country – Historical

Would you say things in this country today are...

	All Adults		
	Right Direction	Wrong Track	Not Sure
February 12-16, 2016	27%	63%	9%
January 29-February 2, 2016	27%	63%	10%
January 15-19, 2016	25%	65%	10%
January 2-4, 2016	26%	63%	11%
December 19-21, 2015	24%	64%	12%
December 5-7, 2015	24%	64%	12%
November 21-23, 2015	24%	64%	12%
November 7-9, 2015	26%	63%	11%
October 24-26, 2015	27%	62%	11%
October 10-12, 2015	27%	60%	13%
One Year Ago	29%	59%	12%

	Registered Voters		
	Right Direction	Wrong Track	Not Sure
February 12-16, 2016	28%	66%	6%
January 29-February 2, 2016	27%	66%	7%
January 15-19, 2016	28%	65%	7%
January 2-4, 2016	27%	65%	8%
December 19-21, 2015	26%	66%	9%
December 5-7, 2015	25%	67%	8%
November 21-23, 2015	26%	65%	9%
November 7-9, 2015	28%	65%	7%
October 24-26, 2015	26%	66%	8%
October 10-12, 2015	27%	65%	9%
One Year Ago	29%	60%	11%

Direction of Country

"Would you say things in this country today are generally headed in the right direction or off on the wrong track?"

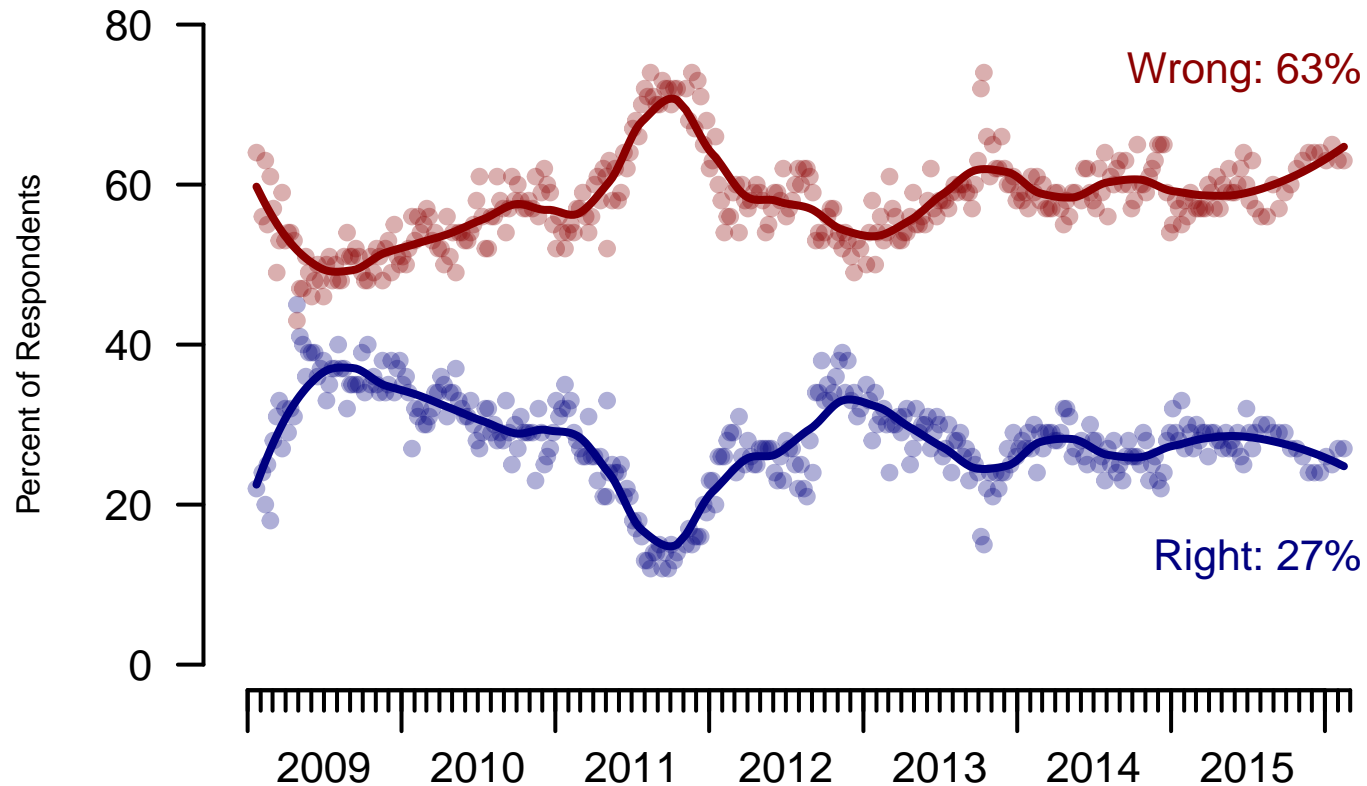


Figure 5: Direction of Country – All Adults

Direction of Country

"Would you say things in this country today are generally headed in the right direction or off on the wrong track?"

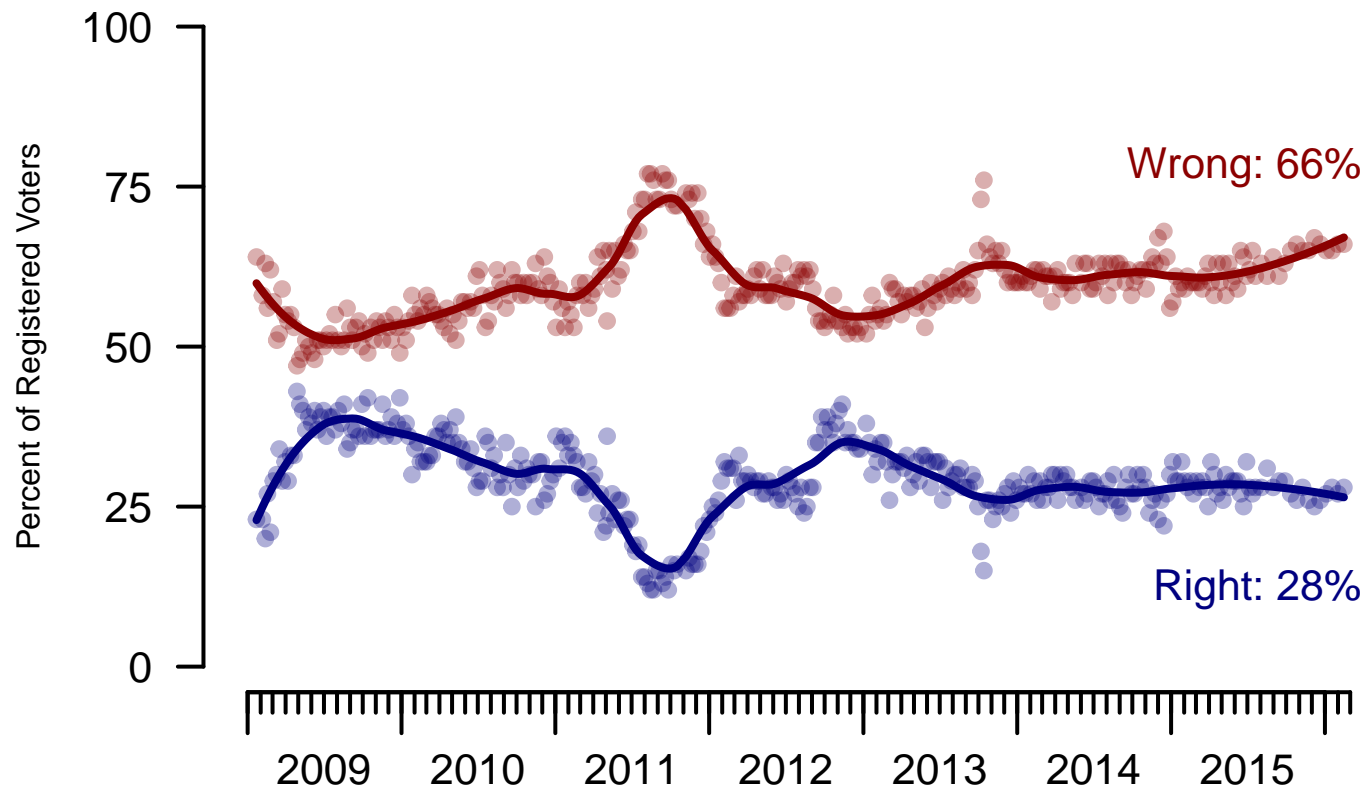


Figure 6: Direction of Country – Registered Voters

6. Direction of Country – This Week – All Adults

Would you say things in this country today are...

	Age (4 category)					Race			Census Region			
	Total	Under 30	30-44	45-64	65+	White	Black	Hispanic	North-east	Mid-west	South	West
Generally headed in the right direction	27%	32%	27%	28%	22%	22%	47%	42%	26%	27%	27%	29%
Off on the wrong track	63%	55%	61%	66%	70%	70%	42%	45%	59%	64%	65%	63%
Not sure	9%	12%	13%	6%	8%	9%	11%	12%	15%	9%	8%	8%
Totals (Unweighted N)	100% (2,000)	100% (411)	100% (526)	100% (786)	100% (277)	100% (1,490)	100% (241)	100% (269)	100% (390)	100% (448)	100% (721)	100% (441)

	Party ID			Ideology			Gender		Family Income (3 category)				
	Total	Dem	Ind	Rep	Lib	Mod	Con	Male	Female	Under 50	50-100	100+	Prefer not to say
Generally headed in the right direction	27%	53%	20%	10%	52%	27%	14%	30%	25%	26%	28%	32%	28%
Off on the wrong track	63%	38%	66%	86%	38%	60%	82%	62%	64%	63%	66%	63%	58%
Not sure	9%	9%	14%	4%	10%	14%	4%	7%	11%	11%	6%	4%	14%
Totals (Unweighted N)	100% (2,000)	100% (725)	100% (778)	100% (497)	100% (512)	100% (897)	100% (591)	100% (910)	100% (1,090)	100% (1,029)	100% (488)	100% (232)	100% (250)

The Economist/YouGov Poll
February 11 - 15, 2016



Sponsorship	<i>The Economist</i>
Fieldwork	YouGov
Interviewing Dates	February 11 - 15, 2016
Target population	U.S. citizens, aged 18 and over.
Sampling method	Respondents were selected from YouGov's opt-in Internet panel using sample matching. A random sample (stratified by age, gender, race, education, and region) was selected from the 2010 American Community Study. Voter registration was imputed from the November 2010 Current Population Survey Registration and Voting Supplement. Religion, political interest, minor party identification, and non-placement on an ideology scale, were imputed from the 2008 Pew Religion in American Life Survey.
Weighting	The sample was weighted using propensity scores based on age, gender, race, education, news interest, voter registration, and non-placement on an ideology scale. The weights range from 0.12 to 4.06, with a mean of one and a standard deviation of 0.8.
Number of respondents	2000
Margin of error	± 2.8% (adjusted for weighting)
Margin of error (Registered Voters)	± 3.1% (adjusted for weighting)
Survey mode	Web-based interviews
Full results	Available online at http://today.yougov.com/news/categories/economist/ .