

Interviewing: September 3 - 5, 2017  
Sample: 1500 Adults nationwide online  
1142 registered voters nationwide online



# *The Economist/YouGov* Poll

## Weekly Tracking

For immediate release

**1. Presidential Job Approval – Historical**

Do you approve or disapprove of the way [President's name] is handling his job as President?

	All Adults						
	Total Approve	Total Disapprove	Strongly Approve	Somewhat Approve	Somewhat Disapprove	Strongly Disapprove	Not Sure
September 1-5, 2017	41%	52%	21%	20%	13%	39%	8%
August 25-29, 2017	38%	53%	18%	20%	12%	41%	10%
August 18-22, 2017	39%	51%	18%	21%	12%	39%	9%
August 12-14, 2017	39%	51%	19%	20%	12%	39%	10%
August 5-7, 2017	37%	53%	18%	19%	14%	39%	11%
July 29-31, 2017	37%	54%	16%	21%	13%	41%	9%
July 22-24, 2017	39%	51%	20%	19%	12%	39%	10%
July 15-17, 2017	38%	54%	20%	18%	13%	41%	9%
July 8-10, 2017	37%	52%	20%	17%	14%	38%	11%
July 1-3, 2017	38%	52%	20%	18%	13%	39%	10%
One Year Ago	52%	46%	27%	25%	13%	33%	3%

	Registered Voters						
	Total Approve	Total Disapprove	Strongly Approve	Somewhat Approve	Somewhat Disapprove	Strongly Disapprove	Not Sure
September 1-5, 2017	42%	54%	23%	19%	13%	41%	5%
August 25-29, 2017	40%	55%	21%	19%	10%	45%	5%
August 18-22, 2017	40%	54%	20%	20%	11%	43%	5%
August 12-14, 2017	42%	54%	22%	20%	12%	42%	5%
August 5-7, 2017	40%	54%	21%	19%	12%	42%	7%
July 29-31, 2017	39%	55%	19%	20%	11%	44%	5%
July 22-24, 2017	41%	54%	23%	18%	11%	43%	5%
July 15-17, 2017	39%	56%	22%	17%	12%	44%	6%
July 8-10, 2017	41%	52%	24%	17%	11%	41%	7%
July 1-3, 2017	41%	53%	23%	18%	12%	41%	7%
One Year Ago	50%	48%	26%	24%	10%	38%	2%

## Presidential Job Approval

"Do you approve or disapprove of the way Donald Trump is handling his job as President?"

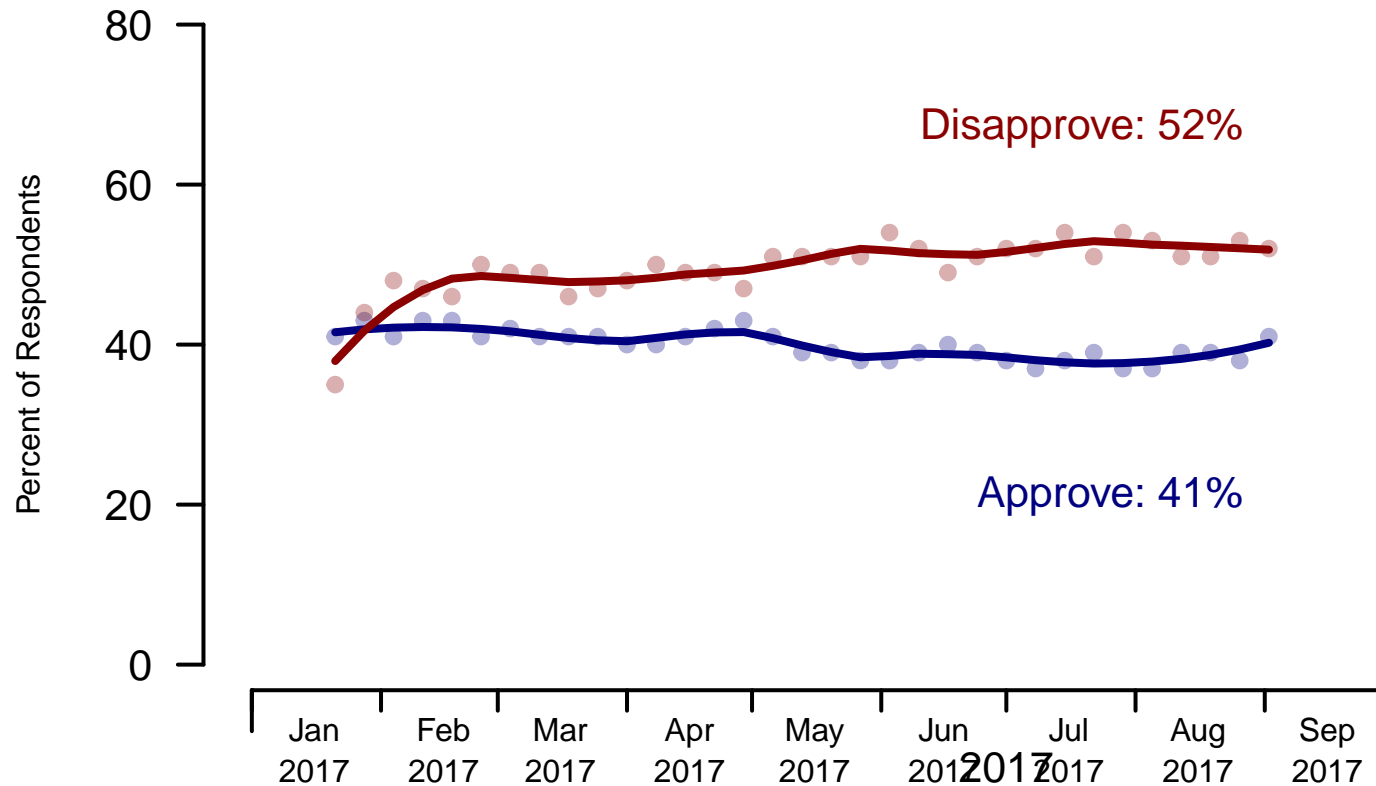


Figure 1: Trump Approval – All Adults

## Presidential Job Approval

"Do you approve or disapprove of the way Donald Trump is handling his job as President?"

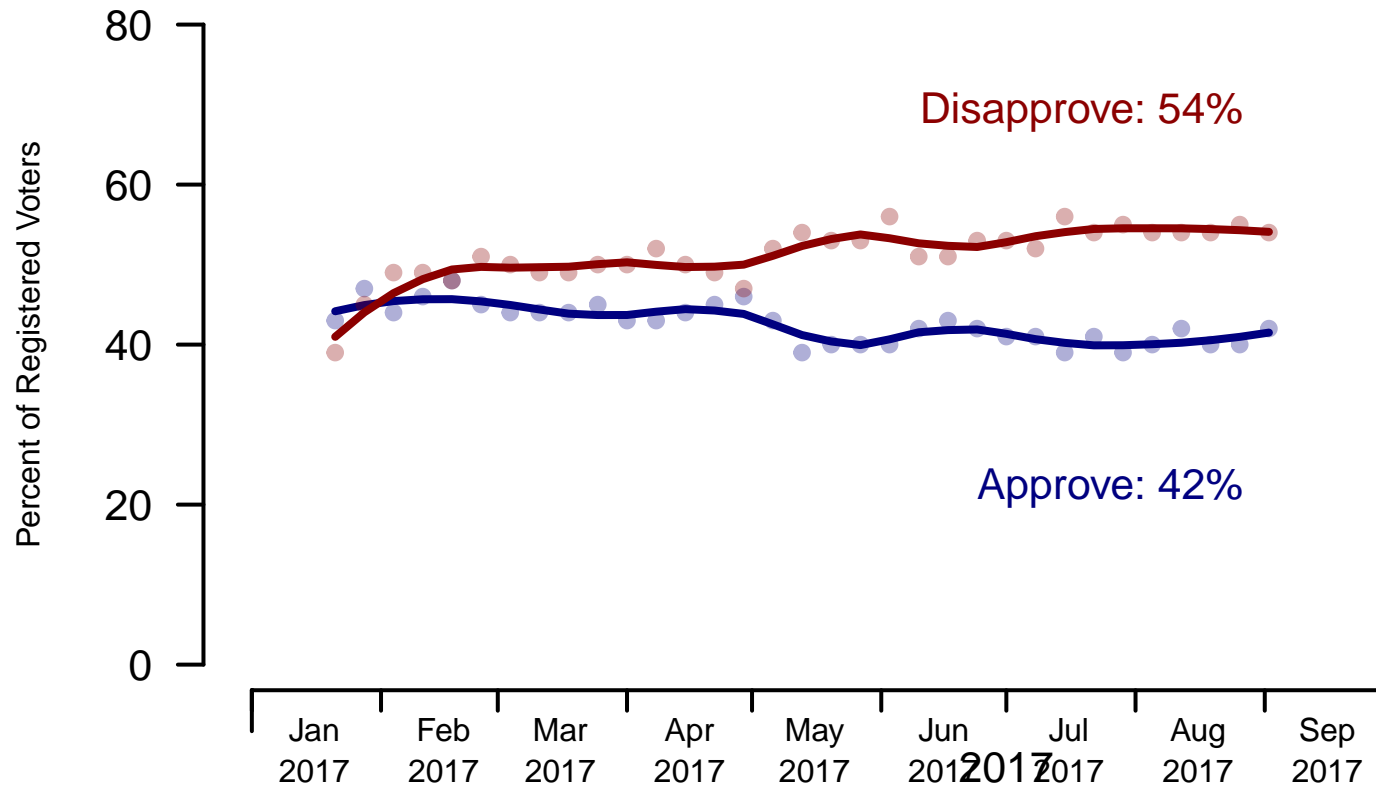


Figure 2: Trump Approval – Registered Voters

**2. President Trump Job Approval – This Week – All Adults**

Do you approve or disapprove of the way Donald Trump is handling his job as President?

	Age (4 category)					Race			Census Region			
	Total	Under 30	30-44	45-64	65+	White	Black	Hispanic	North-east	Mid-west	South	West
Strongly approve	21%	8%	18%	25%	30%	25%	2%	11%	15%	24%	22%	19%
Somewhat approve	20%	21%	21%	19%	18%	22%	5%	18%	16%	24%	20%	16%
Somewhat disapprove	13%	15%	14%	12%	10%	14%	8%	10%	18%	11%	13%	11%
Strongly disapprove	39%	42%	36%	38%	41%	33%	67%	49%	38%	36%	38%	47%
Not sure	8%	13%	12%	6%	1%	6%	18%	12%	13%	6%	7%	8%
Totals (Unweighted N)	100% (1,500)	100% (300)	100% (378)	100% (577)	100% (245)	100% (1,201)	100% (162)	100% (137)	100% (289)	100% (365)	100% (565)	100% (281)

	Party ID			Ideology			Gender		Family Income (3 category)			Prefer not to say	
	Total	Dem	Ind	Rep	Lib	Mod	Con	Male	Female	Under 50	50-100		100+
Strongly approve	21%	5%	15%	47%	3%	14%	46%	23%	18%	19%	21%	25%	21%
Somewhat approve	20%	8%	18%	35%	7%	20%	30%	21%	19%	18%	26%	17%	17%
Somewhat disapprove	13%	11%	17%	9%	11%	15%	11%	13%	13%	13%	12%	16%	10%
Strongly disapprove	39%	73%	35%	7%	75%	38%	10%	37%	41%	42%	37%	37%	34%
Not sure	8%	4%	15%	2%	4%	14%	3%	6%	10%	8%	4%	4%	19%
Totals (Unweighted N)	100% (1,500)	100% (524)	100% (599)	100% (377)	100% (458)	100% (618)	100% (424)	100% (669)	100% (831)	100% (741)	100% (402)	100% (192)	100% (165)

**3. Approval of U.S. Congress – Historical**

Overall, do you approve or disapprove of the way that the United States Congress is handling its job?

	All Adults							
	Total Approve	Total Disapprove	Strongly Approve	Somewhat Approve	Neutral	Somewhat Disapprove	Strongly Disapprove	Not Sure
September 1-5, 2017	11%	57%	2%	9%	17%	21%	36%	15%
August 25-29, 2017	11%	59%	3%	8%	15%	22%	37%	15%
August 18-22, 2017	12%	60%	3%	9%	15%	21%	39%	13%
August 12-14, 2017	10%	62%	3%	7%	14%	22%	40%	15%
August 5-7, 2017	11%	58%	2%	9%	15%	22%	36%	16%
July 29-31, 2017	10%	62%	3%	7%	13%	23%	39%	16%
July 22-24, 2017	12%	58%	4%	8%	18%	23%	35%	12%
July 15-17, 2017	12%	57%	3%	9%	17%	21%	36%	15%
July 8-10, 2017	12%	56%	4%	8%	16%	20%	36%	14%
July 1-3, 2017	12%	56%	3%	9%	16%	22%	34%	16%
One Year Ago	10%	63%	3%	7%	18%	22%	41%	9%

	Registered Voters							
	Total Approve	Total Disapprove	Strongly Approve	Somewhat Approve	Neutral	Somewhat Disapprove	Strongly Disapprove	Not Sure
September 1-5, 2017	10%	63%	2%	8%	16%	23%	40%	10%
August 25-29, 2017	11%	69%	3%	8%	12%	26%	43%	8%
August 18-22, 2017	11%	67%	4%	7%	14%	24%	43%	9%
August 12-14, 2017	8%	68%	3%	5%	13%	24%	44%	10%
August 5-7, 2017	11%	67%	3%	8%	13%	24%	43%	10%
July 29-31, 2017	9%	68%	3%	6%	12%	24%	44%	11%
July 22-24, 2017	11%	67%	3%	8%	15%	26%	41%	7%
July 15-17, 2017	10%	64%	3%	7%	15%	23%	41%	11%
July 8-10, 2017	13%	65%	4%	9%	14%	22%	43%	9%
July 1-3, 2017	14%	61%	4%	10%	14%	23%	38%	11%
One Year Ago	10%	67%	3%	7%	16%	22%	45%	7%

### Congress Approval

"Do you approve of the way the U.S. Congress is handling its job?"

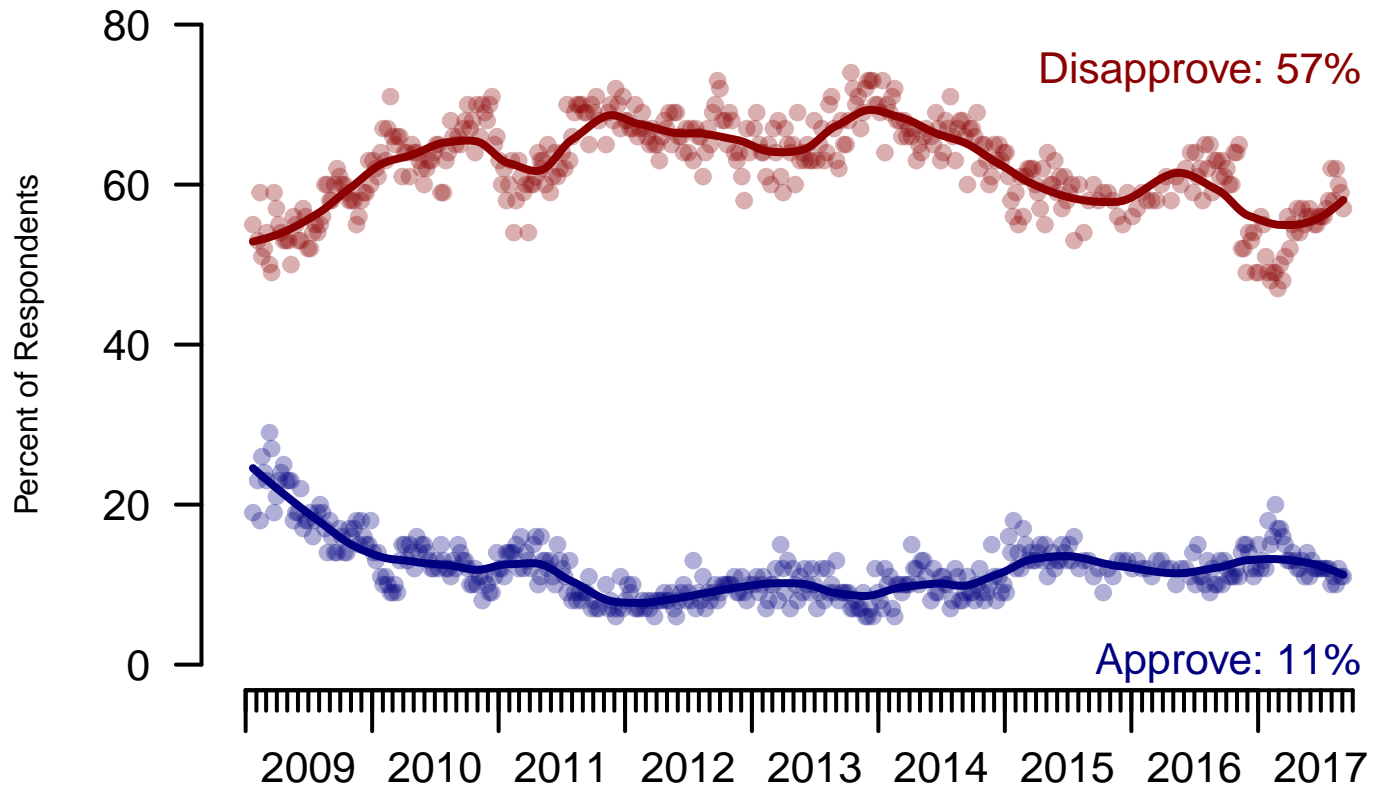


Figure 3: Congress Approval – All Adults

## Congress Approval

"Do you approve of the way the  
U.S. Congress is handling its job?"

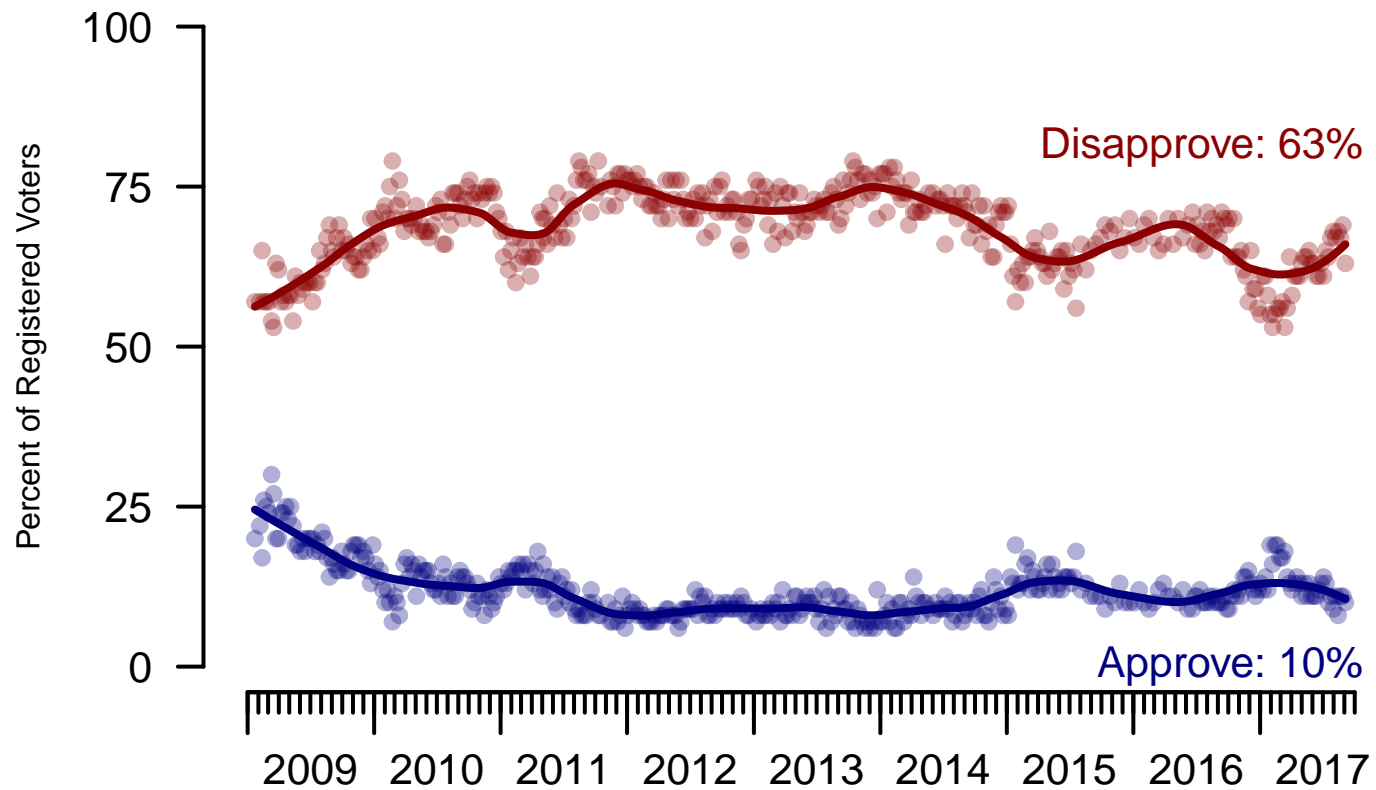


Figure 4: Congress Approval – Registered Voters



**4. Approval of U.S. Congress – This Week – All Adults**

Overall, do you approve or disapprove of the way that the United States Congress is handling its job?

	Age (4 category)					Race			Census Region			
	Total	Under 30	30-44	45-64	65+	White	Black	Hispanic	North-east	Mid-west	South	West
Strongly approve	2%	3%	6%	1%	—	2%	2%	5%	2%	2%	3%	3%
Somewhat approve	9%	12%	9%	9%	6%	10%	3%	9%	10%	10%	9%	6%
Neither approve nor disapprove	17%	18%	18%	17%	13%	16%	16%	20%	19%	14%	19%	13%
Somewhat disapprove	21%	17%	18%	24%	24%	23%	14%	17%	23%	24%	20%	19%
Strongly disapprove	36%	28%	30%	36%	51%	36%	42%	31%	31%	35%	37%	42%
Not sure	15%	22%	19%	12%	6%	13%	23%	19%	15%	15%	13%	17%
Totals (Unweighted N)	100% (1,496)	100% (298)	100% (378)	100% (575)	100% (245)	100% (1,198)	100% (162)	100% (136)	100% (289)	100% (364)	100% (564)	100% (279)

	Party ID			Ideology			Gender		Family Income (3 category)			Prefer not to say	
	Total	Dem	Ind	Rep	Lib	Mod	Con	Male	Female	Under 50	50-100		100+
Strongly approve	2%	3%	1%	4%	2%	2%	3%	3%	2%	3%	2%	3%	—
Somewhat approve	9%	7%	7%	14%	5%	10%	11%	9%	9%	8%	11%	7%	9%
Neither approve nor disapprove	17%	15%	16%	20%	8%	19%	21%	16%	18%	18%	17%	11%	16%
Somewhat disapprove	21%	20%	17%	29%	24%	17%	25%	21%	21%	21%	24%	25%	13%
Strongly disapprove	36%	44%	38%	25%	49%	31%	33%	43%	30%	35%	37%	50%	27%
Not sure	15%	12%	21%	8%	12%	21%	7%	9%	20%	15%	8%	5%	35%
Totals (Unweighted N)	100% (1,496)	100% (522)	100% (597)	100% (377)	100% (457)	100% (617)	100% (422)	100% (668)	100% (828)	100% (740)	100% (402)	100% (192)	100% (162)

**5. Direction of country – Historical**

Would you say things in this country today are...

	All Adults		
	Right Direction	Wrong Track	Not Sure
September 1-5, 2017	31%	55%	14%
August 25-29, 2017	27%	60%	13%
August 18-22, 2017	25%	59%	16%
August 12-14, 2017	27%	59%	14%
August 5-7, 2017	30%	54%	16%
July 29-31, 2017	29%	54%	17%
July 22-24, 2017	31%	55%	14%
July 15-17, 2017	31%	56%	13%
July 8-10, 2017	32%	54%	14%
July 1-3, 2017	30%	54%	16%
One Year Ago	27%	62%	11%

	Registered Voters		
	Right Direction	Wrong Track	Not Sure
September 1-5, 2017	31%	57%	12%
August 25-29, 2017	28%	62%	10%
August 18-22, 2017	26%	62%	12%
August 12-14, 2017	28%	61%	11%
August 5-7, 2017	31%	57%	12%
July 29-31, 2017	30%	57%	13%
July 22-24, 2017	32%	57%	11%
July 15-17, 2017	31%	58%	11%
July 8-10, 2017	34%	55%	11%
July 1-3, 2017	33%	55%	12%
One Year Ago	28%	62%	10%

## Direction of Country

"Would you say things in this country today are generally headed in the right direction or off on the wrong track?"

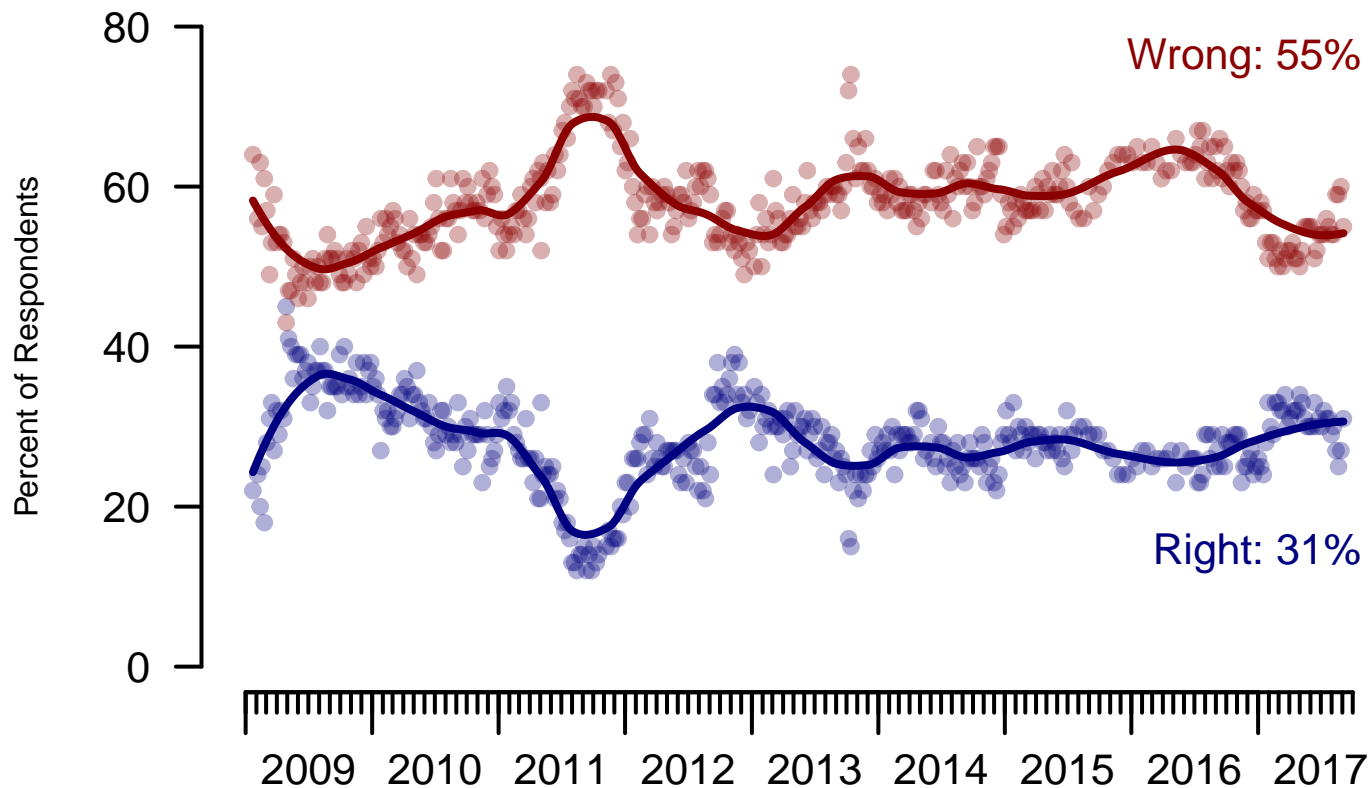


Figure 5: Direction of Country – All Adults

## Direction of Country

"Would you say things in this country today are generally headed in the right direction or off on the wrong track?"

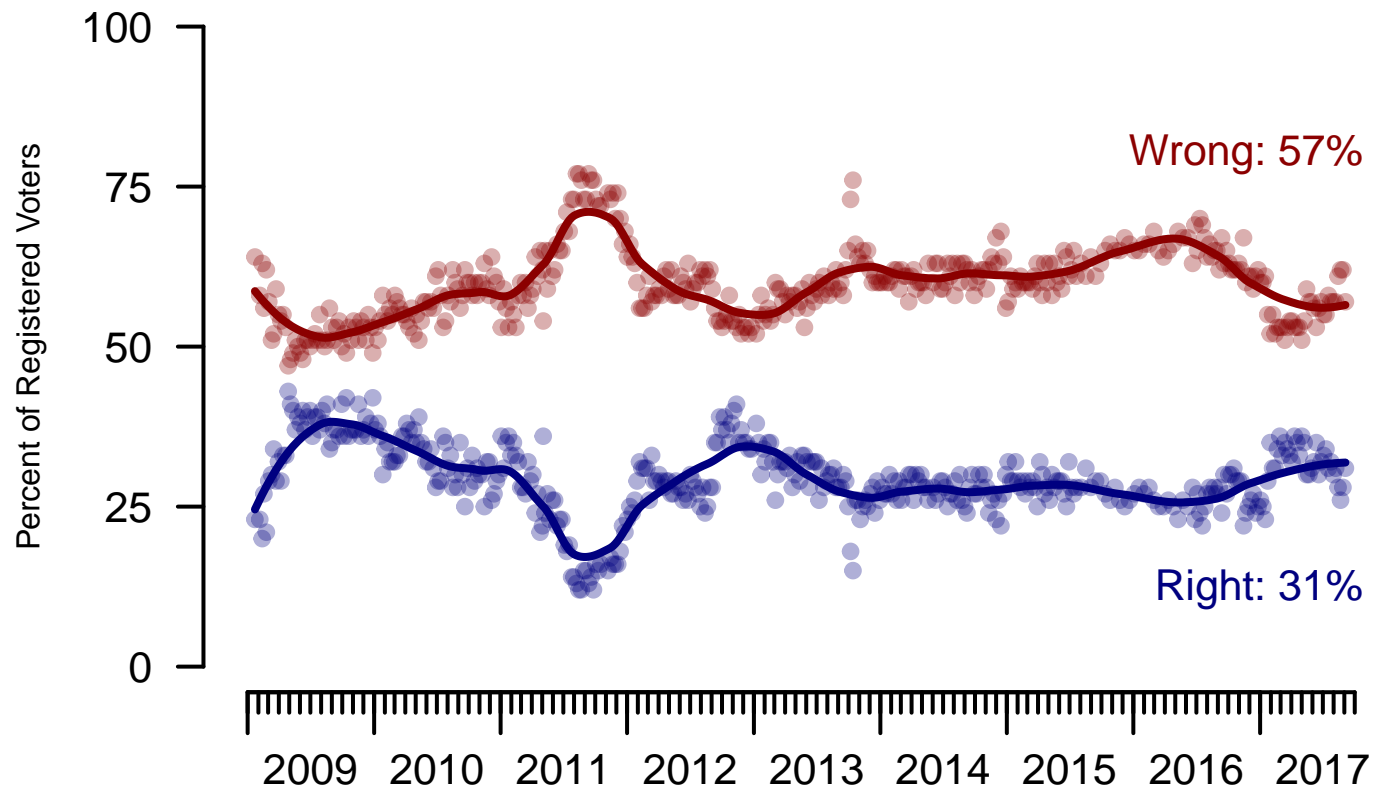


Figure 6: Direction of Country – Registered Voters

**6. Direction of Country – This Week – All Adults**

Would you say things in this country today are...

	Age (4 category)					Race			Census Region			
	Total	Under 30	30-44	45-64	65+	White	Black	Hispanic	North-east	Mid-west	South	West
Generally headed in the right direction	31%	25%	28%	34%	36%	34%	10%	32%	27%	35%	32%	27%
Off on the wrong track	55%	57%	57%	53%	56%	52%	73%	56%	52%	55%	57%	57%
Not sure	14%	18%	15%	13%	9%	13%	17%	12%	22%	10%	11%	16%
Totals (Unweighted N)	100% (1,500)	100% (300)	100% (378)	100% (577)	100% (245)	100% (1,201)	100% (162)	100% (137)	100% (289)	100% (365)	100% (565)	100% (281)

	Party ID			Ideology			Gender		Family Income (3 category)				
	Total	Dem	Ind	Rep	Lib	Mod	Con	Male	Female	Under 50	50-100	100+	Prefer not to say
Generally headed in the right direction	31%	13%	25%	59%	10%	26%	56%	38%	24%	29%	37%	31%	25%
Off on the wrong track	55%	77%	56%	30%	83%	55%	34%	51%	60%	59%	50%	59%	49%
Not sure	14%	10%	19%	11%	8%	19%	11%	11%	16%	12%	12%	11%	26%
Totals (Unweighted N)	100% (1,500)	100% (524)	100% (599)	100% (377)	100% (458)	100% (618)	100% (424)	100% (669)	100% (831)	100% (741)	100% (402)	100% (192)	100% (165)

**The Economist/YouGov Poll**  
September 3 - 5, 2017



<b>Sponsorship</b>	<i>The Economist</i>
<b>Fieldwork</b>	YouGov
<b>Interviewing Dates</b>	September 3 - 5, 2017
<b>Target population</b>	U.S. citizens, aged 18 and over.
<b>Sampling method</b>	Respondents were selected from YouGov's opt-in Internet panel using sample matching. A random sample (stratified by age, gender, race, education, and region) was selected from the 2014 American Community Study. Voter registration was imputed from the November 2014 Current Population Survey Registration and Voting Supplement.
<b>Weighting</b>	The sample was weighted based on age, gender, race, education, and 2016 Presidential vote. The weights range from 0.23 to 5.15, with a mean of one and a standard deviation of 0.7.
<b>Number of respondents</b>	1500
<b>Margin of error</b>	± 3% (adjusted for weighting)
<b>Margin of error (Registered Voters)</b>	± 3.3% (adjusted for weighting)
<b>Survey mode</b>	Web-based interviews
<b>Full results</b>	Available online at <a href="http://today.yougov.com/news/categories/economist/">http://today.yougov.com/news/categories/economist/</a> .