

Interviewing: April 26-28, 2014  
Sample: 1000 Adults nationwide online  
684 registered voters nationwide online



# *The Economist/YouGov* Poll

## Weekly Tracking

For immediate release

**1. Approval of Obama as President – Historical**

Do you approve or disapprove of the way Barack Obama is handling his job as President?

	All Adults						
	Total Approve	Total Disapprove	Strongly Approve	Somewhat Approve	Somewhat Disapprove	Strongly Disapprove	Not Sure
April 26-28, 2014	45%	51%	17%	28%	18%	33%	4%
April 19-21, 2014	42%	51%	17%	25%	16%	35%	7%
April 12-14, 2014	41%	53%	15%	26%	15%	38%	6%
April 5-7, 2014	44%	51%	17%	27%	15%	36%	5%
March 29-31, 2014	42%	52%	15%	27%	15%	37%	5%
March 22-24, 2014	44%	52%	14%	30%	17%	35%	4%
March 15-17, 2014	42%	53%	15%	27%	15%	38%	5%
March 8-10, 2014	44%	53%	15%	29%	16%	37%	3%
March 1-3, 2014	42%	55%	17%	25%	16%	39%	3%
February 22-24, 2014	45%	52%	17%	28%	13%	39%	3%
One Year Ago	47%	47%	20%	27%	11%	36%	5%

	Registered Voters						
	Total Approve	Total Disapprove	Strongly Approve	Somewhat Approve	Somewhat Disapprove	Strongly Disapprove	Not Sure
April 26-28, 2014	45%	52%	18%	27%	15%	37%	3%
April 19-21, 2014	41%	56%	18%	23%	13%	43%	4%
April 12-14, 2014	43%	53%	17%	26%	12%	41%	4%
April 5-7, 2014	42%	55%	17%	25%	12%	43%	2%
March 29-31, 2014	42%	56%	16%	26%	14%	42%	2%
March 22-24, 2014	44%	53%	14%	30%	14%	39%	2%
March 15-17, 2014	42%	56%	16%	26%	12%	44%	2%
March 8-10, 2014	42%	56%	15%	27%	14%	42%	2%
March 1-3, 2014	42%	55%	17%	25%	12%	43%	2%
February 22-24, 2014	43%	55%	16%	27%	11%	44%	2%
One Year Ago	50%	48%	22%	28%	10%	38%	2%

## Obama Approval

"Do you approve or disapprove of the way Barack Obama is handling his job as President?"

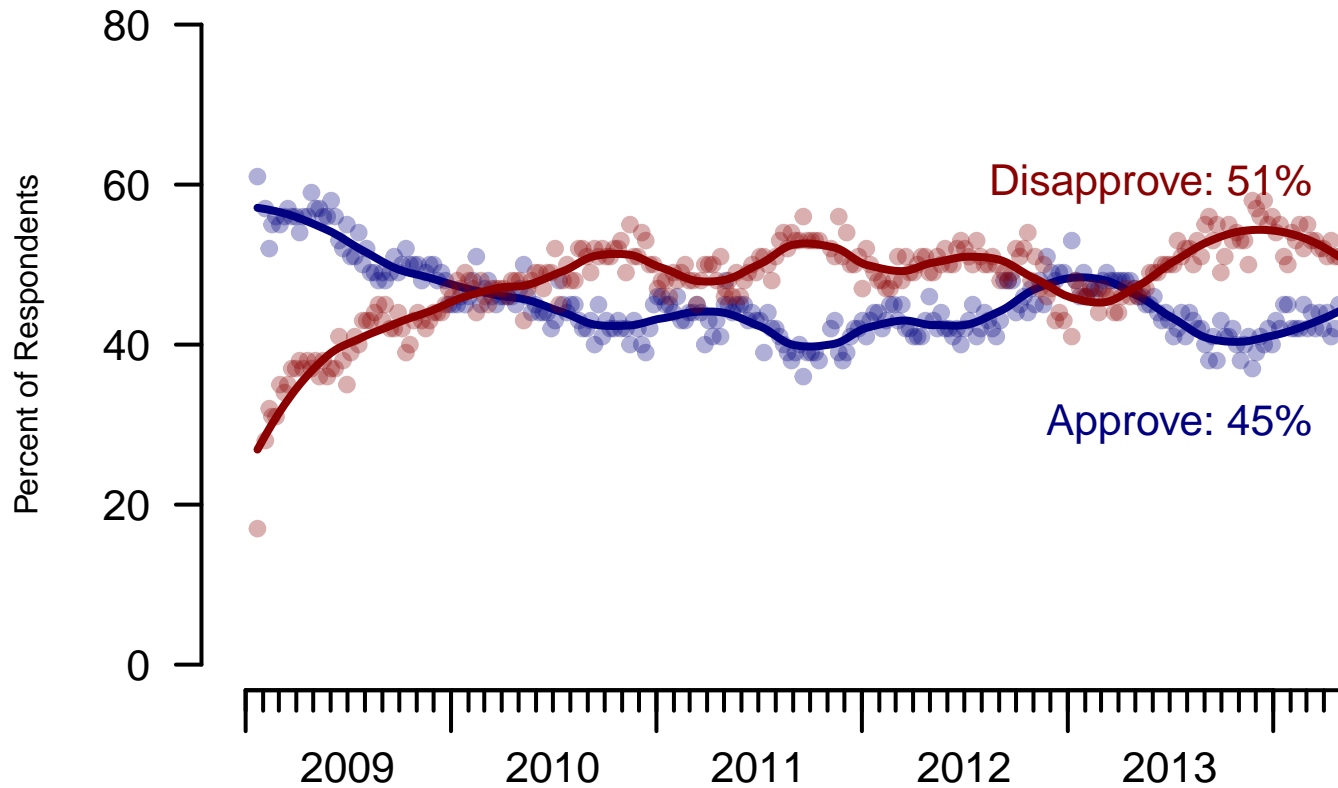


Figure 1: Obama Approval – All Adults

## Obama Approval

"Do you approve or disapprove of the way Barack Obama is handling his job as President?"

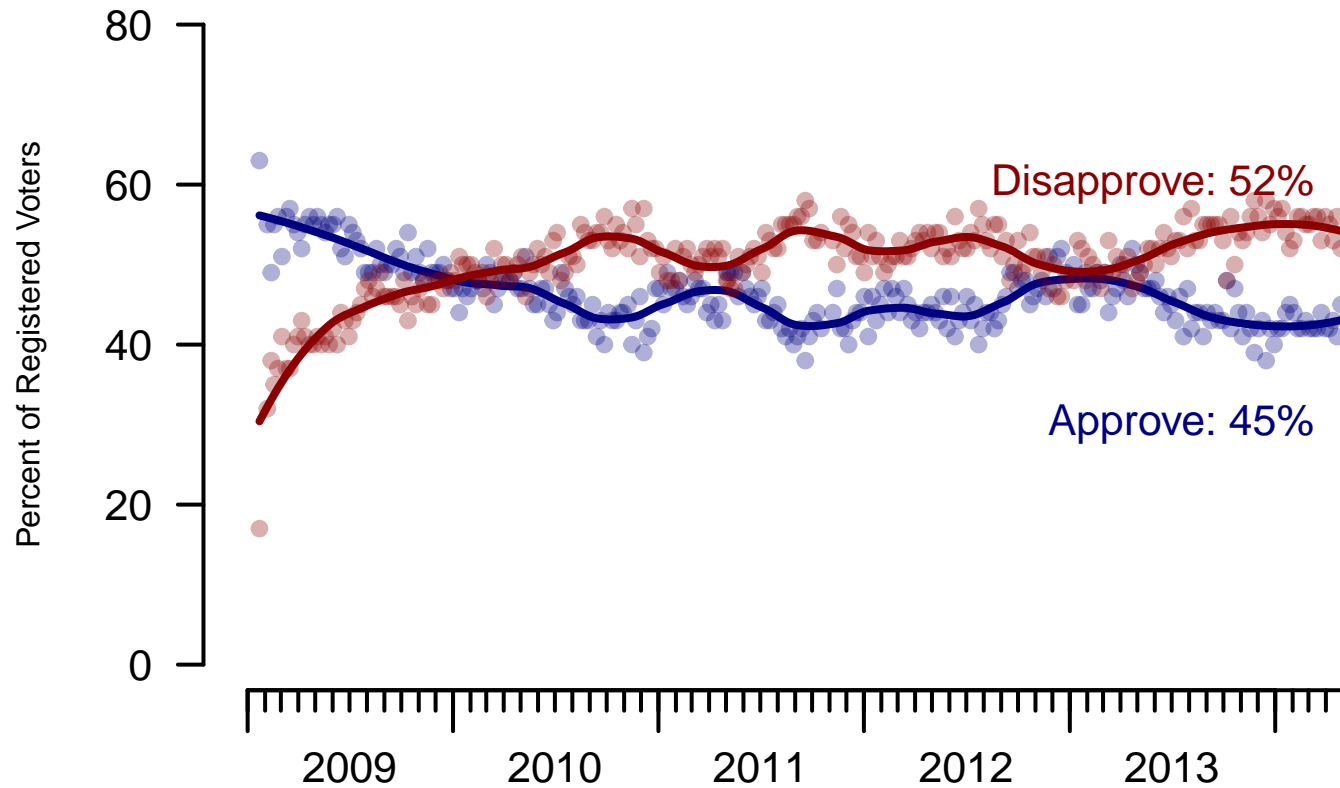


Figure 2: Obama Approval – Registered Voters

**2. Approval of Obama as President – This Week – All Adults**

Do you approve or disapprove of the way Barack Obama is handling his job as President?

	Age					Race				Region			
	Total	18-29	30-44	45-64	65+	White	Black	Hispanic	Other	North-east	Mid-west	South	West
Strongly approve	17%	16%	17%	16%	22%	10%	44%	23%	16%	12%	17%	19%	17%
Somewhat approve	28%	34%	30%	26%	20%	26%	33%	37%	29%	41%	29%	25%	23%
Somewhat disapprove	18%	21%	21%	18%	9%	21%	12%	10%	15%	17%	14%	20%	21%
Strongly disapprove	33%	24%	26%	39%	48%	40%	7%	28%	30%	28%	36%	32%	36%
Not sure	4%	5%	6%	1%	1%	3%	4%	2%	11%	2%	4%	4%	3%
Totals (Unweighted N)	100% (997)	100% (190)	100% (298)	100% (376)	100% (133)	100% (681)	100% (136)	100% (112)	100% (68)	100% (141)	100% (214)	100% (383)	100% (259)

	Party ID			Ideology			Gender		Family Income			
	Total	Dem	Ind	Rep	Lib	Mod	Con	Male	Female	Under 40	40-100	100+
Strongly approve	17%	35%	8%	4%	29%	18%	9%	16%	18%	18%	16%	15%
Somewhat approve	28%	42%	32%	8%	50%	34%	11%	31%	26%	29%	32%	22%
Somewhat disapprove	18%	12%	20%	20%	11%	22%	20%	17%	19%	19%	17%	16%
Strongly disapprove	33%	7%	37%	67%	6%	23%	58%	34%	31%	28%	32%	45%
Not sure	4%	4%	3%	2%	5%	3%	3%	2%	5%	5%	3%	2%
Totals (Unweighted N)	100% (997)	100% (371)	100% (318)	100% (235)	100% (251)	100% (343)	100% (342)	100% (472)	100% (525)	100% (381)	100% (364)	100% (106)

**3. Approval of U.S. Congress – Historical**

Overall, do you approve or disapprove of the way that the United States Congress is handling its job?

All Adults								
	<b>Total Approve</b>	<b>Total Disapprove</b>	Strongly Approve	Somewhat Approve	Neutral	Somewhat Disapprove	Strongly Disapprove	Not Sure
April 26-28, 2014	10%	65%	4%	6%	17%	23%	42%	7%
April 19-21, 2014	12%	63%	2%	10%	17%	24%	39%	8%
April 12-14, 2014	12%	67%	3%	9%	14%	25%	42%	8%
April 5-7, 2014	15%	66%	4%	11%	14%	23%	43%	5%
March 29-31, 2014	10%	67%	3%	7%	15%	24%	43%	7%
March 22-24, 2014	10%	66%	2%	8%	19%	23%	43%	5%
March 15-17, 2014	10%	68%	3%	7%	16%	22%	46%	7%
March 8-10, 2014	9%	66%	1%	8%	17%	24%	42%	7%
March 1-3, 2014	10%	68%	3%	7%	15%	24%	44%	7%
February 22-24, 2014	10%	68%	2%	8%	15%	25%	43%	7%
One Year Ago	12%	65%	2%	10%	13%	19%	46%	10%

Registered Voters								
	<b>Total Approve</b>	<b>Total Disapprove</b>	Strongly Approve	Somewhat Approve	Neutral	Somewhat Disapprove	Strongly Disapprove	Not Sure
April 26-28, 2014	8%	71%	2%	6%	15%	24%	47%	5%
April 19-21, 2014	10%	73%	3%	7%	13%	25%	48%	4%
April 12-14, 2014	11%	71%	3%	8%	14%	25%	46%	5%
April 5-7, 2014	14%	71%	3%	11%	11%	24%	47%	4%
March 29-31, 2014	8%	76%	2%	6%	13%	27%	49%	4%
March 22-24, 2014	9%	69%	1%	8%	17%	24%	45%	5%
March 15-17, 2014	8%	74%	2%	6%	14%	24%	50%	3%
March 8-10, 2014	7%	74%	1%	6%	14%	27%	47%	5%
March 1-3, 2014	10%	73%	2%	8%	13%	24%	49%	4%
February 22-24, 2014	10%	74%	2%	8%	11%	26%	48%	6%
One Year Ago	11%	71%	1%	10%	13%	21%	50%	5%

### Congress Approval

"Do you approve of the way the U.S. Congress is handling its job?"

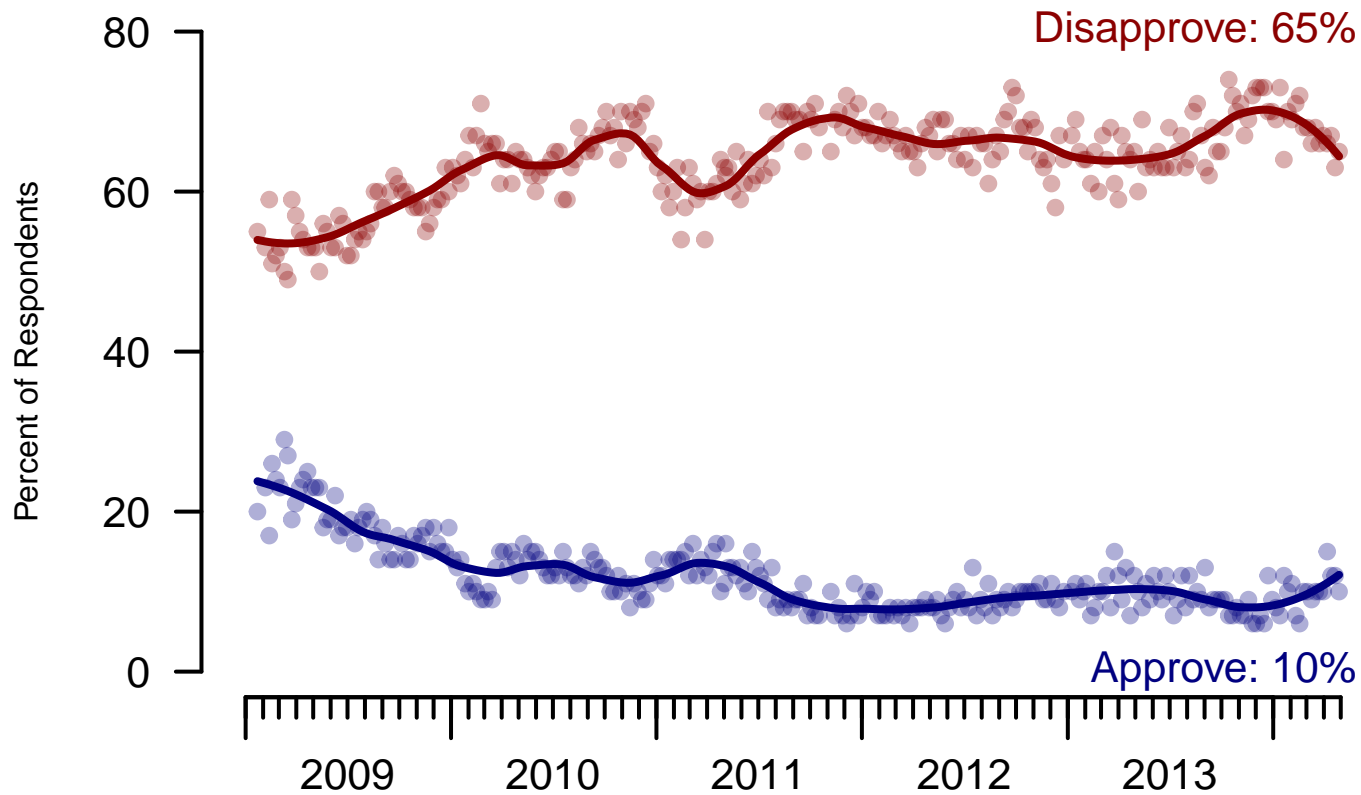


Figure 3: Congress Approval – All Adults

## Congress Approval

"Do you approve of the way the  
U.S. Congress is handling its job?"

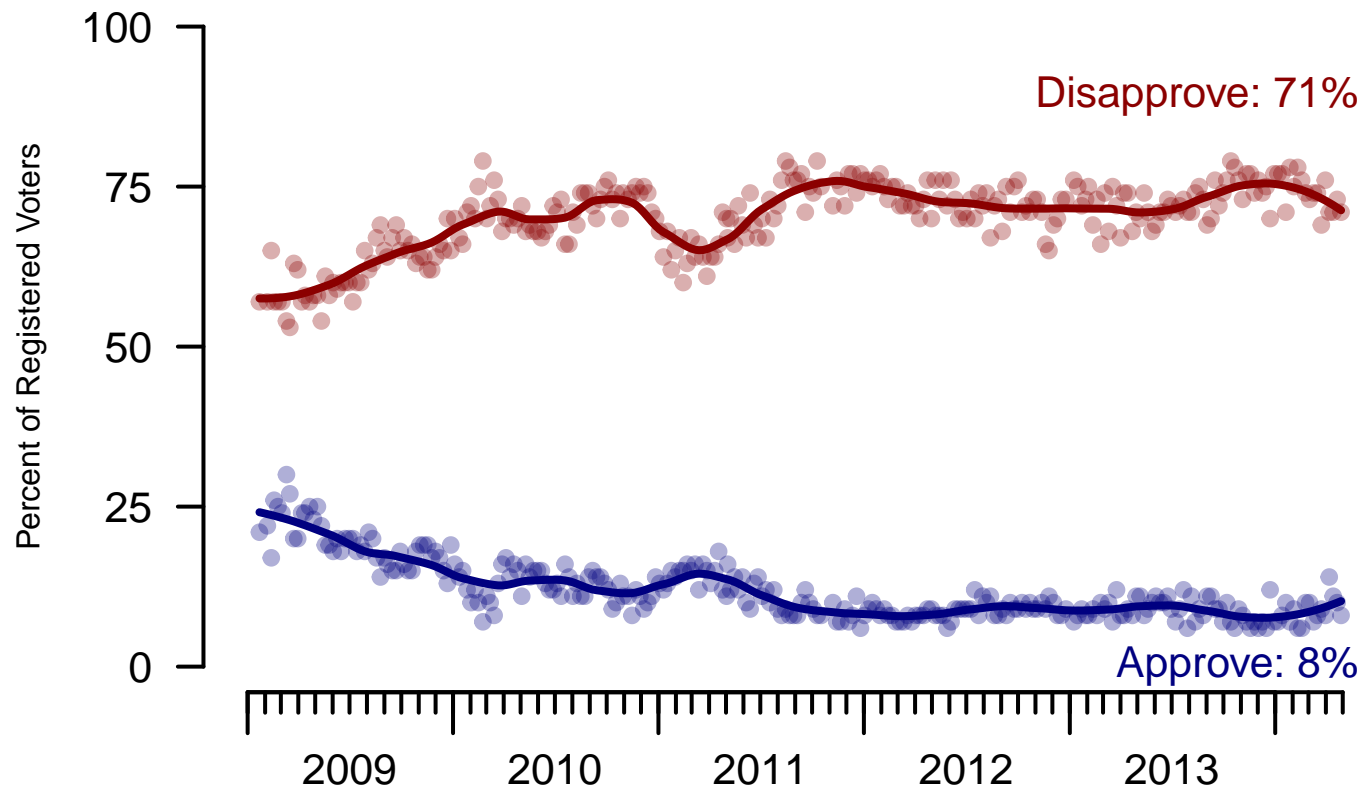


Figure 4: Congress Approval – Registered Voters



**4. Approval of U.S. Congress – This Week – All Adults**

Overall, do you approve or disapprove of the way that the United States Congress is handling its job?

	Age					Race				Region			
	Total	18-29	30-44	45-64	65+	White	Black	Hispanic	Other	North-east	Mid-west	South	West
Strongly approve	4%	9%	3%	2%	1%	3%	12%	4%	4%	2%	1%	7%	5%
Somewhat approve	6%	11%	3%	5%	9%	6%	7%	11%	3%	3%	9%	7%	6%
Neither approve nor disapprove	17%	19%	23%	15%	8%	15%	21%	24%	21%	16%	18%	17%	18%
Somewhat disapprove	23%	17%	27%	25%	23%	26%	20%	18%	14%	26%	20%	23%	25%
Strongly disapprove	42%	34%	33%	49%	57%	45%	29%	38%	45%	47%	48%	36%	42%
Not sure	7%	11%	10%	4%	1%	5%	12%	6%	12%	7%	4%	10%	5%
Totals (Unweighted N)	100% (994)	100% (188)	100% (296)	100% (377)	100% (133)	100% (679)	100% (135)	100% (112)	100% (68)	100% (140)	100% (214)	100% (381)	100% (259)

	Party ID			Ideology			Gender		Family Income			
	Total	Dem	Ind	Rep	Lib	Mod	Con	Male	Female	Under 40	40-100	100+
Strongly approve	4%	7%	1%	2%	2%	4%	5%	4%	4%	6%	3%	3%
Somewhat approve	6%	5%	5%	9%	6%	6%	8%	9%	4%	9%	5%	6%
Neither approve nor disapprove	17%	18%	14%	22%	16%	19%	16%	15%	20%	19%	18%	13%
Somewhat disapprove	23%	21%	19%	35%	20%	18%	31%	22%	24%	23%	24%	23%
Strongly disapprove	42%	41%	54%	29%	50%	45%	36%	48%	36%	35%	42%	50%
Not sure	7%	7%	6%	3%	6%	8%	5%	2%	12%	8%	8%	4%
Totals (Unweighted N)	100% (994)	100% (370)	100% (317)	100% (236)	100% (250)	100% (342)	100% (342)	100% (470)	100% (524)	100% (380)	100% (364)	100% (106)

**5. Direction of country – Historical**

Would you say things in this country today are...

	All Adults		
	Right Direction	Wrong Track	Not Sure
April 26-28, 2014	32%	58%	11%
April 19-21, 2014	32%	55%	13%
April 12-14, 2014	29%	57%	14%
April 5-7, 2014	28%	59%	13%
March 29-31, 2014	28%	59%	13%
March 22-24, 2014	29%	57%	14%
March 15-17, 2014	29%	57%	14%
March 8-10, 2014	29%	57%	14%
March 1-3, 2014	27%	60%	13%
February 22-24, 2014	29%	58%	13%
One Year Ago	27%	59%	14%

	Registered Voters		
	Right Direction	Wrong Track	Not Sure
April 26-28, 2014	30%	60%	10%
April 19-21, 2014	29%	60%	10%
April 12-14, 2014	30%	59%	11%
April 5-7, 2014	26%	62%	12%
March 29-31, 2014	30%	61%	9%
March 22-24, 2014	30%	57%	13%
March 15-17, 2014	28%	61%	11%
March 8-10, 2014	28%	61%	11%
March 1-3, 2014	26%	62%	11%
February 22-24, 2014	29%	59%	12%
One Year Ago	30%	58%	12%

## Direction of Country

"Would you say things in this country today are generally headed in the right direction or off on the wrong track?"

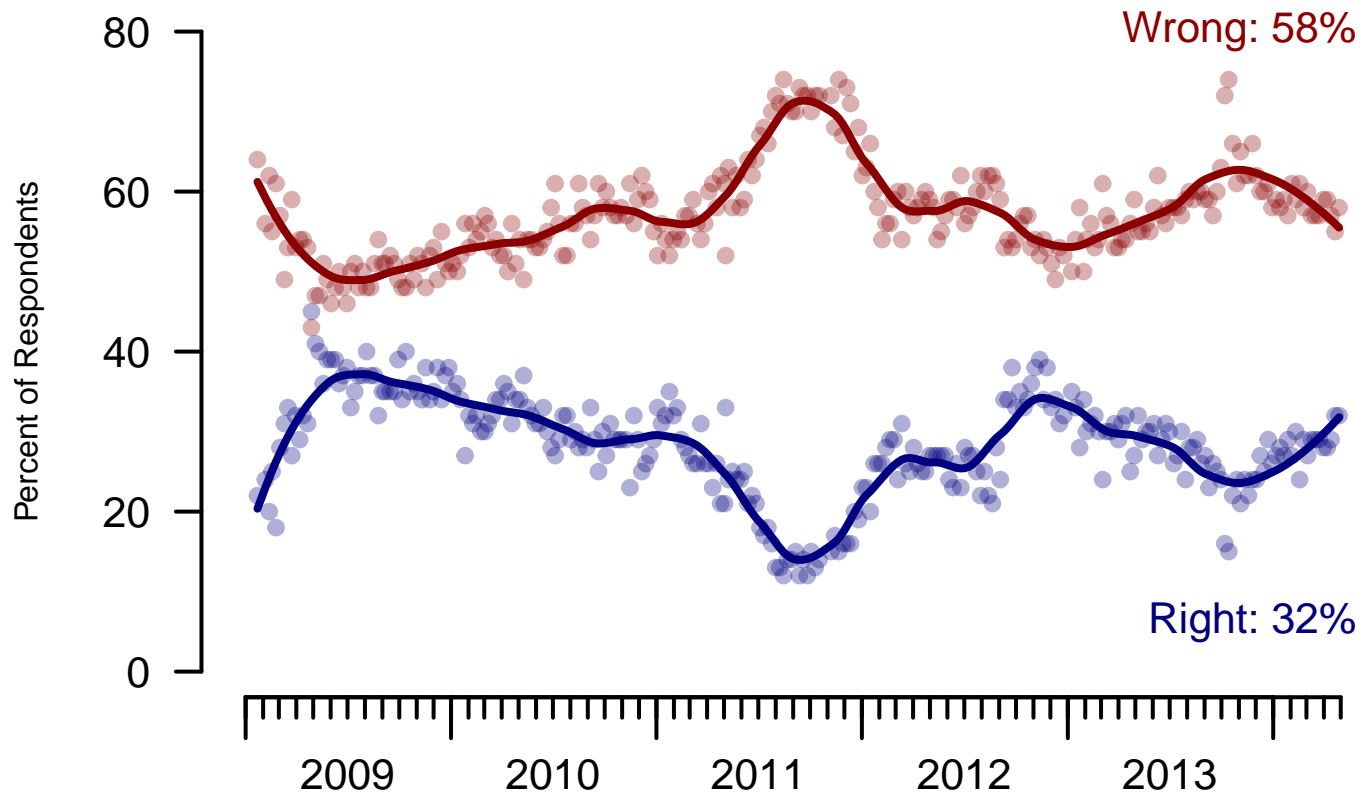


Figure 5: Direction of Country – All Adults

## Direction of Country

"Would you say things in this country today are generally headed in the right direction or off on the wrong track?"

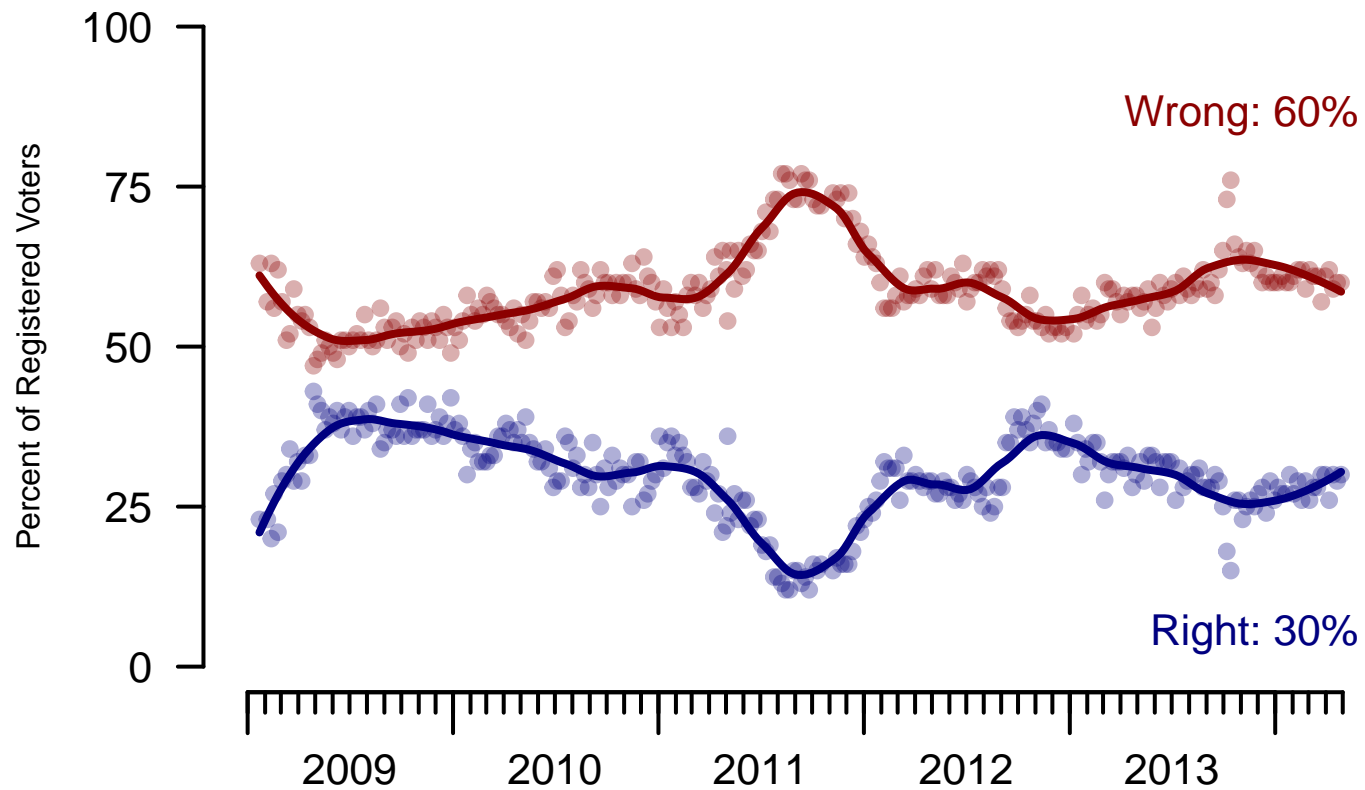


Figure 6: Direction of Country – Registered Voters

**6. Direction of Country – This Week – All Adults**

Would you say things in this country today are...

	Total	Age				Race				Region			
		18-29	30-44	45-64	65+	White	Black	Hispanic	Other	North-east	Mid-west	South	West
Generally headed in the right direction	32%	36%	31%	29%	31%	26%	55%	33%	32%	36%	33%	29%	31%
Off on the wrong track	58%	47%	61%	61%	63%	65%	31%	56%	46%	54%	58%	58%	61%
Not sure	11%	16%	7%	10%	6%	8%	14%	11%	22%	11%	9%	13%	8%
Totals (Unweighted N)	100% (1,000)	100% (191)	100% (299)	100% (377)	100% (133)	100% (683)	100% (137)	100% (112)	100% (68)	100% (141)	100% (215)	100% (385)	100% (259)

	Total	Party ID			Ideology			Gender		Family Income		
		Dem	Ind	Rep	Lib	Mod	Con	Male	Female	Under 40	40-100	100+
Generally headed in the right direction	32%	53%	29%	8%	53%	36%	16%	35%	29%	31%	36%	33%
Off on the wrong track	58%	33%	62%	87%	33%	51%	79%	56%	59%	59%	54%	57%
Not sure	11%	14%	9%	4%	14%	14%	5%	9%	12%	10%	10%	10%
Totals (Unweighted N)	100% (1,000)	100% (372)	100% (318)	100% (237)	100% (251)	100% (344)	100% (344)	100% (473)	100% (527)	100% (383)	100% (365)	100% (106)

<b>Sponsorship</b>	<i>The Economist</i>
<b>Fieldwork</b>	YouGov
<b>Interviewing Dates</b>	April 26-28, 2014
<b>Target population</b>	U.S. citizens, aged 18 and over.
<b>Sampling method</b>	Respondents were selected from YouGov's opt-in Internet panel using sample matching. A random sample (stratified by age, gender, race, education, and region) was selected from the 2010 American Community Study. Voter registration was imputed from the November 2010 Current Population Survey Registration and Voting Supplement. Religion, political interest, minor party identification, and non-placement on an ideology scale, were imputed from the 2008 Pew Religion in American Life Survey.
<b>Weighting</b>	The sample was weighted using propensity scores based on age, gender, race, education, news interest, voter registration, and non-placement on an ideology scale. The weights range from 0.1 to 5.01, with a mean of one and a standard deviation of 0.9.
<b>Number of respondents</b>	1,000
<b>Margin of error</b>	± 4.3% (adjusted for weighting)
<b>Margin of error (Registered Voters)</b>	± 4.6% (adjusted for weighting)
<b>Survey mode</b>	Web-based interviews
<b>Full results</b>	Available online at <a href="http://today.yougov.com/news/categories/economist/">http://today.yougov.com/news/categories/economist/</a> .