

Interviewing: December 14-16, 2013  
Sample: 1000 Adults nationwide online



806 D Street, SE  
Washington, DC 20003

Contact:  
Thomas Riehle  
Ph: (202) 544-2550

# *The Economist/YouGov* Poll

## Weekly Tracking

For immediate release

**1. Approval of Obama as President – Historical**

Do you approve or disapprove of the way Barack Obama is handling his job as President?

|                              | All Adults           |                         |                  |                  |                     |                     |          |
|------------------------------|----------------------|-------------------------|------------------|------------------|---------------------|---------------------|----------|
|                              | <b>Total Approve</b> | <b>Total Disapprove</b> | Strongly Approve | Somewhat Approve | Somewhat Disapprove | Strongly Disapprove | Not Sure |
| December 14-16, 2013         | 40%                  | 58%                     | 14%              | 26%              | 13%                 | 45%                 | 3%       |
| December 7-9, 2013           | 41%                  | 56%                     | 16%              | 25%              | 11%                 | 45%                 | 3%       |
| November 30-December 2, 2013 | 39%                  | 57%                     | 15%              | 24%              | 14%                 | 43%                 | 3%       |
| November 23-25, 2013         | 37%                  | 58%                     | 15%              | 22%              | 12%                 | 46%                 | 4%       |
| November 16-18, 2013         | 41%                  | 50%                     | 13%              | 28%              | 12%                 | 38%                 | 8%       |
| November 9-11, 2013          | 40%                  | 53%                     | 14%              | 26%              | 13%                 | 40%                 | 6%       |
| November 2-4, 2013           | 38%                  | 53%                     | 15%              | 23%              | 11%                 | 42%                 | 8%       |
| October 26-28, 2013          | 40%                  | 54%                     | 13%              | 27%              | 15%                 | 39%                 | 5%       |
| October 19-21, 2013          | 42%                  | 53%                     | 19%              | 23%              | 13%                 | 40%                 | 5%       |
| October 12-14, 2013          | 41%                  | 55%                     | 17%              | 24%              | 13%                 | 42%                 | 4%       |
| One Year Ago                 | 49%                  | 44%                     | 20%              | 29%              | 14%                 | 30%                 | 7%       |

## Obama Approval

"Do you approve or disapprove of the way Barack Obama is handling his job as President?"

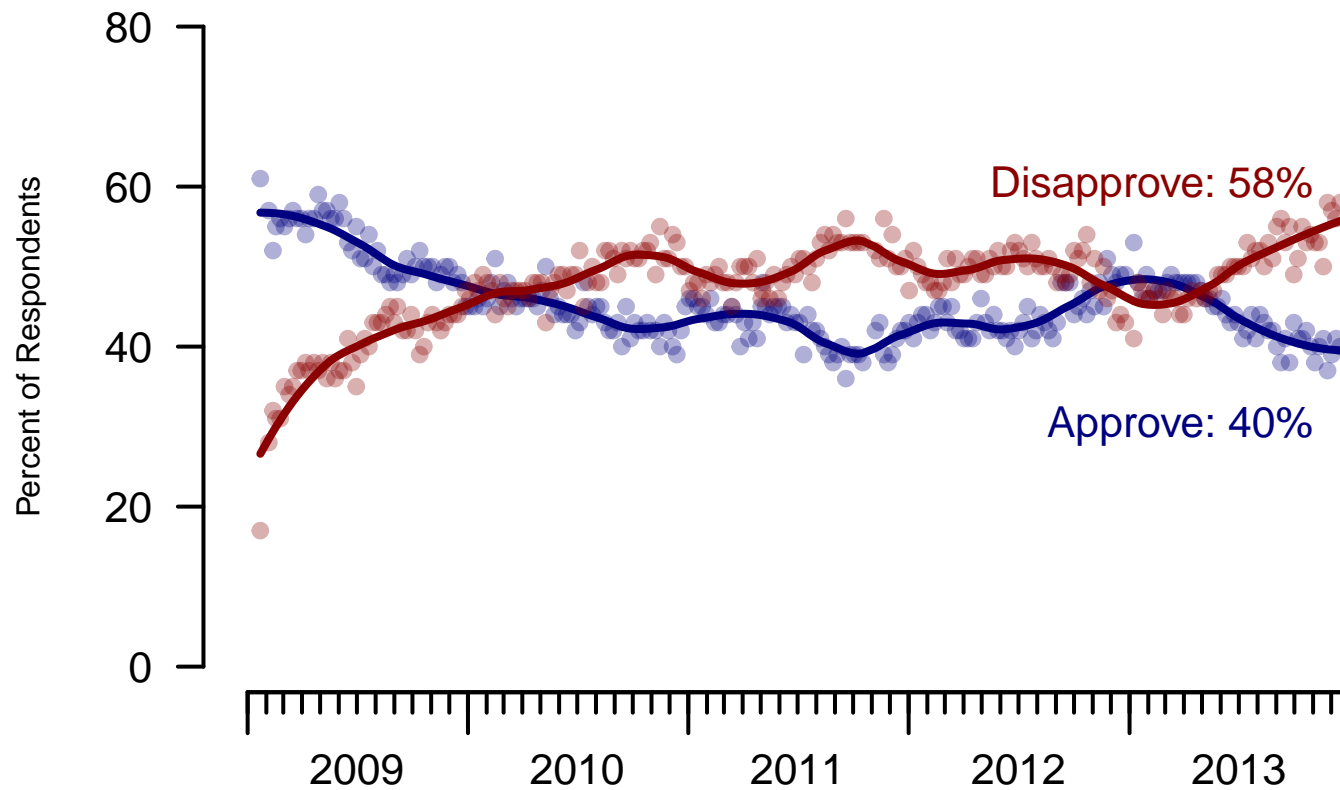


Figure 1: Obama Approval – All Adults

**2. Approval of Obama as President – This Week – All Adults**

Do you approve or disapprove of the way Barack Obama is handling his job as President?

|                       | Age          |            |            |            |            | Race       |            |            | Gender     |            | Education  |              |                  |
|-----------------------|--------------|------------|------------|------------|------------|------------|------------|------------|------------|------------|------------|--------------|------------------|
|                       | Total        | 18-29      | 30-44      | 45-64      | 65+        | White      | Black      | Hispanic   | Male       | Female     | HS or less | Some college | College graduate |
| Strongly approve      | 14%          | 11%        | 13%        | 12%        | 21%        | 9%         | 34%        | 15%        | 10%        | 17%        | 13%        | 13%          | 14%              |
| Somewhat approve      | 26%          | 36%        | 31%        | 20%        | 12%        | 20%        | 36%        | 48%        | 24%        | 28%        | 23%        | 27%          | 29%              |
| Somewhat disapprove   | 13%          | 18%        | 11%        | 10%        | 11%        | 15%        | 6%         | 7%         | 15%        | 11%        | 9%         | 16%          | 14%              |
| Strongly disapprove   | 45%          | 32%        | 38%        | 56%        | 54%        | 53%        | 15%        | 30%        | 50%        | 40%        | 50%        | 42%          | 41%              |
| Not sure              | 3%           | 4%         | 6%         | 2%         | 2%         | 3%         | 8%         | 1%         | 2%         | 5%         | 5%         | 2%           | 2%               |
| Totals (Unweighted N) | 100% (1,000) | 100% (144) | 100% (379) | 100% (338) | 100% (139) | 100% (765) | 100% (132) | 100% (103) | 100% (479) | 100% (521) | 100% (333) | 100% (333)   | 100% (334)       |

|                       | Party ID     |            |            |            | Ideology   |            |            | Region     |            |            |            | Family Income |            |            |
|-----------------------|--------------|------------|------------|------------|------------|------------|------------|------------|------------|------------|------------|---------------|------------|------------|
|                       | Total        | Dem        | Rep        | Ind        | Lib        | Mod        | Con        | North-east | Mid-west   | South      | West       | Under 40      | 40-100     | 100+       |
| Strongly approve      | 14%          | 32%        | 1%         | 5%         | 25%        | 15%        | 5%         | 9%         | 14%        | 14%        | 16%        | 18%           | 12%        | 11%        |
| Somewhat approve      | 26%          | 44%        | 6%         | 24%        | 51%        | 31%        | 6%         | 28%        | 26%        | 24%        | 26%        | 30%           | 22%        | 26%        |
| Somewhat disapprove   | 13%          | 13%        | 11%        | 15%        | 12%        | 17%        | 9%         | 12%        | 15%        | 11%        | 13%        | 9%            | 17%        | 17%        |
| Strongly disapprove   | 45%          | 9%         | 81%        | 49%        | 10%        | 32%        | 79%        | 46%        | 39%        | 48%        | 42%        | 37%           | 48%        | 44%        |
| Not sure              | 3%           | 3%         | 0%         | 6%         | 3%         | 5%         | 2%         | 4%         | 6%         | 2%         | 2%         | 6%            | 2%         | 1%         |
| Totals (Unweighted N) | 100% (1,000) | 100% (381) | 100% (274) | 100% (295) | 100% (269) | 100% (352) | 100% (349) | 100% (168) | 100% (203) | 100% (349) | 100% (280) | 100% (303)    | 100% (421) | 100% (102) |

**3. Approval of U.S. Congress – Historical**

Overall, do you approve or disapprove of the way that the United States Congress is handling its job?

|                              | All Adults    |                  |                  |                  |         |                     |                     |          |
|------------------------------|---------------|------------------|------------------|------------------|---------|---------------------|---------------------|----------|
|                              | Total Approve | Total Disapprove | Strongly Approve | Somewhat Approve | Neutral | Somewhat Disapprove | Strongly Disapprove | Not Sure |
| December 14-16, 2013         | 6%            | 73%              | 1%               | 5%               | 16%     | 24%                 | 49%                 | 5%       |
| December 7-9, 2013           | 7%            | 73%              | 1%               | 6%               | 15%     | 21%                 | 52%                 | 6%       |
| November 30-December 2, 2013 | 6%            | 73%              | 1%               | 5%               | 14%     | 21%                 | 52%                 | 7%       |
| November 23-25, 2013         | 6%            | 72%              | 1%               | 5%               | 15%     | 22%                 | 50%                 | 7%       |
| November 16-18, 2013         | 9%            | 69%              | 2%               | 7%               | 14%     | 21%                 | 48%                 | 9%       |
| November 9-11, 2013          | 7%            | 67%              | 2%               | 5%               | 18%     | 18%                 | 49%                 | 8%       |
| November 2-4, 2013           | 7%            | 71%              | 1%               | 6%               | 12%     | 20%                 | 51%                 | 10%      |
| October 26-28, 2013          | 8%            | 70%              | 2%               | 6%               | 13%     | 20%                 | 50%                 | 9%       |
| October 19-21, 2013          | 7%            | 72%              | 1%               | 6%               | 12%     | 24%                 | 48%                 | 8%       |
| October 12-14, 2013          | 7%            | 74%              | 1%               | 6%               | 14%     | 20%                 | 54%                 | 5%       |
| One Year Ago                 | 8%            | 67%              | 1%               | 7%               | 16%     | 26%                 | 41%                 | 10%      |

### Congress Approval

"Do you approve of the way the U.S. Congress is handling its job?"

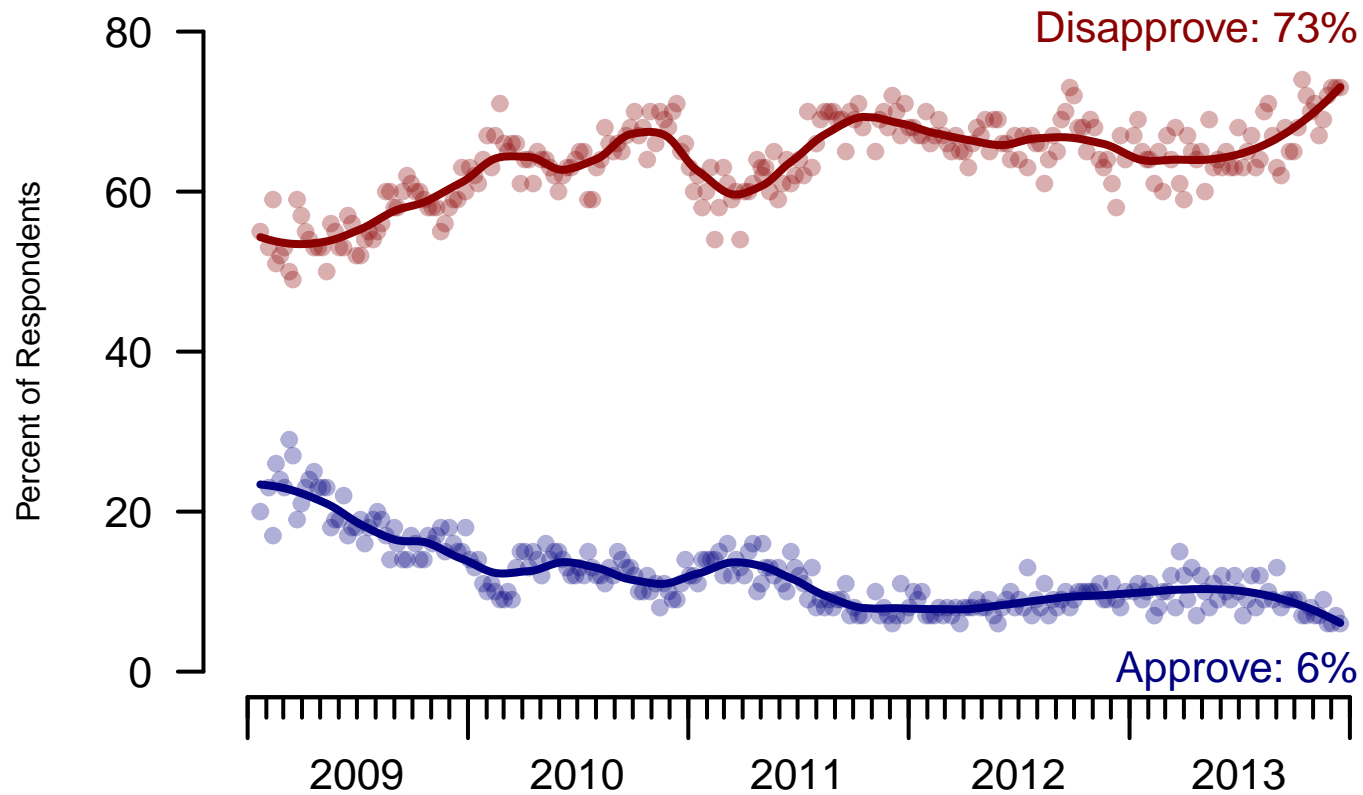


Figure 2: Congress Approval – All Adults

**4. Approval of U.S. Congress – This Week – All Adults**

Overall, do you approve or disapprove of the way that the United States Congress is handling its job?

|                                | Total      | Age        |            |            |            | Race       |            |            | Gender     |            | Education  |              |                  |
|--------------------------------|------------|------------|------------|------------|------------|------------|------------|------------|------------|------------|------------|--------------|------------------|
|                                |            | 18-29      | 30-44      | 45-64      | 65+        | White      | Black      | Hispanic   | Male       | Female     | HS or less | Some college | College graduate |
| Strongly approve               | 1%         | 3%         | 2%         | 0%         | –          | 1%         | –          | 3%         | 1%         | 1%         | 1%         | 2%           | 1%               |
| Somewhat approve               | 5%         | 7%         | 5%         | 5%         | 3%         | 5%         | 6%         | 8%         | 6%         | 5%         | 8%         | 4%           | 3%               |
| Neither approve nor disapprove | 16%        | 24%        | 19%        | 12%        | 5%         | 11%        | 37%        | 22%        | 11%        | 20%        | 19%        | 15%          | 12%              |
| Somewhat disapprove            | 24%        | 21%        | 23%        | 24%        | 28%        | 25%        | 19%        | 18%        | 25%        | 22%        | 19%        | 25%          | 29%              |
| Strongly disapprove            | 49%        | 39%        | 44%        | 57%        | 60%        | 53%        | 36%        | 42%        | 56%        | 42%        | 48%        | 49%          | 52%              |
| Not sure                       | 5%         | 6%         | 7%         | 3%         | 4%         | 5%         | 3%         | 7%         | 0%         | 9%         | 6%         | 5%           | 3%               |
| Totals (Unweighted N)          | 100% (996) | 100% (142) | 100% (378) | 100% (337) | 100% (139) | 100% (762) | 100% (132) | 100% (102) | 100% (478) | 100% (518) | 100% (332) | 100% (331)   | 100% (333)       |

|                                | Total      | Party ID   |            |            | Ideology   |            |            | Region     |            |            |            | Family Income |            |            |
|--------------------------------|------------|------------|------------|------------|------------|------------|------------|------------|------------|------------|------------|---------------|------------|------------|
|                                |            | Dem        | Rep        | Ind        | Lib        | Mod        | Con        | North-east | Mid-west   | South      | West       | Under 40      | 40-100     | 100+       |
| Strongly approve               | 1%         | 2%         | 1%         | 0%         | 0%         | 2%         | 1%         | 1%         | 1%         | 2%         | 1%         | 2%            | 1%         | 0%         |
| Somewhat approve               | 5%         | 6%         | 7%         | 4%         | 4%         | 5%         | 7%         | 6%         | 3%         | 7%         | 4%         | 6%            | 4%         | 8%         |
| Neither approve nor disapprove | 16%        | 21%        | 14%        | 9%         | 7%         | 23%        | 14%        | 14%        | 18%        | 18%        | 12%        | 23%           | 12%        | 13%        |
| Somewhat disapprove            | 24%        | 20%        | 30%        | 25%        | 25%        | 20%        | 27%        | 26%        | 23%        | 21%        | 26%        | 20%           | 31%        | 15%        |
| Strongly disapprove            | 49%        | 47%        | 43%        | 57%        | 57%        | 47%        | 48%        | 49%        | 50%        | 47%        | 52%        | 44%           | 46%        | 64%        |
| Not sure                       | 5%         | 5%         | 5%         | 4%         | 7%         | 4%         | 3%         | 3%         | 4%         | 6%         | 5%         | 5%            | 6%         | –          |
| Totals (Unweighted N)          | 100% (996) | 100% (378) | 100% (274) | 100% (294) | 100% (267) | 100% (350) | 100% (349) | 100% (166) | 100% (203) | 100% (347) | 100% (280) | 100% (300)    | 100% (421) | 100% (102) |

**5. Direction of country – Historical**

Would you say things in this country today are...

|                              | All Adults      |             |          |
|------------------------------|-----------------|-------------|----------|
|                              | Right Direction | Wrong Track | Not Sure |
| December 14-16, 2013         | 25%             | 60%         | 15%      |
| December 7-9, 2013           | 27%             | 60%         | 13%      |
| November 30-December 2, 2013 | 24%             | 62%         | 13%      |
| November 23-25, 2013         | 24%             | 66%         | 10%      |
| November 16-18, 2013         | 22%             | 62%         | 16%      |
| November 9-11, 2013          | 24%             | 62%         | 15%      |
| November 2-4, 2013           | 21%             | 65%         | 14%      |
| October 26-28, 2013          | 24%             | 61%         | 14%      |
| October 19-21, 2013          | 22%             | 66%         | 13%      |
| October 12-14, 2013          | 15%             | 74%         | 12%      |
| One Year Ago                 | 31%             | 53%         | 16%      |



## Direction of Country

"Would you say things in this country today are generally headed in the right direction or off on the wrong track?"

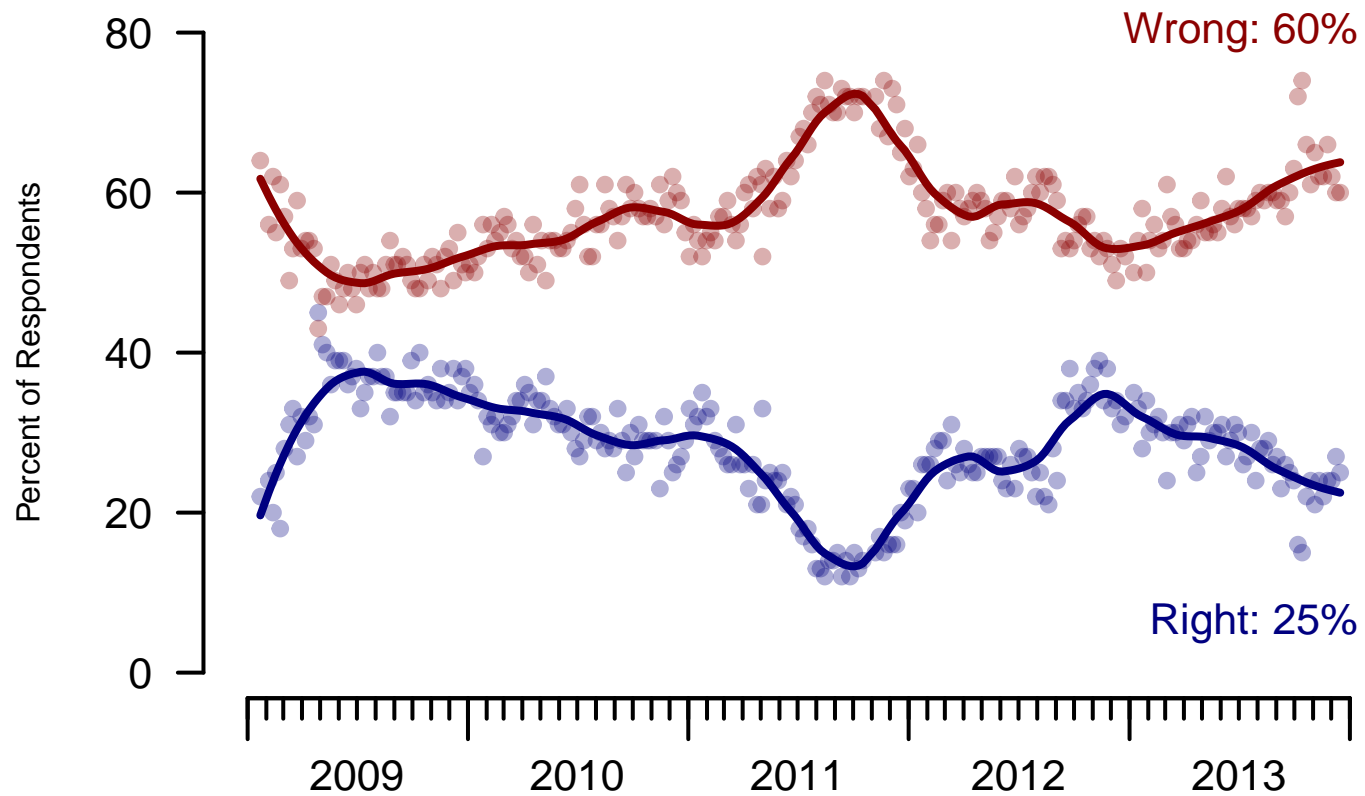


Figure 3: Direction of Country – All Adults

**6. Direction of Country – This Week – All Adults**

Would you say things in this country today are...

|   | Total      | Age        |            |            |            | Race       |            |            | Gender     |            | Education  |              |                  |
|---|------------|------------|------------|------------|------------|------------|------------|------------|------------|------------|------------|--------------|------------------|
|   |            | 18-29      | 30-44      | 45-64      | 65+        | White      | Black      | Hispanic   | Male       | Female     | HS or less | Some college | College graduate |
| Generally headed in the right direction | 25%        | 25%        | 27%        | 24%        | 24%        | 19%        | 48%        | 36%        | 25%        | 25%        | 25%        | 22%          | 28%              |
| Off on the wrong track                  | 60%        | 54%        | 58%        | 65%        | 63%        | 68%        | 27%        | 50%        | 62%        | 58%        | 64%        | 59%          | 56%              |
| Not sure                                | 15%        | 21%        | 15%        | 11%        | 13%        | 13%        | 26%        | 14%        | 13%        | 16%        | 11%        | 19%          | 15%              |
| Totals (Unweighted N)                   | 100% (999) | 100% (144) | 100% (379) | 100% (337) | 100% (139) | 100% (764) | 100% (132) | 100% (103) | 100% (478) | 100% (521) | 100% (333) | 100% (333)   | 100% (333)       |

|   | Total      | Party ID   |            |            | Ideology   |            |            | Region     |            |            |            | Family Income |            |            |
|---|------------|------------|------------|------------|------------|------------|------------|------------|------------|------------|------------|---------------|------------|------------|
|   |            | Dem        | Rep        | Ind        | Lib        | Mod        | Con        | North-east | Mid-west   | South      | West       | Under 40      | 40-100     | 100+       |
| Generally headed in the right direction | 25%        | 52%        | 6%         | 14%        | 43%        | 30%        | 10%        | 21%        | 23%        | 24%        | 32%        | 29%           | 22%        | 31%        |
| Off on the wrong track                  | 60%        | 30%        | 85%        | 69%        | 37%        | 49%        | 86%        | 62%        | 57%        | 63%        | 57%        | 55%           | 63%        | 62%        |
| Not sure                                | 15%        | 18%        | 8%         | 16%        | 20%        | 21%        | 5%         | 17%        | 19%        | 13%        | 12%        | 16%           | 15%        | 8%         |
| Totals (Unweighted N)                   | 100% (999) | 100% (381) | 100% (274) | 100% (294) | 100% (269) | 100% (352) | 100% (348) | 100% (168) | 100% (203) | 100% (348) | 100% (280) | 100% (303)    | 100% (420) | 100% (102) |

**The Economist/YouGov Poll**  
December 14-16, 2013



|                              |   |
|------------------------------|---|
| <b>Sponsorship</b>           | <i>The Economist</i>  |
| <b>Fieldwork</b>             | YouGov  |
| <b>Interviewing Dates</b>    | December 14-16, 2013  |
| <b>Target population</b>     | U.S. citizens, aged 18 and over.  |
| <b>Sampling method</b>       | Respondents were selected from YouGov's opt-in Internet panel using sample matching. A random sample (stratified by age, gender, race, education, and region) was selected from the 2010 American Community Study. Religion, political interest, minor party identification, and non-placement on an ideology scale, were imputed from the 2008 Pew Religion in American Life Survey. |
| <b>Weighting</b>             | The sample was weighted using propensity scores based on age, gender, race, education, news interest, voter registration, and non-placement on an ideology scale. The weights range from 0.2 to 5.1, with a mean of one and a standard deviation of 0.9.  |
| <b>Number of respondents</b> | 1,000   |
| <b>Margin of error</b>       | ± 4.2% (adjusted for weighting)   |
| <b>Survey mode</b>           | Web-based interviews  |
| <b>Full results</b>          | Available online at<br><a href="http://today.yougov.com/news/categories/economist/">http://today.yougov.com/news/categories/economist/</a> .  |