

Interviewing: January 4-6, 2014  
Sample: 1000 Adults nationwide online  
698 registered voters nationwide online



806 D Street, SE  
Washington, DC 20003

Contact:  
Thomas Riehle  
Ph: (202) 544-2550

# *The Economist/YouGov* Poll

## Weekly Tracking

For immediate release

**1. Approval of Obama as President – Historical**

Do you approve or disapprove of the way Barack Obama is handling his job as President?

	All Adults						
	Total Approve	Total Disapprove	Strongly Approve	Somewhat Approve	Somewhat Disapprove	Strongly Disapprove	Not Sure
January 4-6, 2014	43%	54%	15%	28%	14%	40%	3%
December 28-30, 2013	40%	56%	14%	26%	15%	41%	4%
December 21-23, 2013	42%	55%	16%	26%	11%	44%	2%
December 14-16, 2013	40%	58%	14%	26%	13%	45%	3%
December 7-9, 2013	41%	56%	16%	25%	11%	45%	3%
November 30-December 2, 2013	39%	57%	15%	24%	14%	43%	3%
November 23-25, 2013	37%	58%	15%	22%	12%	46%	4%
November 16-18, 2013	41%	50%	13%	28%	12%	38%	8%
November 9-11, 2013	40%	53%	14%	26%	13%	40%	6%
November 2-4, 2013	38%	53%	15%	23%	11%	42%	8%
One Year Ago	53%	41%	22%	31%	11%	30%	6%

	Registered Voters						
	Total Approve	Total Disapprove	Strongly Approve	Somewhat Approve	Somewhat Disapprove	Strongly Disapprove	Not Sure
January 4-6, 2014	42%	56%	16%	26%	12%	44%	2%
December 28-30, 2013	40%	57%	14%	26%	10%	47%	2%
December 21-23, 2013	42%	55%	16%	26%	11%	44%	2%
December 14-16, 2013	38%	58%	14%	24%	12%	46%	3%
December 7-9, 2013	43%	54%	16%	27%	10%	44%	3%
November 30-December 2, 2013	42%	56%	16%	26%	13%	43%	2%
November 23-25, 2013	39%	58%	16%	23%	11%	47%	4%
November 16-18, 2013	42%	56%	16%	26%	12%	44%	2%
November 9-11, 2013	44%	54%	16%	28%	12%	42%	2%
November 2-4, 2013	41%	53%	18%	23%	8%	45%	5%
One Year Ago	50%	48%	24%	26%	11%	37%	2%

## Obama Approval

"Do you approve or disapprove of the way Barack Obama is handling his job as President?"

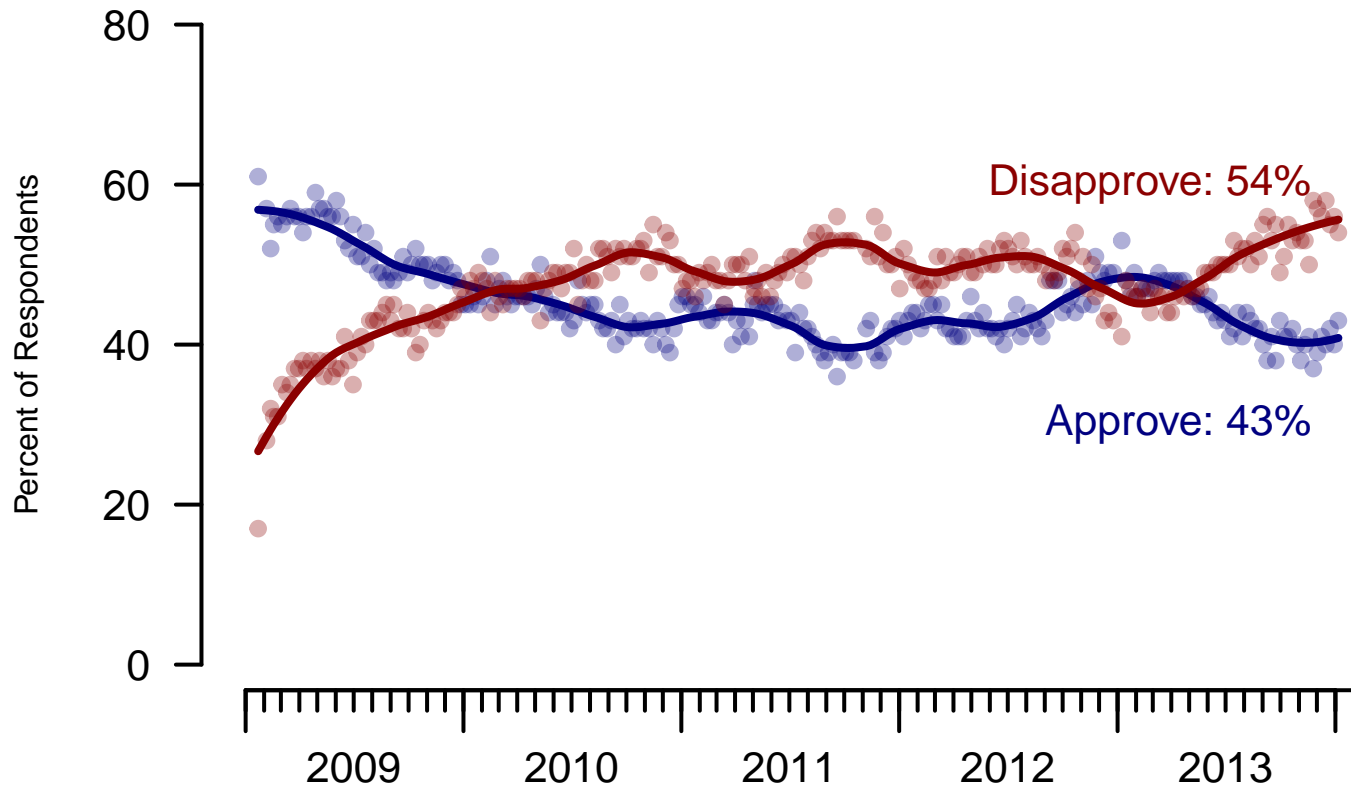


Figure 1: Obama Approval – All Adults

## Obama Approval

"Do you approve or disapprove of the way Barack Obama is handling his job as President?"

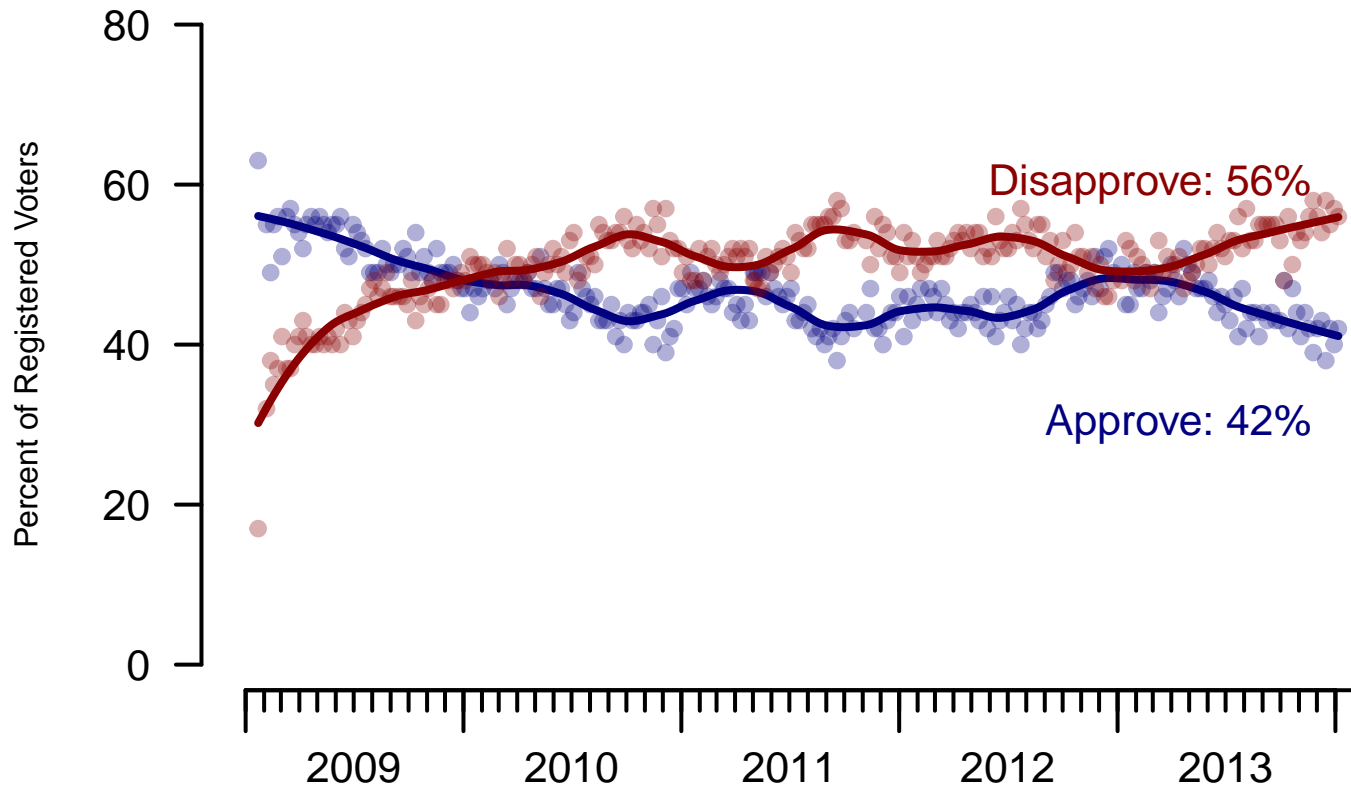


Figure 2: Obama Approval – Registered Voters

**2. Approval of Obama as President – This Week – All Adults**

Do you approve or disapprove of the way Barack Obama is handling his job as President?

	Age					Race			Gender		Education		
	Total	18-29	30-44	45-64	65+	White	Black	Hispanic	Male	Female	HS or less	Some college	College graduate
Strongly approve	15%	15%	13%	14%	22%	8%	46%	20%	13%	16%	19%	14%	11%
Somewhat approve	28%	35%	31%	25%	11%	25%	33%	35%	27%	28%	20%	32%	34%
Somewhat disapprove	14%	17%	15%	13%	10%	15%	3%	22%	15%	13%	18%	14%	8%
Strongly disapprove	40%	28%	35%	47%	54%	49%	9%	22%	42%	38%	39%	38%	44%
Not sure	3%	5%	5%	1%	3%	3%	8%	2%	2%	5%	4%	2%	3%
Totals (Unweighted N)	100% (997)	100% (212)	100% (326)	100% (347)	100% (112)	100% (735)	100% (146)	100% (116)	100% (463)	100% (534)	100% (343)	100% (411)	100% (243)

	Party ID			Ideology			Region				Family Income			
	Total	Dem	Rep	Ind	Lib	Mod	Con	North-east	Mid-west	South	West	Under 40	40-100	100+
Strongly approve	15%	32%	1%	10%	22%	20%	6%	18%	11%	15%	16%	20%	10%	12%
Somewhat approve	28%	48%	8%	21%	50%	31%	10%	26%	29%	28%	26%	29%	26%	32%
Somewhat disapprove	14%	11%	14%	16%	14%	17%	12%	14%	17%	13%	14%	15%	16%	7%
Strongly disapprove	40%	6%	77%	49%	8%	30%	71%	40%	40%	38%	42%	33%	46%	45%
Not sure	3%	4%	—	3%	8%	2%	1%	3%	2%	6%	1%	4%	2%	5%
Totals (Unweighted N)	100% (997)	100% (367)	100% (227)	100% (307)	100% (250)	100% (361)	100% (318)	100% (142)	100% (168)	100% (373)	100% (314)	100% (402)	100% (340)	100% (94)

**3. Approval of U.S. Congress – Historical**

Overall, do you approve or disapprove of the way that the United States Congress is handling its job?

All Adults								
	<b>Total Approve</b>	<b>Total Disapprove</b>	Strongly Approve	Somewhat Approve	Neutral	Somewhat Disapprove	Strongly Disapprove	Not Sure
January 4-6, 2014	8%	69%	1%	7%	15%	22%	47%	7%
December 28-30, 2013	9%	70%	2%	7%	16%	26%	44%	6%
December 21-23, 2013	12%	70%	3%	9%	14%	26%	44%	4%
December 14-16, 2013	6%	73%	1%	5%	16%	24%	49%	5%
December 7-9, 2013	7%	73%	1%	6%	15%	21%	52%	6%
November 30-December 2, 2013	6%	73%	1%	5%	14%	21%	52%	7%
November 23-25, 2013	6%	72%	1%	5%	15%	22%	50%	7%
November 16-18, 2013	9%	69%	2%	7%	14%	21%	48%	9%
November 9-11, 2013	7%	67%	2%	5%	18%	18%	49%	8%
November 2-4, 2013	7%	71%	1%	6%	12%	20%	51%	10%
One Year Ago	10%	67%	2%	8%	15%	20%	47%	7%

Registered Voters								
	<b>Total Approve</b>	<b>Total Disapprove</b>	Strongly Approve	Somewhat Approve	Neutral	Somewhat Disapprove	Strongly Disapprove	Not Sure
January 4-6, 2014	7%	77%	1%	6%	13%	24%	53%	3%
December 28-30, 2013	7%	77%	2%	5%	12%	25%	52%	4%
December 21-23, 2013	12%	70%	3%	9%	14%	26%	44%	4%
December 14-16, 2013	6%	75%	1%	5%	14%	24%	51%	4%
December 7-9, 2013	7%	74%	2%	5%	14%	20%	54%	5%
November 30-December 2, 2013	6%	76%	1%	5%	12%	22%	54%	5%
November 23-25, 2013	7%	74%	1%	6%	13%	22%	52%	6%
November 16-18, 2013	6%	77%	1%	5%	13%	22%	55%	4%
November 9-11, 2013	7%	77%	2%	5%	13%	22%	55%	3%
November 2-4, 2013	8%	73%	2%	6%	13%	21%	52%	6%
One Year Ago	7%	76%	2%	5%	13%	20%	56%	4%

### Congress Approval

"Do you approve of the way the  
U.S. Congress is handling its job?"

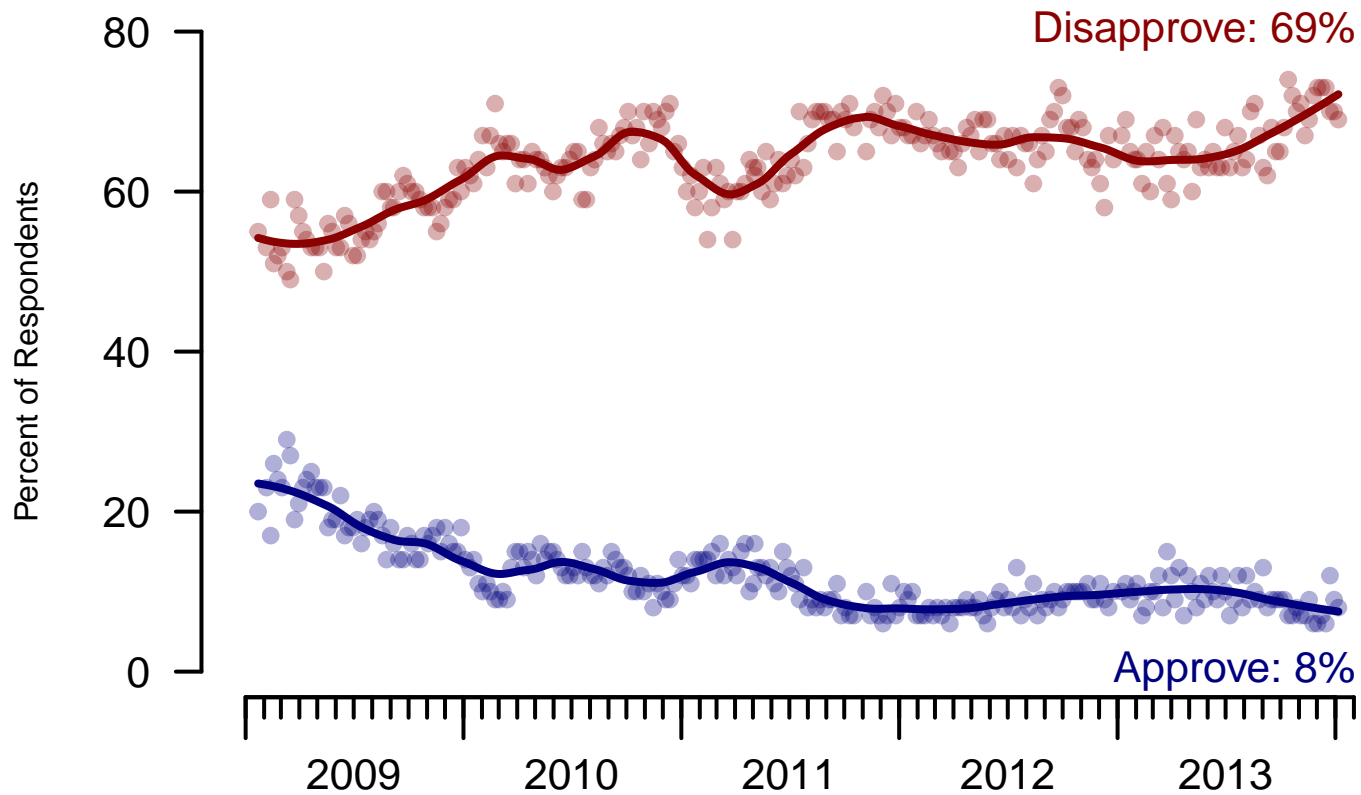


Figure 3: Congress Approval – All Adults

### Congress Approval

"Do you approve of the way the  
U.S. Congress is handling its job?"

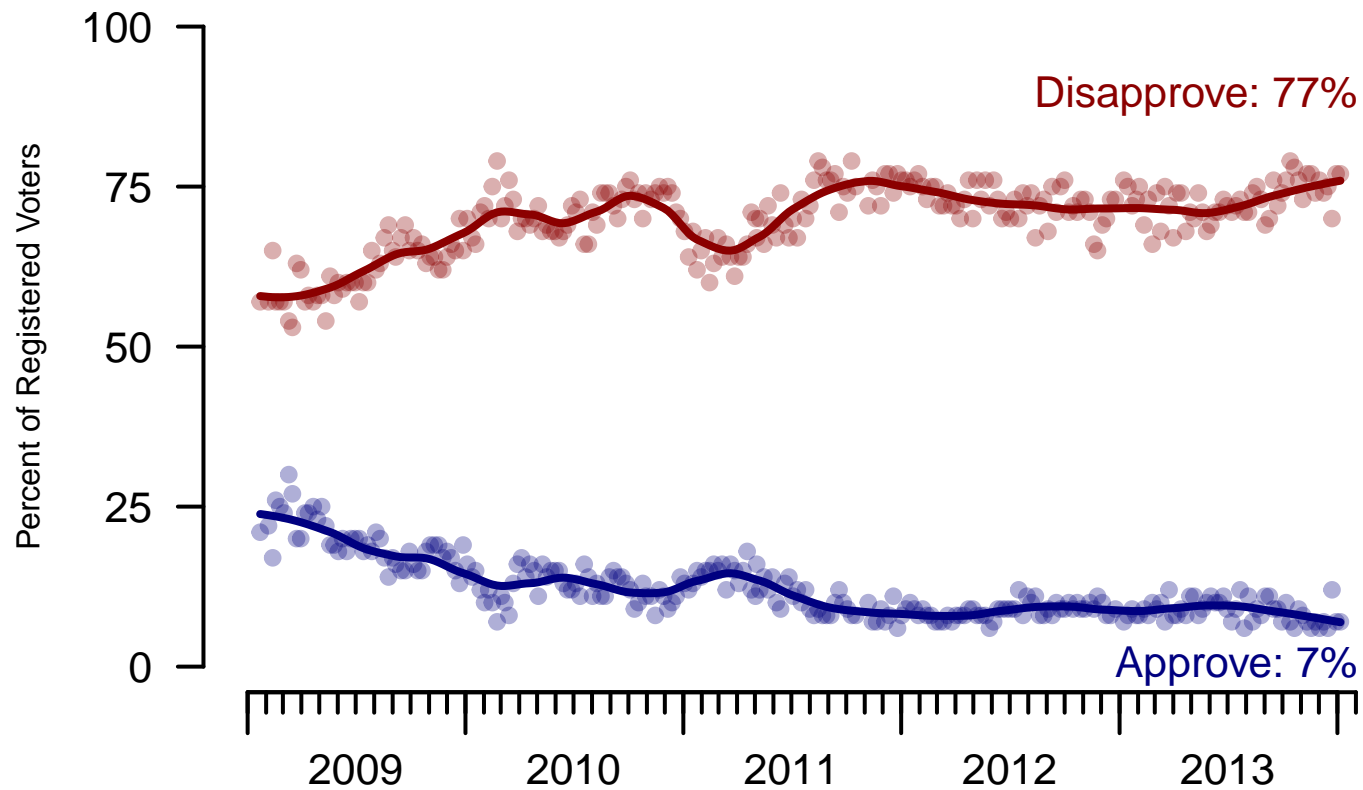


Figure 4: Congress Approval – Registered Voters



**4. Approval of U.S. Congress – This Week – All Adults**

Overall, do you approve or disapprove of the way that the United States Congress is handling its job?

	Total	Age				Race			Gender		Education		
		18-29	30-44	45-64	65+	White	Black	Hispanic	Male	Female	HS or less	Some college	College graduate
Strongly approve	1%	1%	1%	0%	2%	1%	2%	1%	1%	1%	1%	1%	0%
Somewhat approve	7%	8%	8%	7%	5%	6%	11%	15%	8%	6%	9%	7%	6%
Neither approve nor disapprove	15%	16%	18%	13%	11%	13%	28%	14%	12%	18%	17%	16%	11%
Somewhat disapprove	22%	26%	22%	20%	22%	23%	22%	21%	20%	25%	21%	23%	25%
Strongly disapprove	47%	39%	42%	53%	60%	53%	28%	36%	55%	40%	43%	48%	54%
Not sure	7%	10%	8%	5%	0%	5%	9%	12%	5%	9%	10%	5%	3%
Totals (Unweighted N)	100% (997)	100% (211)	100% (327)	100% (347)	100% (112)	100% (736)	100% (145)	100% (116)	100% (464)	100% (533)	100% (343)	100% (411)	100% (243)

	Total	Party ID			Ideology			Region				Family Income		
		Dem	Rep	Ind	Lib	Mod	Con	North-east	Mid-west	South	West	Under 40	40-100	100+
Strongly approve	1%	1%	1%	0%	1%	0%	1%	1%	0%	1%	1%	1%	1%	1%
Somewhat approve	7%	7%	8%	9%	8%	8%	7%	15%	8%	4%	7%	11%	5%	11%
Neither approve nor disapprove	15%	17%	17%	11%	14%	15%	16%	14%	15%	18%	12%	18%	14%	16%
Somewhat disapprove	22%	20%	26%	22%	19%	21%	26%	22%	21%	24%	21%	21%	24%	25%
Strongly disapprove	47%	48%	41%	53%	50%	51%	44%	43%	48%	46%	52%	41%	50%	42%
Not sure	7%	7%	6%	5%	8%	5%	6%	5%	8%	7%	7%	8%	6%	5%
Totals (Unweighted N)	100% (997)	100% (366)	100% (227)	100% (307)	100% (250)	100% (361)	100% (318)	100% (142)	100% (167)	100% (374)	100% (314)	100% (401)	100% (341)	100% (94)

**5. Direction of country – Historical**

Would you say things in this country today are...

	All Adults		
	Right Direction	Wrong Track	Not Sure
January 4-6, 2014	27%	59%	14%
December 28-30, 2013	26%	58%	15%
December 21-23, 2013	29%	61%	11%
December 14-16, 2013	25%	60%	15%
December 7-9, 2013	27%	60%	13%
November 30-December 2, 2013	24%	62%	13%
November 23-25, 2013	24%	66%	10%
November 16-18, 2013	22%	62%	16%
November 9-11, 2013	24%	62%	15%
November 2-4, 2013	21%	65%	14%
One Year Ago	35%	50%	15%

	Registered Voters		
	Right Direction	Wrong Track	Not Sure
January 4-6, 2014	28%	60%	12%
December 28-30, 2013	26%	60%	14%
December 21-23, 2013	29%	60%	11%
December 14-16, 2013	24%	61%	15%
December 7-9, 2013	28%	60%	12%
November 30-December 2, 2013	27%	62%	12%
November 23-25, 2013	25%	65%	10%
November 16-18, 2013	26%	63%	11%
November 9-11, 2013	25%	65%	10%
November 2-4, 2013	23%	63%	14%
One Year Ago	38%	52%	10%

## Direction of Country

"Would you say things in this country today are generally headed in the right direction or off on the wrong track?"

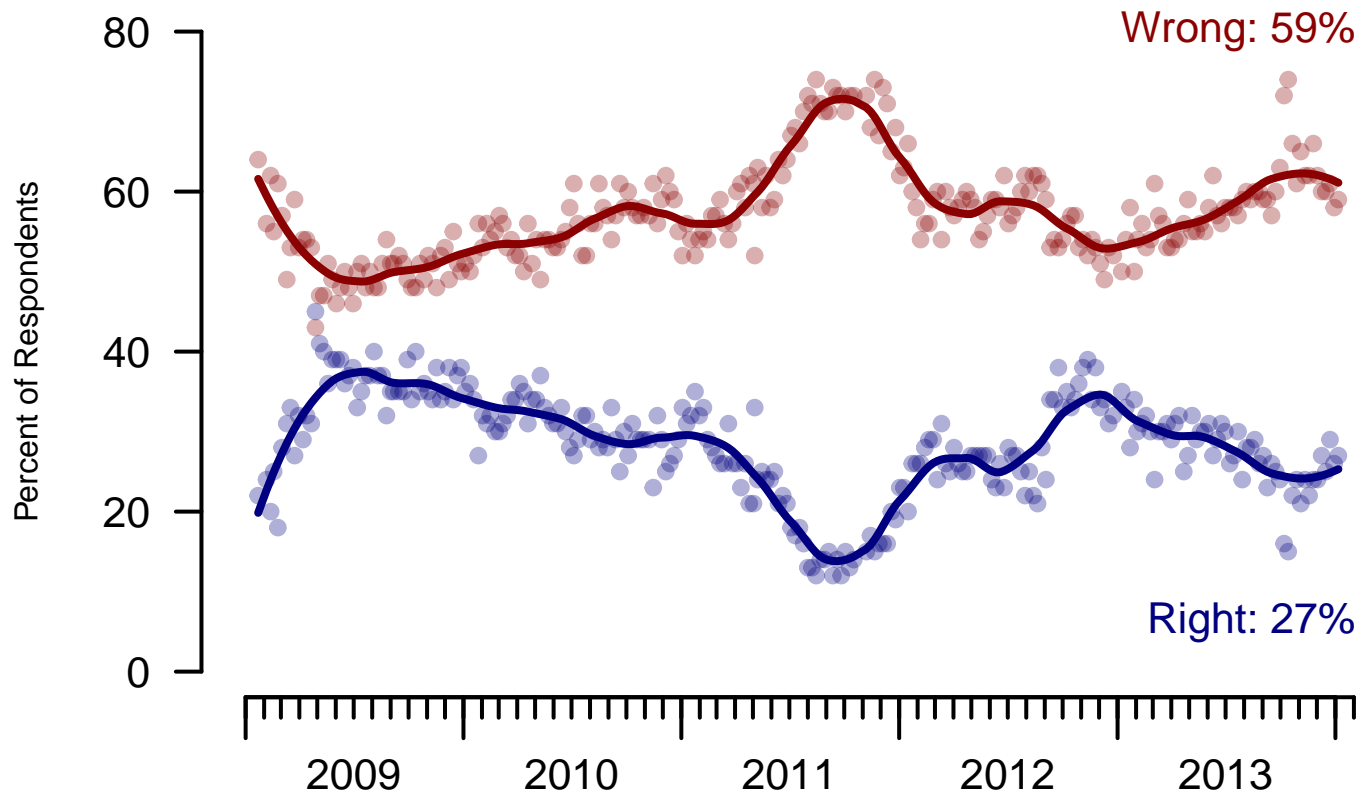


Figure 5: Direction of Country – All Adults

## Direction of Country

"Would you say things in this country today are generally headed in the right direction or off on the wrong track?"

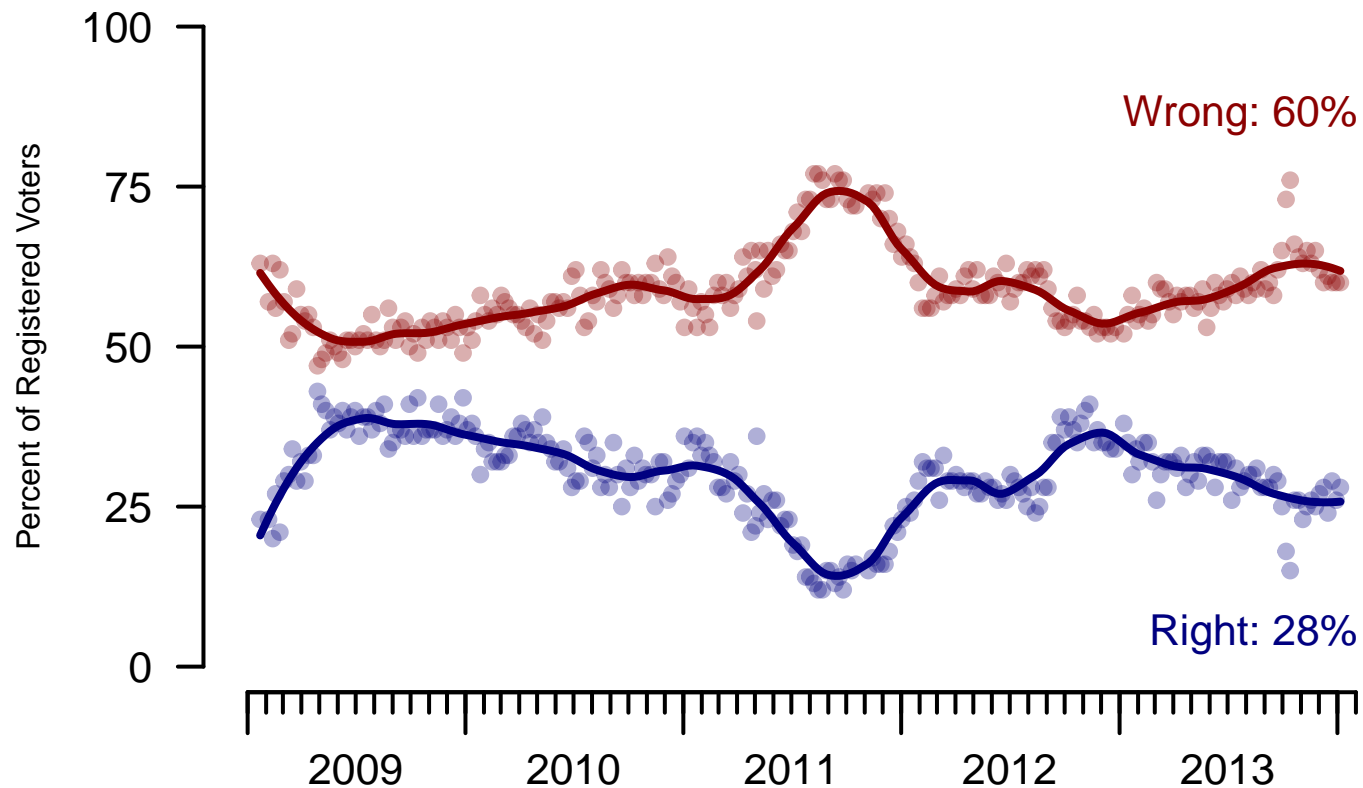


Figure 6: Direction of Country – Registered Voters

**6. Direction of Country – This Week – All Adults**

Would you say things in this country today are...

	Total	Age				Race			Gender		Education		
		18-29	30-44	45-64	65+	White	Black	Hispanic	Male	Female	HS or less	Some college	College graduate
Generally headed in the right direction	27%	31%	25%	24%	27%	21%	46%	40%	28%	26%	24%	29%	28%
Off on the wrong track	59%	50%	60%	64%	61%	67%	29%	45%	62%	56%	59%	59%	60%
Not sure	14%	19%	15%	12%	12%	12%	25%	15%	10%	19%	17%	13%	12%
Totals (Unweighted N)	100% (997)	100% (213)	100% (326)	100% (346)	100% (112)	100% (736)	100% (146)	100% (115)	100% (462)	100% (535)	100% (343)	100% (412)	100% (242)

	Total	Party ID			Ideology			Region				Family Income		
		Dem	Rep	Ind	Lib	Mod	Con	North-east	Mid-west	South	West	Under 40	40-100	100+
Generally headed in the right direction	27%	50%	7%	20%	49%	30%	10%	31%	24%	24%	31%	30%	22%	29%
Off on the wrong track	59%	29%	88%	68%	26%	55%	84%	54%	62%	60%	57%	55%	66%	57%
Not sure	14%	21%	5%	13%	25%	15%	6%	15%	13%	16%	12%	15%	12%	14%
Totals (Unweighted N)	100% (997)	100% (368)	100% (228)	100% (304)	100% (249)	100% (361)	100% (318)	100% (141)	100% (168)	100% (375)	100% (313)	100% (400)	100% (341)	100% (94)

**The Economist/YouGov Poll**  
January 4-6, 2014



<b>Sponsorship</b>	<i>The Economist</i>
<b>Fieldwork</b>	YouGov
<b>Interviewing Dates</b>	January 4-6, 2014
<b>Target population</b>	U.S. citizens, aged 18 and over.
<b>Sampling method</b>	Respondents were selected from YouGov's opt-in Internet panel using sample matching. A random sample (stratified by age, gender, race, education, and region) was selected from the 2010 American Community Study. Voter registration was imputed from the November 2010 Current Population Survey Registration and Voting Supplement. Religion, political interest, minor party identification, and non-placement on an ideology scale, were imputed from the 2008 Pew Religion in American Life Survey.
<b>Weighting</b>	The sample was weighted using propensity scores based on age, gender, race, education, news interest, voter registration, and non-placement on an ideology scale. The weights range from 0.18 to 4.03, with a mean of one and a standard deviation of 0.8.
<b>Number of respondents</b>	1,000
<b>Margin of error</b>	± 3.9% (adjusted for weighting)
<b>Margin of error (Registered Voters)</b>	± 4.5% (adjusted for weighting)
<b>Survey mode</b>	Web-based interviews
<b>Full results</b>	Available online at <a href="http://today.yougov.com/news/categories/economist/">http://today.yougov.com/news/categories/economist/</a> .