

Interviewing: May 11-13, 2013
Sample: 1000 Adults nationwide online
661 registered voters nationwide online



806 D Street, SE
Washington, DC 20003

Contact:
Thomas Riehle
Ph: (202) 544-2550

The Economist/YouGov Poll

Weekly Tracking

For immediate release

1. Approval of Obama as President – Historical

Do you approve or disapprove of the way Barack Obama is handling his job as President?

All Adults							
	Total Approve	Total Disapprove	Strongly Approve	Somewhat Approve	Somewhat Disapprove	Strongly Disapprove	Not Sure
May 11-13, 2013	46%	47%	21%	25%	15%	32%	6%
May 4-6, 2013	46%	46%	20%	26%	12%	34%	7%
April 27-29, 2013	47%	47%	20%	27%	11%	36%	5%
April 20-22, 2013	48%	46%	19%	29%	15%	31%	5%
April 12-14, 2013	48%	47%	19%	29%	14%	33%	6%
April 5-7, 2013	48%	46%	20%	28%	14%	32%	6%
March 30-April 1, 2013	48%	44%	20%	28%	10%	34%	8%
March 23-25, 2013	48%	44%	20%	28%	11%	33%	7%
March 16-18, 2013	48%	46%	20%	28%	10%	36%	6%
March 9-11, 2013	49%	46%	22%	27%	9%	37%	5%
One Year Ago	42%	51%	16%	26%	13%	38%	7%

Registered Voters							
	Total Approve	Total Disapprove	Strongly Approve	Somewhat Approve	Somewhat Disapprove	Strongly Disapprove	Not Sure
May 11-13, 2013	47%	50%	24%	23%	12%	38%	3%
May 4-6, 2013	49%	49%	22%	27%	9%	40%	3%
April 27-29, 2013	50%	48%	22%	28%	10%	38%	2%
April 20-22, 2013	52%	47%	24%	28%	12%	35%	3%
April 12-14, 2013	46%	51%	20%	26%	13%	38%	2%
April 5-7, 2013	48%	50%	21%	27%	11%	39%	2%
March 30-April 1, 2013	50%	49%	23%	27%	10%	39%	2%
March 23-25, 2013	47%	51%	22%	25%	9%	42%	3%
March 16-18, 2013	46%	49%	19%	27%	8%	41%	3%
March 9-11, 2013	44%	53%	22%	22%	10%	43%	3%
One Year Ago	43%	54%	17%	26%	12%	42%	3%

Obama Approval

"Do you approve or disapprove of the way Barack Obama is handling his job as President?"

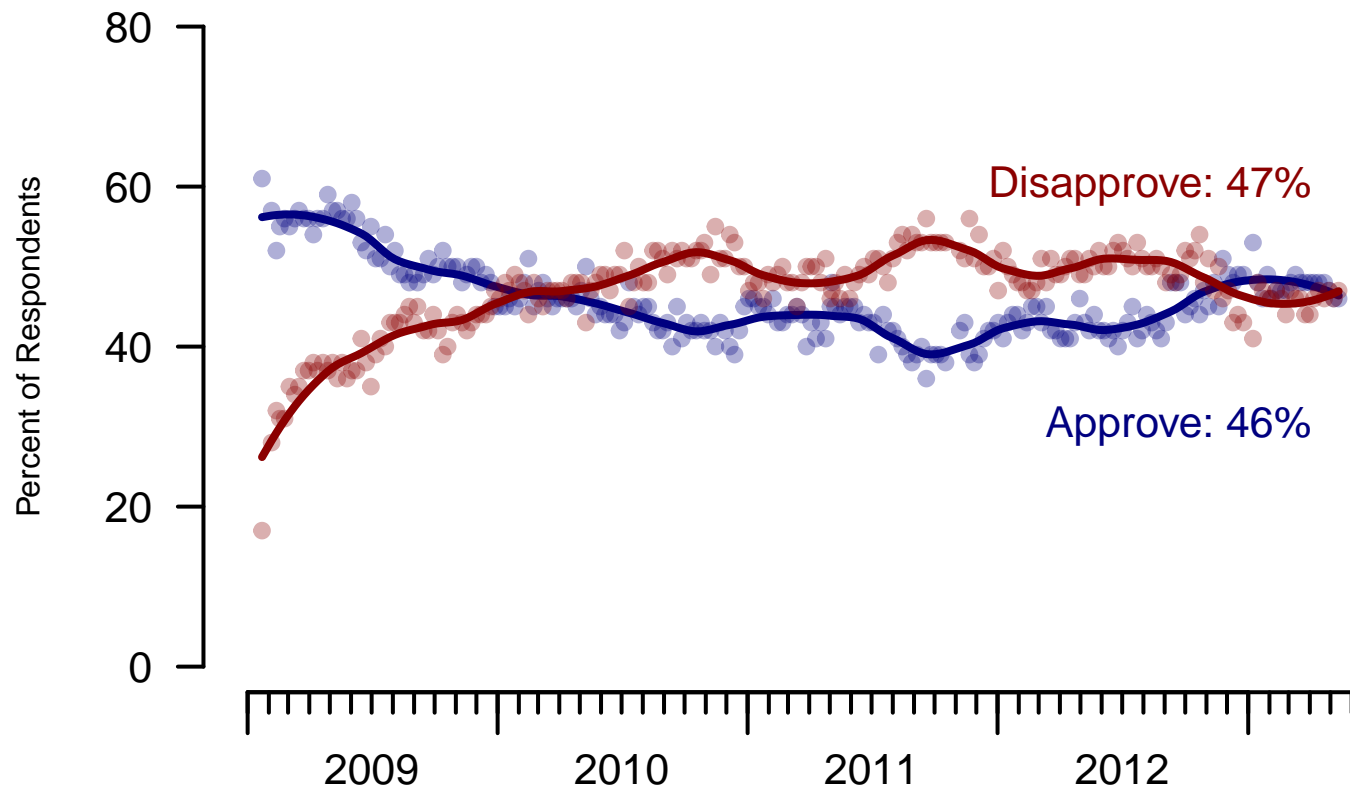


Figure 1: Obama Approval – All Adults

Obama Approval

"Do you approve or disapprove of the way Barack Obama is handling his job as President?"

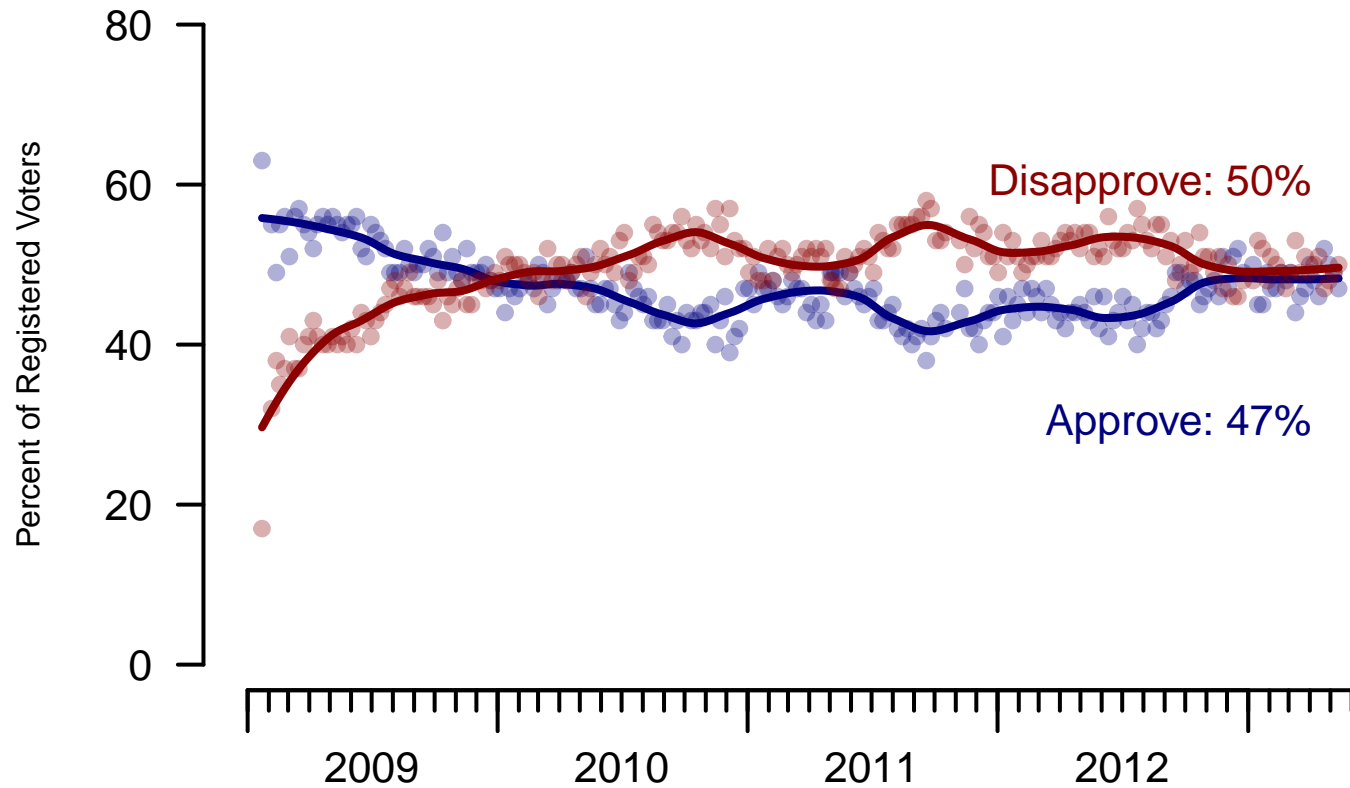


Figure 2: Obama Approval – Registered Voters

2. Approval of Obama as President – This Week – All Adults

Do you approve or disapprove of the way Barack Obama is handling his job as President?

	Age					Race			Gender		Education		
	Total	18-29	30-44	45-64	65+	White	Black	Hispanic	Male	Female	HS or less	Some college	College graduate
Strongly approve	21%	21%	15%	25%	27%	16%	53%	13%	21%	22%	18%	20%	30%
Somewhat approve	25%	25%	30%	21%	23%	23%	18%	44%	25%	25%	25%	22%	29%
Somewhat disapprove	15%	20%	15%	14%	9%	17%	10%	9%	15%	16%	15%	15%	16%
Strongly disapprove	32%	21%	32%	35%	42%	38%	7%	26%	36%	28%	34%	36%	23%
Not sure	6%	12%	7%	5%	—	5%	12%	8%	4%	9%	8%	7%	2%
Totals (Unweighted N)	100% (1,000)	100% (189)	100% (315)	100% (369)	100% (127)	100% (759)	100% (135)	100% (106)	100% (477)	100% (523)	100% (342)	100% (355)	100% (303)

	Party ID			Ideology			Region				Family Income			
	Total	Dem	Rep	Ind	Lib	Mod	Con	North-east	Mid-west	South	West	Under 40	40-100	100+
Strongly approve	21%	45%	2%	13%	41%	26%	6%	31%	11%	23%	22%	20%	23%	24%
Somewhat approve	25%	34%	8%	26%	41%	31%	9%	32%	22%	23%	26%	26%	24%	29%
Somewhat disapprove	15%	10%	19%	17%	9%	18%	18%	7%	20%	14%	17%	17%	10%	14%
Strongly disapprove	32%	7%	69%	37%	3%	21%	65%	23%	41%	32%	29%	31%	37%	32%
Not sure	6%	4%	2%	7%	6%	5%	2%	8%	5%	7%	6%	6%	6%	1%
Totals (Unweighted N)	100% (1,000)	100% (399)	100% (247)	100% (298)	100% (278)	100% (373)	100% (317)	100% (182)	100% (200)	100% (366)	100% (252)	100% (355)	100% (388)	100% (99)

3. Approval of U.S. Congress – Historical

Overall, do you approve or disapprove of the way that the United States Congress is handling its job?

All Adults

	Total Approve	Total Disapprove	Strongly Approve	Somewhat Approve	Neutral	Somewhat Disapprove	Strongly Disapprove	Not Sure
May 11-13, 2013	8%	69%	1%	7%	15%	23%	46%	7%
May 4-6, 2013	10%	60%	2%	8%	20%	20%	40%	9%
April 27-29, 2013	12%	65%	2%	10%	13%	19%	46%	10%
April 20-22, 2013	7%	64%	1%	6%	17%	21%	43%	12%
April 12-14, 2013	13%	65%	4%	9%	15%	22%	43%	9%
April 5-7, 2013	9%	67%	1%	8%	15%	24%	43%	8%
March 30-April 1, 2013	12%	59%	3%	9%	17%	24%	35%	12%
March 23-25, 2013	15%	61%	2%	13%	15%	22%	39%	9%
March 16-18, 2013	8%	68%	2%	6%	13%	22%	46%	11%
March 9-11, 2013	12%	64%	2%	10%	16%	24%	40%	9%
One Year Ago	9%	65%	2%	7%	18%	23%	42%	7%

Registered Voters

	Total Approve	Total Disapprove	Strongly Approve	Somewhat Approve	Neutral	Somewhat Disapprove	Strongly Disapprove	Not Sure
May 11-13, 2013	8%	74%	1%	7%	12%	25%	49%	5%
May 4-6, 2013	11%	70%	3%	8%	15%	23%	47%	5%
April 27-29, 2013	11%	71%	1%	10%	13%	21%	50%	5%
April 20-22, 2013	8%	68%	1%	7%	16%	21%	47%	7%
April 12-14, 2013	9%	74%	2%	7%	13%	26%	48%	5%
April 5-7, 2013	8%	74%	1%	7%	13%	25%	49%	4%
March 30-April 1, 2013	8%	67%	1%	7%	16%	24%	43%	8%
March 23-25, 2013	12%	72%	2%	10%	11%	24%	48%	6%
March 16-18, 2013	7%	75%	1%	6%	12%	23%	52%	6%
March 9-11, 2013	10%	68%	2%	8%	15%	23%	45%	7%
One Year Ago	8%	73%	1%	7%	15%	25%	48%	4%

Congress Approval

"Do you approve of the way the U.S. Congress is handling its job?"

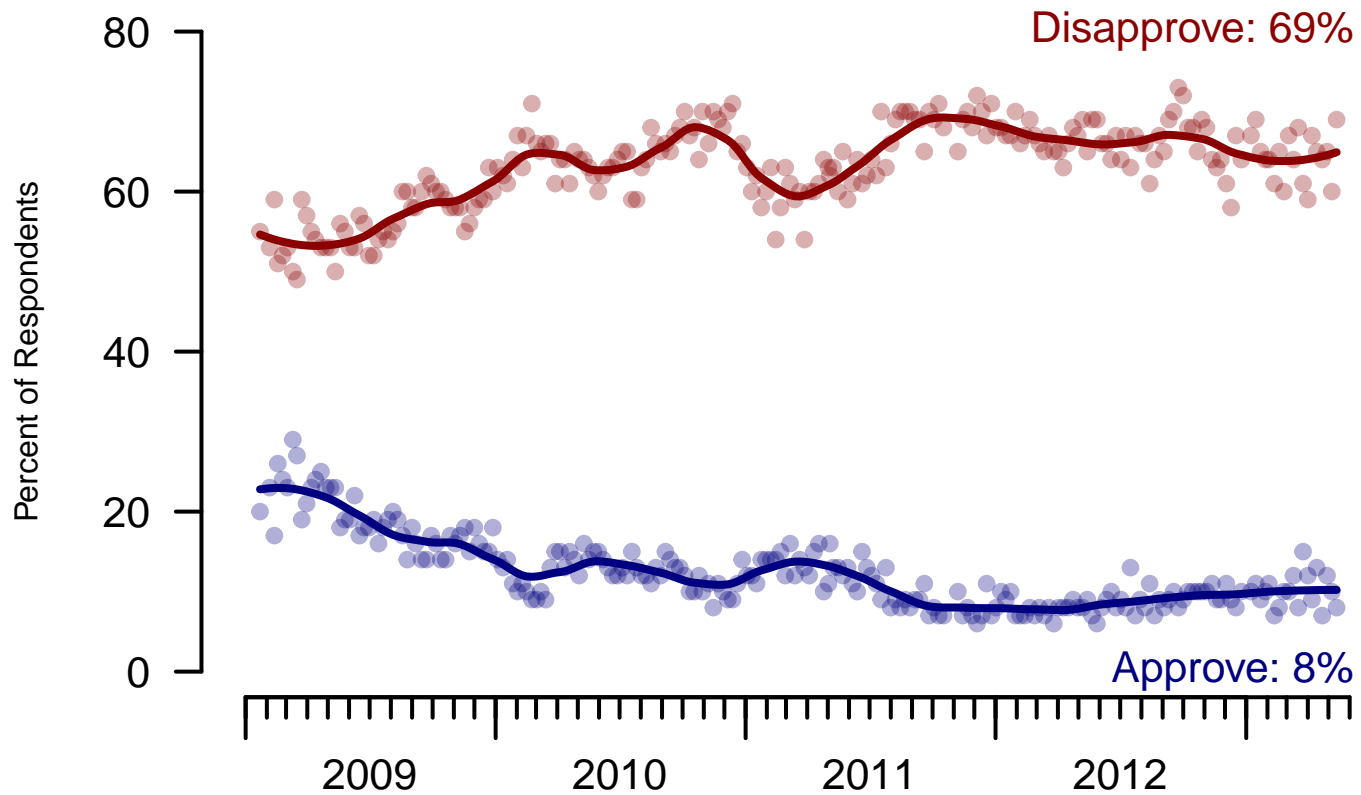


Figure 3: Congress Approval – All Adults

Congress Approval

"Do you approve of the way the U.S. Congress is handling its job?"

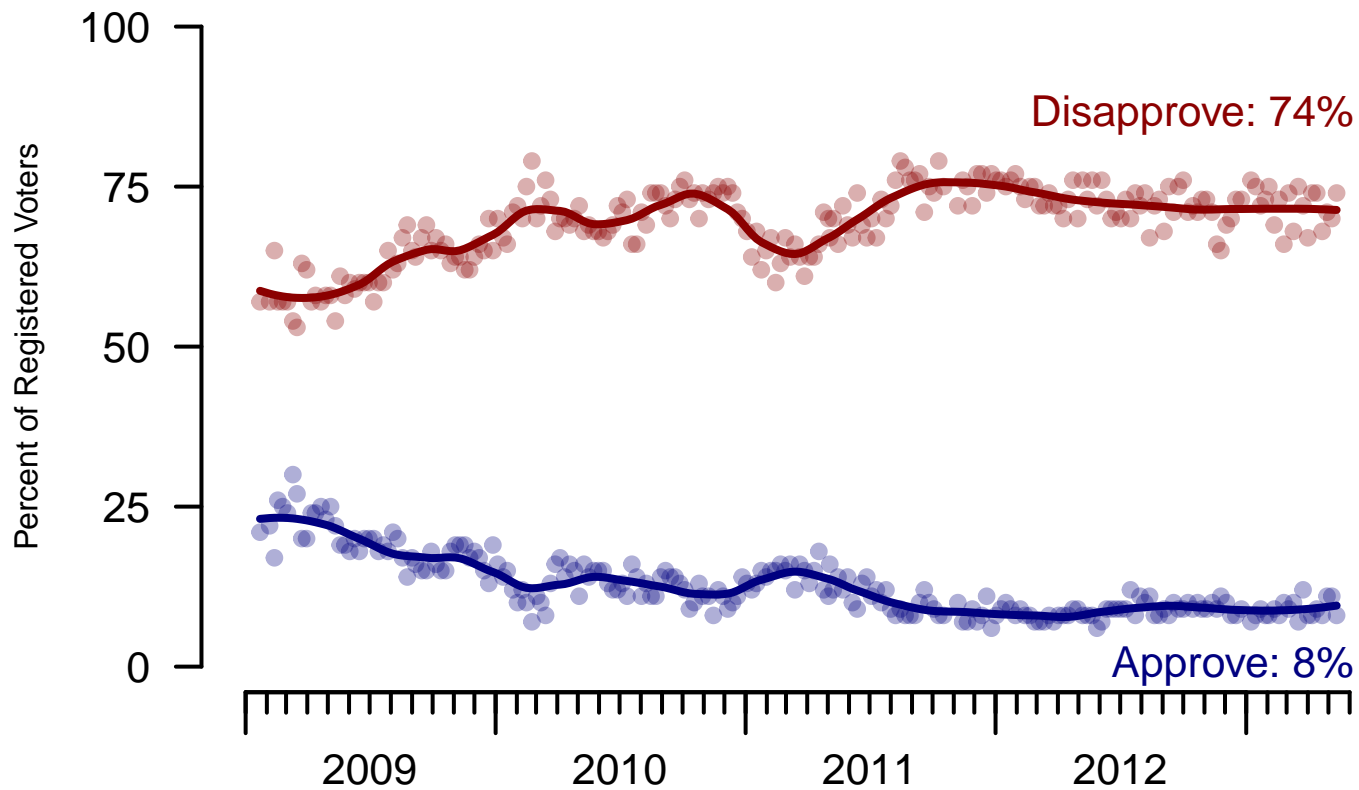


Figure 4: Congress Approval – Registered Voters

4. Approval of U.S. Congress – This Week – All Adults

Overall, do you approve or disapprove of the way that the United States Congress is handling its job?

	Age					Race			Gender		Education		
	Total	18-29	30-44	45-64	65+	White	Black	Hispanic	Male	Female	HS or less	Some college	College graduate
Strongly approve	1%	1%	2%	2%	1%	2%	2%	0%	0%	2%	2%	1%	1%
Somewhat approve	7%	8%	7%	7%	8%	5%	19%	8%	9%	6%	9%	7%	6%
Neither approve nor disapprove	15%	13%	21%	13%	12%	14%	20%	23%	10%	21%	18%	16%	11%
Somewhat disapprove	23%	19%	25%	23%	24%	24%	13%	27%	20%	26%	19%	26%	26%
Strongly disapprove	46%	47%	37%	51%	51%	50%	39%	24%	54%	38%	42%	45%	54%
Not sure	7%	12%	7%	4%	3%	5%	8%	17%	6%	8%	11%	6%	1%
Totals (Unweighted N)	100% (997)	100% (188)	100% (315)	100% (368)	100% (126)	100% (759)	100% (134)	100% (104)	100% (477)	100% (520)	100% (339)	100% (355)	100% (303)

	Party ID			Ideology			Region				Family Income			
	Total	Dem	Rep	Ind	Lib	Mod	Con	North-east	Mid-west	South	West	Under 40	40-100	100+
Strongly approve	1%	3%	1%	1%	4%	0%	1%	1%	1%	2%	1%	2%	1%	—
Somewhat approve	7%	11%	8%	4%	8%	7%	8%	9%	7%	7%	7%	8%	7%	6%
Neither approve nor disapprove	15%	18%	14%	12%	10%	21%	13%	14%	14%	17%	16%	21%	12%	12%
Somewhat disapprove	23%	16%	35%	25%	16%	18%	35%	24%	24%	25%	18%	20%	28%	30%
Strongly disapprove	46%	49%	38%	49%	57%	52%	37%	46%	45%	42%	53%	39%	48%	51%
Not sure	7%	3%	4%	9%	5%	3%	5%	7%	9%	6%	5%	9%	4%	1%
Totals (Unweighted N)	100% (997)	100% (398)	100% (246)	100% (297)	100% (276)	100% (373)	100% (316)	100% (182)	100% (199)	100% (365)	100% (251)	100% (354)	100% (386)	100% (99)

5. Direction of country – Historical

Would you say things in this country today are...

	All Adults		
	Right Track	Wrong Direction	Not Sure
May 11-13, 2013	29%	55%	15%
May 4-6, 2013	32%	55%	13%
April 27-29, 2013	27%	59%	14%
April 20-22, 2013	25%	56%	20%
April 12-14, 2013	32%	54%	14%
April 5-7, 2013	31%	54%	15%
March 30-April 1, 2013	29%	53%	18%
March 23-25, 2013	31%	53%	16%
March 16-18, 2013	30%	56%	14%
March 9-11, 2013	30%	57%	13%
One Year Ago	27%	54%	19%

	Registered Voters		
	Right Track	Wrong Direction	Not Sure
May 11-13, 2013	29%	57%	13%
May 4-6, 2013	32%	56%	12%
April 27-29, 2013	30%	58%	12%
April 20-22, 2013	28%	58%	14%
April 12-14, 2013	33%	57%	10%
April 5-7, 2013	31%	58%	11%
March 30-April 1, 2013	32%	55%	13%
March 23-25, 2013	32%	57%	12%
March 16-18, 2013	32%	59%	9%
March 9-11, 2013	30%	59%	11%
One Year Ago	27%	58%	14%

Direction of Country

"Would you say things in this country today are generally headed in the right direction or off on the wrong track?"

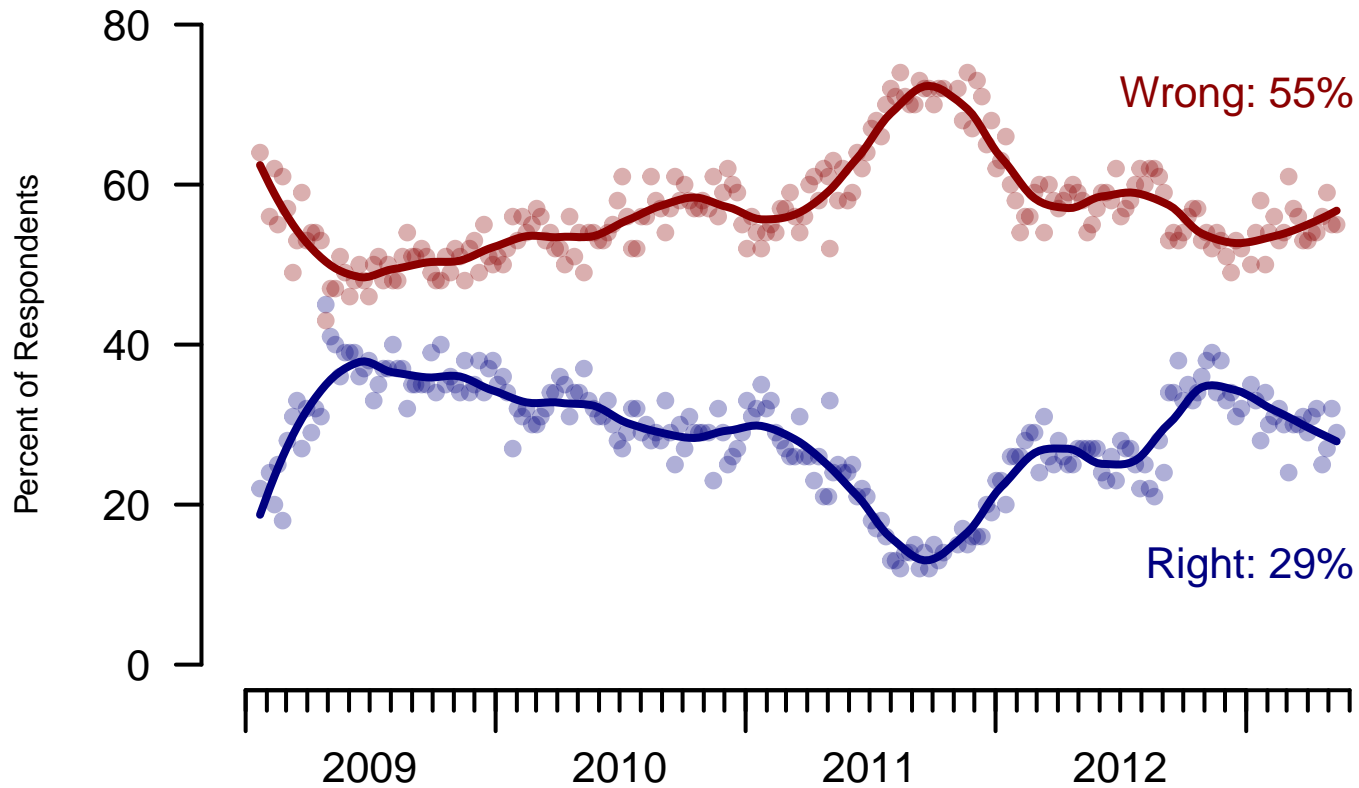


Figure 5: Direction of Country – All Adults

Direction of Country

"Would you say things in this country today are generally headed in the right direction or off on the wrong track?"

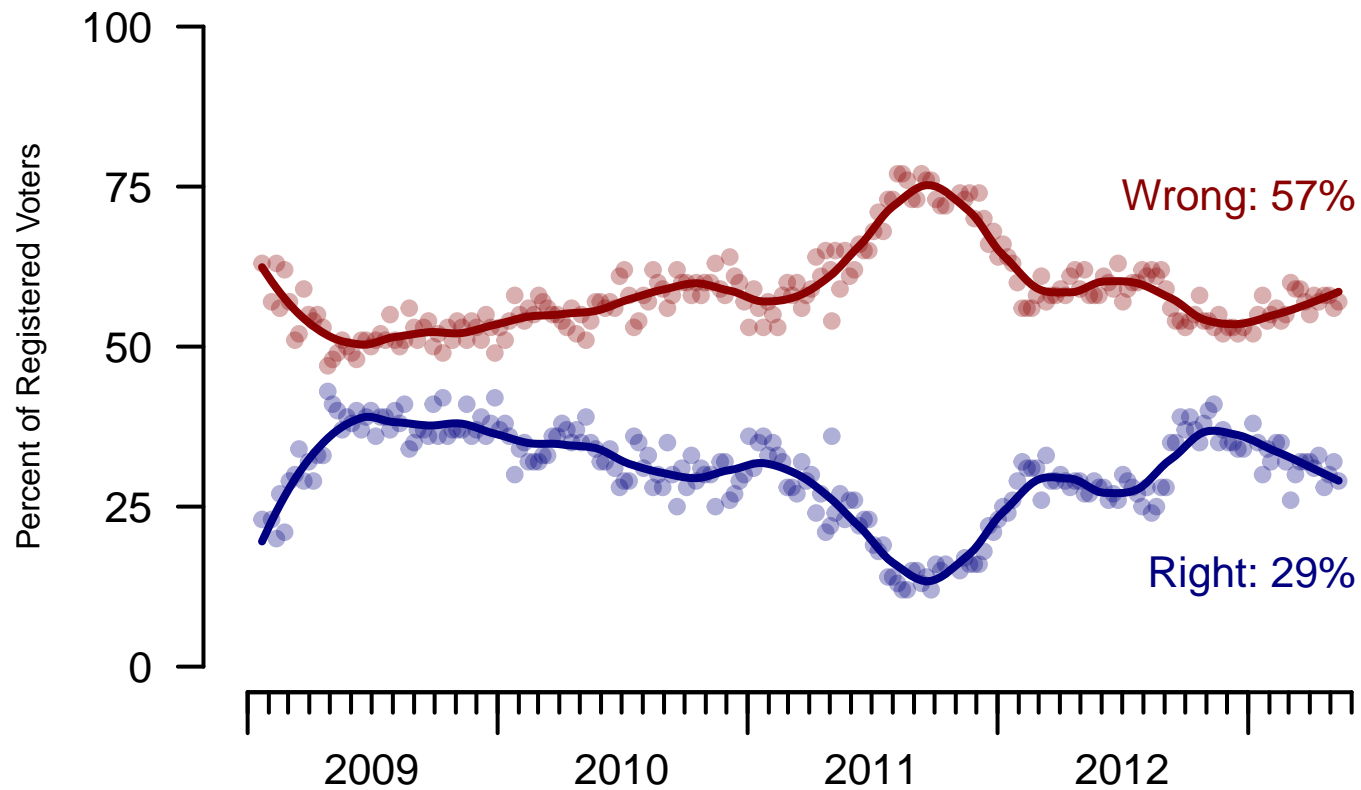


Figure 6: Direction of Country – Registered Voters

6. Direction of Country – This Week – All Adults

Would you say things in this country today are...

	Total	Age				Race			Gender		Education		
		18-29	30-44	45-64	65+	White	Black	Hispanic	Male	Female	HS or less	Some college	College graduate
Generally headed in the right direction	29%	31%	25%	30%	35%	26%	50%	26%	28%	30%	29%	23%	39%
Off on the wrong track	55%	49%	57%	58%	55%	62%	29%	48%	58%	53%	57%	61%	44%
Not sure	15%	20%	18%	12%	10%	13%	21%	26%	13%	17%	14%	16%	17%
Totals (Unweighted N)	100% (998)	100% (189)	100% (315)	100% (367)	100% (127)	100% (759)	100% (133)	100% (106)	100% (477)	100% (521)	100% (342)	100% (353)	100% (303)

	Total	Party ID			Ideology			Region				Family Income		
		Dem	Rep	Ind	Lib	Mod	Con	North-east	Mid-west	South	West	Under 40	40-100	100+
Generally headed in the right direction	29%	54%	10%	19%	49%	39%	8%	42%	18%	27%	36%	27%	30%	36%
Off on the wrong track	55%	31%	83%	64%	32%	45%	84%	39%	62%	59%	54%	58%	57%	54%
Not sure	15%	15%	7%	18%	19%	17%	7%	19%	20%	14%	10%	15%	13%	10%
Totals (Unweighted N)	100% (998)	100% (398)	100% (247)	100% (297)	100% (277)	100% (372)	100% (317)	100% (181)	100% (200)	100% (365)	100% (252)	100% (354)	100% (388)	100% (99)

Sponsorship	<i>The Economist</i>
Fieldwork	YouGov
Interviewing Dates	May 11-13, 2013
Target population	U.S. citizens, aged 18 and over.
Sampling method	Respondents were selected from YouGov's panel using sample matching. A random sample (stratified by age, gender, race, education, and region) was selected from the 2005–2007 American Community Study. Voter registration, turnout, religion, news interest, minor party identification, and non-placement on an ideology scale, were imputed from the 2008 Current Population Survey Registration and Voting Supplement and the Pew Religion in American Life Survey. Matching respondents were selected from the YouGov panel, an opt-in Internet panel.
Weighting	The sample was weighted using propensity scores based on age, gender, race, education, news interest, voter registration, and non-placement on an ideology scale. The weights range from 0.14 to 7.05, with a mean of one and a standard deviation of 1.
Number of respondents	1,000
Margin of error	± 4.4% (adjusted for weighting)
Margin of error (Registered Voters)	± 4.7% (adjusted for weighting)
Survey mode	Web-based interviews
Full results	Available online at http://today.yougov.com/news/categories/economist/ .