

Interviewing: November 19 - 22, 2016  
Sample: 1434 Adults nationwide online  
1002 registered voters nationwide online



# *The Economist/YouGov* Poll

## Weekly Tracking

For immediate release

**1. Approval of Obama as President – Historical**

Do you approve or disapprove of the way Barack Obama is handling his job as President?

	All Adults						
	Total Approve	Total Disapprove	Strongly Approve	Somewhat Approve	Somewhat Disapprove	Strongly Disapprove	Not Sure
November 18-22, 2016	52%	40%	29%	23%	15%	25%	8%
November 11-15, 2016	51%	41%	29%	22%	13%	28%	8%
November 4-8, 2016	49%	49%	30%	19%	11%	38%	2%
October 29-31, 2016	48%	48%	29%	19%	12%	36%	3%
October 22-24, 2016	47%	50%	29%	18%	13%	37%	3%
October 15-17, 2016	48%	49%	25%	23%	14%	35%	4%
October 8-10, 2016	50%	48%	27%	23%	12%	36%	3%
October 1-3, 2016	52%	45%	28%	24%	12%	33%	3%
September 24-26, 2016	53%	45%	29%	24%	12%	33%	2%
September 17-19, 2016	46%	49%	25%	21%	16%	33%	5%
One Year Ago	45%	50%	19%	26%	13%	37%	5%

	Registered Voters						
	Total Approve	Total Disapprove	Strongly Approve	Somewhat Approve	Somewhat Disapprove	Strongly Disapprove	Not Sure
November 18-22, 2016	55%	41%	33%	22%	12%	29%	4%
November 11-15, 2016	51%	45%	32%	19%	12%	33%	3%
November 4-8, 2016	49%	49%	30%	19%	11%	38%	2%
October 29-31, 2016	48%	48%	29%	19%	12%	36%	3%
October 22-24, 2016	47%	50%	29%	18%	13%	37%	3%
October 15-17, 2016	50%	48%	29%	21%	9%	39%	2%
October 8-10, 2016	49%	49%	28%	21%	11%	38%	1%
October 1-3, 2016	49%	49%	28%	21%	11%	38%	2%
September 24-26, 2016	50%	49%	28%	22%	10%	39%	2%
September 17-19, 2016	47%	51%	26%	21%	13%	38%	2%
One Year Ago	44%	53%	21%	23%	10%	43%	2%

## Obama Approval

"Do you approve or disapprove of the way Barack Obama is handling his job as President?"

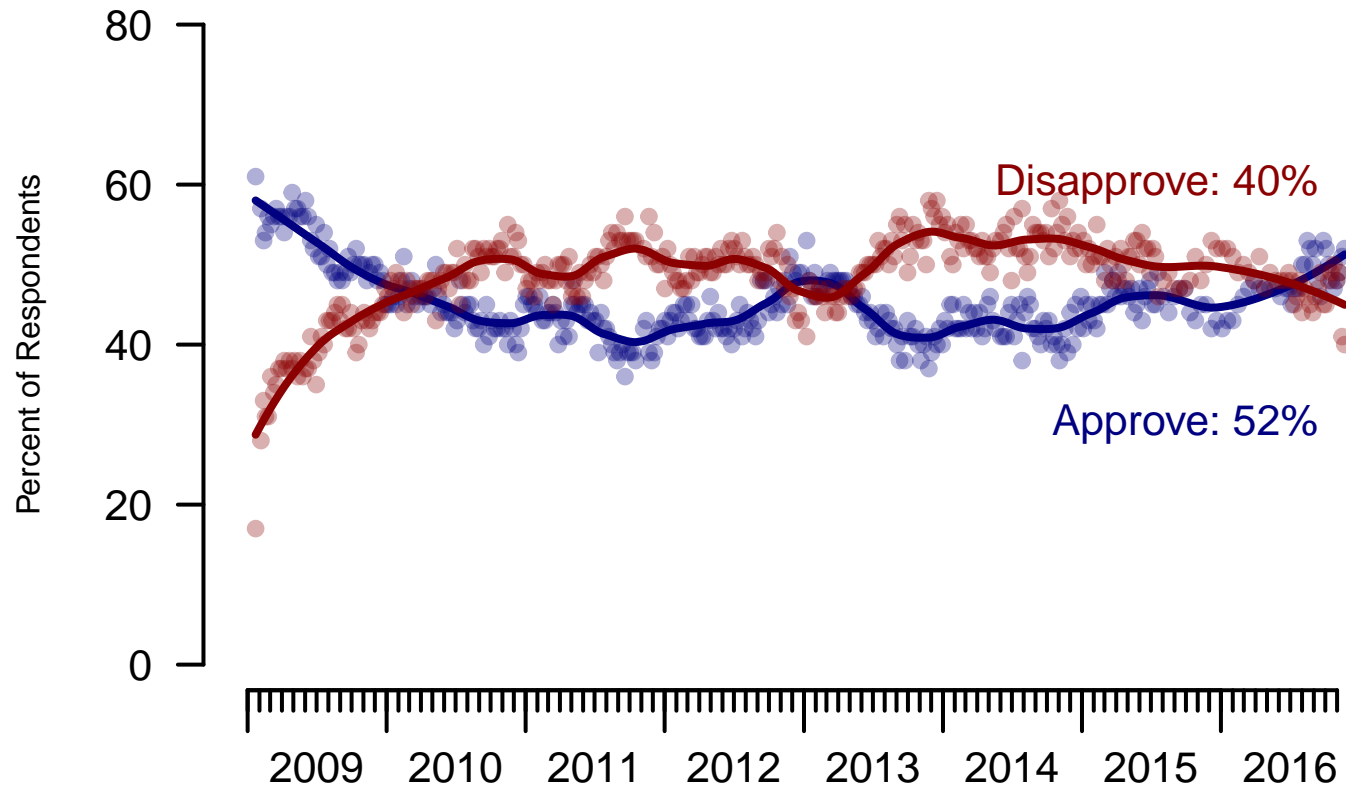


Figure 1: Obama Approval – All Adults

## Obama Approval

"Do you approve or disapprove of the way Barack Obama is handling his job as President?"

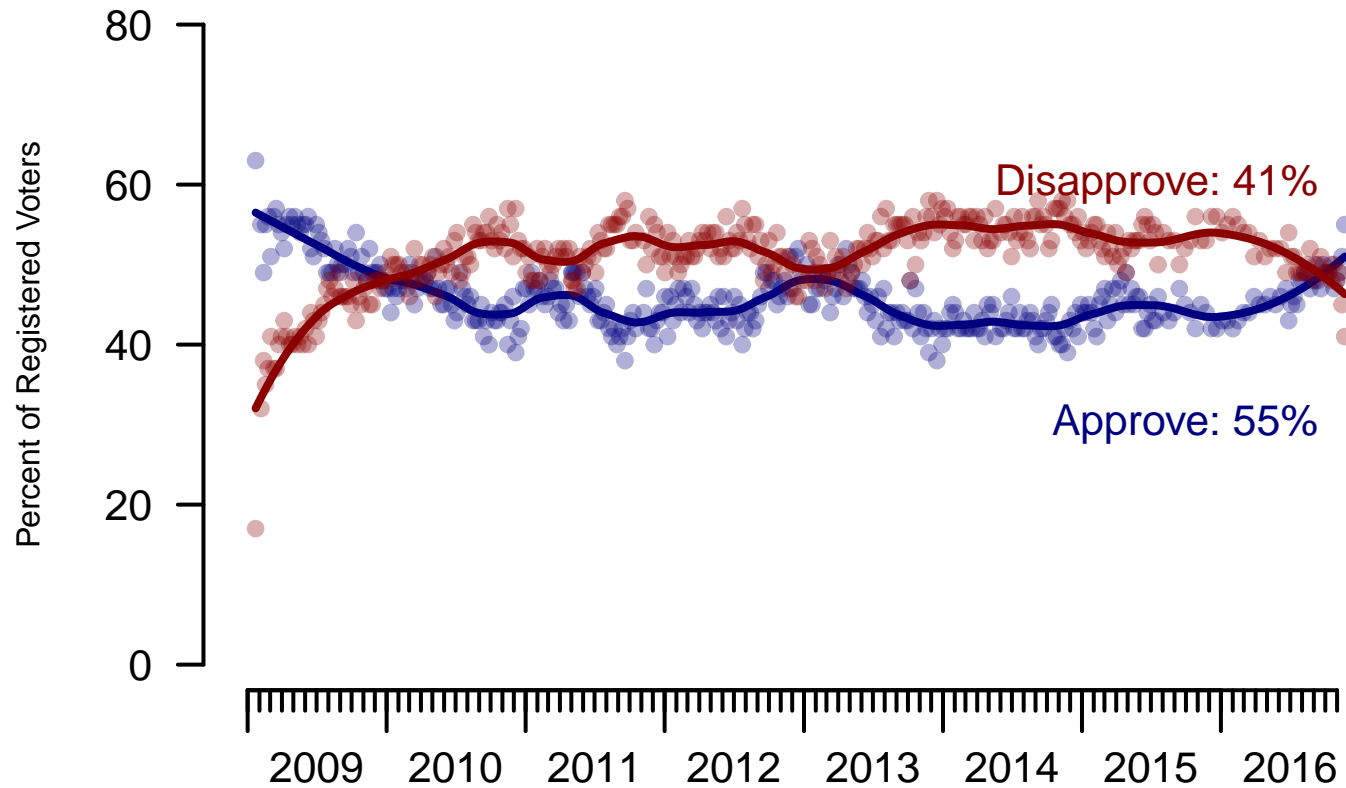


Figure 2: Obama Approval – Registered Voters

**2. Approval of Obama as President – This Week – All Adults**

Do you approve or disapprove of the way Barack Obama is handling his job as President?

	Age (4 category)					Race			Census Region			
	Total	Under 30	30-44	45-64	65+	White	Black	Hispanic	North-east	Mid-west	South	West
Strongly Approve	29%	27%	32%	30%	27%	23%	53%	39%	29%	32%	26%	33%
Somewhat Approve	23%	28%	24%	22%	18%	23%	26%	17%	30%	21%	20%	19%
Somewhat Disapprove	15%	14%	17%	15%	11%	14%	12%	19%	14%	10%	18%	16%
Strongly Disapprove	25%	11%	18%	30%	43%	32%	2%	12%	19%	32%	28%	23%
Not Sure	8%	20%	9%	3%	1%	7%	7%	13%	8%	6%	7%	8%
Totals (Unweighted N)	100% (1,434)	100% (294)	100% (390)	100% (526)	100% (224)	100% (1,128)	100% (159)	100% (147)	100% (288)	100% (292)	100% (484)	100% (288)

	Party ID			Ideology			Gender		Family Income (3 category)			Prefer not to say	
	Total	Dem	Ind	Rep	Lib	Mod	Con	Male	Female	Under 50	50-100		100+
Strongly Approve	29%	56%	22%	5%	52%	27%	12%	25%	34%	31%	26%	41%	21%
Somewhat Approve	23%	27%	25%	11%	31%	25%	11%	26%	19%	24%	21%	22%	19%
Somewhat Disapprove	15%	10%	16%	21%	11%	16%	16%	16%	14%	14%	18%	8%	18%
Strongly Disapprove	25%	4%	23%	61%	4%	19%	57%	28%	23%	21%	31%	29%	30%
Not Sure	8%	3%	14%	2%	2%	13%	4%	6%	10%	10%	4%	0%	13%
Totals (Unweighted N)	100% (1,434)	100% (514)	100% (592)	100% (328)	100% (412)	100% (628)	100% (394)	100% (655)	100% (779)	100% (745)	100% (352)	100% (165)	100% (172)

**3. Approval of U.S. Congress – Historical**

Overall, do you approve or disapprove of the way that the United States Congress is handling its job?

All Adults

	<b>Total Approve</b>	<b>Total Disapprove</b>	Strongly Approve	Somewhat Approve	Neutral	Somewhat Disapprove	Strongly Disapprove	Not Sure
November 18-22, 2016	15%	52%	4%	11%	19%	20%	32%	14%
November 11-15, 2016	14%	52%	3%	11%	19%	20%	32%	15%
November 4-8, 2016	11%	65%	3%	8%	16%	23%	42%	8%
October 29-31, 2016	12%	64%	3%	9%	17%	24%	40%	7%
October 22-24, 2016	11%	64%	3%	8%	17%	25%	39%	8%
October 15-17, 2016	11%	60%	2%	9%	18%	23%	37%	11%
October 8-10, 2016	11%	60%	2%	9%	18%	21%	39%	11%
October 1-3, 2016	12%	62%	4%	8%	19%	23%	39%	9%
September 24-26, 2016	13%	61%	4%	9%	18%	23%	38%	8%
September 17-19, 2016	10%	63%	3%	7%	18%	24%	39%	9%
One Year Ago	13%	56%	3%	10%	20%	24%	32%	11%

Registered Voters

	<b>Total Approve</b>	<b>Total Disapprove</b>	Strongly Approve	Somewhat Approve	Neutral	Somewhat Disapprove	Strongly Disapprove	Not Sure
November 18-22, 2016	14%	61%	4%	10%	16%	22%	39%	9%
November 11-15, 2016	14%	62%	3%	11%	16%	23%	39%	9%
November 4-8, 2016	11%	65%	3%	8%	16%	23%	42%	8%
October 29-31, 2016	12%	64%	3%	9%	17%	24%	40%	7%
October 22-24, 2016	11%	64%	3%	8%	17%	25%	39%	8%
October 15-17, 2016	12%	70%	3%	9%	13%	26%	44%	6%
October 8-10, 2016	11%	64%	2%	9%	18%	22%	42%	7%
October 1-3, 2016	9%	70%	3%	6%	16%	24%	46%	6%
September 24-26, 2016	9%	69%	3%	6%	15%	26%	43%	7%
September 17-19, 2016	11%	70%	3%	8%	15%	25%	45%	4%
One Year Ago	13%	65%	2%	11%	17%	27%	38%	5%

### Congress Approval

"Do you approve of the way the U.S. Congress is handling its job?"

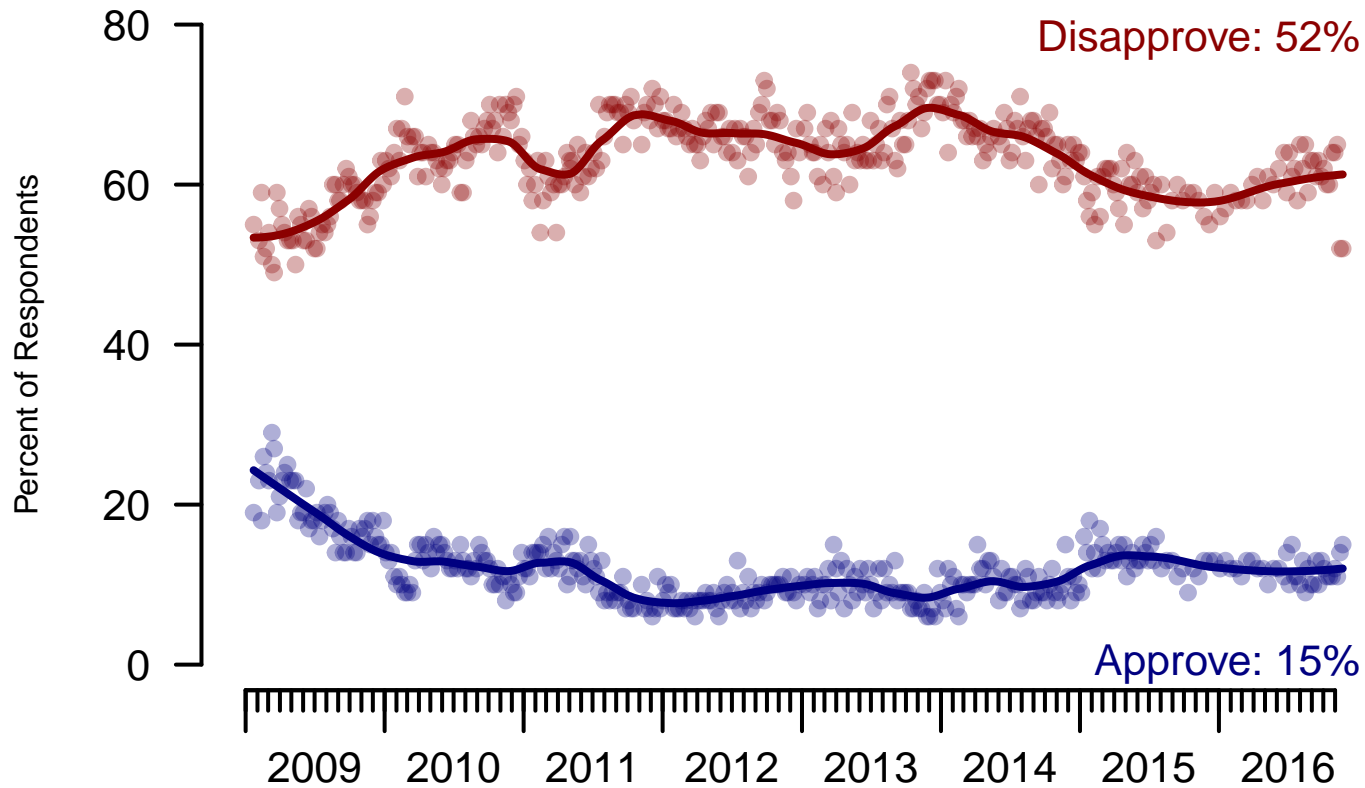


Figure 3: Congress Approval – All Adults

## Congress Approval

"Do you approve of the way the  
U.S. Congress is handling its job?"

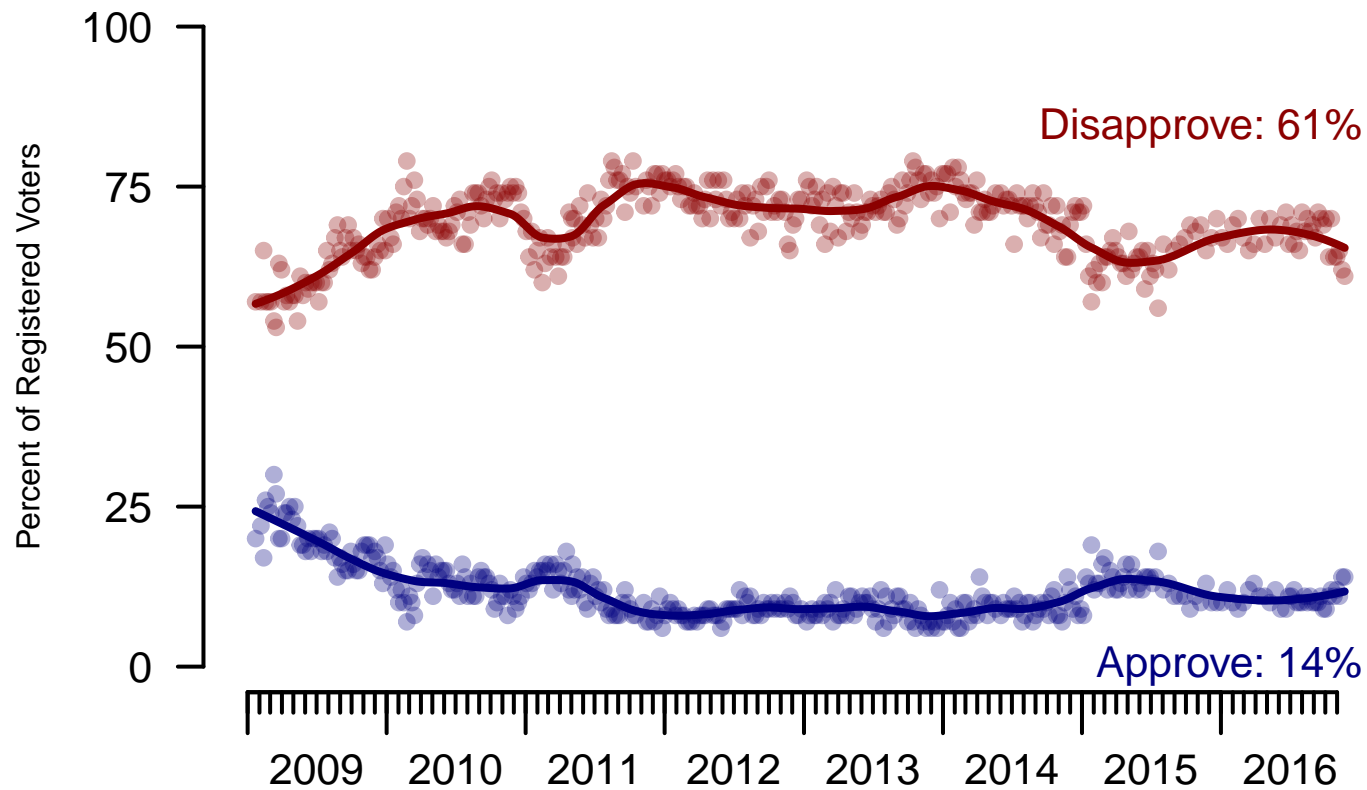


Figure 4: Congress Approval – Registered Voters



**4. Approval of U.S. Congress – This Week – All Adults**

Overall, do you approve or disapprove of the way that the United States Congress is handling its job?

	Age (4 category)					Race			Census Region			
	Total	Under 30	30-44	45-64	65+	White	Black	Hispanic	North-east	Mid-west	South	West
Strongly approve	4%	3%	9%	4%	0%	3%	9%	7%	4%	1%	4%	4%
Somewhat approve	11%	14%	13%	10%	6%	9%	18%	16%	10%	7%	13%	10%
Neither approve nor disapprove	19%	23%	20%	16%	17%	18%	14%	28%	22%	12%	19%	20%
Somewhat disapprove	20%	18%	20%	22%	19%	22%	14%	15%	23%	23%	22%	15%
Strongly disapprove	32%	16%	23%	39%	49%	35%	31%	19%	27%	45%	29%	36%
Not sure	14%	26%	15%	9%	9%	14%	15%	15%	15%	11%	13%	15%
Totals (Unweighted N)	100% (1,397)	100% (285)	100% (374)	100% (515)	100% (223)	100% (1,103)	100% (154)	100% (140)	100% (281)	100% (287)	100% (467)	100% (282)

	Party ID			Ideology			Gender		Family Income (3 category)				
	Total	Dem	Ind	Rep	Lib	Mod	Con	Male	Female	Under 50	50-100	100+	Prefer not to say
Strongly approve	4%	6%	3%	5%	5%	4%	4%	6%	3%	6%	2%	3%	3%
Somewhat approve	11%	14%	6%	16%	10%	10%	13%	11%	11%	12%	10%	8%	10%
Neither approve nor disapprove	19%	19%	19%	19%	14%	21%	19%	17%	21%	21%	18%	11%	14%
Somewhat disapprove	20%	16%	19%	29%	18%	18%	26%	21%	19%	18%	26%	16%	22%
Strongly disapprove	32%	37%	31%	26%	44%	27%	29%	35%	29%	26%	34%	58%	33%
Not sure	14%	9%	23%	6%	8%	21%	8%	11%	18%	17%	10%	4%	17%
Totals (Unweighted N)	100% (1,397)	100% (501)	100% (575)	100% (321)	100% (400)	100% (614)	100% (383)	100% (645)	100% (752)	100% (730)	100% (344)	100% (162)	100% (161)

**5. Direction of country – Historical**

Would you say things in this country today are...

	All Adults		
	Right Direction	Wrong Track	Not Sure
November 18-22, 2016	25%	57%	18%
November 11-15, 2016	23%	60%	16%
November 4-8, 2016	29%	62%	9%
October 29-31, 2016	29%	63%	8%
October 22-24, 2016	29%	62%	8%
October 15-17, 2016	28%	63%	9%
October 8-10, 2016	28%	60%	11%
October 1-3, 2016	28%	62%	10%
September 24-26, 2016	25%	65%	10%
September 17-19, 2016	29%	61%	10%
One Year Ago	24%	64%	12%

	Registered Voters		
	Right Direction	Wrong Track	Not Sure
November 18-22, 2016	24%	60%	16%
November 11-15, 2016	22%	67%	12%
November 4-8, 2016	29%	62%	9%
October 29-31, 2016	29%	63%	8%
October 22-24, 2016	29%	62%	8%
October 15-17, 2016	31%	62%	7%
October 8-10, 2016	30%	62%	8%
October 1-3, 2016	30%	63%	7%
September 24-26, 2016	27%	65%	8%
September 17-19, 2016	30%	63%	7%
One Year Ago	26%	65%	9%

## Direction of Country

"Would you say things in this country today are generally headed in the right direction or off on the wrong track?"

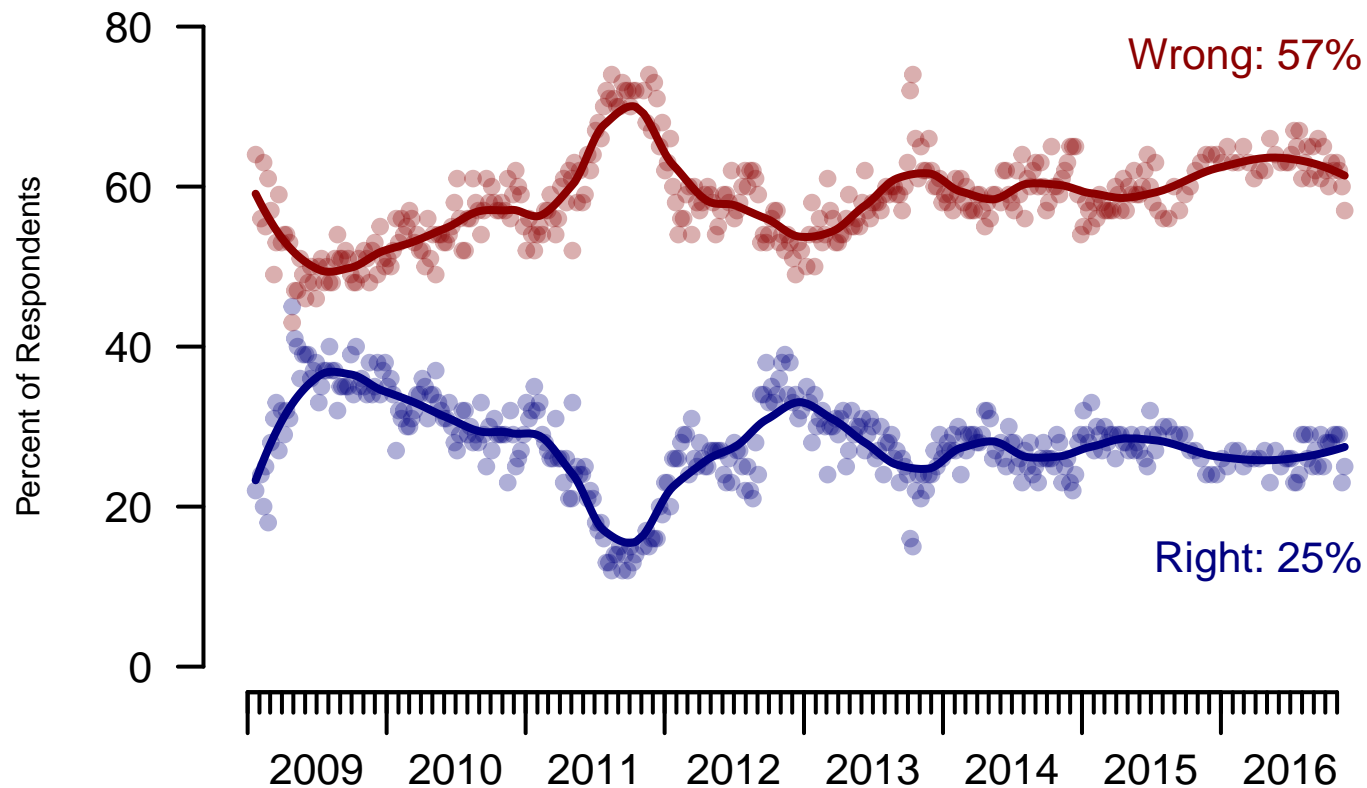


Figure 5: Direction of Country – All Adults

## Direction of Country

"Would you say things in this country today are generally headed in the right direction or off on the wrong track?"

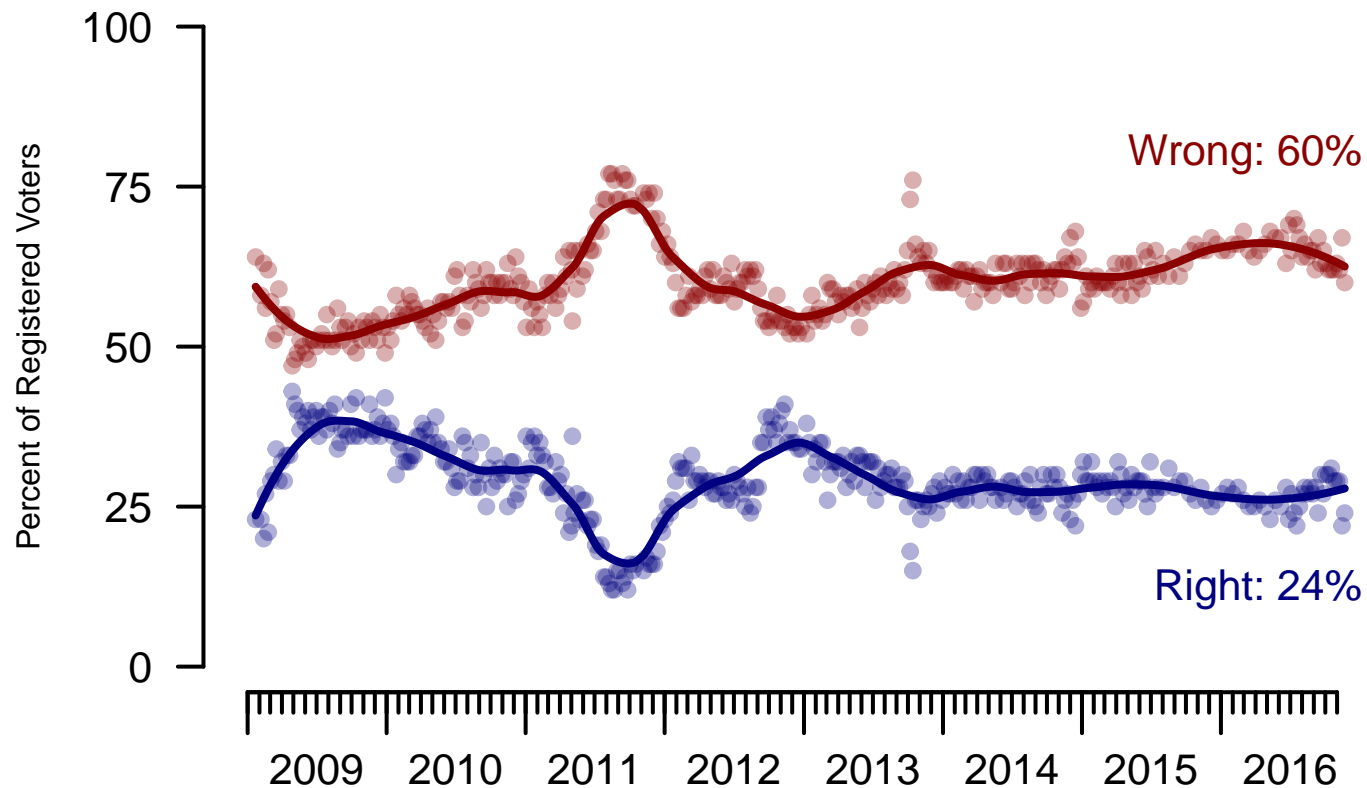


Figure 6: Direction of Country – Registered Voters

**6. Direction of Country – This Week – All Adults**

Would you say things in this country today are...

	Age (4 category)					Race			Census Region			
	Total	Under 30	30-44	45-64	65+	White	Black	Hispanic	North-east	Mid-west	South	West
Generally headed in the right direction	25%	33%	23%	20%	27%	24%	25%	30%	26%	14%	26%	30%
Off on the wrong track	57%	48%	58%	62%	56%	58%	55%	50%	55%	63%	60%	55%
Not sure	18%	19%	19%	18%	17%	17%	20%	20%	19%	23%	14%	16%
Totals (Unweighted N)	100% (1,434)	100% (294)	100% (390)	100% (526)	100% (224)	100% (1,128)	100% (159)	100% (147)	100% (288)	100% (292)	100% (484)	100% (288)

	Party ID			Ideology			Gender		Family Income (3 category)				
	Total	Dem	Ind	Rep	Lib	Mod	Con	Male	Female	Under 50	50-100	100+	Prefer not to say
Generally headed in the right direction	25%	26%	22%	32%	24%	24%	29%	29%	21%	27%	23%	28%	20%
Off on the wrong track	57%	58%	55%	58%	61%	53%	59%	54%	59%	53%	62%	63%	55%
Not sure	18%	16%	23%	10%	16%	23%	12%	17%	20%	20%	15%	9%	25%
Totals (Unweighted N)	100% (1,434)	100% (514)	100% (592)	100% (328)	100% (412)	100% (628)	100% (394)	100% (655)	100% (779)	100% (745)	100% (352)	100% (165)	100% (172)

**The Economist/YouGov Poll**  
November 19 - 22, 2016



<b>Sponsorship</b>	<i>The Economist</i>
<b>Fieldwork</b>	YouGov
<b>Interviewing Dates</b>	November 19 - 22, 2016
<b>Target population</b>	U.S. citizens, aged 18 and over.
<b>Sampling method</b>	Respondents were selected from YouGov's opt-in Internet panel using sample matching. A random sample (stratified by age, gender, race, education, and region) was selected from the 2014 American Community Study. Voter registration was imputed from the November 2014 Current Population Survey Registration and Voting Supplement.
<b>Weighting</b>	The sample was weighted based on age, gender, race, education, and 2016 Presidential vote. The weights range from 0.14 to 4.37, with a mean of one and a standard deviation of 0.7.
<b>Number of respondents</b>	1434
<b>Margin of error</b>	± 3.1% (adjusted for weighting)
<b>Margin of error (Registered Voters)</b>	± 3.5% (adjusted for weighting)
<b>Survey mode</b>	Web-based interviews
<b>Full results</b>	Available online at <a href="http://today.yougov.com/news/categories/economist/">http://today.yougov.com/news/categories/economist/</a> .