

Interviewing: December 31, 2016 - January 3, 2017
Sample: 1647 Adults nationwide online
1234 registered voters nationwide online



The Economist/YouGov Poll

Weekly Tracking

For immediate release

1. Approval of Obama as President – Historical

Do you approve or disapprove of the way Barack Obama is handling his job as President?

	All Adults						
	Total Approve	Total Disapprove	Strongly Approve	Somewhat Approve	Somewhat Disapprove	Strongly Disapprove	Not Sure
December 30, 2016 - January 3, 2017	50%	42%	26%	24%	13%	29%	8%
December 23-27, 2016	48%	43%	25%	23%	14%	29%	10%
December 16-20, 2016	48%	43%	24%	24%	11%	32%	9%
December 10-12, 2016	48%	42%	25%	23%	14%	28%	9%
December 3-5, 2016	52%	40%	30%	22%	11%	29%	9%
November 26-28, 2016	51%	41%	28%	23%	13%	28%	8%
November 19-21, 2016	52%	40%	29%	23%	15%	25%	8%
November 12-14, 2016	51%	41%	29%	22%	13%	28%	8%
November 5-7, 2016	49%	49%	30%	19%	11%	38%	2%
October 29-31, 2016	48%	48%	29%	19%	12%	36%	3%
One Year Ago	42%	52%	16%	26%	15%	37%	6%

	Registered Voters						
	Total Approve	Total Disapprove	Strongly Approve	Somewhat Approve	Somewhat Disapprove	Strongly Disapprove	Not Sure
December 30, 2016 - January 3, 2017	51%	43%	28%	23%	11%	32%	5%
December 23-27, 2016	51%	44%	28%	23%	12%	32%	5%
December 16-20, 2016	50%	44%	27%	23%	10%	34%	5%
December 10-12, 2016	51%	45%	30%	21%	12%	33%	5%
December 3-5, 2016	52%	45%	32%	20%	12%	33%	3%
November 26-28, 2016	52%	45%	30%	22%	13%	32%	4%
November 19-21, 2016	55%	41%	33%	22%	12%	29%	4%
November 12-14, 2016	51%	45%	32%	19%	12%	33%	3%
November 5-7, 2016	49%	49%	30%	19%	11%	38%	2%
October 29-31, 2016	48%	48%	29%	19%	12%	36%	3%
One Year Ago	43%	54%	19%	24%	13%	41%	3%

Obama Approval

"Do you approve or disapprove of the way Barack Obama is handling his job as President?"

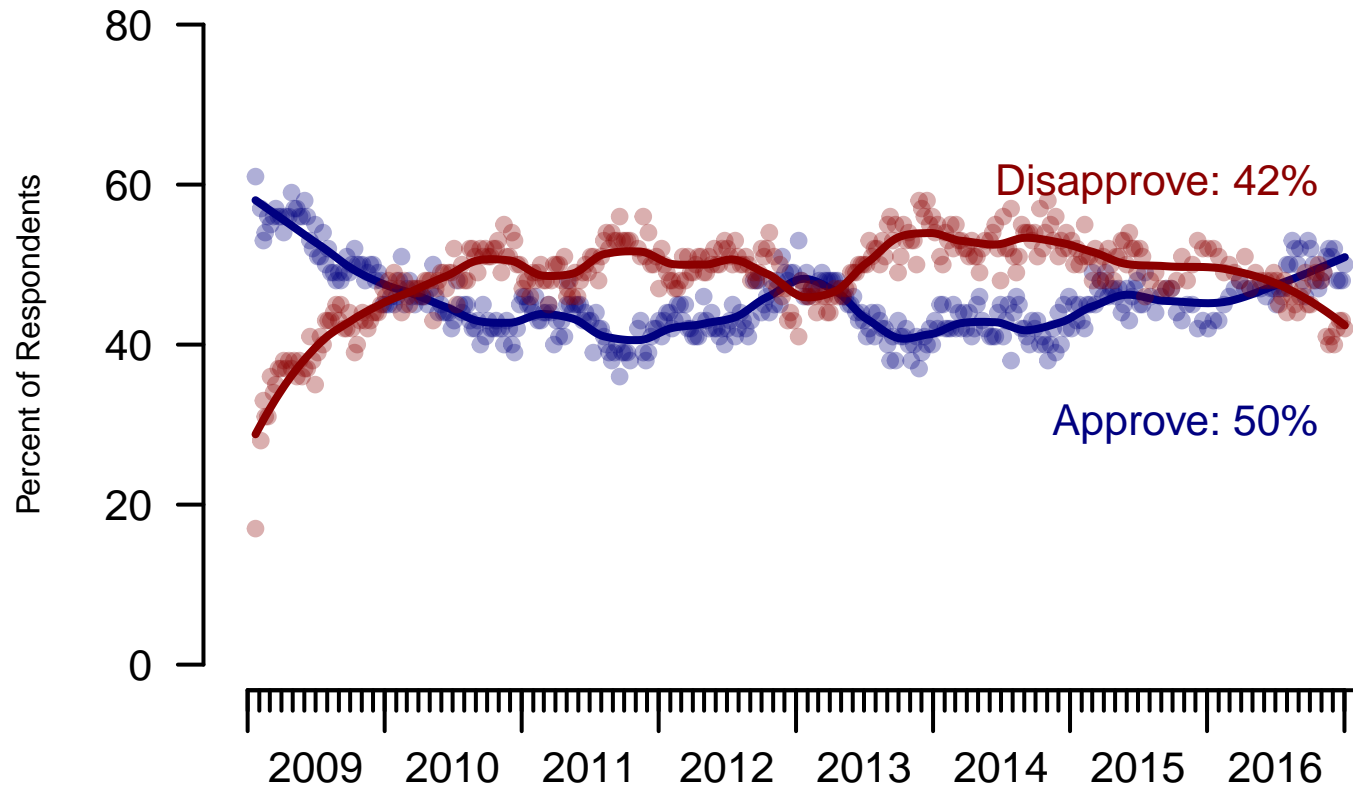


Figure 1: Obama Approval – All Adults

Obama Approval

"Do you approve or disapprove of the way Barack Obama is handling his job as President?"

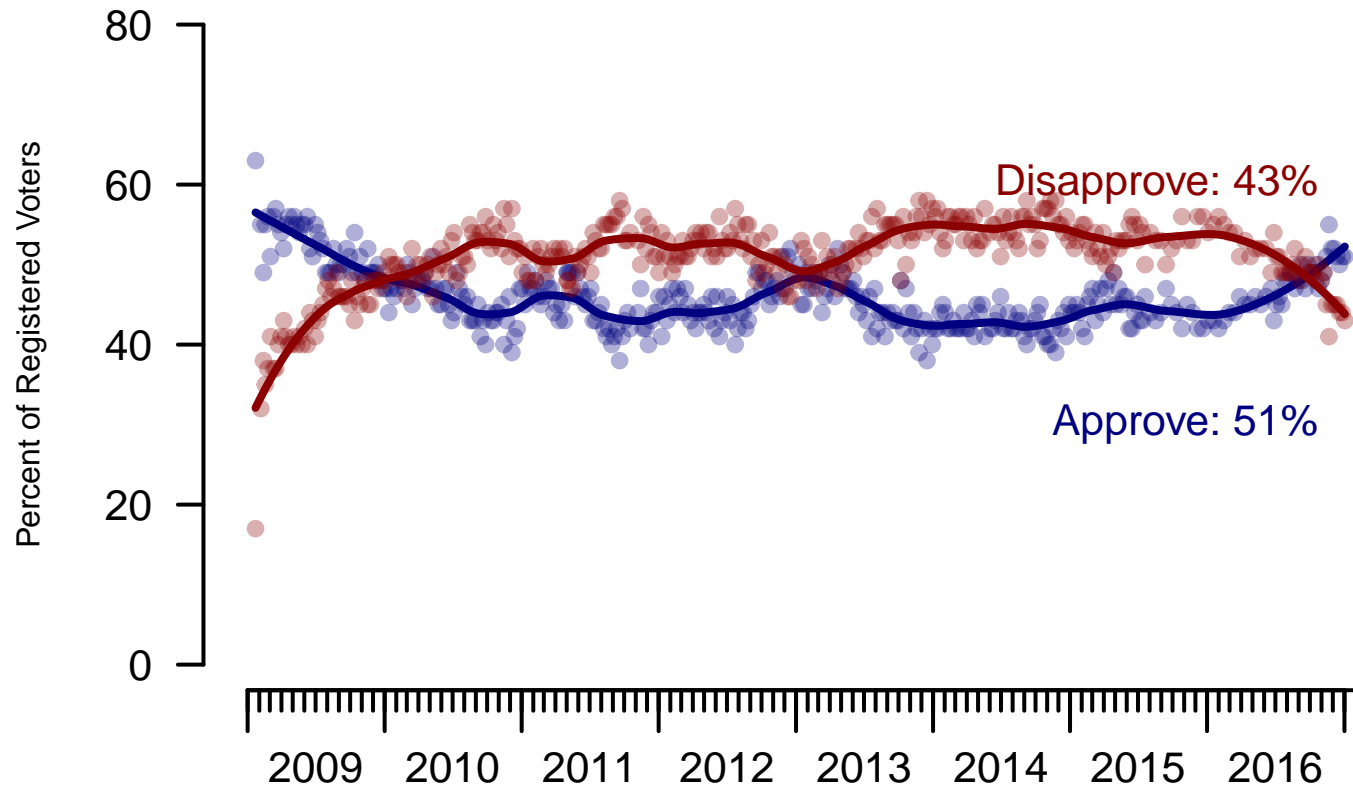


Figure 2: Obama Approval – Registered Voters

2. Approval of Obama as President – This Week – All Adults

Do you approve or disapprove of the way Barack Obama is handling his job as President?

	Age (4 category)					Race			Census Region			
	Total	Under 30	30-44	45-64	65+	White	Black	Hispanic	North-east	Mid-west	South	West
Strongly Approve	26%	26%	27%	24%	29%	22%	50%	26%	26%	25%	26%	29%
Somewhat Approve	24%	30%	24%	24%	19%	22%	25%	34%	28%	24%	21%	27%
Somewhat Disapprove	13%	18%	13%	12%	7%	14%	8%	8%	10%	11%	15%	11%
Strongly Disapprove	29%	14%	22%	35%	44%	35%	3%	19%	26%	31%	31%	27%
Not Sure	8%	13%	13%	6%	0%	6%	14%	13%	10%	8%	8%	6%
Totals (Unweighted N)	100% (1,647)	100% (325)	100% (432)	100% (635)	100% (255)	100% (1,284)	100% (190)	100% (173)	100% (313)	100% (401)	100% (566)	100% (347)

	Party ID			Ideology			Gender		Family Income (3 category)			Prefer not to say	
	Total	Dem	Ind	Rep	Lib	Mod	Con	Male	Female	Under 50	50-100		100+
Strongly Approve	26%	52%	18%	4%	49%	25%	10%	23%	29%	27%	22%	33%	28%
Somewhat Approve	24%	32%	24%	13%	31%	29%	11%	24%	24%	27%	23%	25%	11%
Somewhat Disapprove	13%	8%	14%	17%	10%	14%	13%	13%	12%	12%	13%	9%	15%
Strongly Disapprove	29%	5%	30%	61%	6%	19%	62%	33%	25%	24%	37%	28%	34%
Not Sure	8%	2%	15%	4%	4%	13%	4%	7%	9%	9%	5%	6%	11%
Totals (Unweighted N)	100% (1,647)	100% (631)	100% (633)	100% (383)	100% (493)	100% (672)	100% (482)	100% (763)	100% (884)	100% (823)	100% (451)	100% (195)	100% (178)

3. Approval of U.S. Congress – Historical

Overall, do you approve or disapprove of the way that the United States Congress is handling its job?

	All Adults							
	Total Approve	Total Disapprove	Strongly Approve	Somewhat Approve	Neutral	Somewhat Disapprove	Strongly Disapprove	Not Sure
December 30, 2016 - January 3, 2017	15%	49%	3%	12%	19%	20%	29%	17%
December 23-27, 2016	12%	49%	3%	9%	22%	19%	30%	17%
December 16-20, 2016	11%	54%	3%	8%	20%	21%	33%	15%
December 10-12, 2016	12%	53%	2%	10%	19%	22%	31%	16%
December 3-5, 2016	14%	54%	4%	10%	17%	22%	32%	16%
November 26-28, 2016	15%	49%	4%	11%	21%	19%	30%	16%
November 19-21, 2016	15%	52%	4%	11%	19%	20%	32%	14%
November 12-14, 2016	14%	52%	3%	11%	19%	20%	32%	15%
November 5-7, 2016	11%	65%	3%	8%	16%	23%	42%	8%
October 29-31, 2016	12%	64%	3%	9%	17%	24%	40%	7%
One Year Ago	12%	56%	2%	10%	21%	22%	34%	12%

	Registered Voters							
	Total Approve	Total Disapprove	Strongly Approve	Somewhat Approve	Neutral	Somewhat Disapprove	Strongly Disapprove	Not Sure
December 30, 2016 - January 3, 2017	13%	55%	3%	10%	19%	21%	34%	13%
December 23-27, 2016	12%	56%	3%	9%	21%	21%	35%	11%
December 16-20, 2016	11%	59%	3%	8%	19%	23%	36%	10%
December 10-12, 2016	12%	59%	2%	10%	18%	23%	36%	11%
December 3-5, 2016	13%	65%	3%	10%	15%	25%	40%	8%
November 26-28, 2016	15%	57%	5%	10%	18%	22%	35%	10%
November 19-21, 2016	14%	61%	4%	10%	16%	22%	39%	9%
November 12-14, 2016	14%	62%	3%	11%	16%	23%	39%	9%
November 5-7, 2016	11%	65%	3%	8%	16%	23%	42%	8%
October 29-31, 2016	12%	64%	3%	9%	17%	24%	40%	7%
One Year Ago	10%	67%	2%	8%	17%	26%	41%	6%

Congress Approval

"Do you approve of the way the U.S. Congress is handling its job?"

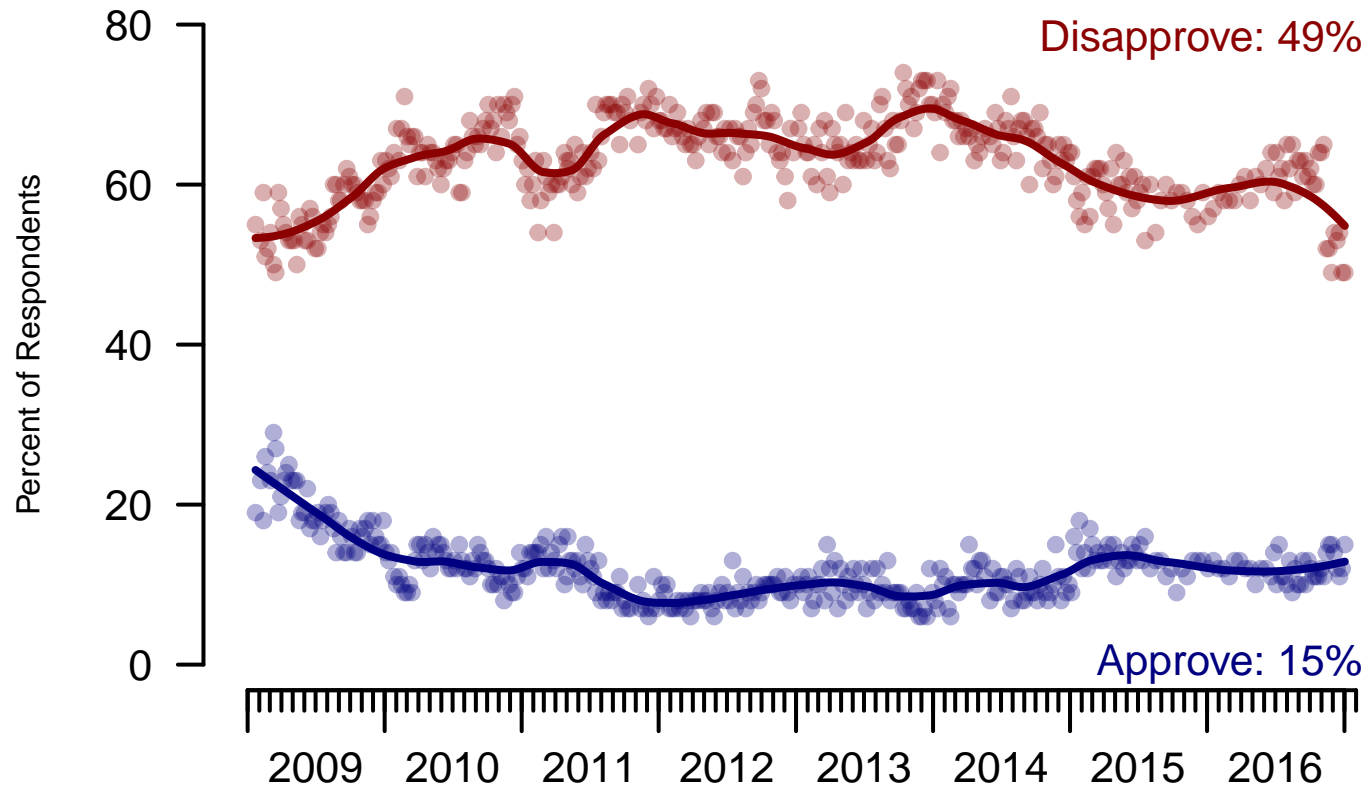


Figure 3: Congress Approval – All Adults

Congress Approval

"Do you approve of the way the U.S. Congress is handling its job?"

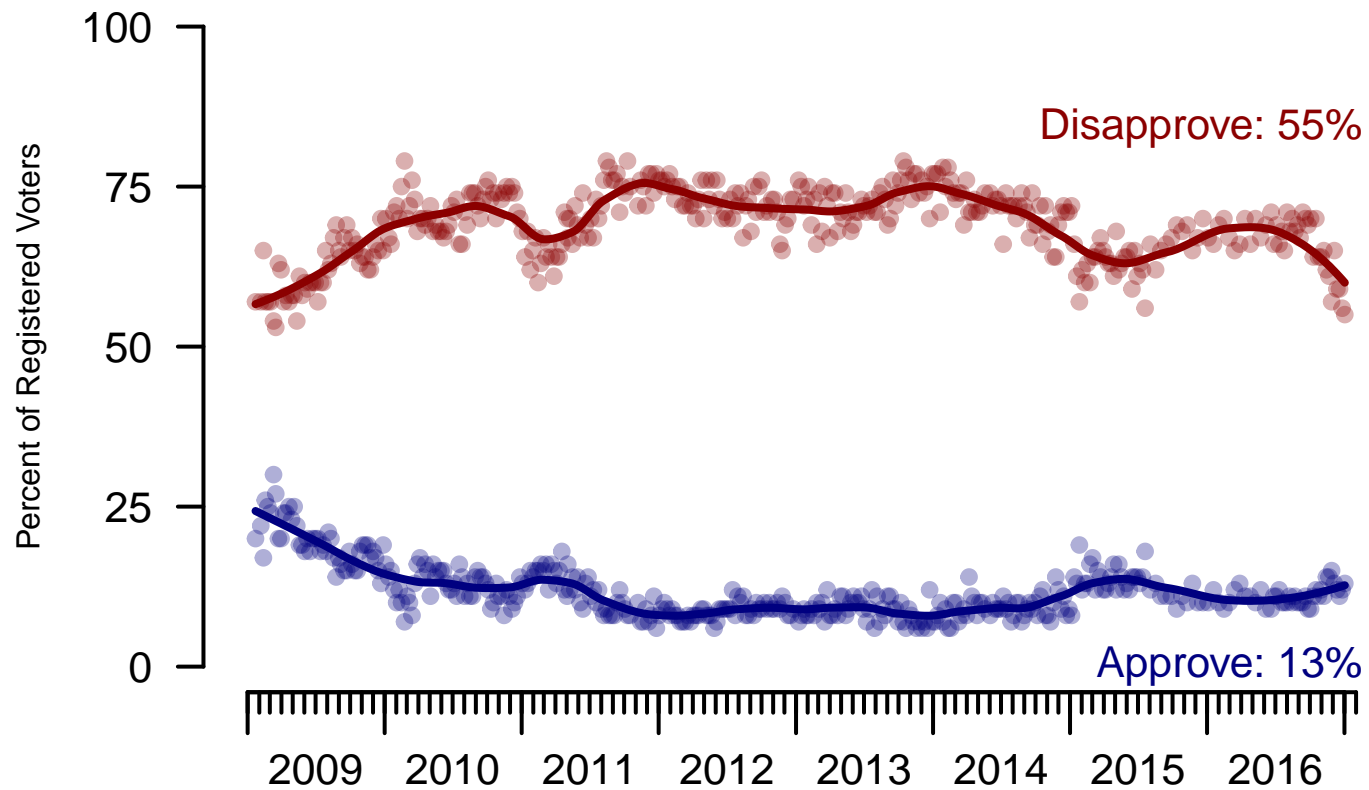


Figure 4: Congress Approval – Registered Voters

4. Approval of U.S. Congress – This Week – All Adults

Overall, do you approve or disapprove of the way that the United States Congress is handling its job?

	Age (4 category)					Race			Census Region			
	Total	Under 30	30-44	45-64	65+	White	Black	Hispanic	North-east	Mid-west	South	West
Strongly approve	3%	4%	4%	2%	2%	3%	3%	3%	1%	1%	3%	7%
Somewhat approve	12%	17%	13%	10%	7%	11%	12%	15%	16%	12%	9%	12%
Neither approve nor disapprove	19%	18%	22%	18%	18%	19%	17%	24%	20%	19%	19%	19%
Somewhat disapprove	20%	15%	17%	24%	24%	22%	13%	16%	20%	18%	23%	17%
Strongly disapprove	29%	21%	23%	33%	42%	32%	31%	17%	24%	35%	27%	35%
Not sure	17%	25%	22%	13%	7%	14%	24%	25%	19%	15%	19%	11%
Totals (Unweighted N)	100% (1,637)	100% (321)	100% (428)	100% (634)	100% (254)	100% (1,275)	100% (189)	100% (173)	100% (311)	100% (399)	100% (561)	100% (347)

	Party ID			Ideology			Gender		Family Income (3 category)				
	Total	Dem	Ind	Rep	Lib	Mod	Con	Male	Female	Under 50	50-100	100+	Prefer not to say
Strongly approve	3%	2%	1%	8%	2%	2%	5%	3%	3%	2%	4%	2%	3%
Somewhat approve	12%	12%	8%	19%	14%	8%	16%	15%	9%	14%	12%	8%	6%
Neither approve nor disapprove	19%	20%	17%	23%	12%	22%	22%	18%	20%	23%	17%	9%	17%
Somewhat disapprove	20%	14%	20%	29%	14%	19%	28%	21%	20%	18%	23%	25%	21%
Strongly disapprove	29%	39%	30%	13%	47%	26%	20%	31%	28%	24%	33%	46%	28%
Not sure	17%	13%	24%	8%	12%	24%	10%	13%	21%	20%	11%	9%	24%
Totals (Unweighted N)	100% (1,637)	100% (627)	100% (629)	100% (381)	100% (490)	100% (668)	100% (479)	100% (760)	100% (877)	100% (818)	100% (447)	100% (195)	100% (177)

5. Direction of country – Historical

Would you say things in this country today are...

	All Adults		
	Right Direction	Wrong Track	Not Sure
December 30, 2016 - January 3, 2017	26%	57%	17%
December 23-27, 2016	25%	57%	17%
December 16-20, 2016	24%	59%	17%
December 10-12, 2016	27%	56%	17%
December 3-5, 2016	26%	56%	18%
November 26-28, 2016	25%	58%	18%
November 19-21, 2016	25%	57%	18%
November 12-14, 2016	23%	60%	16%
November 5-7, 2016	29%	62%	9%
October 29-31, 2016	29%	63%	8%
One Year Ago	26%	63%	11%

	Registered Voters		
	Right Direction	Wrong Track	Not Sure
December 30, 2016 - January 3, 2017	26%	60%	14%
December 23-27, 2016	25%	62%	13%
December 16-20, 2016	24%	61%	14%
December 10-12, 2016	27%	59%	14%
December 3-5, 2016	26%	61%	13%
November 26-28, 2016	25%	61%	14%
November 19-21, 2016	24%	60%	16%
November 12-14, 2016	22%	67%	12%
November 5-7, 2016	29%	62%	9%
October 29-31, 2016	29%	63%	8%
One Year Ago	27%	65%	8%

Direction of Country

"Would you say things in this country today are generally headed in the right direction or off on the wrong track?"

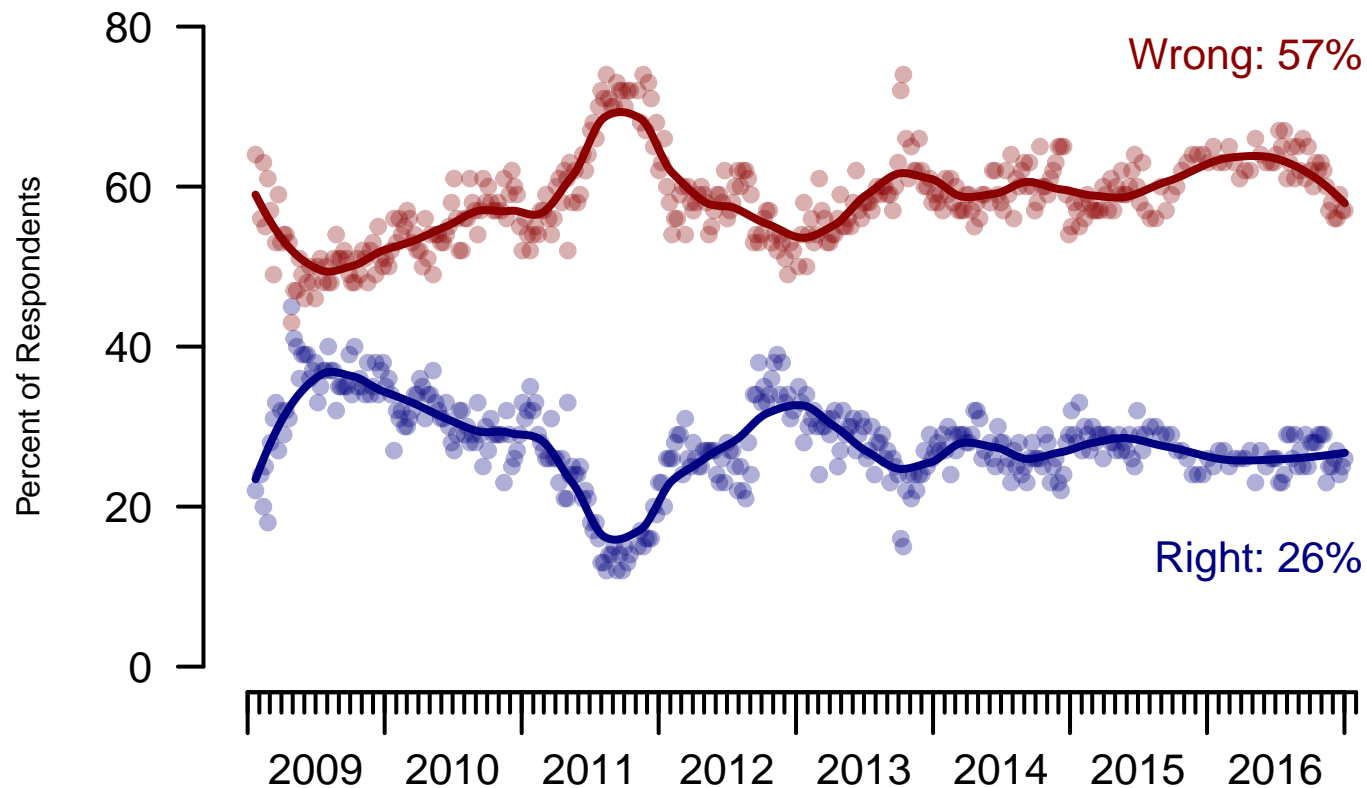


Figure 5: Direction of Country – All Adults

Direction of Country

"Would you say things in this country today are generally headed in the right direction or off on the wrong track?"

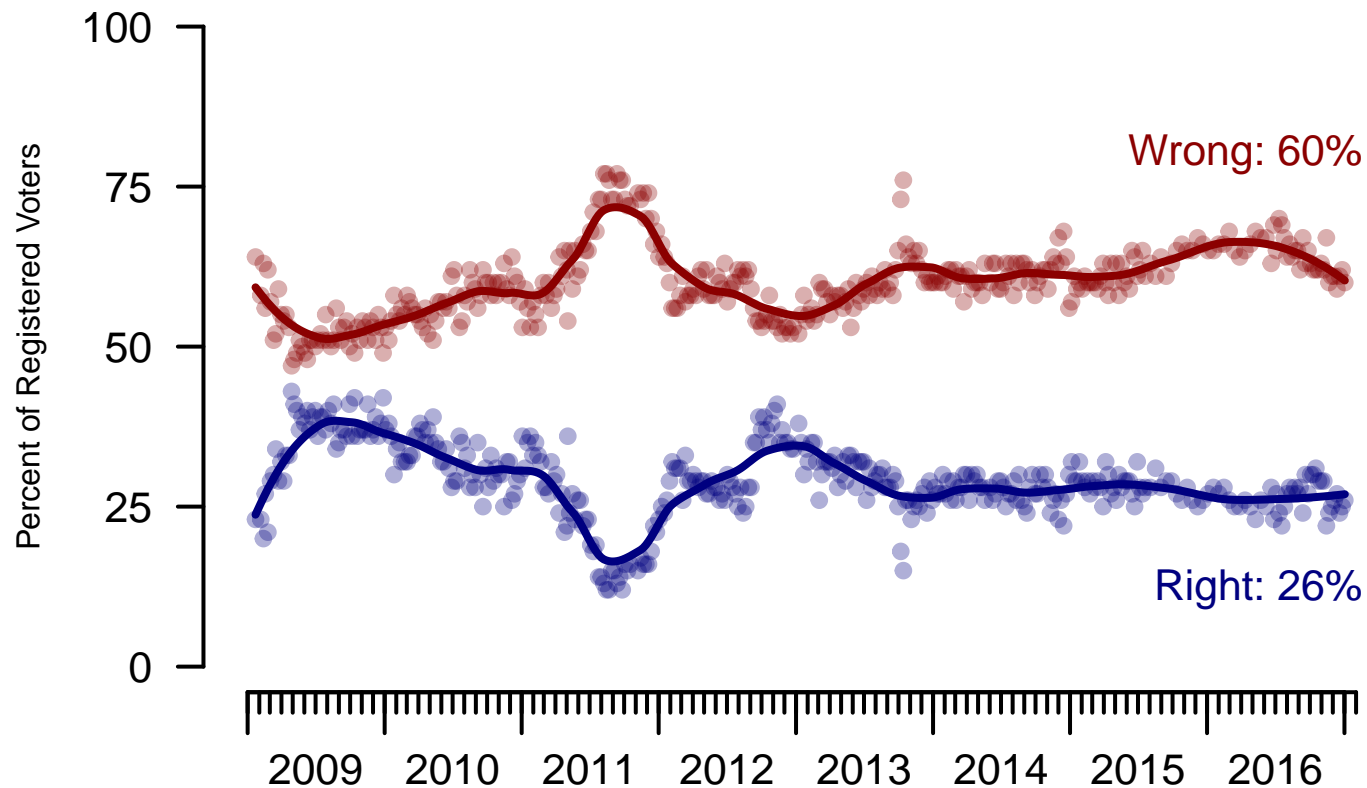


Figure 6: Direction of Country – Registered Voters

6. Direction of Country – This Week – All Adults

Would you say things in this country today are...

	Age (4 category)					Race			Census Region			
	Total	Under 30	30-44	45-64	65+	White	Black	Hispanic	North-east	Mid-west	South	West
Generally headed in the right direction	26%	29%	22%	26%	28%	26%	23%	30%	25%	22%	27%	28%
Off on the wrong track	57%	53%	59%	59%	55%	59%	54%	48%	53%	63%	57%	56%
Not sure	17%	18%	19%	15%	17%	15%	23%	22%	22%	14%	16%	16%
Totals (Unweighted N)	100% (1,647)	100% (325)	100% (432)	100% (635)	100% (255)	100% (1,284)	100% (190)	100% (173)	100% (313)	100% (401)	100% (566)	100% (347)

	Party ID			Ideology			Gender		Family Income (3 category)				
	Total	Dem	Ind	Rep	Lib	Mod	Con	Male	Female	Under 50	50-100	100+	Prefer not to say
Generally headed in the right direction	26%	26%	19%	37%	29%	20%	33%	32%	20%	26%	28%	32%	18%
Off on the wrong track	57%	56%	58%	57%	60%	55%	58%	52%	62%	57%	61%	47%	58%
Not sure	17%	17%	23%	6%	11%	26%	9%	16%	18%	18%	11%	21%	24%
Totals (Unweighted N)	100% (1,647)	100% (631)	100% (633)	100% (383)	100% (493)	100% (672)	100% (482)	100% (763)	100% (884)	100% (823)	100% (451)	100% (195)	100% (178)

The Economist/YouGov Poll
December 31, 2016 - January 3, 2017



Sponsorship	<i>The Economist</i>
Fieldwork	YouGov
Interviewing Dates	December 31, 2016 - January 3, 2017
Target population	U.S. citizens, aged 18 and over.
Sampling method	Respondents were selected from YouGov's opt-in Internet panel using sample matching. A random sample (stratified by age, gender, race, education, and region) was selected from the 2014 American Community Study. Voter registration was imputed from the November 2014 Current Population Survey Registration and Voting Supplement.
Weighting	The sample was weighted based on age, gender, race, education, and 2016 Presidential vote. The weights range from 0.17 to 4.66, with a mean of one and a standard deviation of 0.7.
Number of respondents	1647
Margin of error	± 3% (adjusted for weighting)
Margin of error (Registered Voters)	± 3.3% (adjusted for weighting)
Survey mode	Web-based interviews
Full results	Available online at http://today.yougov.com/news/categories/economist/ .