

Interviewing: January 8 - 9, 2018  
Sample: 1500 Adults nationwide online  
1016 registered voters nationwide online



# *The Economist/YouGov* Poll

## Weekly Tracking

For immediate release

**1. Presidential Job Approval – Historical**

Do you approve or disapprove of the way [President's name] is handling his job as President?

	All Adults						
	Total Approve	Total Disapprove	Strongly Approve	Somewhat Approve	Somewhat Disapprove	Strongly Disapprove	Not Sure
January 5-9, 2018	38%	51%	21%	17%	9%	42%	10%
December 29, 2017 - January 2, 2018	38%	52%	21%	17%	12%	40%	9%
December 22-26, 2017	38%	52%	22%	16%	10%	42%	9%
December 16-18, 2017	38%	52%	20%	18%	12%	40%	10%
December 9-11, 2017	38%	51%	20%	18%	9%	42%	12%
December 2-4, 2017	37%	51%	20%	17%	11%	40%	11%
November 25-27, 2017	39%	53%	19%	20%	12%	41%	8%
November 18-20, 2017	37%	54%	18%	19%	13%	41%	9%
November 11-13, 2017	34%	55%	17%	17%	12%	43%	11%
November 4-6, 2017	37%	54%	18%	19%	11%	43%	9%
One Year Ago	49%	43%	26%	23%	12%	31%	9%

	Registered Voters						
	Total Approve	Total Disapprove	Strongly Approve	Somewhat Approve	Somewhat Disapprove	Strongly Disapprove	Not Sure
January 5-9, 2018	42%	54%	26%	16%	9%	45%	4%
December 29, 2017 - January 2, 2018	43%	54%	26%	17%	10%	44%	3%
December 22-26, 2017	43%	53%	26%	17%	8%	45%	4%
December 16-18, 2017	41%	55%	25%	16%	9%	46%	3%
December 9-11, 2017	41%	54%	23%	18%	9%	45%	4%
December 2-4, 2017	43%	52%	23%	20%	9%	43%	5%
November 25-27, 2017	43%	53%	23%	20%	9%	44%	4%
November 18-20, 2017	40%	55%	20%	20%	11%	44%	5%
November 11-13, 2017	39%	56%	21%	18%	11%	45%	5%
November 4-6, 2017	40%	55%	22%	18%	10%	45%	5%
One Year Ago	51%	46%	29%	22%	12%	34%	4%

## Presidential Job Approval

"Do you approve or disapprove of the way Donald Trump is handling his job as President?"

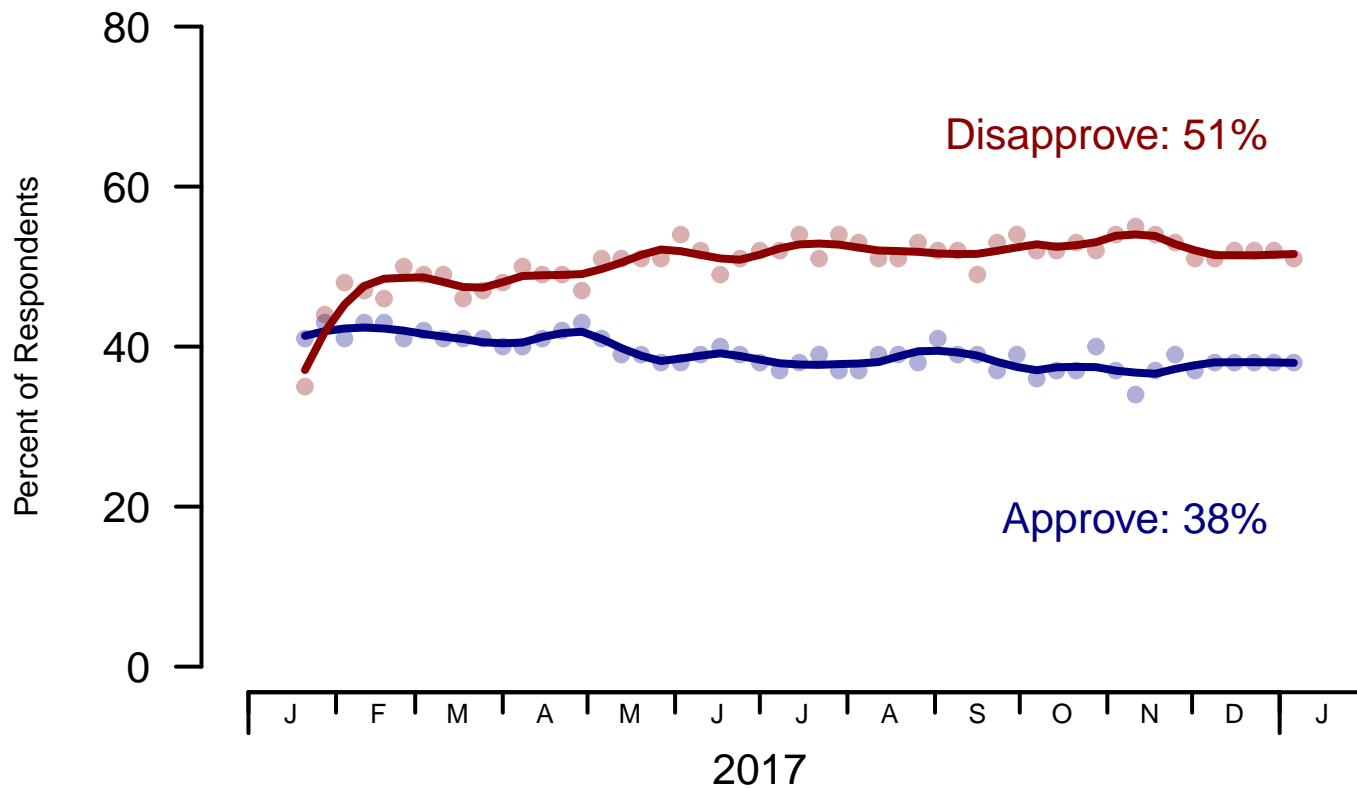


Figure 1: Trump Approval – All Adults

## Presidential Job Approval

"Do you approve or disapprove of the way Donald Trump is handling his job as President?"

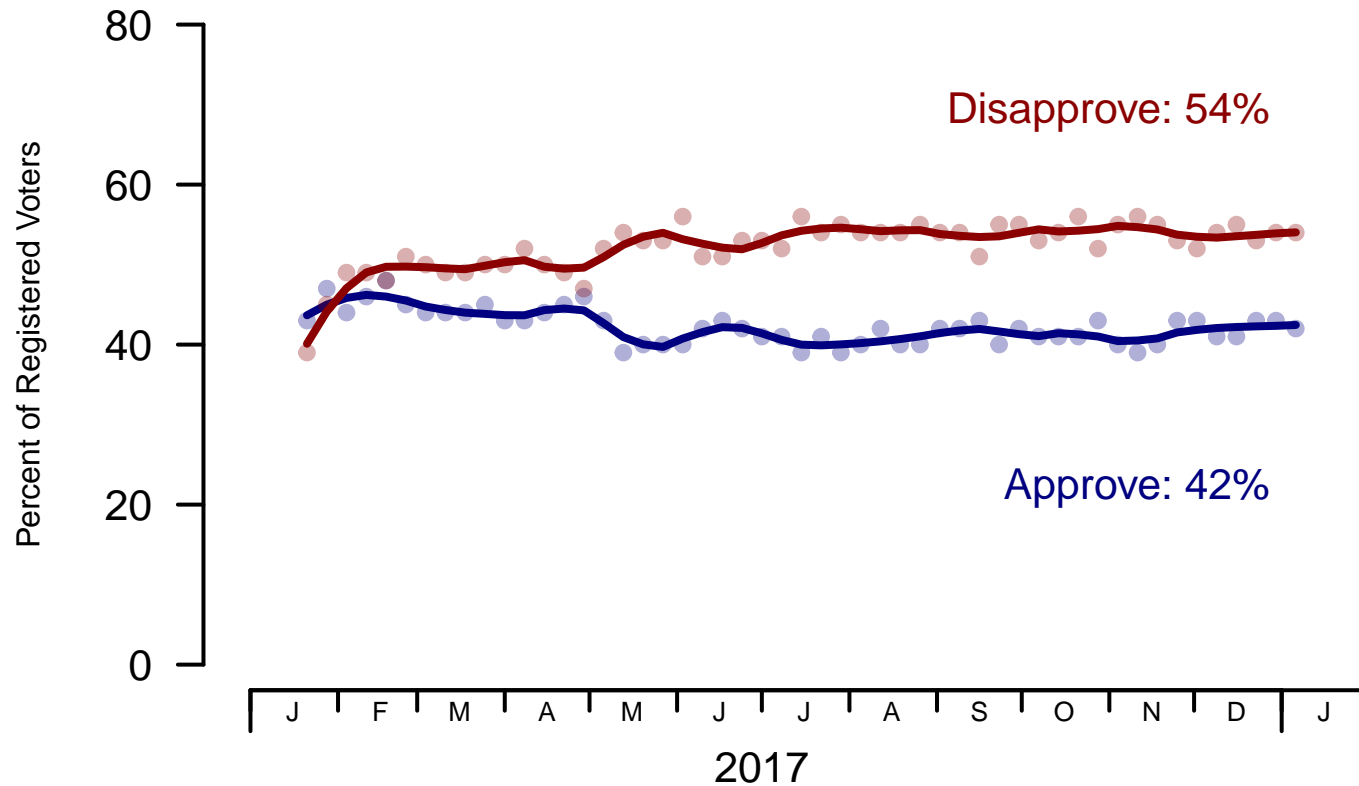


Figure 2: Trump Approval – Registered Voters

**2. President Trump Job Approval – This Week – All Adults**

Do you approve or disapprove of the way Donald Trump is handling his job as President?

	Age (4 category)					Race			Census Region			
	Total	Under 30	30-44	45-64	65+	White	Black	Hispanic	North-east	Mid-west	South	West
Strongly approve	21%	8%	11%	26%	38%	25%	5%	13%	19%	23%	22%	21%
Somewhat approve	17%	9%	21%	20%	15%	20%	7%	9%	15%	18%	19%	12%
Somewhat disapprove	9%	12%	8%	9%	8%	9%	13%	11%	7%	12%	9%	11%
Strongly disapprove	42%	55%	39%	40%	37%	38%	57%	51%	43%	41%	41%	46%
Not sure	10%	15%	20%	4%	1%	8%	18%	16%	16%	7%	9%	10%
Totals (Unweighted N)	100% (1,500)	100% (188)	100% (427)	100% (576)	100% (309)	100% (1,172)	100% (179)	100% (149)	100% (309)	100% (351)	100% (605)	100% (235)

	Party ID			Ideology			Gender		Family Income (3 category)			Prefer not to say	
	Total	Dem	Ind	Rep	Lib	Mod	Con	Male	Female	Under 50	50-100		100+
Strongly approve	21%	4%	17%	53%	2%	10%	51%	25%	18%	16%	26%	19%	30%
Somewhat approve	17%	5%	19%	30%	3%	17%	28%	17%	17%	20%	17%	18%	8%
Somewhat disapprove	9%	11%	9%	8%	7%	13%	6%	9%	10%	12%	8%	8%	6%
Strongly disapprove	42%	77%	36%	7%	83%	41%	11%	41%	43%	41%	45%	53%	34%
Not sure	10%	4%	18%	2%	5%	18%	3%	7%	12%	11%	4%	1%	23%
Totals (Unweighted N)	100% (1,500)	100% (547)	100% (590)	100% (363)	100% (452)	100% (567)	100% (481)	100% (655)	100% (845)	100% (612)	100% (408)	100% (252)	100% (228)

**3. Approval of U.S. Congress – Historical**

Overall, do you approve or disapprove of the way that the United States Congress is handling its job?

	All Adults							
	Total Approve	Total Disapprove	Strongly Approve	Somewhat Approve	Neutral	Somewhat Disapprove	Strongly Disapprove	Not Sure
January 5-9, 2018	12%	59%	2%	10%	13%	21%	38%	16%
December 29, 2017 - January 2, 2018	14%	56%	3%	11%	16%	20%	36%	14%
December 22-26, 2017	13%	57%	3%	10%	16%	19%	38%	15%
December 16-18, 2017	12%	58%	3%	9%	15%	22%	36%	16%
December 9-11, 2017	10%	61%	2%	8%	15%	23%	38%	15%
December 2-4, 2017	12%	56%	3%	9%	15%	18%	38%	17%
November 25-27, 2017	9%	62%	3%	6%	15%	23%	39%	14%
November 18-20, 2017	10%	62%	3%	7%	16%	21%	41%	13%
November 11-13, 2017	10%	60%	2%	8%	17%	20%	40%	14%
November 4-6, 2017	10%	61%	3%	7%	15%	23%	38%	14%
One Year Ago	12%	56%	3%	9%	18%	22%	34%	15%

	Registered Voters							
	Total Approve	Total Disapprove	Strongly Approve	Somewhat Approve	Neutral	Somewhat Disapprove	Strongly Disapprove	Not Sure
January 5-9, 2018	14%	67%	2%	12%	12%	25%	42%	8%
December 29, 2017 - January 2, 2018	15%	64%	3%	12%	14%	23%	41%	6%
December 22-26, 2017	14%	64%	2%	12%	14%	21%	43%	7%
December 16-18, 2017	12%	68%	3%	9%	12%	24%	44%	8%
December 9-11, 2017	12%	69%	2%	10%	13%	27%	42%	6%
December 2-4, 2017	11%	68%	3%	8%	12%	22%	46%	9%
November 25-27, 2017	10%	70%	3%	7%	13%	24%	46%	8%
November 18-20, 2017	9%	69%	2%	7%	14%	23%	46%	9%
November 11-13, 2017	9%	69%	2%	7%	15%	23%	46%	8%
November 4-6, 2017	9%	68%	2%	7%	13%	23%	45%	11%
One Year Ago	12%	61%	3%	9%	17%	23%	38%	10%

### Congress Approval

"Do you approve of the way the  
U.S. Congress is handling its job?"

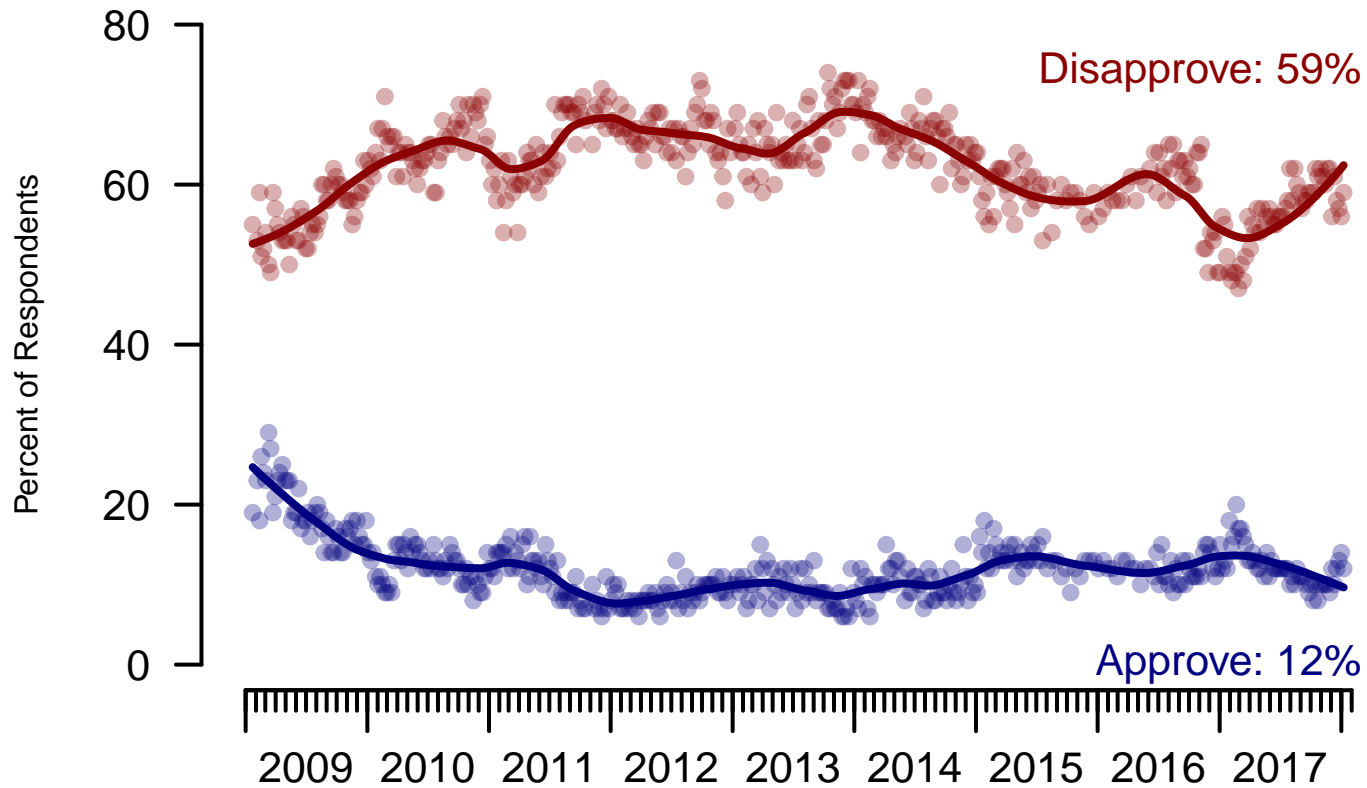


Figure 3: Congress Approval – All Adults

### Congress Approval

"Do you approve of the way the  
U.S. Congress is handling its job?"

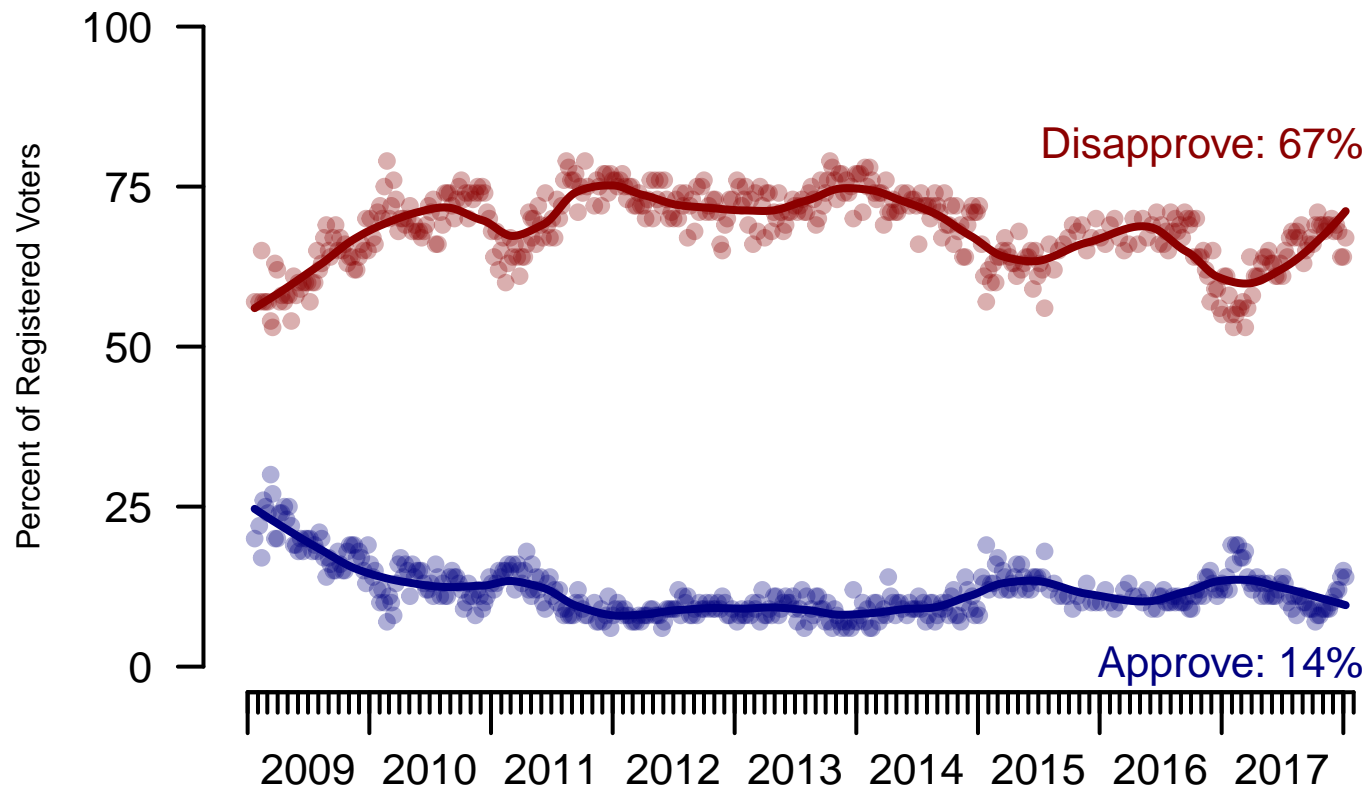


Figure 4: Congress Approval – Registered Voters



**4. Approval of U.S. Congress – This Week – All Adults**

Overall, do you approve or disapprove of the way that the United States Congress is handling its job?

	Age (4 category)					Race			Census Region			
	Total	Under 30	30-44	45-64	65+	White	Black	Hispanic	North-east	Mid-west	South	West
Strongly approve	2%	0%	3%	2%	2%	1%	3%	1%	2%	1%	2%	2%
Somewhat approve	10%	8%	9%	12%	13%	11%	4%	15%	9%	9%	12%	11%
Neither approve nor disapprove	13%	12%	18%	14%	8%	13%	15%	14%	11%	13%	15%	13%
Somewhat disapprove	21%	17%	17%	23%	25%	22%	13%	23%	21%	20%	21%	21%
Strongly disapprove	38%	39%	31%	39%	45%	38%	45%	32%	33%	40%	38%	40%
Not sure	16%	24%	23%	11%	7%	15%	20%	14%	24%	16%	13%	14%
Totals (Unweighted N)	100% (1,484)	100% (183)	100% (417)	100% (575)	100% (309)	100% (1,164)	100% (175)	100% (145)	100% (303)	100% (349)	100% (600)	100% (232)

	Party ID			Ideology			Gender		Family Income (3 category)				
	Total	Dem	Ind	Rep	Lib	Mod	Con	Male	Female	Under 50	50-100	100+	Prefer not to say
Strongly approve	2%	1%	1%	3%	1%	1%	4%	2%	2%	2%	1%	1%	0%
Somewhat approve	10%	4%	8%	25%	3%	8%	20%	10%	11%	10%	12%	9%	12%
Neither approve nor disapprove	13%	10%	13%	18%	7%	15%	16%	13%	14%	17%	13%	8%	8%
Somewhat disapprove	21%	20%	17%	28%	16%	15%	31%	22%	20%	19%	24%	29%	15%
Strongly disapprove	38%	56%	37%	17%	63%	36%	22%	45%	32%	33%	40%	48%	41%
Not sure	16%	9%	25%	8%	10%	25%	8%	8%	22%	20%	9%	5%	24%
Totals (Unweighted N)	100% (1,484)	100% (545)	100% (577)	100% (362)	100% (451)	100% (556)	100% (477)	100% (650)	100% (834)	100% (604)	100% (405)	100% (252)	100% (223)

**5. Direction of country – Historical**

Would you say things in this country today are...

	All Adults		
	Right Direction	Wrong Track	Not Sure
January 5-9, 2018	33%	52%	15%
December 29, 2017 - January 2, 2018	33%	52%	14%
December 22-26, 2017	34%	52%	14%
December 16-18, 2017	33%	52%	15%
December 9-11, 2017	31%	53%	16%
December 2-4, 2017	29%	57%	14%
November 25-27, 2017	30%	54%	16%
November 18-20, 2017	31%	56%	14%
November 11-13, 2017	27%	57%	16%
November 4-6, 2017	27%	60%	13%
One Year Ago	25%	58%	16%

	Registered Voters		
	Right Direction	Wrong Track	Not Sure
January 5-9, 2018	38%	52%	11%
December 29, 2017 - January 2, 2018	37%	53%	9%
December 22-26, 2017	37%	52%	10%
December 16-18, 2017	36%	55%	9%
December 9-11, 2017	35%	55%	10%
December 2-4, 2017	33%	57%	10%
November 25-27, 2017	31%	56%	13%
November 18-20, 2017	32%	57%	11%
November 11-13, 2017	30%	58%	12%
November 4-6, 2017	27%	62%	11%
One Year Ago	25%	60%	15%

## Direction of Country

"Would you say things in this country today are generally headed in the right direction or off on the wrong track?"

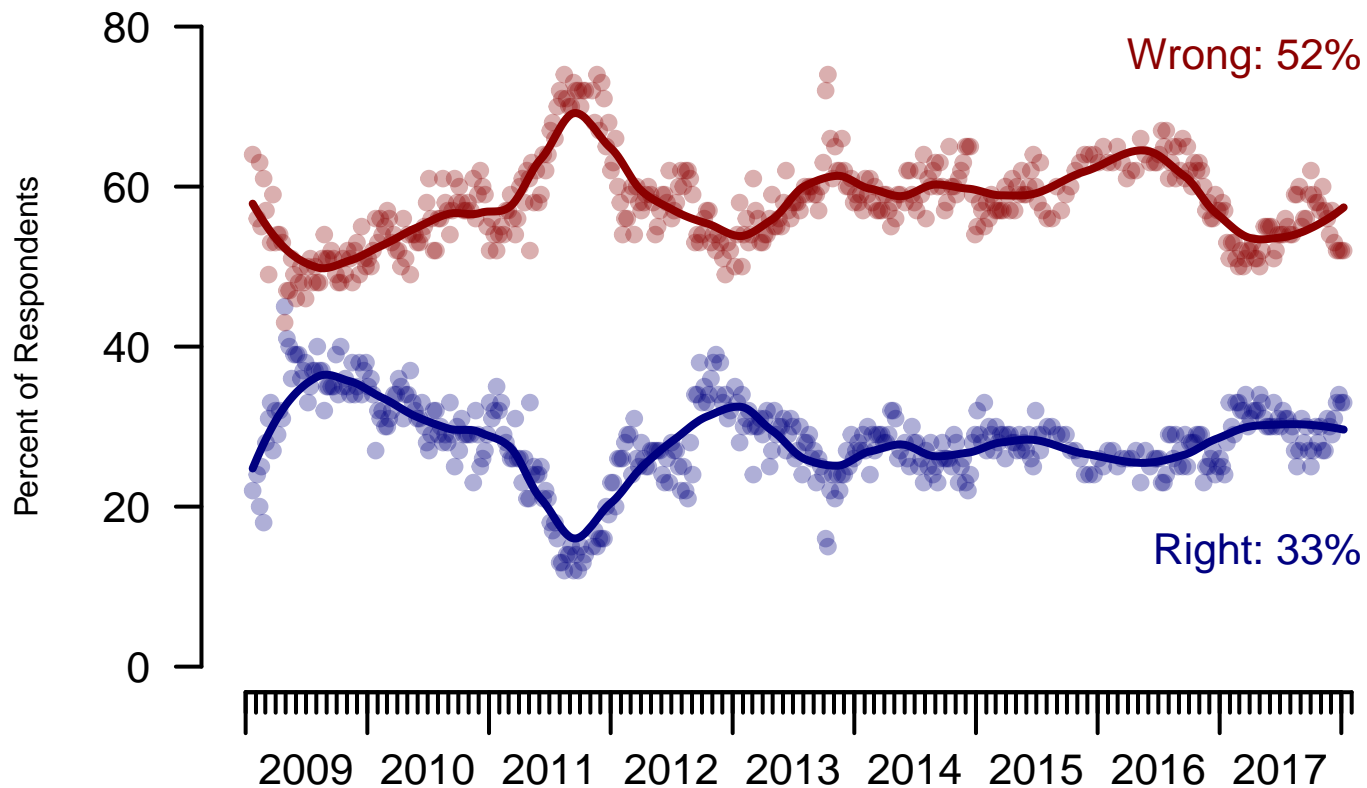


Figure 5: Direction of Country – All Adults

## Direction of Country

"Would you say things in this country today are generally headed in the right direction or off on the wrong track?"

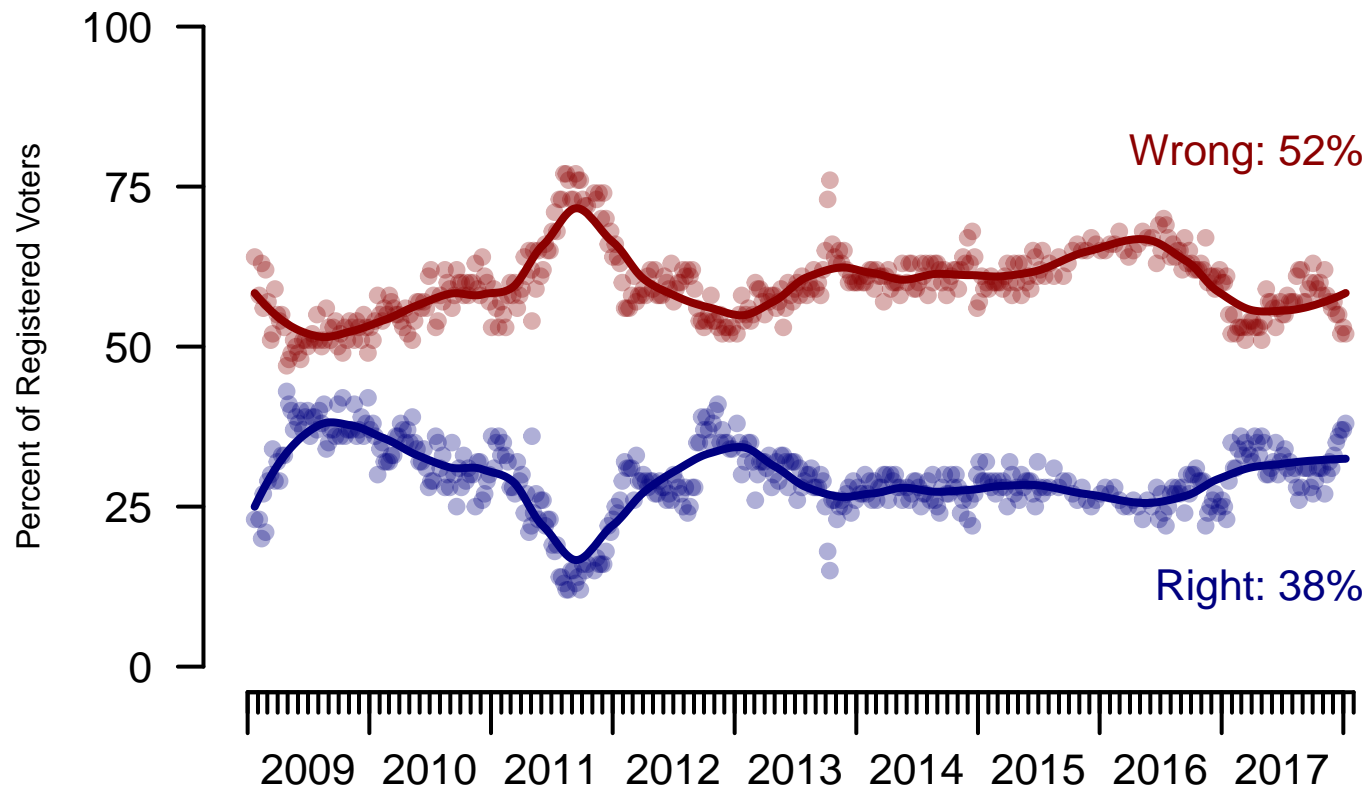


Figure 6: Direction of Country – Registered Voters

**6. Direction of Country – This Week – All Adults**

Would you say things in this country today are...

	Age (4 category)					Race			Census Region			
	Total	Under 30	30-44	45-64	65+	White	Black	Hispanic	North-east	Mid-west	South	West
Generally headed in the right direction	33%	21%	27%	37%	44%	37%	18%	21%	32%	30%	34%	34%
Off on the wrong track	52%	61%	52%	52%	44%	49%	65%	62%	53%	57%	49%	52%
Not sure	15%	18%	21%	11%	11%	14%	17%	17%	15%	13%	16%	14%
Totals (Unweighted N)	100% (1,500)	100% (188)	100% (427)	100% (576)	100% (309)	100% (1,172)	100% (179)	100% (149)	100% (309)	100% (351)	100% (605)	100% (235)

	Party ID			Ideology			Gender		Family Income (3 category)				
	Total	Dem	Ind	Rep	Lib	Mod	Con	Male	Female	Under 50	50-100	100+	Prefer not to say
Generally headed in the right direction	33%	12%	30%	68%	9%	22%	66%	40%	26%	29%	38%	32%	37%
Off on the wrong track	52%	79%	49%	22%	81%	56%	25%	49%	56%	54%	53%	61%	38%
Not sure	15%	10%	21%	10%	10%	22%	9%	11%	18%	17%	8%	7%	25%
Totals (Unweighted N)	100% (1,500)	100% (547)	100% (590)	100% (363)	100% (452)	100% (567)	100% (481)	100% (655)	100% (845)	100% (612)	100% (408)	100% (252)	100% (228)

**The Economist/YouGov Poll**  
January 8 - 9, 2018



<b>Sponsorship</b>	<i>The Economist</i>
<b>Fieldwork</b>	YouGov
<b>Interviewing Dates</b>	January 8 - 9, 2018
<b>Target population</b>	U.S. citizens, aged 18 and over.
<b>Sampling method</b>	Respondents were selected from YouGov's opt-in Internet panel using sample matching. A random sample (stratified by age, gender, race, education, and region) was selected from the 2014 American Community Study. Voter registration was imputed from the November 2014 Current Population Survey Registration and Voting Supplement.
<b>Weighting</b>	The sample was weighted based on age, gender, race, education, and 2016 Presidential vote. The weights range from 0.14 to 6.48, with a mean of one and a standard deviation of 0.8.
<b>Number of respondents</b>	1500
<b>Margin of error</b>	± 3.3% (adjusted for weighting)
<b>Margin of error (Registered Voters)</b>	± 3.3% (adjusted for weighting)
<b>Survey mode</b>	Web-based interviews
<b>Full results</b>	Available online at <a href="http://today.yougov.com/news/categories/economist/">http://today.yougov.com/news/categories/economist/</a> .