

Interviewing: April 15 - 18, 2017  
Sample: 1500 Adults nationwide online  
1143 registered voters nationwide online



# *The Economist/YouGov* Poll

## Weekly Tracking

For immediate release

**1. Presidential Job Approval – Historical**

Do you approve or disapprove of the way [President's name] is handling his job as President?

	All Adults						
	Total Approve	Total Disapprove	Strongly Approve	Somewhat Approve	Somewhat Disapprove	Strongly Disapprove	Not Sure
April 14-18, 2017	41%	49%	22%	19%	13%	36%	11%
April 7-11, 2017	40%	50%	22%	18%	13%	37%	10%
March 31-April 4, 2017	40%	48%	21%	19%	11%	37%	11%
March 25-27, 2017	41%	47%	19%	22%	11%	36%	11%
March 18-20, 2017	41%	46%	22%	19%	10%	36%	12%
March 11-13, 2017	41%	49%	20%	21%	14%	35%	11%
March 4-6, 2017	42%	49%	23%	19%	10%	39%	9%
February 25-27, 2017	41%	50%	23%	18%	13%	37%	9%
February 18-20, 2017	43%	46%	23%	20%	9%	37%	11%
February 11-13, 2017	43%	47%	23%	20%	9%	38%	10%
One Year Ago	47%	51%	22%	25%	13%	38%	3%

	Registered Voters						
	Total Approve	Total Disapprove	Strongly Approve	Somewhat Approve	Somewhat Disapprove	Strongly Disapprove	Not Sure
April 14-18, 2017	44%	50%	24%	20%	13%	37%	7%
April 7-11, 2017	43%	52%	25%	18%	11%	41%	6%
March 31-April 4, 2017	43%	50%	23%	20%	11%	39%	8%
March 25-27, 2017	45%	50%	21%	24%	11%	39%	4%
March 18-20, 2017	44%	49%	25%	19%	10%	39%	7%
March 11-13, 2017	44%	49%	23%	21%	11%	38%	6%
March 4-6, 2017	44%	50%	26%	18%	10%	40%	6%
February 25-27, 2017	45%	51%	28%	17%	10%	41%	4%
February 18-20, 2017	48%	48%	28%	20%	8%	40%	5%
February 11-13, 2017	46%	49%	27%	19%	8%	41%	5%
One Year Ago	45%	53%	23%	22%	10%	43%	2%

## Presidential Job Approval

"Do you approve or disapprove of the way Donald Trump is handling his job as President?"

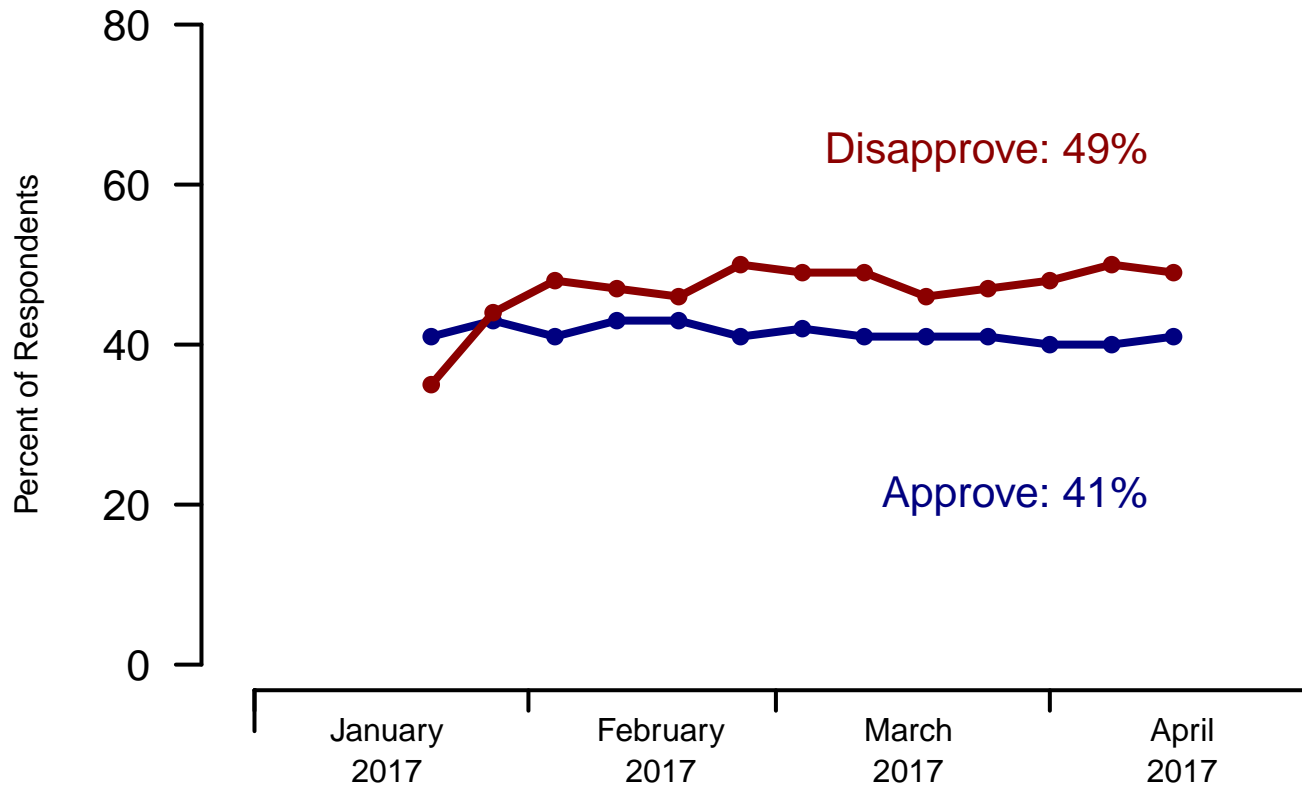


Figure 1: Trump Approval – All Adults

## Presidential Job Approval

"Do you approve or disapprove of the way Donald Trump is handling his job as President?"

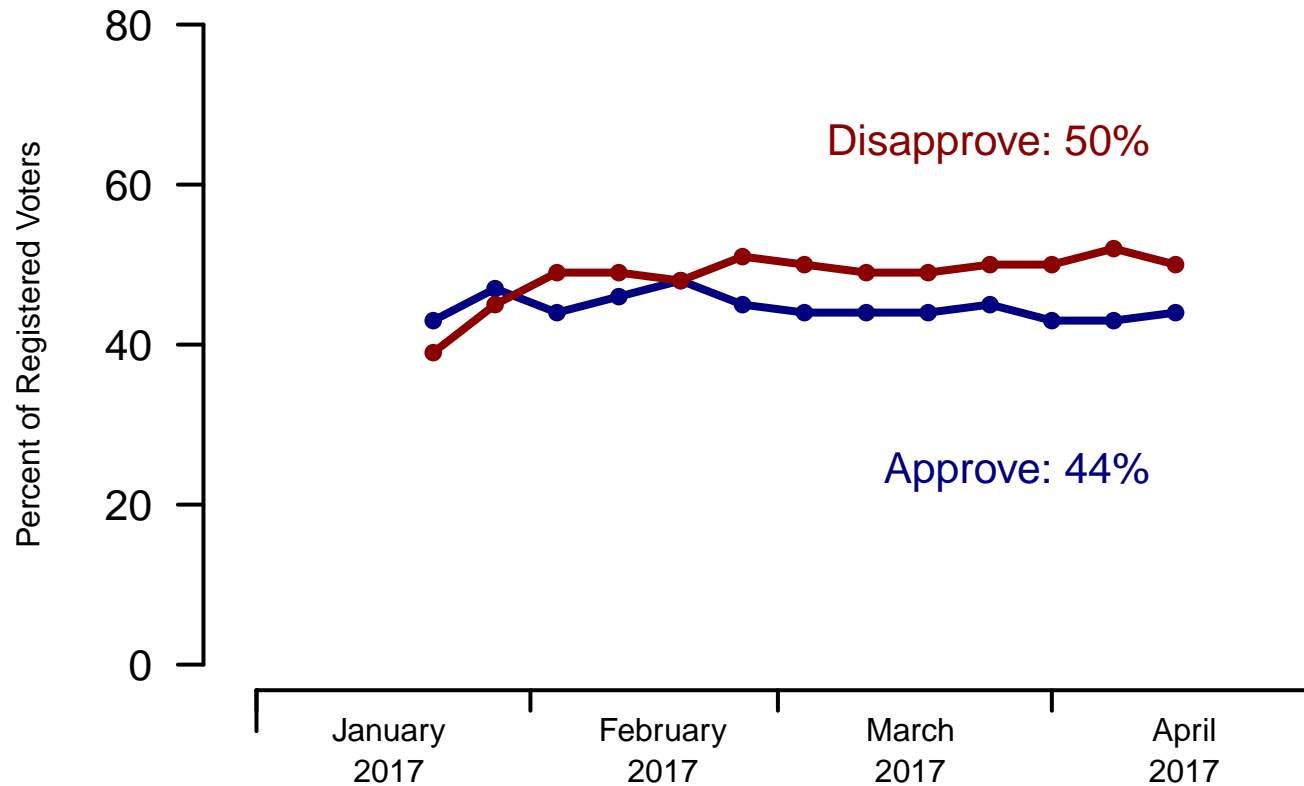


Figure 2: Trump Approval – Registered Voters

**2. President Trump Job Approval – This Week – All Adults**

Do you approve or disapprove of the way Donald Trump is handling his job as President?

	Age (4 category)					Race			Census Region			
	Total	Under 30	30-44	45-64	65+	White	Black	Hispanic	North-east	Mid-west	South	West
Strongly approve	22%	8%	15%	27%	34%	27%	5%	8%	22%	23%	23%	17%
Somewhat approve	19%	19%	21%	18%	21%	20%	12%	19%	20%	23%	18%	17%
Somewhat disapprove	13%	22%	10%	11%	9%	11%	14%	20%	11%	11%	12%	17%
Strongly disapprove	36%	35%	37%	37%	32%	32%	55%	39%	34%	36%	35%	38%
Not sure	11%	15%	17%	7%	4%	10%	14%	15%	12%	8%	12%	10%
Totals (Unweighted N)	100% (1,500)	100% (272)	100% (407)	100% (569)	100% (252)	100% (1,203)	100% (167)	100% (130)	100% (349)	100% (326)	100% (518)	100% (307)

	Party ID			Ideology			Gender		Family Income (3 category)			Prefer not to say	
	Total	Dem	Ind	Rep	Lib	Mod	Con	Male	Female	Under 50	50-100		100+
Strongly approve	22%	4%	18%	51%	2%	12%	50%	25%	19%	21%	24%	19%	22%
Somewhat approve	19%	11%	20%	28%	5%	23%	25%	20%	19%	18%	22%	25%	16%
Somewhat disapprove	13%	19%	11%	7%	15%	15%	9%	14%	11%	12%	13%	17%	10%
Strongly disapprove	36%	62%	33%	6%	75%	31%	12%	32%	39%	37%	33%	39%	35%
Not sure	11%	4%	18%	8%	3%	20%	4%	9%	13%	12%	8%	1%	17%
Totals (Unweighted N)	100% (1,500)	100% (583)	100% (575)	100% (342)	100% (478)	100% (593)	100% (429)	100% (677)	100% (823)	100% (710)	100% (429)	100% (178)	100% (183)

**3. Approval of U.S. Congress – Historical**

Overall, do you approve or disapprove of the way that the United States Congress is handling its job?

All Adults								
	<b>Total Approve</b>	<b>Total Disapprove</b>	Strongly Approve	Somewhat Approve	Neutral	Somewhat Disapprove	Strongly Disapprove	Not Sure
April 14-18, 2017	13%	54%	4%	9%	17%	21%	33%	15%
April 7-11, 2017	14%	55%	3%	11%	17%	21%	34%	14%
March 31-April 4, 2017	13%	52%	3%	10%	19%	24%	28%	17%
March 25-27, 2017	13%	56%	3%	10%	16%	25%	31%	15%
March 18-20, 2017	15%	51%	4%	11%	17%	20%	31%	16%
March 11-13, 2017	16%	48%	3%	13%	20%	19%	29%	15%
March 4-6, 2017	17%	50%	5%	12%	19%	19%	31%	15%
February 25-27, 2017	17%	47%	3%	14%	21%	18%	29%	15%
February 18-20, 2017	20%	49%	5%	15%	17%	19%	30%	15%
February 11-13, 2017	16%	49%	3%	13%	18%	19%	30%	16%
One Year Ago	12%	61%	3%	9%	17%	21%	40%	10%

Registered Voters								
	<b>Total Approve</b>	<b>Total Disapprove</b>	Strongly Approve	Somewhat Approve	Neutral	Somewhat Disapprove	Strongly Disapprove	Not Sure
April 14-18, 2017	14%	61%	4%	10%	15%	24%	37%	11%
April 7-11, 2017	13%	61%	3%	10%	15%	22%	39%	10%
March 31-April 4, 2017	12%	58%	3%	9%	17%	26%	32%	13%
March 25-27, 2017	13%	64%	3%	10%	15%	27%	37%	8%
March 18-20, 2017	14%	56%	3%	11%	18%	21%	35%	11%
March 11-13, 2017	18%	53%	3%	15%	17%	20%	33%	11%
March 4-6, 2017	17%	57%	5%	12%	17%	23%	34%	11%
February 25-27, 2017	17%	56%	3%	14%	18%	21%	35%	8%
February 18-20, 2017	19%	56%	5%	14%	15%	20%	36%	9%
February 11-13, 2017	19%	55%	4%	15%	17%	21%	34%	10%
One Year Ago	11%	70%	3%	8%	13%	24%	46%	5%

### Congress Approval

"Do you approve of the way the U.S. Congress is handling its job?"

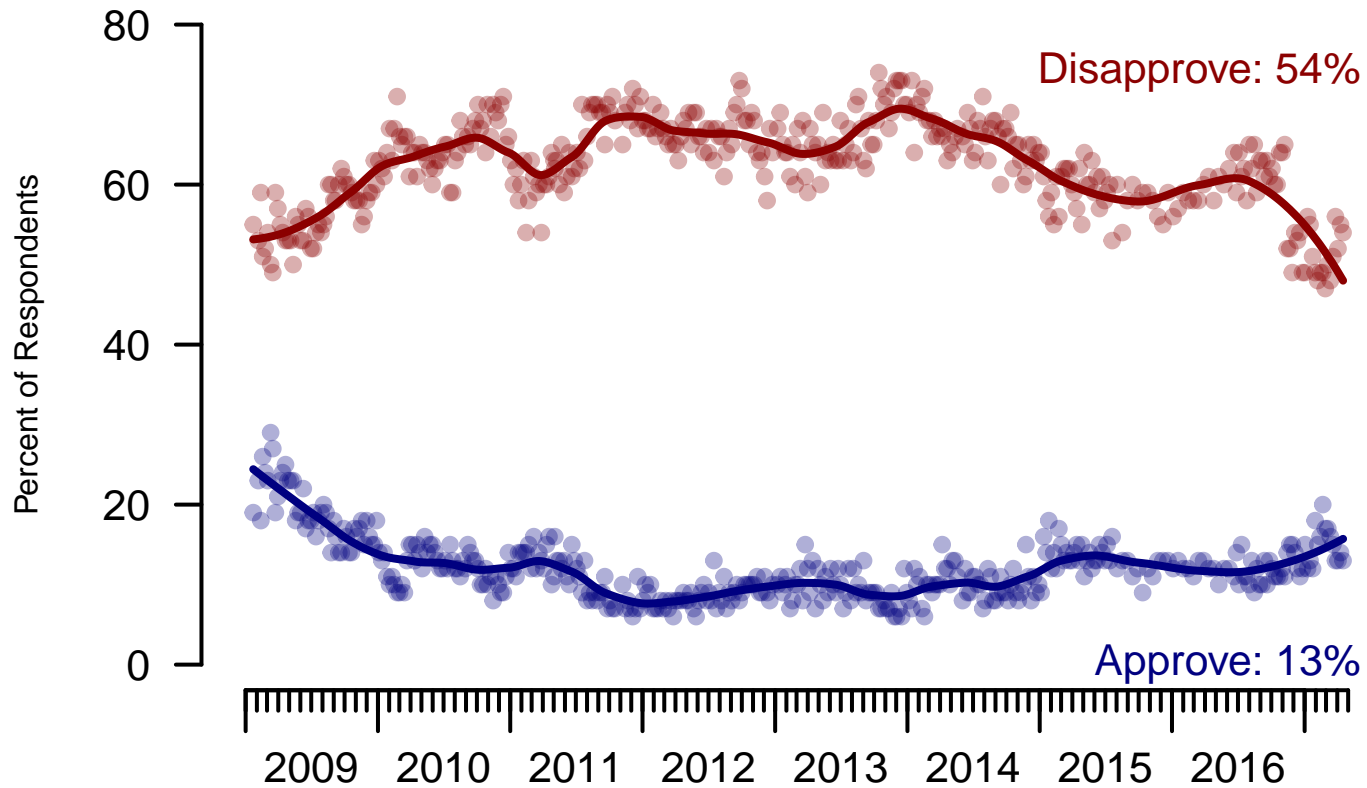


Figure 3: Congress Approval – All Adults

## Congress Approval

"Do you approve of the way the  
U.S. Congress is handling its job?"

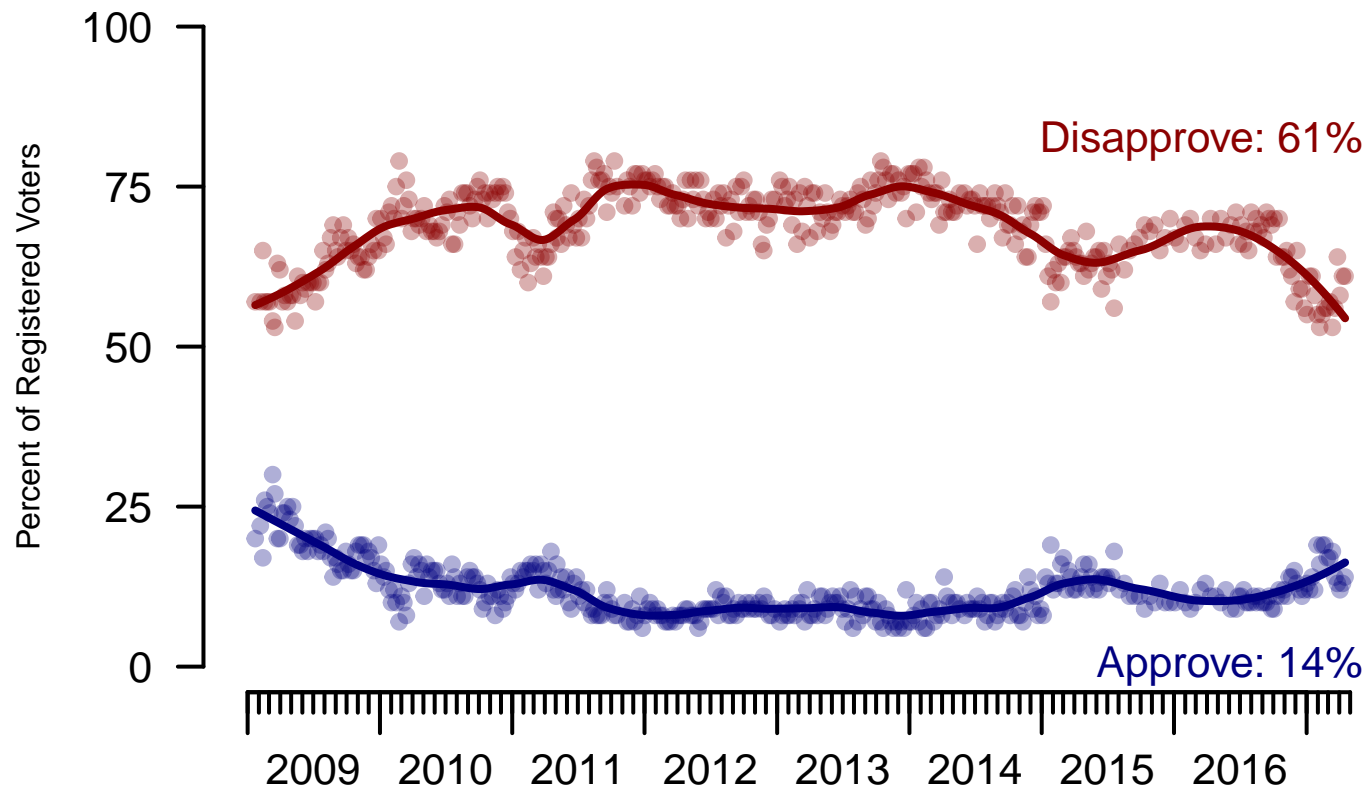


Figure 4: Congress Approval – Registered Voters



**4. Approval of U.S. Congress – This Week – All Adults**

Overall, do you approve or disapprove of the way that the United States Congress is handling its job?

	Age (4 category)					Race			Census Region			
	Total	Under 30	30-44	45-64	65+	White	Black	Hispanic	North-east	Mid-west	South	West
Strongly approve	4%	5%	6%	3%	0%	4%	2%	2%	4%	3%	3%	4%
Somewhat approve	9%	9%	8%	9%	11%	10%	8%	6%	11%	9%	8%	9%
Neither approve nor disapprove	17%	26%	15%	17%	12%	16%	17%	25%	19%	17%	19%	14%
Somewhat disapprove	21%	17%	21%	22%	25%	23%	20%	13%	20%	27%	22%	16%
Strongly disapprove	33%	22%	29%	36%	46%	33%	35%	32%	31%	32%	33%	39%
Not sure	15%	22%	20%	13%	6%	14%	17%	22%	15%	12%	16%	19%
Totals (Unweighted N)	100% (1,492)	100% (269)	100% (403)	100% (568)	100% (252)	100% (1,199)	100% (165)	100% (128)	100% (347)	100% (325)	100% (515)	100% (305)

	Party ID			Ideology			Gender		Family Income (3 category)				
	Total	Dem	Ind	Rep	Lib	Mod	Con	Male	Female	Under 50	50-100	100+	Prefer not to say
Strongly approve	4%	4%	1%	8%	3%	3%	5%	5%	2%	4%	3%	4%	2%
Somewhat approve	9%	5%	7%	18%	3%	7%	16%	9%	9%	8%	12%	5%	10%
Neither approve nor disapprove	17%	20%	16%	15%	15%	18%	19%	17%	18%	23%	14%	10%	11%
Somewhat disapprove	21%	21%	19%	26%	19%	18%	27%	21%	22%	18%	24%	32%	20%
Strongly disapprove	33%	41%	35%	20%	54%	28%	25%	38%	29%	29%	37%	43%	33%
Not sure	15%	9%	22%	13%	5%	26%	8%	11%	20%	18%	11%	6%	23%
Totals (Unweighted N)	100% (1,492)	100% (580)	100% (570)	100% (342)	100% (477)	100% (589)	100% (426)	100% (675)	100% (817)	100% (705)	100% (429)	100% (178)	100% (180)

**5. Direction of country – Historical**

Would you say things in this country today are...

	All Adults		
	Right Direction	Wrong Track	Not Sure
April 14-18, 2017	32%	51%	16%
April 7-11, 2017	32%	53%	15%
March 31-April 4, 2017	31%	52%	18%
March 25-27, 2017	30%	52%	18%
March 18-20, 2017	34%	51%	15%
March 11-13, 2017	32%	50%	18%
March 4-6, 2017	32%	52%	17%
February 25-27, 2017	33%	50%	17%
February 18-20, 2017	33%	51%	16%
February 11-13, 2017	29%	53%	18%
One Year Ago	26%	62%	11%

	Registered Voters		
	Right Direction	Wrong Track	Not Sure
April 14-18, 2017	35%	53%	12%
April 7-11, 2017	36%	53%	11%
March 31-April 4, 2017	32%	54%	14%
March 25-27, 2017	33%	54%	13%
March 18-20, 2017	34%	53%	13%
March 11-13, 2017	35%	51%	14%
March 4-6, 2017	33%	53%	14%
February 25-27, 2017	36%	53%	11%
February 18-20, 2017	34%	53%	13%
February 11-13, 2017	31%	52%	16%
One Year Ago	26%	65%	8%

## Direction of Country

"Would you say things in this country today are generally headed in the right direction or off on the wrong track?"

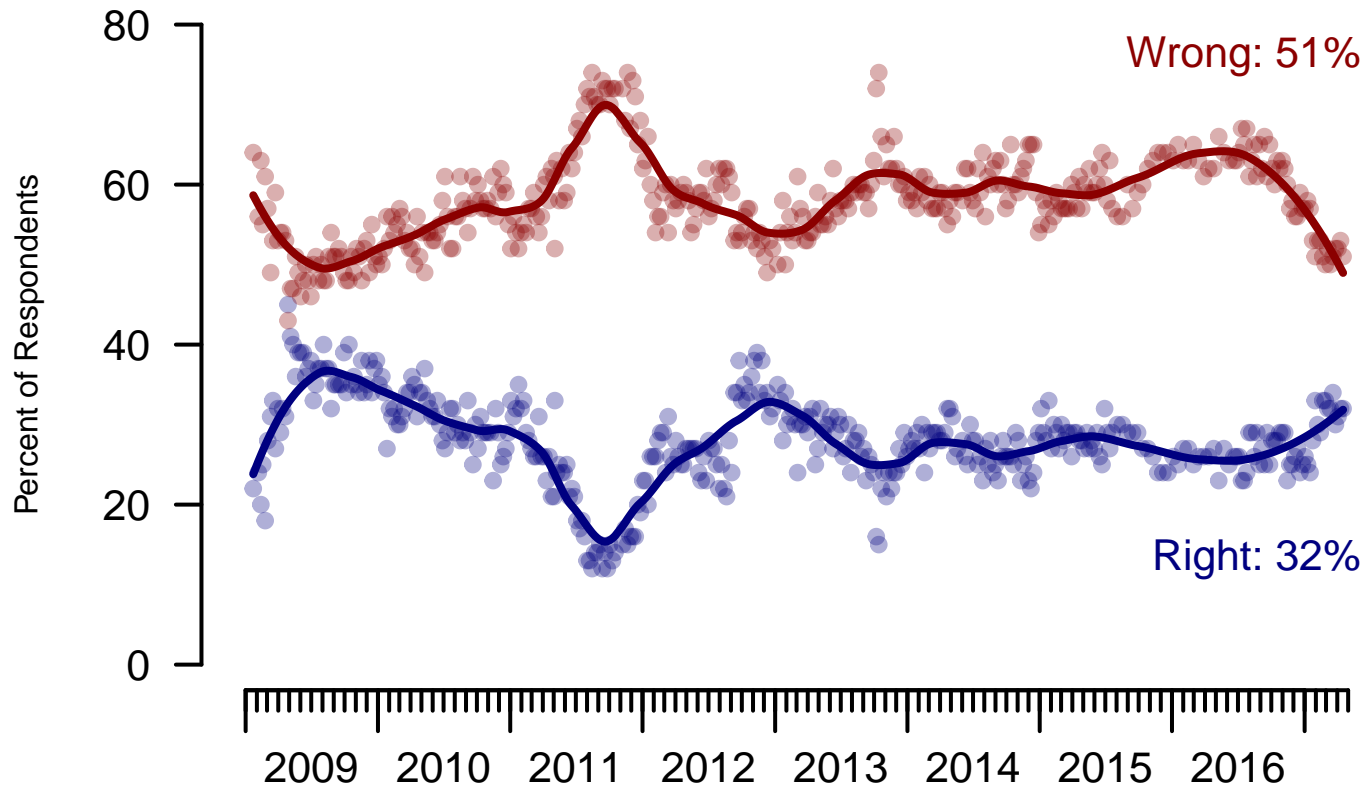


Figure 5: Direction of Country – All Adults

## Direction of Country

"Would you say things in this country today are generally headed in the right direction or off on the wrong track?"

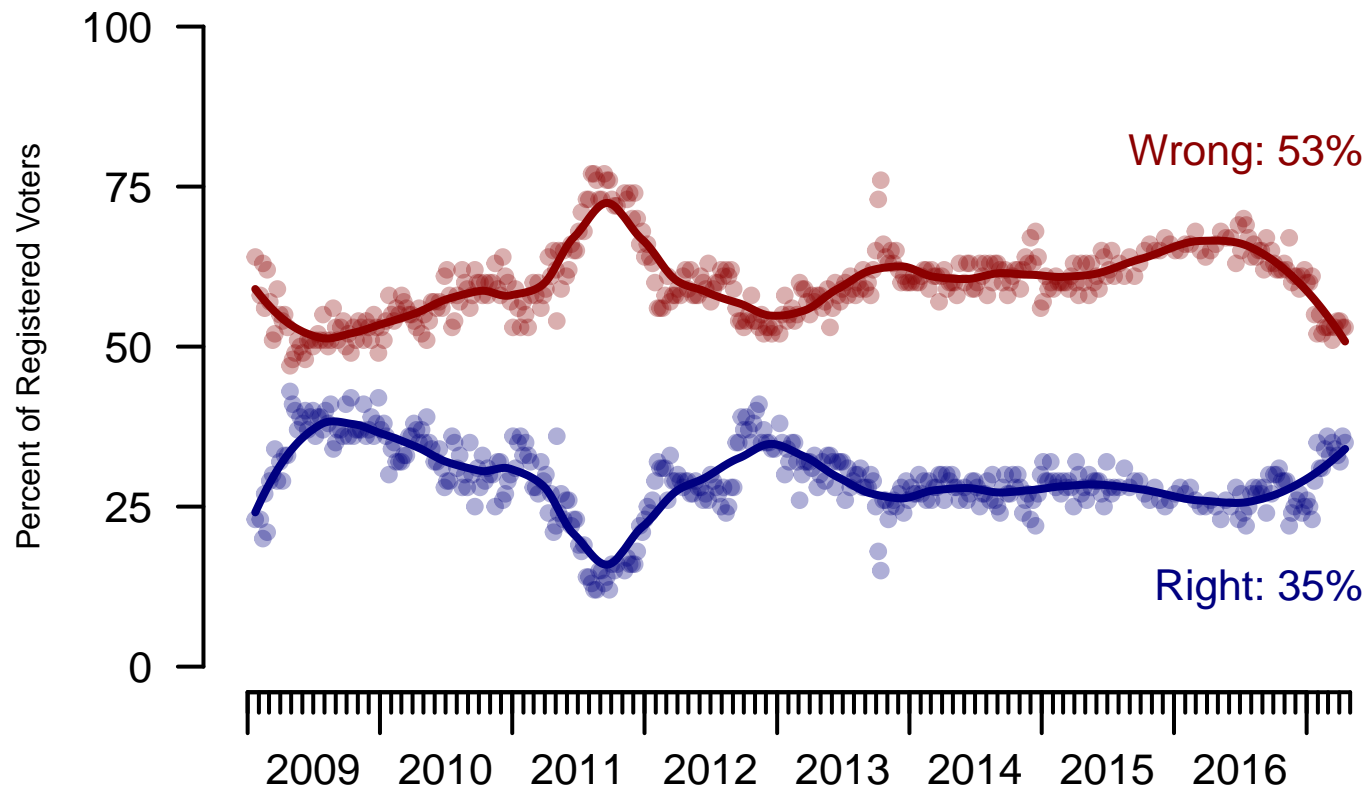


Figure 6: Direction of Country – Registered Voters

**6. Direction of Country – This Week – All Adults**

Would you say things in this country today are...

	Age (4 category)					Race			Census Region			
	Total	Under 30	30-44	45-64	65+	White	Black	Hispanic	North-east	Mid-west	South	West
Generally headed in the right direction	32%	27%	26%	33%	43%	37%	14%	23%	33%	34%	33%	29%
Off on the wrong track	51%	57%	52%	53%	42%	48%	65%	58%	47%	53%	50%	56%
Not sure	16%	16%	22%	14%	15%	15%	21%	19%	19%	12%	18%	16%
Totals (Unweighted N)	100% (1,500)	100% (272)	100% (407)	100% (569)	100% (252)	100% (1,203)	100% (167)	100% (130)	100% (349)	100% (326)	100% (518)	100% (307)

	Party ID			Ideology			Gender		Family Income (3 category)				
	Total	Dem	Ind	Rep	Lib	Mod	Con	Male	Female	Under 50	50-100	100+	Prefer not to say
Generally headed in the right direction	32%	18%	25%	64%	12%	26%	56%	40%	25%	31%	37%	35%	24%
Off on the wrong track	51%	72%	52%	22%	82%	49%	31%	47%	55%	52%	51%	50%	47%
Not sure	16%	10%	23%	14%	7%	25%	13%	13%	20%	16%	11%	15%	28%
Totals (Unweighted N)	100% (1,500)	100% (583)	100% (575)	100% (342)	100% (478)	100% (593)	100% (429)	100% (677)	100% (823)	100% (710)	100% (429)	100% (178)	100% (183)

**The Economist/YouGov Poll**  
April 15 - 18, 2017



<b>Sponsorship</b>	<i>The Economist</i>
<b>Fieldwork</b>	YouGov
<b>Interviewing Dates</b>	April 15 - 18, 2017
<b>Target population</b>	U.S. citizens, aged 18 and over.
<b>Sampling method</b>	Respondents were selected from YouGov's opt-in Internet panel using sample matching. A random sample (stratified by age, gender, race, education, and region) was selected from the 2014 American Community Study. Voter registration was imputed from the November 2014 Current Population Survey Registration and Voting Supplement.
<b>Weighting</b>	The sample was weighted based on age, gender, race, education, and 2016 Presidential vote. The weights range from 0.21 to 6.01, with a mean of one and a standard deviation of 0.7.
<b>Number of respondents</b>	1500
<b>Margin of error</b>	± 3.1% (adjusted for weighting)
<b>Margin of error (Registered Voters)</b>	± 3.5% (adjusted for weighting)
<b>Survey mode</b>	Web-based interviews
<b>Full results</b>	Available online at <a href="http://today.yougov.com/news/categories/economist/">http://today.yougov.com/news/categories/economist/</a> .