

Interviewing: February 25 - 28, 2018  
Sample: 1500 Adults nationwide online  
1005 registered voters nationwide online



# *The Economist/YouGov* Poll

## Weekly Tracking

For immediate release

**1. Presidential Job Approval – Historical**

Do you approve or disapprove of the way [President's name] is handling his job as President?

	All Adults						
	Total Approve	Total Disapprove	Strongly Approve	Somewhat Approve	Somewhat Disapprove	Strongly Disapprove	Not Sure
February 23-27, 2018	40%	51%	21%	19%	9%	42%	9%
February 16-20, 2018	41%	48%	22%	19%	9%	39%	11%
February 9-13, 2018	41%	51%	21%	20%	11%	40%	8%
February 3-5, 2018	40%	52%	23%	17%	11%	41%	9%
January 27-29, 2018	39%	51%	21%	18%	11%	40%	10%
January 20-22, 2018	39%	52%	21%	18%	9%	43%	9%
January 13-15, 2018	42%	52%	21%	21%	12%	40%	6%
January 6-8, 2018	38%	51%	21%	17%	9%	42%	10%
December 30, 2017 - January 1, 2018	38%	52%	21%	17%	12%	40%	9%
December 23-25, 2017	38%	52%	22%	16%	10%	42%	9%
One Year Ago	41%	50%	23%	18%	13%	37%	9%

	Registered Voters						
	Total Approve	Total Disapprove	Strongly Approve	Somewhat Approve	Somewhat Disapprove	Strongly Disapprove	Not Sure
February 23-27, 2018	44%	53%	27%	17%	7%	46%	4%
February 16-20, 2018	44%	51%	26%	18%	8%	43%	4%
February 9-13, 2018	45%	50%	25%	20%	8%	42%	4%
February 3-5, 2018	45%	53%	29%	16%	8%	45%	3%
January 27-29, 2018	44%	53%	28%	16%	8%	45%	4%
January 20-22, 2018	43%	54%	26%	17%	7%	47%	3%
January 13-15, 2018	42%	54%	26%	16%	10%	44%	3%
January 6-8, 2018	42%	54%	26%	16%	9%	45%	4%
December 30, 2017 - January 1, 2018	43%	54%	26%	17%	10%	44%	3%
December 23-25, 2017	43%	53%	26%	17%	8%	45%	4%
One Year Ago	45%	51%	28%	17%	10%	41%	4%

## Presidential Job Approval

"Do you approve or disapprove of the way Donald Trump is handling his job as President?"

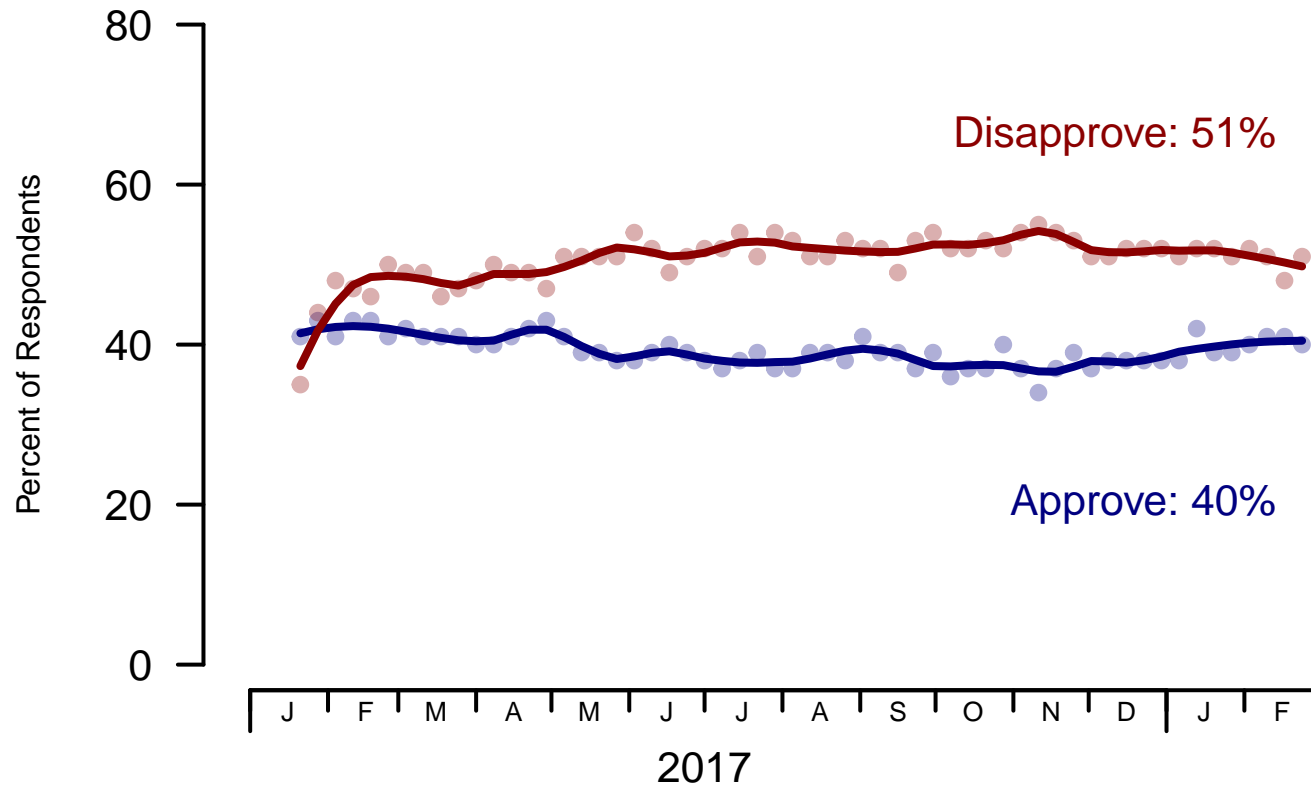


Figure 1: Trump Approval – All Adults

## Presidential Job Approval

"Do you approve or disapprove of the way Donald Trump is handling his job as President?"

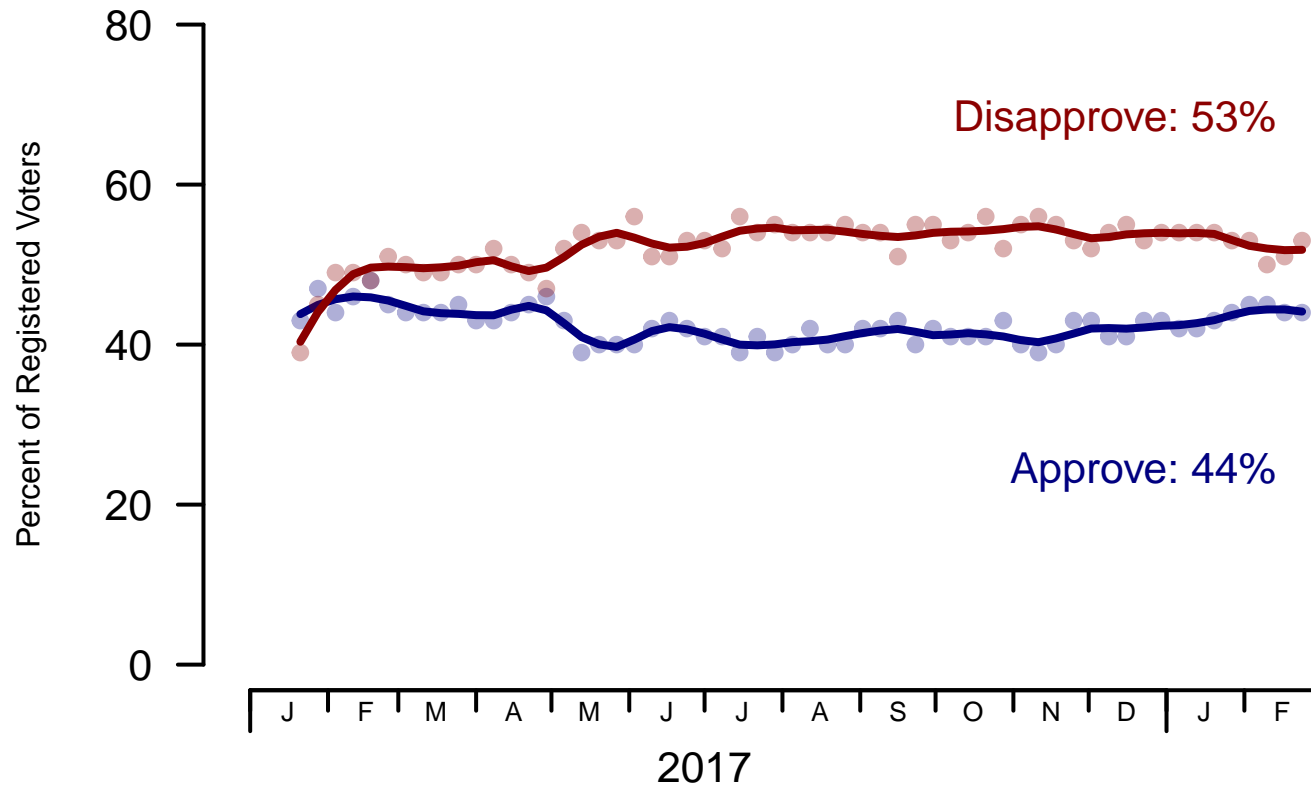


Figure 2: Trump Approval – Registered Voters

**2. President Trump Job Approval – This Week – All Adults**

Do you approve or disapprove of the way Donald Trump is handling his job as President?

	Age (4 category)					Race			Census Region			
	Total	Under 30	30-44	45-64	65+	White	Black	Hispanic	North-east	Mid-west	South	West
Strongly approve	21%	10%	15%	25%	33%	24%	6%	16%	16%	21%	22%	24%
Somewhat approve	19%	14%	20%	22%	18%	22%	9%	10%	13%	25%	20%	13%
Somewhat disapprove	9%	13%	9%	9%	5%	8%	16%	9%	13%	8%	9%	8%
Strongly disapprove	42%	43%	43%	38%	44%	38%	56%	46%	45%	40%	41%	40%
Not sure	9%	20%	12%	6%	0%	8%	13%	19%	13%	5%	8%	14%
Totals (Unweighted N)	100% (1,500)	100% (199)	100% (416)	100% (575)	100% (310)	100% (1,213)	100% (164)	100% (123)	100% (300)	100% (370)	100% (564)	100% (266)

	Party ID			Ideology			Gender		Family Income (3 category)			Prefer not to say	
	Total	Dem	Ind	Rep	Lib	Mod	Con	Male	Female	Under 50	50-100		100+
Strongly approve	21%	5%	18%	47%	2%	10%	50%	27%	15%	16%	21%	30%	26%
Somewhat approve	19%	6%	17%	37%	7%	18%	29%	20%	18%	20%	21%	16%	13%
Somewhat disapprove	9%	12%	10%	5%	3%	14%	8%	9%	10%	11%	12%	3%	8%
Strongly disapprove	42%	76%	37%	8%	87%	40%	10%	36%	47%	41%	43%	50%	33%
Not sure	9%	2%	18%	3%	2%	19%	3%	8%	10%	12%	4%	1%	20%
Totals (Unweighted N)	100% (1,500)	100% (501)	100% (607)	100% (392)	100% (415)	100% (576)	100% (509)	100% (660)	100% (840)	100% (619)	100% (397)	100% (313)	100% (171)

**3. Approval of U.S. Congress – Historical**

Overall, do you approve or disapprove of the way that the United States Congress is handling its job?

	All Adults							
	Total Approve	Total Disapprove	Strongly Approve	Somewhat Approve	Neutral	Somewhat Disapprove	Strongly Disapprove	Not Sure
February 23-27, 2018	12%	62%	3%	9%	13%	22%	40%	13%
February 16-20, 2018	11%	59%	3%	8%	15%	20%	39%	15%
February 9-13, 2018	12%	58%	3%	9%	16%	21%	37%	14%
February 3-5, 2018	12%	61%	3%	9%	12%	22%	39%	15%
January 27-29, 2018	11%	63%	3%	8%	12%	25%	38%	15%
January 20-22, 2018	10%	68%	3%	7%	12%	24%	44%	10%
January 13-15, 2018	12%	61%	3%	9%	17%	24%	37%	11%
January 6-8, 2018	12%	59%	2%	10%	13%	21%	38%	16%
December 30, 2017 - January 1, 2018	14%	56%	3%	11%	16%	20%	36%	14%
December 23-25, 2017	13%	57%	3%	10%	16%	19%	38%	15%
One Year Ago	17%	47%	3%	14%	21%	18%	29%	15%

	Registered Voters							
	Total Approve	Total Disapprove	Strongly Approve	Somewhat Approve	Neutral	Somewhat Disapprove	Strongly Disapprove	Not Sure
February 23-27, 2018	13%	70%	3%	10%	11%	24%	46%	6%
February 16-20, 2018	10%	70%	2%	8%	13%	22%	48%	7%
February 9-13, 2018	12%	68%	2%	10%	13%	24%	44%	7%
February 3-5, 2018	11%	70%	2%	9%	12%	24%	46%	7%
January 27-29, 2018	9%	74%	2%	7%	11%	27%	47%	7%
January 20-22, 2018	9%	76%	2%	7%	10%	25%	51%	4%
January 13-15, 2018	11%	69%	2%	9%	14%	25%	44%	5%
January 6-8, 2018	14%	67%	2%	12%	12%	25%	42%	8%
December 30, 2017 - January 1, 2018	15%	64%	3%	12%	14%	23%	41%	6%
December 23-25, 2017	14%	64%	2%	12%	14%	21%	43%	7%
One Year Ago	17%	56%	3%	14%	18%	21%	35%	8%

### Congress Approval

"Do you approve of the way the U.S. Congress is handling its job?"

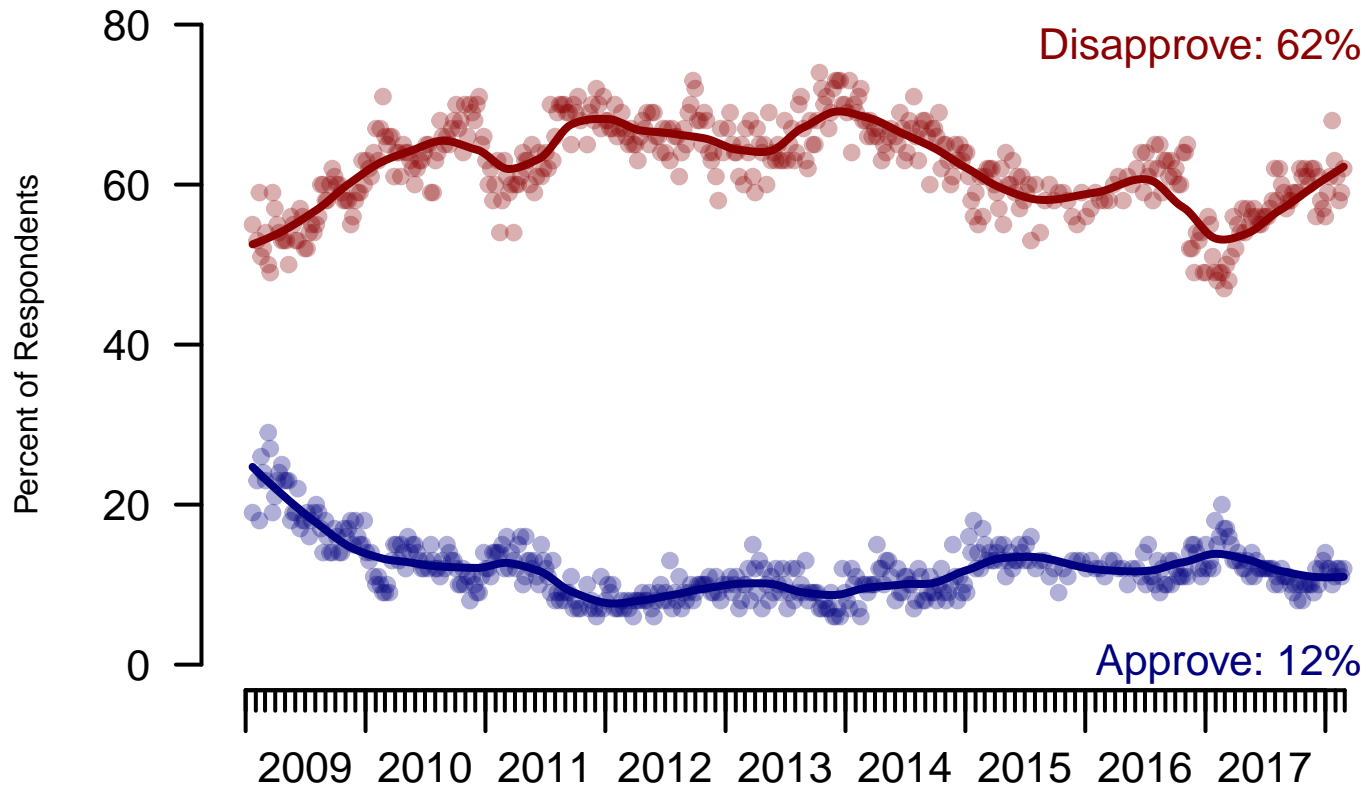


Figure 3: Congress Approval – All Adults

## Congress Approval

"Do you approve of the way the  
U.S. Congress is handling its job?"

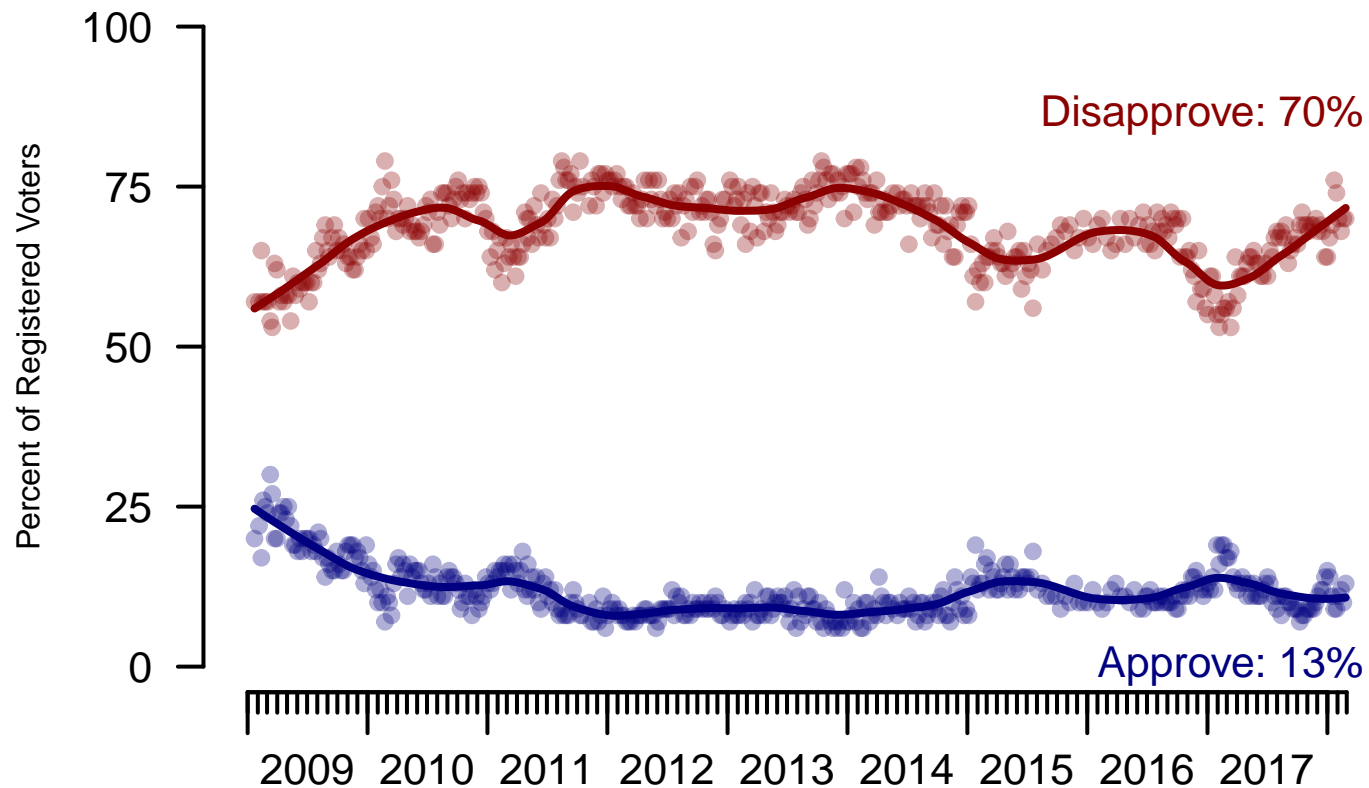


Figure 4: Congress Approval – Registered Voters



**4. Approval of U.S. Congress – This Week – All Adults**

Overall, do you approve or disapprove of the way that the United States Congress is handling its job?

	Age (4 category)					Race			Census Region			
	Total	Under 30	30-44	45-64	65+	White	Black	Hispanic	North-east	Mid-west	South	West
Strongly approve	3%	3%	4%	2%	2%	3%	1%	2%	1%	3%	3%	2%
Somewhat approve	9%	9%	10%	9%	10%	10%	3%	12%	9%	7%	10%	11%
Neither approve nor disapprove	13%	13%	16%	13%	9%	10%	22%	18%	18%	11%	14%	8%
Somewhat disapprove	22%	21%	20%	24%	23%	23%	21%	14%	21%	25%	22%	20%
Strongly disapprove	40%	28%	35%	44%	52%	41%	42%	33%	37%	39%	41%	42%
Not sure	13%	26%	15%	9%	4%	12%	11%	20%	15%	14%	10%	17%
Totals (Unweighted N)	100% (1,494)	100% (198)	100% (411)	100% (575)	100% (310)	100% (1,208)	100% (163)	100% (123)	100% (299)	100% (367)	100% (563)	100% (265)

	Party ID			Ideology			Gender		Family Income (3 category)				
	Total	Dem	Ind	Rep	Lib	Mod	Con	Male	Female	Under 50	50-100	100+	Prefer not to say
Strongly approve	3%	2%	2%	6%	2%	1%	5%	4%	1%	3%	2%	4%	1%
Somewhat approve	9%	5%	6%	22%	4%	7%	17%	11%	8%	9%	11%	11%	7%
Neither approve nor disapprove	13%	10%	14%	15%	5%	18%	11%	11%	15%	15%	12%	9%	10%
Somewhat disapprove	22%	19%	21%	28%	18%	18%	30%	22%	22%	18%	28%	24%	22%
Strongly disapprove	40%	57%	40%	19%	65%	34%	28%	43%	37%	38%	40%	50%	35%
Not sure	13%	7%	18%	11%	5%	21%	9%	10%	16%	17%	8%	2%	24%
Totals (Unweighted N)	100% (1,494)	100% (500)	100% (604)	100% (390)	100% (415)	100% (571)	100% (508)	100% (659)	100% (835)	100% (616)	100% (397)	100% (312)	100% (169)

**5. Direction of country – Historical**

Would you say things in this country today are...

	All Adults		
	Right Direction	Wrong Track	Not Sure
February 23-27, 2018	30%	56%	14%
February 16-20, 2018	33%	52%	15%
February 9-13, 2018	35%	51%	13%
February 3-5, 2018	35%	49%	16%
January 27-29, 2018	34%	51%	15%
January 20-22, 2018	33%	55%	12%
January 13-15, 2018	37%	51%	12%
January 6-8, 2018	33%	52%	15%
December 30, 2017 - January 1, 2018	33%	52%	14%
December 23-25, 2017	34%	52%	14%
One Year Ago	33%	50%	17%

	Registered Voters		
	Right Direction	Wrong Track	Not Sure
February 23-27, 2018	34%	58%	9%
February 16-20, 2018	35%	55%	10%
February 9-13, 2018	39%	52%	9%
February 3-5, 2018	39%	52%	9%
January 27-29, 2018	39%	51%	10%
January 20-22, 2018	37%	55%	8%
January 13-15, 2018	39%	53%	8%
January 6-8, 2018	38%	52%	11%
December 30, 2017 - January 1, 2018	37%	53%	9%
December 23-25, 2017	37%	52%	10%
One Year Ago	36%	53%	11%

## Direction of Country

"Would you say things in this country today are generally headed in the right direction or off on the wrong track?"

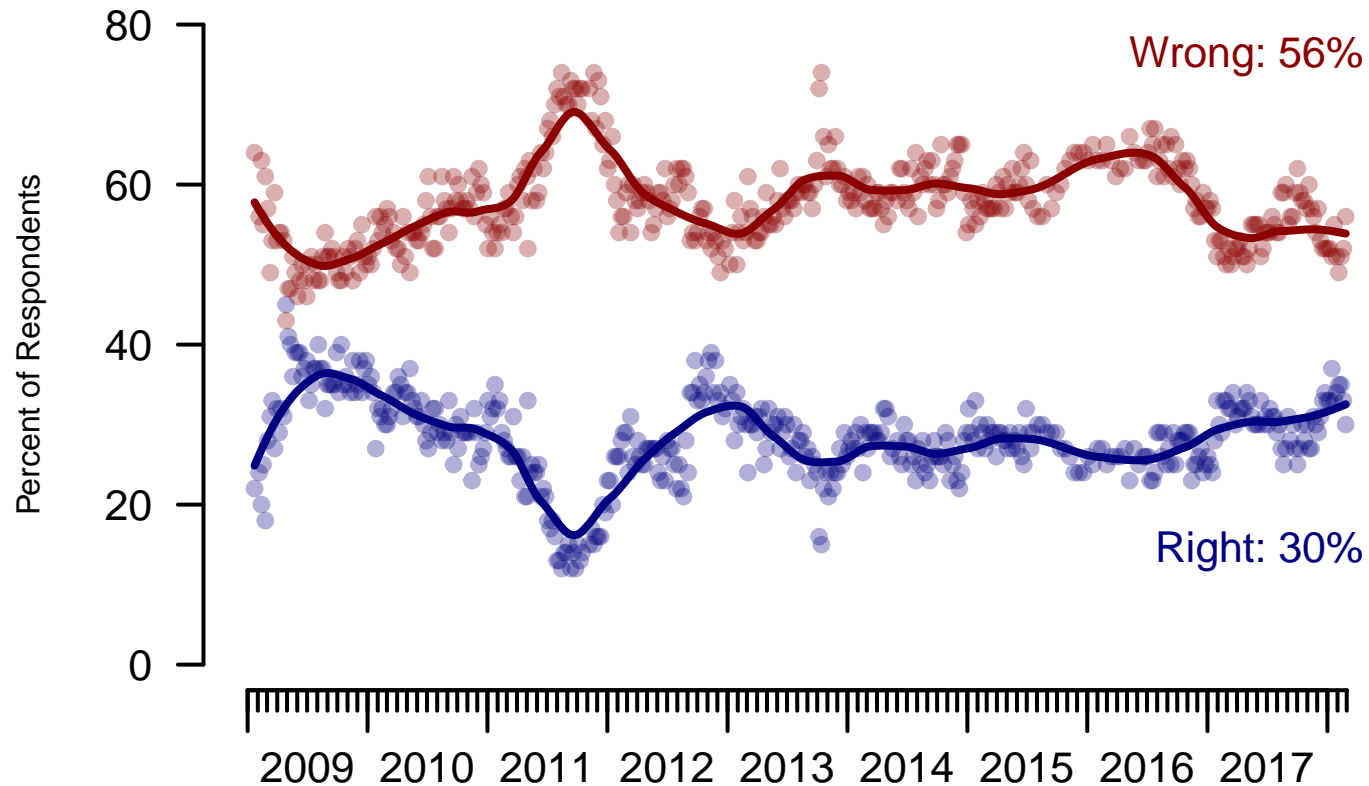


Figure 5: Direction of Country – All Adults

## Direction of Country

"Would you say things in this country today are generally headed in the right direction or off on the wrong track?"

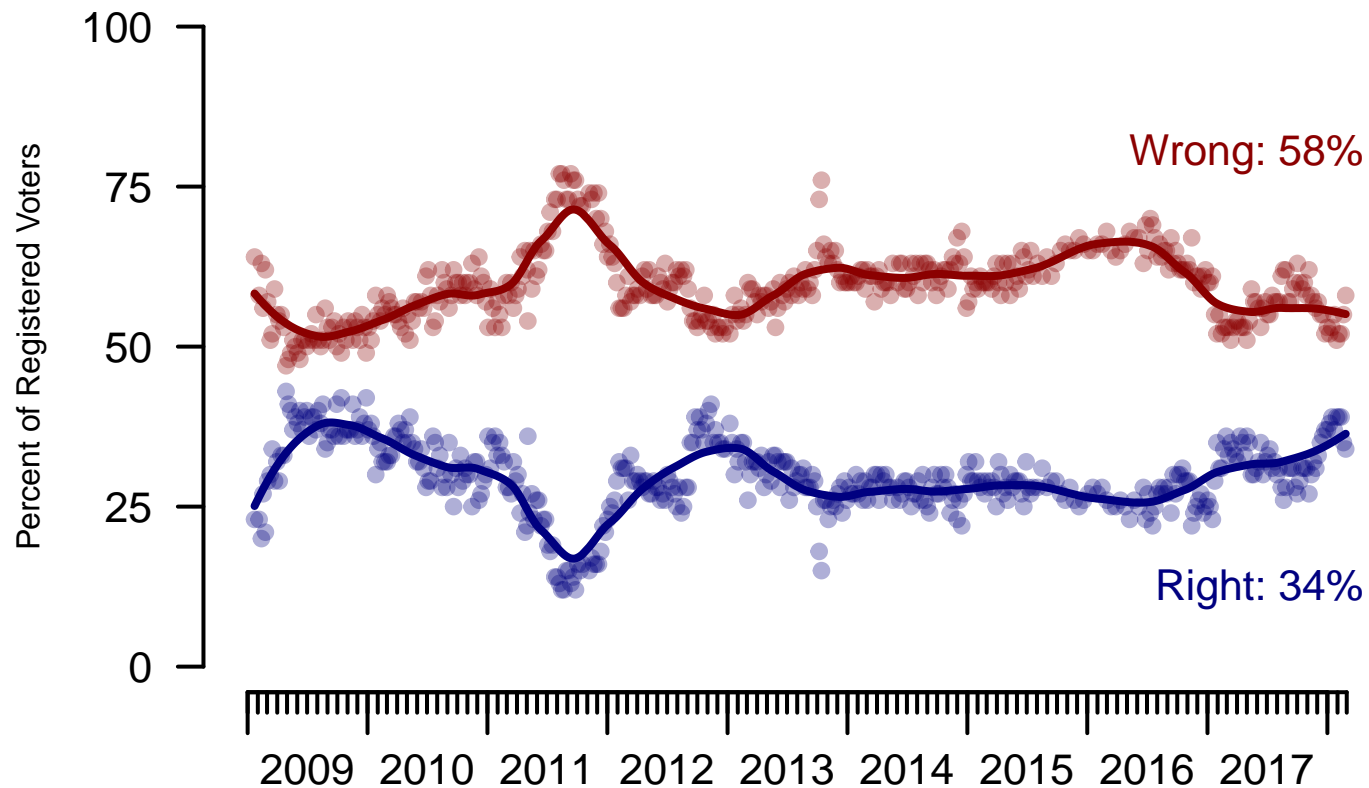


Figure 6: Direction of Country – Registered Voters

**6. Direction of Country – This Week – All Adults**

Would you say things in this country today are...

	Age (4 category)					Race			Census Region			
	Total	Under 30	30-44	45-64	65+	White	Black	Hispanic	North-east	Mid-west	South	West
Generally headed in the right direction	30%	23%	25%	34%	38%	32%	19%	31%	24%	36%	30%	31%
Off on the wrong track	56%	55%	57%	55%	56%	54%	69%	52%	61%	52%	57%	52%
Not sure	14%	22%	18%	11%	6%	13%	12%	17%	15%	12%	12%	17%
Totals (Unweighted N)	100% (1,500)	100% (199)	100% (416)	100% (575)	100% (310)	100% (1,213)	100% (164)	100% (123)	100% (300)	100% (370)	100% (564)	100% (266)

	Party ID			Ideology			Gender		Family Income (3 category)				
	Total	Dem	Ind	Rep	Lib	Mod	Con	Male	Female	Under 50	50-100	100+	Prefer not to say
Generally headed in the right direction	30%	10%	28%	59%	10%	23%	56%	36%	25%	28%	33%	34%	28%
Off on the wrong track	56%	82%	53%	29%	85%	57%	32%	51%	60%	56%	56%	60%	50%
Not sure	14%	8%	19%	11%	5%	20%	12%	13%	15%	16%	10%	6%	22%
Totals (Unweighted N)	100% (1,500)	100% (501)	100% (607)	100% (392)	100% (415)	100% (576)	100% (509)	100% (660)	100% (840)	100% (619)	100% (397)	100% (313)	100% (171)

**The Economist/YouGov Poll**  
February 25 - 28, 2018



<b>Sponsorship</b>	<i>The Economist</i>
<b>Fieldwork</b>	YouGov
<b>Interviewing Dates</b>	February 25 - 28, 2018
<b>Target population</b>	U.S. citizens, aged 18 and over.
<b>Sampling method</b>	Respondents were selected from YouGov's opt-in Internet panel using sample matching. A random sample (stratified by age, gender, race, education, and region) was selected from the 2014 American Community Study. Voter registration was imputed from the November 2014 Current Population Survey Registration and Voting Supplement.
<b>Weighting</b>	The sample was weighted based on age, gender, race, education, and 2016 Presidential vote. The weights range from 0.15 to 6.41, with a mean of one and a standard deviation of 0.8.
<b>Number of respondents</b>	1500
<b>Margin of error</b>	± 3.2% (adjusted for weighting)
<b>Margin of error (Registered Voters)</b>	± 3.3% (adjusted for weighting)
<b>Survey mode</b>	Web-based interviews
<b>Full results</b>	Available online at <a href="http://today.yougov.com/news/categories/economist/">http://today.yougov.com/news/categories/economist/</a> .