

Interviewing: November 2-4, 2013
Sample: 1000 Adults nationwide online
686 registered voters nationwide online



806 D Street, SE
Washington, DC 20003

Contact:
Thomas Riehle
Ph: (202) 544-2550

The Economist/YouGov Poll

Weekly Tracking

For immediate release

1. Approval of Obama as President – Historical

Do you approve or disapprove of the way Barack Obama is handling his job as President?

	All Adults						
	Total Approve	Total Disapprove	Strongly Approve	Somewhat Approve	Somewhat Disapprove	Strongly Disapprove	Not Sure
November 2-4, 2013	38%	53%	15%	23%	11%	42%	8%
October 26-28, 2013	40%	54%	13%	27%	15%	39%	5%
October 19-21, 2013	42%	53%	19%	23%	13%	40%	5%
October 12-14, 2013	41%	55%	17%	24%	13%	42%	4%
October 5-7, 2013	41%	51%	18%	23%	15%	36%	8%
September 28-30, 2013	43%	49%	15%	28%	13%	36%	8%
September 21-23, 2013	38%	55%	17%	21%	14%	41%	7%
September 14-16, 2013	41%	53%	15%	26%	16%	37%	7%
September 7-9, 2013	38%	56%	14%	24%	17%	39%	7%
August 31-September 2, 2013	40%	55%	15%	25%	15%	40%	5%
One Year Ago	45%	51%	25%	20%	11%	40%	4%

	Registered Voters						
	Total Approve	Total Disapprove	Strongly Approve	Somewhat Approve	Somewhat Disapprove	Strongly Disapprove	Not Sure
November 2-4, 2013	41%	53%	18%	23%	8%	45%	5%
October 26-28, 2013	44%	54%	17%	27%	11%	43%	2%
October 19-21, 2013	47%	50%	22%	25%	8%	42%	3%
October 12-14, 2013	42%	56%	18%	24%	8%	48%	2%
October 5-7, 2013	48%	48%	21%	27%	10%	38%	4%
September 28-30, 2013	43%	53%	18%	25%	11%	42%	4%
September 21-23, 2013	43%	55%	21%	22%	11%	44%	2%
September 14-16, 2013	44%	55%	18%	26%	12%	43%	2%
September 7-9, 2013	43%	55%	18%	25%	13%	42%	2%
August 31-September 2, 2013	44%	55%	18%	26%	11%	44%	2%
One Year Ago	47%	51%	28%	19%	9%	42%	2%

Obama Approval

"Do you approve or disapprove of the way Barack Obama is handling his job as President?"

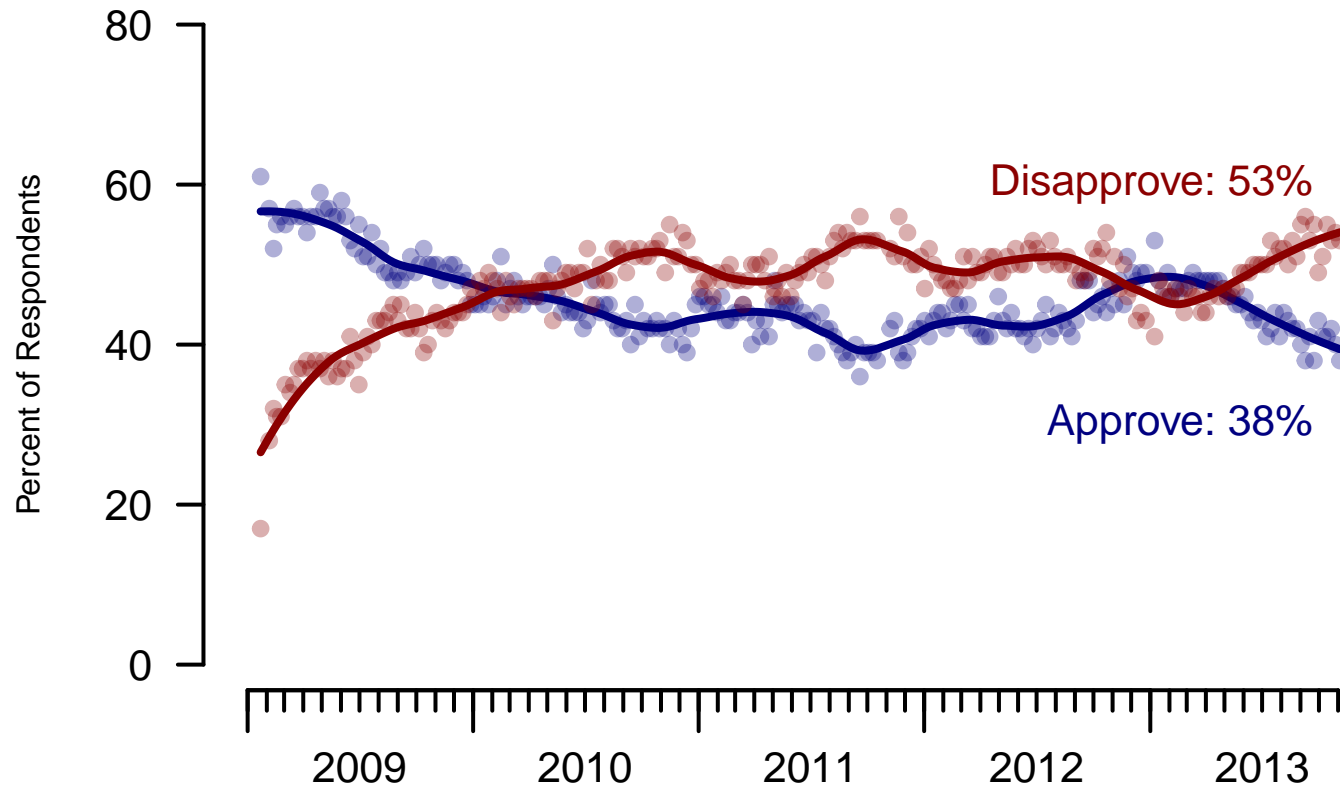


Figure 1: Obama Approval – All Adults

Obama Approval

"Do you approve or disapprove of the way Barack Obama is handling his job as President?"

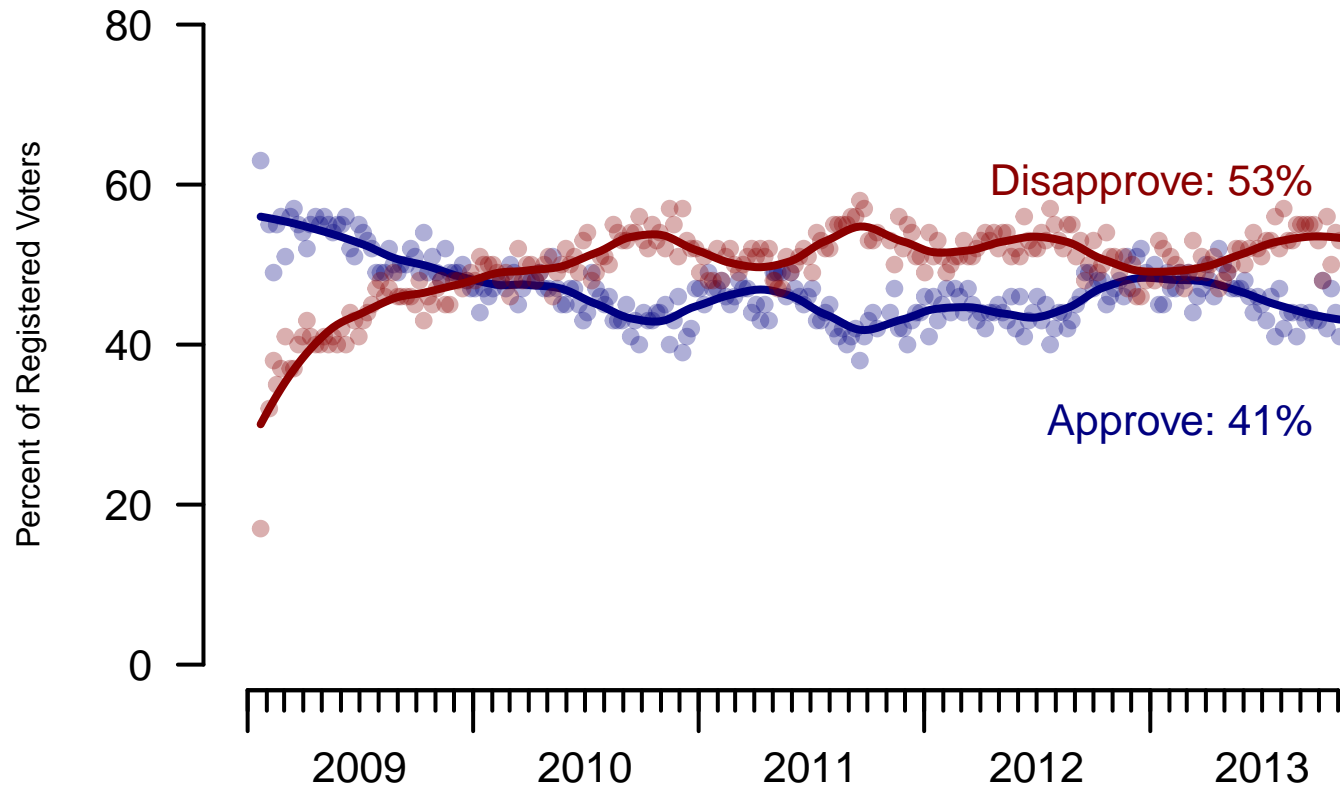


Figure 2: Obama Approval – Registered Voters

2. Approval of Obama as President – This Week – All Adults

Do you approve or disapprove of the way Barack Obama is handling his job as President?

	Age					Race			Gender		Education		
	Total	18-29	30-44	45-64	65+	White	Black	Hispanic	Male	Female	HS or less	Some college	College graduate
Strongly approve	15%	10%	15%	17%	18%	11%	38%	13%	15%	14%	12%	15%	19%
Somewhat approve	23%	22%	27%	22%	22%	20%	35%	31%	22%	24%	20%	24%	28%
Somewhat disapprove	11%	12%	13%	12%	5%	12%	8%	12%	9%	13%	9%	12%	14%
Strongly disapprove	42%	39%	41%	41%	54%	50%	7%	36%	45%	40%	47%	40%	38%
Not sure	8%	18%	4%	8%	1%	7%	12%	8%	8%	8%	11%	8%	1%
Totals (Unweighted N)	100% (998)	100% (126)	100% (346)	100% (382)	100% (144)	100% (745)	100% (141)	100% (112)	100% (474)	100% (524)	100% (320)	100% (372)	100% (306)

	Party ID			Ideology			Region				Family Income			
	Total	Dem	Rep	Ind	Lib	Mod	Con	North-east	Mid-west	South	West	Under 40	40-100	100+
Strongly approve	15%	30%	3%	11%	28%	18%	7%	12%	15%	16%	16%	16%	14%	5%
Somewhat approve	23%	44%	3%	21%	44%	28%	12%	25%	22%	26%	19%	21%	28%	31%
Somewhat disapprove	11%	9%	9%	11%	16%	11%	8%	7%	9%	11%	17%	12%	13%	15%
Strongly disapprove	42%	15%	79%	50%	9%	35%	71%	38%	48%	40%	44%	43%	44%	48%
Not sure	8%	2%	6%	8%	3%	8%	2%	18%	5%	7%	4%	9%	2%	1%
Totals (Unweighted N)	100% (998)	100% (403)	100% (237)	100% (298)	100% (266)	100% (344)	100% (339)	100% (174)	100% (223)	100% (347)	100% (254)	100% (360)	100% (390)	100% (80)

3. Approval of U.S. Congress – Historical

Overall, do you approve or disapprove of the way that the United States Congress is handling its job?

All Adults

	Total Approve	Total Disapprove	Strongly Approve	Somewhat Approve	Neutral	Somewhat Disapprove	Strongly Disapprove	Not Sure
November 2-4, 2013	7%	71%	1%	6%	12%	20%	51%	10%
October 26-28, 2013	8%	70%	2%	6%	13%	20%	50%	9%
October 19-21, 2013	7%	72%	1%	6%	12%	24%	48%	8%
October 12-14, 2013	7%	74%	1%	6%	14%	20%	54%	5%
October 5-7, 2013	9%	68%	2%	7%	12%	19%	49%	10%
September 28-30, 2013	9%	65%	2%	7%	16%	20%	45%	11%
September 21-23, 2013	9%	65%	1%	8%	13%	22%	43%	12%
September 14-16, 2013	9%	68%	2%	7%	14%	19%	49%	10%
September 7-9, 2013	8%	62%	1%	7%	21%	23%	39%	8%
August 31-September 2, 2013	13%	63%	2%	11%	18%	22%	41%	7%
One Year Ago	10%	68%	2%	8%	14%	29%	39%	9%

Registered Voters

	Total Approve	Total Disapprove	Strongly Approve	Somewhat Approve	Neutral	Somewhat Disapprove	Strongly Disapprove	Not Sure
November 2-4, 2013	8%	73%	2%	6%	13%	21%	52%	6%
October 26-28, 2013	9%	76%	2%	7%	12%	20%	56%	5%
October 19-21, 2013	6%	78%	1%	5%	10%	24%	54%	5%
October 12-14, 2013	7%	79%	1%	6%	11%	21%	58%	3%
October 5-7, 2013	10%	76%	2%	8%	10%	21%	55%	5%
September 28-30, 2013	7%	74%	1%	6%	13%	22%	52%	6%
September 21-23, 2013	9%	72%	2%	7%	13%	25%	47%	7%
September 14-16, 2013	9%	76%	1%	8%	9%	21%	55%	4%
September 7-9, 2013	11%	70%	2%	9%	16%	26%	44%	4%
August 31-September 2, 2013	11%	69%	1%	10%	17%	23%	46%	3%
One Year Ago	9%	73%	1%	8%	13%	29%	44%	5%

Congress Approval

"Do you approve of the way the U.S. Congress is handling its job?"

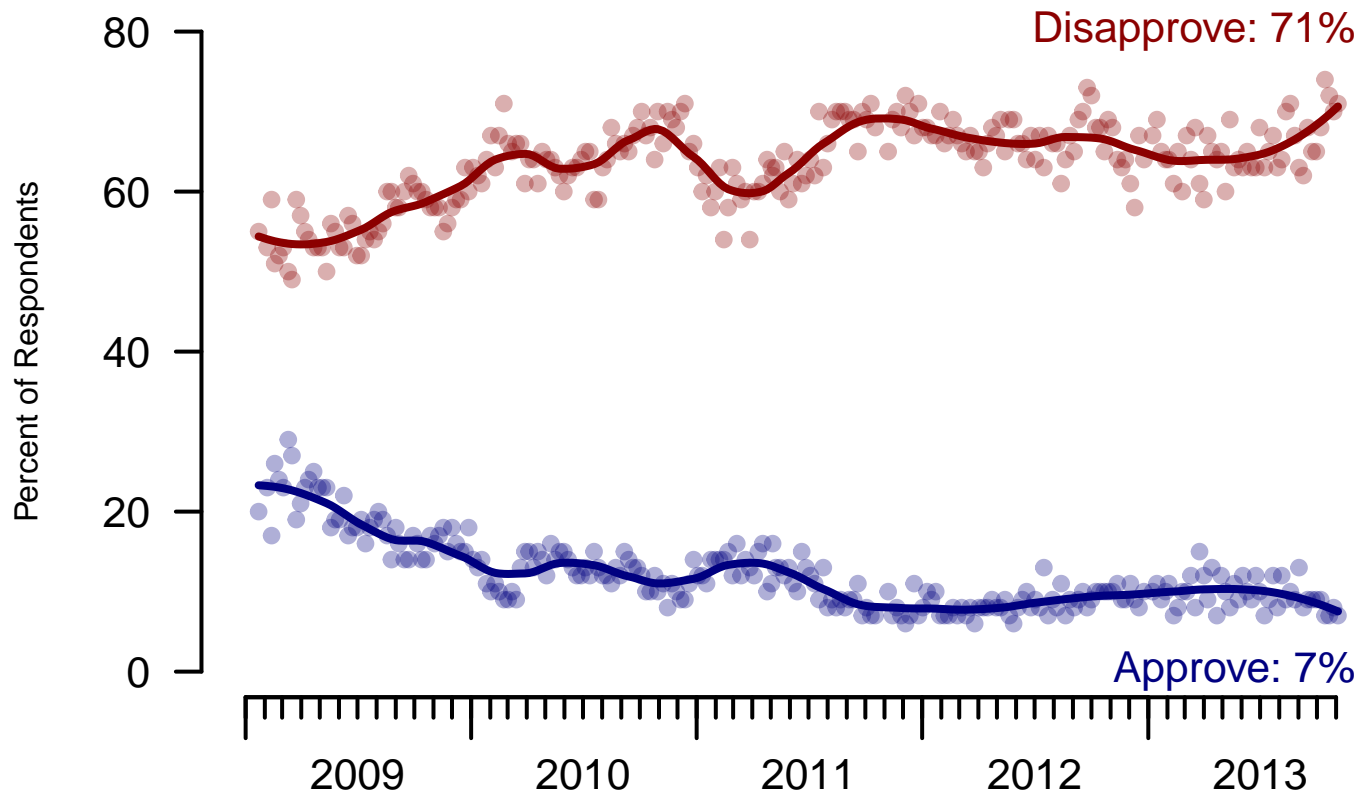


Figure 3: Congress Approval – All Adults

Congress Approval

"Do you approve of the way the
U.S. Congress is handling its job?"

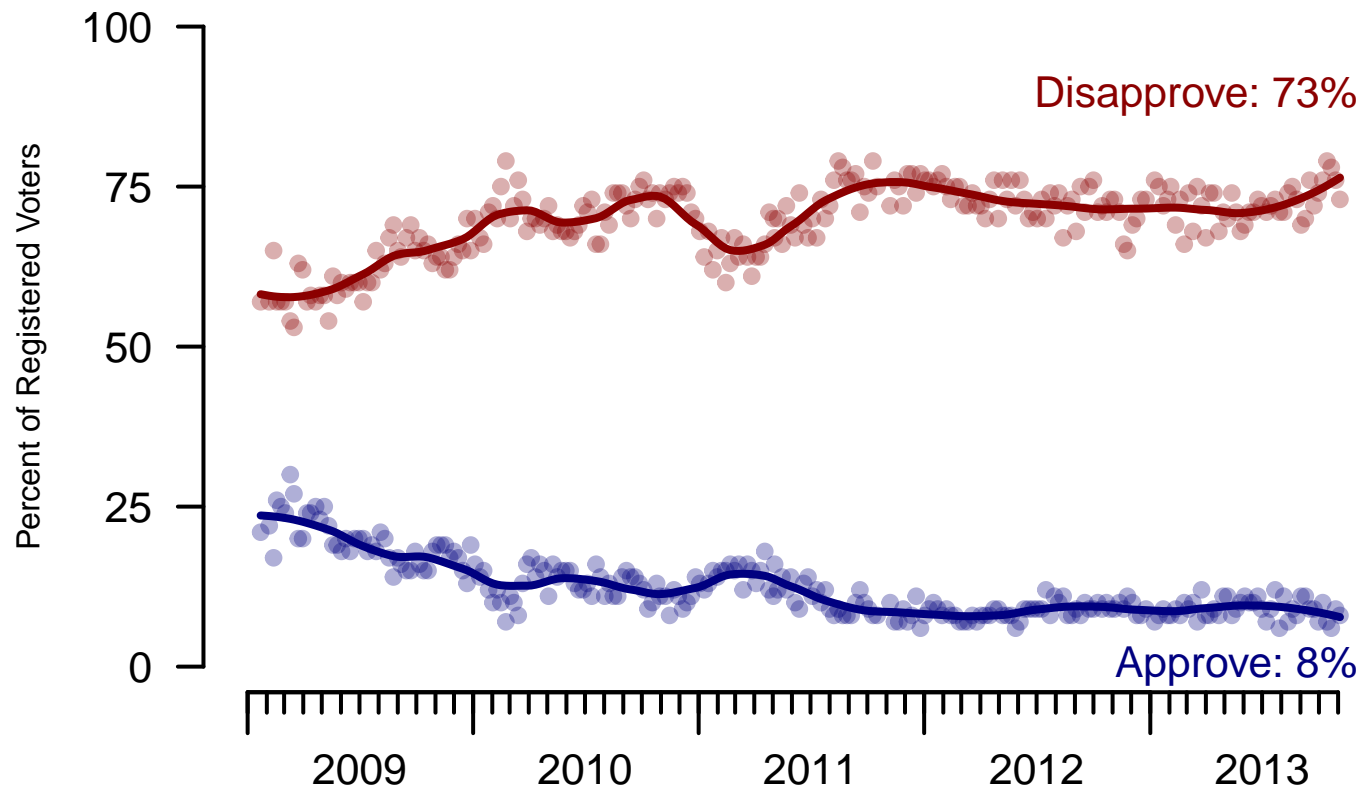


Figure 4: Congress Approval – Registered Voters

4. Approval of U.S. Congress – This Week – All Adults

Overall, do you approve or disapprove of the way that the United States Congress is handling its job?

	Age					Race			Gender		Education		
	Total	18-29	30-44	45-64	65+	White	Black	Hispanic	Male	Female	HS or less	Some college	College graduate
Strongly approve	1%	4%	0%	0%	0%	0%	5%	3%	2%	0%	0%	3%	–
Somewhat approve	6%	8%	4%	7%	3%	5%	9%	6%	8%	4%	8%	5%	3%
Neither approve nor disapprove	12%	14%	15%	8%	9%	9%	17%	24%	11%	12%	12%	12%	11%
Somewhat disapprove	20%	15%	22%	21%	20%	20%	15%	26%	19%	21%	21%	19%	20%
Strongly disapprove	51%	38%	54%	54%	62%	56%	40%	39%	54%	49%	43%	51%	66%
Not sure	10%	21%	4%	10%	5%	10%	14%	4%	6%	14%	16%	10%	1%
Totals (Unweighted N)	100% (999)	100% (126)	100% (346)	100% (383)	100% (144)	100% (746)	100% (141)	100% (112)	100% (474)	100% (525)	100% (320)	100% (371)	100% (308)

	Party ID			Ideology			Region				Family Income			
	Total	Dem	Rep	Ind	Lib	Mod	Con	North-east	Mid-west	South	West	Under 40	40-100	100+
Strongly approve	1%	2%	0%	1%	4%	0%	0%	0%	2%	2%	–	2%	0%	–
Somewhat approve	6%	7%	10%	2%	4%	5%	8%	7%	5%	8%	2%	5%	5%	7%
Neither approve nor disapprove	12%	17%	8%	9%	12%	18%	7%	12%	14%	11%	10%	12%	15%	4%
Somewhat disapprove	20%	17%	32%	18%	16%	16%	27%	10%	19%	24%	22%	23%	19%	14%
Strongly disapprove	51%	49%	38%	63%	59%	55%	52%	48%	57%	45%	59%	45%	55%	73%
Not sure	10%	7%	12%	7%	4%	7%	5%	23%	3%	10%	7%	13%	5%	1%
Totals (Unweighted N)	100% (999)	100% (403)	100% (237)	100% (299)	100% (266)	100% (344)	100% (340)	100% (174)	100% (223)	100% (349)	100% (253)	100% (360)	100% (391)	100% (80)

5. Direction of country – Historical

Would you say things in this country today are...

	All Adults		
	Right Direction	Wrong Track	Not Sure
November 2-4, 2013	21%	65%	14%
October 26-28, 2013	24%	61%	14%
October 19-21, 2013	22%	66%	13%
October 12-14, 2013	15%	74%	12%
October 5-7, 2013	16%	72%	12%
September 28-30, 2013	24%	63%	13%
September 21-23, 2013	25%	60%	15%
September 14-16, 2013	26%	57%	17%
September 7-9, 2013	23%	59%	17%
August 31-September 2, 2013	27%	59%	14%
One Year Ago	38%	54%	9%

	Registered Voters		
	Right Direction	Wrong Track	Not Sure
November 2-4, 2013	23%	63%	14%
October 26-28, 2013	26%	64%	10%
October 19-21, 2013	26%	66%	8%
October 12-14, 2013	15%	76%	9%
October 5-7, 2013	18%	73%	9%
September 28-30, 2013	25%	65%	10%
September 21-23, 2013	29%	62%	9%
September 14-16, 2013	30%	58%	12%
September 7-9, 2013	28%	60%	12%
August 31-September 2, 2013	28%	59%	13%
One Year Ago	40%	54%	6%

Direction of Country

"Would you say things in this country today are generally headed in the right direction or off on the wrong track?"

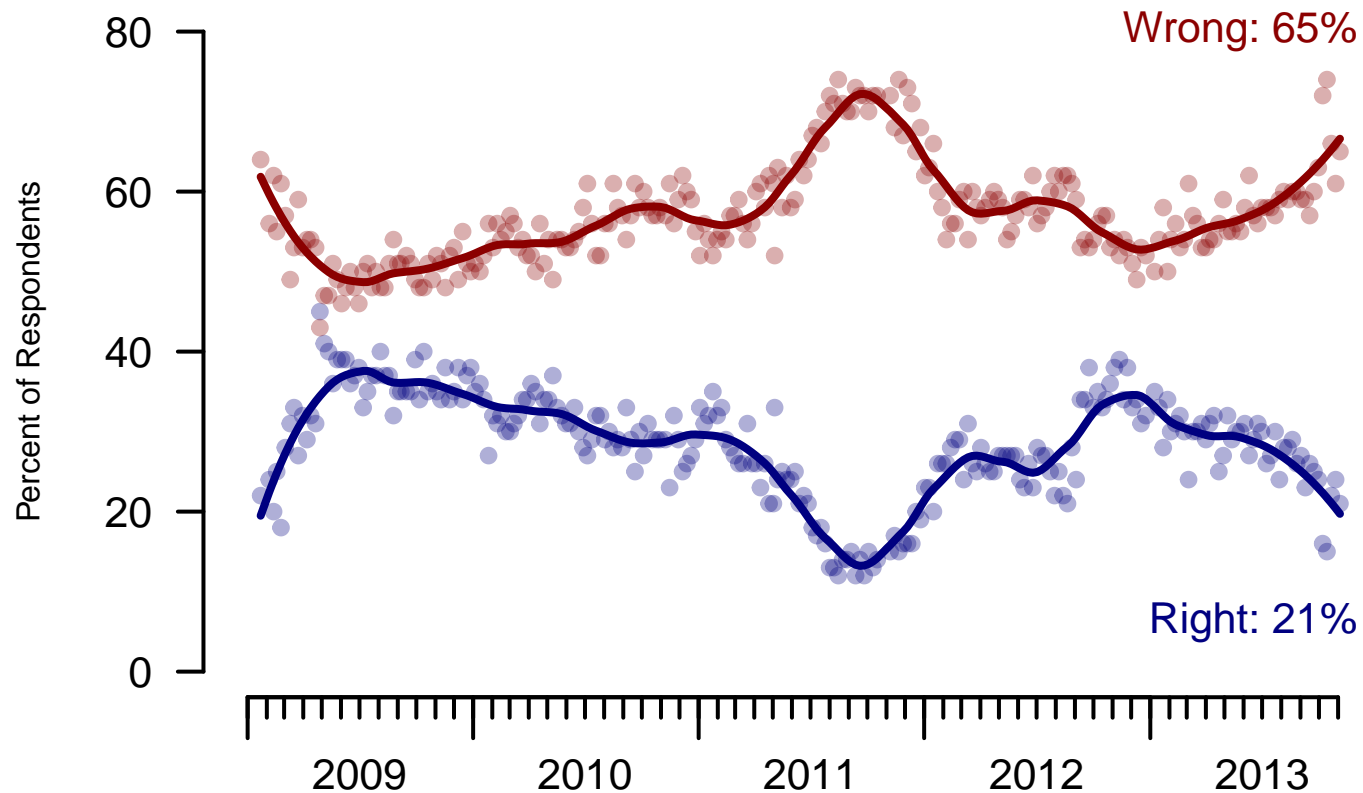


Figure 5: Direction of Country – All Adults

Direction of Country

"Would you say things in this country today are generally headed in the right direction or off on the wrong track?"

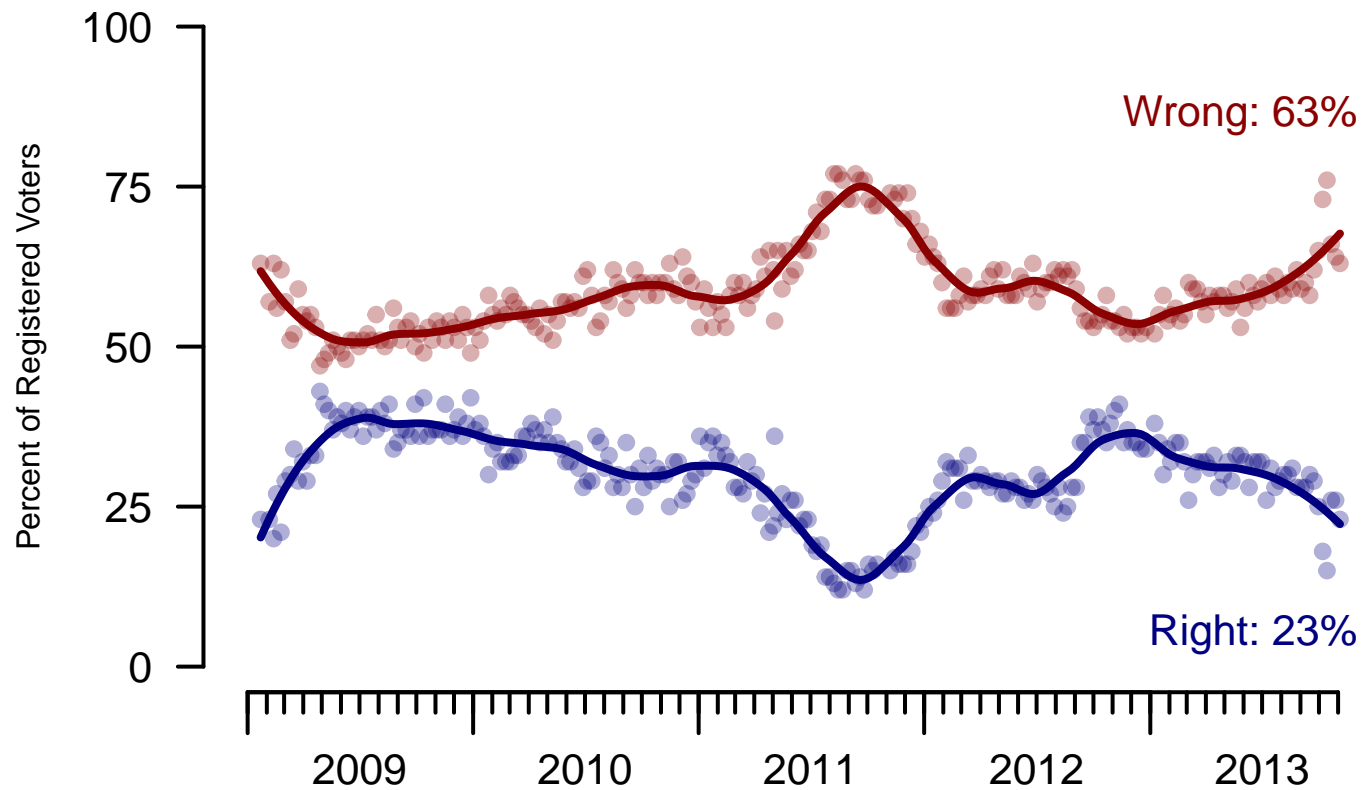


Figure 6: Direction of Country – Registered Voters

6. Direction of Country – This Week – All Adults

Would you say things in this country today are...

	Total	Age				Race			Gender		Education		
		18-29	30-44	45-64	65+	White	Black	Hispanic	Male	Female	HS or less	Some college	College graduate
Generally headed in the right direction	21%	18%	20%	21%	26%	16%	38%	29%	25%	17%	18%	22%	25%
Off on the wrong track	65%	60%	64%	68%	69%	71%	39%	59%	61%	68%	69%	64%	60%
Not sure	14%	22%	16%	11%	5%	13%	23%	12%	14%	15%	13%	15%	16%
Totals (Unweighted N)	100% (999)	100% (126)	100% (347)	100% (382)	100% (144)	100% (746)	100% (141)	100% (112)	100% (473)	100% (526)	100% (319)	100% (372)	100% (308)

	Total	Party ID			Ideology			Region				Family Income		
		Dem	Rep	Ind	Lib	Mod	Con	North-east	Mid-west	South	West	Under 40	40-100	100+
Generally headed in the right direction	21%	36%	6%	18%	38%	27%	9%	26%	20%	18%	22%	20%	21%	17%
Off on the wrong track	65%	47%	87%	73%	45%	61%	84%	55%	67%	67%	68%	68%	66%	76%
Not sure	14%	17%	7%	9%	18%	12%	6%	19%	13%	15%	11%	12%	13%	7%
Totals (Unweighted N)	100% (999)	100% (403)	100% (237)	100% (299)	100% (266)	100% (344)	100% (340)	100% (174)	100% (222)	100% (349)	100% (254)	100% (360)	100% (391)	100% (80)

Sponsorship	<i>The Economist</i>
Fieldwork	YouGov
Interviewing Dates	November 2-4, 2013
Target population	U.S. citizens, aged 18 and over.
Sampling method	Respondents were selected from YouGov's panel using sample matching. A random sample (stratified by age, gender, race, education, and region) was selected from the 2005–2007 American Community Survey. Voter registration, turnout, religion, news interest, minor party identification, and non-placement on an ideology scale, were imputed from the 2008 Current Population Survey Registration and Voting Supplement and the Pew Religion in American Life Survey. Matching respondents were selected from the YouGov panel, an opt-in Internet panel.
Weighting	The sample was weighted using propensity scores based on age, gender, race, education, news interest, voter registration, and non-placement on an ideology scale. The weights range from 0.1 to 7.26, with a mean of one and a standard deviation of 1.3.
Number of respondents	1,000
Margin of error	± 5% (adjusted for weighting)
Margin of error (Registered Voters)	± 5.2% (adjusted for weighting)
Survey mode	Web-based interviews
Full results	Available online at http://today.yougov.com/news/categories/economist/ .