

Interviewing: August 23-25, 2014
Sample: 1000 Adults nationwide online
683 registered voters nationwide online



The Economist/YouGov Poll

Weekly Tracking

For immediate release

1. Approval of Obama as President – Historical

Do you approve or disapprove of the way Barack Obama is handling his job as President?

	All Adults						
	Total Approve	Total Disapprove	Strongly Approve	Somewhat Approve	Somewhat Disapprove	Strongly Disapprove	Not Sure
August 23-25, 2014	42%	55%	14%	28%	15%	40%	4%
August 16-18, 2014	45%	51%	15%	30%	12%	39%	4%
August 9-11, 2014	46%	49%	16%	30%	14%	35%	6%
August 2-4, 2014	44%	51%	16%	28%	15%	36%	5%
July 26-28, 2014	38%	57%	16%	22%	17%	40%	5%
July 19-21, 2014	45%	52%	18%	27%	13%	39%	4%
July 12-14, 2014	43%	52%	16%	27%	13%	39%	5%
July 5-7, 2014	41%	56%	17%	24%	19%	37%	4%
June 28-30, 2014	45%	48%	16%	29%	13%	35%	7%
June 21-23, 2014	44%	52%	19%	25%	14%	38%	3%
One Year Ago	42%	51%	13%	29%	9%	42%	7%

	Registered Voters						
	Total Approve	Total Disapprove	Strongly Approve	Somewhat Approve	Somewhat Disapprove	Strongly Disapprove	Not Sure
August 23-25, 2014	43%	56%	17%	26%	14%	42%	2%
August 16-18, 2014	44%	52%	17%	27%	11%	41%	3%
August 9-11, 2014	43%	53%	18%	25%	12%	41%	3%
August 2-4, 2014	42%	54%	16%	26%	11%	43%	4%
July 26-28, 2014	42%	56%	17%	25%	16%	40%	2%
July 19-21, 2014	44%	54%	19%	25%	10%	44%	2%
July 12-14, 2014	42%	53%	16%	26%	11%	42%	5%
July 5-7, 2014	42%	56%	18%	24%	15%	41%	3%
June 28-30, 2014	46%	51%	17%	29%	12%	39%	4%
June 21-23, 2014	44%	54%	21%	23%	12%	42%	2%
One Year Ago	41%	55%	15%	26%	9%	46%	4%

Obama Approval

"Do you approve or disapprove of the way Barack Obama is handling his job as President?"

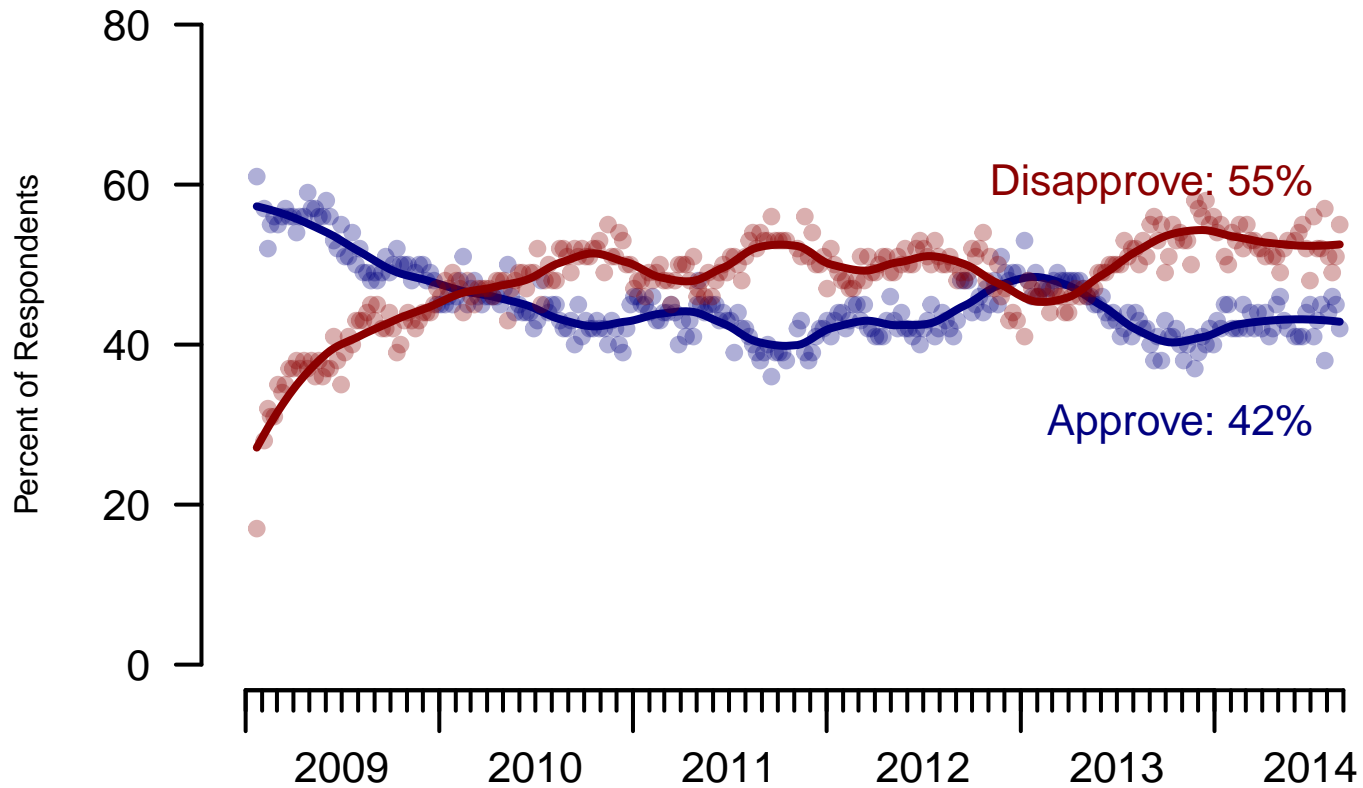


Figure 1: Obama Approval – All Adults

Obama Approval

"Do you approve or disapprove of the way Barack Obama is handling his job as President?"

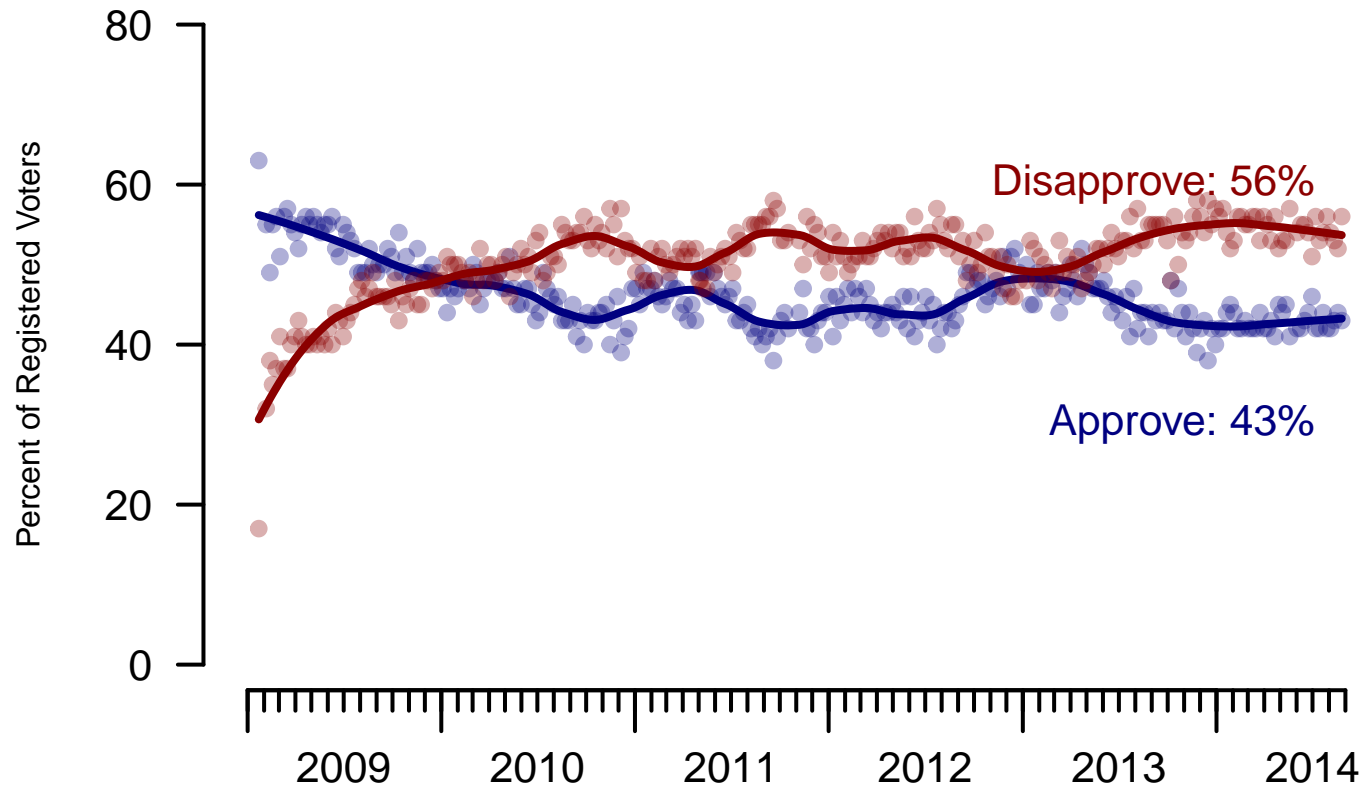


Figure 2: Obama Approval – Registered Voters

2. Approval of Obama as President – This Week – All Adults

Do you approve or disapprove of the way Barack Obama is handling his job as President?

	Age					Race				Region			
	Total	18-29	30-44	45-64	65+	White	Black	Hispanic	Other	North-east	Mid-west	South	West
Strongly approve	14%	13%	14%	15%	12%	9%	35%	19%	10%	19%	15%	14%	9%
Somewhat approve	28%	39%	28%	25%	17%	24%	40%	35%	36%	33%	27%	26%	27%
Somewhat disapprove	15%	12%	25%	10%	10%	15%	14%	14%	10%	13%	13%	15%	17%
Strongly disapprove	40%	33%	27%	47%	58%	48%	10%	26%	36%	26%	43%	42%	44%
Not sure	4%	3%	6%	3%	3%	3%	2%	5%	9%	10%	2%	3%	2%
Totals (Unweighted N)	100% (1,000)	100% (162)	100% (303)	100% (388)	100% (147)	100% (687)	100% (138)	100% (113)	100% (62)	100% (200)	100% (240)	100% (360)	100% (200)

	Party ID			Ideology			Gender		Family Income			
	Total	Dem	Ind	Rep	Lib	Mod	Con	Male	Female	Under 40	40-100	100+
Strongly approve	14%	32%	8%	1%	33%	13%	3%	12%	16%	14%	13%	17%
Somewhat approve	28%	48%	27%	4%	43%	38%	10%	24%	32%	33%	26%	26%
Somewhat disapprove	15%	12%	18%	11%	15%	18%	11%	16%	13%	17%	14%	12%
Strongly disapprove	40%	7%	45%	81%	7%	27%	72%	46%	34%	34%	42%	45%
Not sure	4%	2%	3%	3%	2%	4%	4%	2%	5%	2%	4%	1%
Totals (Unweighted N)	100% (1,000)	100% (351)	100% (324)	100% (240)	100% (238)	100% (355)	100% (345)	100% (482)	100% (518)	100% (375)	100% (369)	100% (125)

3. Approval of U.S. Congress – Historical

Overall, do you approve or disapprove of the way that the United States Congress is handling its job?

All Adults								
	Total Approve	Total Disapprove	Strongly Approve	Somewhat Approve	Neutral	Somewhat Disapprove	Strongly Disapprove	Not Sure
August 23-25, 2014	8%	68%	2%	6%	15%	22%	46%	9%
August 16-18, 2014	11%	67%	2%	9%	15%	24%	43%	7%
August 9-11, 2014	12%	63%	3%	9%	16%	21%	42%	8%
August 2-4, 2014	8%	66%	1%	7%	18%	20%	46%	7%
July 26-28, 2014	7%	71%	3%	4%	18%	26%	45%	5%
July 19-21, 2014	10%	67%	2%	8%	15%	23%	44%	7%
July 12-14, 2014	10%	68%	3%	7%	15%	25%	43%	7%
July 5-7, 2014	11%	64%	3%	8%	18%	26%	38%	8%
June 28-30, 2014	11%	63%	3%	8%	18%	19%	44%	8%
June 21-23, 2014	9%	67%	2%	7%	18%	24%	43%	6%
One Year Ago	9%	67%	1%	8%	13%	22%	45%	11%

Registered Voters								
	Total Approve	Total Disapprove	Strongly Approve	Somewhat Approve	Neutral	Somewhat Disapprove	Strongly Disapprove	Not Sure
August 23-25, 2014	7%	74%	2%	5%	14%	25%	49%	4%
August 16-18, 2014	10%	72%	1%	9%	13%	24%	48%	5%
August 9-11, 2014	10%	70%	2%	8%	14%	23%	47%	5%
August 2-4, 2014	8%	72%	1%	7%	14%	23%	49%	5%
July 26-28, 2014	7%	72%	2%	5%	16%	24%	48%	4%
July 19-21, 2014	10%	72%	3%	7%	14%	24%	48%	5%
July 12-14, 2014	9%	74%	3%	6%	12%	26%	48%	5%
July 5-7, 2014	11%	66%	3%	8%	17%	25%	41%	7%
June 28-30, 2014	9%	72%	2%	7%	13%	22%	50%	6%
June 21-23, 2014	9%	73%	2%	7%	14%	26%	47%	4%
One Year Ago	8%	73%	1%	7%	12%	22%	51%	6%

Congress Approval

"Do you approve of the way the
U.S. Congress is handling its job?"

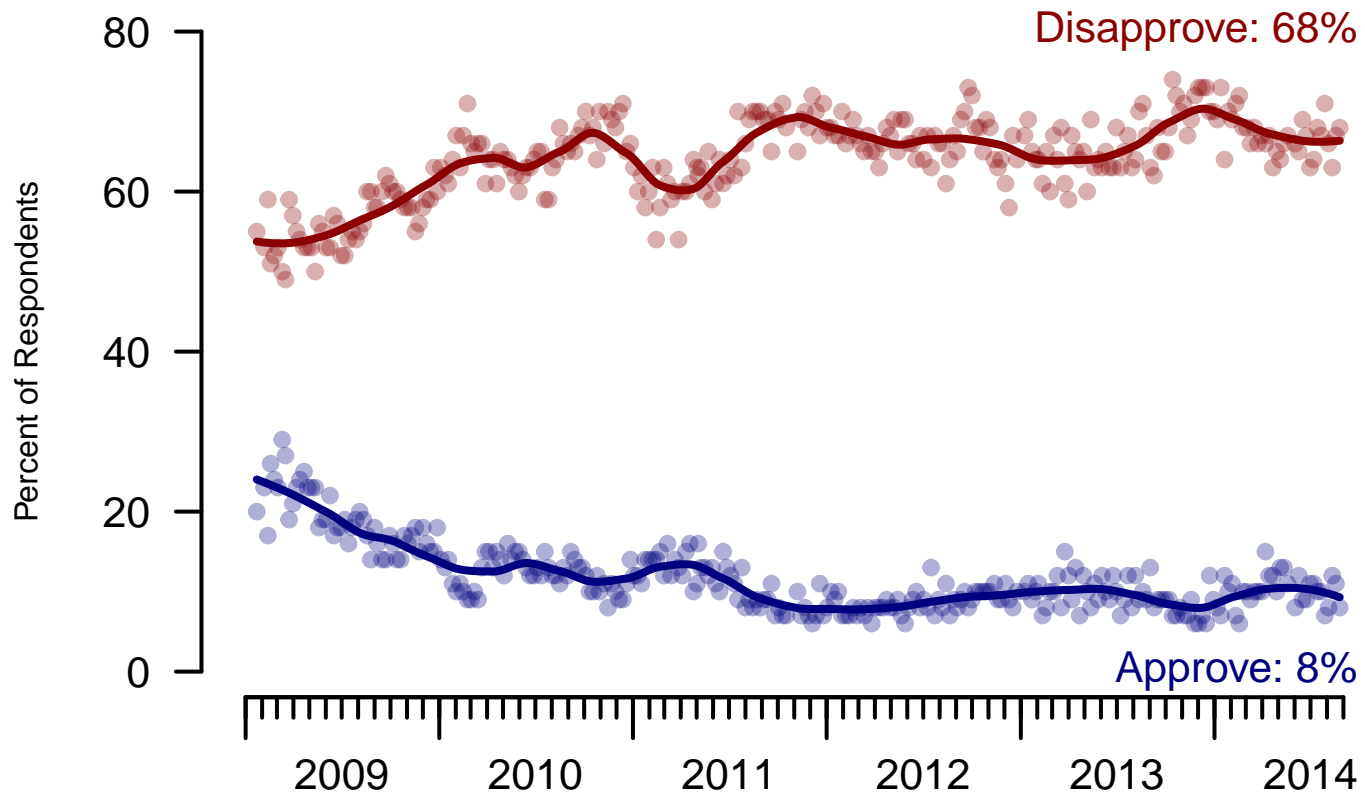


Figure 3: Congress Approval – All Adults

Congress Approval

"Do you approve of the way the
U.S. Congress is handling its job?"

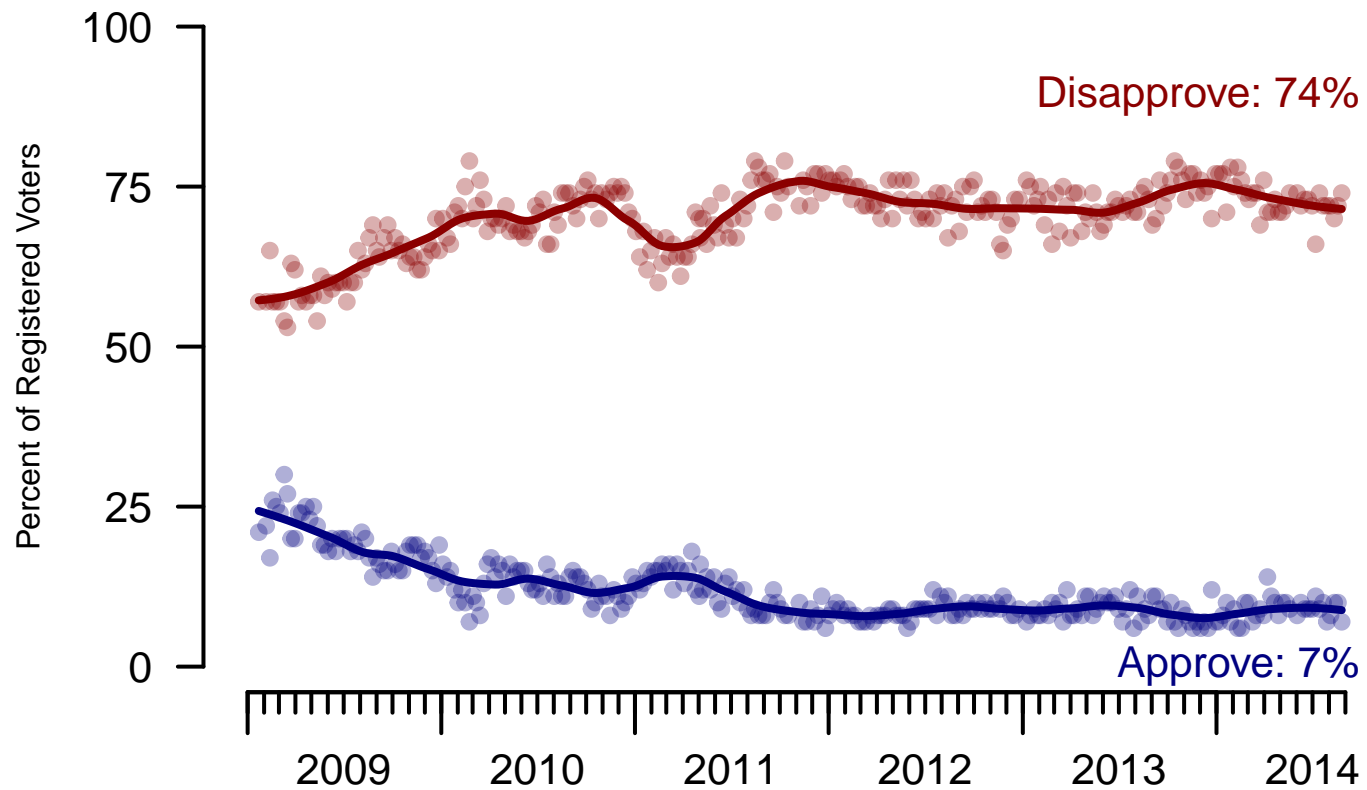


Figure 4: Congress Approval – Registered Voters

4. Approval of U.S. Congress – This Week – All Adults

Overall, do you approve or disapprove of the way that the United States Congress is handling its job?

	Age					Race				Region			
	Total	18-29	30-44	45-64	65+	White	Black	Hispanic	Other	North-east	Mid-west	South	West
Strongly approve	2%	2%	4%	2%	—	1%	5%	2%	1%	2%	1%	1%	4%
Somewhat approve	6%	8%	7%	4%	6%	6%	8%	4%	4%	6%	5%	6%	8%
Neither approve nor disapprove	15%	17%	18%	13%	10%	11%	19%	29%	22%	12%	15%	16%	15%
Somewhat disapprove	22%	17%	25%	25%	19%	25%	14%	10%	29%	25%	25%	20%	20%
Strongly disapprove	46%	44%	40%	50%	52%	48%	48%	40%	33%	38%	48%	49%	45%
Not sure	9%	12%	7%	7%	12%	9%	5%	15%	11%	17%	5%	8%	8%
Totals (Unweighted N)	100% (997)	100% (161)	100% (302)	100% (388)	100% (146)	100% (685)	100% (138)	100% (112)	100% (62)	100% (200)	100% (239)	100% (359)	100% (199)

	Party ID			Ideology			Gender		Family Income			
	Total	Dem	Ind	Rep	Lib	Mod	Con	Male	Female	Under 40	40-100	100+
Strongly approve	2%	3%	1%	2%	3%	2%	2%	3%	1%	3%	1%	0%
Somewhat approve	6%	9%	3%	8%	4%	6%	7%	6%	6%	7%	6%	8%
Neither approve nor disapprove	15%	14%	16%	14%	11%	20%	13%	13%	17%	17%	15%	7%
Somewhat disapprove	22%	20%	18%	36%	23%	17%	27%	22%	23%	22%	24%	18%
Strongly disapprove	46%	46%	53%	34%	55%	47%	40%	52%	40%	41%	46%	56%
Not sure	9%	8%	8%	7%	4%	8%	12%	5%	13%	9%	9%	10%
Totals (Unweighted N)	100% (997)	100% (350)	100% (323)	100% (240)	100% (238)	100% (354)	100% (344)	100% (480)	100% (517)	100% (373)	100% (368)	100% (125)

5. Direction of country – Historical

Would you say things in this country today are...

	All Adults		
	Right Direction	Wrong Track	Not Sure
August 23-25, 2014	24%	62%	15%
August 16-18, 2014	28%	60%	12%
August 9-11, 2014	25%	61%	15%
August 2-4, 2014	27%	56%	17%
July 26-28, 2014	23%	64%	13%
July 19-21, 2014	26%	59%	15%
July 12-14, 2014	25%	62%	13%
July 5-7, 2014	28%	57%	14%
June 28-30, 2014	28%	58%	13%
June 21-23, 2014	30%	59%	11%
One Year Ago	26%	60%	14%

	Registered Voters		
	Right Direction	Wrong Track	Not Sure
August 23-25, 2014	26%	63%	11%
August 16-18, 2014	30%	60%	11%
August 9-11, 2014	26%	63%	11%
August 2-4, 2014	29%	58%	13%
July 26-28, 2014	27%	63%	10%
July 19-21, 2014	27%	61%	12%
July 12-14, 2014	25%	63%	12%
July 5-7, 2014	28%	60%	13%
June 28-30, 2014	29%	59%	12%
June 21-23, 2014	29%	59%	11%
One Year Ago	28%	62%	11%

Direction of Country

"Would you say things in this country today are generally headed in the right direction or off on the wrong track?"

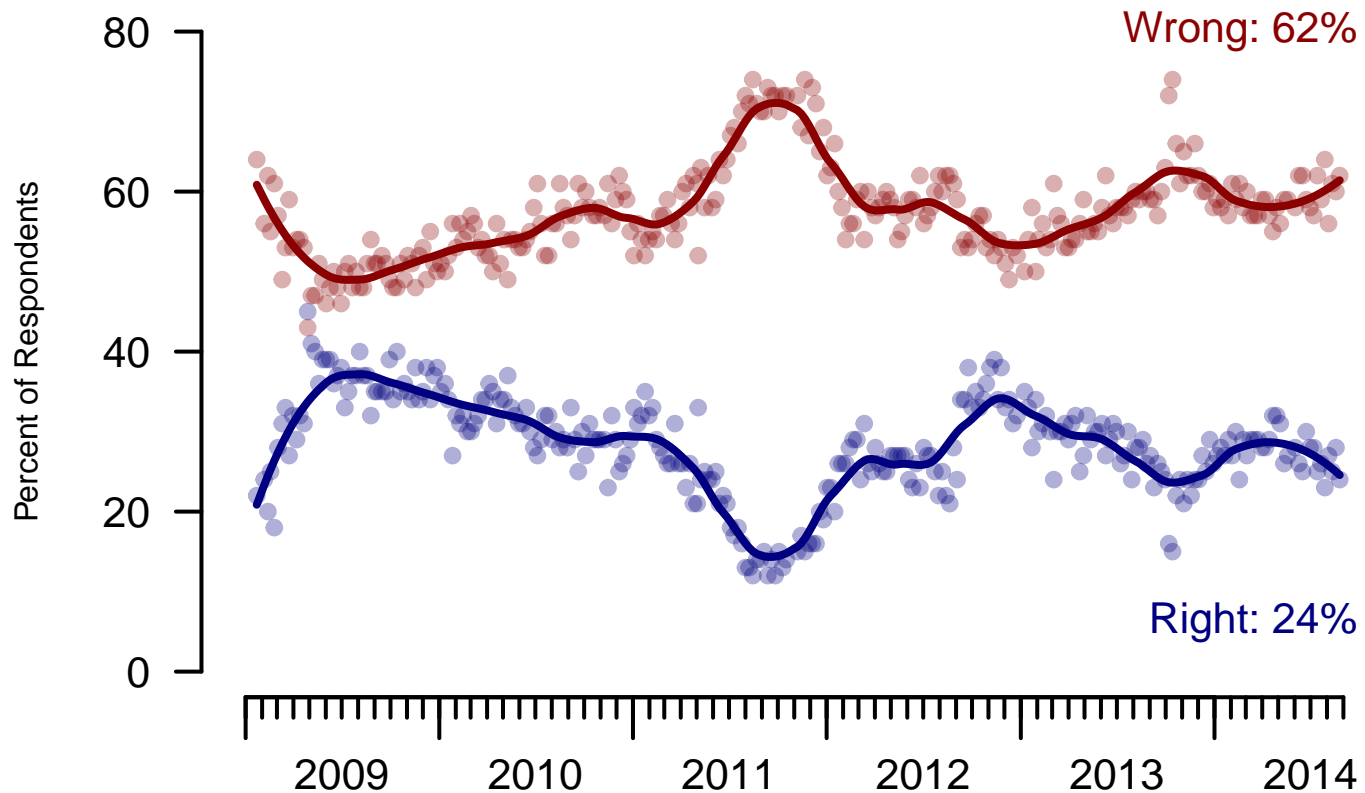


Figure 5: Direction of Country – All Adults

Direction of Country

"Would you say things in this country today are generally headed in the right direction or off on the wrong track?"

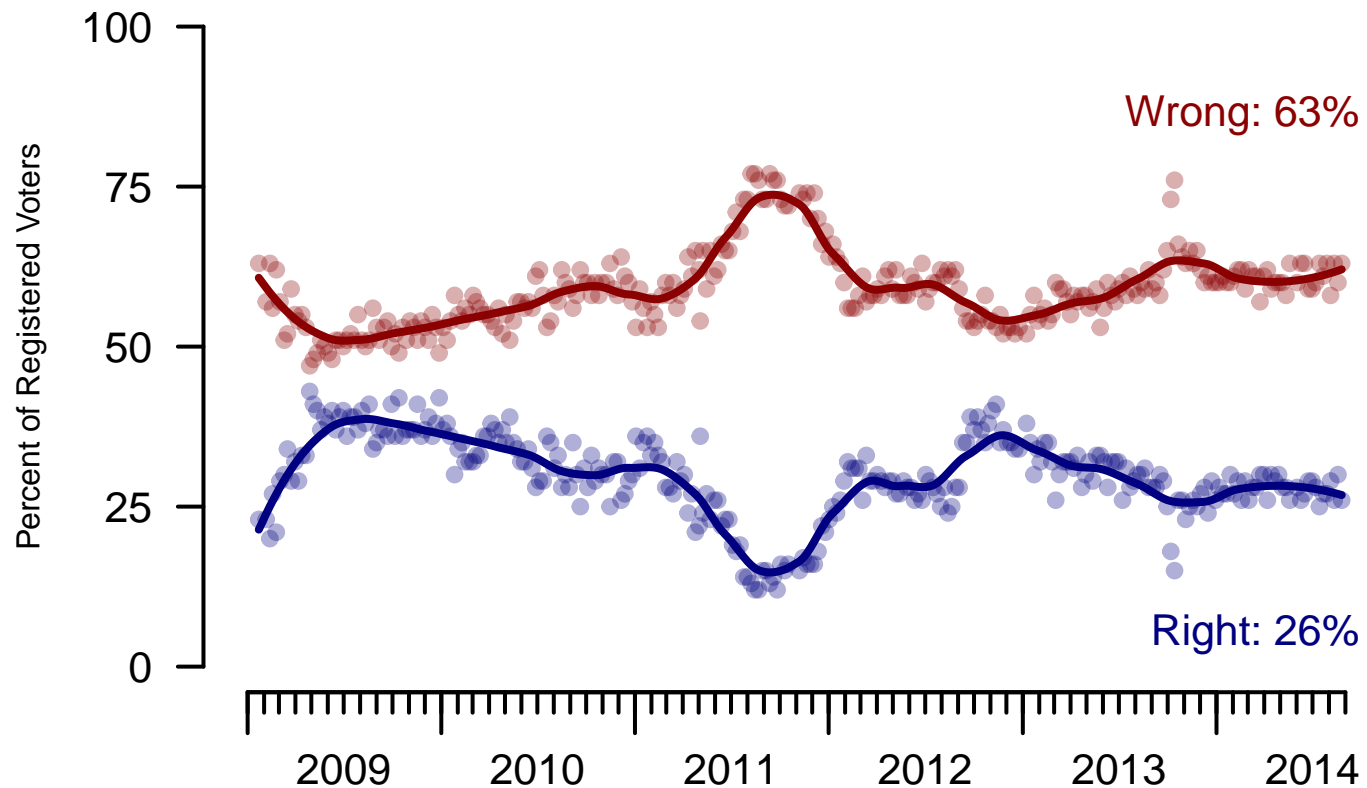


Figure 6: Direction of Country – Registered Voters

6. Direction of Country – This Week – All Adults

Would you say things in this country today are...

	Age					Race				Region			
	Total	18-29	30-44	45-64	65+	White	Black	Hispanic	Other	North-east	Mid-west	South	West
Generally headed in the right direction	24%	25%	24%	24%	19%	19%	44%	26%	23%	27%	23%	26%	19%
Off on the wrong track	62%	53%	61%	63%	73%	69%	36%	53%	58%	56%	63%	63%	63%
Not sure	15%	22%	15%	12%	8%	12%	19%	21%	19%	17%	14%	12%	18%
Totals (Unweighted N)	100% (1,000)	100% (162)	100% (303)	100% (388)	100% (147)	100% (687)	100% (138)	100% (113)	100% (62)	100% (200)	100% (240)	100% (360)	100% (200)

	Party ID				Ideology			Gender		Family Income		
	Total	Dem	Ind	Rep	Lib	Mod	Con	Male	Female	Under 40	40-100	100+
Generally headed in the right direction	24%	41%	21%	5%	44%	28%	8%	26%	22%	24%	23%	36%
Off on the wrong track	62%	41%	65%	89%	44%	50%	83%	61%	63%	59%	66%	61%
Not sure	15%	19%	14%	5%	12%	22%	9%	14%	15%	17%	12%	3%
Totals (Unweighted N)	100% (1,000)	100% (351)	100% (324)	100% (240)	100% (238)	100% (355)	100% (345)	100% (482)	100% (518)	100% (375)	100% (369)	100% (125)

Sponsorship	<i>The Economist</i>
Fieldwork	YouGov
Interviewing Dates	August 23-25, 2014
Target population	U.S. citizens, aged 18 and over.
Sampling method	Respondents were selected from YouGov's opt-in Internet panel using sample matching. A random sample (stratified by age, gender, race, education, and region) was selected from the 2010 American Community Study. Voter registration was imputed from the November 2010 Current Population Survey Registration and Voting Supplement. Religion, political interest, minor party identification, and non-placement on an ideology scale, were imputed from the 2008 Pew Religion in American Life Survey.
Weighting	The sample was weighted using propensity scores based on age, gender, race, education, news interest, voter registration, and non-placement on an ideology scale. The weights range from 0.04 to 5.03, with a mean of one and a standard deviation of 1.
Number of respondents	1,000
Margin of error	± 4.3% (adjusted for weighting)
Margin of error (Registered Voters)	± 4.7% (adjusted for weighting)
Survey mode	Web-based interviews
Full results	Available online at http://today.yougov.com/news/categories/economist/ .