

Interviewing: August 10-12, 2013  
Sample: 1000 Adults nationwide online  
747 registered voters nationwide online



806 D Street, SE  
Washington, DC 20003

Contact:  
Thomas Riehle  
Ph: (202) 544-2550

# *The Economist/YouGov* Poll

## Weekly Tracking

For immediate release

**1. Approval of Obama as President – Historical**

Do you approve or disapprove of the way Barack Obama is handling his job as President?

All Adults							
	<b>Total Approve</b>	<b>Total Disapprove</b>	Strongly Approve	Somewhat Approve	Somewhat Disapprove	Strongly Disapprove	Not Sure
August 10-12, 2013	43%	50%	18%	25%	14%	36%	6%
August 3-5, 2013	44%	52%	14%	30%	13%	39%	3%
July 27-29, 2013	41%	52%	13%	28%	13%	39%	8%
July 20-22, 2013	44%	51%	16%	28%	11%	40%	5%
July 13-15, 2013	42%	53%	17%	25%	14%	39%	5%
July 6-8, 2013	41%	50%	15%	26%	15%	35%	9%
June 29-July 1, 2013	43%	50%	16%	27%	14%	36%	6%
June 22-24, 2013	44%	50%	18%	26%	11%	39%	6%
June 15-17, 2013	43%	50%	17%	26%	14%	36%	7%
June 8-10, 2013	44%	49%	17%	27%	16%	33%	7%
One Year Ago	43%	50%	15%	28%	12%	38%	7%

Registered Voters							
	<b>Total Approve</b>	<b>Total Disapprove</b>	Strongly Approve	Somewhat Approve	Somewhat Disapprove	Strongly Disapprove	Not Sure
August 10-12, 2013	44%	53%	20%	24%	10%	43%	2%
August 3-5, 2013	42%	57%	16%	26%	13%	44%	2%
July 27-29, 2013	47%	52%	17%	30%	11%	41%	2%
July 20-22, 2013	41%	56%	17%	24%	12%	44%	3%
July 13-15, 2013	46%	53%	21%	25%	12%	41%	1%
July 6-8, 2013	43%	53%	18%	25%	12%	41%	5%
June 29-July 1, 2013	45%	51%	19%	26%	11%	40%	4%
June 22-24, 2013	46%	52%	20%	26%	12%	40%	2%
June 15-17, 2013	44%	54%	19%	25%	12%	42%	2%
June 8-10, 2013	46%	52%	18%	28%	12%	40%	3%
One Year Ago	44%	52%	18%	26%	11%	41%	5%

## Obama Approval

"Do you approve or disapprove of the way Barack Obama is handling his job as President?"

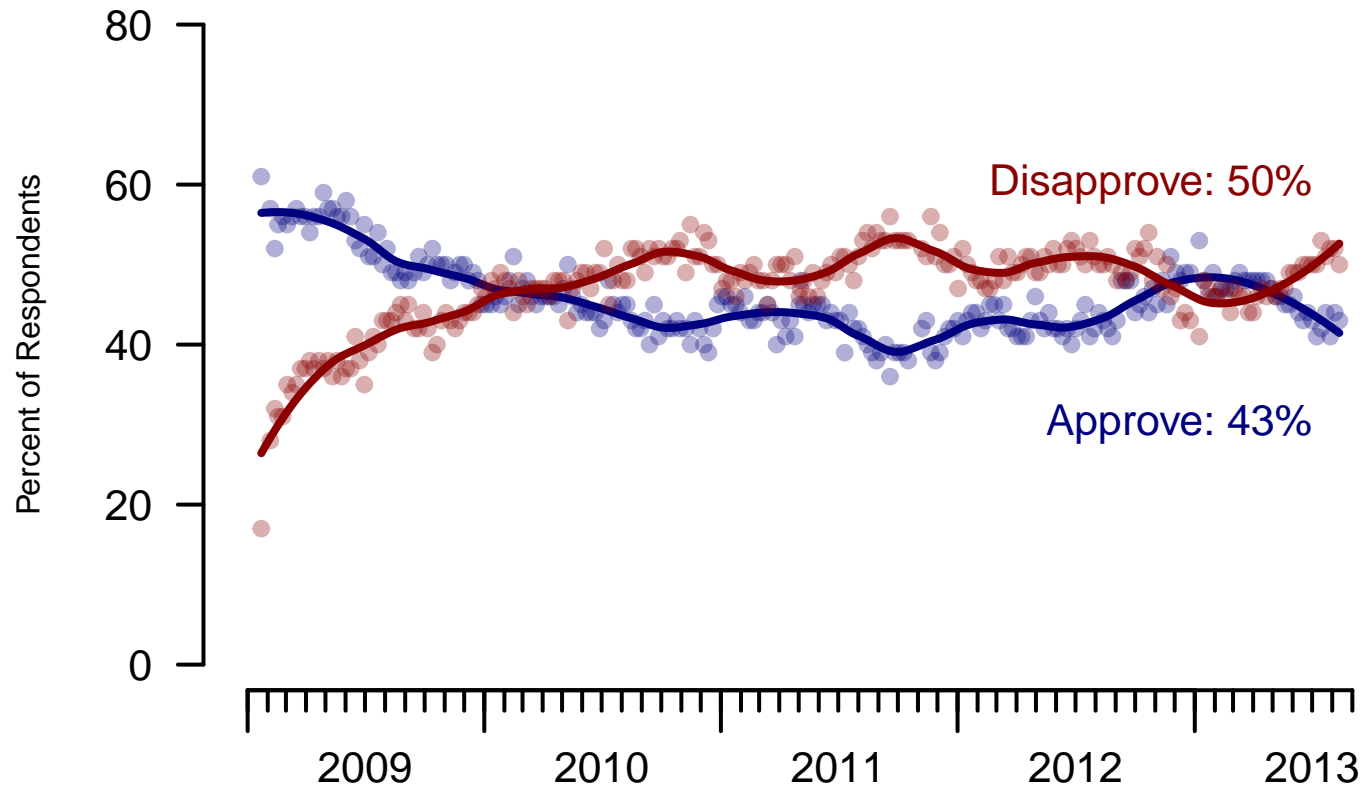


Figure 1: Obama Approval – All Adults

## Obama Approval

"Do you approve or disapprove of the way Barack Obama is handling his job as President?"

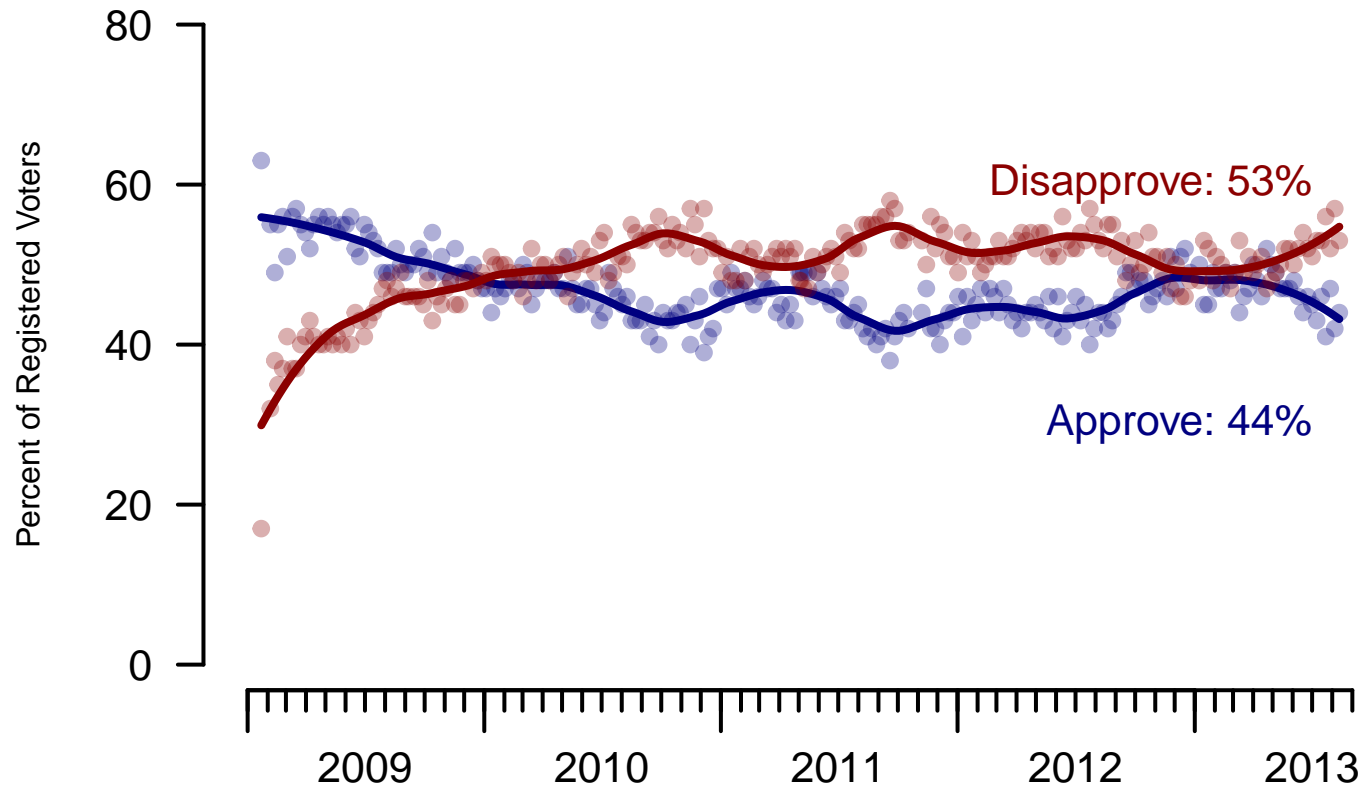


Figure 2: Obama Approval – Registered Voters

**2. Approval of Obama as President – This Week – All Adults**

Do you approve or disapprove of the way Barack Obama is handling his job as President?

	Age					Race			Gender		Education		
	Total	18-29	30-44	45-64	65+	White	Black	Hispanic	Male	Female	HS or less	Some college	College graduate
Strongly approve	18%	14%	13%	26%	17%	12%	52%	12%	17%	18%	21%	16%	15%
Somewhat approve	25%	33%	33%	18%	11%	22%	30%	41%	21%	30%	22%	24%	33%
Somewhat disapprove	14%	19%	15%	10%	12%	15%	7%	13%	13%	15%	11%	18%	13%
Strongly disapprove	36%	26%	28%	43%	59%	44%	3%	28%	41%	32%	39%	33%	37%
Not sure	6%	8%	12%	3%	0%	6%	6%	6%	8%	5%	7%	10%	2%
Totals (Unweighted N)	100% (999)	100% (126)	100% (365)	100% (362)	100% (146)	100% (803)	100% (114)	100% (82)	100% (465)	100% (534)	100% (312)	100% (350)	100% (337)

	Party ID				Ideology			Region				Family Income		
	Total	Dem	Rep	Ind	Lib	Mod	Con	North-east	Mid-west	South	West	Under 40	40-100	100+
Strongly approve	18%	38%	1%	9%	34%	21%	6%	20%	22%	18%	10%	22%	15%	10%
Somewhat approve	25%	39%	3%	29%	46%	34%	7%	30%	23%	21%	33%	27%	24%	28%
Somewhat disapprove	14%	12%	20%	12%	9%	17%	16%	16%	12%	15%	12%	14%	18%	10%
Strongly disapprove	36%	6%	73%	44%	4%	26%	66%	26%	36%	39%	41%	29%	40%	51%
Not sure	6%	6%	2%	6%	6%	3%	5%	8%	7%	7%	4%	7%	4%	1%
Totals (Unweighted N)	100% (999)	100% (378)	100% (255)	100% (334)	100% (258)	100% (353)	100% (353)	100% (165)	100% (190)	100% (389)	100% (255)	100% (346)	100% (388)	100% (81)

**3. Approval of U.S. Congress – Historical**

Overall, do you approve or disapprove of the way that the United States Congress is handling its job?

All Adults

	<b>Total Approve</b>	<b>Total Disapprove</b>	Strongly Approve	Somewhat Approve	Neutral	Somewhat Disapprove	Strongly Disapprove	Not Sure
August 10-12, 2013	9%	70%	1%	8%	13%	24%	46%	8%
August 3-5, 2013	12%	64%	4%	8%	18%	16%	48%	6%
July 27-29, 2013	8%	63%	2%	6%	16%	19%	44%	14%
July 20-22, 2013	12%	67%	3%	9%	13%	25%	42%	8%
July 13-15, 2013	9%	65%	2%	7%	18%	21%	44%	9%
July 6-8, 2013	7%	63%	1%	6%	16%	22%	41%	14%
June 29-July 1, 2013	10%	68%	1%	9%	12%	27%	41%	10%
June 22-24, 2013	12%	63%	2%	10%	14%	20%	43%	11%
June 15-17, 2013	9%	63%	2%	7%	18%	25%	38%	9%
June 8-10, 2013	10%	65%	2%	8%	18%	23%	42%	8%
One Year Ago	11%	61%	2%	9%	19%	22%	39%	10%

Registered Voters

	<b>Total Approve</b>	<b>Total Disapprove</b>	Strongly Approve	Somewhat Approve	Neutral	Somewhat Disapprove	Strongly Disapprove	Not Sure
August 10-12, 2013	7%	74%	0%	7%	12%	22%	52%	6%
August 3-5, 2013	11%	71%	2%	9%	14%	19%	52%	5%
July 27-29, 2013	6%	71%	1%	5%	15%	20%	51%	7%
July 20-22, 2013	12%	73%	4%	8%	10%	25%	48%	5%
July 13-15, 2013	9%	72%	3%	6%	12%	23%	49%	6%
July 6-8, 2013	7%	71%	1%	6%	13%	23%	48%	9%
June 29-July 1, 2013	9%	72%	1%	8%	12%	23%	49%	7%
June 22-24, 2013	11%	73%	2%	9%	11%	24%	49%	5%
June 15-17, 2013	10%	71%	3%	7%	13%	26%	45%	6%
June 8-10, 2013	10%	71%	2%	8%	15%	25%	46%	4%
One Year Ago	11%	67%	1%	10%	15%	24%	43%	7%

### Congress Approval

"Do you approve of the way the U.S. Congress is handling its job?"

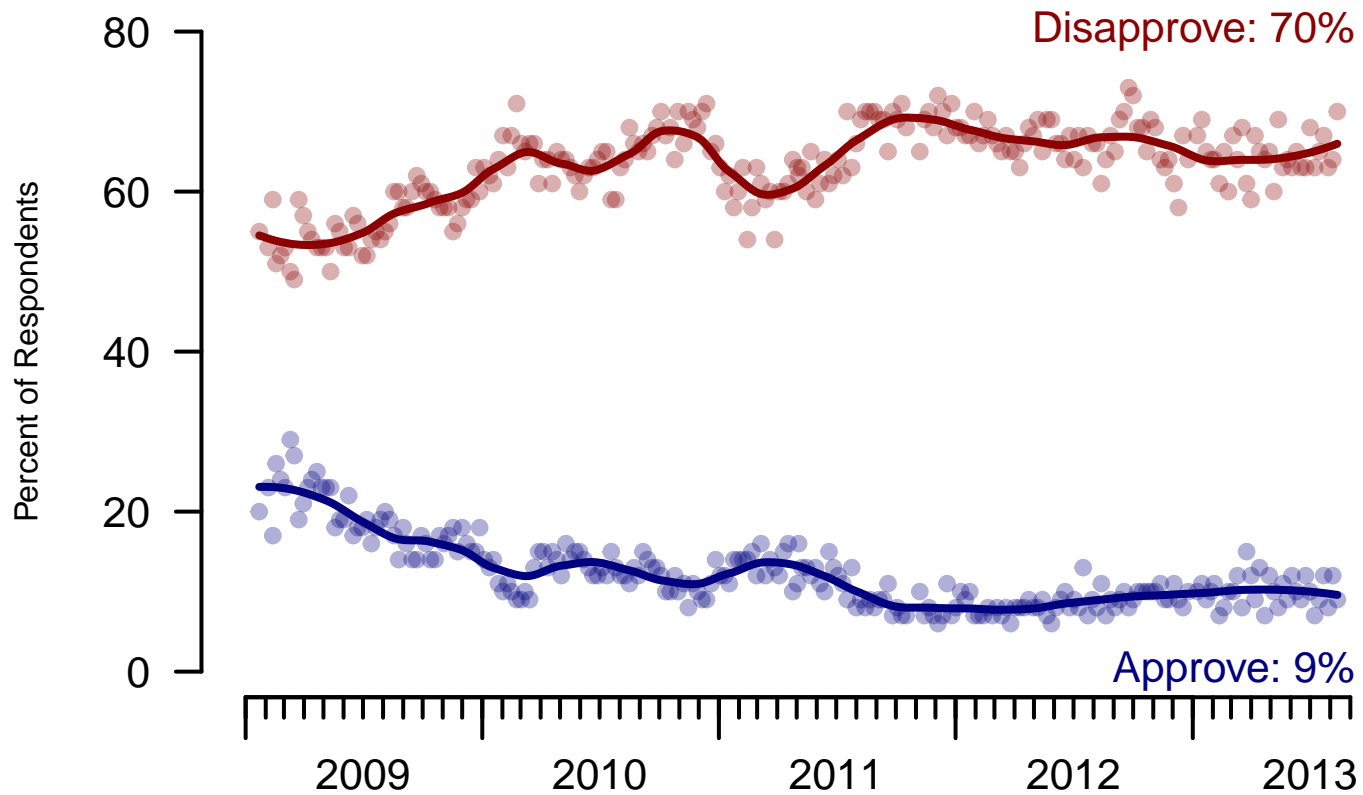


Figure 3: Congress Approval – All Adults

### Congress Approval

"Do you approve of the way the  
U.S. Congress is handling its job?"

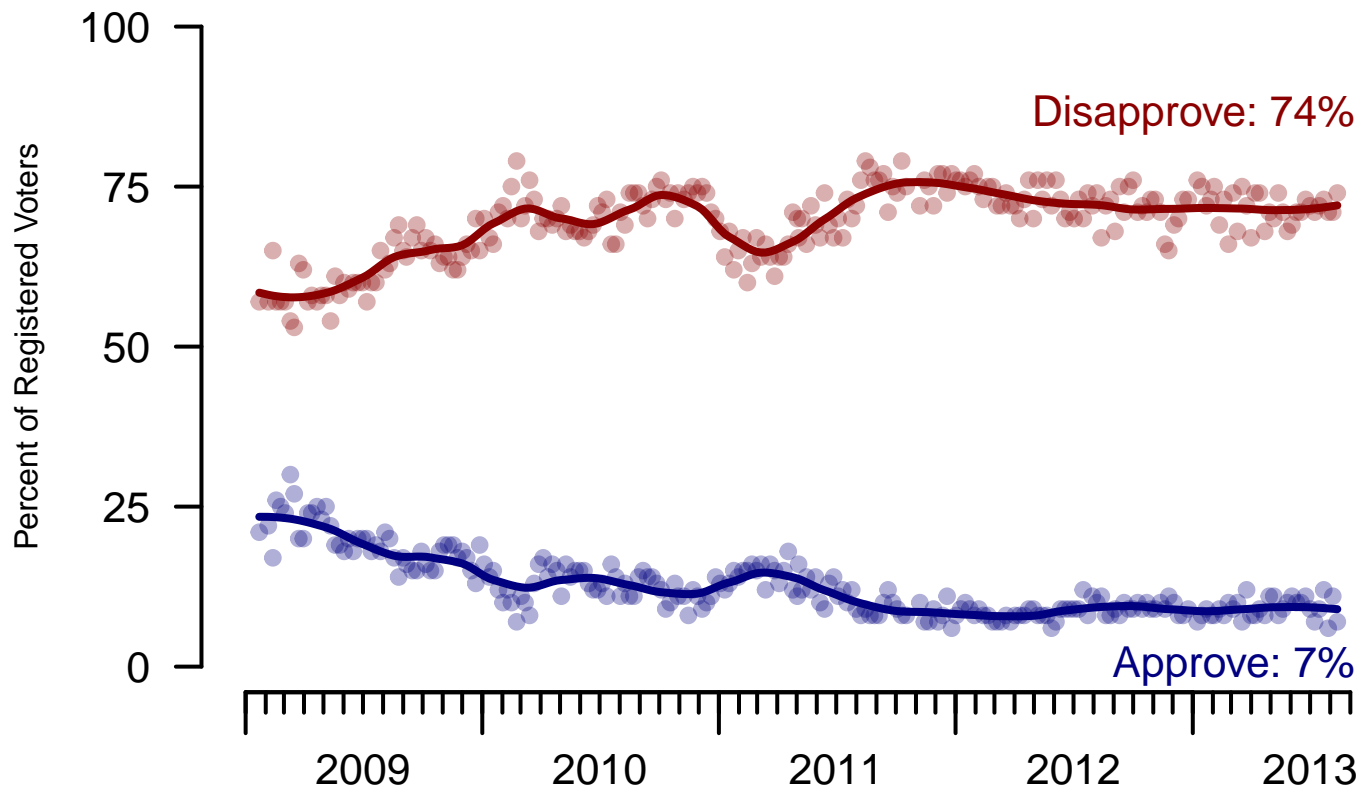


Figure 4: Congress Approval – Registered Voters



**4. Approval of U.S. Congress – This Week – All Adults**

Overall, do you approve or disapprove of the way that the United States Congress is handling its job?

	Total	Age				Race			Gender		Education		
		18-29	30-44	45-64	65+	White	Black	Hispanic	Male	Female	HS or less	Some college	College graduate
Strongly approve	1%	—	2%	1%	—	1%	—	—	2%	0%	0%	2%	1%
Somewhat approve	8%	12%	5%	7%	7%	7%	9%	11%	6%	9%	9%	8%	6%
Neither approve nor disapprove	13%	13%	15%	13%	7%	11%	21%	19%	12%	14%	15%	11%	13%
Somewhat disapprove	24%	17%	27%	26%	22%	26%	17%	17%	21%	27%	19%	29%	24%
Strongly disapprove	46%	44%	40%	49%	56%	48%	36%	47%	56%	36%	46%	41%	53%
Not sure	8%	13%	10%	4%	7%	7%	17%	7%	3%	14%	11%	10%	3%
Totals (Unweighted N)	100% (999)	100% (125)	100% (365)	100% (362)	100% (147)	100% (803)	100% (114)	100% (82)	100% (466)	100% (533)	100% (313)	100% (349)	100% (337)

	Total	Party ID			Ideology			Region				Family Income		
		Dem	Rep	Ind	Lib	Mod	Con	North-east	Mid-west	South	West	Under 40	40-100	100+
Strongly approve	1%	0%	3%	0%	3%	—	1%	0%	0%	2%	0%	—	2%	—
Somewhat approve	8%	8%	7%	8%	7%	6%	10%	6%	13%	6%	6%	9%	8%	4%
Neither approve nor disapprove	13%	13%	12%	14%	14%	15%	12%	11%	13%	15%	11%	14%	13%	23%
Somewhat disapprove	24%	17%	42%	18%	15%	20%	33%	17%	20%	27%	27%	24%	28%	34%
Strongly disapprove	46%	48%	33%	56%	58%	49%	41%	52%	46%	41%	50%	37%	48%	38%
Not sure	8%	13%	3%	3%	3%	10%	4%	14%	8%	8%	5%	16%	1%	1%
Totals (Unweighted N)	100% (999)	100% (378)	100% (256)	100% (334)	100% (258)	100% (352)	100% (354)	100% (165)	100% (191)	100% (389)	100% (254)	100% (346)	100% (388)	100% (81)

**5. Direction of country – Historical**

Would you say things in this country today are...

	All Adults		
	Right Track	Wrong Direction	Not Sure
August 10-12, 2013	28%	59%	13%
August 3-5, 2013	28%	60%	11%
July 27-29, 2013	24%	59%	17%
July 20-22, 2013	30%	57%	13%
July 13-15, 2013	27%	58%	15%
July 6-8, 2013	26%	58%	17%
June 29-July 1, 2013	30%	58%	12%
June 22-24, 2013	31%	56%	13%
June 15-17, 2013	29%	57%	14%
June 8-10, 2013	27%	62%	12%
One Year Ago	22%	62%	17%

	Registered Voters		
	Right Track	Wrong Direction	Not Sure
August 10-12, 2013	30%	60%	10%
August 3-5, 2013	30%	58%	11%
July 27-29, 2013	29%	59%	12%
July 20-22, 2013	28%	61%	11%
July 13-15, 2013	31%	58%	11%
July 6-8, 2013	26%	60%	14%
June 29-July 1, 2013	32%	59%	9%
June 22-24, 2013	32%	57%	11%
June 15-17, 2013	32%	58%	10%
June 8-10, 2013	28%	60%	12%
One Year Ago	24%	62%	14%

## Direction of Country

"Would you say things in this country today are generally headed in the right direction or off on the wrong track?"

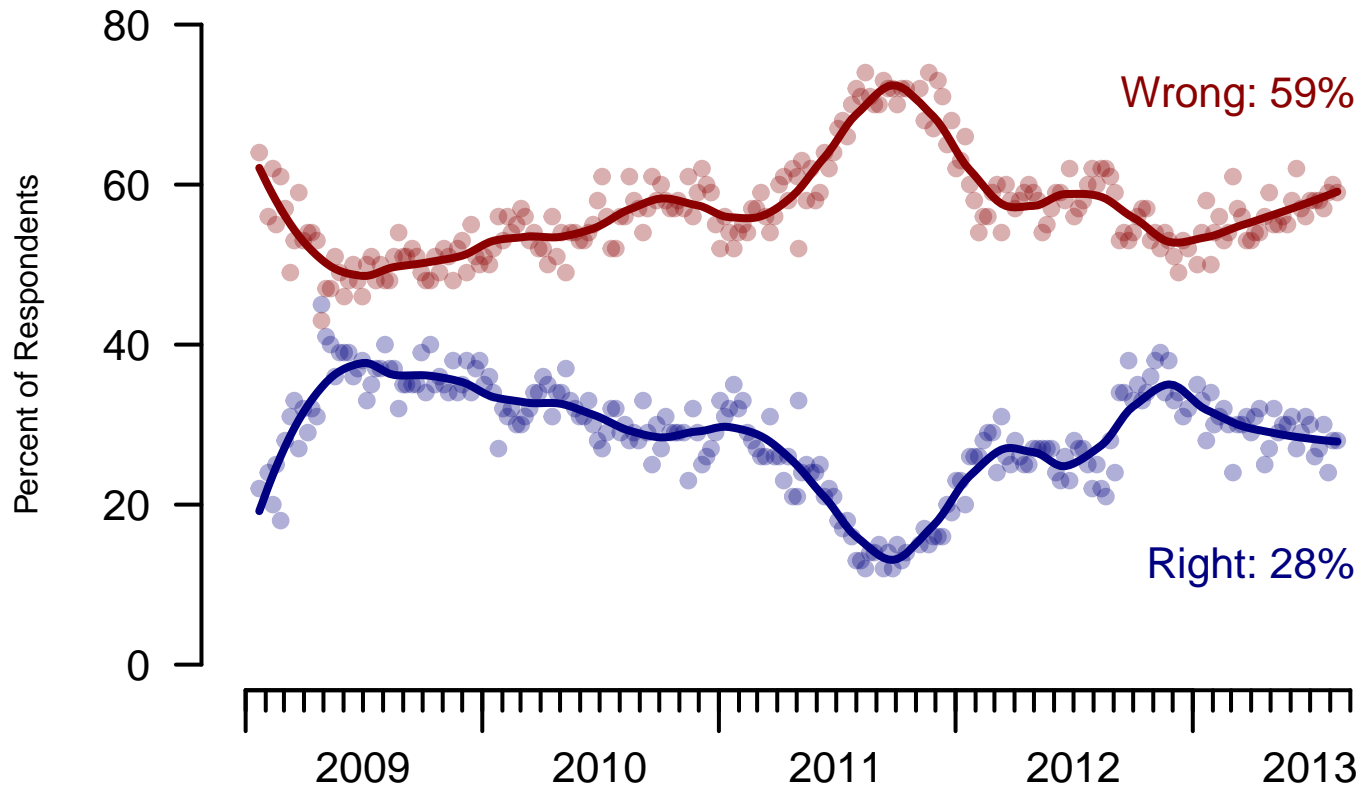


Figure 5: Direction of Country – All Adults

## Direction of Country

"Would you say things in this country today are generally headed in the right direction or off on the wrong track?"

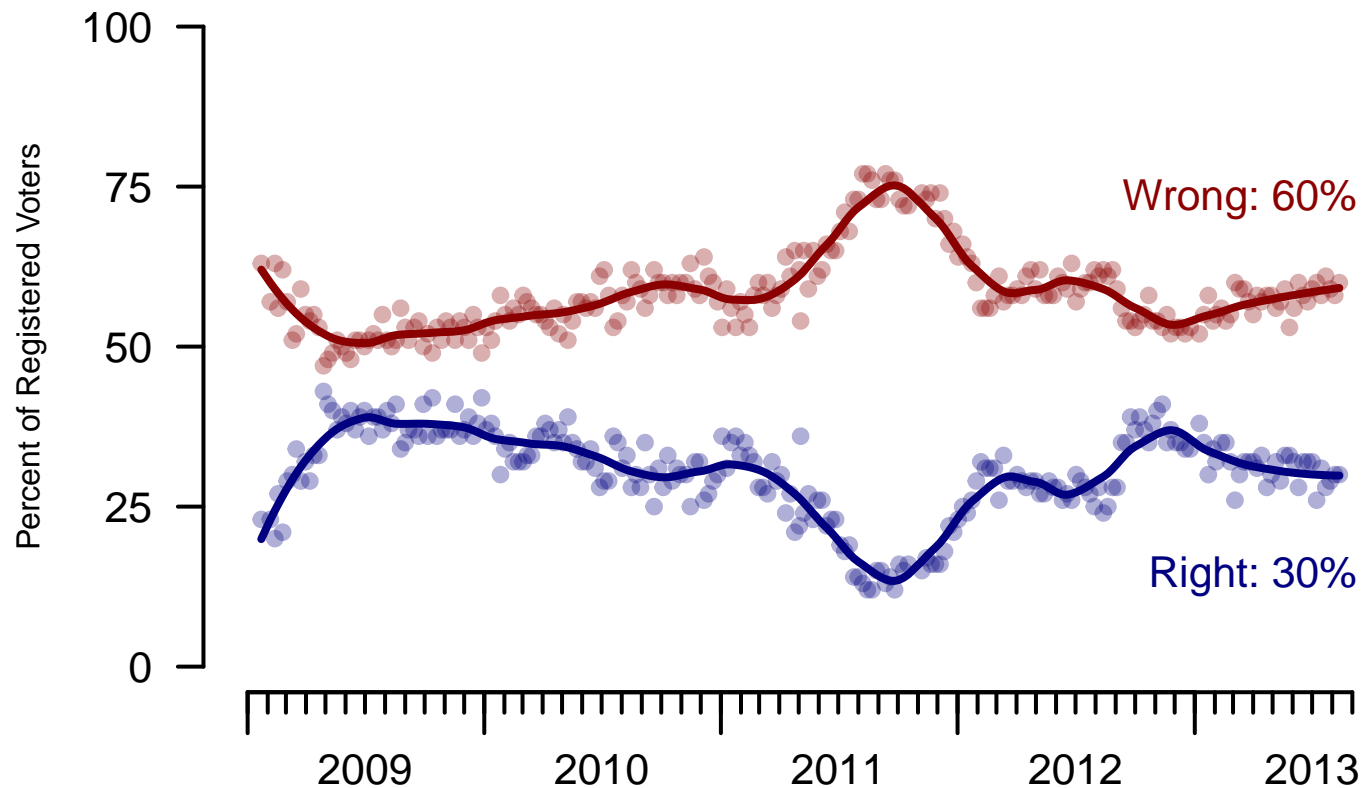


Figure 6: Direction of Country – Registered Voters

**6. Direction of Country – This Week – All Adults**

Would you say things in this country today are...

	Total	Age				Race			Gender		Education		
		18-29	30-44	45-64	65+	White	Black	Hispanic	Male	Female	HS or less	Some college	College graduate
Generally headed in the right direction	28%	26%	29%	31%	25%	24%	56%	24%	25%	31%	27%	26%	33%
Off on the wrong track	59%	53%	53%	63%	70%	66%	22%	56%	61%	57%	66%	55%	52%
Not sure	13%	21%	18%	6%	5%	10%	23%	20%	14%	12%	7%	19%	15%
Totals (Unweighted N)	100% (1,000)	100% (126)	100% (365)	100% (362)	100% (147)	100% (804)	100% (114)	100% (82)	100% (466)	100% (534)	100% (313)	100% (350)	100% (337)

	Total	Party ID			Ideology			Region				Family Income		
		Dem	Rep	Ind	Lib	Mod	Con	North-east	Mid-west	South	West	Under 40	40-100	100+
Generally headed in the right direction	28%	50%	6%	21%	48%	37%	12%	26%	34%	28%	24%	30%	25%	27%
Off on the wrong track	59%	35%	90%	64%	37%	47%	82%	55%	57%	59%	65%	56%	63%	67%
Not sure	13%	15%	4%	15%	15%	16%	6%	19%	9%	14%	11%	14%	13%	6%
Totals (Unweighted N)	100% (1,000)	100% (378)	100% (256)	100% (334)	100% (258)	100% (353)	100% (354)	100% (165)	100% (191)	100% (389)	100% (255)	100% (346)	100% (388)	100% (81)

<b>Sponsorship</b>	<i>The Economist</i>
<b>Fieldwork</b>	YouGov
<b>Interviewing Dates</b>	August 10-12, 2013
<b>Target population</b>	U.S. citizens, aged 18 and over.
<b>Sampling method</b>	Respondents were selected from YouGov's panel using sample matching. A random sample (stratified by age, gender, race, education, and region) was selected from the 2005–2007 American Community Study. Voter registration, turnout, religion, news interest, minor party identification, and non-placement on an ideology scale, were imputed from the 2008 Current Population Survey Registration and Voting Supplement and the Pew Religion in American Life Survey. Matching respondents were selected from the YouGov panel, an opt-in Internet panel.
<b>Weighting</b>	The sample was weighted using propensity scores based on age, gender, race, education, news interest, voter registration, and non-placement on an ideology scale. The weights range from 0.07 to 7.27, with a mean of one and a standard deviation of 1.2.
<b>Number of respondents</b>	1,000
<b>Margin of error</b>	± 4.8% (adjusted for weighting)
<b>Margin of error (Registered Voters)</b>	± 5% (adjusted for weighting)
<b>Survey mode</b>	Web-based interviews
<b>Full results</b>	Available online at <a href="http://today.yougov.com/news/categories/economist/">http://today.yougov.com/news/categories/economist/</a> .