

Interviewing: February 4 - 7, 2018
Sample: 1500 Adults nationwide online
1006 registered voters nationwide online



The Economist/YouGov Poll

Weekly Tracking

For immediate release

1. Presidential Job Approval – Historical

Do you approve or disapprove of the way [President's name] is handling his job as President?

	All Adults						
	Total Approve	Total Disapprove	Strongly Approve	Somewhat Approve	Somewhat Disapprove	Strongly Disapprove	Not Sure
February 2-6, 2018	40%	52%	23%	17%	11%	41%	9%
January 26-30, 2018	39%	51%	21%	18%	11%	40%	10%
January 19-23, 2018	39%	52%	21%	18%	9%	43%	9%
January 13-15, 2018	42%	52%	21%	21%	12%	40%	6%
January 6-8, 2018	38%	51%	21%	17%	9%	42%	10%
December 30, 2017 - January 1, 2018	38%	52%	21%	17%	12%	40%	9%
December 23-25, 2017	38%	52%	22%	16%	10%	42%	9%
December 16-18, 2017	38%	52%	20%	18%	12%	40%	10%
December 9-11, 2017	38%	51%	20%	18%	9%	42%	12%
December 2-4, 2017	37%	51%	20%	17%	11%	40%	11%
One Year Ago	41%	48%	25%	16%	11%	37%	11%

	Registered Voters						
	Total Approve	Total Disapprove	Strongly Approve	Somewhat Approve	Somewhat Disapprove	Strongly Disapprove	Not Sure
February 2-6, 2018	45%	53%	29%	16%	8%	45%	3%
January 26-30, 2018	44%	53%	28%	16%	8%	45%	4%
January 19-23, 2018	43%	54%	26%	17%	7%	47%	3%
January 13-15, 2018	42%	54%	26%	16%	10%	44%	3%
January 6-8, 2018	42%	54%	26%	16%	9%	45%	4%
December 30, 2017 - January 1, 2018	43%	54%	26%	17%	10%	44%	3%
December 23-25, 2017	43%	53%	26%	17%	8%	45%	4%
December 16-18, 2017	41%	55%	25%	16%	9%	46%	3%
December 9-11, 2017	41%	54%	23%	18%	9%	45%	4%
December 2-4, 2017	43%	52%	23%	20%	9%	43%	5%
One Year Ago	44%	49%	29%	15%	8%	41%	6%

Presidential Job Approval

"Do you approve or disapprove of the way Donald Trump is handling his job as President?"

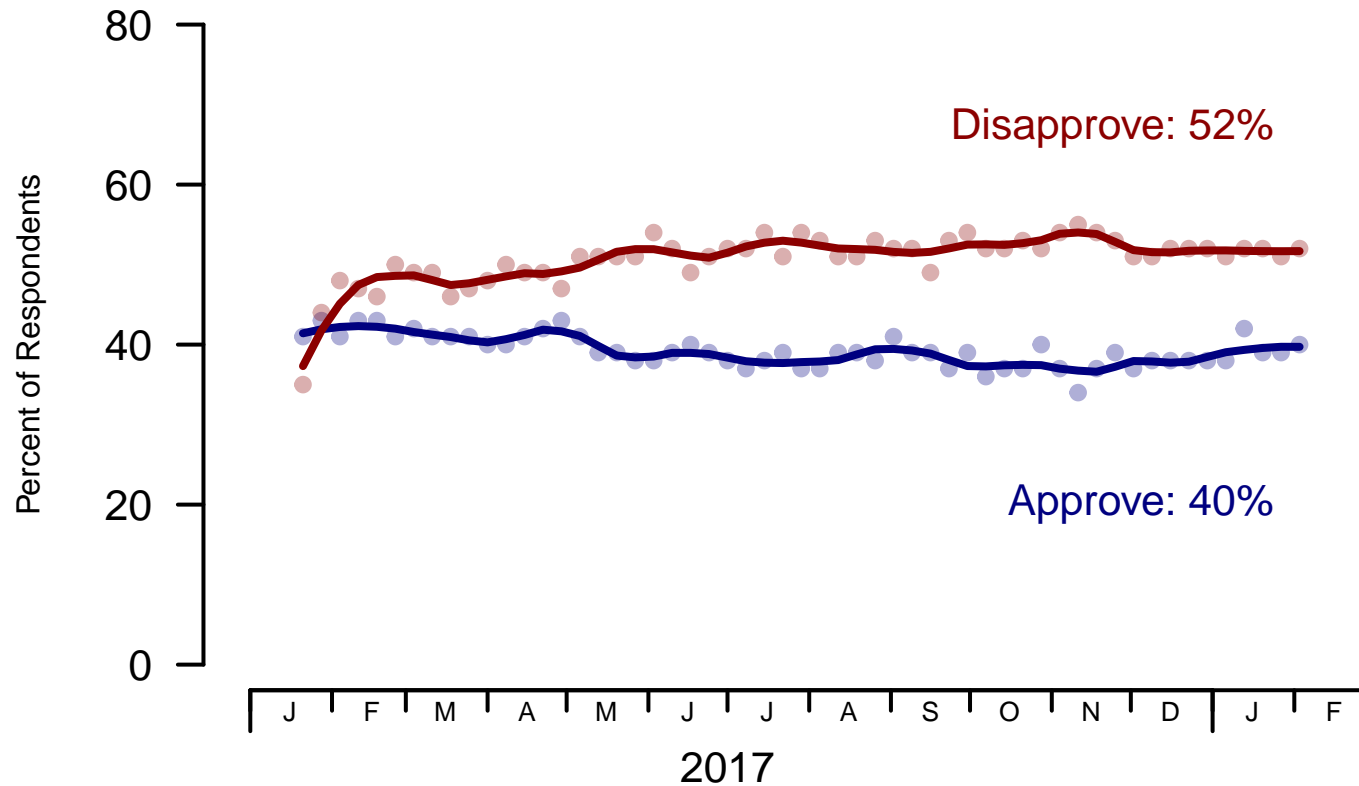


Figure 1: Trump Approval – All Adults

Presidential Job Approval

"Do you approve or disapprove of the way Donald Trump is handling his job as President?"

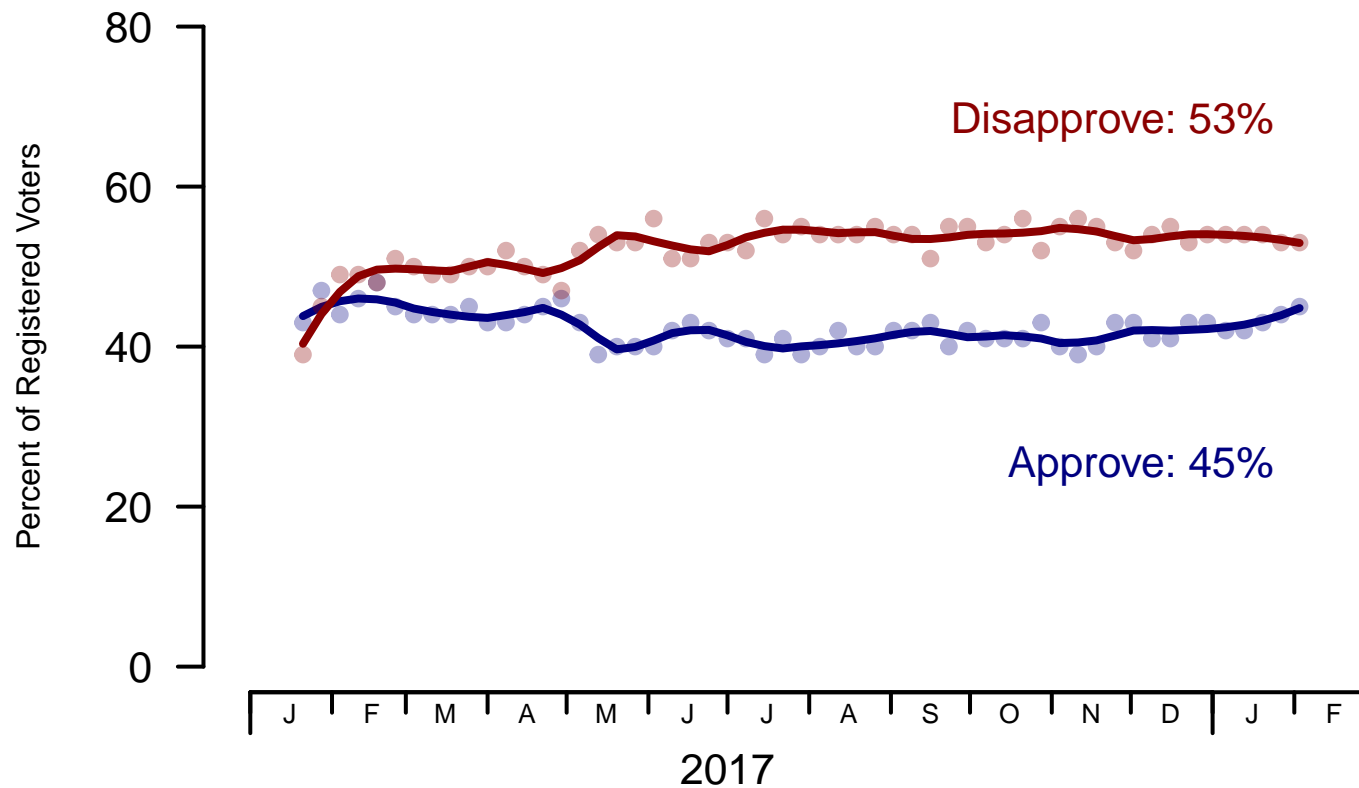


Figure 2: Trump Approval – Registered Voters

2. President Trump Job Approval – This Week – All Adults

Do you approve or disapprove of the way Donald Trump is handling his job as President?

	Age (4 category)					Race			Census Region			
	Total	Under 30	30-44	45-64	65+	White	Black	Hispanic	North-east	Mid-west	South	West
Strongly approve	23%	5%	16%	27%	43%	27%	3%	15%	21%	24%	22%	26%
Somewhat approve	17%	17%	21%	17%	11%	18%	10%	15%	14%	19%	18%	14%
Somewhat disapprove	11%	17%	11%	10%	7%	11%	12%	13%	13%	11%	12%	7%
Strongly disapprove	41%	43%	40%	41%	37%	36%	63%	43%	41%	41%	40%	43%
Not sure	9%	17%	11%	5%	3%	7%	12%	13%	11%	6%	8%	10%
Totals (Unweighted N)	100% (1,500)	100% (168)	100% (386)	100% (636)	100% (310)	100% (1,229)	100% (152)	100% (119)	100% (302)	100% (341)	100% (564)	100% (293)

	Party ID			Ideology			Gender		Family Income (3 category)			Prefer not to say	
	Total	Dem	Ind	Rep	Lib	Mod	Con	Male	Female	Under 50	50-100		100+
Strongly approve	23%	4%	21%	51%	4%	12%	52%	26%	19%	18%	25%	27%	30%
Somewhat approve	17%	5%	18%	30%	4%	16%	28%	18%	16%	17%	19%	16%	12%
Somewhat disapprove	11%	12%	12%	8%	10%	17%	5%	11%	12%	15%	10%	5%	6%
Strongly disapprove	41%	73%	34%	8%	80%	40%	11%	38%	43%	39%	42%	50%	36%
Not sure	9%	6%	14%	3%	2%	15%	5%	7%	10%	11%	3%	2%	15%
Totals (Unweighted N)	100% (1,500)	100% (531)	100% (585)	100% (384)	100% (432)	100% (575)	100% (493)	100% (646)	100% (854)	100% (627)	100% (428)	100% (220)	100% (225)

3. Approval of U.S. Congress – Historical

Overall, do you approve or disapprove of the way that the United States Congress is handling its job?

	All Adults							
	Total Approve	Total Disapprove	Strongly Approve	Somewhat Approve	Neutral	Somewhat Disapprove	Strongly Disapprove	Not Sure
February 2-6, 2018	12%	61%	3%	9%	12%	22%	39%	15%
January 26-30, 2018	11%	63%	3%	8%	12%	25%	38%	15%
January 19-23, 2018	10%	68%	3%	7%	12%	24%	44%	10%
January 13-15, 2018	12%	61%	3%	9%	17%	24%	37%	11%
January 6-8, 2018	12%	59%	2%	10%	13%	21%	38%	16%
December 30, 2017 - January 1, 2018	14%	56%	3%	11%	16%	20%	36%	14%
December 23-25, 2017	13%	57%	3%	10%	16%	19%	38%	15%
December 16-18, 2017	12%	58%	3%	9%	15%	22%	36%	16%
December 9-11, 2017	10%	61%	2%	8%	15%	23%	38%	15%
December 2-4, 2017	12%	56%	3%	9%	15%	18%	38%	17%
One Year Ago	15%	48%	4%	11%	17%	21%	27%	19%

	Registered Voters							
	Total Approve	Total Disapprove	Strongly Approve	Somewhat Approve	Neutral	Somewhat Disapprove	Strongly Disapprove	Not Sure
February 2-6, 2018	11%	70%	2%	9%	12%	24%	46%	7%
January 26-30, 2018	9%	74%	2%	7%	11%	27%	47%	7%
January 19-23, 2018	9%	76%	2%	7%	10%	25%	51%	4%
January 13-15, 2018	11%	69%	2%	9%	14%	25%	44%	5%
January 6-8, 2018	14%	67%	2%	12%	12%	25%	42%	8%
December 30, 2017 - January 1, 2018	15%	64%	3%	12%	14%	23%	41%	6%
December 23-25, 2017	14%	64%	2%	12%	14%	21%	43%	7%
December 16-18, 2017	12%	68%	3%	9%	12%	24%	44%	8%
December 9-11, 2017	12%	69%	2%	10%	13%	27%	42%	6%
December 2-4, 2017	11%	68%	3%	8%	12%	22%	46%	9%
One Year Ago	16%	53%	5%	11%	16%	23%	30%	14%

Congress Approval

"Do you approve of the way the U.S. Congress is handling its job?"

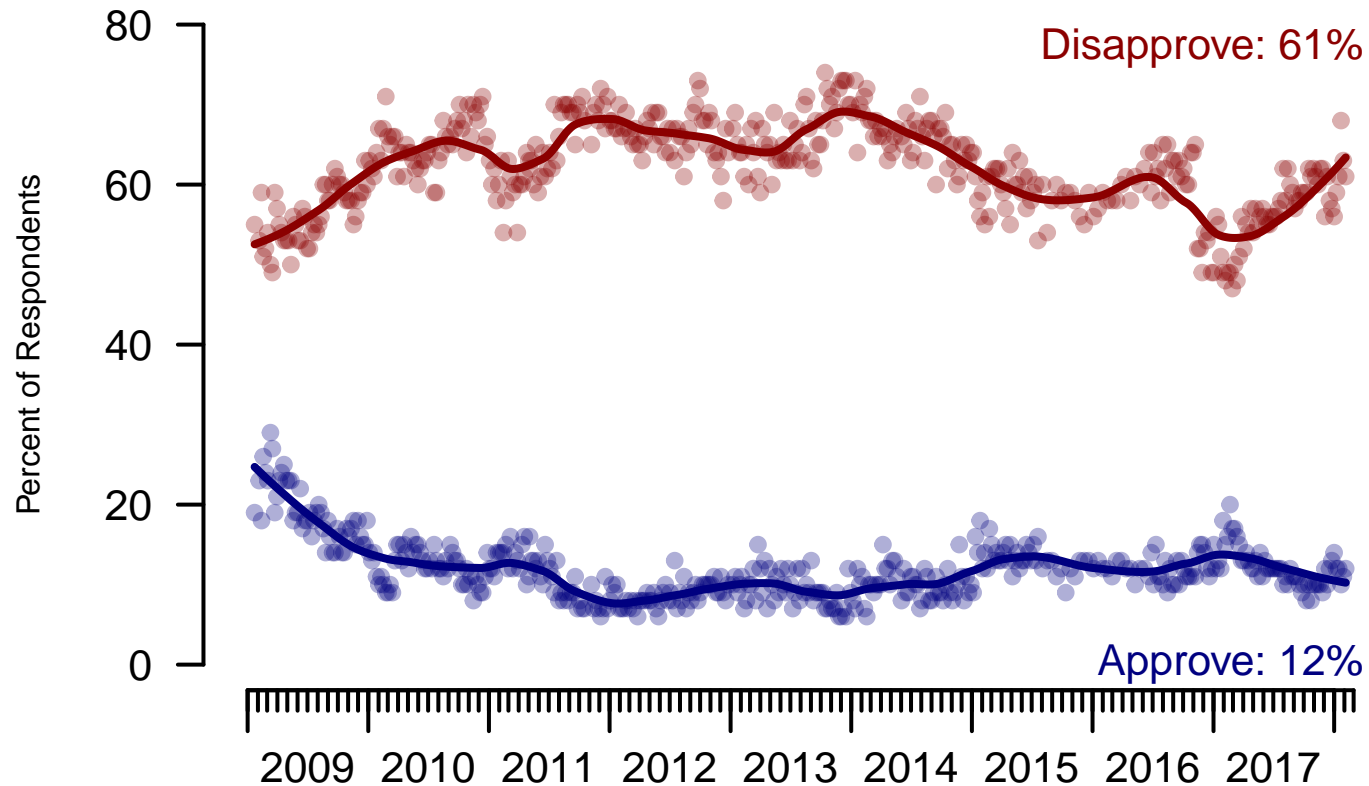


Figure 3: Congress Approval – All Adults

Congress Approval

"Do you approve of the way the
U.S. Congress is handling its job?"

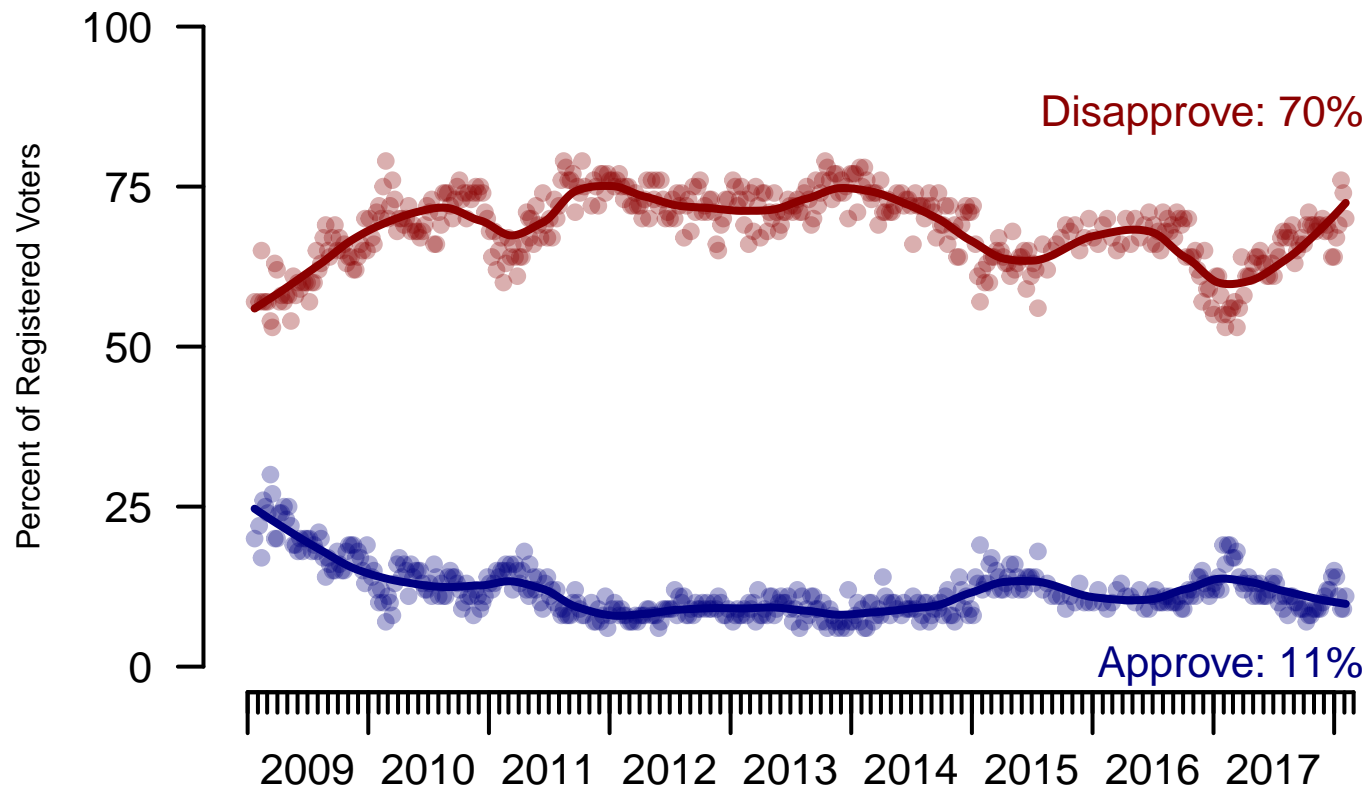


Figure 4: Congress Approval – Registered Voters

4. Approval of U.S. Congress – This Week – All Adults

Overall, do you approve or disapprove of the way that the United States Congress is handling its job?

	Age (4 category)					Race			Census Region			
	Total	Under 30	30-44	45-64	65+	White	Black	Hispanic	North-east	Mid-west	South	West
Strongly approve	3%	4%	4%	2%	1%	3%	3%	2%	5%	1%	2%	2%
Somewhat approve	9%	7%	7%	9%	11%	10%	2%	7%	9%	11%	7%	8%
Neither approve nor disapprove	12%	13%	17%	10%	11%	12%	13%	15%	13%	14%	13%	9%
Somewhat disapprove	22%	19%	20%	23%	27%	24%	20%	13%	22%	20%	23%	23%
Strongly disapprove	39%	31%	32%	47%	45%	39%	45%	35%	33%	41%	39%	45%
Not sure	15%	27%	21%	9%	5%	12%	16%	29%	19%	12%	15%	13%
Totals (Unweighted N)	100% (1,488)	100% (164)	100% (381)	100% (633)	100% (310)	100% (1,223)	100% (149)	100% (116)	100% (298)	100% (341)	100% (556)	100% (293)

	Party ID			Ideology			Gender		Family Income (3 category)			Prefer not to say	
	Total	Dem	Ind	Rep	Lib	Mod	Con	Male	Female	Under 50	50-100		100+
Strongly approve	3%	2%	2%	5%	3%	1%	4%	3%	2%	3%	2%	4%	3%
Somewhat approve	9%	5%	6%	17%	2%	6%	18%	11%	6%	6%	12%	12%	6%
Neither approve nor disapprove	12%	9%	14%	15%	7%	14%	14%	10%	14%	15%	12%	7%	9%
Somewhat disapprove	22%	17%	21%	31%	17%	19%	31%	22%	22%	21%	26%	22%	21%
Strongly disapprove	39%	56%	36%	21%	63%	38%	22%	43%	36%	37%	38%	52%	39%
Not sure	15%	11%	20%	10%	7%	23%	10%	10%	19%	18%	9%	3%	23%
Totals (Unweighted N)	100% (1,488)	100% (528)	100% (577)	100% (383)	100% (430)	100% (568)	100% (490)	100% (644)	100% (844)	100% (622)	100% (423)	100% (220)	100% (223)

5. Direction of country – Historical

Would you say things in this country today are...

	All Adults		
	Right Direction	Wrong Track	Not Sure
February 2-6, 2018	35%	49%	16%
January 26-30, 2018	34%	51%	15%
January 19-23, 2018	33%	55%	12%
January 13-15, 2018	37%	51%	12%
January 6-8, 2018	33%	52%	15%
December 30, 2017 - January 1, 2018	33%	52%	14%
December 23-25, 2017	34%	52%	14%
December 16-18, 2017	33%	52%	15%
December 9-11, 2017	31%	53%	16%
December 2-4, 2017	29%	57%	14%
One Year Ago	30%	53%	17%

	Registered Voters		
	Right Direction	Wrong Track	Not Sure
February 2-6, 2018	39%	52%	9%
January 26-30, 2018	39%	51%	10%
January 19-23, 2018	37%	55%	8%
January 13-15, 2018	39%	53%	8%
January 6-8, 2018	38%	52%	11%
December 30, 2017 - January 1, 2018	37%	53%	9%
December 23-25, 2017	37%	52%	10%
December 16-18, 2017	36%	55%	9%
December 9-11, 2017	35%	55%	10%
December 2-4, 2017	33%	57%	10%
One Year Ago	31%	55%	14%

Direction of Country

"Would you say things in this country today are generally headed in the right direction or off on the wrong track?"

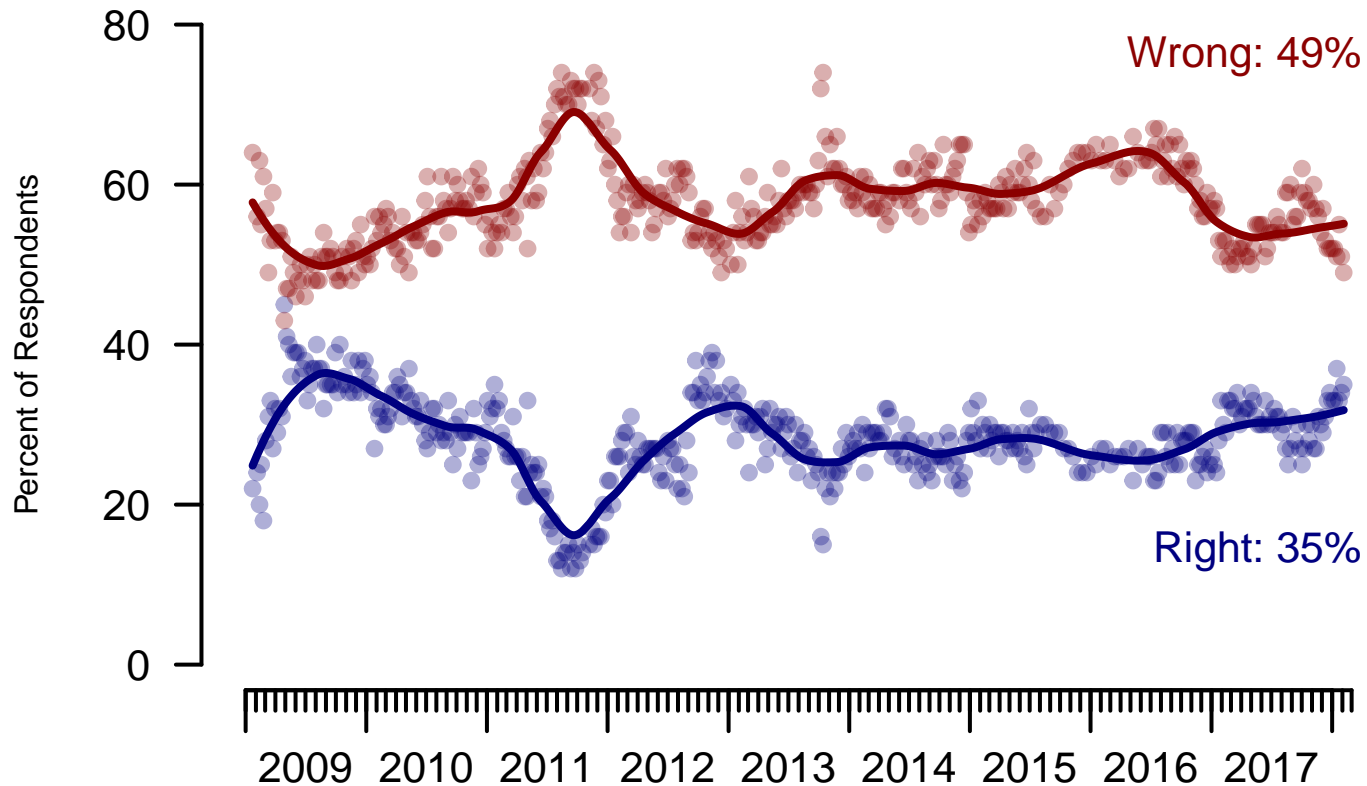


Figure 5: Direction of Country – All Adults

Direction of Country

"Would you say things in this country today are generally headed in the right direction or off on the wrong track?"

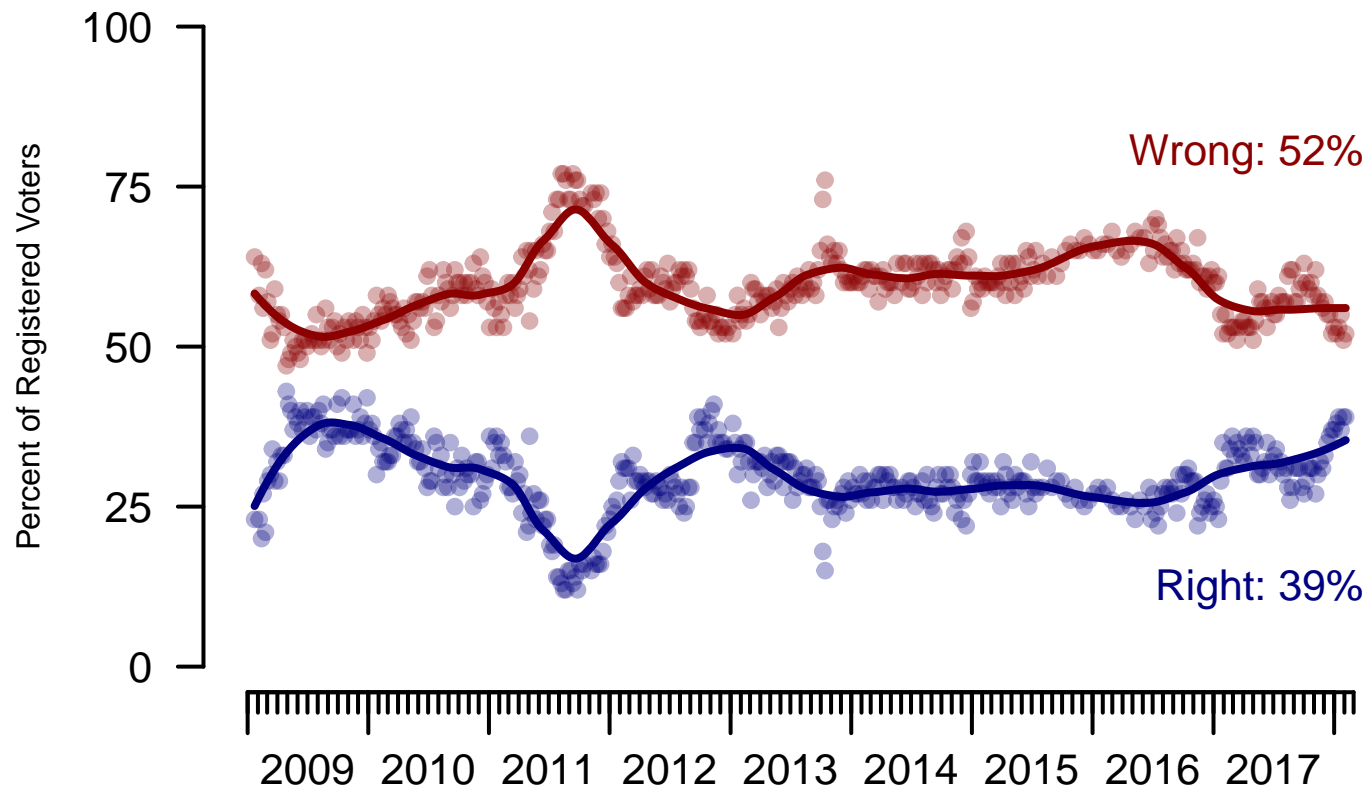


Figure 6: Direction of Country – Registered Voters

6. Direction of Country – This Week – All Adults

Would you say things in this country today are...

	Age (4 category)					Race			Census Region			
	Total	Under 30	30-44	45-64	65+	White	Black	Hispanic	North-east	Mid-west	South	West
Generally headed in the right direction	35%	18%	35%	36%	52%	41%	10%	26%	31%	37%	37%	33%
Off on the wrong track	49%	57%	44%	54%	40%	47%	68%	47%	51%	50%	47%	54%
Not sure	16%	25%	21%	11%	8%	13%	22%	28%	18%	14%	16%	14%
Totals (Unweighted N)	100% (1,500)	100% (168)	100% (386)	100% (636)	100% (310)	100% (1,229)	100% (152)	100% (119)	100% (302)	100% (341)	100% (564)	100% (293)

	Party ID			Ideology			Gender		Family Income (3 category)				
	Total	Dem	Ind	Rep	Lib	Mod	Con	Male	Female	Under 50	50-100	100+	Prefer not to say
Generally headed in the right direction	35%	12%	33%	69%	11%	24%	69%	40%	30%	29%	40%	42%	39%
Off on the wrong track	49%	77%	43%	22%	82%	52%	19%	44%	54%	50%	51%	52%	45%
Not sure	16%	11%	23%	9%	7%	24%	12%	15%	16%	22%	9%	6%	16%
Totals (Unweighted N)	100% (1,500)	100% (531)	100% (585)	100% (384)	100% (432)	100% (575)	100% (493)	100% (646)	100% (854)	100% (627)	100% (428)	100% (220)	100% (225)

The Economist/YouGov Poll
February 4 - 7, 2018



Sponsorship	<i>The Economist</i>
Fieldwork	YouGov
Interviewing Dates	February 4 - 7, 2018
Target population	U.S. citizens, aged 18 and over.
Sampling method	Respondents were selected from YouGov's opt-in Internet panel using sample matching. A random sample (stratified by age, gender, race, education, and region) was selected from the 2014 American Community Study. Voter registration was imputed from the November 2014 Current Population Survey Registration and Voting Supplement.
Weighting	The sample was weighted based on age, gender, race, education, and 2016 Presidential vote. The weights range from 0.27 to 6.41, with a mean of one and a standard deviation of 0.8.
Number of respondents	1500
Margin of error	± 3.3% (adjusted for weighting)
Margin of error (Registered Voters)	± 3.3% (adjusted for weighting)
Survey mode	Web-based interviews
Full results	Available online at http://today.yougov.com/news/categories/economist/ .