

Interviewing: November 30-December 2, 2013
Sample: 1000 Adults nationwide online



806 D Street, SE
Washington, DC 20003

Contact:
Thomas Riehle
Ph: (202) 544-2550

The Economist/YouGov Poll

Weekly Tracking

For immediate release

1. Approval of Obama as President – Historical

Do you approve or disapprove of the way Barack Obama is handling his job as President?

	All Adults						
	Total Approve	Total Disapprove	Strongly Approve	Somewhat Approve	Somewhat Disapprove	Strongly Disapprove	Not Sure
November 30-December 2, 2013	39%	57%	15%	24%	14%	43%	3%
November 23-25, 2013	37%	58%	15%	22%	12%	46%	4%
November 16-18, 2013	41%	50%	13%	28%	12%	38%	8%
November 9-11, 2013	40%	53%	14%	26%	13%	40%	6%
November 2-4, 2013	38%	53%	15%	23%	11%	42%	8%
October 26-28, 2013	40%	54%	13%	27%	15%	39%	5%
October 19-21, 2013	42%	53%	19%	23%	13%	40%	5%
October 12-14, 2013	41%	55%	17%	24%	13%	42%	4%
October 5-7, 2013	41%	51%	18%	23%	15%	36%	8%
September 28-30, 2013	43%	49%	15%	28%	13%	36%	8%
One Year Ago	49%	47%	24%	25%	12%	35%	4%

Obama Approval

"Do you approve or disapprove of the way Barack Obama is handling his job as President?"

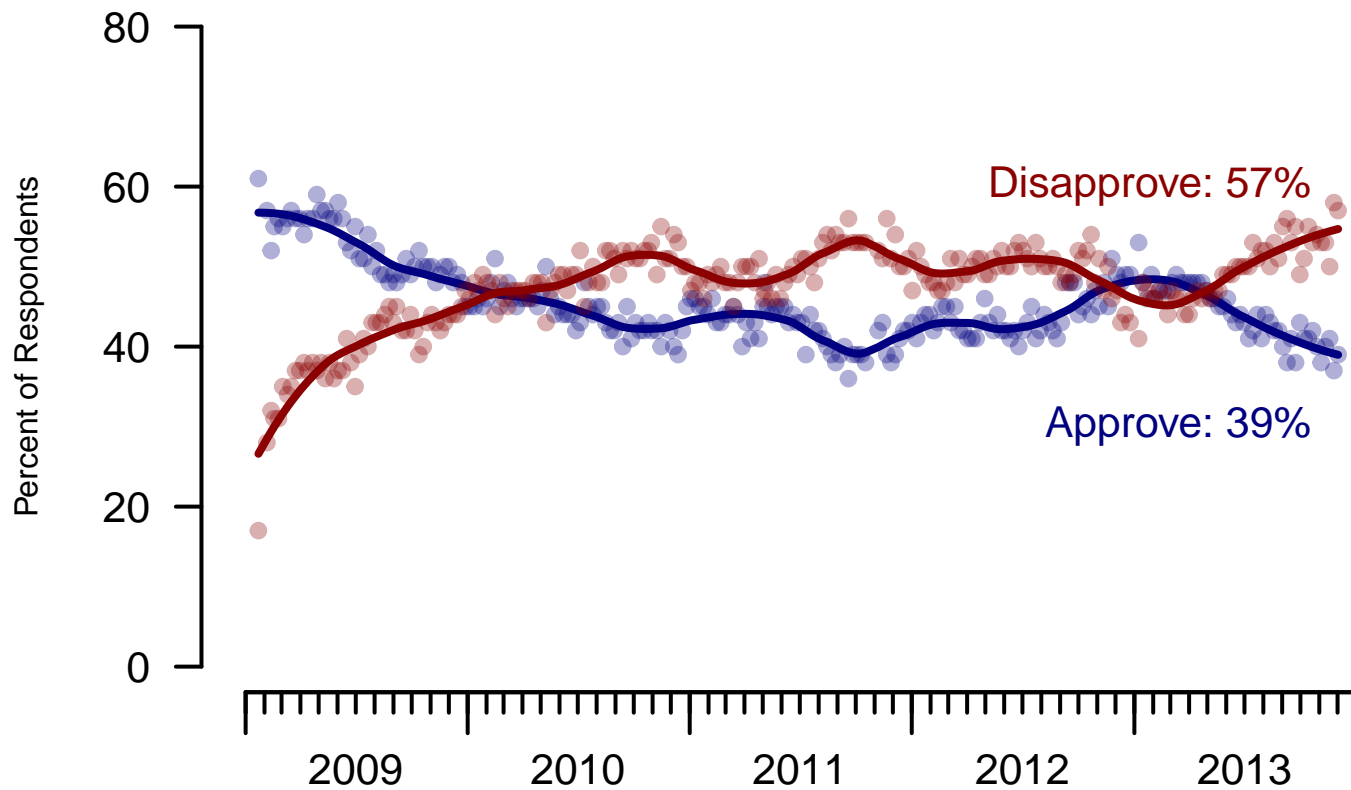


Figure 1: Obama Approval – All Adults

2. Approval of Obama as President – This Week – All Adults

Do you approve or disapprove of the way Barack Obama is handling his job as President?

	Total	Age				Race			Gender		Education		
		18-29	30-44	45-64	65+	White	Black	Hispanic	Male	Female	HS or less	Some college	College graduate
Strongly approve	15%	10%	13%	19%	18%	11%	42%	9%	13%	17%	15%	15%	14%
Somewhat approve	24%	28%	25%	24%	18%	21%	37%	30%	23%	26%	19%	28%	30%
Somewhat disapprove	14%	16%	17%	13%	9%	16%	8%	14%	12%	16%	12%	17%	15%
Strongly disapprove	43%	38%	42%	43%	54%	50%	7%	41%	49%	37%	51%	36%	40%
Not sure	3%	7%	3%	2%	1%	2%	6%	7%	2%	4%	3%	5%	2%
Totals (Unweighted N)	100% (999)	100% (195)	100% (338)	100% (330)	100% (136)	100% (757)	100% (134)	100% (108)	100% (468)	100% (531)	100% (317)	100% (356)	100% (326)

	Total	Party ID			Ideology			Region				Family Income		
		Dem	Rep	Ind	Lib	Mod	Con	North-east	Mid-west	South	West	Under 40	40-100	100+
Strongly approve	15%	34%	1%	7%	35%	12%	5%	18%	17%	14%	12%	19%	11%	16%
Somewhat approve	24%	42%	3%	23%	44%	33%	4%	29%	23%	22%	27%	19%	29%	27%
Somewhat disapprove	14%	12%	13%	17%	10%	20%	12%	16%	14%	15%	12%	15%	16%	16%
Strongly disapprove	43%	10%	83%	50%	7%	31%	79%	36%	42%	46%	44%	43%	41%	41%
Not sure	3%	3%	1%	4%	4%	4%	1%	2%	4%	3%	5%	5%	2%	–
Totals (Unweighted N)	100% (999)	100% (382)	100% (228)	100% (322)	100% (263)	100% (354)	100% (332)	100% (174)	100% (197)	100% (391)	100% (237)	100% (351)	100% (378)	100% (94)

3. Approval of U.S. Congress – Historical

Overall, do you approve or disapprove of the way that the United States Congress is handling its job?

	All Adults							
	Total Approve	Total Disapprove	Strongly Approve	Somewhat Approve	Neutral	Somewhat Disapprove	Strongly Disapprove	Not Sure
November 30-December 2, 2013	6%	73%	1%	5%	14%	21%	52%	7%
November 23-25, 2013	6%	72%	1%	5%	15%	22%	50%	7%
November 16-18, 2013	9%	69%	2%	7%	14%	21%	48%	9%
November 9-11, 2013	7%	67%	2%	5%	18%	18%	49%	8%
November 2-4, 2013	7%	71%	1%	6%	12%	20%	51%	10%
October 26-28, 2013	8%	70%	2%	6%	13%	20%	50%	9%
October 19-21, 2013	7%	72%	1%	6%	12%	24%	48%	8%
October 12-14, 2013	7%	74%	1%	6%	14%	20%	54%	5%
October 5-7, 2013	9%	68%	2%	7%	12%	19%	49%	10%
September 28-30, 2013	9%	65%	2%	7%	16%	20%	45%	11%
One Year Ago	11%	61%	2%	9%	17%	28%	33%	10%

Congress Approval

"Do you approve of the way the U.S. Congress is handling its job?"

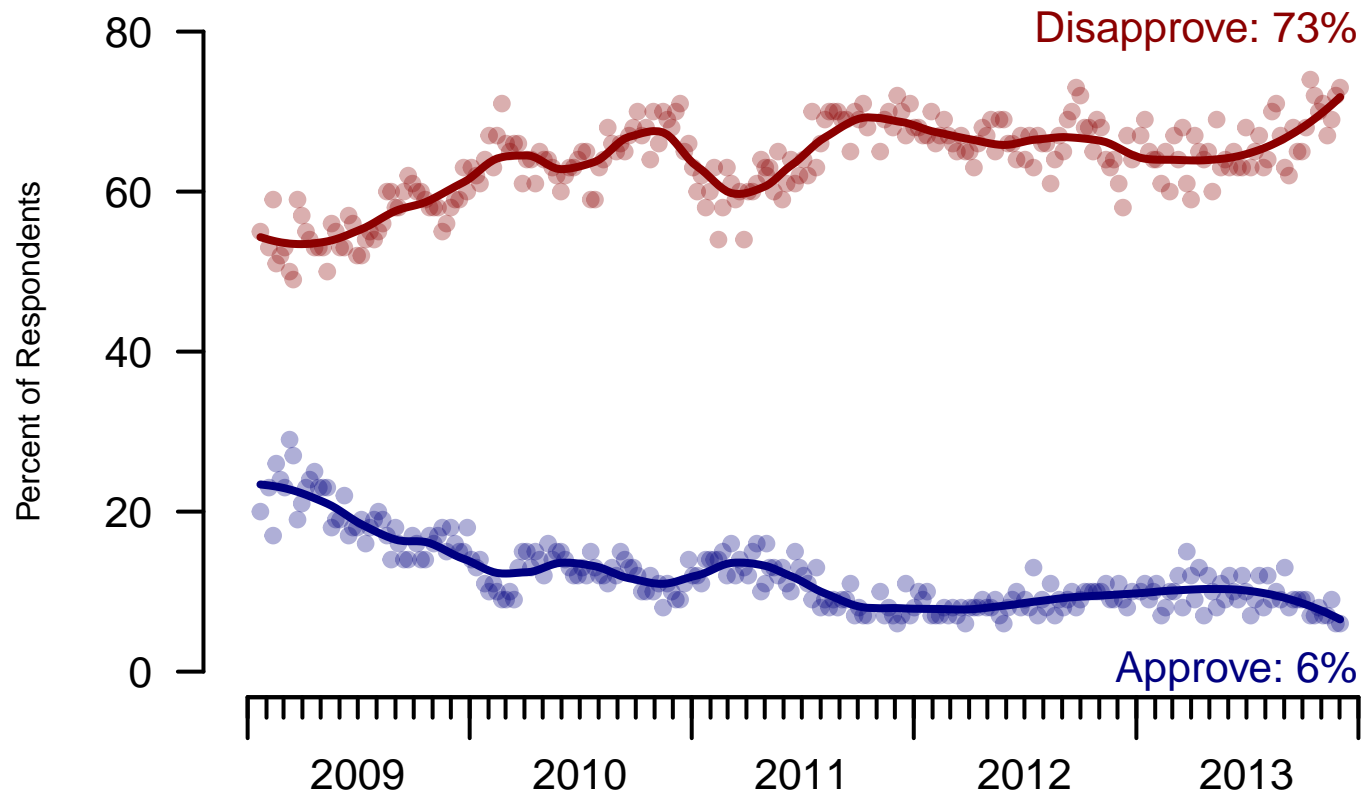


Figure 2: Congress Approval – All Adults

4. Approval of U.S. Congress – This Week – All Adults

Overall, do you approve or disapprove of the way that the United States Congress is handling its job?

	Age					Race			Gender		Education		
	Total	18-29	30-44	45-64	65+	White	Black	Hispanic	Male	Female	HS or less	Some college	College graduate
Strongly approve	1%	0%	1%	1%	—	0%	3%	0%	1%	0%	1%	1%	0%
Somewhat approve	5%	3%	4%	8%	5%	4%	9%	5%	5%	5%	5%	4%	6%
Neither approve nor disapprove	14%	18%	15%	12%	9%	13%	15%	15%	10%	17%	16%	14%	9%
Somewhat disapprove	21%	22%	19%	24%	19%	21%	19%	25%	24%	19%	20%	23%	22%
Strongly disapprove	52%	47%	52%	51%	65%	55%	42%	44%	58%	46%	49%	51%	60%
Not sure	7%	10%	10%	4%	1%	5%	12%	11%	1%	12%	8%	8%	3%
Totals (Unweighted N)	100% (1,000)	100% (195)	100% (339)	100% (330)	100% (136)	100% (758)	100% (134)	100% (108)	100% (468)	100% (532)	100% (318)	100% (356)	100% (326)

	Party ID			Ideology			Region				Family Income			
	Total	Dem	Rep	Ind	Lib	Mod	Con	North-east	Mid-west	South	West	Under 40	40-100	100+
Strongly approve	1%	1%	—	1%	—	1%	1%	—	1%	1%	1%	1%	1%	—
Somewhat approve	5%	5%	9%	2%	2%	4%	8%	5%	2%	7%	5%	4%	5%	7%
Neither approve nor disapprove	14%	18%	9%	11%	11%	17%	13%	17%	14%	14%	11%	19%	13%	6%
Somewhat disapprove	21%	19%	31%	18%	15%	22%	26%	21%	27%	18%	21%	22%	20%	32%
Strongly disapprove	52%	50%	46%	61%	63%	51%	48%	53%	49%	52%	55%	48%	51%	51%
Not sure	7%	6%	4%	6%	10%	5%	5%	4%	7%	8%	8%	6%	9%	3%
Totals (Unweighted N)	100% (1,000)	100% (382)	100% (228)	100% (322)	100% (263)	100% (354)	100% (333)	100% (175)	100% (197)	100% (391)	100% (237)	100% (351)	100% (378)	100% (94)

5. Direction of country – Historical

Would you say things in this country today are...

	All Adults		
	Right Direction	Wrong Track	Not Sure
November 30-December 2, 2013	24%	62%	13%
November 23-25, 2013	24%	66%	10%
November 16-18, 2013	22%	62%	16%
November 9-11, 2013	24%	62%	15%
November 2-4, 2013	21%	65%	14%
October 26-28, 2013	24%	61%	14%
October 19-21, 2013	22%	66%	13%
October 12-14, 2013	15%	74%	12%
October 5-7, 2013	16%	72%	12%
September 28-30, 2013	24%	63%	13%
One Year Ago	33%	51%	16%

Direction of Country

"Would you say things in this country today are generally headed in the right direction or off on the wrong track?"

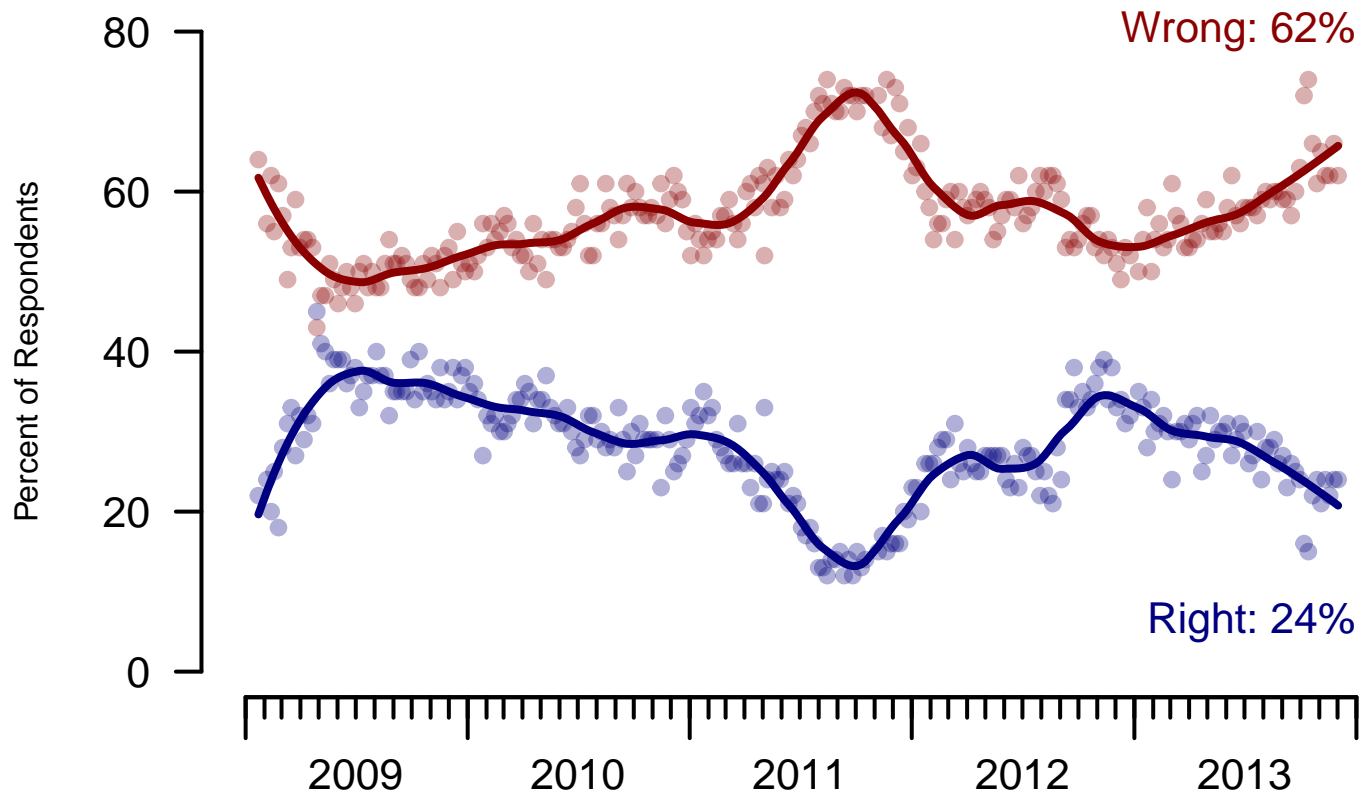


Figure 3: Direction of Country – All Adults

6. Direction of Country – This Week – All Adults

Would you say things in this country today are...

	Total	Age				Race			Gender		Education		
		18-29	30-44	45-64	65+	White	Black	Hispanic	Male	Female	HS or less	Some college	College graduate
Generally headed in the right direction	24%	25%	22%	25%	26%	20%	49%	24%	24%	24%	22%	24%	29%
Off on the wrong track	62%	62%	63%	60%	65%	69%	31%	58%	67%	58%	66%	61%	57%
Not sure	13%	13%	15%	15%	9%	11%	20%	18%	9%	18%	12%	15%	14%
Totals (Unweighted N)	100% (1,000)	100% (195)	100% (339)	100% (330)	100% (136)	100% (758)	100% (134)	100% (108)	100% (468)	100% (532)	100% (318)	100% (356)	100% (326)

	Total	Party ID			Ideology			Region				Family Income		
		Dem	Rep	Ind	Lib	Mod	Con	North-east	Mid-west	South	West	Under 40	40-100	100+
Generally headed in the right direction	24%	48%	1%	18%	52%	27%	4%	22%	26%	21%	29%	21%	28%	33%
Off on the wrong track	62%	36%	93%	69%	28%	58%	89%	62%	61%	66%	57%	64%	59%	55%
Not sure	13%	16%	6%	13%	20%	15%	7%	16%	13%	12%	14%	15%	13%	12%
Totals (Unweighted N)	100% (1,000)	100% (382)	100% (228)	100% (322)	100% (263)	100% (354)	100% (333)	100% (175)	100% (197)	100% (391)	100% (237)	100% (351)	100% (378)	100% (94)

The Economist/YouGov Poll
November 30-December 2, 2013



Sponsorship	<i>The Economist</i>
Fieldwork	YouGov
Interviewing Dates	November 30-December 2, 2013
Target population	U.S. citizens, aged 18 and over.
Sampling method	Respondents were selected from YouGov's opt-in Internet panel using sample matching. A random sample (stratified by age, gender, race, education, and region) was selected from the 2010 American Community Study. Voter registration was imputed from the November 2010 Current Population Survey Registration and Voting Supplement. Religion, political interest, minor party identification, and non-placement on an ideology scale, were imputed from the 2008 Pew Religion in American Life Survey.
Weighting	The sample was weighted using propensity scores based on age, gender, race, education, news interest, voter registration, and non-placement on an ideology scale. The weights range from 0.27 to 5.01, with a mean of one and a standard deviation of 0.8.
Number of respondents	1,000
Margin of error	± 3.9% (adjusted for weighting)
Survey mode	Web-based interviews
Full results	Available online at http://today.yougov.com/news/categories/economist/ .