

Interviewing: January 18-20, 2014
Sample: 1000 Adults nationwide online
700 registered voters nationwide online



806 D Street, SE
Washington, DC 20003

Contact:
Thomas Riehle
Ph: (202) 544-2550

The Economist/YouGov Poll

Weekly Tracking

For immediate release

1. Approval of Obama as President – Historical

Do you approve or disapprove of the way Barack Obama is handling his job as President?

	All Adults						
	Total Approve	Total Disapprove	Strongly Approve	Somewhat Approve	Somewhat Disapprove	Strongly Disapprove	Not Sure
January 18-20, 2014	45%	51%	17%	28%	14%	37%	4%
January 11-13, 2014	42%	55%	17%	25%	17%	38%	3%
January 4-6, 2014	43%	54%	15%	28%	14%	40%	3%
December 28-30, 2013	40%	56%	14%	26%	15%	41%	4%
December 21-23, 2013	42%	55%	16%	26%	11%	44%	2%
December 14-16, 2013	40%	58%	14%	26%	13%	45%	3%
December 7-9, 2013	41%	56%	16%	25%	11%	45%	3%
November 30-December 2, 2013	39%	57%	15%	24%	14%	43%	3%
November 23-25, 2013	37%	58%	15%	22%	12%	46%	4%
November 16-18, 2013	41%	50%	13%	28%	12%	38%	8%
One Year Ago	46%	47%	16%	30%	12%	35%	7%

	Registered Voters						
	Total Approve	Total Disapprove	Strongly Approve	Somewhat Approve	Somewhat Disapprove	Strongly Disapprove	Not Sure
January 18-20, 2014	44%	54%	19%	25%	12%	42%	2%
January 11-13, 2014	42%	57%	18%	24%	14%	43%	1%
January 4-6, 2014	42%	56%	16%	26%	12%	44%	2%
December 28-30, 2013	40%	57%	14%	26%	10%	47%	2%
December 21-23, 2013	42%	55%	16%	26%	11%	44%	2%
December 14-16, 2013	38%	58%	14%	24%	12%	46%	3%
December 7-9, 2013	43%	54%	16%	27%	10%	44%	3%
November 30-December 2, 2013	42%	56%	16%	26%	13%	43%	2%
November 23-25, 2013	39%	58%	16%	23%	11%	47%	4%
November 16-18, 2013	42%	56%	16%	26%	12%	44%	2%
One Year Ago	45%	52%	18%	27%	11%	41%	4%

Obama Approval

"Do you approve or disapprove of the way Barack Obama is handling his job as President?"

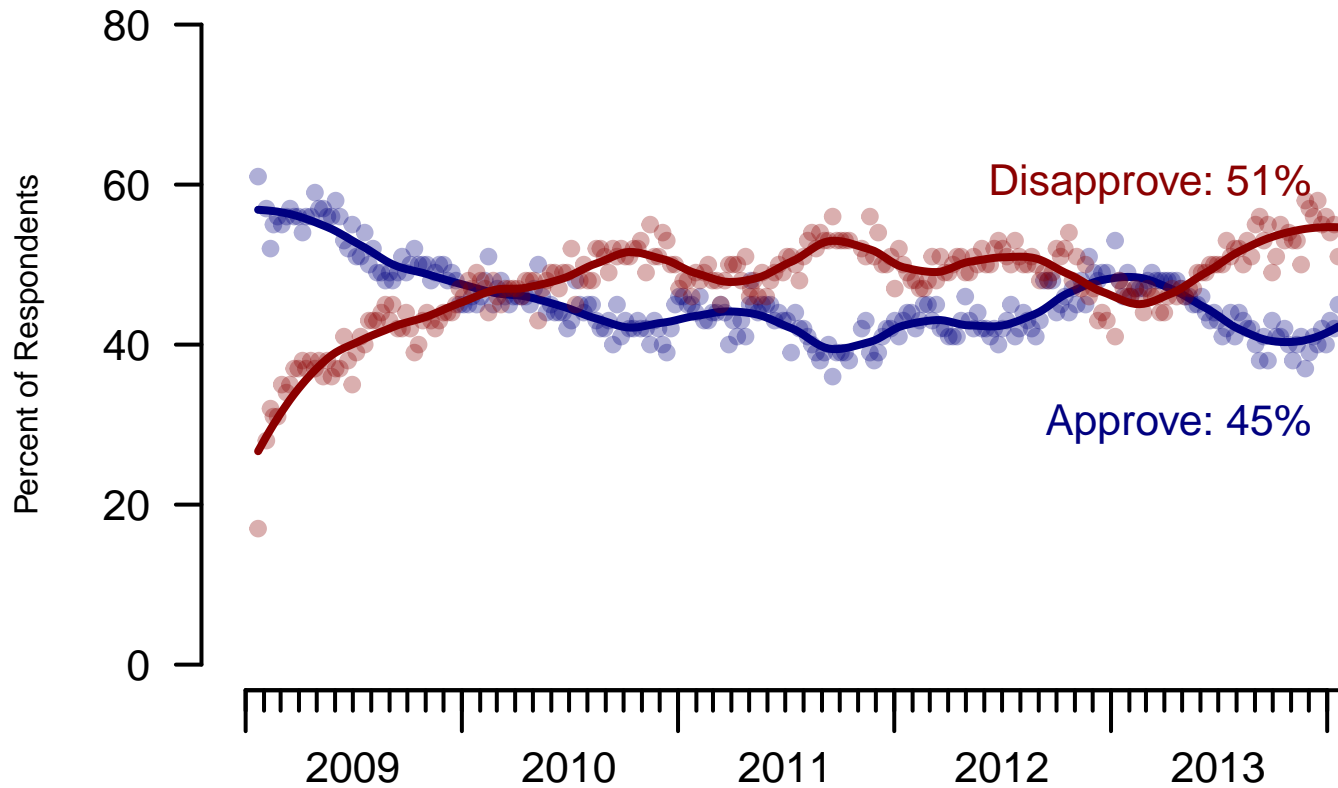


Figure 1: Obama Approval – All Adults

Obama Approval

"Do you approve or disapprove of the way Barack Obama is handling his job as President?"

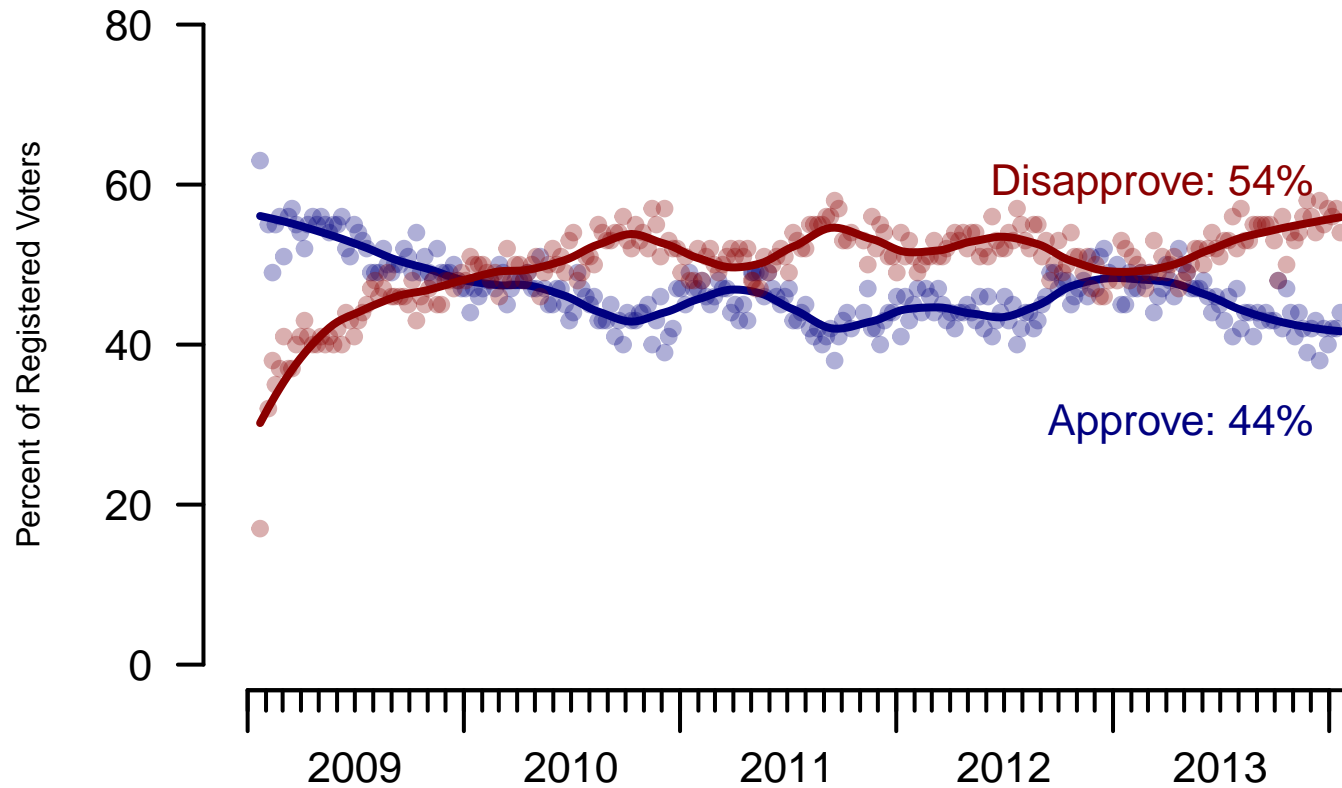


Figure 2: Obama Approval – Registered Voters

2. Approval of Obama as President – This Week – All Adults

Do you approve or disapprove of the way Barack Obama is handling his job as President?

	Total	Age				Race			Gender		Education		
		18-29	30-44	45-64	65+	White	Black	Hispanic	Male	Female	HS or less	Some college	College graduate
Strongly approve	17%	18%	16%	17%	20%	10%	55%	19%	13%	22%	16%	21%	16%
Somewhat approve	28%	31%	34%	24%	20%	27%	26%	36%	29%	27%	23%	30%	35%
Somewhat disapprove	14%	23%	13%	12%	5%	14%	11%	16%	15%	13%	16%	12%	12%
Strongly disapprove	37%	19%	32%	46%	55%	44%	3%	26%	41%	33%	41%	34%	34%
Not sure	4%	9%	5%	1%	–	4%	5%	2%	2%	5%	4%	4%	3%
Totals (Unweighted N)	100% (998)	100% (219)	100% (311)	100% (346)	100% (122)	100% (735)	100% (147)	100% (116)	100% (478)	100% (520)	100% (358)	100% (382)	100% (258)

	Total	Party ID			Ideology			Region				Family Income		
		Dem	Rep	Ind	Lib	Mod	Con	North-east	Mid-west	South	West	Under 40	40-100	100+
Strongly approve	17%	35%	3%	13%	29%	17%	12%	14%	21%	17%	17%	20%	15%	13%
Somewhat approve	28%	45%	6%	26%	47%	37%	11%	38%	27%	25%	27%	30%	28%	34%
Somewhat disapprove	14%	10%	14%	20%	12%	19%	10%	13%	11%	15%	16%	15%	13%	13%
Strongly disapprove	37%	7%	76%	39%	6%	22%	66%	30%	37%	41%	36%	31%	41%	33%
Not sure	4%	3%	1%	3%	6%	5%	1%	6%	3%	3%	4%	4%	3%	6%
Totals (Unweighted N)	100% (998)	100% (377)	100% (240)	100% (288)	100% (234)	100% (349)	100% (334)	100% (138)	100% (196)	100% (373)	100% (291)	100% (414)	100% (330)	100% (86)

3. Approval of U.S. Congress – Historical

Overall, do you approve or disapprove of the way that the United States Congress is handling its job?

All Adults

	Total Approve	Total Disapprove	Strongly Approve	Somewhat Approve	Neutral	Somewhat Disapprove	Strongly Disapprove	Not Sure
January 18-20, 2014	12%	64%	3%	9%	17%	24%	40%	6%
January 11-13, 2014	7%	73%	2%	5%	13%	24%	49%	7%
January 4-6, 2014	8%	69%	1%	7%	15%	22%	47%	7%
December 28-30, 2013	9%	70%	2%	7%	16%	26%	44%	6%
December 21-23, 2013	12%	70%	3%	9%	14%	26%	44%	4%
December 14-16, 2013	6%	73%	1%	5%	16%	24%	49%	5%
December 7-9, 2013	7%	73%	1%	6%	15%	21%	52%	6%
November 30-December 2, 2013	6%	73%	1%	5%	14%	21%	52%	7%
November 23-25, 2013	6%	72%	1%	5%	15%	22%	50%	7%
November 16-18, 2013	9%	69%	2%	7%	14%	21%	48%	9%
One Year Ago	9%	65%	3%	6%	18%	22%	43%	8%

Registered Voters

	Total Approve	Total Disapprove	Strongly Approve	Somewhat Approve	Neutral	Somewhat Disapprove	Strongly Disapprove	Not Sure
January 18-20, 2014	10%	71%	2%	8%	14%	26%	45%	5%
January 11-13, 2014	8%	77%	2%	6%	11%	24%	53%	3%
January 4-6, 2014	7%	77%	1%	6%	13%	24%	53%	3%
December 28-30, 2013	7%	77%	2%	5%	12%	25%	52%	4%
December 21-23, 2013	12%	70%	3%	9%	14%	26%	44%	4%
December 14-16, 2013	6%	75%	1%	5%	14%	24%	51%	4%
December 7-9, 2013	7%	74%	2%	5%	14%	20%	54%	5%
November 30-December 2, 2013	6%	76%	1%	5%	12%	22%	54%	5%
November 23-25, 2013	7%	74%	1%	6%	13%	22%	52%	6%
November 16-18, 2013	6%	77%	1%	5%	13%	22%	55%	4%
One Year Ago	9%	72%	2%	7%	14%	22%	50%	5%

Congress Approval

"Do you approve of the way the U.S. Congress is handling its job?"

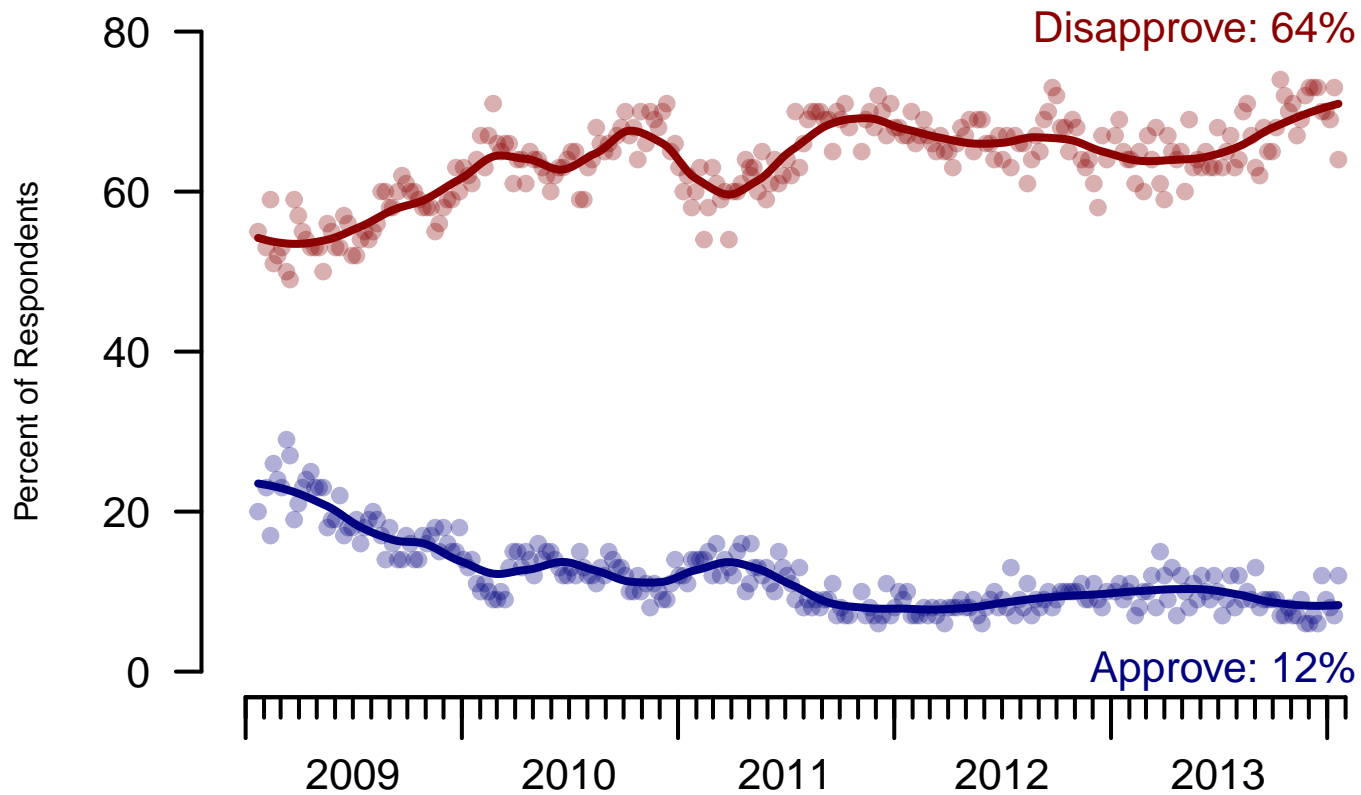


Figure 3: Congress Approval – All Adults

Congress Approval

"Do you approve of the way the
U.S. Congress is handling its job?"

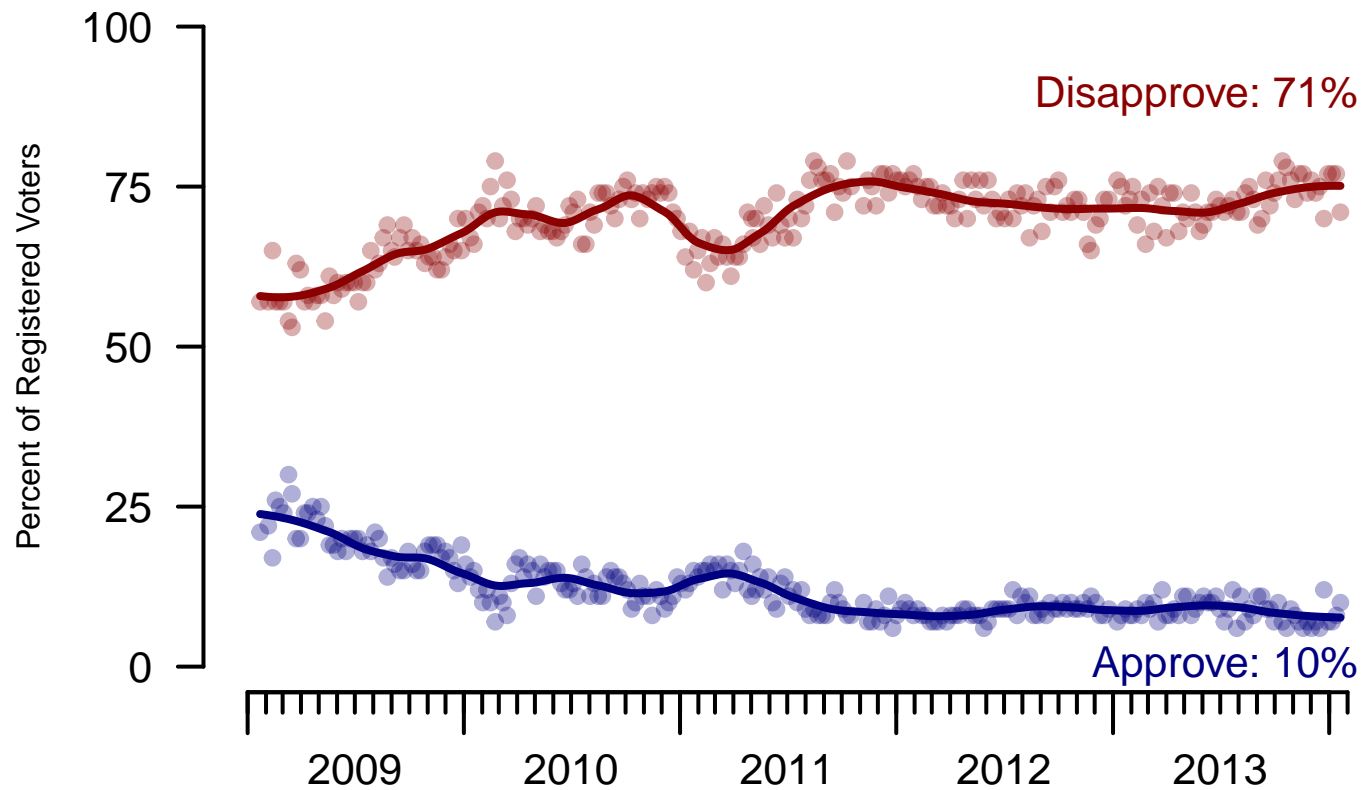


Figure 4: Congress Approval – Registered Voters

4. Approval of U.S. Congress – This Week – All Adults

Overall, do you approve or disapprove of the way that the United States Congress is handling its job?

	Total	Age				Race			Gender		Education		
		18-29	30-44	45-64	65+	White	Black	Hispanic	Male	Female	HS or less	Some college	College graduate
Strongly approve	3%	6%	4%	2%	–	1%	9%	6%	4%	2%	2%	5%	2%
Somewhat approve	9%	9%	11%	9%	4%	6%	16%	19%	8%	10%	10%	10%	5%
Neither approve nor disapprove	17%	22%	19%	13%	15%	15%	27%	20%	14%	20%	22%	15%	10%
Somewhat disapprove	24%	23%	23%	27%	25%	26%	16%	21%	23%	26%	21%	27%	27%
Strongly disapprove	40%	31%	36%	45%	55%	45%	24%	31%	49%	32%	37%	37%	52%
Not sure	6%	10%	7%	5%	1%	6%	8%	2%	3%	10%	7%	6%	4%
Totals (Unweighted N)	100% (998)	100% (219)	100% (312)	100% (345)	100% (122)	100% (735)	100% (147)	100% (116)	100% (479)	100% (519)	100% (358)	100% (382)	100% (258)

	Total	Party ID			Ideology			Region				Family Income		
		Dem	Rep	Ind	Lib	Mod	Con	North-east	Mid-west	South	West	Under 40	40-100	100+
Strongly approve	3%	4%	3%	3%	4%	1%	4%	1%	4%	5%	1%	4%	2%	–
Somewhat approve	9%	13%	10%	3%	5%	8%	12%	5%	9%	11%	8%	12%	7%	12%
Neither approve nor disapprove	17%	18%	17%	15%	12%	22%	16%	18%	17%	17%	15%	20%	12%	20%
Somewhat disapprove	24%	17%	35%	24%	19%	19%	32%	28%	21%	26%	23%	20%	29%	25%
Strongly disapprove	40%	44%	29%	50%	54%	44%	31%	40%	42%	37%	44%	34%	46%	42%
Not sure	6%	6%	6%	5%	6%	6%	5%	7%	7%	4%	9%	9%	4%	1%
Totals (Unweighted N)	100% (998)	100% (376)	100% (240)	100% (289)	100% (235)	100% (348)	100% (334)	100% (139)	100% (196)	100% (373)	100% (290)	100% (413)	100% (330)	100% (86)

5. Direction of country – Historical

Would you say things in this country today are...

	All Adults		
	Right Direction	Wrong Track	Not Sure
January 18-20, 2014	27%	59%	14%
January 11-13, 2014	28%	58%	14%
January 4-6, 2014	27%	59%	14%
December 28-30, 2013	26%	58%	15%
December 21-23, 2013	29%	61%	11%
December 14-16, 2013	25%	60%	15%
December 7-9, 2013	27%	60%	13%
November 30-December 2, 2013	24%	62%	13%
November 23-25, 2013	24%	66%	10%
November 16-18, 2013	22%	62%	16%
One Year Ago	28%	58%	14%

	Registered Voters		
	Right Direction	Wrong Track	Not Sure
January 18-20, 2014	27%	60%	13%
January 11-13, 2014	27%	61%	12%
January 4-6, 2014	28%	60%	12%
December 28-30, 2013	26%	60%	14%
December 21-23, 2013	29%	60%	11%
December 14-16, 2013	24%	61%	15%
December 7-9, 2013	28%	60%	12%
November 30-December 2, 2013	27%	62%	12%
November 23-25, 2013	25%	65%	10%
November 16-18, 2013	26%	63%	11%
One Year Ago	30%	58%	12%

Direction of Country

"Would you say things in this country today are generally headed in the right direction or off on the wrong track?"

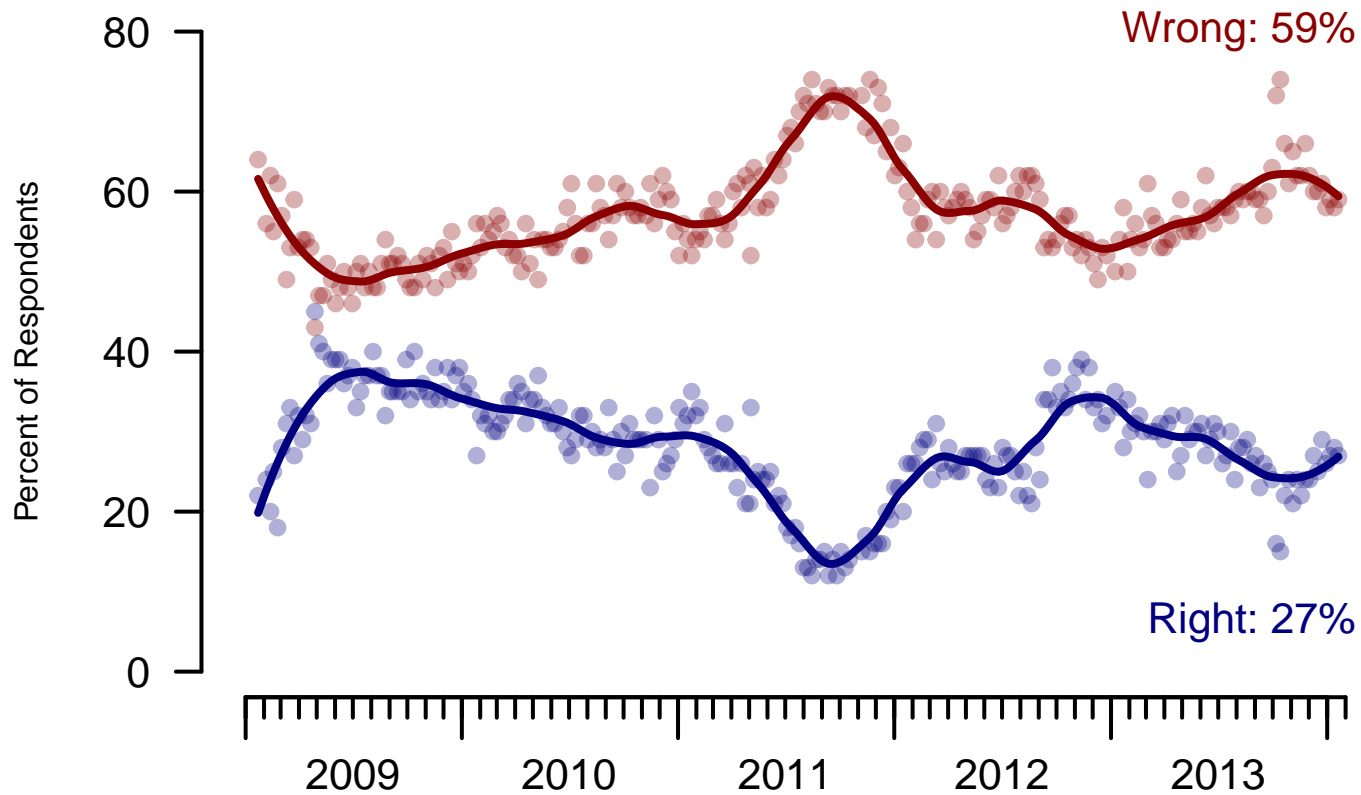


Figure 5: Direction of Country – All Adults

Direction of Country

"Would you say things in this country today are generally headed in the right direction or off on the wrong track?"

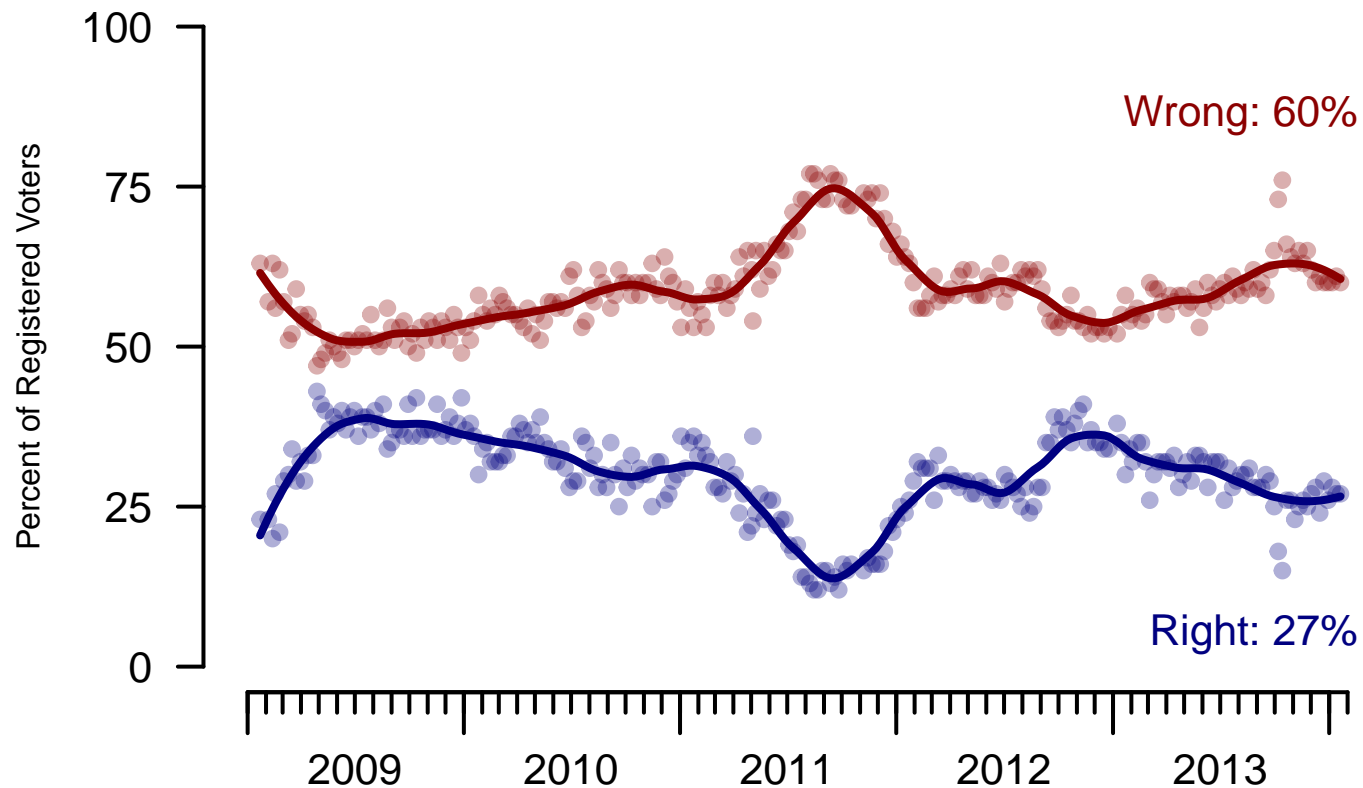


Figure 6: Direction of Country – Registered Voters

6. Direction of Country – This Week – All Adults

Would you say things in this country today are...

	Total	Age				Race			Gender		Education		
		18-29	30-44	45-64	65+	White	Black	Hispanic	Male	Female	HS or less	Some college	College graduate
Generally headed in the right direction	27%	30%	30%	23%	28%	23%	52%	30%	30%	25%	24%	30%	30%
Off on the wrong track	59%	55%	55%	63%	61%	67%	19%	51%	61%	56%	61%	59%	54%
Not sure	14%	15%	16%	14%	12%	11%	29%	20%	9%	19%	15%	11%	17%
Totals (Unweighted N)	100% (999)	100% (220)	100% (311)	100% (346)	100% (122)	100% (737)	100% (147)	100% (115)	100% (478)	100% (521)	100% (358)	100% (382)	100% (259)

	Total	Party ID			Ideology			Region				Family Income		
		Dem	Rep	Ind	Lib	Mod	Con	North-east	Mid-west	South	West	Under 40	40-100	100+
Generally headed in the right direction	27%	49%	10%	22%	45%	27%	19%	30%	29%	25%	27%	27%	29%	36%
Off on the wrong track	59%	29%	87%	66%	33%	56%	75%	59%	56%	59%	62%	55%	61%	56%
Not sure	14%	22%	3%	12%	22%	18%	6%	11%	14%	17%	11%	18%	10%	8%
Totals (Unweighted N)	100% (999)	100% (377)	100% (241)	100% (289)	100% (234)	100% (349)	100% (335)	100% (140)	100% (196)	100% (372)	100% (291)	100% (414)	100% (330)	100% (85)

The Economist/YouGov Poll
January 18-20, 2014



Sponsorship	<i>The Economist</i>
Fieldwork	YouGov
Interviewing Dates	January 18-20, 2014
Target population	U.S. citizens, aged 18 and over.
Sampling method	Respondents were selected from YouGov's opt-in Internet panel using sample matching. A random sample (stratified by age, gender, race, education, and region) was selected from the 2010 American Community Study. Voter registration was imputed from the November 2010 Current Population Survey Registration and Voting Supplement. Religion, political interest, minor party identification, and non-placement on an ideology scale, were imputed from the 2008 Pew Religion in American Life Survey.
Weighting	The sample was weighted using propensity scores based on age, gender, race, education, news interest, voter registration, and non-placement on an ideology scale. The weights range from 0.1 to 4.08, with a mean of one and a standard deviation of 0.8.
Number of respondents	1,000
Margin of error	± 3.9% (adjusted for weighting)
Margin of error (Registered Voters)	± 4.5% (adjusted for weighting)
Survey mode	Web-based interviews
Full results	Available online at http://today.yougov.com/news/categories/economist/ .