

Interviewing: December 21-23, 2013  
Sample: 1000 Adults nationwide online



806 D Street, SE  
Washington, DC 20003

Contact:  
Thomas Riehle  
Ph: (202) 544-2550

# *The Economist/YouGov* Poll

## Weekly Tracking

For immediate release

**1. Approval of Obama as President – Historical**

Do you approve or disapprove of the way Barack Obama is handling his job as President?

	All Adults						
	<b>Total Approve</b>	<b>Total Disapprove</b>	Strongly Approve	Somewhat Approve	Somewhat Disapprove	Strongly Disapprove	Not Sure
December 21-23, 2013	42%	55%	16%	26%	11%	44%	2%
December 14-16, 2013	40%	58%	14%	26%	13%	45%	3%
December 7-9, 2013	41%	56%	16%	25%	11%	45%	3%
November 30-December 2, 2013	39%	57%	15%	24%	14%	43%	3%
November 23-25, 2013	37%	58%	15%	22%	12%	46%	4%
November 16-18, 2013	41%	50%	13%	28%	12%	38%	8%
November 9-11, 2013	40%	53%	14%	26%	13%	40%	6%
November 2-4, 2013	38%	53%	15%	23%	11%	42%	8%
October 26-28, 2013	40%	54%	13%	27%	15%	39%	5%
October 19-21, 2013	42%	53%	19%	23%	13%	40%	5%
One Year Ago	49%	43%	24%	25%	9%	34%	7%

## Obama Approval

"Do you approve or disapprove of the way Barack Obama is handling his job as President?"

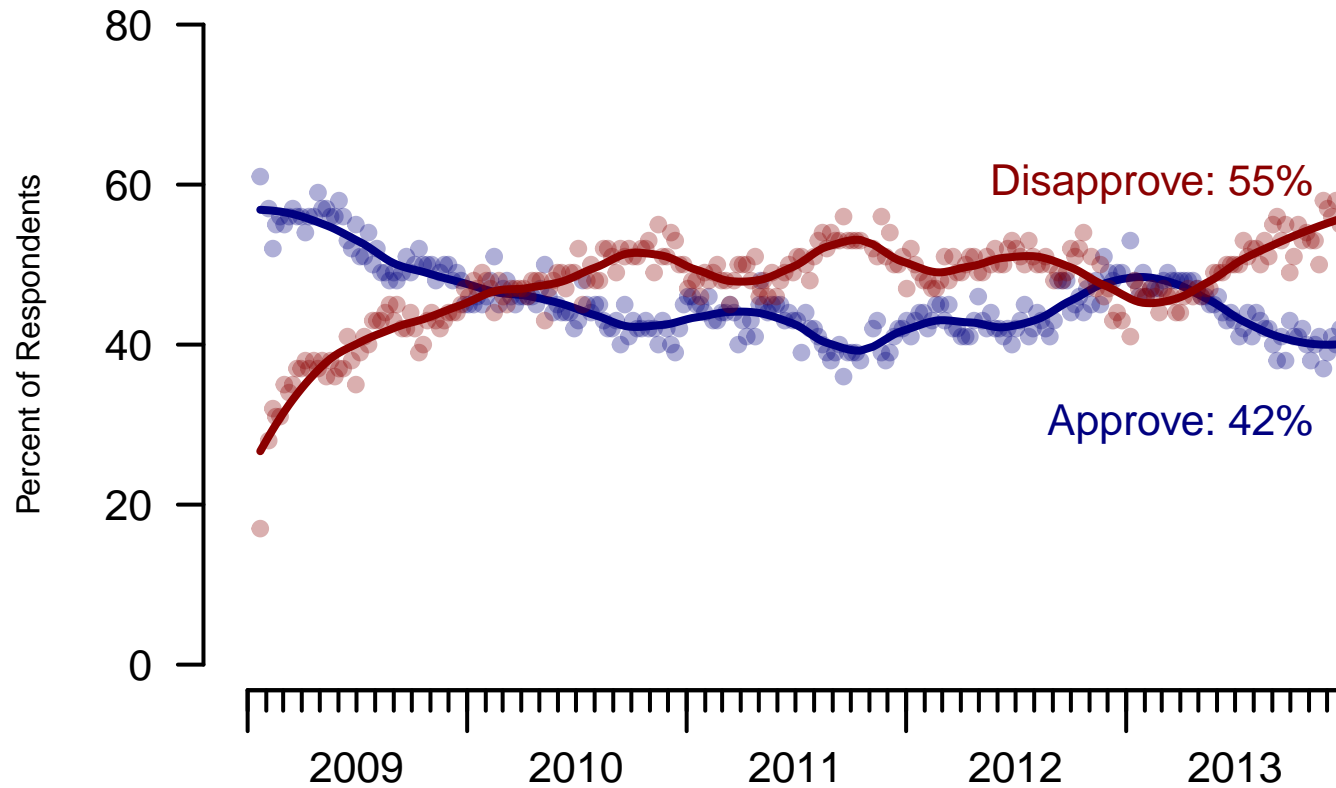


Figure 1: Obama Approval – All Adults

**2. Approval of Obama as President – This Week – All Adults**

Do you approve or disapprove of the way Barack Obama is handling his job as President?

	Age					Race			Gender		Education		
	Total	18-29	30-44	45-64	65+	White	Black	Hispanic	Male	Female	HS or less	Some college	College graduate
Strongly approve	16%	14%	20%	15%	13%	10%	47%	12%	13%	19%	16%	16%	15%
Somewhat approve	26%	35%	23%	26%	18%	24%	37%	31%	25%	28%	26%	25%	28%
Somewhat disapprove	11%	16%	12%	8%	8%	12%	6%	18%	14%	9%	15%	8%	10%
Strongly disapprove	44%	30%	42%	49%	60%	52%	6%	39%	48%	41%	41%	47%	45%
Not sure	2%	4%	2%	1%	2%	2%	4%	–	1%	3%	1%	3%	3%
Totals (Unweighted N)	100% (998)	100% (174)	100% (373)	100% (325)	100% (126)	100% (758)	100% (142)	100% (98)	100% (464)	100% (534)	100% (308)	100% (379)	100% (311)

	Party ID			Ideology			Region				Family Income			
	Total	Dem	Rep	Ind	Lib	Mod	Con	North-east	Mid-west	South	West	Under 40	40-100	100+
Strongly approve	16%	37%	0%	4%	32%	19%	4%	13%	12%	23%	11%	21%	10%	7%
Somewhat approve	26%	45%	3%	23%	52%	34%	5%	37%	28%	21%	26%	28%	28%	29%
Somewhat disapprove	11%	10%	9%	15%	4%	15%	12%	5%	11%	14%	14%	14%	12%	14%
Strongly disapprove	44%	4%	87%	55%	10%	29%	78%	42%	48%	41%	48%	34%	49%	49%
Not sure	2%	3%	1%	2%	2%	3%	1%	3%	2%	3%	1%	3%	1%	1%
Totals (Unweighted N)	100% (998)	100% (415)	100% (250)	100% (297)	100% (267)	100% (360)	100% (333)	100% (152)	100% (206)	100% (338)	100% (302)	100% (337)	100% (388)	100% (84)

**3. Approval of U.S. Congress – Historical**

Overall, do you approve or disapprove of the way that the United States Congress is handling its job?

All Adults

	<b>Total Approve</b>	<b>Total Disapprove</b>	Strongly Approve	Somewhat Approve	Neutral	Somewhat Disapprove	Strongly Disapprove	Not Sure
December 21-23, 2013	12%	70%	3%	9%	14%	26%	44%	4%
December 14-16, 2013	6%	73%	1%	5%	16%	24%	49%	5%
December 7-9, 2013	7%	73%	1%	6%	15%	21%	52%	6%
November 30-December 2, 2013	6%	73%	1%	5%	14%	21%	52%	7%
November 23-25, 2013	6%	72%	1%	5%	15%	22%	50%	7%
November 16-18, 2013	9%	69%	2%	7%	14%	21%	48%	9%
November 9-11, 2013	7%	67%	2%	5%	18%	18%	49%	8%
November 2-4, 2013	7%	71%	1%	6%	12%	20%	51%	10%
October 26-28, 2013	8%	70%	2%	6%	13%	20%	50%	9%
October 19-21, 2013	7%	72%	1%	6%	12%	24%	48%	8%
One Year Ago	10%	64%	2%	8%	17%	23%	41%	8%

## Congress Approval

"Do you approve of the way the  
U.S. Congress is handling its job?"

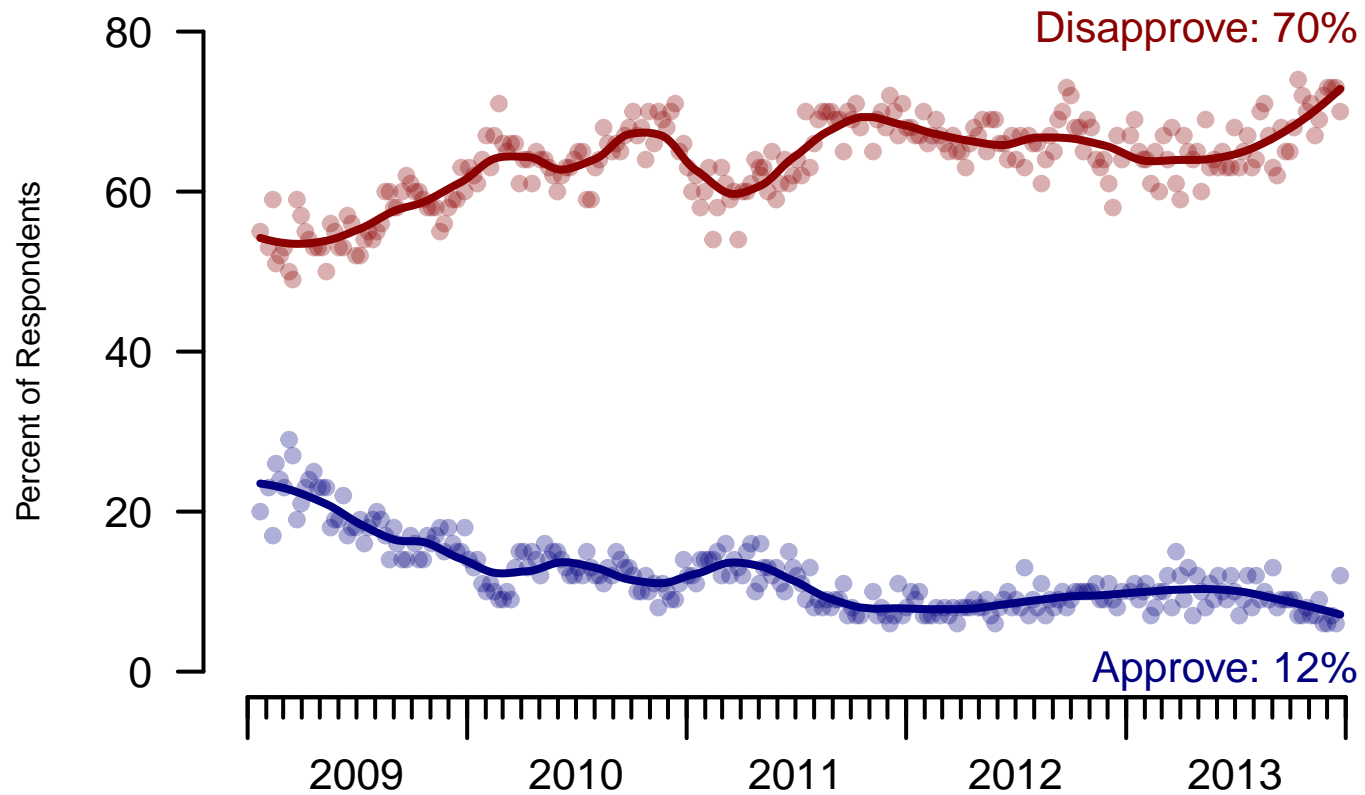


Figure 2: Congress Approval – All Adults

**4. Approval of U.S. Congress – This Week – All Adults**

Overall, do you approve or disapprove of the way that the United States Congress is handling its job?

	Total	Age				Race			Gender		Education		
		18-29	30-44	45-64	65+	White	Black	Hispanic	Male	Female	HS or less	Some college	College graduate
Strongly approve	3%	5%	3%	2%	1%	1%	10%	2%	3%	2%	1%	5%	2%
Somewhat approve	9%	16%	7%	5%	10%	8%	13%	9%	11%	7%	11%	8%	7%
Neither approve nor disapprove	14%	18%	16%	15%	3%	12%	23%	17%	12%	17%	21%	11%	9%
Somewhat disapprove	26%	26%	22%	28%	31%	30%	12%	22%	26%	27%	25%	29%	24%
Strongly disapprove	44%	29%	46%	48%	54%	46%	32%	48%	47%	41%	38%	44%	53%
Not sure	4%	7%	5%	2%	1%	3%	11%	2%	2%	6%	5%	3%	5%
Totals (Unweighted N)	100% (998)	100% (173)	100% (373)	100% (326)	100% (126)	100% (759)	100% (142)	100% (97)	100% (464)	100% (534)	100% (308)	100% (379)	100% (311)

	Total	Party ID			Ideology			Region				Family Income		
		Dem	Rep	Ind	Lib	Mod	Con	North-east	Mid-west	South	West	Under 40	40-100	100+
Strongly approve	3%	5%	1%	1%	3%	2%	3%	0%	2%	5%	1%	5%	1%	1%
Somewhat approve	9%	11%	9%	7%	10%	10%	8%	13%	5%	10%	9%	13%	7%	5%
Neither approve nor disapprove	14%	18%	12%	11%	12%	17%	13%	17%	11%	15%	15%	17%	9%	13%
Somewhat disapprove	26%	19%	41%	23%	19%	22%	34%	26%	31%	22%	27%	22%	26%	26%
Strongly disapprove	44%	41%	34%	56%	51%	45%	39%	40%	45%	45%	45%	37%	52%	53%
Not sure	4%	5%	2%	2%	4%	4%	3%	3%	7%	3%	3%	5%	4%	1%
Totals (Unweighted N)	100% (998)	100% (416)	100% (249)	100% (297)	100% (266)	100% (361)	100% (333)	100% (153)	100% (206)	100% (338)	100% (301)	100% (337)	100% (389)	100% (83)

**5. Direction of country – Historical**

Would you say things in this country today are...

	All Adults		
	Right Direction	Wrong Track	Not Sure
December 21-23, 2013	29%	61%	11%
December 14-16, 2013	25%	60%	15%
December 7-9, 2013	27%	60%	13%
November 30-December 2, 2013	24%	62%	13%
November 23-25, 2013	24%	66%	10%
November 16-18, 2013	22%	62%	16%
November 9-11, 2013	24%	62%	15%
November 2-4, 2013	21%	65%	14%
October 26-28, 2013	24%	61%	14%
October 19-21, 2013	22%	66%	13%
One Year Ago	32%	52%	16%



## Direction of Country

"Would you say things in this country today are generally headed in the right direction or off on the wrong track?"

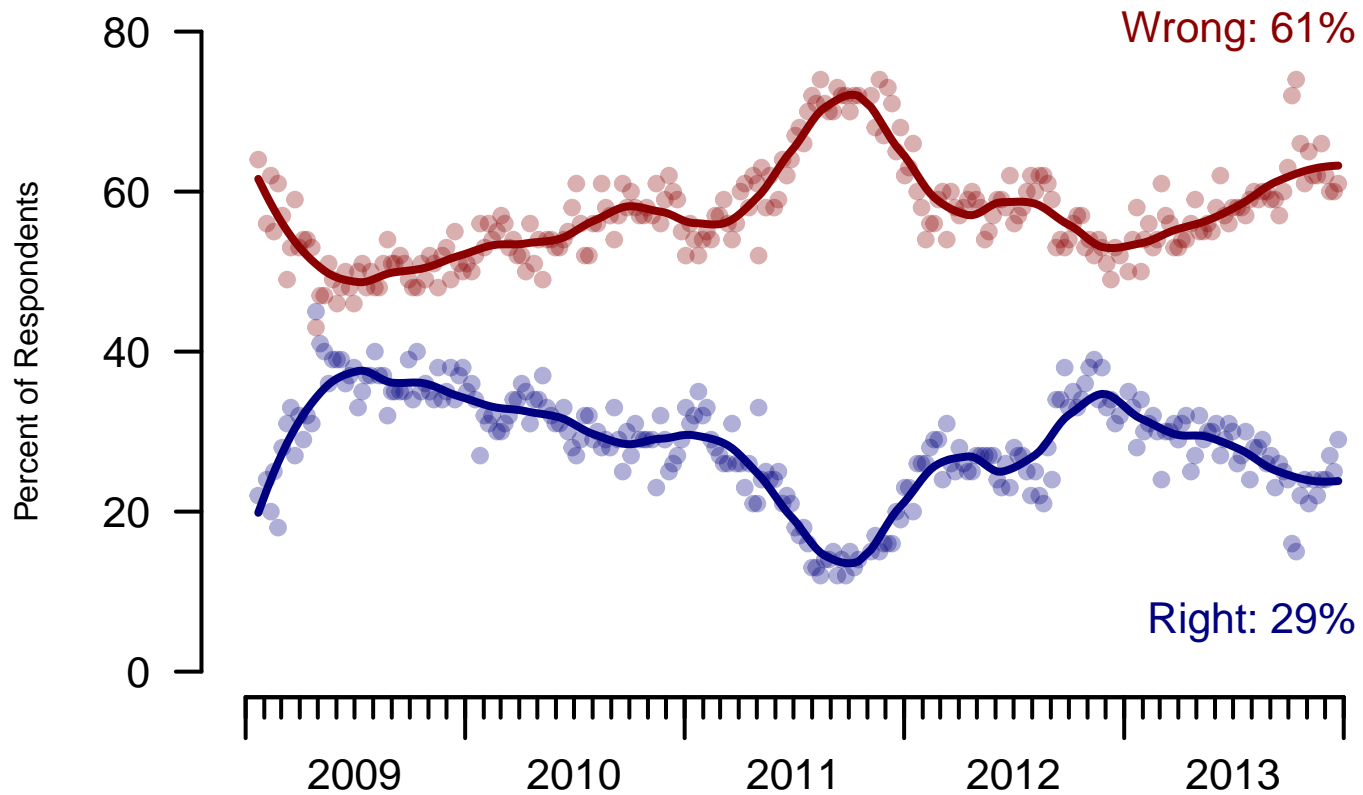


Figure 3: Direction of Country – All Adults

**6. Direction of Country – This Week – All Adults**

Would you say things in this country today are...

	Total	Age				Race			Gender		Education		
		18-29	30-44	45-64	65+	White	Black	Hispanic	Male	Female	HS or less	Some college	College graduate
Generally headed in the right direction	29%	33%	29%	27%	23%	23%	56%	30%	30%	27%	24%	30%	33%
Off on the wrong track	61%	50%	60%	65%	69%	68%	30%	53%	60%	61%	61%	62%	59%
Not sure	11%	17%	11%	8%	8%	9%	14%	17%	10%	12%	15%	8%	8%
Totals (Unweighted N)	100% (998)	100% (174)	100% (372)	100% (326)	100% (126)	100% (758)	100% (142)	100% (98)	100% (463)	100% (535)	100% (308)	100% (379)	100% (311)

	Total	Party ID			Ideology			Region				Family Income		
		Dem	Rep	Ind	Lib	Mod	Con	North-east	Mid-west	South	West	Under 40	40-100	100+
Generally headed in the right direction	29%	54%	6%	18%	53%	35%	9%	24%	24%	34%	29%	33%	27%	27%
Off on the wrong track	61%	30%	90%	71%	35%	51%	84%	62%	66%	59%	56%	53%	64%	66%
Not sure	11%	16%	3%	11%	12%	14%	6%	14%	10%	7%	15%	14%	9%	7%
Totals (Unweighted N)	100% (998)	100% (416)	100% (250)	100% (296)	100% (266)	100% (361)	100% (333)	100% (152)	100% (206)	100% (338)	100% (302)	100% (337)	100% (388)	100% (84)

**The Economist/YouGov Poll**  
December 21-23, 2013



<b>Sponsorship</b>	<i>The Economist</i>
<b>Fieldwork</b>	YouGov
<b>Interviewing Dates</b>	December 21-23, 2013
<b>Target population</b>	U.S. citizens, aged 18 and over.
<b>Sampling method</b>	Respondents were selected from YouGov's opt-in Internet panel using sample matching. A random sample (stratified by age, gender, race, education, and region) was selected from the 2010 American Community Study. Religion, political interest, minor party identification, and non-placement on an ideology scale, were imputed from the 2008 Pew Religion in American Life Survey.
<b>Weighting</b>	The sample was weighted using propensity scores based on age, gender, race, education, news interest, voter registration, and non-placement on an ideology scale. The weights range from 0.13 to 7.17, with a mean of one and a standard deviation of 1.
<b>Number of respondents</b>	1,000
<b>Margin of error</b>	± 4.3% (adjusted for weighting)
<b>Survey mode</b>	Web-based interviews
<b>Full results</b>	Available online at <a href="http://today.yougov.com/news/categories/economist/">http://today.yougov.com/news/categories/economist/</a> .