

Interviewing: January 31-February 2, 2015
Sample: 1000 Adults nationwide online
685 registered voters nationwide online



The Economist/YouGov Poll

Weekly Tracking

For immediate release

1. Approval of Obama as President – Historical

Do you approve or disapprove of the way Barack Obama is handling his job as President?

	All Adults						
	Total Approve	Total Disapprove	Strongly Approve	Somewhat Approve	Somewhat Disapprove	Strongly Disapprove	Not Sure
January 31-February 2, 2015	43%	51%	15%	28%	15%	36%	5%
January 24-26, 2015	45%	50%	18%	27%	15%	35%	5%
January 17-19, 2015	43%	52%	16%	27%	16%	36%	4%
January 10-12, 2015	45%	50%	18%	27%	14%	36%	5%
January 3-5, 2015	42%	53%	18%	24%	16%	37%	5%
December 27-29, 2014	46%	52%	17%	29%	13%	39%	3%
December 20-22, 2014	42%	54%	17%	25%	18%	36%	4%
December 13-15, 2014	45%	52%	14%	31%	13%	39%	3%
December 6-8, 2014	40%	53%	15%	25%	16%	37%	7%
November 29-December 1, 2014	44%	51%	15%	29%	12%	39%	4%
One Year Ago	42%	54%	13%	29%	17%	37%	4%

	Registered Voters						
	Total Approve	Total Disapprove	Strongly Approve	Somewhat Approve	Somewhat Disapprove	Strongly Disapprove	Not Sure
January 31-February 2, 2015	42%	55%	16%	26%	14%	41%	3%
January 24-26, 2015	44%	54%	21%	23%	13%	41%	3%
January 17-19, 2015	45%	53%	18%	27%	13%	40%	2%
January 10-12, 2015	44%	52%	19%	25%	11%	41%	4%
January 3-5, 2015	44%	54%	20%	24%	13%	41%	3%
December 27-29, 2014	45%	53%	18%	27%	11%	42%	2%
December 20-22, 2014	41%	56%	18%	23%	15%	41%	2%
December 13-15, 2014	44%	54%	15%	29%	12%	42%	3%
December 6-8, 2014	42%	55%	20%	22%	13%	42%	2%
November 29-December 1, 2014	43%	55%	15%	28%	9%	46%	2%
One Year Ago	44%	53%	16%	28%	14%	39%	2%

Obama Approval

"Do you approve or disapprove of the way Barack Obama is handling his job as President?"

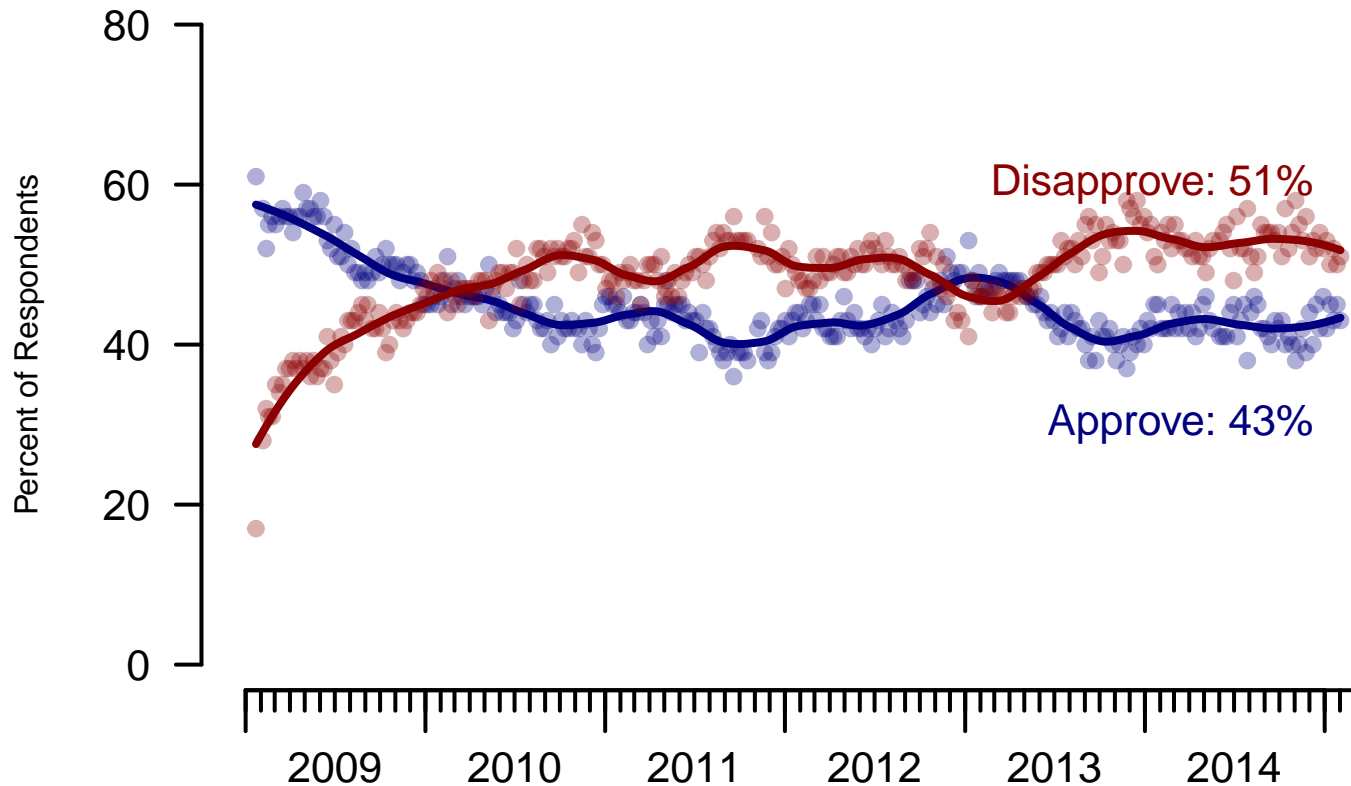


Figure 1: Obama Approval – All Adults

Obama Approval

"Do you approve or disapprove of the way Barack Obama is handling his job as President?"

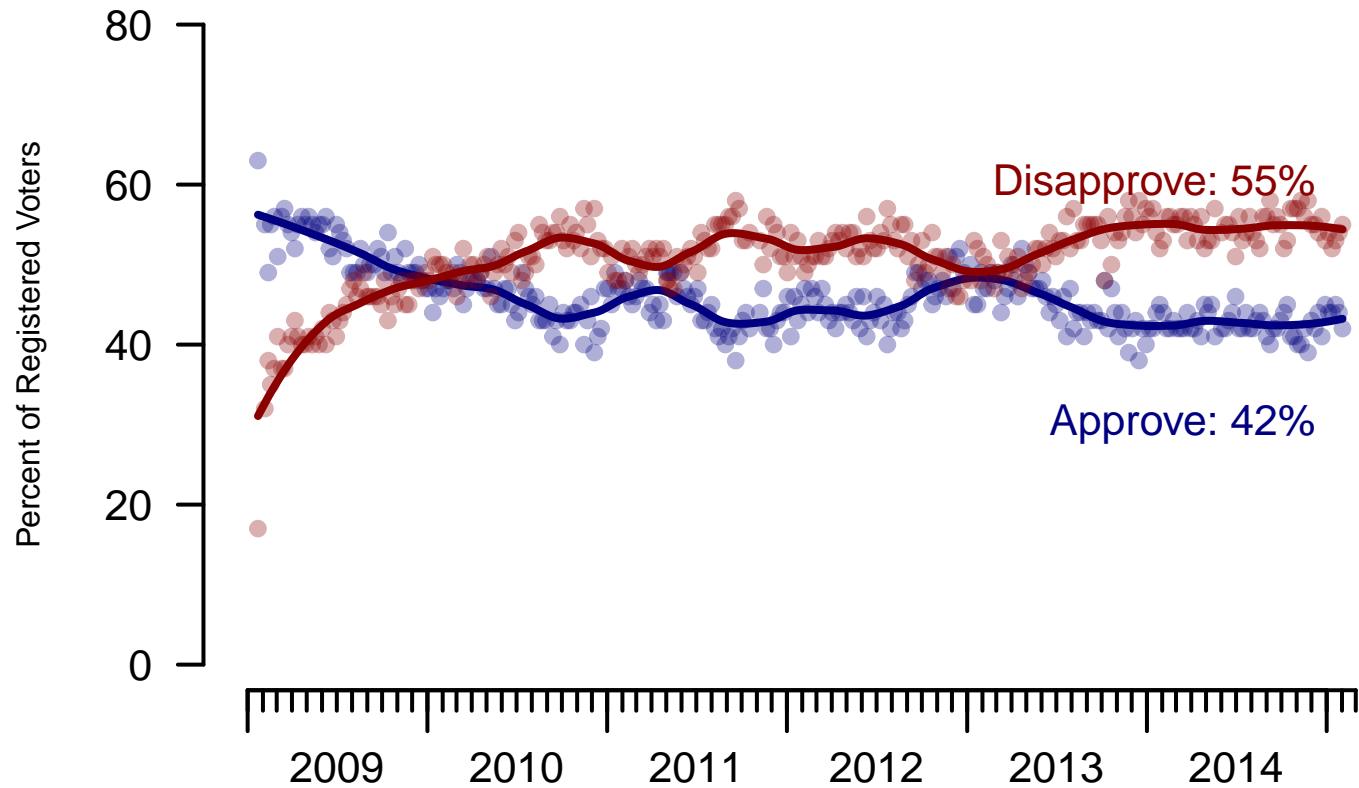


Figure 2: Obama Approval – Registered Voters

2. Approval of Obama as President – This Week – All Adults

Do you approve or disapprove of the way Barack Obama is handling his job as President?

	Age					Race				Region			
	Total	18-29	30-44	45-64	65+	White	Black	Hispanic	Other	North-east	Mid-west	South	West
Strongly approve	15%	12%	14%	18%	17%	12%	32%	20%	10%	17%	16%	15%	14%
Somewhat approve	28%	37%	31%	22%	21%	25%	35%	35%	35%	27%	33%	28%	24%
Somewhat disapprove	15%	19%	18%	12%	11%	16%	16%	10%	18%	20%	12%	15%	16%
Strongly disapprove	36%	24%	32%	44%	50%	44%	12%	27%	32%	30%	34%	39%	41%
Not sure	5%	9%	4%	4%	1%	4%	6%	8%	4%	6%	5%	4%	5%
Totals (Unweighted N)	100% (1,000)	100% (203)	100% (310)	100% (355)	100% (132)	100% (675)	100% (138)	100% (116)	100% (71)	100% (210)	100% (227)	100% (346)	100% (217)

	Party ID			Ideology			Gender		Family Income			
	Total	Dem	Ind	Rep	Lib	Mod	Con	Male	Female	Under 40	40-100	100+
Strongly approve	15%	34%	10%	1%	33%	16%	3%	13%	17%	17%	14%	12%
Somewhat approve	28%	46%	27%	7%	49%	33%	11%	25%	31%	27%	29%	39%
Somewhat disapprove	15%	10%	17%	15%	10%	18%	16%	15%	15%	18%	15%	4%
Strongly disapprove	36%	6%	40%	77%	5%	26%	68%	40%	33%	30%	40%	42%
Not sure	5%	5%	6%	0%	4%	7%	2%	6%	4%	8%	2%	3%
Totals (Unweighted N)	100% (1,000)	100% (357)	100% (316)	100% (242)	100% (252)	100% (353)	100% (336)	100% (464)	100% (536)	100% (382)	100% (372)	100% (122)

3. Approval of U.S. Congress – Historical

Overall, do you approve or disapprove of the way that the United States Congress is handling its job?

	All Adults							
	Total Approve	Total Disapprove	Strongly Approve	Somewhat Approve	Neutral	Somewhat Disapprove	Strongly Disapprove	Not Sure
January 31-February 2, 2015	12%	59%	2%	10%	19%	21%	38%	10%
January 24-26, 2015	18%	56%	4%	14%	17%	23%	33%	9%
January 17-19, 2015	14%	58%	4%	10%	20%	22%	36%	8%
January 10-12, 2015	16%	61%	3%	13%	16%	23%	38%	7%
January 3-5, 2015	9%	64%	3%	6%	19%	26%	38%	8%
December 27-29, 2014	10%	64%	2%	8%	19%	21%	43%	7%
December 20-22, 2014	9%	63%	2%	7%	19%	21%	42%	8%
December 13-15, 2014	11%	65%	2%	9%	15%	22%	43%	9%
December 6-8, 2014	8%	63%	2%	6%	20%	23%	40%	9%
November 29-December 1, 2014	11%	65%	2%	9%	14%	22%	43%	10%
One Year Ago	11%	69%	3%	8%	14%	24%	45%	6%

	Registered Voters							
	Total Approve	Total Disapprove	Strongly Approve	Somewhat Approve	Neutral	Somewhat Disapprove	Strongly Disapprove	Not Sure
January 31-February 2, 2015	12%	62%	2%	10%	21%	22%	40%	5%
January 24-26, 2015	19%	57%	4%	15%	16%	22%	35%	7%
January 17-19, 2015	13%	61%	4%	9%	20%	22%	39%	6%
January 10-12, 2015	14%	66%	3%	11%	16%	24%	42%	5%
January 3-5, 2015	8%	72%	2%	6%	16%	25%	47%	5%
December 27-29, 2014	9%	71%	2%	7%	15%	24%	47%	5%
December 20-22, 2014	8%	71%	2%	6%	15%	23%	48%	5%
December 13-15, 2014	11%	72%	3%	8%	11%	23%	49%	6%
December 6-8, 2014	9%	71%	2%	7%	15%	23%	48%	5%
November 29-December 1, 2014	12%	69%	3%	9%	13%	24%	45%	6%
One Year Ago	9%	75%	3%	6%	12%	25%	50%	3%

Congress Approval

"Do you approve of the way the
U.S. Congress is handling its job?"

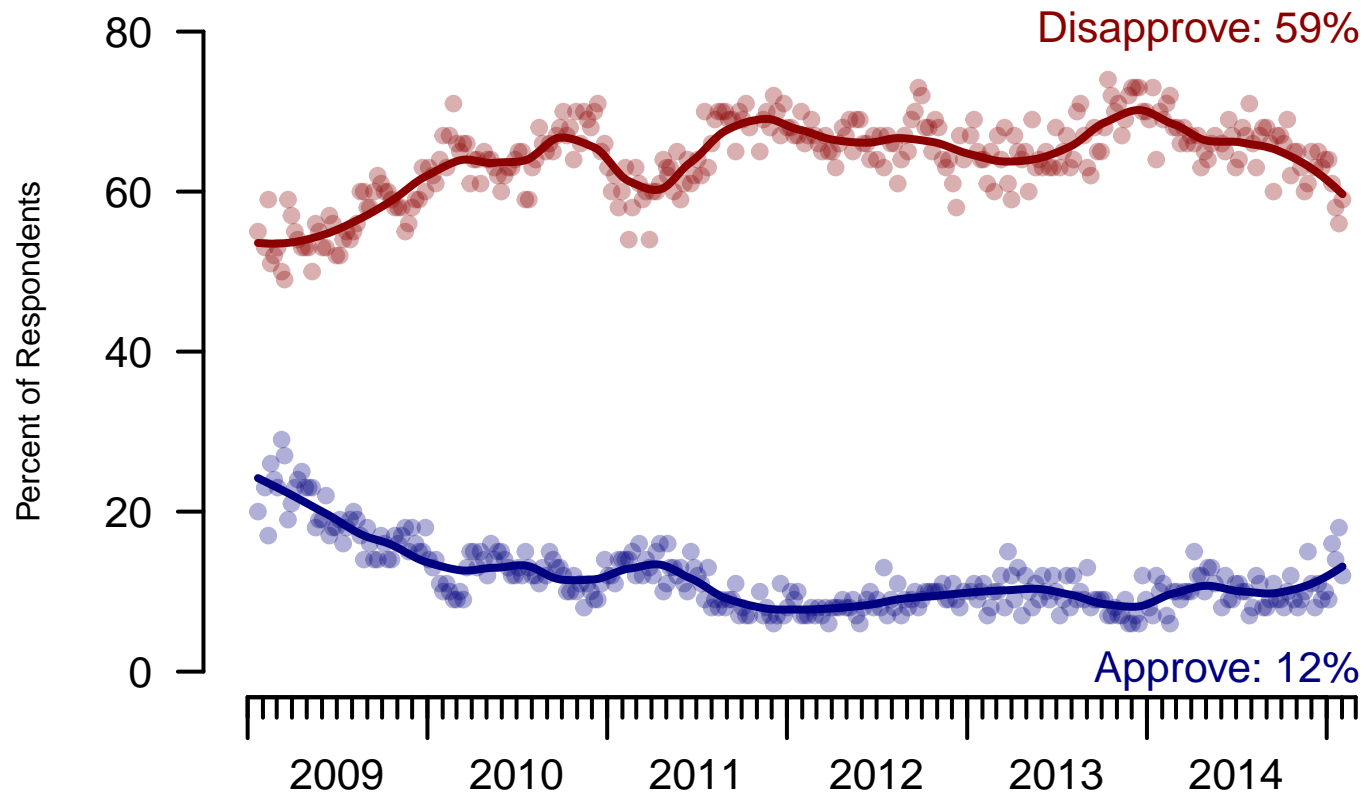


Figure 3: Congress Approval – All Adults

Congress Approval

"Do you approve of the way the
U.S. Congress is handling its job?"

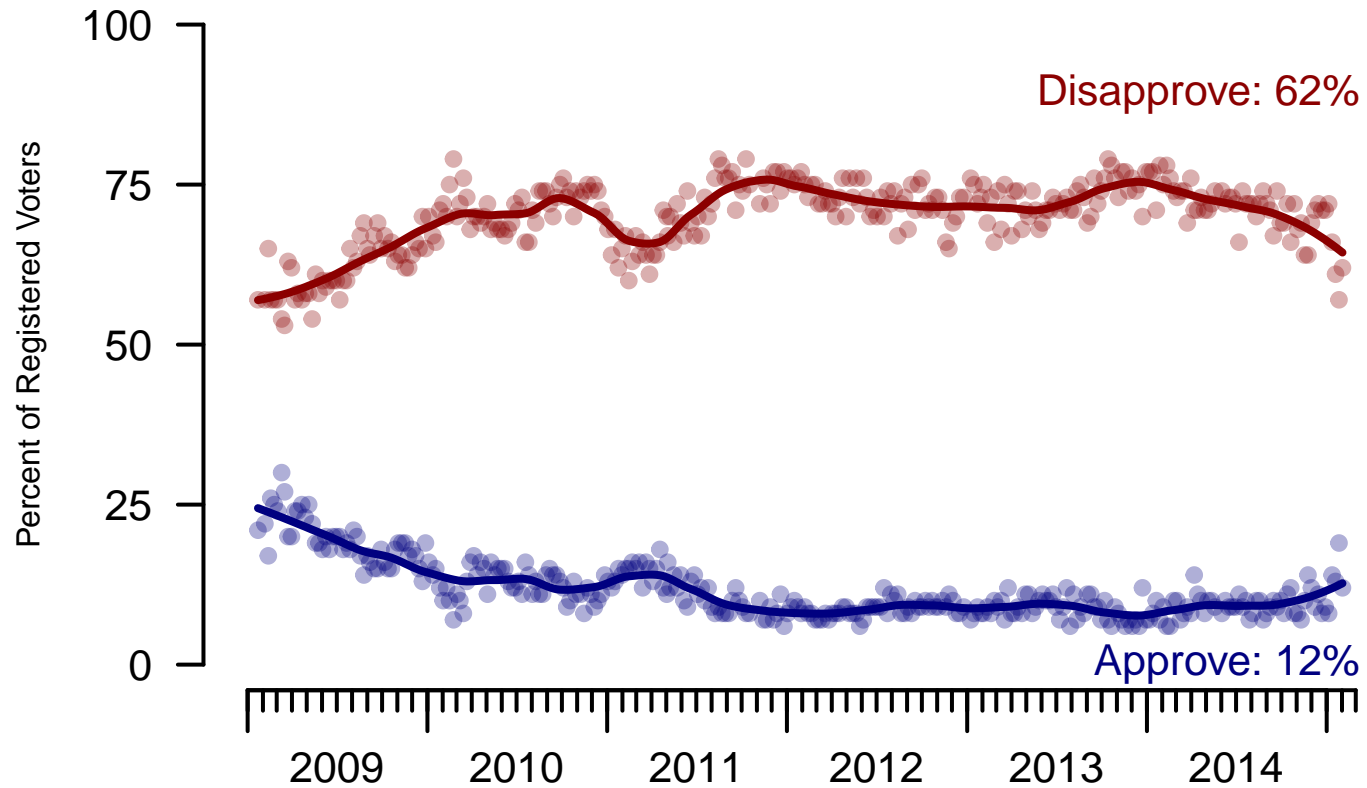


Figure 4: Congress Approval – Registered Voters

4. Approval of U.S. Congress – This Week – All Adults

Overall, do you approve or disapprove of the way that the United States Congress is handling its job?

	Age					Race				Region			
	Total	18-29	30-44	45-64	65+	White	Black	Hispanic	Other	North-east	Mid-west	South	West
Strongly approve	2%	2%	2%	2%	1%	1%	2%	4%	–	2%	2%	2%	1%
Somewhat approve	10%	10%	11%	10%	10%	10%	9%	13%	9%	8%	13%	10%	9%
Neither approve nor disapprove	19%	23%	15%	21%	13%	14%	22%	33%	25%	19%	17%	19%	20%
Somewhat disapprove	21%	16%	23%	22%	24%	24%	16%	13%	21%	18%	23%	22%	19%
Strongly disapprove	38%	32%	37%	40%	47%	41%	39%	21%	37%	40%	37%	36%	41%
Not sure	10%	17%	13%	6%	6%	9%	12%	16%	8%	14%	7%	11%	10%
Totals (Unweighted N)	100% (997)	100% (201)	100% (309)	100% (355)	100% (132)	100% (675)	100% (137)	100% (115)	100% (70)	100% (208)	100% (227)	100% (345)	100% (217)

	Party ID			Ideology			Gender		Family Income			
	Total	Dem	Ind	Rep	Lib	Mod	Con	Male	Female	Under 40	40-100	100+
Strongly approve	2%	1%	2%	2%	2%	2%	1%	1%	2%	3%	0%	3%
Somewhat approve	10%	8%	10%	14%	8%	7%	15%	10%	10%	8%	13%	8%
Neither approve nor disapprove	19%	14%	17%	26%	13%	23%	18%	18%	20%	20%	19%	14%
Somewhat disapprove	21%	14%	20%	32%	14%	19%	29%	19%	23%	22%	21%	15%
Strongly disapprove	38%	50%	43%	22%	48%	41%	29%	45%	32%	31%	39%	57%
Not sure	10%	13%	8%	5%	14%	8%	8%	8%	13%	16%	7%	3%
Totals (Unweighted N)	100% (997)	100% (357)	100% (314)	100% (241)	100% (252)	100% (352)	100% (335)	100% (463)	100% (534)	100% (380)	100% (371)	100% (122)

5. Direction of country – Historical

Would you say things in this country today are...

	All Adults		
	Right Direction	Wrong Track	Not Sure
January 31-February 2, 2015	27%	58%	16%
January 24-26, 2015	33%	55%	12%
January 17-19, 2015	28%	57%	15%
January 10-12, 2015	29%	58%	13%
January 3-5, 2015	32%	55%	13%
December 27-29, 2014	29%	54%	16%
December 20-22, 2014	28%	59%	13%
December 13-15, 2014	24%	65%	12%
December 6-8, 2014	22%	65%	13%
November 29-December 1, 2014	23%	65%	12%
One Year Ago	27%	61%	12%

	Registered Voters		
	Right Direction	Wrong Track	Not Sure
January 31-February 2, 2015	29%	59%	12%
January 24-26, 2015	32%	60%	8%
January 17-19, 2015	29%	59%	12%
January 10-12, 2015	29%	61%	10%
January 3-5, 2015	32%	57%	12%
December 27-29, 2014	30%	56%	14%
December 20-22, 2014	27%	64%	9%
December 13-15, 2014	22%	68%	10%
December 6-8, 2014	26%	63%	11%
November 29-December 1, 2014	23%	67%	10%
One Year Ago	27%	61%	11%

Direction of Country

"Would you say things in this country today are generally headed in the right direction or off on the wrong track?"

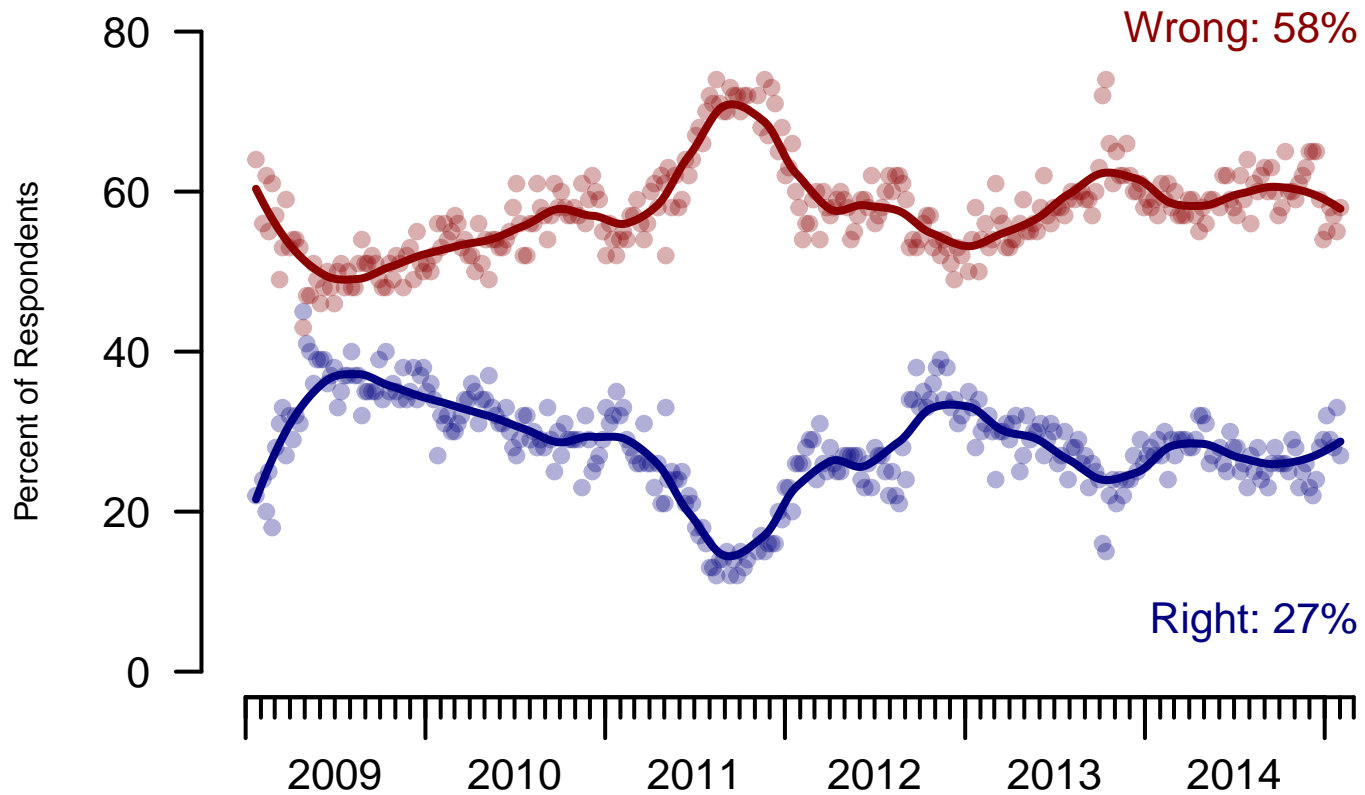


Figure 5: Direction of Country – All Adults

Direction of Country

"Would you say things in this country today are generally headed in the right direction or off on the wrong track?"

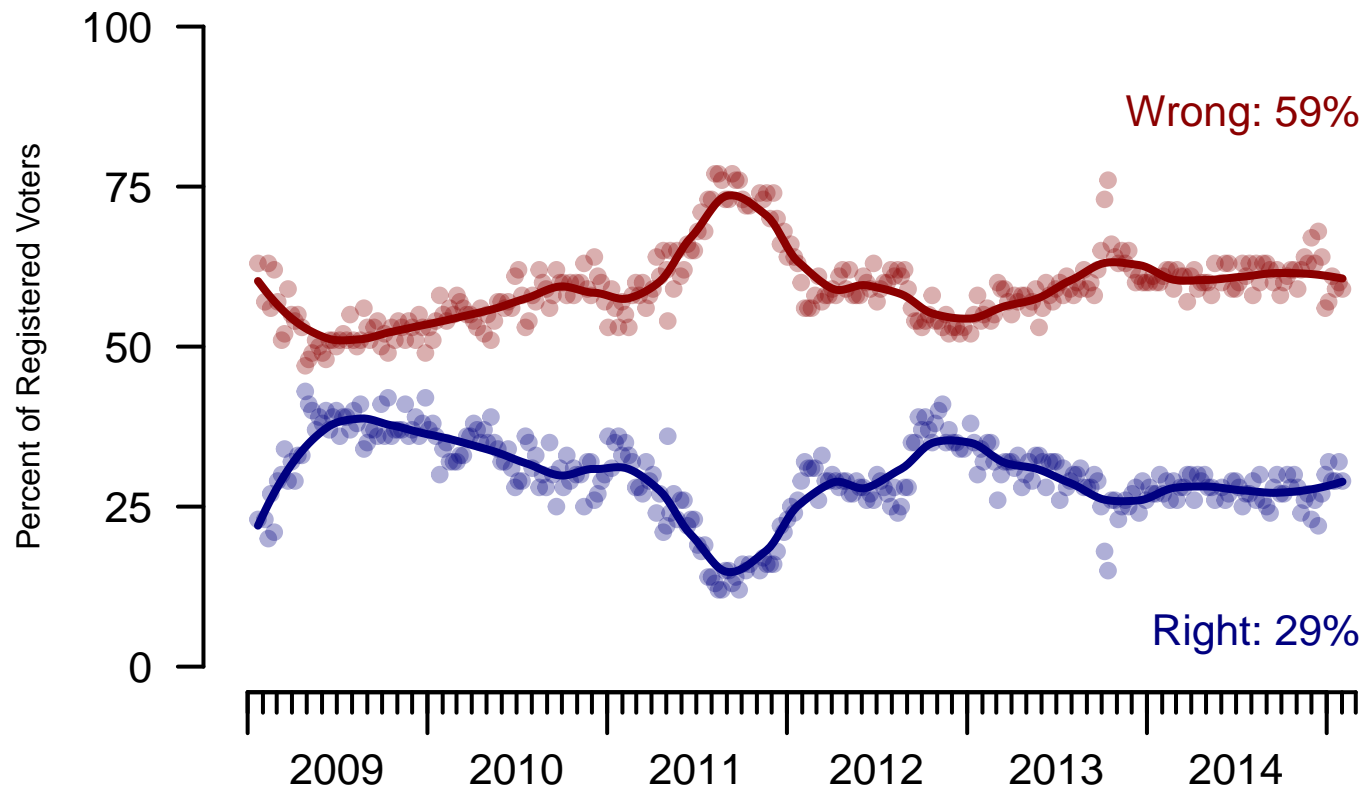


Figure 6: Direction of Country – Registered Voters

6. Direction of Country – This Week – All Adults

Would you say things in this country today are...

	Age					Race				Region			
	Total	18-29	30-44	45-64	65+	White	Black	Hispanic	Other	North-east	Mid-west	South	West
Generally headed in the right direction	27%	29%	26%	26%	26%	23%	36%	35%	28%	29%	30%	25%	24%
Off on the wrong track	58%	48%	59%	61%	66%	64%	42%	49%	50%	60%	60%	56%	56%
Not sure	16%	23%	15%	13%	8%	13%	22%	17%	21%	11%	10%	19%	20%
Totals (Unweighted N)	100% (997)	100% (201)	100% (309)	100% (355)	100% (132)	100% (673)	100% (137)	100% (116)	100% (71)	100% (209)	100% (226)	100% (345)	100% (217)

	Party ID				Ideology			Gender		Family Income		
	Total	Dem	Ind	Rep	Lib	Mod	Con	Male	Female	Under 40	40-100	100+
Generally headed in the right direction	27%	48%	23%	8%	48%	29%	10%	23%	30%	24%	31%	26%
Off on the wrong track	58%	33%	65%	80%	35%	52%	80%	60%	56%	57%	57%	67%
Not sure	16%	19%	12%	13%	17%	19%	10%	17%	14%	19%	12%	7%
Totals (Unweighted N)	100% (997)	100% (357)	100% (316)	100% (240)	100% (252)	100% (352)	100% (335)	100% (463)	100% (534)	100% (381)	100% (371)	100% (121)

The Economist/YouGov Poll
January 31-February 2, 2015



Sponsorship	<i>The Economist</i>
Fieldwork	YouGov
Interviewing Dates	January 31-February 2, 2015
Target population	U.S. citizens, aged 18 and over.
Sampling method	Respondents were selected from YouGov's opt-in Internet panel using sample matching. A random sample (stratified by age, gender, race, education, and region) was selected from the 2010 American Community Study. Voter registration was imputed from the November 2010 Current Population Survey Registration and Voting Supplement. Religion, political interest, minor party identification, and non-placement on an ideology scale, were imputed from the 2008 Pew Religion in American Life Survey.
Weighting	The sample was weighted using propensity scores based on age, gender, race, education, news interest, voter registration, and non-placement on an ideology scale. The weights range from 0.13 to 4.08, with a mean of one and a standard deviation of 0.9.
Number of respondents	1,000
Margin of error	± 4.1% (adjusted for weighting)
Margin of error (Registered Voters)	± 4.5% (adjusted for weighting)
Survey mode	Web-based interviews
Full results	Available online at http://today.yougov.com/news/categories/economist/ .